

Waikato District Council

Cemetery Strategy 2015 – 2045



Document Status - adopted by Council 13 July 2015

Contents

1. Introduction	3
1.1 Purpose.....	3
1.2 Structure of Strategy	3
1.3 Regulatory Framework	3
2. Cemeteries in the Waikato District	5
3. Challenges for cemetery management in the District.....	7
4. Objectives, policies and actions for management of cemeteries	10
5. Cemetery management.....	13
5.1 Key Stakeholders.....	13
5.2 Plot Purchases	13
5.3 Burials.....	14
5.4 Ash Interments.....	15
5.5 Monuments	15
5.6 Cemetery Record Searches	15
5.7 Miscellaneous.....	16
5.8 Operating Procedures Flowcharts	17
Procedure for Authority for interment	17
Procedure for Monument Permits	18
Appendix 1 – Waikato District Council Cemeteries	19
Appendix 2 - Waikato District Cemetery Projections.....	42
Appendix 3 – Application forms and Information brochures	38

I. Introduction

Cemeteries play an important role in our society. Cemeteries support our sense of community and reflect the history of local people and cultures that founded and influenced the District. Cemeteries provide a place where family and friends can care for and mourn the loss of loved ones consistent with their culture and beliefs and reflect on the life shared with them.

The Waikato District Council manages 22 cemeteries. Of these, the Alexandra Redoubt Cemetery, Pokeno Old Soldiers Cemetery and Rangiriri Old Cemetery are at capacity with no further development planned. There are also numerous privately owned cemeteries and urupa in the District.

I.1 Purpose

The purpose of the Waikato District Cemetery Strategy is to provide an overview of the provision and management of cemeteries managed by Waikato District Council, and to set the future direction for the provision and management of these cemeteries in a co-ordinated and transparent manner.

I.2 Structure of Strategy

Chapter 1 explains the purpose of this strategy and the regulatory framework for management of cemeteries.

Chapter 2 describes cemeteries in our district.

Chapter 3 explains the challenges facing future management of cemeteries in the District.

Chapter 4 sets out objectives, policies and actions that Waikato District Council aims to achieve in the provision and management of cemeteries.

Chapter 5 sets out information on the operational management of cemeteries in the District.

I.3 Regulatory Framework

There are a number of different Acts and regulations that provide the legal framework for the provision, use and management of cemeteries. A summary of the key Acts and regulations are outlined below.

The **Burial and Cremation Act 1964** is the primary legislation for the management of burial and cremation in New Zealand. Its primary purpose is to ensure that every community has access to places for burial and cremation. Cemeteries are an essential public service and local authorities have a legal responsibility under the Act to provide them. The Act authorises local authorities to undertake work for the purpose of carrying out this duty - namely acquisition of land and establishing, maintaining and improving cemeteries. The Act requires that *“every cemetery shall be open for the interment of all deceased persons, to be buried with any religious or other ceremony, or without any ceremony, as the friends of the deceased think proper”*. Some local authorities also provide cremation services but they are not legally obliged to do so. Waikato District Council does not provide this facility.

This Act was under review at the time of writing this Cemetery Strategy and may change many aspects about how burials or cremations are managed. Any changes and major implications will be added to the strategy by a review in future.

The **Reserves Act 1977** provides for the provision and management of areas of New Zealand with some special feature or value for the benefit and enjoyment of the public. Land under this Act is classified as one of seven reserve categories. Many cemeteries within the District are classified as local purpose reserve (cemetery). Classification under this Act requires the reserve to be managed in accordance with the requirements of the Reserves Act. In the case of local purpose reserves they can be used for a broad range of activities unless their purpose has been narrowed, which in this case is for cemetery purposes.

The **Health Act 1956** sets out obligations for local authorities to improve, promote, and protect public health within its district and for that purpose is empowered to appoint environmental health officers to assess and manage nuisance and create and enforce bylaws to protect public health. Cemeteries are specifically included as a sanitary work in the Act and local authorities may be required by the Minister to provide, alter or extend sanitary works under this Act.

The **Local Government Act 2002** governs how local government conducts its business including cemetery management. Some of the ways that this Act influences cemetery management include the requirement to undertake cemetery assessments, and the requirement to use prudent asset management practices for cemetery acquisition, improvement, maintenance and replacement.

The **Resource Management Act 1991** requires local authorities to sustainably manage the natural and physical resources in their district. At a District Council level, district plans provide the framework for the management of land uses. Activities on cemeteries, including the creation of new cemeteries, must comply with the requirements of this Act and the Waikato and Franklin District Plans.

Two bylaws of particular relevance to this strategy are the **Waikato District Council Cemetery and Crematoria Bylaw 2008** and the **Franklin Cemeteries Bylaw 2008**, which is now partly administered by the Waikato District Council. These bylaws will in time be merged and redrafted, but in the meantime each applies within its respective jurisdiction. These bylaws control and set standards for the operation of cemeteries within Council's control, and cover matters such as burial and sale of plots, fees, hours of operation, monuments and memorials, floral and other attributes, and conduct and activities in cemeteries.

There are also three other regulations that cover cremations and burials:

- Burial and Cremation (Removal of Monuments and Tablets) Regulations 1967
- Cremation Regulations 1973
- Health (Burial) Regulations 1946

2. Cemeteries in the Waikato District

Waikato District Council is responsible for 22 cemeteries in the District, three of which are at capacity and not taking further burials. The location of these cemeteries is illustrated in Figure I below. Detail about each of these cemeteries can be found in Appendix I.

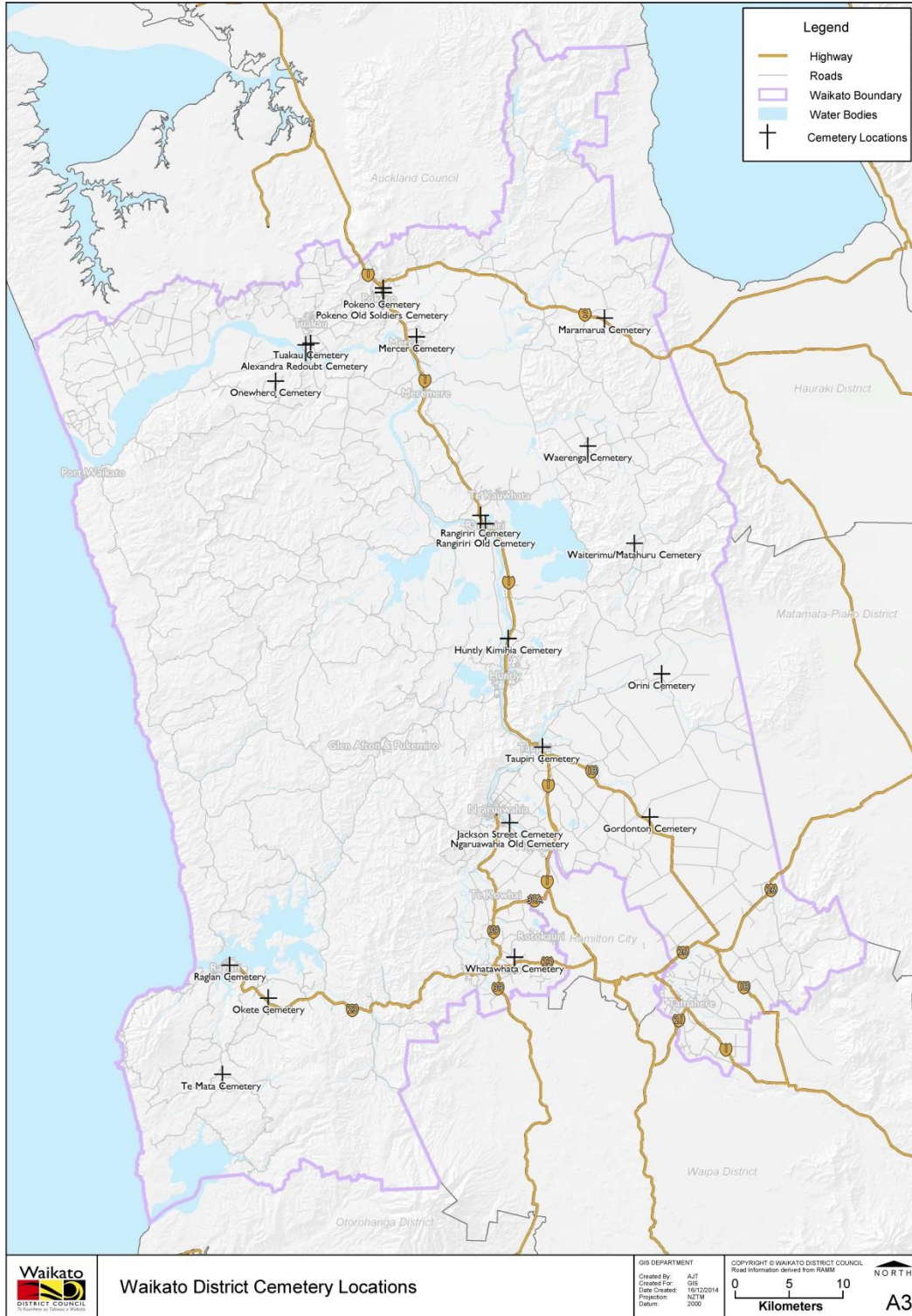


Figure I – Waikato District Cemetery Locations

There are two types of cemeteries in the District:

1. Lawn Cemeteries - This style involves a concrete strip with plaques affixed horizontally onto the concrete strip. The area between the strips is in grass. Figure 2 shows an image of this type of cemetery.



Figure 2 – Huntly Kimihia Cemetery is a Lawn Cemetery

2. Monumental cemeteries - These are the older style containing a concrete surround and cover on the grave site. The headstones vary in size, form and style.

All cemeteries provide for burials and interment of ashes. Five cemeteries set aside an area specifically for RSA burials. One cemetery caters for Muslim burials, and another for Baha'i burials. A detailed description of each cemetery is included in Appendix I.

A number of urupa and private cemeteries also exist within the Waikato district. The Waikato District Council is not involved in the function of these and they are not covered by this Strategy. If Council receives a request for a burial on an urupa they are directed to the Maaori Land Court for land to be set aside for burial purposes and if there is a request for a private burial the customer is required to go to the Ministry of Health to obtain approval to set aside land for burial purposes.

3. Challenges for cemetery management in the District

The Waikato District is growing and changing. It is important that the provision and management of cemeteries in the district meets the demands and needs of the community into the future. Some identified challenges to manage over the period of this strategy are discussed below.

Meeting burial demands

Across the District there are 11,700 burial plots with capacity for about 4,200 more plots in existing cemeteries, and for another 18,000 to 26,000 burial plots on 'additional' land earmarked for cemetery use. Some existing cemeteries have limited capacity, whilst other cemeteries have plenty of space available.

Over the next 30 years the number of deaths and associated demand for burial plots are projected to increase. A 2014 report commissioned by the Council (refer to Appendix 2) provides supply and demand projections between 2015 and 2045 for the Waikato District. Overall it shows that despite some cemeteries being projected to reach capacity by 2045, all parts of the district are forecast to have surplus capacity in nearby cemeteries.

The report identifies in more detail which cemeteries are projected to reach capacity in which year. The key findings of the projection analysis show that the following cemeteries will reach their total capacity within two years:

- Tuakau Cemetery

The following cemeteries will require more land to be developed in the next five years:

- Rangiriri Cemetery – by 2017
- Whatawhata Cemetery – by 2017

The following cemeteries will require additional land to be developed in five to ten years' time:

- Matahura / Waiterimu Cemetery – by 2020. It is noted that this cemetery only has residual capacity of nine burials. Although historic demand has been low there is potential for this capacity to be used up before 2020.
- Huntly Kimihia Cemetery – by 2023. Additional land will be developed in 2015 and this cemetery is then projected to reach total capacity around 2035.
- Waerenga Cemetery – by 2024.

The following cemeteries are projected to require additional land to be developed between 2025 and 2045:

- Gordonton Cemetery – by 2027.
- Maramarua Cemetery – 2035.
- Okete Cemetery – by 2035.
- Jackson Street Cemetery – by 2040.
- Orini Cemetery – by 2045.

The Mercer, Muslim, Onewhero, Raglan and Taupiri cemeteries are all projected to have sufficient capacity for the next 30 years.

At the end of the 30 year study period there will still be around 20,000 burial plots available across the region within actively maintained cemetery land and additional Council land earmarked for cemetery purposes. The northern part of the district is the most constrained with both Tuakau and Pokeno cemeteries forecast to reach capacity within 30 years. This constraint is offset by capacity in cemeteries within Maramarua, Mercer and Waerenga, however it does mean that some communities will need to travel to nearby towns for access to cemeteries when their local cemetery reaches capacity.

An additional issue that may arise in the north of the district is the impact that significant residential growth in and around Tuakau and Pokeno and within Auckland will have on the capacity of cemeteries. Understanding how this growth compares to that anticipated by the report in Appendix 2 will be essential for future planning of cemeteries in this area.

Ensuring we also have sufficient capacity in the form of additional cemetery land at each site in case of natural disaster is also an additional consideration in meeting burial demands.

It is noted that demand for cremation interment will also increase, but as interment requires a very small amount of land they do not drive demand assessments to the same extent.

Changing needs of communities

Council does its best to accommodate cultural and religious needs of the deceased and their families. The Waikato District Council has the only Baha'i cemetery in New Zealand located in Tuakau and has a Muslim Cemetery in Ngaruawahia. There are four areas set aside specifically for children's burials and five cemeteries have an area set aside specifically for RSA burials. A table summarising the types of burial in the District's cemeteries is included at the end of Appendix I.

Over time it is likely that the needs of the community will change and the challenge for the Council is to recognise these changes and respond in a timely manner. Conversely Council must make careful use of limited resources and avoid setting aside land for a sole cultural or religious group if there is not sufficient demand.

In the Waikato District there are no crematoria and the District relies upon those in Hamilton City and in Manukau. In the future demand may arise for a crematorium. The Council does not intend to develop crematoria how and therefore these would need to be privately developed if demand arises.

Looking after what we've got

Cemeteries play an important role in our society, they support our sense of community, reflect the history of local people and cultures that founded and influenced the District, and provide a place where family and friends can remember and mourn the loss of loved ones consistent with their culture and beliefs. It is important that we maintain cemeteries, and provide facilities and information, that recognises the role cemeteries play in our communities and enables family and friends to care for and mourn the loss of loved ones.

Legislation changes

The Burial and Cremation Act 1964 is under review. The Law Commission is undertaking a first principles review of the Act, considering the roles central and local government and the private sector should play in providing and managing cemeteries and crematoria. It may change some of the ways in which cemeteries are managed, which could have a flow on effect for this strategy. Any law reform is expected to occur in 2015/16.

Other trends and issues may arise over time. Council will need to be flexible to allow for these as required.

4. Objectives, policies and actions for management of cemeteries

These objectives, policies and actions guide decisions about the development, management and operation of cemeteries in the Waikato District.

Objective I																	
Provide cemeteries that meet growth demands and religious and cultural requirements.																	
Policies																	
1.1	Plan for the expansion or closure of existing cemeteries and the provision of new cemeteries based on burial rate projections.																
1.2	Provide interment areas that meet the changing religious or cultural requirements of the growing population of the District.																
Actions																	
A1	Implement the staged expansion of cemeteries in accordance with the timeframes below, and subject to updated projection information:																
	<table border="1"> <thead> <tr> <th>Action</th> <th>Timeframe</th> </tr> </thead> <tbody> <tr> <td>Develop land at Tuakau cemetery.</td> <td>2015</td> </tr> <tr> <td>Develop additional land at Rangiriri cemetery.</td> <td>2014</td> </tr> <tr> <td>Close Ngaruawahia Old cemetery when capacity is reached.</td> <td>2016</td> </tr> <tr> <td>Develop additional land at Whatawhata cemetery.</td> <td>2017</td> </tr> <tr> <td>Develop additional land at Matahura/Waiterimu cemetery.</td> <td>2020</td> </tr> <tr> <td>Develop additional land at Huntly Kimihia cemetery.</td> <td>2023</td> </tr> <tr> <td>Develop additional land at Waerenga cemetery.</td> <td>2024</td> </tr> </tbody> </table>	Action	Timeframe	Develop land at Tuakau cemetery.	2015	Develop additional land at Rangiriri cemetery.	2014	Close Ngaruawahia Old cemetery when capacity is reached.	2016	Develop additional land at Whatawhata cemetery.	2017	Develop additional land at Matahura/Waiterimu cemetery.	2020	Develop additional land at Huntly Kimihia cemetery.	2023	Develop additional land at Waerenga cemetery.	2024
Action	Timeframe																
Develop land at Tuakau cemetery.	2015																
Develop additional land at Rangiriri cemetery.	2014																
Close Ngaruawahia Old cemetery when capacity is reached.	2016																
Develop additional land at Whatawhata cemetery.	2017																
Develop additional land at Matahura/Waiterimu cemetery.	2020																
Develop additional land at Huntly Kimihia cemetery.	2023																
Develop additional land at Waerenga cemetery.	2024																
A2	Review cemetery strategy on a 5 yearly basis including reviewing cemetery projections and community needs.																
A3	Purchase cemetery land within the next year to meet the needs of the Tuakau and Pokeno communities.																
A4	Provide a range of interment and memorialisation options.																
A5	Review requests and annually check changing trends in community needs and determine whether changes are required to existing management of cemeteries.																
A6	Review fees and charges for cemeteries at least every 3 years to align with long term planning.																
A7	Formally tidy up the legal and management status of cemeteries that are administered by the Waikato District Council.																
A8	Formally close the Alexandra Redoubt Cemetery, Pokeno Old Soldiers Cemetery and Rangiriri Old Cemetery under the Burial and Cremation Act 1964.																

Explanation: This objective, policy and actions respond to the challenges of meeting growth demands and the changing needs of communities. The Waikato District is growing and changing. Understanding capacity constraints at existing cemeteries enables the Council to proactively redevelop or purchase new cemetery land. It also enables the Council to proactively respond to cultural and religious expectations and needs.

Objective 2	
Ensure cemeteries are well-designed, safe and maintained to Council service levels.	
Policies	
2.1	Manage cemeteries in the Waikato District in accordance with the requirements of relevant legislation, particularly the Burial and Cremation Act 1964 and Reserves Act 1977.
2.2	Ensure all proposed facilities meet best practice accessible and safe design standards.
2.3	Maintain cemeteries to the Council service levels expected by the community.
2.4	Create reflective cemetery environments when developing new areas for burial.
Actions	
A9	Undertake ongoing improvements to cemetery facilities such as signs, seats and fences.
A10	Maintain operating procedures to guide the day to day management of cemeteries.
A11	Audit contractor performance on cemeteries regularly to ensure quality maintenance.

Explanation: This objective, policies and actions address the challenge to look after what we've got. This is important for the day to day operations of Council cemeteries.

Objective 3	
Improve public understanding of cemetery management and processes.	
Policies	
3.1	Improve access for the community to information about cemeteries and cemetery processes.
Actions	
A12	Make available information about cemeteries and cemetery plots online.
A13	Update and make available on Council's website and at the front counter of Council offices information to assist with interment processes.
A14	Update and make available to Council staff information and procedures about interment processes to facilitate communication with the public.

Explanation: This objective, policy and actions are about facilitating the day to day operations of cemeteries. Information is essential for communities to be able to meet their needs. Well-informed communities ensure smoother management of cemeteries.

Objective 4

Recognise and respect the heritage values associated with our cemeteries.

Policies

4.1 Support communities to recognise the heritage of their town through their cemeteries.

4.2 Maintain cemeteries so they do not undermine heritage values.

Actions

A15 Provide support to community heritage groups where they propose heritage projects in cemeteries.

Explanation: This objective, policies and actions are ensuring heritage values are not lost and enabling the community the opportunity to reflect the heritage values associated with their cemetery.

5. Cemetery management

Waikato District Council has operating procedures for the management of cemeteries to ensure the consistent and reliable provision of cemetery services in the District. The cemetery bylaws also outline procedures for the management of cemeteries and if any conflict or confusion occurs, then the cemetery bylaws take precedence. Outlined below is an overview of how cemeteries are managed.

5.1 Key Stakeholders

Key stakeholders in cemetery planning and management in addition to the Council are as follows:

- Funeral Directors coordinate and manage the information required for a burial or interment to occur.
- Monumental Masons communicate with Council regarding permits to erect memorials on plots and undertake erection of memorials once they have been approved.

5.2 Plot Purchases

Plot purchases must be made directly from Council or through a Funeral Director. The fees for plot purchases are set from time to time by Waikato District Council, and are available on Council's website www.waidc.govt.nz. An *Application for issue of Interment Warrant* form must be completed when purchasing a plot.

Pre-purchase of plots

Council allows the pre-purchase of plots. Pre-purchase of burial plots is limited to the next available plot. To pre-purchase a plot next to the plot of a recently deceased, applicants are recommended to apply as soon as possible to ensure the plot is available. To arrange pre-purchase of plots, contact must be made with Waikato District Council.

Plot Renewal and Selling Back of Unused Plots

Sometimes purchased plots are never used, and thus can provide valuable interment space in cemeteries. If no interment occurs within 60 years of the plot being purchased, then the Council will try and locate the purchaser or next of kin to confirm if the plot is still required. If they are unable to be located, then the plot ownership reverts back to Waikato District Council in line with section 10 of the Burial and Cremation Act 1964.

Should a plot no longer be required, the plot owner may transfer their interest in such ground to another willing purchaser. Appropriate paperwork indicating the change of ownership must be completed with the Waikato District Council and a fee may apply. The Waikato District Council will not re-purchase already sold plots.

5.3 Burials

Exclusive Burial Rights

No burial may take place without the approval of the plot owner. If the plot owner is deceased the immediate next of kin may give authority or a person acting on behalf of the deceased or the estate can make the application.

Hours for Burials

Interments may take place between the hours of 8.00am and 3.30pm on Mondays to Fridays inclusive, and between 8.00am and 3.00pm on Saturdays. On Sundays and Council and public holidays, cemeteries are closed for all interments.

In circumstances where religious beliefs require interment outside these time frames, this will be accommodated. Applications must be made on the *Application for issue of Interment Warrant* form available from Council's website www.waidc.govt.nz.

Notification of Burial

Notification of all burials must be submitted to Waikato District Council at least 8 working hours before the burial. Applications outside of this timeframe may, as an exception, be considered by the Council in consultation with the burials contractor/sexton, and a late fee will apply. Notification of burial must be made by Council staff on an internal *Warrant to Sexton to Inter* form.

Grave Preparation

Only Waikato District Council's authorised cemetery contractors may dig and prepare the grave in cemeteries managed by the Council.

For burials in graves covered by a concrete cap, only the cemetery contractor or approved monument mason can break the concrete. A fee will apply. It is the responsibility of the plot owner or client to reinstate the concrete cover after burial.

After interment the sexton must complete the relevant section of the *Warrant to Sexton to Inter* form and return it to Council to confirm completion of the work.

Maintenance of Graves

Council's grounds maintenance contractor will sow out in grass and top up any graves within 28 days of interment and will maintain the grave for 6 months following interment. Waikato District Council will maintain all plot surrounds, car parks and other associated assets.

Grave plots, and any associated grave markers or monuments, are the responsibility of the plot owner to maintain. Council is not responsible for the maintenance of concrete tops or other such material found on older style graves. The plot owner has this responsibility.

Floral tributes will be removed 28 days after a burial has taken place.

Dis-interment/ Re-interment

Any application received by Waikato District Council shall be conducted pursuant to Sections 51 and 55 of the Burial and Cremations Act 1964 and any amendments thereto, and subject to the payment of fees as Waikato District Council may determine from time to time.

All intentions for exhumation must be directed to Waikato District Council.

5.4 Ash Interments

Interment

Only the Waikato District Council authorised cemetery contractor may prepare a plot to inter ashes. As for burials, an *Application for issue of Interment Warrant* form that is available on Council's website www.waidc.govt.nz must be completed by the client, and the internal *Warrant to Sexton to Inter* completed by Council staff.

All ash graves will be prepared by Waikato District Council. The funeral director or client may be granted permission to cover over the grave after interment. This permission will only be granted by the Council.

Disinterment of Ashes

Ashes may be disinterred upon request to Waikato District Council, following the same process as for burials.

5.5 Monuments

Installation

Owners of plots or the immediate next of kin of the deceased may apply, using the *Application for Monument Permit* form, for a plot marker, monument or plaque to be erected. The permit must be approved by the Waikato District Council prior to any work commencing.

Only monumental masons or suitably qualified tradespeople recognised by the Council will be permitted to erect monuments, headstones and memorials within any Waikato District Council cemetery.

No person can mix cement or mortar anywhere in the cemetery except on a watertight platform. All necessary precautions must be taken to ensure that no damage is done to footpaths, roads, plots or grass.

Specifications for headstones and plaques are available in the Cemetery headstone and memorial specifications brochure on Council's website www.waidc.govt.nz.

It is the responsibility of the plot owner to ensure that the headstone or plaque is of the correct dimensions for the particular plot concerned. If the Waikato District Council is asked to remove a headstone or plaque, no responsibility will be taken for any damage done in the process of removal.

Maintenance

Maintenance of grave markers and monuments is the sole responsibility of the plot owner. Waikato District Council does not accept responsibility for damage or vandalism to grave markers and monuments.

Removal

The prior consent of Waikato District Council is required to remove any headstone, monument or plaque from any cemetery or grave.

5.6 Cemetery Record Searches

In 2015 cemetery records will be made available online via Waikato District Council's website. This will provide the ability to search for plots online and view photos of headstones along with key information about the deceased.

5.7 Miscellaneous

Indigent (Poor) Persons

Indigent persons may be interred in any cemetery and plot under the control of the Council and in accordance with section 49 of the Burial and Cremation Act 1964.

Vehicles in Cemeteries

Vehicles are only permitted to use designated roadways and car parks whilst in the cemetery. Vehicles may only access cemeteries from:

- 7.00 am to 8.30pm during the months October through to the end of March
- 8.00am to 5.00pm during the months April through to the end of September

The speed limit in all cemeteries is 20km/hr unless posted otherwise.

Dogs and Horses

No dogs or horses are permitted in any Waikato District Council cemetery.

Trees and Shrubs

No tree or shrub may be planted anywhere in the cemetery without the prior consent of the Council being received.

Forms

The following forms can be found on the Council's website www.waidc.govt.nz and are included in Appendix Three.

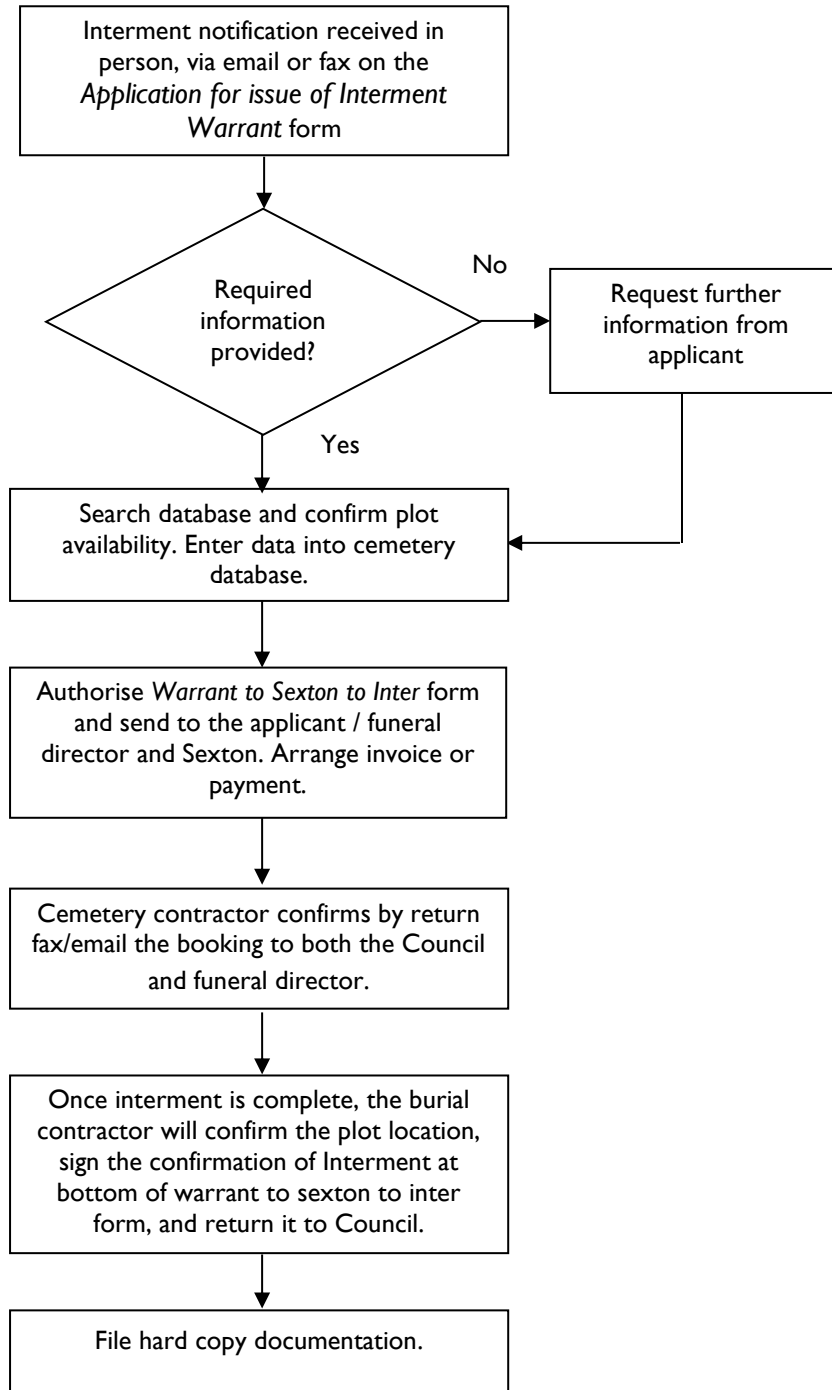
- Application for issue of Interment Warrant (sometimes referred to as Issue for Burial Warrant)
- Application for Monument Permit

The *Warrant to Sexton to Inter* is also included in Appendix Three.

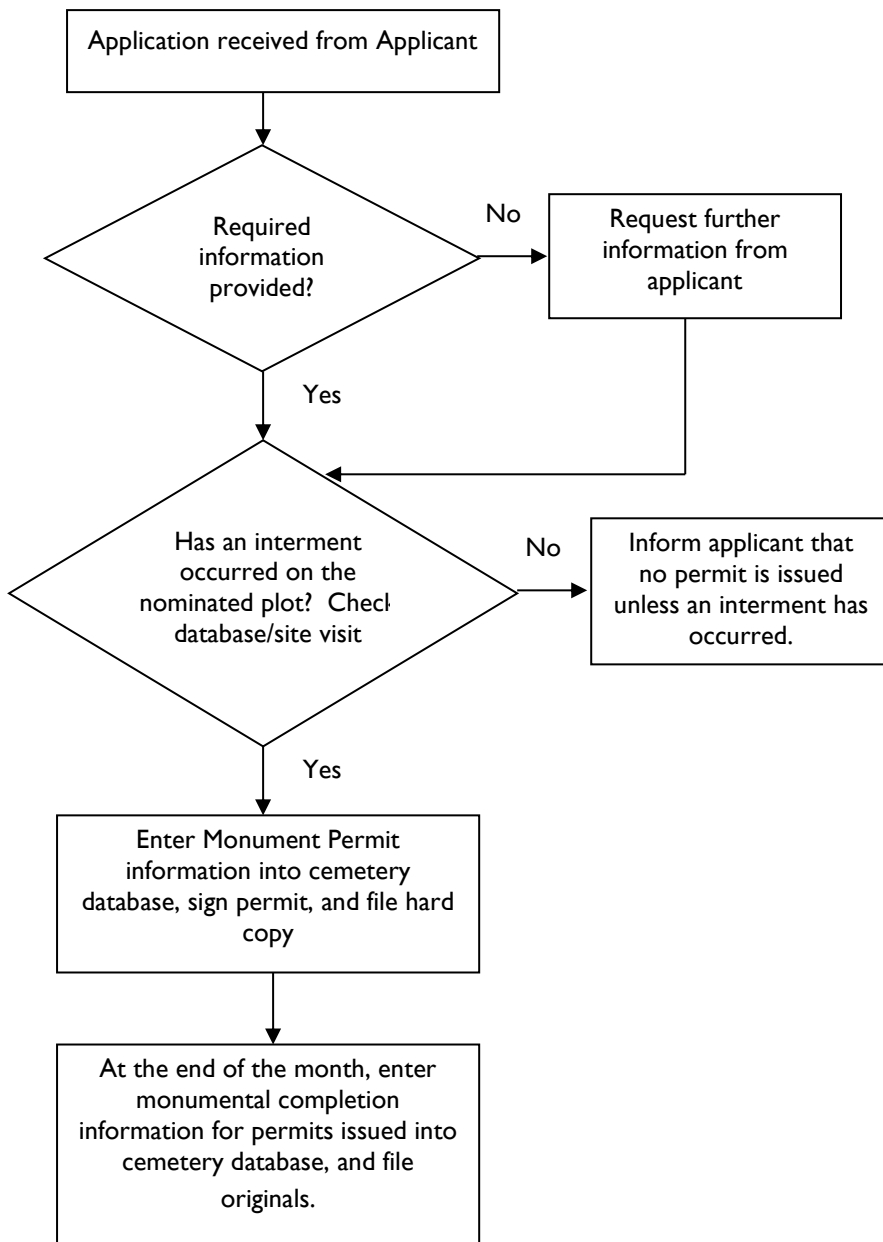
5.8 Operating Procedures Flowcharts

The following flowcharts show how each process is managed to ensure consistency and thoroughness.

Procedure for Authority for interment



Procedure for Monument Permits



Appendix I – Waikato District Council Cemeteries

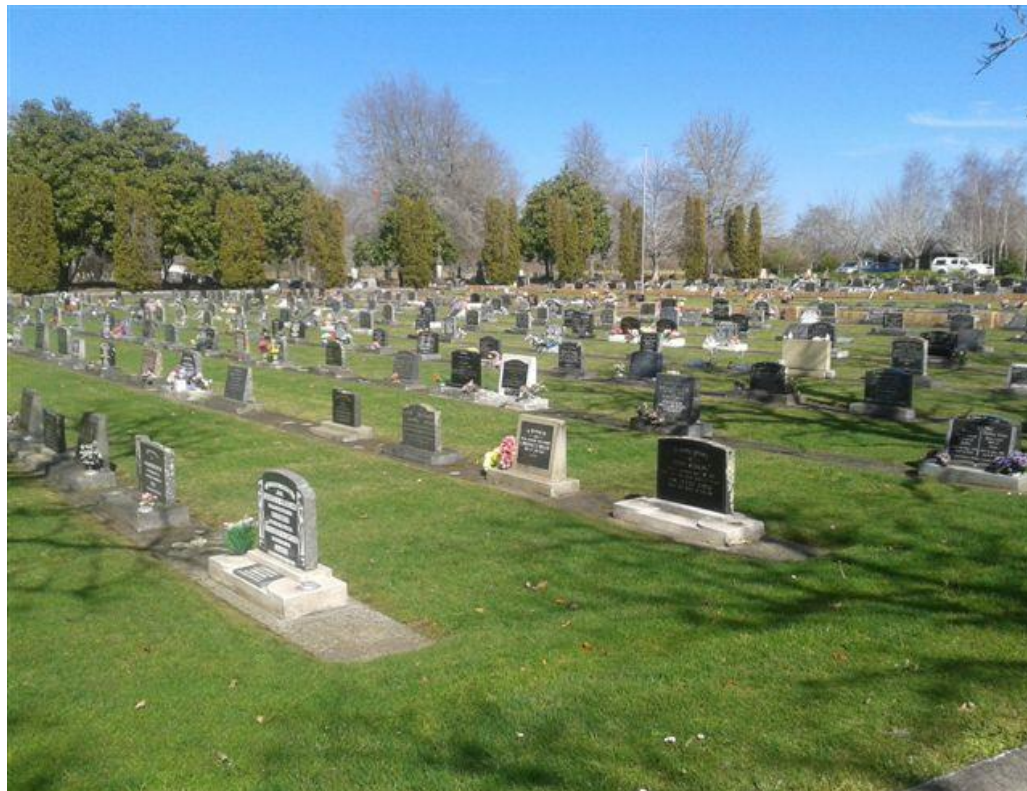
Name:	Alexandra Redoubt Cemetery
Open/Closed:	Cemetery closed to burials. Needs to be formally closed under the Burial and Cremation Act 1964.
Location:	Alexander Redoubt Road, Tuakau http://www.waikatodistrict.govt.nz/Facilities/maps.aspx?cat=/Services/Cemeteries
Legal Description:	Sections 161, 162, 163, 164 and 165 Suburbs of Tuakau. Situated in Block Number IV & VII. Survey District Onewhero. Plan References: SO 57011. NZ Gazette 1985 p 4096
History/ Background:	The remains of Alexandra Redoubt, located near the Waikato town of Tuakau, occupy a commanding position 90 m above the right bank of the Waikato River. A memorial stands near the entrance to the site. It is dedicated to the imperial and colonial troops, known and unknown, who died in the Franklin district in 1863–64. The approximate number of burials including ashes interments is 314.
Area (Ha):	1.3178ha
Land Status/ Reserve Classification:	Scenic reserve



Name:	Gordonton Cemetery
Open/Closed:	Open
Location:	Gordonton Road http://www.waikatodistrict.govt.nz/Facilities/maps.aspx?cat=/Services/Cemeteries
Legal Description:	Part Allotment 233 Kamakorau Parish. Situated in Block Number VI. Survey District Komakorau. Plan References SO 132 sheet 2. NZ Gazette 1981 p1129.
History/ Background:	<p>In the early 1960's local farmers used their tractors to deconstruct their family plots, saving only the head stones, and discarding all other concrete. They then cast concrete strips, across the head of the family plots, on which they remounted the head stones. Close inspection, of the original section, reveals the patch work nature of the adjoining strip sections, as more and more graves were converted, by family, to the lawn system of plot cover.</p> <p>A notable fact about this cemetery is that the local Henry and Pene families chose in the 1930's to stay in the community which they loved and to lie with their European neighbours. This is a tradition that continues to this day.</p> <p>Approximate number of burials including ashes interments are 463.</p>
Area (Ha):	1.821ha
Land Status/ Reserve Classification:	Local Purpose Cemetery Reserve – NZ Gazette 1981 p336



Name:	Huntly Kimihia Cemetery
Open/Closed:	Open
Location:	Great South Road, Huntly
Legal Description:	Pt Allot 14A Taupiri Psh Pt Allot 14B Taupiri Psh Lots 1, 2 and 3 DPS 3800
History/ Background:	<p>Huntly Cemetery is located on State Highway 1 north of Huntly Township. Huntly (Kimihia) Public Cemetery contains the official war graves of four men who served in the New Zealand forces during the First World War.</p> <p>On Saturday September 12 1914 one of the country's worst mining disasters occurred in Huntly. The entire town turned out to the mass funeral of the 43 men who lost their lives. Their bodies are interred in Huntly Heritage Cemetery.</p> <p>The approximate number of burials including ashes interments are 4,525. The cemetery also contains an area set aside for children's burials.</p>
Area (Ha):	3.6237
Reserve Classification:	Public Reserve (s332(9) Municipal Corporations Act 1933) Cemetery Reserve (NZ Gazette 1879 p1438) Fee Simple



Name:	Jackson Street Cemetery
Open/Closed:	Open
Location:	Jackson Street, Ngaruawahia
Legal Description:	Allot 81 Suburbs of Newcastle South
History/Background:	Approximate burials including ashes interments are 547. There is a separate area set aside within the Jackson Street Cemetery which accommodates Muslim burials, and another that caters for children's burials.
Area (Ha):	5.4457 ha - Note that part of this site may be taken for a water reservoir
Land Status/Reserve Classification:	Cemetery reserve – NZ Gazette 1879 p 1757 and 1758



Name:	Maramarua Cemetery
Open /Closed:	Open
Location:	State Highway 2, Maramarua http://www.waikatodistrict.govt.nz/Facilities/maps.aspx?cat=/Services/Cemeteries
Legal Description:	Allotment 73 Maramarua Parish. CT SA 31D/509 NZ Gazette 1981 p1129
History/ background:	A farming locality on State Highway 2, 21 km east of Pokeno. Maramarua has a small Cemetery located to the east of the township. The approximate number of burials including ashes interments are 225.
Area (Ha):	2.0234
Land Status/ Reserve Classification:	Local Purpose Reserve (Cemetery)



Name:	Mercer Cemetery
Open/Closed:	Open
Location:	Glass Road, Mercer http://www.waikatodistrict.govt.nz/Facilities/maps.aspx?cat=/Services/Cemeteries
Legal Description:	Allotments 96A and 96B Koheroa Parish. SO 2587, SO 2973 I.
History/ Background:	The cemetery is located to the east of the Mercer township over the other side of State Highway 1. The first burials recorded in the cemetery date back to the early 1900s. Approximate burials including ashes interments are 230.
Area (Ha):	2.065 ha
Land Status/ Reserve Classification:	Allotment 96A – Cemetery Reserve NZ Gazette 1881 p1221 Allotment 96B – Crown land subject to the Land Act 1948



Name:	Ngaruawahia Old Cemetery
Open/Closed:	Open
Location:	Great South Road, Ngaruawahia
Legal Description:	Allot 81 Suburbs of Newcastle South Allot 557 Suburbs of Newcastle South Part Allot 574 suburbs of Newcastle South Part lot 31 DPS 10156
History/ Background:	Ngaruawahia Public Cemetery is located on State Highway 1 south of Ngaruawahia township. It contains the official war grave of a man who served in the New Zealand forces during the First World War. Rifleman Harry Booth died of acute meningitis on 9 December 1919. Approximate burials including ashes interments are 2,961. The cemetery contains an area set aside for children's burials.
Area (Ha):	5.4457
Land Status/ Reserve Classification:	Cemetery Reserve (NZ Gazette 1879 p 1757 and 1758) and Fee simple land



Name:	Okete Cemetery
Open/Closed:	Open
Location:	SH23 opposite Te Mata Road http://www.waikatodistrict.govt.nz/Facilities/maps.aspx?cat=/Services/Cemeteries
Legal Description:	Part Allotment 36 Whangaroa Parish. CFR SA 576/300 Allotment 251 Whangaroa Parish. CFR SA 14B/604
History/ Background:	The Okete Cemetery was vested in the Raglan County Council in 1971, following the removal of the (Congregational Church) . The cemetery is the resting place of many of the district pioneers. Like the Te Mata cemetery, the Okete cemetery was administered by the Okete Cemetery Committee until 2008, when Council assumed responsibility for maintenance and burials. A large cairn is erected on the church site, built of local basalt stone in 1971.
Area (Ha):	6,084m ²
Land Status/ Reserve Classification:	Fee simple land



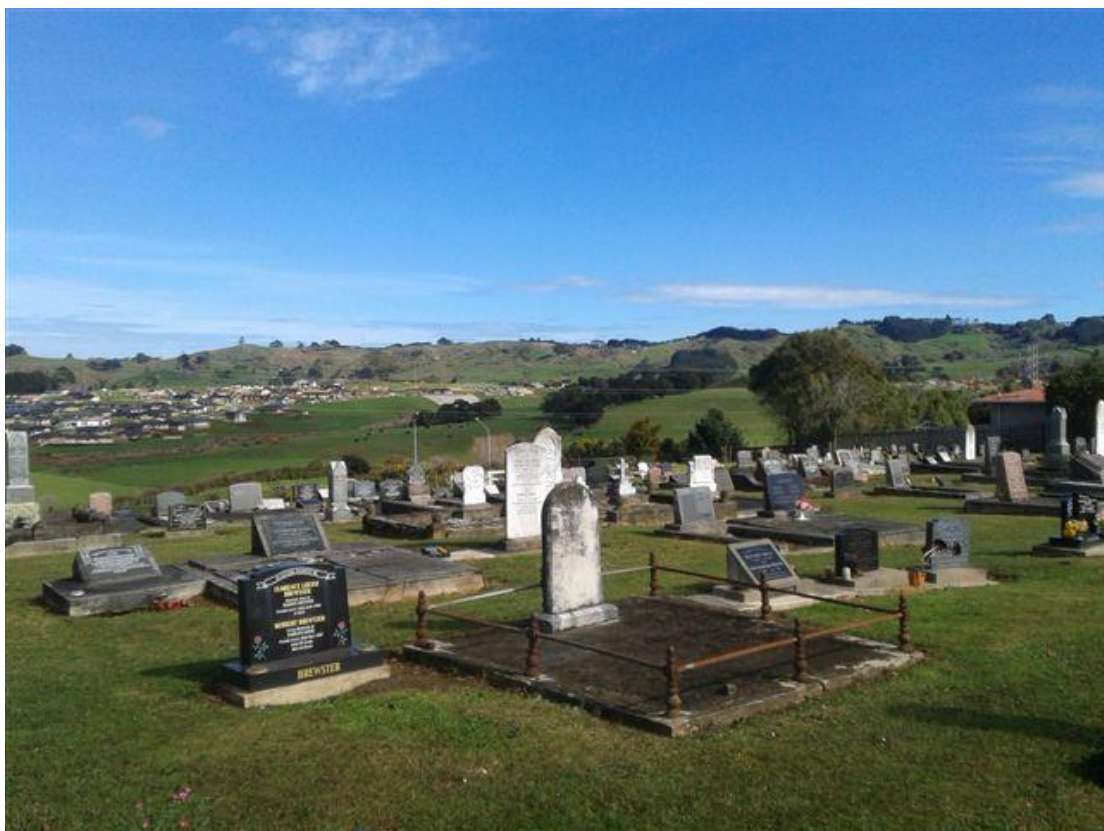
Name:	Onewhero Cemetery
Open/Closed:	Open
Location:	Kaipō Flats Loop Road, Onewhero http://www.waikatodistrict.govt.nz/Facilities/maps.aspx?cat=/Services/Cemeteries
Legal Description:	Section 97 Onewhero Parish. Plan Reference SO 4248. NZ Gazette 1891 p1491
History/ Background:	The first burials recorded in the cemetery date back to the early 1920s. Approximate burials including ashes interments are 104.
Area (Ha):	2.8328
Land Status/ Reserve Classification:	Cemetery Reserve



Name:	Orini Cemetery
Open/Closed:	Open
Location:	Orini Road http://www.waikatodistrict.govt.nz/Facilities/maps.aspx?cat=/Services/Cemeteries
Legal Description:	Section 4 Rewi Settlement. Plan Reference DP 21456. NZ Gazette 1981 pp1129.
History/ Background:	Orini Cemetery is located on Orini Road and serves the small Waikato settlement of Orini. Approximate number of burials including ashes interments are 61.
Area (Ha):	4047 (square metres)
Land Status/ Reserve Classification:	Local Purpose (cemetery site) Reserve



Name:	Pokeno Cemetery
Open/Closed:	Open
Location:	Fraser Road, Pokeno http://www.waikatodistrict.govt.nz/Facilities/maps.aspx?cat=/Services/Cemeteries
Legal Description:	Sections 1 and 2 SO 328385. SO 328385. CFR 71380 & 71382. NZ Gazette 2002 p4011, NZ Gazette 1937 p2518, and NZ Gazette 1886 p1307
Area (Ha):	7472 square metres
Land Status/ Reserve Classification:	Local Purpose (Cemetery) Reserve



Name:	Pokeno Old Soldiers Cemetery
Open/Closed:	Cemetery closed to burials. Needs to be formally closed under the Burial and Cremation Act 1964.
Location:	Corner of Helenslee and Munro Road, Mangatawhiri http://www.waikatodistrict.govt.nz/Facilities/maps.aspx?cat=/Services/Cemeteries
Legal Description:	Part Allot 14 PSH OF Mangatawhiri (D) 23727) CT NA 630/115
History/ Background:	Pokeno Historic Cemetery is located on Helenslee Road opposite its junction with Munro Road, 1 km north-west of Pokeno. A distinctive memorial cairn stands near the front of the cemetery. Topped with a cluster of stacked rifles (Snider carbines, which were not used in the Waikato War), it records the names of 24 imperial and colonial troops who died during the Waikato War and are thought to be buried nearby.
Area (Ha):	4,001m ²
Land Status/ Reserve Classification:	Fee simple land



Name:	Raglan Cemetery
Open/Closed:	Open
Location:	East Street, Raglan http://www.waikatodistrict.govt.nz/Facilities/maps.aspx?cat=/Services/Cemeteries
Legal Description:	Allotments 6 and 7 Section 13 Raglan Township. NZ Gazette 1879 p894.
History/ Background:	The Raglan Cemetery in East street was originally called the Raglan Burial Ground. The first recorded burial was of Thomas Wallis, the son of Raglan's first missionary, on 5 October 1866. Family members of the pioneers still live in Raglan today. In 1876 the cemetery came under the control of the Raglan County Council. In 2007 the Waikato District Council extended the available land at the cemetery to include the horse paddock, filling in the gully and piping the area to make the land usable. In 2005 ashes berms were also added. The old cemetery records were destroyed in the Raglan Town Hall fire of 1927, but one book – the 1907 register - survived as it had been removed for audit. The 1907 register has been in continuous use through to the present day. The Registrar of Deaths in Wellington recently gave Council approval to search the historic records and reconstruct the cemetery register back to 1866. This collaborative approach proved very successful and all persons in the Death register were accounted for in the cemetery and vice versa.
Area (Ha):	8,494m ²
Land Status/ Reserve Classification:	Cemetery Reserve



Name:	Rangiriri Cemetery
Open/Closed:	Open
Location:	Te Wheoro Road http://www.waikatodistrict.govt.nz/Facilities/maps.aspx?cat=/Services/Cemeteries
Legal Description:	Allotment 11 Rangiriri Suburbs. Situated in Block Number III. Survey District Rangiriri. SO 2781B. NZ Gazette 1981 p1129
History/ Background:	<p>On 24 July 2000 New Zealand soldier Private Leonard William Manning was shot dead by militia while serving with United Nations peacekeeping forces in East Timor. At the age of 24 years, he was New Zealand's first combat fatality since the Vietnam War.</p> <p>A memorial was erected to Private Manning in the Tilomar cemetery. However, his body was brought back to New Zealand, and on 29 July 2000 he was buried with full military honors in the Rangiriri lawn cemetery, near his childhood home in Waeranga. His plain granite headstone reads: "East Timor/ A997234 Pte / Leonard W. Manning / R.N.Z.I.R. / Died 24.7.2000 / Aged 24 years / Killed in action."</p> <p>The Rangiriri lawn cemetery is in Te Wheoro Road, not far from the Rangiriri Redoubt, the site of a pitched battle during the Waikato War. On the far side of the Waikato Expressway is the Rangiriri Hotel which houses a 'Lenny Manning corner'. The cabinet displaying photographs, mementoes and memorabilia relating to Private Manning was originally set up by Neil and Beth Davidson in the bar of the Globetrotters' Lodge, Darwin. In 2002 the Davidsons donated the collection to the Manning family. The NZ Defence Force undertook delivery to the Rangiriri Hotel. There is also a Manning memorial tablet in the Te Kauwhata RSA hall.</p> <p>Private Manning was awarded the New Zealand Operational Service Medal (NZOSM) posthumously in 2003. The East Timor School Trust awards a Leonard Manning Memorial scholarship annually.</p>
Area (Ha):	1.0466ha
Land Status/ Reserve Classification:	Local Purpose Reserve (Cemetery)



Name:	Rangiriri Old Cemetery
Open/Closed:	Cemetery closed to burials. Needs to be formally closed under the Burial and Cremation Act 1964.
Location:	Rangiriri Road http://www.waikatodistrict.govt.nz/Facilities/maps.aspx?cat=/Services/Cemeteries
Legal Description:	Lot 2 DP 31569. Plan References: DPS 31569. Instrument of Title CFR 116523.
History/ Background:	Rangiriri is a small town on State Highway 1, 17 km north of Huntly in Waikato. Here, on 20 November 1863, British troops and Waikato Maori sustained more casualties than in any other engagement during the New Zealand Wars. 'Bloody Rangiriri' was the decisive battle of the Waikato War. A memorial obelisk is situated in the Rangiriri cemetery. It records the names of 42 men from the Royal Artillery, 1st Battalion 12th Regiment, 2nd Battalion 14th Regiment, 40th Regiment and 65th Regiment who died as a result of the battle at Rangiriri. The unveiling of a memorial gateway on 13 April 1927 marked the completion of

	restoration work on the cemetery that had begun in 1925. This cemetery is identified as a mass burial ground.
Area (Ha):	1299m ²
Land Status/ Reserve Classification:	Cemetery Purposes (Public Work)



Name:	Taupiri Cemetery
Open/Closed:	Open
Location:	Gordonton Road http://www.waikatodistrict.govt.nz/Facilities/maps.aspx?cat=/Services/Cemeteries
Legal Description:	Pt Allot 339 Komakorau Parish CT SA 26A/898 (not reserve) Pt Allot 242 Komakorau Parish. Local Purpose (cemetery site) reserve NZ Gazette 1981/1129 Cemetery encroaches on adjacent private land
History/ Background:	Taupiri Cemetery is located on Gordonton Road just south of Taupiri Mountain. The approximate number of burials including ashes interments is 400.
Area (Ha):	1.4
Land Status/ Reserve Classification:	Fee simple and Local Purpose (Cemetery site) Reserve



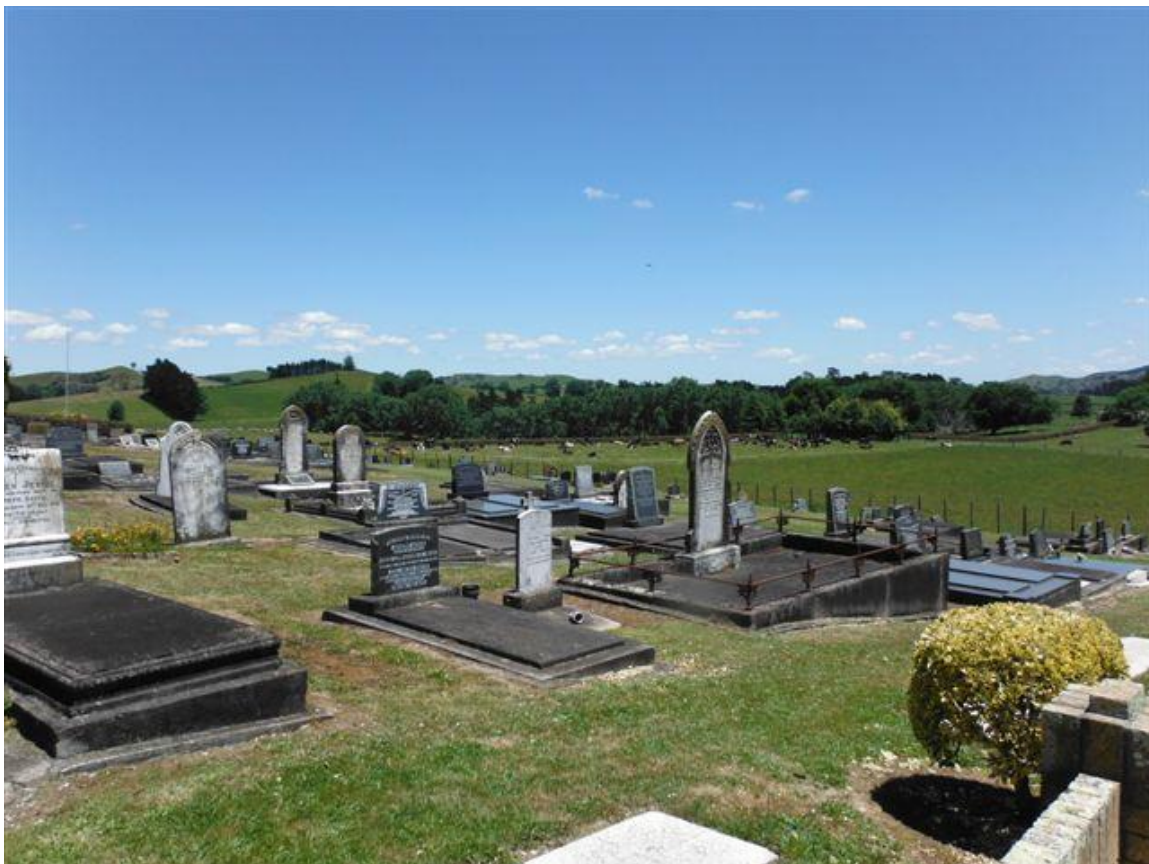
Name:	Te Mata Cemetery
Open/Closed:	Open
Location:	Corner of Tepapatapu and Kawhia Roads http://www.waikatodistrict.govt.nz/Facilities/maps.aspx?cat=/Services/Cemeteries
Legal Description:	Lot 1 DPS 1865 CT SA 1088/40
History/ Background:	The Te Mata cemetery was created on 16 October 1953 after one acre of land was purchased from the neighbouring farmer. The Cemetery was administered by the Te Mata Cemetery Committee until 2012, when it reverted to the control of the Waikato District Council.
Area (Ha):	4,047m ²
Land Status/Reserve Classification:	Fee simple land



Name:	Tuakau Cemetery
Open/Closed:	Open
Location:	Alexander Redoubt Road http://www.waikatodistrict.govt.nz/Facilities/maps.aspx?cat=/Services/Cemeteries
Legal Description:	Section 166 Suburbs of Tuakau. SO 57011.
History/ Background:	Tuakau Cemetery is situated south west of Tuakau Township on the Alexandra Redoubt Road. The first burials recorded in the cemetery date back to the late 1800s. Tuakau cemetery also provides for the needs of Baha'i burials and contains an area set aside for children's burials.
Area (Ha):	1.1407
Land Status/Reserve Classification:	Local Purpose (cemetery) reserve



Name:	Waerenga Cemetery
Open/Closed:	Open
Location:	Keith Road, Waerenga http://www.waikatodistrict.govt.nz/Facilities/maps.aspx?cat=/Services/Cemeteries
Legal Description:	Allotment 341 Whangamarino Parish. Situated in Block Number III. Survey District Rangiriri. SO1895. NZ Gazette 1981 p1129.
History/ Background:	Waeranga Cemetery is located on Keith Road, Waeranga. The cemetery incorporates a large RSA section. The approximate number of burials including ashes interments are 419.
Area (Ha):	2.0234
Land Status/ Reserve Classification:	Local Purpose (cemetery) Reserve



Name:	Waiterimu/Matahuru Cemetery
Open/Closed:	Open
Location:	Waiterimu Road http://www.waikatodistrict.govt.nz/Facilities/maps.aspx?cat=/Services/Cemeteries
Legal Description:	Allotment 42B Whangamarino Parish. SO 13628. NZ Gazette 1981 p1129.
History/ Background:	Matahura/Waiterimu Cemetery is nestled in foothills east of TeKauwhata township. A relatively small cemetery in an idyllic peaceful setting. The approximate number of burials including ashes interments is 163.
Area (Ha):	2.0234
Land Status/Reserve Classification:	Local Purpose (Cemetery) Reserve

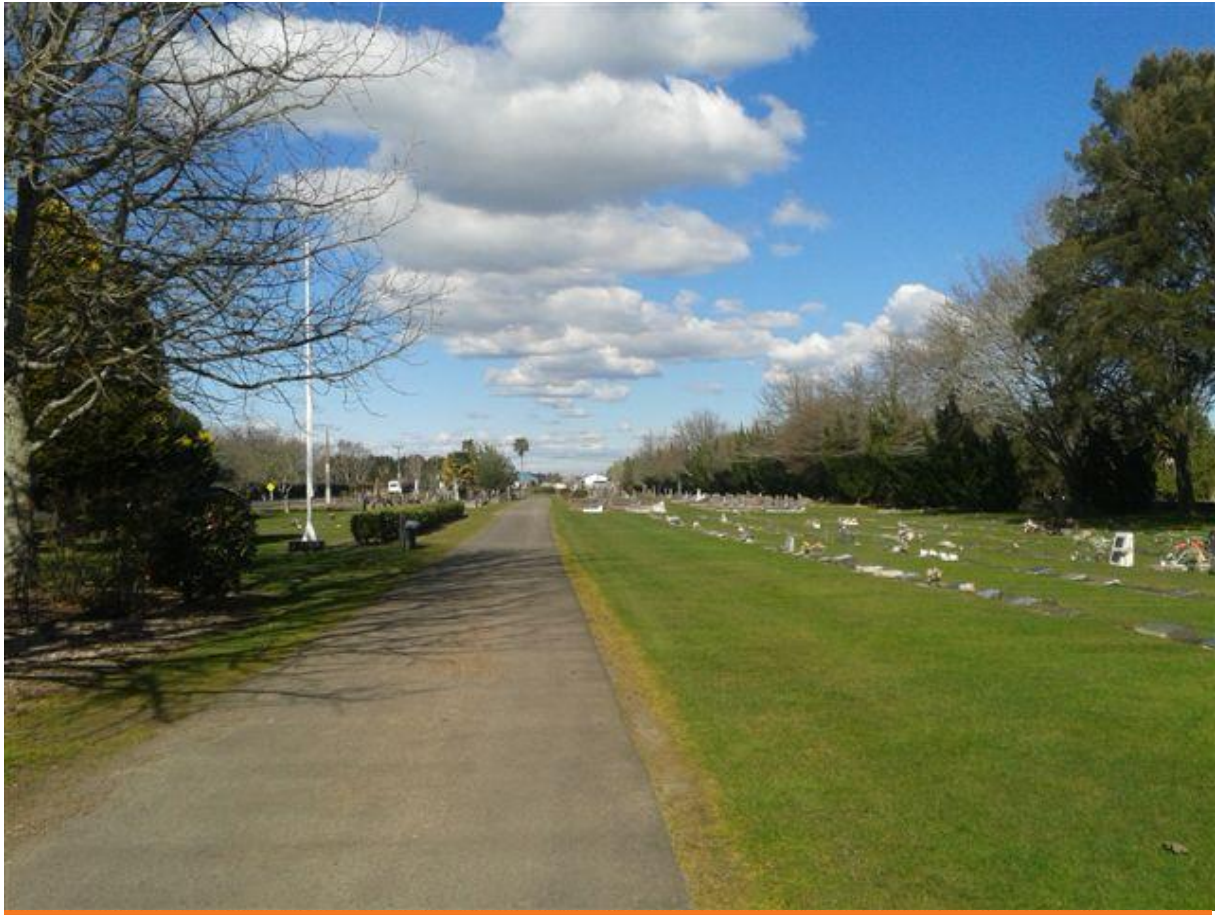


Name:	Whatawhata Cemetery
Open/Closed:	Open
Location:	Cemetery Road http://www.waikatodistrict.govt.nz/Facilities/maps.aspx?cat=/Services/Cemeteries
Legal Description:	Allotment 190A Pukete Parish. SO 13199. NZ Gazette 1982/1451
History/ Background:	Whatawhata Cemetery is located on Cemetery Road in the Waikato township of Whatawhata, about 10 km west of Hamilton. Standing in the cemetery grounds is a fenced off memorial which records the names of seven imperial and colonial troops who died during the New Zealand Wars. Very little is known about the men listed on this memorial. Only one of the seven, Joseph Clarkson, has been found on the official casualty lists. Clarkson, a private in the 1st Battalion, 12th Regiment, died on 25 April 1865, a year after the end of the Waikato War. His cause of death is unknown. Approximate number of burials including ashes interments are 504.
Area (Ha):	4.0266
Land Status/Reserve Classification:	Local Purpose Reserve (Cemetery)



Cemetery Name	RSA	Lawn	Children's Lawn	Octagonal Ashes	Ashes Berm	Memorials	Religious area
Alexandra Redoubt Cemetery		✓					
Gordonton Cemetery		✓			✓	✓	
Huntly Kimihia Cemetery	✓	✓	✓	✓	✓		
Jackson Street Cemetery	✓	✓	✓	✓	✓		✓ (Muslim)
Maramarua Cemetery		✓		✓	✓		
Mercer Cemetery		✓					
Ngaruwahia Old Cemetery	✓	✓	✓				
Okete Cemetery		✓					
Onewhero Cemetery		✓			✓		
Orini Cemetery		✓		✓			
Pokeno Cemetery		✓			✓		
Pokeno Old Soldiers Cemetery		✓				✓	
Raglan Cemetery		✓			✓		
Rangiriri Cemetery		✓		✓	✓		
Rangiriri Old Cemetery		✓					
Taupiri Cemetery		✓		✓	✓	✓	
Te Mata Cemetery		✓					
Tuakau Cemetery	✓	✓	✓		✓	✓ (For RSA only)	✓ (Baha'i)
Waerenga Cemetery	✓	✓			✓		
Waiterimu/ Matahuru Cemetery		✓			✓		
Whatawhata Cemetery		✓			✓		

Appendix 2 - Waikato District Cemetery Projections



macro perspective  micro analysis

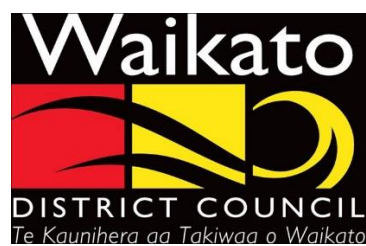
Waikato District Cemetery Strategy Projections

November 2014

Report prepared by:



for:



Quality Assurance Statement

Rationale Limited
5 Arrow Lane
PO Box 226
Arrowtown 9302
New Zealand
Phone/Fax: +64 3 442 1156

Project Director: Edward Guy
Project Manager: Walter Clarke
Prepared by: Walter Clarke
Approved for issue by: Tom Lucas

Document Control

G:\1 - Local Government\Waikato District Council\WDC Cemetery Strategy Projections.docx

Rev No.	Date	Revision Details	Prepared by	Reviewed by	Approved by
1	13/10/2014	Draft for Client	WC	KJ/TL	TL
2	01/11/2014	Final	WC	KJ/TL	TL

Table of Contents

Executive Summary	1
1 Introduction	3
2 Method	4
2.1 Supply	6
2.2 Demand	9
2.2.1 Historical Background	9
2.2.2 Projected Demand	10
3 Results	13
3.1 Overview	13
3.2 Key Findings	15
Appendix	18
Gordonton Cemetery	19
Huntly Kimihia Cemetery	20
Jackson Street Cemetery	21
Maramarua Cemetery	22
Matahura/Waiterimu Cemetery	23
Mercer Cemetery	24
Muslim Cemetery	25
Ngaruawahia Old Cemetery	26
Okete Cemetery	27
Onewhero Cemetery	28
Orini Cemetery	29
Pokeno Cemetery	30
Raglan Cemetery	31
Rangiriri Cemetery	32
Taupiri Cemetery	33
Te Mata Cemetery	34
Tuakau Cemetery	35
Waerenga Cemetery	36
Whatawhata Cemetery	37

Executive Summary

Rationale Limited has been engaged to provide supply and demand projections for the Waikato District Council (WDC) cemeteries. The objective of this study is to assist WDC in developing the cemetery strategy for the management and provision of future land for cemeteries in the district. The study period is 30 years (2015 to 2045).

The WDC is responsible for 22 cemeteries. Of these, the Alexandra Redoubt Cemetery, Pokeno Old Soldiers Cemetery and Rangiriri Old Cemetery are all closed with no further development planned. There are also privately owned cemeteries and numerous Urupa in the district.

The focus of the study is on the plots required for casket burials required on the WDC owned cemeteries. Non-council and private cemeteries, and the small amount of land used for interment of cremations were excluded from the scope of this study. They have however been considered in the demand assessment.

A supply and demand model has been developed to cater for a range of scenarios. The model is informed by historical data and future projections from WDC and Statistics New Zealand.

The study considers both actively maintained land and additional available land, not yet developed for cemetery purposes. The district-wide supply is summarised in the table below:

	Number of Burial Plots
Existing number of burials on actively maintained land	11,700
Residual supply of actively maintained land	4,200
Residual supply of additional land	18,000 to 26,000
Total	33,900 to 41,900

Over the 30 year study period, the number of deaths in the district are projected to increase from around 400 to around 700 per year. The increase is due to population growth and the impact of an ageing population. The number of casket burials at WDC cemeteries over the same period are projected to increase from around 110 per year to over 200 burials per year.

The results focus on the best estimate (base case) and the worst case (assuming lower supply and higher demand). The key findings based on the assumptions under the base case are shown in the following table. The cemeteries are grouped into categories showing the capacity status or redevelopment work required.

Category	Number of cemeteries in category	Cemetery	Year	Residual Capacity at 2045
Already closed	3	Alexandra Redoubt		0
		Pokeno Old Soldiers		0
		Rangiriri Old		0
Total capacity reached within the next 30 years – to be closed	4	Ngaruawahia Old	2016	0
		Tuakau	2016	0
		Huntly Kimihia ¹	2035	0
		Pokeno	2040	0
Redevelopment of additional land required in the next five years	3	Te Mata	2015	190
		Rangiriri	2017	320
		Whatawhata	2017	4,230
Redevelopment of additional land required – 2020 to 2024	3	Matahura/Waiterimu	2020	1,760
		Huntly Kimihia ¹	2023	0
		Waerenga	2024	1,520
Redevelopment of additional land required – 2025 to 2045	5	Gordonton	2027	150
		Maramarua	2035	1,590
		Okete	2035	270
		Jackson Street	2040	2,760
		Orini	2045	340
Sufficient residual capacity available until at least 2045	5	Mercer	n/a	1,620 ²
		Muslim	n/a	25
		Onewhero	n/a	2,860 ²
		Raglan	n/a	240
		Taupiri	n/a	3,350 ²

1. The Huntly Kimihia is projected to require redevelopment in 2023 and reach total capacity around 2035.

2. Includes the residual capacity of additional land not projected to be required until post 2045.

The number of casket burials at WDC cemeteries between 2015 and 2045 is projected to be between 5,000 and 7,200. Under the base case there are projected to be over 21,200 burial plots still available in the WDC cemeteries at the end of the 30 year study period. Under the worst case, this residual capacity in 2045 would be reduced to less than 15,000 burial plots. Despite some cemeteries being projected to reach capacity, all parts of the district are forecast to have surplus capacity in nearby cemeteries.

The appendix includes a detailed overview of the key findings for each cemetery. These have been developed to be inserted as summary information in the cemetery strategy and includes:

- A brief synopsis of the findings, including both the base and worst case scenario.
- A summary supply and demand graph showing both historical figures and future projections under the base case and the worst case.
- A summary table showing the key outputs.

Introduction

The Waikato District Council (WDC) is responsible for 22 cemeteries. There are also privately owned cemeteries and numerous Urupa in the district.

WDC are developing a Cemetery Strategy to examine the current service and availability of cemeteries within the district for future planning requirements. A key component of the strategy is understanding the existing supply of suitable cemetery land and comparing this to the likely demand for burial sites throughout the district. The objective of this study is to provide a supply and demand model to guide WDC in developing the strategy for the management and provision of future land for cemeteries in the district. The study period is 30 years (2015 to 2045).

The cemeteries considered in this study are listed below:

Gordonton Cemetery	Orini Cemetery
Huntly Kimihia Cemetery	Pokeno Cemetery
Jackson Street Cemetery	Raglan Cemetery
Maramarua Cemetery	Rangiriri Cemetery
Matahura/Waiterimu Cemetery	Taupiri Cemetery
Mercer Cemetery	Te Mata Cemetery
Muslim	Tuakau Cemetery
Ngaruawahia Old Cemetery	Waerenga Cemetery
Okete Cemetery	Whatawhata Cemetery
Onewhero Cemetery	

The Alexandra Redoubt Cemetery, Pokeno Old Soldiers Cemetery and Rangiriri Old Cemetery are all closed with no further development planned. Therefore for the purpose of this study, no further demand was allocated to these cemeteries. The non-council and private cemeteries were also excluded from scope of this study.

Method

The focus of this study is on the burial plots available and required for casket burials. Interment of cremations at the WDC cemeteries has not been considered due to the small land area required for these types of internments.

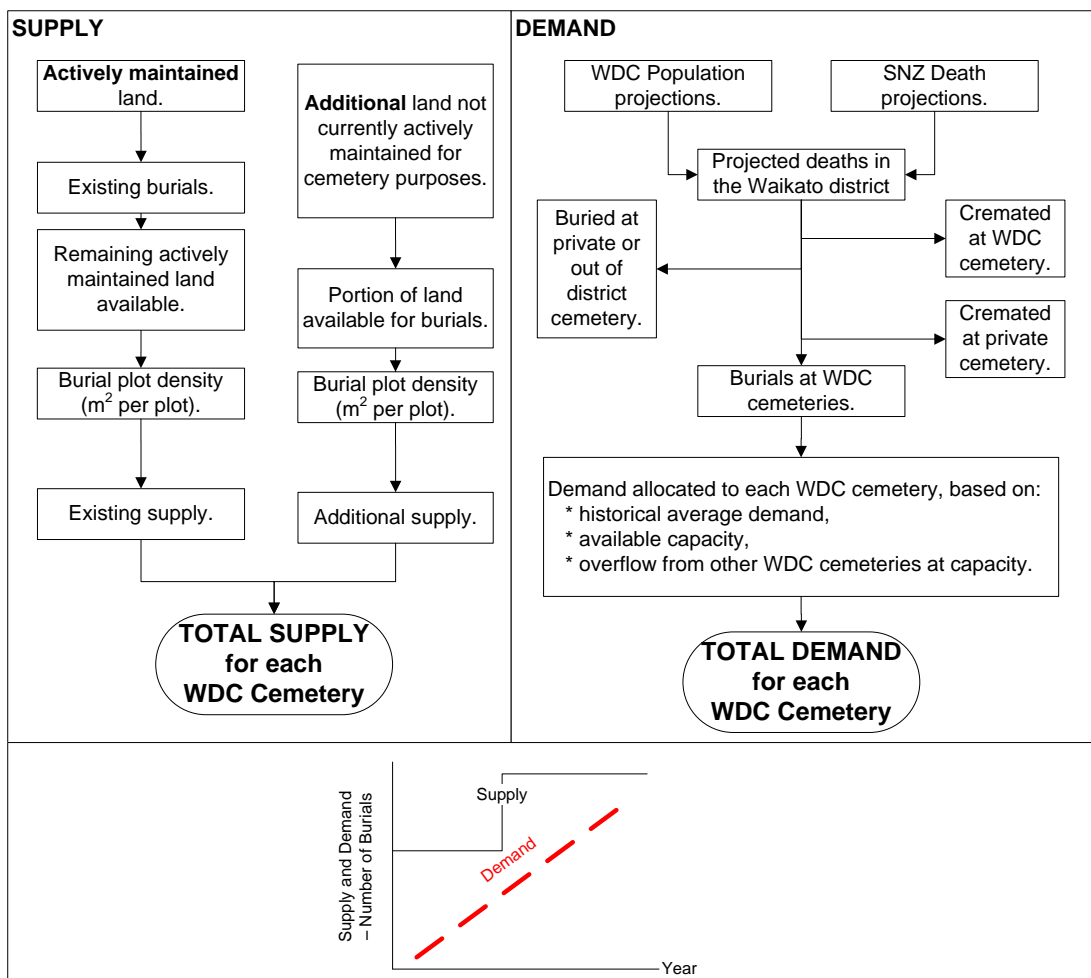
The supply and demand model has been built to consider the following scenarios:

- Base case - this is the most likely scenario based on the data available and the assumptions agreed with council officers.
- Worst case - this is a scenario to demonstrate how each cemetery would be affected if there was higher demand and lower supply.
- Best case - this is a scenario to demonstrate how each cemetery would be affected if there was lower demand and higher supply.

The focus of this report is the base case and the worst case scenario. The best case scenario is of less relevance as it is unlikely to be suitable for planning future development.

An overview of the method is shown in the following diagram.

Figure 1 : Supply and demand methodology overview



The two sides of the supply and demand model are explained in further detail in the following sections.

Supply

The supply for future casket burials is quantified using the number of burial plots available. The supply side has been split into two components:

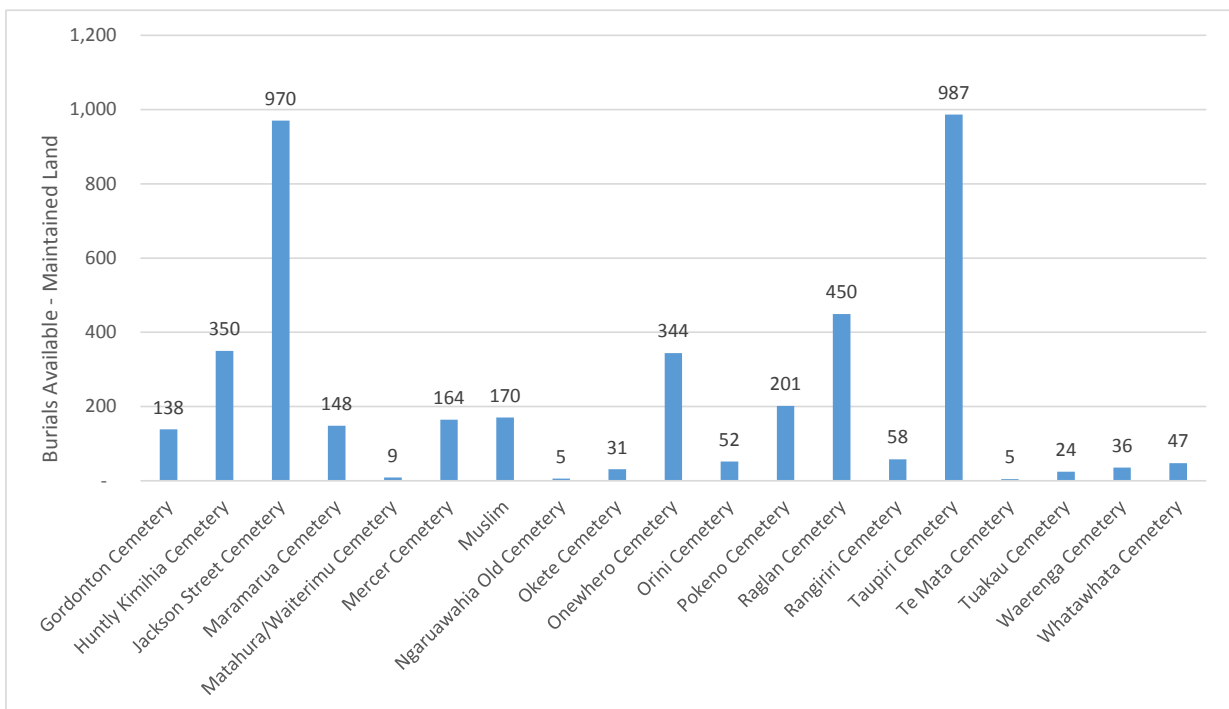
1. Further utilisation of actively maintained land.
2. Development of land that is available but not currently actively maintained for cemetery purposes. Not all cemeteries have this type of land available for future development.

The existing supply (as at 2014) of actively maintained land for each cemetery has been based on the following parameters:

- The total area of actively maintained land that is available for burial plots
- The number of burials to date
- The density of existing burial plots.

The supply outputs on actively maintained land have been agreed with council officers to provide the following 2014 supply of burial plots. The total existing capacity for the district is over 4,000 burial plots, however a number of cemeteries are nearing capacity.

Figure 2 : Burial plots available on actively maintained land

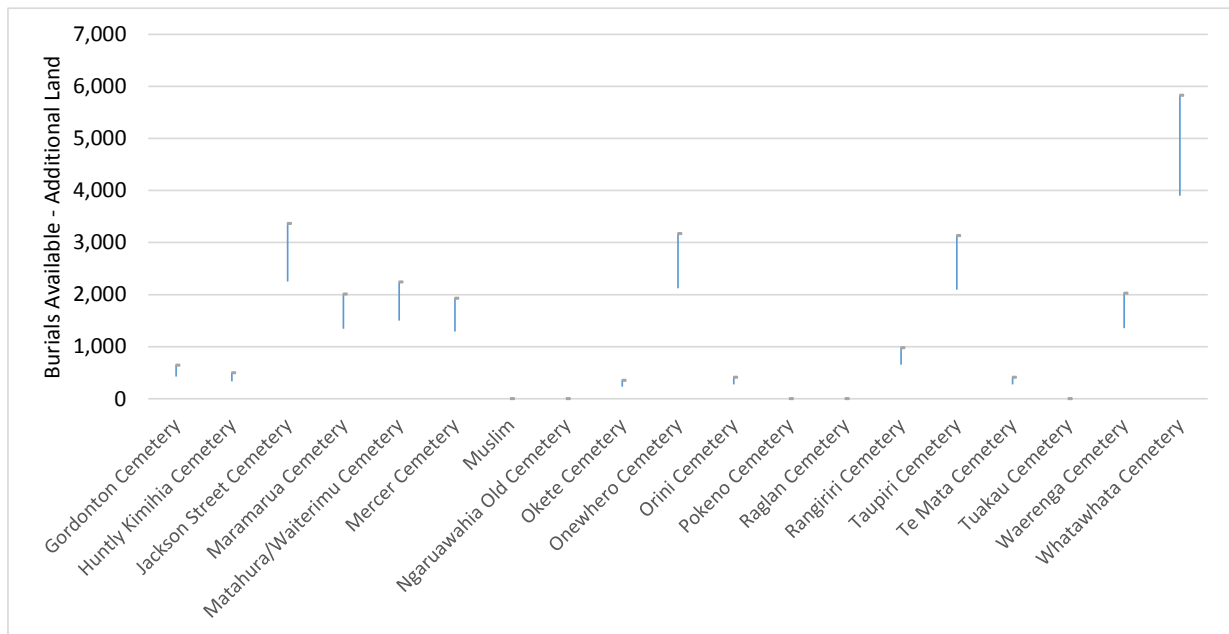


A similar approach has been used for the development of additional land that is not currently maintained for cemetery purposes. However the portion of land available for burials and the density of burial plots are input variables that can be modified to model a range of supply scenarios. The key assumptions are:

- That 80% of the additional land will be suitable for cemetery purposes. The remaining 20% is assumed to be used for green spaces, eco-burials, car parks, driveways and pathways. This assumption has been agreed with Council officers.
- The density of burial plots is 8.3m² per burial plot. This is based on guidance from WDC's Cemetery Planning Manual where each plot is 2.2m x 0.75m with a space of 0.75m on all four sides. This density is applied as an average. In reality there will be some plots that are dug to include two caskets and also some pre-booked plots. The overall average and scenarios discussed below account for these factors and how they influence the overall supply.

The range of potential supply available, excluding the actively maintained land, is summarised in the following graph. The range is based on a +/-10% change in the assumptions for available additional land and burial density to model the best and worst case.

Figure 3 : Range of burials available on additional land



This graph shows that eight cemeteries have at least another 1,000, (and as many as 6,000) burial plots available should all future land be developed. For example Whatawhata Cemetery potentially has between 3,900 and 5,800 burial plots on additional land. A further six cemeteries have several hundred additional burial plots available. The total burial plots across the district on additional land is between 18,000 and 26,000.

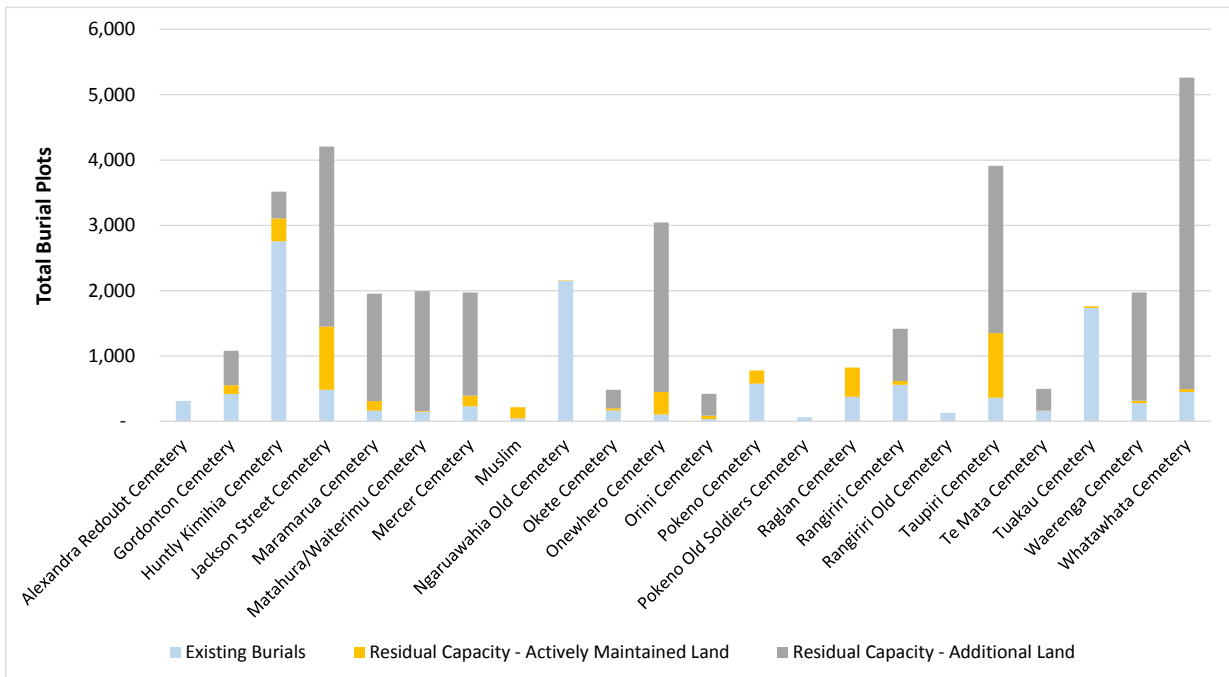
A district wide summary is shown in the following table and a summary of the supply for each cemetery is shown in the graph on the following page. The number of existing burials are also shown for perspective.

Table 1 : District-wide supply summary – base case

	Number of Burial Plots
Existing number of burials on actively maintained land	11,700

Residual supply of actively maintained land	4,200
Residual supply of additional land	18,000 to 26,000
Total	33,900 to 41,900

Figure 4 : Number of existing burials and the number of burials available (base case)



Demand

Historical Background

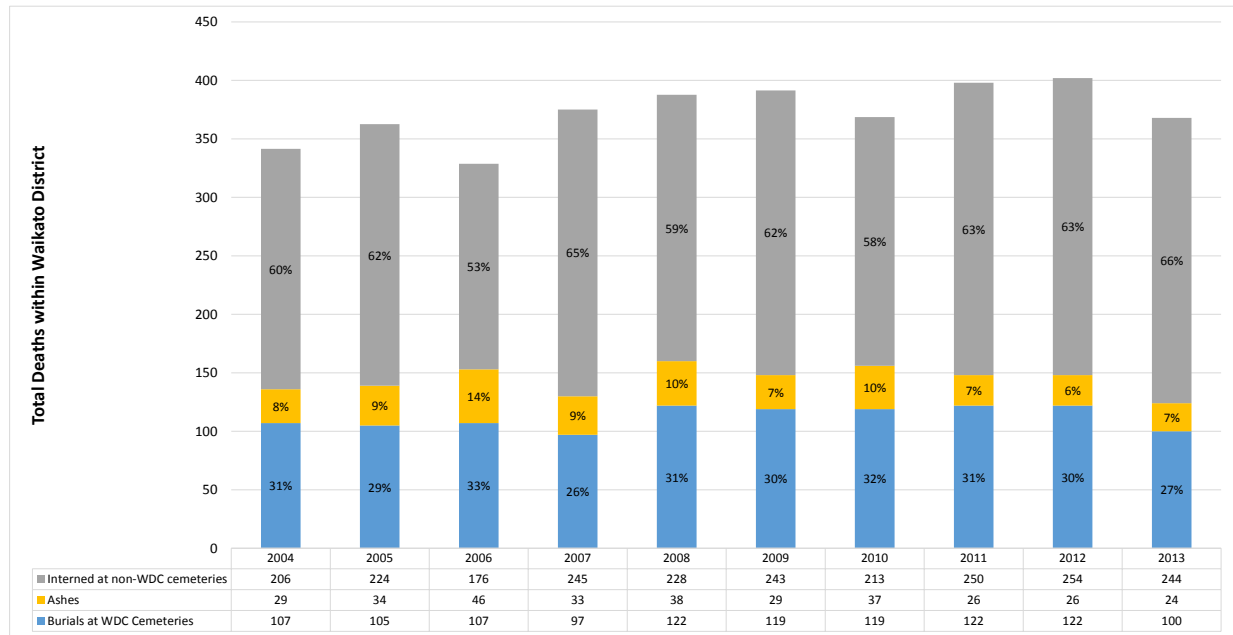
The number of deaths in the Waikato district have increased over the last 15 years from around 350 per year to nearly 400 people per year. This includes the portion of the Franklin District merged into Waikato District to ensure a consistent comparison.

Using WDC data, the deaths over the past decade have been split into burials at WDC cemeteries, ashes interments at WDC cemeteries and burials/cremations at non WDC cemeteries (these include cemeteries outside the district or at private cemeteries). The number of burials at WDC cemeteries ranges from 95 to 125 per year. The following graph shows that the proportion of the Waikato deaths that are buried at WDC cemeteries has ranged from 26% to 33%. This portion also includes the people that pass away elsewhere and are buried at WDC cemeteries.

The largest portion is those that pass away in the Waikato district and are buried or cremated at private, non-council cemeteries or outside the district.

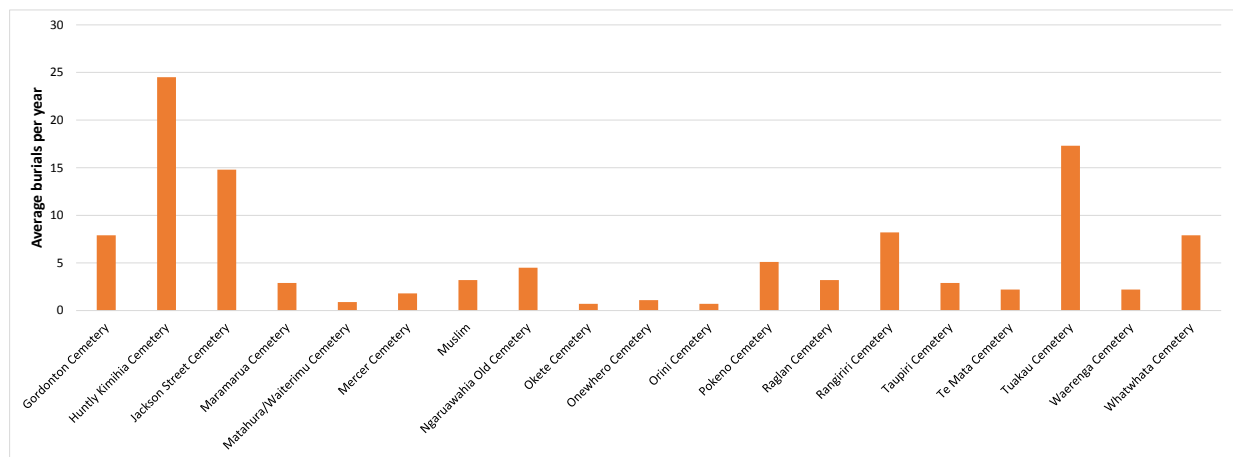
The ashes interments within the district are relatively low, varying from 6% to 14%. As discussed earlier these interments have been excluded from the land area analysis.

Figure 5 : Historic split of Waikato District deaths



The average number of burials at each WDC cemetery over the last 10 years are shown in the following graph. The Huntly Kimihia Cemetery, Jackson Street Cemetery and Tuakau Cemetery have had the highest demand in recent times.

Figure 6: Average burials at Waikato District Council cemeteries - 2004 to 2013



The historical burials at some cemeteries fluctuates over the last 10 years, however the average is an accurate reflection of the annual demand at the cemeteries.

Projected Demand

The projection of demand for burial plots in the Waikato district is based on two assumptions:

1. The projected number of deaths in the district,
2. The ratio of deaths to those that are buried in the WDC cemeteries.

The final step of the demand projections is the allocation of the demand to each cemetery. The assumptions used are explained in the following section.

Projected Deaths

The projected deaths in the Waitako district are based on Statistics New Zealand (SNZ) population projections for the district. These population projections include a low, medium and high series and are informed by a range of birth, death and net migration rates. These are summarised in the following table for each scenario. The district wide projections are provided until 2031. Following this point national projections are used to inform the projections until 2045. The death rate for all three series is projected to increase over time due to population growth and the impact of an ageing population.

Table 2 : Average annual deaths – Waikato District

Scenario	2001 - 2005	2006 - 2010	2011- 2013	2014- 2015	2016- 2020	2021- 2025	2026- 2030	2031- 2035	2036- 2040	2041- 2045
Low	350	370	390	420	440	500	560	620	680	730
Medium				400	440	480	540	595	650	700
High				400	420	460	520	575	630	680

The projected deaths in the district are intrinsically linked to the resident population. The population projections WDC have adopted indicate the district’s population will grow from around 68,000 in 2015 to over 97,000 in 2045. This is an increase of nearly 29,000 people at a growth rate of around 1,000 people per year.

The base case uses the projected death from the SNZ High series as this aligns best with WDC adopted growth projections. This results in a slightly lower number of deaths than under the SNZ Medium and Low series. The worst case scenario uses the SNZ Low series which projects more deaths and therefore places a higher demand on the cemeteries.

Burials at WDC cemeteries

The ratio of the districts deaths to those that are buried at WDC cemeteries is a key assumption in this study. The base case uses the historical average of 0.3 to 1 (30%) of the district deaths. The worst case scenario uses a higher ratio, 0.4 to 1(40%). This ratio is derived from the burials and internments at non-Waikato district cemeteries and cremations. Therefore the ratio also accounts for people that live outside the district who are buried at WDC cemeteries.

Allocation of Demand

The total projected burials within the district are allocated to each cemetery based on the average historical demand. Consideration of the overflow from other cemeteries is also included.

When the actively maintained land in a cemetery is full, and there is additional land available, then this land is assumed to be developed in time to accommodate further burials. In reality this development may be staged over time.

When a cemetery is full and there is no additional land available (or if the developed additional land is also utilised) then the demand is assumed to be accommodated by other cemeteries within the district.

The overflow is allocated by a two-step process.

1. In the first step the overflow is allocated to the remaining cemeteries based on their respective demand, i.e. the more popular cemeteries receive a greater proportion of the overflow.
2. In the second step the remaining cemeteries with the highest residual capacity receives an equivalent portion of the overflow.

The only exception to the allocation of the overflow is the Muslim cemetery. The demand for this cemetery is based solely on the historic average.

Results

Overview

A summary table of the residual capacity of the WDC cemeteries for the base case is shown in the following table. The 2014 figure represents the current residual capacity, namely the number of burial plots available on the actively maintained land. As the future demand is allocated to each cemetery, the residual capacity decreases. The table shows the annual change for the first 10 years, and then at five year periods from 2025 to 2045. The final column shows the residual capacity of the additional land that is not projected to be required in the next 30 years.

The green (light) cell indicates redevelopment of further additional land is required, this is assumed to occur around three years before the cemetery is full. The red (dark) cell indicates the cemeteries that reach the maximum capacity and do not have any additional land to develop and are therefore closed. The cemeteries that are already closed (Alexandra Redoubt, Pokeno Old Soldiers and Rangiriri Old cemeteries) are not shown.

Table 3 : Residual capacity for all cemeteries

Cemetery	2014	2015	2016	2017	2018	2019	2020	2021	2022	2023	2024	2025	2030	2035	2040	2045	Remaining additional land
Gordonton Cemetery	138	130	119	108	97	86	75	63	51	38	26	14	470	390	281	147	0
Huntly Kimihia Cemetery	350	324	291	256	222	187	153	115	77	448	410	372	159	0	0	0	0
Jackson Street Cemetery	970	954	934	914	893	872	851	828	805	783	760	737	608	461	3,012	2,758	0
Maramarua Cemetery	148	145	141	137	133	129	125	120	116	111	107	102	77	1,692	1,637	1,586	0
Matahura/Waiterimu Cemetery	9	8	7	6	4	3	1,837	1,836	1,834	1,833	1,832	1,830	1,822	1,802	1,773	1,756	0
Mercer Cemetery	164	162	160	157	155	152	150	147	144	141	139	136	120	102	77	46	1,577
Muslim	170	167	163	160	156	152	149	145	141	137	133	129	107	82	55	26	0
Ngaruawahia Old Cemetery	5	1	0	0	0	0	0	0	0	0	0	0	0	0	0	0	0
Okete Cemetery	31	30	29	28	27	26	25	24	23	22	21	20	14	294	282	270	0
Onewhero Cemetery	344	343	341	340	338	337	335	333	332	330	328	326	317	304	287	268	2,596
Orini Cemetery	52	51	50	49	48	47	46	45	44	43	42	41	35	28	18	340	0
Pokeno Cemetery	201	196	189	182	175	167	160	152	145	137	129	121	76	27	0	0	0
Raglan Cemetery	450	446	442	437	433	428	424	419	414	409	404	399	371	338	292	237	0
Rangiriri Cemetery	58	49	38	825	814	802	791	778	765	753	740	727	656	572	457	318	0
Taupiri Cemetery	987	984	980	976	972	967	963	959	954	950	945	941	916	882	835	785	2,564
Te Mata Cemetery	5	337	334	331	328	324	321	318	315	311	308	304	285	262	230	193	0
Tuakau Cemetery	24	6	0	0	0	0	0	0	0	0	0	0	0	0	0	0	0
Waerenga Cemetery	36	33	30	27	24	21	18	14	11	8	1,661	1,657	1,638	1,606	1,562	1,523	0

Whatawhata Cemetery	47	39	28	4,784	4,773	4,762	4,750	4,738	4,726	4,714	4,702	4,689	4,621	4,515	4,366	4,227	0
WDC	4,189	4,403	4,277	9,716	9,590	9,464	11,173	11,035	10,896	11,167	12,685	12,546	12,290	13,356	15,164	14,479	6,737

Key Findings

The key findings are summarised below.

The Ngaruawahia Old Cemetery and the Tuakau Cemetery are projected to reach their total capacity within the next two years. The Pokeno Cemetery is projected to reach the total capacity around 2040. The total capacity reflects the fact that there is no additional land to be developed at these cemeteries.

The following cemeteries are projected to require additional land to be developed in the next five years:

- 2015 Te Mata Cemetery.
- 2017 Rangiriri Cemetery.
- 2017 Whatawhata Cemetery.

The following cemeteries are projected to require additional land to be developed in five to ten years' time:

- 2020 Matahura/Waiterimu Cemetery. It should be noted this cemetery only has an existing residual capacity of nine burials. Although the historic demand has been low there is potential for this capacity to be used up before 2020.
- 2023 Huntly Kimihia Cemetery (Despite additional land being developed, this cemetery is projected to reach its total capacity around 2035).
- 2024 Waerenga Cemetery.

The following cemeteries are projected to require additional land to be developed in between 2025 and 2045:

- 2027 Gordonton Cemetery.
- 2035 Maramarua Cemetery.
- 2035 Okete Cemetery.
- 2040 Jackson Street Cemetery.
- 2045 Orini Cemetery.

The Mercer, Muslim, Onewhero, Raglan and Taupiri cemeteries are all projected to have sufficient residual capacity for the next 30 years.

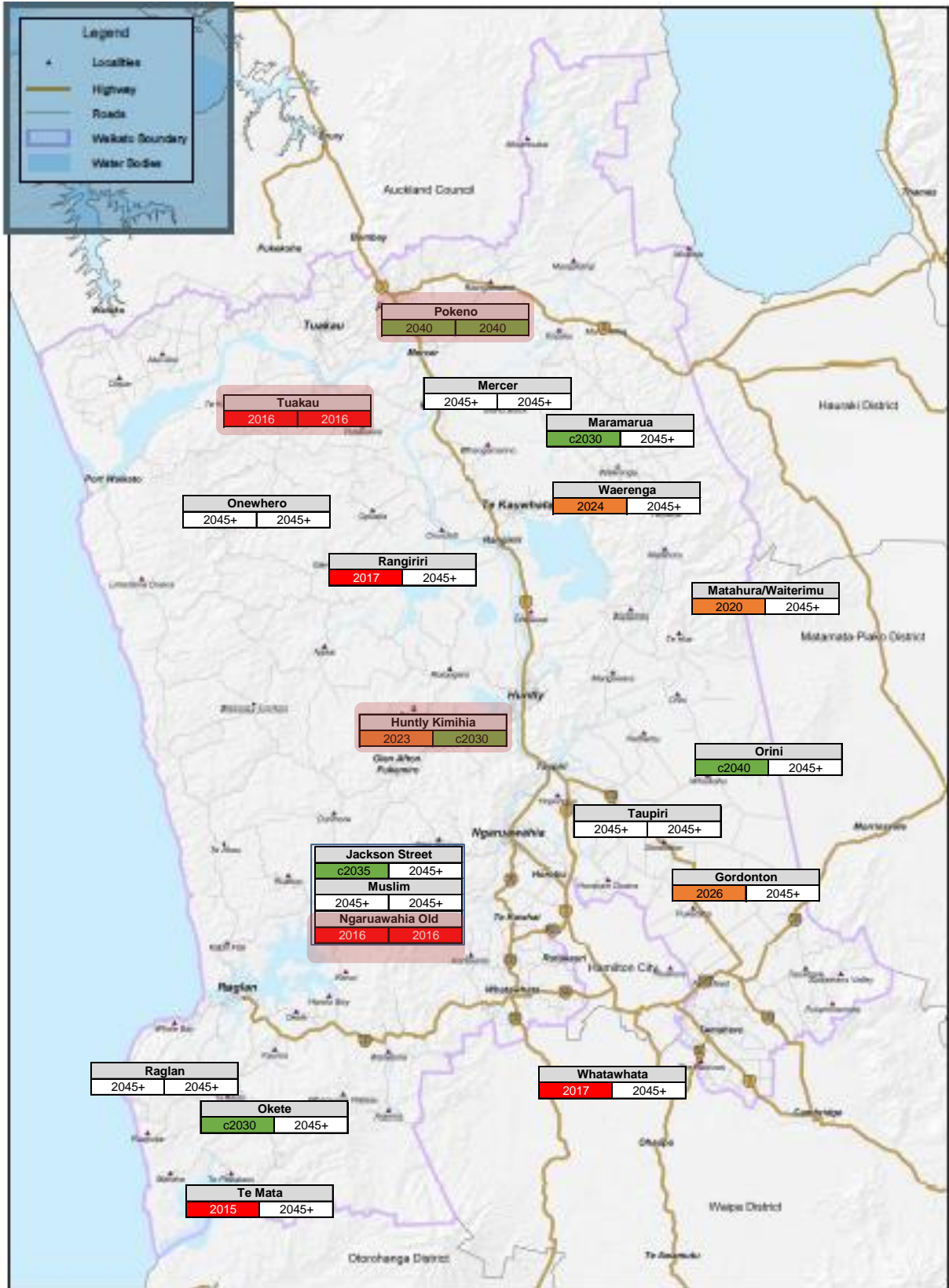
At the end of the 30 year study period there are still nearly 21,200 burial plots available in the WDC cemeteries. The map on the following page provides a visual overview of the districts cemeteries. This shows that most parts of the district have surplus capacity.

The potential exception is the northern part of the district which is the most constrained. Both Tuakau and Pokeno cemeteries are forecast to be closed within the 30 year study period. This constraint is offset by the fact that Maramarua, Mercer and Waerenga cemeteries all have a large residual capacity of over 1,500 burial plots.

The appendix includes a detailed overview of the key findings for each cemetery.

Cemetery Name	
Date that actively maintained land is fully utilised.	Date that the total potential capacity is fully utilised.

0 to 5 years
5 to 15 years
16 to 30 years
Over 30 years



Appendix

This appendix provides the following information about each WDC cemetery:

- A brief synopsis of the findings, including both the base and worst case scenario.
- A summary supply and demand graph showing both historical figures and future projections under the base case (solid line) and the worst case (dashed line).
- A summary table showing the key outputs.

Gordonton Cemetery

The Gordonton Cemetery currently has 416 burials. In the base case the burials per year are projected to increase over the next 30 years from around 10 to nearly 30 burials per year. There is residual capacity on the actively maintained land for a further 140 burials. There is also additional land that can be developed to provide a further 525 burial plots.

The base case scenario projects that redevelopment of Gordonton Cemetery will be required around 2027. This would provide sufficient capacity to meet demand until at least 2045 when the residual capacity would be around 150 burial plots.

Under the worst case scenario the redevelopment of additional land would need to be brought forward six years to 2021. The final closure of the cemetery would be within the 30 year study period, between 2035 and 2040.

Figure 7 : Gordonton Cemetery - Summary graph

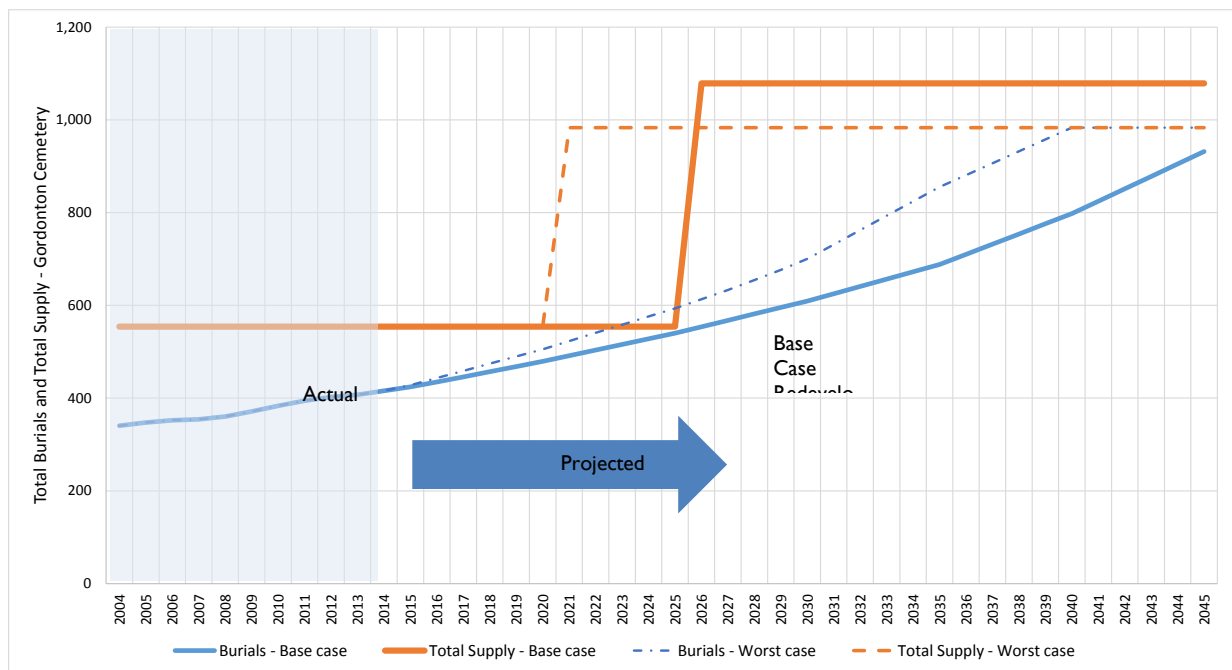


Table 4 : Gordonton Cemetery - Summary table

Supply - Base Case		Burials	Demand - Base Case		Burials
Burials on remaining actively maintained land		138	Existing number of burials (2014)		416
Additional land for burial plots		525	Historical average burials per year (2004 to 2014)		8
Total available residual supply as at 2014		663	Projected burials (2015 to 2045)		516
Total Supply (Residual + existing burials)		1,079	Total burials at 2045		932
CAPACITY DATE		Actively Maintained land	All available land	Residual Capacity at 2045	
Base case		2027	2045+	147	
Worst case		2021	2040	0	

Huntly Kimihia Cemetery

The Huntly Kimihia Cemetery currently has over 2,750 burials. In the base case the burials per year are projected to increase over the next 15 years from around 25 to over 40 burials per year. There is residual capacity on the actively maintained land for a further 350 burials. There is also additional land that can be developed to provide a further 400 burial plots.

The base case scenario projects that redevelopment of Huntly Kimihia Cemetery will be required around 2023. This would provide sufficient capacity to meet demand until around 2035, at which time the cemetery would be full.

Under the worst case scenario the redevelopment of additional land would need to be brought forward four years to 2019. The final closure would also be brought forward eight years to 2027.

Figure 8 : Huntly Kimihia Cemetery - Summary graph

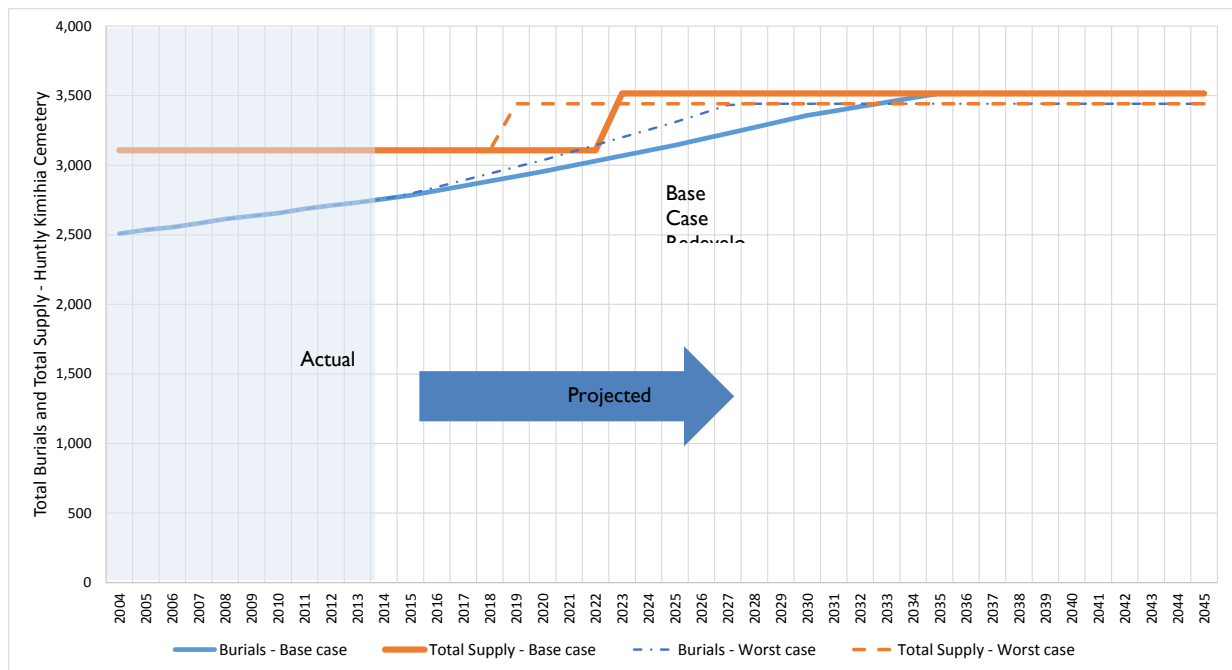


Table 5 : Huntly Kimihia Cemetery - Summary table

Supply - Base Case		Burials	Demand - Base Case		Burials
Burials on remaining actively maintained land		350	Existing number of burials (2014)		2,758
Burials on additional land		408	Historical average burials per year (2004 to 2014)		25
Total available residual supply as at 2014		758	Projected burials (2015 to 2045)		758
Total Supply (Residual + existing burials)		3,516	Total burials at 2045		3,516
CAPACITY DATE		Actively Maintained land	All available land	Residual Capacity at 2045	
Base case		2023	2035	0	
Worst case		2019	2027	0	

Jackson Street Cemetery

The Jackson Street Cemetery currently has over 480 burials. In the base case the burials per year are projected to increase over the next 30 years from around 15 to over 50 burials per year. There is residual capacity on the actively maintained land for a further 970 burials. There is also additional land that can be developed to provide a further 2,750 burial plots.

The base case scenario projects that redevelopment of Jackson Street Cemetery will be required around 2040. This would provide sufficient capacity to meet demand until at least 2045 when the residual capacity is projected to be nearly 2,760 burial plots.

Under the worst case scenario the redevelopment of additional land would need to be brought forward five years to 2035 and the 2045 residual capacity would be around 1,620 burial plots.

Figure 9 : Jackson Street Cemetery - Summary graph

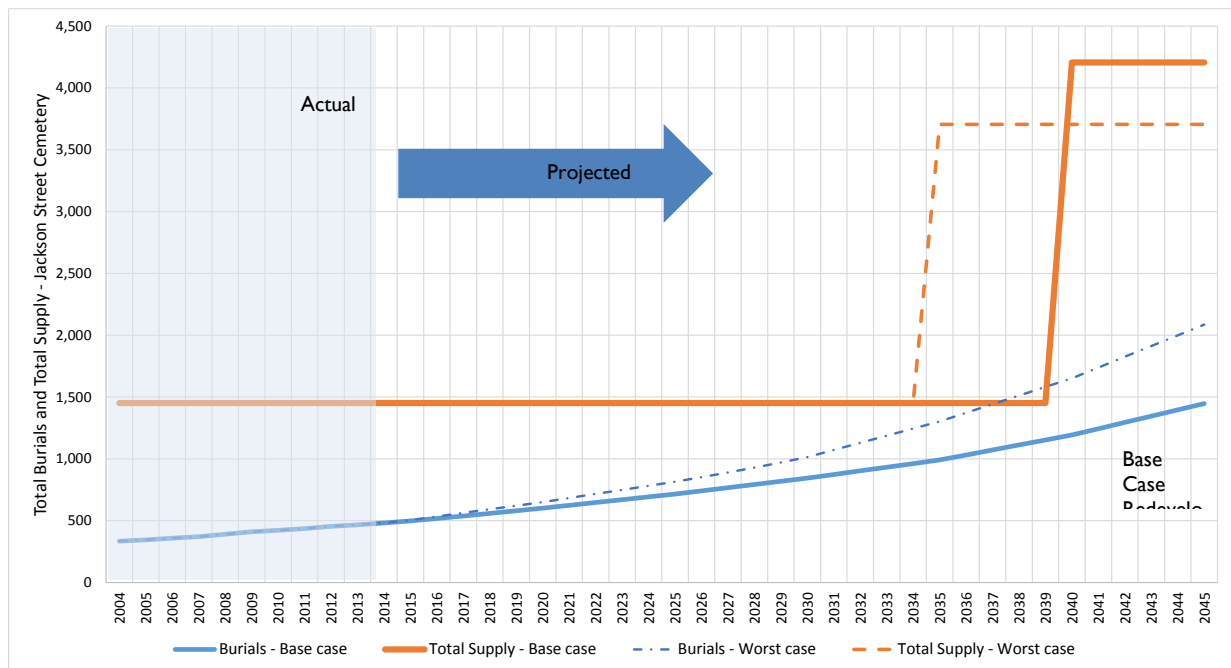


Table 6 : Jackson Street Cemetery - Summary table

Supply - Base Case		Burials	Demand - Base Case		Burials
Burials on remaining actively maintained land		970	Existing number of burials (2014)		482
Burials on additional land		2,753	Historical average burials per year (2004 to 2014)		15
Total available residual supply as at 2014		3,723	Projected burials (2015 to 2045)		965
Total Supply (Residual + existing burials)		4,205	Total burials at 2045		1,447
CAPACITY DATE		Actively Maintained land	All available land	Residual Capacity at 2045	
Base case		2040	2045+	2,758	
Worst case		2035	2045+	1,619	

Maramarua Cemetery

The Maramarua Cemetery currently has over 160 burials. In the base case the burials per year are projected to increase over the next 30 years from around 3 to over 10 burials per year. There is residual capacity on the actively maintained land for a further 150 burials. There is also additional land that can be developed to provide a further 1,640 burial plots.

The base case scenario projects that redevelopment of Maramarua Cemetery will be required around 2035. This would provide sufficient capacity to meet demand until at least 2045 when the residual capacity is projected to be nearly 1,600 burial plots.

Under the worst case scenario the redevelopment of additional land would occur at the same time, however the 2045 residual capacity would be under 1,200 burial plots.

Figure 10 : Maramarua Cemetery - Summary graph

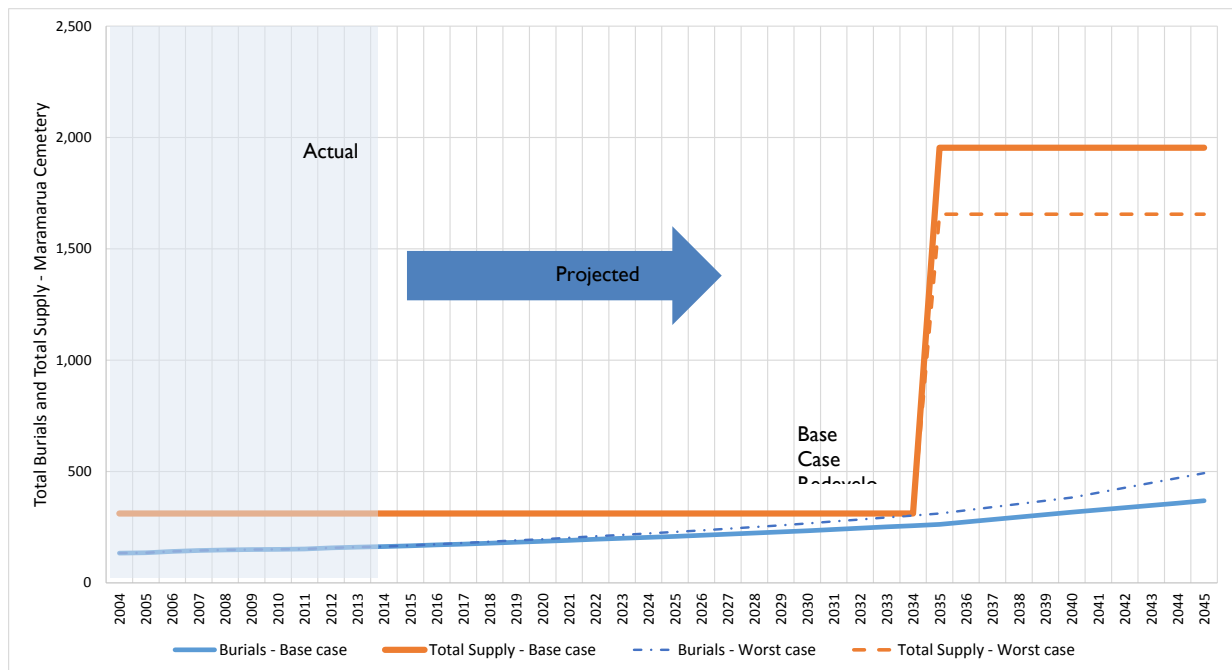


Table 7 : Maramarua Cemetery - Summary table

Supply - Base Case		Burials	Demand - Base Case		Burials
Burials on remaining actively maintained land		148	Existing number of burials (2014)		163
Burials on additional land		1,643	Historical average burials per year (2004 to 2014)		3
Total available residual supply as at 2014		1,791	Projected burials (2015 to 2045)		205
Total Supply (Residual + existing burials)		1,954	Total burials at 2045		368
CAPACITY DATE		Actively Maintained land	All available land	Residual Capacity at 2045	
Base case		2035	2045+	1,586	
Worst case		2035	2045+	1,163	

Matahura/Waiterimu Cemetery

The Matahura/Waiterimu Cemetery currently has nearly 150 burials. In the base case the burials per year are projected to increase over the next 30 years from around one to over five burials per year. There is residual capacity on the actively maintained land for a further nine burials. There is also additional land that can be developed to provide a further 1,835 burial plots.

The base case scenario projects that redevelopment of Matahura/Waiterimu Cemetery will be required around 2020. This would provide sufficient capacity to meet demand until at least 2045 when the residual capacity would be around 1,750 burial plots.

Under the worst case scenario the redevelopment of additional land would need to be brought forward three years to 2017 and the 2045 residual capacity would be around 1,335 burial plots.

Figure 11 : Matahura/Waiterimu Cemetery - Summary graph

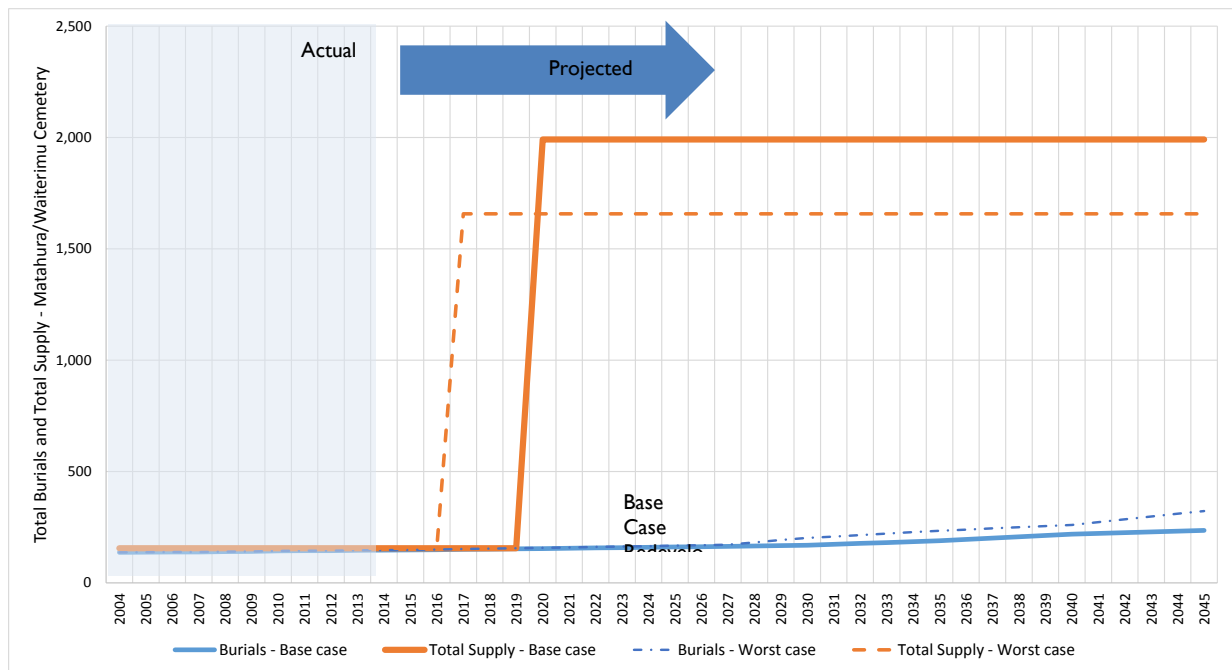


Table 8 : Matahura/Waiterimu Cemetery - Summary table

Supply - Base Case		Burials	Demand - Base Case		Burials
Burials on remaining actively maintained land		9	Existing number of burials (2014)		147
Burials on additional land		1,835	Historical average burials per year (2004 to 2014)		1
Total available residual supply as at 2014		1,844	Projected burials (2015 to 2045)		89
Total Supply (Residual + existing burials)		1,991	Total burials at 2045		235
CAPACITY DATE		Actively Maintained land	All available land	Residual Capacity at 2045	
Base case		2020	2045+	1,756	
Worst case		2017	2045+	1,335	

Mercer Cemetery

The Mercer Cemetery currently has nearly 230 burials. In the base case the burials per year are projected to increase over the next 30 years from around two to over six burials per year. There is residual capacity on the actively maintained land for a further 164 burials. There is also additional land that can be developed to provide a further 1,577 burial plots.

The base case scenario projects that redevelopment of Mercer Cemetery will not be required before 2045. However the residual capacity of the actively maintained land at this time will be only 46 burial lots, with the capacity of the additional land (1,580 burials plots) also still available.

Under the worst case scenario the redevelopment of additional land would be needed around 2035 and the 2045 residual capacity would be around 1,220 burial plots.

Figure 12 : Mercer Cemetery - Summary graph

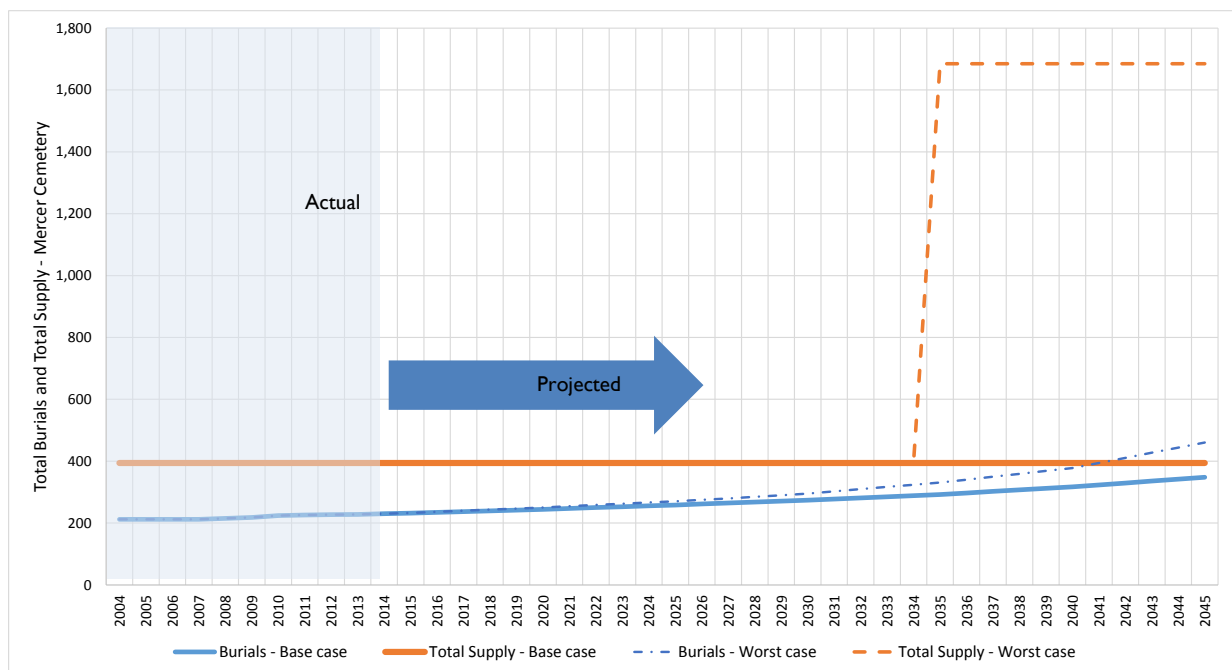


Table 9 : Mercer Cemetery - Summary table

Supply - Base Case		Burials	Demand - Base Case		Burials
Burials on remaining actively maintained land		164	Existing number of burials (2014)		230
Burials on additional land		1,577	Historical average burials per year (2004 to 2014)		2
Total available residual supply as at 2014		1,741	Projected burials (2015 to 2045)		118
Total Supply (Residual + existing burials)		1,971	Total burials at 2045		348
CAPACITY DATE		Actively Maintained land	All available land	Residual Capacity at 2045	
Base case		2045+	2045+	1,623	
Worst case		2035	2045+	1,224	

Muslim Cemetery

The Muslim Cemetery currently has nearly 50 burials. In the base case the burials per year are projected to increase over the next 30 years from around three to nearly six burials per year. There is residual capacity on the actively maintained land for a further 170 burials. There is no additional land available.

The base case scenario projects that Muslim Cemetery will not reach capacity before 2045. The residual capacity at this time will be around 26 burial lots.

Under the worst case scenario the Muslim Cemetery would reach capacity around 2045.

Figure 13 : Muslim Cemetery - Summary graph

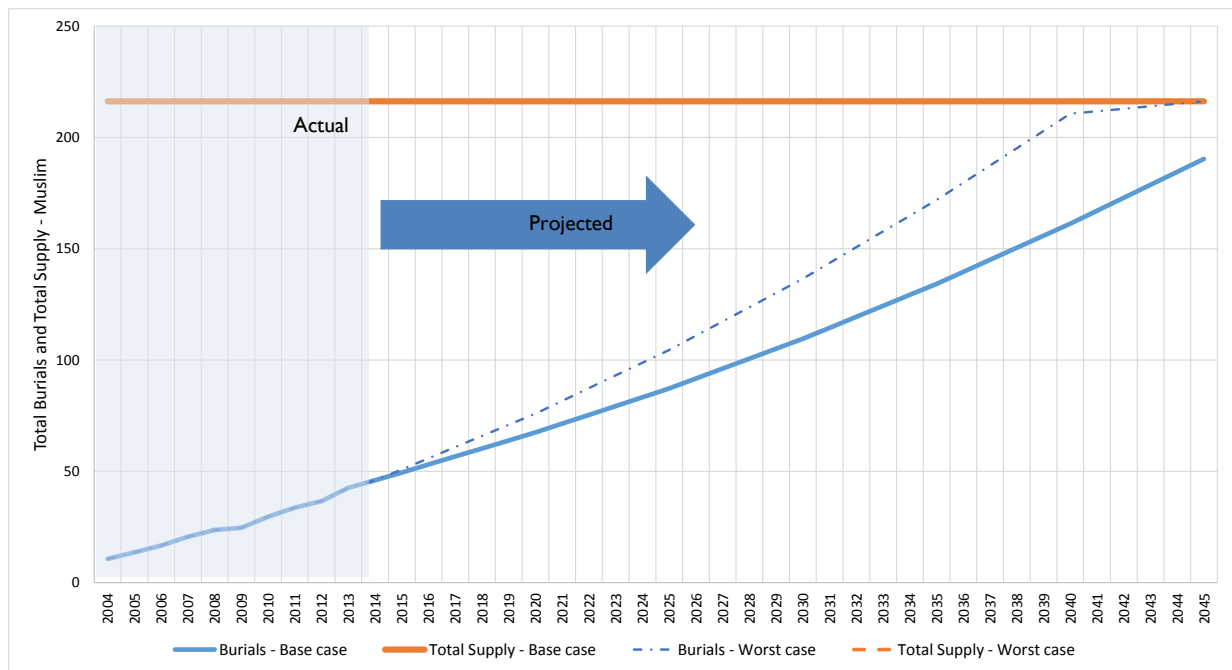


Table 10 : Muslim Cemetery - Summary table

Supply - Base Case		Burials	Demand - Base Case		Burials
Burials on remaining actively maintained land		170	Existing number of burials (2014)		46
Burials on additional land		0	Historical average burials per year (2004 to 2014)		3
Total available residual supply as at 2014		170	Projected burials (2015 to 2045)		144
Total Supply (Residual + existing burials)		216	Total burials at 2045		190
CAPACITY DATE			Actively Maintained land	All available land	Residual Capacity at 2045
Base case			2045+	2045+	26
Worst case			2045	2045	0

Ngaruawahia Old Cemetery

The Ngaruawahia Old Cemetery currently has nearly 2,150 burials. There is only a small residual capacity on the actively maintained land, around five burials. There is no additional land that can be developed therefore the Ngaruawahia Old Cemetery is projected to be full within two years.

Figure 14 : Ngaruawahia Old Cemetery - Summary graph

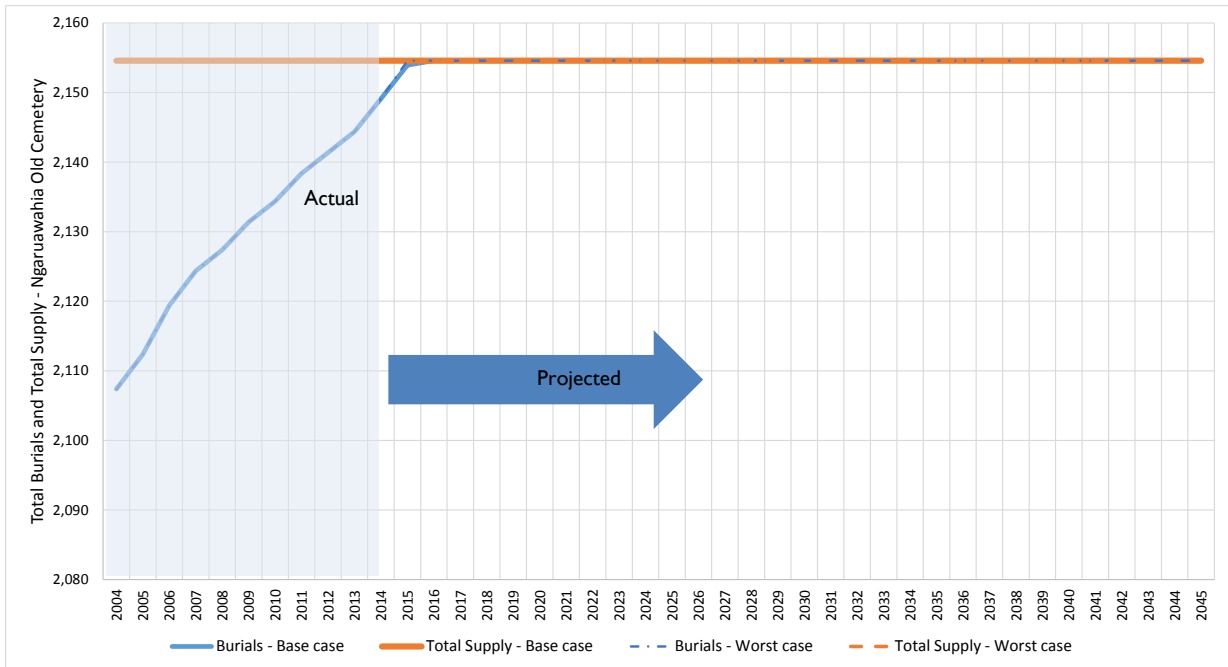


Table 11 : Ngaruawahia Old Cemetery - Summary table

Supply - Base Case		Burials	Demand - Base Case		Burials
Burials on remaining actively maintained land		5	Existing number of burials (2014)		2,149
Burials on additional land		0	Historical average burials per year (2004 to 2014)		5
Total available residual supply as at 2014		5	Projected burials (2015 to 2045)		5
Total Supply (Residual + existing burials)		2,155	Total burials at 2045		2,155
CAPACITY DATE		Actively Maintained land	All available land	Residual Capacity at 2045	
Base case		2016	2016	0	
Worst case		2015	2015	0	

Okete Cemetery

The Okete Cemetery currently has over 160 burials. In the base case the burials per year are projected to increase over the next 30 years from around one to over two burials per year. There is residual capacity on the actively maintained land for a further 31 burials. There is also additional land that can be developed to provide a further 287 burial plots.

The base case scenario projects that redevelopment of Okete Cemetery will be required around 2035. This would provide sufficient capacity to meet demand until at least 2045 when the residual capacity would be around 270 burial plots.

Under the worst case scenario the redevelopment of additional land would still be 2035, however the 2045 residual capacity would be less than 200 burial plots.

Figure 15 : Okete Cemetery - Summary graph

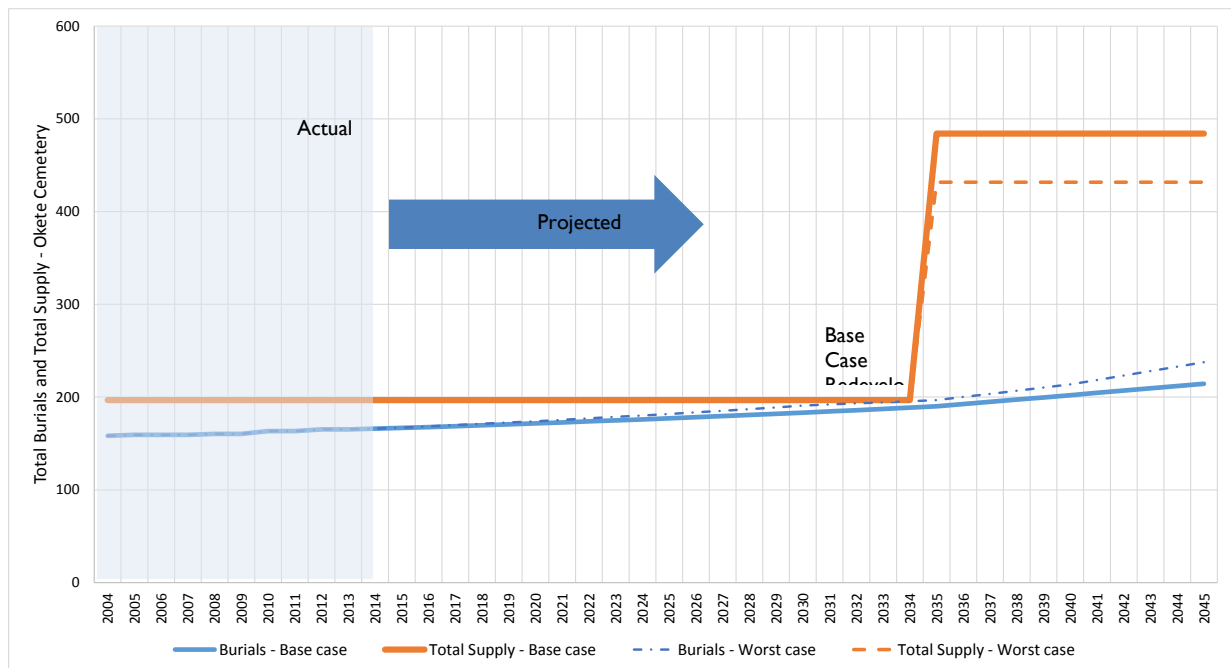


Table 12 : Okete Cemetery - Summary table

Supply - Base Case		Burials	Demand - Base Case		Burials
Burials on remaining actively maintained land		31	Existing number of burials (2014)		166
Burials on additional land		287	Historical average burials per year (2004 to 2014)		1
Total available residual supply as at 2014		318	Projected burials (2015 to 2045)		48
Total Supply (Residual + existing burials)		484	Total burials at 2045		214
CAPACITY DATE		Actively Maintained land	All available land	Residual Capacity at 2045	
Base case		2035	2045+	270	
Worst case		2035	2045+	194	

Onewhero Cemetery

The Onewhero Cemetery currently has over 100 burials. In the base case the burials per year are projected to increase over the next 30 years from around one to nearly four burials per year. There is residual capacity on the actively maintained land for a further 344 burials. There is also additional land that can be developed to provide a further 2,600 burial plots.

The base case scenario projects that redevelopment of Onewhero Cemetery will not be required before 2045. The residual capacity of the actively maintained land at this time will be nearly 270 burial lots, with the capacity of the additional land (2,600 burials plots) also still available.

The worst case scenario is much the same as the base case, with capacity projected to be available well past 2045.

Figure 16 : Onewhero Cemetery - Summary graph

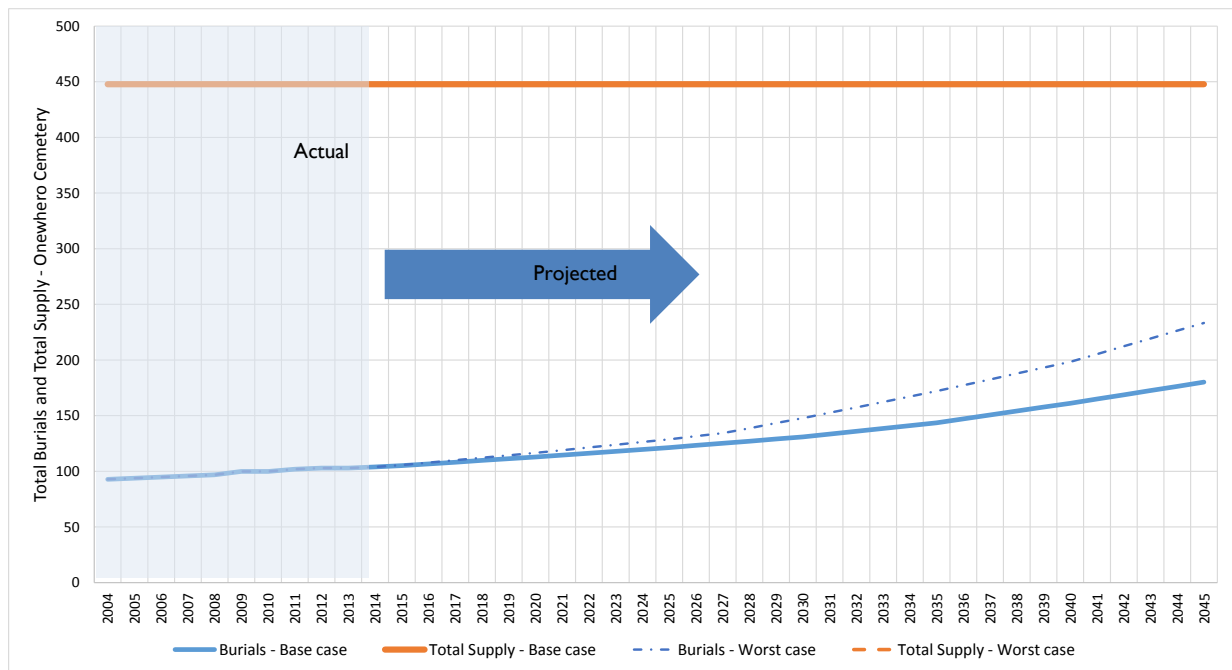


Table 13 : Onewhero Cemetery - Summary table

Supply - Base Case		Burials	Demand - Base Case		Burials
Burials on remaining actively maintained land		344	Existing number of burials (2014)		104
Burials on additional land		2,596	Historical average burials per year (2004 to 2014)		1
Total available residual supply as at 2014		2,939	Projected burials (2015 to 2045)		76
Total Supply (Residual + existing burials)		3,043	Total burials at 2045		180
CAPACITY DATE		Actively Maintained land	All available land	Residual Capacity at 2045	
Base case		2045+	2045+	2,864	
Worst case		2045+	2045+	2,338	

Orini Cemetery

The Orini Cemetery currently has nearly 40 burials. In the base case the burials per year are projected to increase over the next 30 years from around one to over two burials per year. There is residual capacity on the actively maintained land for a further 52 burials. There is also additional land that can be developed to provide a further 334 burial plots.

The base case scenario projects that redevelopment of Orini Cemetery will be required around 2045. This would increase the residual capacity to around 340 burial plots.

Under the worst case scenario the redevelopment of additional land would need to be brought forward ten years to 2035 and the 2045 residual capacity would be reduced to less than 245 burial plots.

Figure 17 : Orini Cemetery - Summary graph

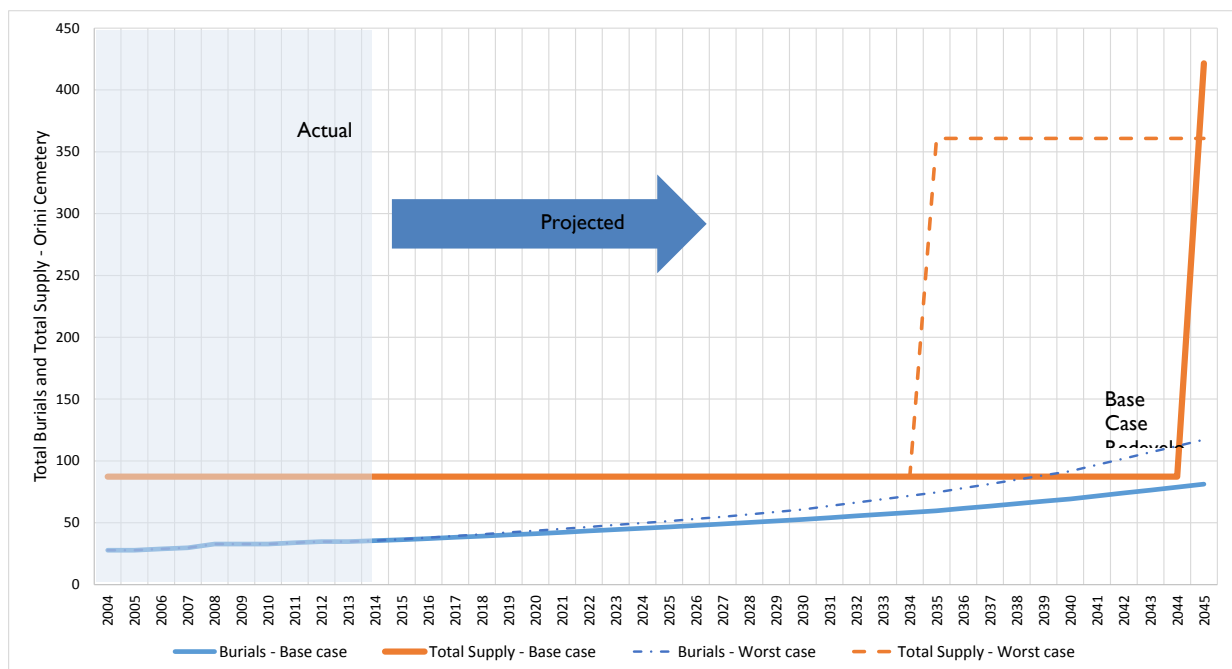


Table 14 : Orini Cemetery - Summary table

Supply - Base Case		Burials	Demand - Base Case		Burials
Burials on remaining actively maintained land		52	Existing number of burials (2014)		36
Burials on additional land		334	Historical average burials per year (2004 to 2014)		1
Total available residual supply as at 2014		386	Projected burials (2015 to 2045)		46
Total Supply (Residual + existing burials)		422	Total burials at 2045		81
CAPACITY DATE		Actively Maintained land	All available land	Residual Capacity at 2045	
Base case		2045	2045+	340	
Worst case		2035	2045+	244	

Pokeno Cemetery

The Pokeno Cemetery currently has nearly 580 burials. In the base case the burials per year are projected to increase over the next 25 years from around five to around ten burials per year. There is residual capacity on the actively maintained land for a further 200 burials. There is no additional land available.

The base case scenario projects that Pokeno Cemetery will reach the total capacity around 2040. Under the worst case scenario the closure is projected to be brought forward five years to around 2035.

Figure 18 : Pokeno Cemetery - Summary graph

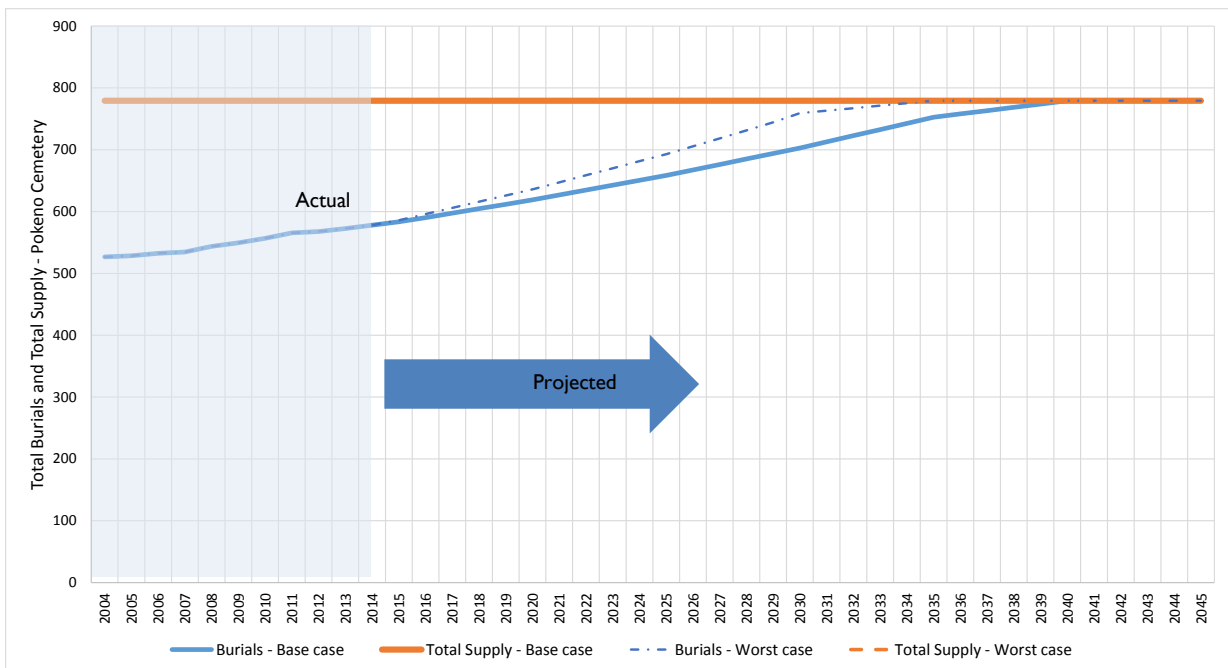


Table 15 : Pokeno Cemetery - Summary table

Supply - Base Case		Demand - Base Case	
	Burials		Burials
Burials on remaining actively maintained land	201	Existing number of burials (2014)	578
Burials on additional land	0	Historical average burials per year (2004 to 2014)	5
Total available residual supply as at 2014	201	Projected burials (2015 to 2045)	201
Total Supply (Residual + existing burials)	779	Total burials at 2045	779
CAPACITY DATE		Actively Maintained land	Residual Capacity at 2045
		All available land	
Base case		2040	2040
Worst case		2035	2035

Raglan Cemetery

The Raglan Cemetery currently has around 375 burials. In the base case the burials per year are projected to increase over the next 30 years from around three to over ten burials per year. There is residual capacity on the actively maintained land for a further 450 burials. There is no additional land available.

The base case scenario projects that Raglan Cemetery will not reach capacity before 2045. The residual capacity at this time will be nearly 240 burial lots.

Under the worst case scenario the Raglan Cemetery will not reach capacity before 2045. The 2045 residual capacity under this scenario is projected to be reduced to around 100 burial lots.

Figure 19 : Raglan Cemetery - Summary graph

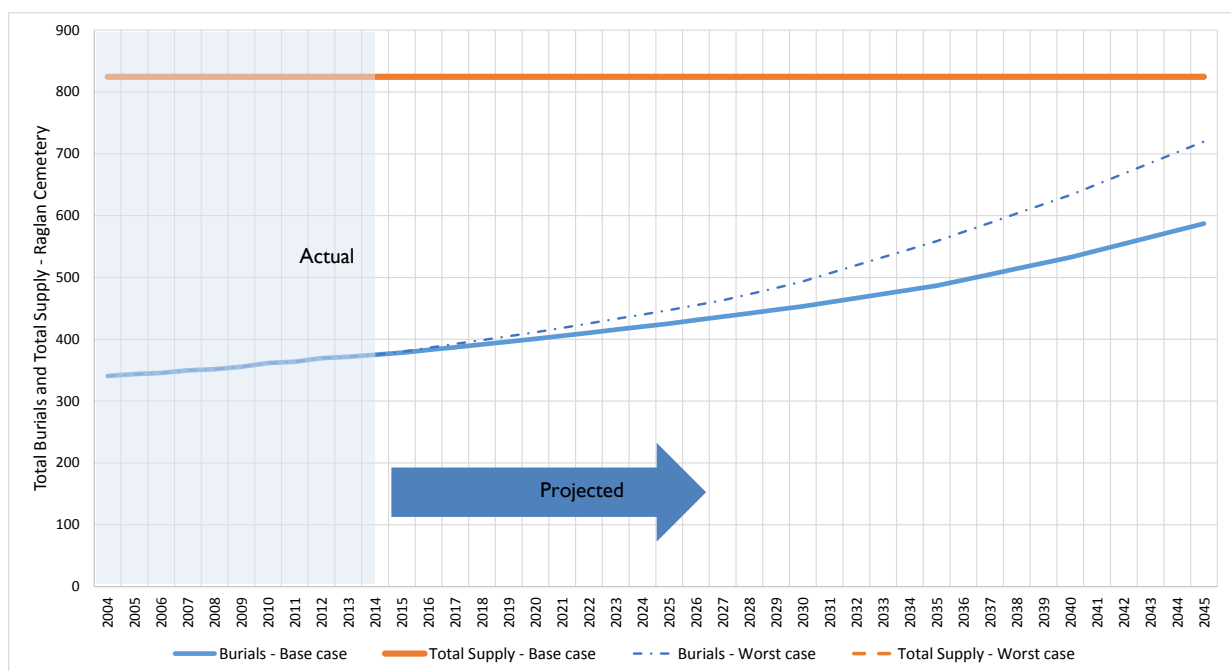


Table 16 : Raglan Cemetery - Summary table

Supply - Base Case		Burials	Demand - Base Case		Burials
Burials on remaining actively maintained land		450	Existing number of burials (2014)		375
Burials on additional land		0	Historical average burials per year (2004 to 2014)		3
Total available residual supply as at 2014		450	Projected burials (2015 to 2045)		212
Total Supply (Residual + existing burials)		825	Total burials at 2045		587
CAPACITY DATE		Actively Maintained land	All available land	Residual Capacity at 2045	
Base case		2045+	2045+	237	
Worst case		2045+	2045+	105	

Rangiriri Cemetery

The Rangiriri Cemetery currently has around 560 burials. In the base case the burials per year are projected to increase over the next 30 years from around eight to over 25 burials per year. There is residual capacity on the actively maintained land for a further 58 burials. There is also additional land that can be developed to provide a further 800 burial plots.

The base case scenario projects that redevelopment of Rangiriri Cemetery will be required around 2017. This would provide sufficient capacity to meet demand until at least 2045 when the residual capacity would be nearly 320 burial plots.

Under the worst case scenario the redevelopment of additional land would need to be brought forward one year 2016 and the Rangiriri Cemetery would reach total capacity around 2045.

Figure 20 : Rangiriri Cemetery - Summary graph

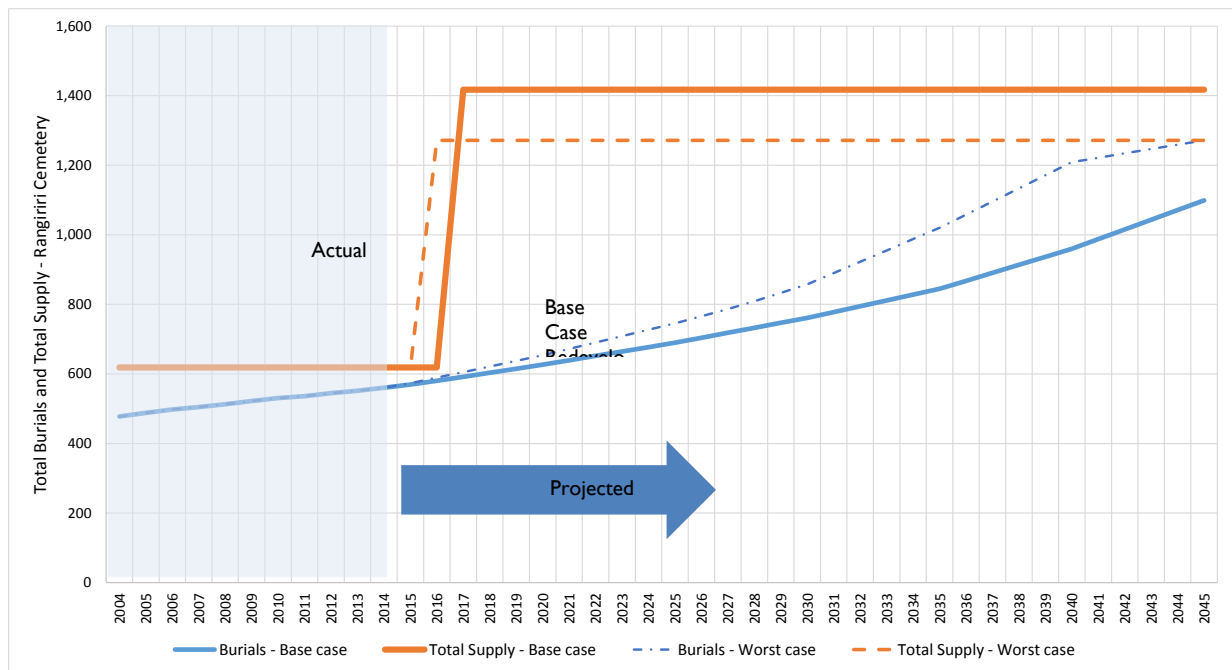


Table 17 : Rangiriri Cemetery - Summary table

Supply - Base Case		Burials	Demand - Base Case		Burials
Burials on remaining actively maintained land		58	Existing number of burials (2014)		560
Burials on additional land		799	Historical average burials per year (2004 to 2014)		8
Total available residual supply as at 2014		857	Projected burials (2015 to 2045)		539
Total Supply (Residual + existing burials)		1,417	Total burials at 2045		1,099
CAPACITY DATE		Actively Maintained land	All available land	Residual Capacity at 2045	
Base case		2017	2045+	318	
Worst case		2016	2045	0	

Taupiri Cemetery

The Taupiri Cemetery currently has over 360 burials. In the base case the burials per year are projected to increase over the next 30 years from around three to nearly ten burials per year. There is residual capacity on the actively maintained land for a further 987 burials. There is also additional land that can be developed to provide a further 2,564 burial plots.

The base case scenario projects that redevelopment of Taupiri Cemetery will not be required before 2045. The residual capacity of the actively maintained land at this time will be over 780 burial lots, with the capacity of the additional land (2,564 burials plots) also still available.

The worst case scenario is much the same as the base case, with capacity projected to be available well past 2045.

Figure 21 : Taupiri Cemetery - Summary graph

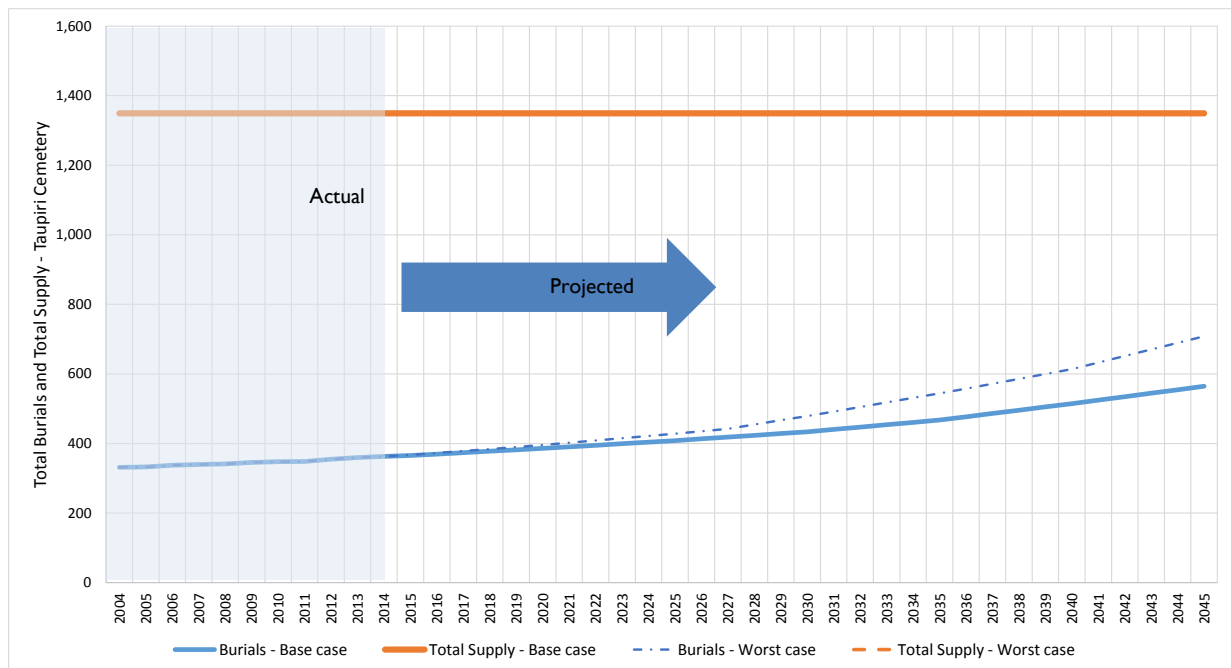


Table 18 : Taupiri Cemetery - Summary table

Supply - Base Case		Burials	Demand - Base Case		Burials
Burials on remaining actively maintained land		987	Existing number of burials (2014)		363
Burials on additional land		2,564	Historical average burials per year (2004 to 2014)		3
Total available residual supply as at 2014		3,551	Projected burials (2015 to 2045)		202
Total Supply (Residual + existing burials)		3,913	Total burials at 2045		565
CAPACITY DATE		Actively Maintained land	All available land	Residual Capacity at 2045	
Base case		2045+	2045+	3,349	
Worst case		2045+	2045+	2,739	

Te Mata Cemetery

The Te Mata Cemetery currently has nearly 160 burials. In the base case the burials per year are projected to increase over the next 30 years from around two to over eight burials per year. There is residual capacity on the actively maintained land for only a further five burials. There is also additional land that can be developed to provide a further 334 burial plots.

The base case scenario projects that redevelopment of Te Mata Cemetery will be required within a year, by 2015. This would provide sufficient capacity to meet demand until at least 2045 when the residual capacity would be over 190 burial plots.

Under the worst case scenario the redevelopment of additional land would still be within the next year and the 2045 residual capacity would be reduced to around 40 burial plots.

Figure 22 : Te Mata Cemetery - Summary graph

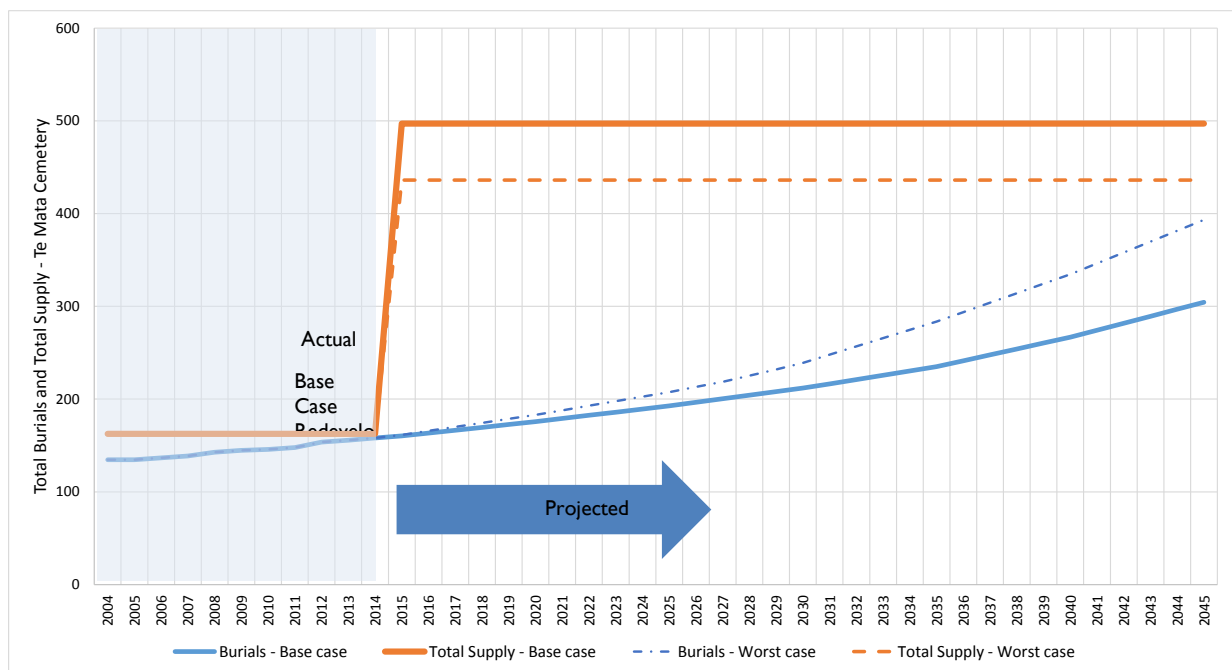


Table 19 : Te Mata Cemetery - Summary table

Supply - Base Case		Burials	Demand - Base Case		Burials
Burials on remaining actively maintained land		5	Existing number of burials (2014)		158
Burials on additional land		334	Historical average burials per year (2004 to 2014)		2
Total available residual supply as at 2014		339	Projected burials (2015 to 2045)		146
Total Supply (Residual + existing burials)		497	Total burials at 2045		304
CAPACITY DATE		Actively Maintained land	All available land	Residual Capacity at 2045	
Base case		2015	2045+	193	
Worst case		2015	2045+	43	

Tuakau Cemetery

The Tuakau Cemetery currently has 1,735 burials. The historical demand has been, on average, 17 burials per year. There is residual capacity on the actively maintained land for only a further 24 burials. There is no additional land available.

The base case scenario projects that Tuakau Cemetery will reach the total capacity within the next two years. Under the worst case scenario the closure is projected to be brought forward a year to around 2016.

Figure 23 : Tuakau Cemetery - Summary graph

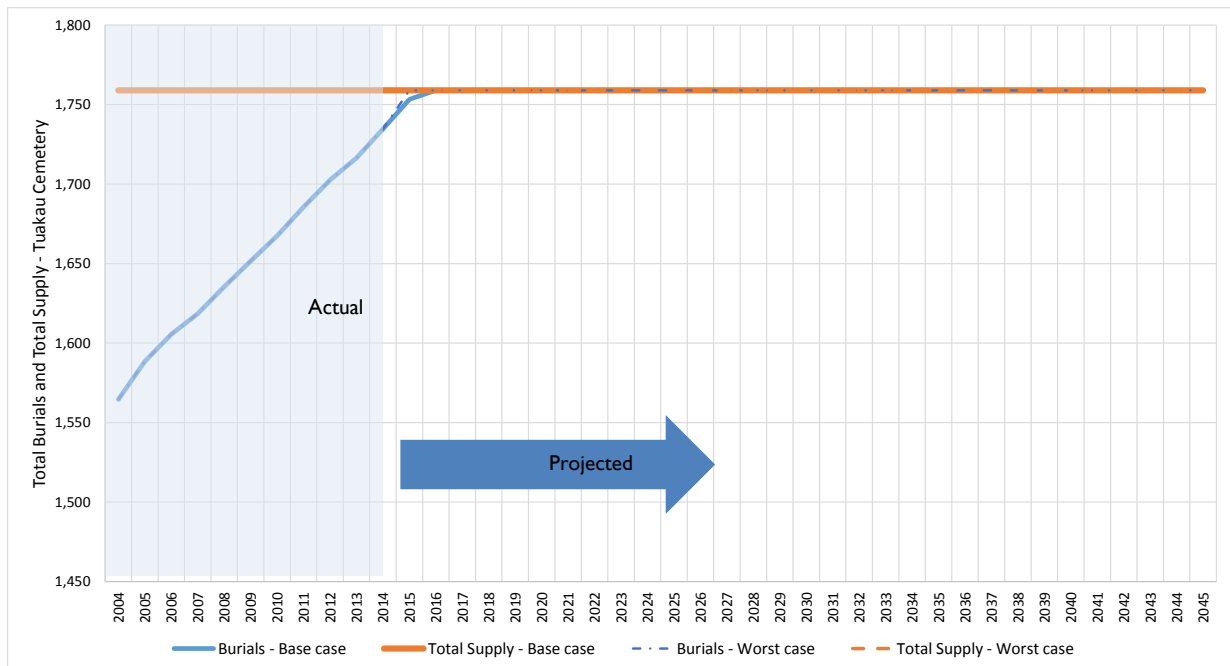


Table 20 : Tuakau Cemetery - Summary table

Supply - Base Case		Burials	Demand - Base Case		Burials
Burials on remaining actively maintained land		24	Existing number of burials (2014)		1,735
Burials on additional land		0	Historical average burials per year (2004 to 2014)		17
Total available residual supply as at 2014		24	Projected burials (2015 to 2045)		24
Total Supply (Residual + existing burials)		1,759	Total burials at 2045		1,759
CAPACITY DATE			Actively Maintained land	All available land	Residual Capacity at 2045
Base case			2016	2016	0
Worst case			2015	2015	0

Waerenga Cemetery

The Waerenga Cemetery currently has nearly 280 burials. In the base case the burials per year are projected to increase over the next 30 years from around two to nearly nine burials per year. There is residual capacity on the actively maintained land for a further 36 burials. There is also additional land that can be developed to provide a further 1,656 burial plots.

The base case scenario projects that redevelopment of Waerenga Cemetery will be required around 2024. This would provide sufficient capacity to meet demand until at least 2045 when the residual capacity is projected to be over 1,520 burial plots.

Under the worst case scenario the redevelopment of additional land would need to be brought forward five years to 2019 and the 2045 residual capacity would be around 1,100 burial plots.

Figure 24 : Waerenga Cemetery - Summary graph

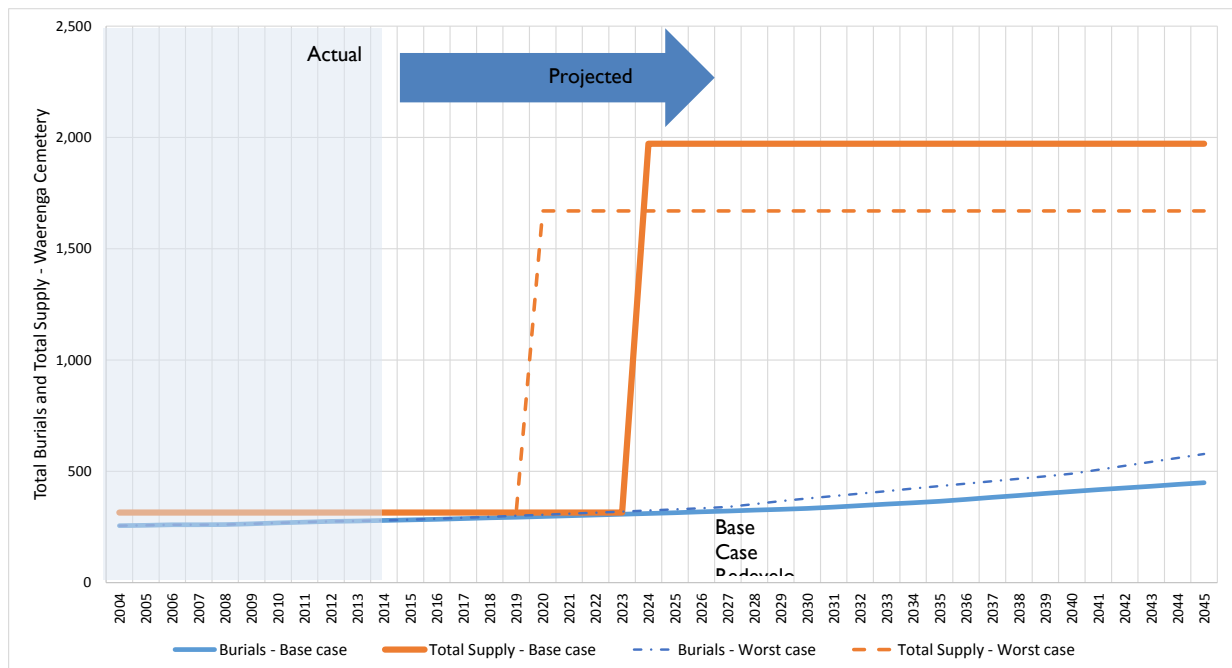


Table 21 : Waerenga Cemetery - Summary table

Supply - Base Case		Burials	Demand - Base Case		Burials
Burials on remaining actively maintained land		36	Existing number of burials (2014)		279
Burials on additional land		1,656	Historical average burials per year (2004 to 2014)		2
Total available residual supply as at 2014		1,692	Projected burials (2015 to 2045)		169
Total Supply (Residual + existing burials)		1,971	Total burials at 2045		449
CAPACITY DATE		Actively Maintained land	All available land	Residual Capacity at 2045	
Base case		2024	2045+	1,523	
Worst case		2019	2045+	1,092	

Whatawhata Cemetery

The Whatawhata Cemetery currently has nearly 450 burials. In the base case the burials per year are projected to increase over the next 30 years from around eight to nearly 30 burials per year. There is residual capacity on the actively maintained land for a further 47 burials. There is also additional land that can be developed to provide a further 4,767 burial plots.

The base case scenario projects that redevelopment of Whatawhata Cemetery will be required around 2017. This would provide sufficient capacity to meet demand until at least 2045 when the residual capacity would be around over 4,220 burial plots.

Under the worst case scenario the redevelopment of additional land would need to be brought forward one year to 2016 and the 2045 residual capacity would still be nearly 3,000 burial plots.

Figure 25 : Whatawhata Cemetery - Summary graph

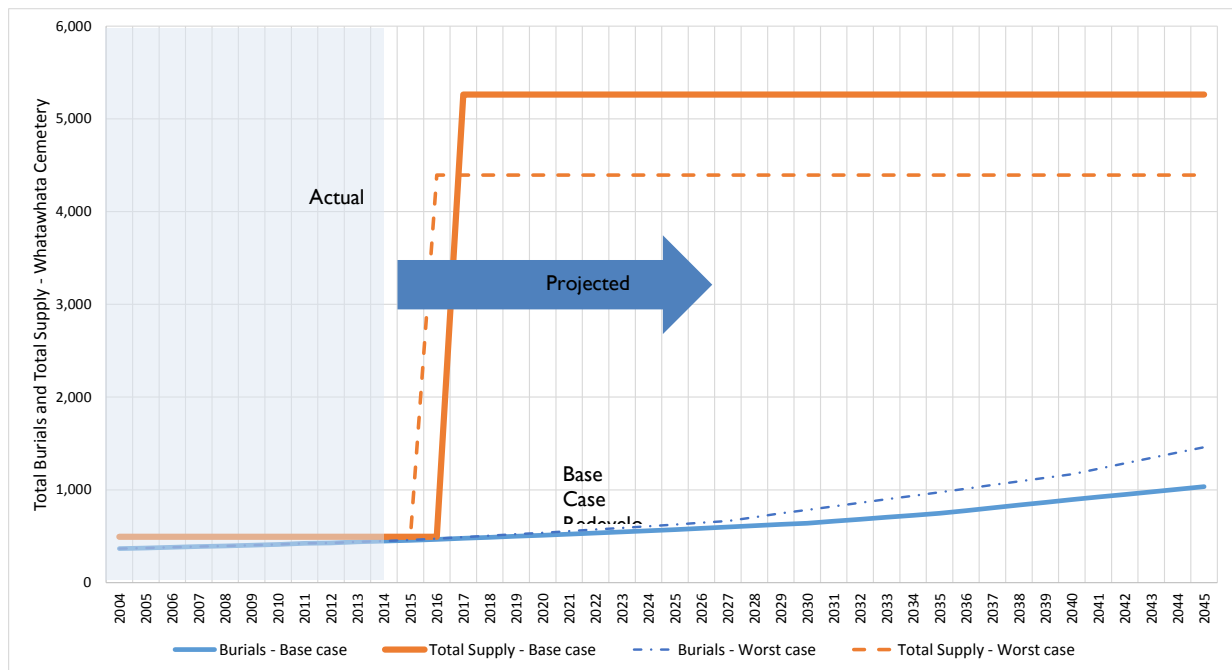


Table 22 : Whatawhata Cemetery - Summary table

Supply - Base Case		Burials	Demand - Base Case		Burials
Burials on remaining actively maintained land		47	Existing number of burials (2014)		447
Burials on additional land		4,767	Historical average burials per year (2004 to 2014)		8
Total available residual supply as at 2014		4,814	Projected burials (2015 to 2045)		586
Total Supply (Residual + existing burials)		5,261	Total burials at 2045		1,034
CAPACITY DATE		Actively Maintained land	All available land	Residual Capacity at 2045	
Base case		2017	2045+	4,227	
Worst case		2015	2045+	2,934	

Appendix 3 – Application forms and Information brochures

Application for Issue of Interment Warrant

Details of interment

Name of deceased:	
Place of residence:	
Age:	Religion:
Occupation:	Date of death:
Funeral date: Time:	Estimated arrival time at cemetery:
Funeral director:	
Cemetery:	
Plot previously reserved? YES / NO	If YES, under what name?
Berm / Row/ Plot number allocated:	
Size of grave: (please tick)	Standard <input type="checkbox"/> Extra Depth <input type="checkbox"/> Reopen <input type="checkbox"/> Ashes <input type="checkbox"/>
Type of Handles:	Fixed <input type="checkbox"/> Dropdown <input type="checkbox"/>
Size of casket:	Width :..... Length :..... Height :.....
Medical Certificate of Causes of Death Attached:	Yes <input type="checkbox"/> No <input type="checkbox"/>

I/we the undersigned being/in the absence of the person registered/to be registered as the grantee of the grave above mentioned **DO HEREBY REQUEST** to Waikato District Council to allow the grave to be opened and the body of the person below to be interred therein.

I certify I am duly empowered to authorise the opening of the grave and I/we, the undersigned, **DO HEREBY INDEMNIFY** Waikato District Council against all actions, proceedings, claims, demands, damages, costs, losses and expenses whatsoever by reason of Waikato District Council having consented to the opening of such grave and the interment therein.

I/we acknowledge and accept personal liability for the full payment of all fees herein described.

Full name of applicant:
Street address:
Postal address: (if different)
Telephone:	Mobile:
Relationship to deceased:
Signed:	Date:

0800 492 452

■ If calling from overseas +64 7 824 8633
■ publicenquiries@waidc.govt.nz

■ www.waikatodistrict.govt.nz
■ www.facebook.com/WaikatoDistrictCouncil

Postal Address
Waikato District Council
Private Bag 544
Ngaruawahia 3742

Huntly Office
142 Main Street
Huntly

Ngaruawahia Office
15 Galileo Street
Ngaruawahia

Raglan Office
7 Bow Street
Raglan

Te Kauwhata Office
1 Main Road
Te Kauwhata

Tuakau Office
2 Dominion Road
Tuakau

Payment Details

Payment in full (Preferred)	Payment by arrangement (to be approved by Finance Manager)
Plot charge: \$
Interment services fee: \$
Total payable: \$
Payment made: \$
Date:
Receipt number:

0800 492 452

■ If calling from overseas +64 7 824 8633
 ■ publicenquiries@waidc.govt.nz

■ www.waikatodistrict.govt.nz
 ■ www.facebook.com/WaikatoDistrictCouncil

Postal Address
 Waikato District Council
 Private Bag 544
 Ngaruawahia 3742

Huntly Office
 142 Main Street
 Huntly

Ngaruawahia Office
 15 Galileo Street
 Ngaruawahia

Raglan Office
 7 Bow Street
 Raglan

Te Kauwhata Office
 1 Main Road
 Te Kauwhata

Tuakau Office
 2 Dominion Road
 Tuakau

Application for Monument Permit

**In accordance with New Zealand Standard Headstone and Cemetery Monuments:
 NZS 4242: 1995**

Date of application:

Application is hereby made for permission to carry out monumental work in Ce
 metery.

Plot Number

Block Number

Only approved Monumental Masons or suitably qualified trades persons will be permitted to erect headstones and monuments in any Waikato District Council cemetery.

On approval of application for monument work an Approval Fax or email will be forwarded and must be carried at all times while working in the cemetery.

I hereby declare that all monumental masonry work carried out by the undersigned will be done in accordance with NZS 4242:1995 (Headstone and Cemetery Monuments), and also in accordance with Waikato District Council's Cemetery Bylaw 2008 and the Franklin District Council Cemetery ByLaw 2008.

I further understand that failure to comply with the above standards may result in a fine.

Name of Monumental Mason:

Address:

Fax/Ph/Email:

Signature of Monumental Mason:

Authority to be signed by authorized representative/owner of plot(s).

I hereby give my permission for the erection of the work described above, and in consideration of Council permitting the execution of such work on the above plot, I the undersigned hereby indemnify the Council against all actions, proceedings, claims, demands, damages, costs, losses and expenses whatsoever which may be made against or suffered by the Council in any manner whatsoever by reason of the Council having consented to the execution of such work.

0800 492 452

■ If calling from overseas +64 7 824 8633
 ■ publicenquiries@waidc.govt.nz

■ www.waikatodistrict.govt.nz
 ■ www.facebook.com/WaikatoDistrictCouncil

Postal Address
 Waikato District Council
 Private Bag 544
 Ngaruawahia 3742

Huntly Office
 142 Main Street
 Huntly

Ngaruawahia Office
 15 Galileo Street
 Ngaruawahia

Raglan Office
 7 Bow Street
 Raglan

Te Kauwhata Office
 1 Main Road
 Te Kauwhata

Tuakau Office
 2 Dominion Road
 Tuakau

Name of authorised representative:

Address:

Signature:

Particulars of Work

Name of deceased:

Activity	Single	Double	Ashes
Headstone			
Renovation			
Additional Inscription (detail below)			
Bronze Plaque			
Others (describe)			

Material the headstone is constructed of: _____

First Inscription:

Scale sketch showing all aspects of work to be carried out (brochure of appropriate monument may be substituted). Dimensions of intended work must also be included.

Second Inscription:

Scale sketch of monument detailing anchor points, layout etc. use separate page.

Please note, burial plot headstone plinth areas must comply with Waikato District Council Headstone specifications.

Proposed date of installation

Permit Number

Approved by
 Cemetery Officer

0800 492 452

■ If calling from overseas +64 7 824 8633
 ■ publicenquiries@waic.govt.nz

■ www.waikatodistrict.govt.nz
 ■ www.facebook.com/WaikatoDistrictCouncil

Postal Address
 Waikato District Council
 Private Bag 544
 Ngaruawahia 3742

Huntly Office
 142 Main Street
 Huntly

Ngaruawahia Office
 15 Galileo Street
 Ngaruawahia

Raglan Office
 7 Bow Street
 Raglan

Te Kauwhata Office
 1 Main Road
 Te Kauwhata

Tuakau Office
 2 Dominion Road
 Tuakau

Date

Confirmation of Headstone installation

In accordance with Council Cemetery Bylaws and approved Monument Permit application;

I _____ hereby confirm that the headstone as

approved by Waikato District Council has been erected on Plot _____ Block _____

_____ in the _____

_____ Cemetery on ____ / ____ / 20 ____.

Permit #

Signed _____

Authorized Monumental Mason

This form must be returned to Waikato District Council upon completion of the headstone installation. Failure to do so will be in breach of Council Bylaws and may result in the headstone being removed.

Please note: An electronic photograph of the installed or amended headstone must accompany the Headstone Installation Confirmation form. This will enable Council to ensure its online cemetery database is kept up to date.

Please return this form to:

Post Waikato District Council, Private Bag 544, Ngaruawahia 3720
Email services@waidc.govt.nz
Fax 07 824 8091

0800 492 452

■ If calling from overseas +64 7 824 8633
■ publicenquiries@waidc.govt.nz

■ www.waikatodistrict.govt.nz
■ www.facebook.com/WaikatoDistrictCouncil

Postal Address
Waikato District Council
Private Bag 544
Ngaruawahia 3742

Huntly Office
142 Main Street
Huntly

Ngaruawahia Office
15 Galileo Street
Ngaruawahia

Raglan Office
7 Bow Street
Raglan

Te Kauwhata Office
1 Main Road
Te Kauwhata

Tuakau Office
2 Dominion Road
Tuakau