

Ngaruawahia and Surrounds Structure Plan

Integrated Transportation Assessment



Ngaruawahia and Surrounds Structure Plan

Integrated Transportation Assessment

Client: Waikato District Council

Co No.: N/A

Prepared by

AECOM New Zealand Limited

121 Rostrevor Street, Hamilton 3204, PO Box 434, Waikato MC, Hamilton 3240, New Zealand
T +64 7 834 8980 F +64 7 834 8981 www.aecom.com

15-Sep-2014

Job No.: 60316752

AECOM in Australia and New Zealand is certified to the latest version of ISO9001, ISO14001, AS/NZS4801 and OHSAS18001.

© AECOM New Zealand Limited (AECOM). All rights reserved.

AECOM has prepared this document for the sole use of the Client and for a specific purpose, each as expressly stated in the document. No other party should rely on this document without the prior written consent of AECOM. AECOM undertakes no duty, nor accepts any responsibility, to any third party who may rely upon or use this document. This document has been prepared based on the Client's description of its requirements and AECOM's experience, having regard to assumptions that AECOM can reasonably be expected to make in accordance with sound professional principles. AECOM may also have relied upon information provided by the Client and other third parties to prepare this document, some of which may not have been verified. Subject to the above conditions, this document may be transmitted, reproduced or disseminated only in its entirety.

Quality Information

Document Ngaruawahia and Surrounds Structure Plan
 60316752
 Ref p:\603x\60316752\6. draft docs\6.1 reports\traffic\ngaruawahia and surrounds structure plan.docx
 Date 15-Sep-2014
 Prepared by Norm Robins
 Reviewed by Shaun Lion-Cachet

Revision History

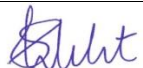
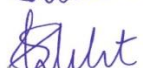
Revision	Revision Date	Details	Authorised	
			Name/Position	Signature
	15/09/14	Review	Shaun Lion-Cachet Principal Engineer	
	04/12/14	Final	Shaun Lion-Cachet Principal Engineer	

Table of Contents

Executive Summary	i
1.0 Glossary of Terms	1
2.0 Introduction	2
3.0 Land Use Planning Context	2
4.0 Existing Traffic Environment	3
4.1 Traffic Volumes	3
4.2 Travel modes	4
4.3 Road Safety	5
4.3.1 Ngaruawahia	5
4.3.2 Taupiri	6
4.3.3 Horotiu	6
4.3.4 Te Kowhai	7
5.0 Planning and Policy Framework	7
5.1 Waikato Integrated Land Transport Strategy	7
5.2 District Plan	8
5.3 Urban Design	8
6.0 Land Use Assumptions	8
6.1 Industrial and commercial development	8
6.2 Community facilities	9
6.3 Residential	9
7.0 Transportation Challenges and Opportunities	14
7.1 Serving residential growth areas	14
7.1.1 Taupiri	14
7.1.2 Ngarurawahia	14
7.1.3 Horotiu	14
7.1.4 Te Kowhai	15
7.2 Great South Road, Ngaruawahia	15
7.3 Modal Split	17
7.4 Glen Massey and Waingaro Road	17
8.0 Conclusions	17
Appendix A	
Crash Listings and Collision Diagrams	A

Executive Summary

Growth projections for Ngaruawahia and its environs are modest, apart from for industrial development at Horotiu for which the roading infrastructure has already been put in place. The advent of the Te Rapa Bypass and Ngaruawahia Bypass has removed much of the former state highway traffic from the historical routes of SH1 and SH39 through Ngaruawahia and parts of Taupiri and Te Kowhai. These changes and land use forecasts mean there is little in the way of structure planning required from a roading perspective.

Opportunities exist for some traffic management measures to improve circulation and complement potential environmental upgrading of Great South Road through the commercial part of Ngaruawahia. Residential subdivision in Ngaruawahia, Taupiri and Horotiu is of a scale such that it can be largely managed in roading terms through the normal Subdivision and Technical Specification compliance procedures in the District Plan.

The only exception that requires some protection through a Structure Plan is a proposal to construct a future upgraded intersection where Great South Road meets Saulbrey Road, and ensuring connectivity between Saulbrey Road and the existing urban development to the north. The Great South Road/Saulbrey Road intersection could be in the form of a signalised crossroads or a roundabout and would cater safely for increasing traffic from subdivision off Saulbrey Road, provide access to development between Great South Road and the Waikato River, and could provide a safer access to the Ngaruawahia Golf Club. It would provide a threshold to the lower speed environment in Ngaruawahia.

1.0 Glossary of Terms

The following abbreviations and terms are used in this report

ADT	Average Daily Traffic
District Plan	The Operative Waikato District Plan
HCV	Heavy Commercial Vehicle
NIMTR	North Island Main Trunk Railway
NZTA	The NZ Transport Agency
SH	State Highway
vpd	Vehicles per day

2.0 Introduction

Waikato District Council is preparing a Structure Plan for Ngaruawahia and the surrounding area. The Structure Plan is intended to be incorporated into the District Plan with the purpose of guiding development for the next 30 years or so, and will include land uses, infrastructure requirements, community facilities, environmental objectives and urban design.

This report examines the requirements, opportunities and options for all modes of transportation.

The study area is shown in Figure 1. It extends from Taupiri in the north to Te Kowhai in the south and out to Glen Massey to the west. The Waikato Expressway forms the western boundary of the study area.

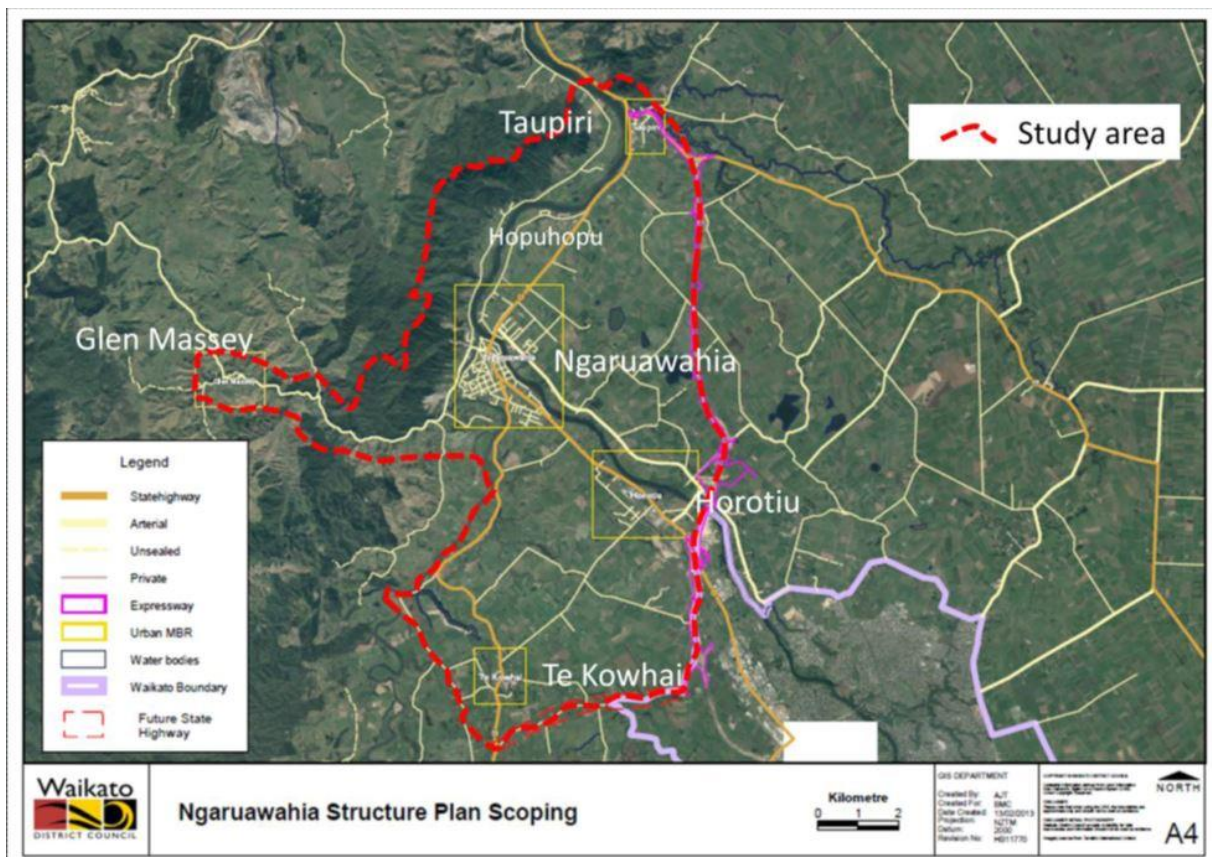


Figure 1 Ngaruawahia and Surrounds Study Area

3.0 Land Use Planning Context

Ngaruawahia has a population recorded at 5127 in the 2013 census. The Taupiri Community was recorded at 417, Te Kowhai 1509 and Horotiu 768. The census populations of Taupiri, Horotiu and Te Kowhai include rural residential areas around the actual townships. Glen Massey is not identified separately in the census but has a population of around 225.

The Future Proof strategy which is also embodied in the Waikato District Growth Strategy identifies the possibility of significant growth in all these areas, but notes that these are potentials in planning terms rather than being expectations.

Ngaruawahia provides the administrative centre, and some employment, in the form of the Waikato District Council head offices and works depot. It also provides other services and local retail opportunities and is a cultural centre by virtue of being home to the Turangawaewae Marae, seat of King Tuheitia. However, the major employment source for the town lies to the south with Horotiu, Te Rapa and Hamilton. There is also a strong retail draw to Hamilton, particularly with the advent of The Base. The construction of the Ngaruawahia Section of the Waikato Expressway has removed high volumes of through traffic from Great South Road, the main road through

the town. This may have resulted in the loss of some trade but has also much improved local accessibility for all forms of transport and offers opportunities for enhancement along the former state highway corridor.

Like Ngaruawahia, the population of Taupiri has varied very little since the 2001 census and no dramatic growth is expected. However, the environment of the town has been improved by removal of the state highway traffic from Great South Road, with state highway traffic now just cutting through the northern part of the township. When the Huntly section of the Waikato Expressway opens more state highway traffic will also bypass the town, but will be partly replaced in time by some growth in traffic from the Huntly area. The proximity of Taupiri to the Waikato Expressway offers quick routes to both Auckland and Hamilton which could potentially be attractive to some small businesses or residents.

Horotiu is home to a small community, historically built largely around the meat works (Affco) and with a primary school that serves the local district. Infrastructure is in place for the first stage of the Northgate industrial estate in Horotiu and the first businesses are now starting to populate the development. This will be an important employment zone for workers from Ngaruawahia, Hamilton and the surrounding areas, with easy access to the Waikato Expressway. Limited residential growth is seen as a possibility between the former state highway and the Waikato River.

Te Kowhai is a small rural township with a primary school and some local shops serving the town and surrounding rural and rural residential areas. In terms of employment, secondary education, retail, and other services it probably has more connection with Hamilton than Ngaruawahia. The ability to service the township with water and wastewater reticulation is likely to limit the residential growth of the town for the foreseeable future.

4.0 Existing Traffic Environment

4.1 Traffic Volumes

The road network in this Structure Plan area has historically been dominated by state highway traffic, associated with both SH1 and SH39. The advent of the Ngaruawahia Section of the Waikato Expressway has removed much through traffic from Taupiri and Ngaruawahia and also affected SH39 traffic, with SH39 traffic being re-directed to use the Waikato Expressway via Te Rapa rather than the former SH39 route between Te Kowhai and Ngaruawahia. The Huntly Section of the Waikato Expressway can be expected to add to the diversion of traffic away from the previous SH1 and SH39 routes.

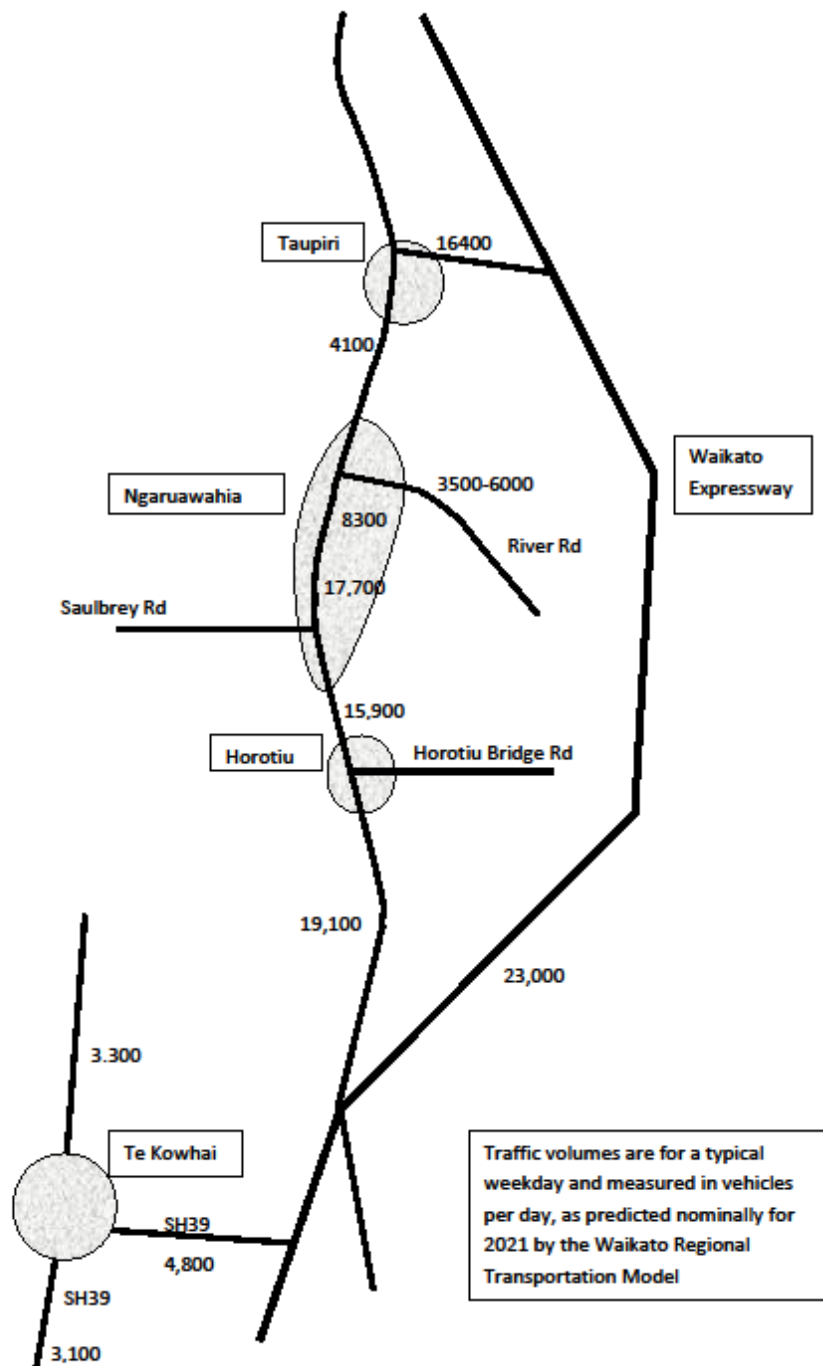
Traffic patterns of local roads in the vicinity of the Waikato Expressway will also have changed. For structure planning purposes it is therefore more useful to look at predicted traffic volumes rather than considering historical traffic volumes.

The following traffic volumes are what the Waikato Regional Transportation Model (WRTM) is predicting for 2021¹ for a typical weekday. In recent years actual traffic growth has been trending slower than the WRTM predicts so the traffic volumes probably represent a year well beyond 2021.

Points to note are that the traffic volume on the former SH1 through the town centre part of Ngaruawahia is forecast to be around 8,300 vpd which is still in the realms of an arterial road traffic volume, although probably less than half what it was prior to the Ngaruawahia Section of the Waikato Expressway opening. The traffic volume rises heading south through Ngaruawahia to be over 17,700 vpd by the Saubrey Road intersection, with traffic volumes through Horotiu very similar to what they were prior to the opening of the Ngaruawahia Section of the Expressway. These traffic volumes assume substantial development of the Northgate Industrial Estate, generating 6,000 vpd.

¹ Model Network WI21TRFALL20.NL

Figure 2 2021 predicted traffic volumes



4.2 Travel modes

The 2013 census recorded the travel modes shown in Table 1 for Ngaruawahia residents for the journey to work for people in the labour force who worked on the day of the census:-

Table 1 Travel Modes for Ngaruawahia

Mode	Number	Modal percentage of those who travelled
Worked at home	297	-
Did not work	351	-
Private vehicle (driver)	1968	70%
Company vehicle (driver)	441	16%
Passenger in private/company vehicle	123	4.4%
Public bus	51	1.8%
Motorcycle	54	1.8%
Cycle	36	1.3%
Pedestrian	114	4.1%
Other	15	
Total	3447	

The modal split for people whose workplace was in Ngaruawahia (and may or may not live in Ngaruawahia) was similar, but with less than 1% using a public bus.

The low proportions of journeys on foot and by cycle are probably partly indicative of the majority of employment being in Hamilton or not close to Ngaruawahia.

The current bus service for Ngaruawahia comprises hourly services to and from Hamilton (the Northern Connector Service 21) with more frequent services at peak times. Five buses leave Ngaruawahia for Hamilton between 6.50am and 7.50am and return at approximately half hourly intervals in the evening peak period. Approximately half of these services extend to Huntly. The route between Hamilton and Ngaruawahia runs through Horotiu, The Base and the Te Rapa Road industrial area.

4.3 Road Safety

Crash listings and collision diagrams are included in Appendix A for Ngaruawahia, Taupiri, Horotiu and Te Kowhai.

4.3.1 Ngaruawahia

A little over half of the reported crashes in Ngaruawahia in the 5 year period of 2009-2013 have occurred on the state highway (SH1) as might be expected because of the traffic volumes. Of the 120 reported crashes on SH1 there are clusters as shown in Table 2.

Table 2 Crash clusters on SH1 in Ngaruawahia

Location	Number of reported crashes 2009-2013		
	Fatal or serious injury	Minor injury	Non-injury
River Road intersection	1	1	5
50m each way from Market Street intersection	0	2	9
Princess Street/Newcastle Street crossroads	0	2	14
30-100m south of Newcastle Street intersection	1	3	9

SH39 intersection	0	0	5
Havelock Road intersection	2	1	3

The River Road, SH39 and Havelock Road intersection crashes mostly have failure to give way exiting the side road as a factor. The higher severity of the crashes at the Havelock Road intersection reflects the higher speed environment. The posted speed is 70km/h posted but the intersection is only about 200 metres north of the 70/100km/h transition so northbound vehicles are likely to be travelling faster and were involved in five of the six reported crashes.

The mid-block crashes from Market Street through to south of Newcastle Street have a mix of crash types symptomatic of high through traffic volumes interacting with the vehicle and pedestrian movements generated by retail and commercial activity, with rear end type crashes being common.

The reduction in through traffic resulting from the Ngaruawahia Section of the Expressway should lead to a significant reduction in all these crashes.

Away from SH1 notable crash locations are shown in Table 3.

Table 3 Ngaruawahia crash clusters outside SH1 (Great South Road)

Location	Number of reported crashes 2009-2013			Comments
	Fatal or serious injury	Minor injury	Non-injury	
SH39/Saulbrey Road	0	1	3	Loss of control turning
Ellery Street/Herschel Street	1	3	2	Alcohol and speed over represented factors
Waingaro Road (rural length)	2	4	7	Mainly loss of control crashes with speed a common factor

Issues that may be relevant to the Structure Plan are traffic management on Great South Road from Market Street through to Newcastle Road, and the speed environment and access to Great South Road south of Ngaruawahia..

4.3.2 Taupiri

The crash history in Taupiri is dominated by the SH1/SH1B intersection as would be expected, with 15 crashes being reported in the 2009-2013 period. However, in 2012 the intersection was changed from a priority controlled T-intersection to a roundabout and since then there has been a reduction in the crash rate and severity with 4 non-injury and one minor injury crash reported.

Otherwise there is nothing of note in the crash history, with most of the other crashes which have been reported being on the former SH1 road from which much of the traffic has now been diverted.

There are no issues relevant to the Structure Plan.

4.3.3 Horotiu

The crash records on SH1 north of the built up area of Horotiu are characterised by a high number of loss of control crashes which is somewhat unexpected given that the alignment of the road involves only gentle radii and gradients. Most of the crashes have involved injury which is partly a consequence of the high speed environment (100km/h posted speed). Diversion of traffic to the Waikato Expressway should result in a proportionate reduction in crashes but as this stretch of road will become relatively busy again in time, investigation of the crashes and potential remedial treatments may be warranted in 5-10 years' time if a high number of crashes continue to occur.

A scattering of crashes has occurred through the built up area of Horotiu many of which have been related to access and manoeuvring. The speed limit was lowered from 80km/h to 70km/h through this area last year and traffic signals were introduced at the Horotiu Bridge Road/SH1 (former) intersection so the environment has changed significantly and a reduction in crashes and their severity would be expected, aided by the diversion of traffic to the Waikato Expressway. The traffic signals were initiated by the need to cater for traffic generated by the

Northgate industrial development in the future. This has the potential to significantly change traffic movements in the immediate area as well as generating more pedestrian and cyclist activity.

At present there do not appear to be any road safety issues relevant to the Structure Plan.

4.3.4 Te Kowhai

The crash statistics through and near Te Kowhai are dominated by loss of control crashes on SH39, particularly towards the south near the Limmer Road intersection. The NZ Transport Agency has been implementing measures to help address such crashes and it is noticeable that no crashes were reported in 2012 or 2013.

There are no issues relevant to the Structure Plan.

5.0 Planning and Policy Framework

5.1 Waikato Integrated Land Transport Strategy

The Waikato Integrated Land Transport Strategy (WILTS) was prepared by Opus International Consultants in 2012 but has not progressed beyond a draft stage to be formally adopted. This Strategy was prepared in conjunction with the NZ Transport Agency, Waikato Regional Council and the Future Proof Transport Reference Group amongst other key stakeholders and aligns with the Waikato Regional Land Transport Strategy and the Future Proof sub-regional growth strategy.

One of the purposes of WILTS is to “provide direction on the future form and function of Waikato District Council’s road network”. Seven action areas were identified. An interpretation of how these action areas relate to the Ngaruawahia and environs area is shown in Table 1.

Table 4 Draft Waikato Integrated Land Transport Strategy Action Areas

Action Area	Commentary on draft Integrated Land Transport Strategy actions.
Planning for growth	Industrial and commercial growth only relevant at Horotiu and is already planned for in roading terms. Residential growth only envisaged in small cells not requiring any fundamental changes to the road network. Completion of the Waikato Te Awa cycle trail through to Ngaruawahia and on to Taupiri could cater for growth in commuter cycling.
Improving road safety	Continue to implement and review the Waikato District Road Safety Action Plan in line with the national Safer Journeys road safety strategy and the five priorities of Safe speeds, Safe roads and roadsides, Safe vehicles, Safe road use and Coordination.
Managing the transport network	Six actions were identified: Maintain, operate and preserve the existing network (as a first priority covering 90% of spending). Improvements to provide additional capacity and address safety issues (remaining 10% of spending). Review and update the form and function of the strategic and local road network in line with growth and tourism. During road rehabilitation activities consider opportunities to reconstruct the road to appropriate design widths (road hierarchy) and provision for walking, cycling and passenger transport. Manage route security and protect key strategic transport corridors. When implementing new transport projects ensure early consideration to avoid, remedy or mitigate adverse environmental effects.
Supporting freight transport	The local road network should be maintained and improved in line with the road hierarchy to ensure appropriate levels of service and efficient movement of freight. Identification of HPMV (high productivity motor vehicle) routes may be appropriate. Action under this heading will likely be limited to the Horotiu area, but has already largely been planned for with the Great South Road form between Horotiu and the Waikato Expressway Te Rapa

Action Area	Commentary on draft Integrated Land Transport Strategy actions.
	interchange.
Supporting rail transport	Examine the potential for passenger train services between Hamilton and Auckland including extending the current Auckland passenger train service. Ensure residential and freight intensive activities are located where there is good access to the rail network and safeguard land for rail connections with major producers/consumers. This action area has been taken into account in the zoning of the Northgate industrial area. Horotiu, Ngaruawahia and Taupiri are all located on the NIMTR should passenger services ever eventuate.
Promoting bus transport	Provide infrastructure for bus services and review on an ongoing basis the efficiency of existing services and the feasibility of new services. Monitor opportunities for park and ride at key locations. The development of the Northgate industrial area and the Rotokauri employment and residential areas may warrant new and improved bus services in the future.
Encouraging walking and cycling	A range of actions were identified for identifying and implementing walking and cycling facilities and otherwise encouraging these modes. This included making explicit provision in structure plans for walking and cycling.

5.2 District Plan

In roading terms there is nothing envisaged that will emanate from the Ngaruawahia and Environs Structure Plan which will need to be brought into the District Plan because the extent of growth envisaged is too small to require new additions to the network beyond what will be needed within subdivisions.

5.3 Urban Design

Waikato District Council recognises the Ministry for Environment's Urban Design Protocol (UDP) some of the principles of which are embodied in the Waikato Integrated Land Transport Strategy. Two of the key strands of the UDP which apply to transportation are:-

- Choice: promoting diversity and choice for people (e.g. enabling choice of transport modes to suit sustainable lifestyles, ensuring infrastructure and land use are designed and planned so as not to prejudice future transportation choices).
- Connections: creating safe and attractive links; placing a high value on walking, cycling and public transport; anticipating demands for all transport modes; facilitating access to services; efficient movement of goods and freight.

A separate Urban Design report has been prepared in parallel with this Integrated Transportation Assessment.

Whilst the philosophies and principles of the UDP may be accepted, the Structure Plan needs to strike a balance between what may be aspirational from an urban design perspective, what is practically and economically achievable, and what the residents and businesses preferences may be.

6.0 Land Use Assumptions

6.1 Industrial and commercial development

Other than some growth in retail, commercial and services activities in the heart of Ngaruawahia to support the local community the only significant employment growth is expected to be at Horotiu. It is understood that there is sufficient space for retail and commercial activity already carrying a Business zoning in Ngaruawahia.

As noted earlier, the Northgate industrial area at Horotiu has been identified as potentially generating up to 6,000 vpd, providing employment opportunities for Ngaruawahia, Hamilton and the environs.

6.2 Community facilities

No significant new community or sports facilities have been planned, but it is noted that a Papakaianga zoning is a possibility to enable development of iwi related activities and facilities.

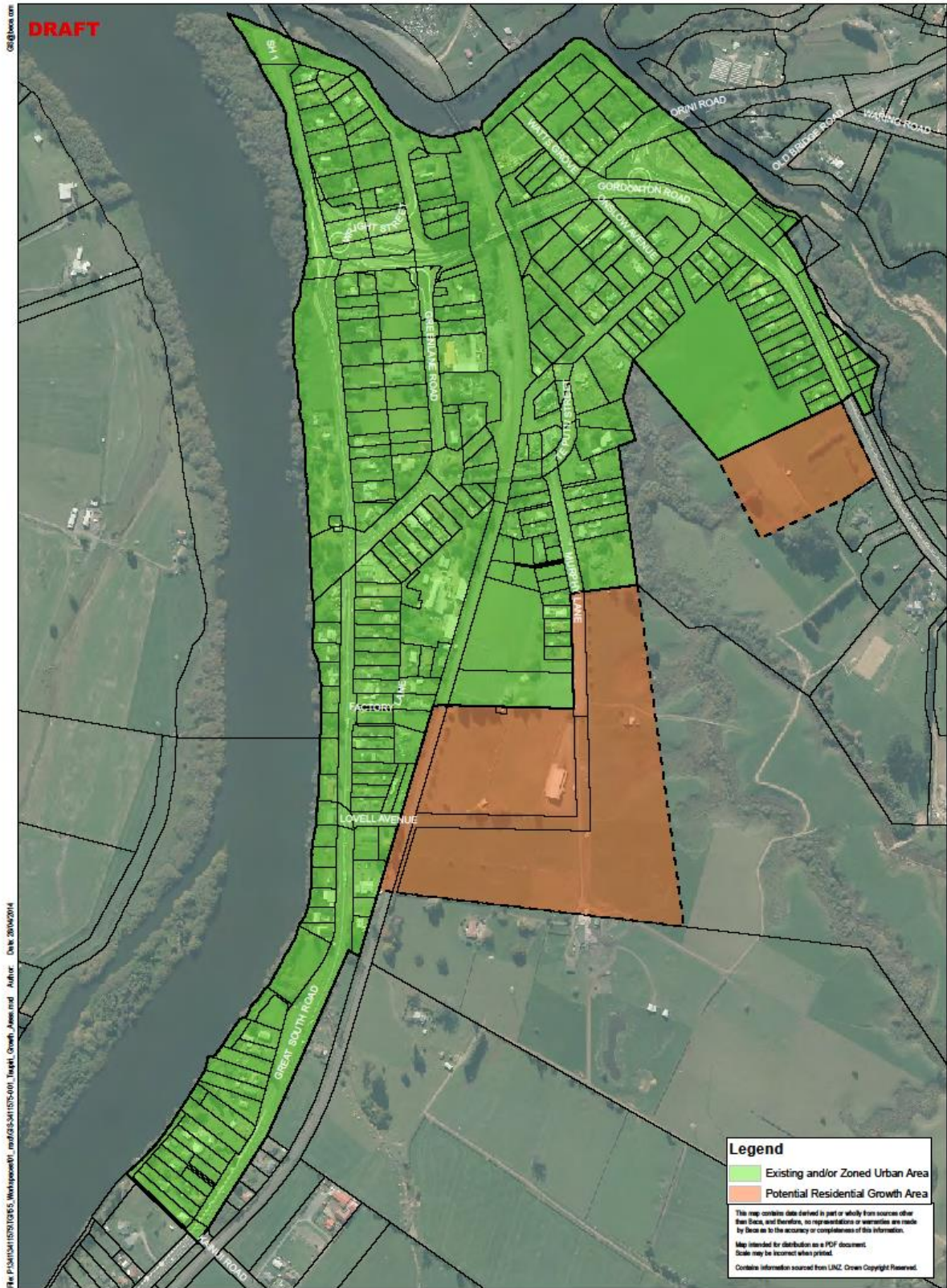
6.3 Residential

The urban design study undertaken for this Structure Plan preparation has identified some potential residential growth areas in Ngaruawahia, Taupiri, Horotiu and Te Kowhai. The most significant growth is expected to be at Ngaruawahia but is still modest. Plans are included on the following pages showing the potential residential growth areas.

Waikato District Council has estimated about 20% growth in 20 years but this estimate was prior to the 2013 census results. Future Proof in 2009 stated population growth estimates which are higher (240% increase in Ngaruawahia's population between 2006 and 2041) but this is now looking unrealistically high as there has been minimal growth between 2006 and 2013. The Property Economics study conducted for this Structure Plan preparation forecast a considerably lower growth rate for the Ngaruawahia environs with just 22% population growth to 2041.

Water and wastewater servicing limitations are likely to limit growth at Te Kowhai until resolved.

In view of all the above factors the 1% growth rate for the Structure Plan area seems to be an upper bound for transport planning, translating to a population of 6,800-7,000 in Ngaruawahia in the next 30 years. Traffic growth could be expected to mirror this 30% growth in population.

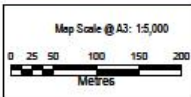


G:\Beca.com
 The P:\S\141107\GIS_Workspaces\141107\GIS\141107_Taupiri_Growth_Areas.mxd Author: Date: 26/09/2014

Legend

- Existing and/or Zoned Urban Area
- Potential Residential Growth Area

This map contains data derived in part or wholly from sources other than Beca, and therefore, no representation or warranties are made by Beca as to the accuracy or completeness of this information.
 Map intended for distribution as a PDF document.
 Scale may be incorrect when printed.
 Contains information sourced from LINZ. Crown Copyright Reserved.

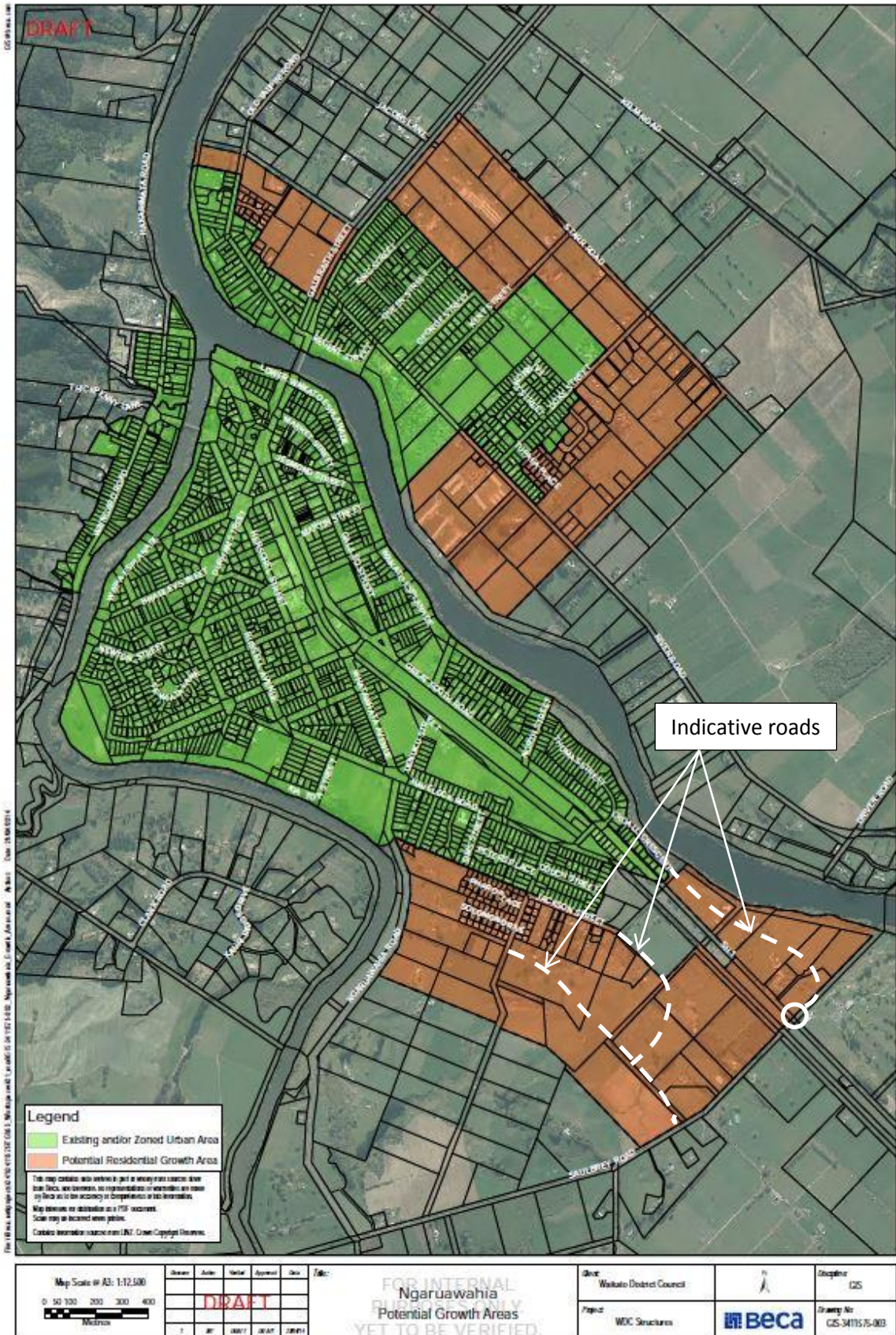


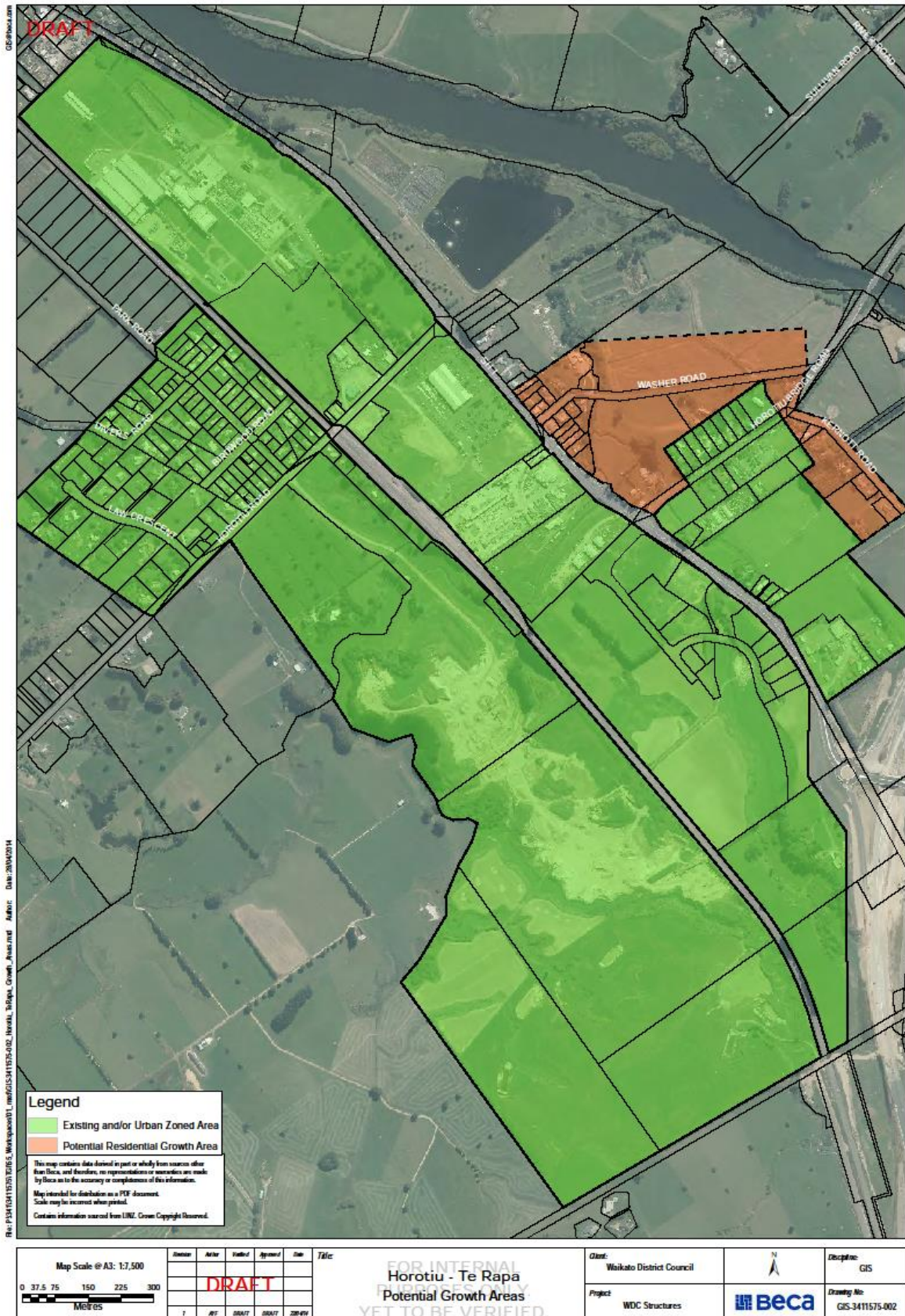
Drawn	Author	Checked	Approved	Date	Title

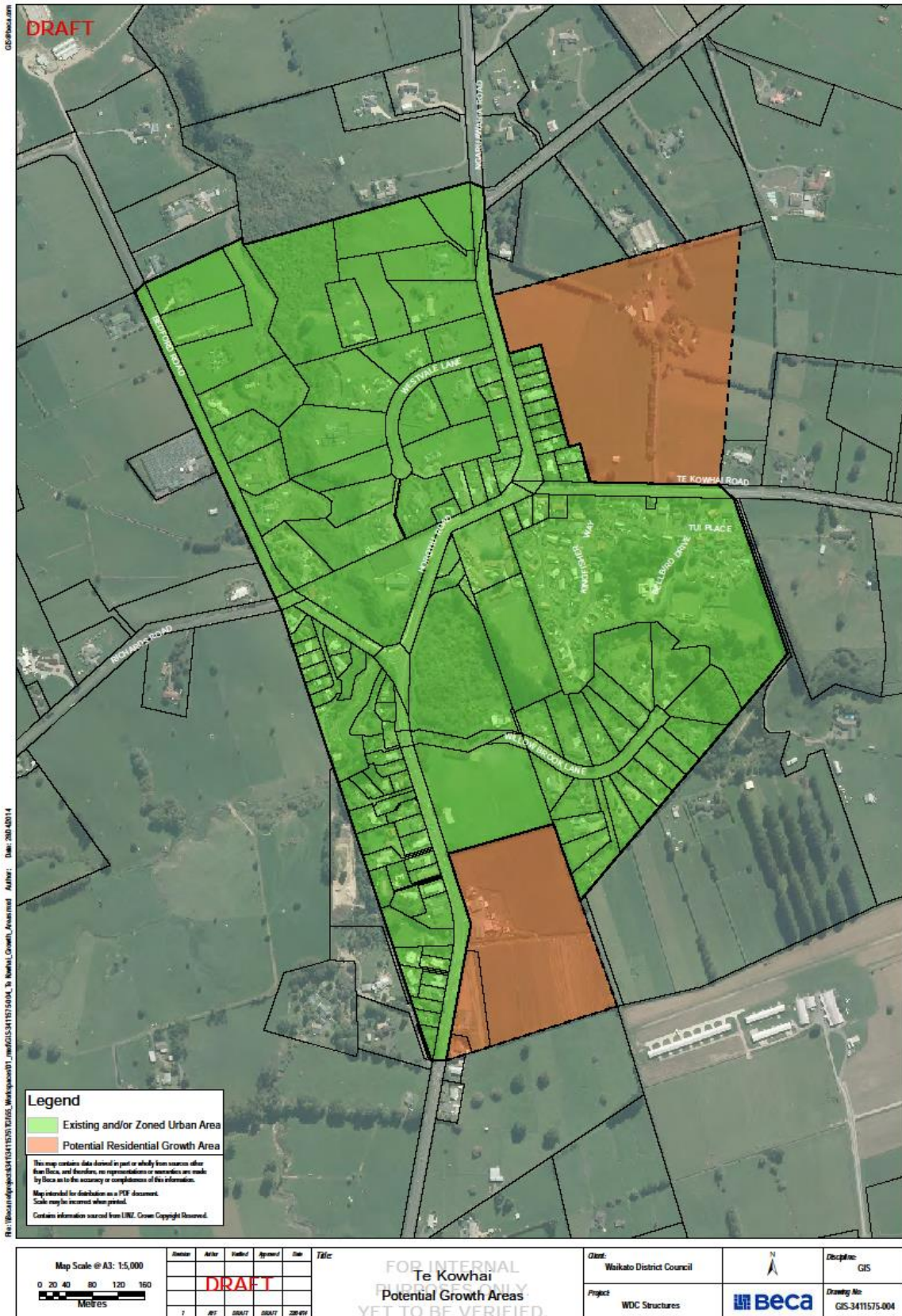
FOR INTERNAL USE ONLY
TAUPIRI
Potential Growth Areas
YET TO BE VERIFIED.

Client:	Waikato District Council
Project:	WDC Structures

Discipline:	GIS
Drawing No:	GIS-3411575-001







7.0 Transportation Challenges and Opportunities

7.1 Serving residential growth areas

7.1.1 Taupiri

The NIMTR and a deep gully system limit growth to being served from culs-de-sac, being either an extension of Murphy lane or a new loop road off Te Putu Street. Whilst modest, these areas appear sufficient to satisfy the currently anticipated demand for residential growth in Taupiri. Should any further growth be required it would most appropriately involve extending Murphy Lane to link with Kainui Road to ensure some connectivity was provided. Murphy lane should be developed with an alignment and cross-section that does not hamper such a future extension.

7.1.2 Ngarurawahia

On the north-eastern side of Ngaruawahia there is a ready grid network of streets formed by Starr Road, Kent Street, Duke Street, an unformed paper road on the south-eastern side, plus extensions to King Street and Queen Street. The land between River Road and the Waikato River could also readily be served by culs-de-sac from River Road.

On the western side of the NIMTR at the northern end of the town, Galbraith Street and Old Taupiri Road provide a framework for the area between to be served from a road connecting the two streets.

Topographical constraints limit the easily serviceable area at the southern end of the town west of the NIMTR. Any subdivision in this area should be undertaken in such a way as to provide or at least protect connectivity between Jackson Street, Rangimarie Street and Saulbrey Road. This will not only be beneficial for servicing and public transport connectivity but will reduce reliance on the Saulbrey Road/Great South Road intersection. As traffic volumes grow on Great South Road coupled with growing traffic volumes from development off Saulbrey Road, this intersection may become a safety concern.

One solution to the potential Saulbrey Road safety concern would be to introduce a roundabout or traffic signals at this location on Great South Road which could incorporate a fourth leg to the north east able to serve the residential land earmarked for development between Great South Road and the Waikato River. This block of land should ideally connect to Croall Crescent or have another access to Great South Road, subject to the speed limit on Great South Road being lowered in the future. Such a road could also provide a safer option for accessing the Ngaruawahia Golf Club than its present access on Great South Road. The intersection would form a logical threshold to a 70km/h or 80km/h speed limit, extending the existing 70km/h speed limit from Ngaruawahia. The choice between a roundabout and signals would need to consider, amongst other things, compatibility with the nearby rail crossing. With an appropriate lane configuration traffic signals could be linked to the rail crossing barriers and warning lights to avoid queues blocking Great South Road.

The railway creates a degree of severance for the town although this is moderated in terms of there being four level crossings within the township at Waingarō Road, Princess Street, Ellery Street and Havelock Road. At Princess Street and Waingarō Road there is minimal queuing length on the Great South Road side of the level crossings, making it important to maintain sufficient left and right turn lane lengths on Great South Road to avoid through traffic being impeded by queues.

The level crossings at Ellery Street and Havelock Road have better queuing lengths available in both directions of approach to the crossings. The Havelock Road crossing in particular will experience increased traffic with the proposed residential growth to the south and consequently a little longer queues and delays when trains pass through. However, the delays and queues could only be avoided by grade separation and will be a long way short of justifying that even if it was practically achievable, which is questionable.

Advanced signage of queues, potentially of an electronic type activated by approaching trains could be considered if queues presented safety issues at any of the level crossings.

7.1.3 Horotiu

Subject to some upgrading of the road corridor and its intersection with Great South Road, Washer Road can readily serve the small area earmarked for residential growth in Horotiu.

7.1.4 Te Kowhai

The southern potential growth area identified for Te Kowhai could appropriately be served via one new intersection on Horotiu Road. Direct property access to Horotiu Road should be avoided as it is likely to remain a relatively highly trafficked road, even with the diversion of SH39 to Limmer Road.

The northern potential growth area has frontage to both Ngaruawahia Road and Te Kowhai Road. Given the existence of the Westvale Road intersection and other existing accesses further north, it is recommended that the extent of the growth area be curtailed to finish in line with the northern boundary of the last existing property fronting Ngaruawahia Road in the 50km/h speed zone. Access to the block would then be taken solely from Te Kowhai Road. This access could comprise both a local road intersection and frontage access. The frontage access would complement the development on the southern side and reinforce a 50 km/h speed environment.

7.2 Great South Road, Ngaruawahia

The changed traffic environment on Great South Road following the removal of most state highway traffic presents opportunities for traffic management measures to aid retail and commercial activities and to enhance the environment. It is understood that the 'Thermal Highway' tourist route will remain as being signed through Ngaruawahia and the function of being a service centre for car traffic could be promoted, offering toilets, petrol and food outlets for travellers.

Enhancements could include :-

- Angle parking if there is demand for more parking
- Narrowing of the carriageway to make it appear less like a major through route and to aid pedestrians crossing
- A small roundabout at the Great South Road/Martin Street intersection to moderate vehicle speeds and provide some opportunity for beautification. Alternatively the treatment could just be some kerb extensions to create something of a threshold or gateway. The service station access on the south-eastern corner is a complication for any treatment at this intersection.
- A roundabout at the Great South Road/Jesmond Street intersection to moderate vehicle speeds and improve access to and from Jesmond Street (right turns are currently prevented by a median island on Great South Road)
- Removal of the left turn lane exiting Waingaro Road so that the Great South Road carriageway can be narrowed. This would create a less road dominated appearance, and would avoid the current acceleration and merge arrangement which is less safe than a conventional high angle 'Give Way' approach.

Any works carried out will be largely driven by environmental and urban design objectives rather than traffic objectives as the existing layout can continue to function safely and efficiently. Any design would therefore need to be undertaken jointly by urban designers and traffic engineers. The above suggestions are shown on the plan on the following page.

There is also scope around the fringes of the central area to improve the facilities for pedestrians accessing the central area and the domain and community facilities on the western side of Great South Road. Examples are constructing footpaths on Waingaro Road and around the Jesmond Street/Galileo Street/Newcastle Street intersection.

AECOM
 Ngaruawahia
 Structure Plan

Waikato DISTRICT COUNCIL

DATE: 15 SEP 2014
 TIME: 10:00 AM
 PROJECT: NGAUWAHIA AND SURROUNDS STRUCTURE PLAN

PROJECT MANAGER: [Name]
 PROJECT ENGINEER: [Name]
 PROJECT SURVEYOR: [Name]

FOR INFORMATION ONLY
 SUBJECT: [Subject]

DATE: [Date]
 TIME: [Time]

SUBJECT: [Subject]

SCALE: 1:1000

DATE: [Date]
 TIME: [Time]

PROJECT NUMBER: [Number]
 SHEET NUMBER: [Number]
 SHEET TITLE: [Title]



7.3 Modal Split

Ngaruawahia will not have the sort of traffic congestion issues which often provide incentives to increase use of public transport and walking and cycling, although traffic generated within Ngaruawahia may contribute to congestion in Hamilton. That aside, for environmental and health reasons it would be positive to increase the current low percentages of journeys, particularly to and from work, which are made using public transport or on foot or by bicycle.

Review of services should be carried out regularly. Routing buses through the residential areas on both sides of the river, rather than only along Great South Road would reduce walking distances. Connectivity with other services may also help patronage. A satellite transport hub at The Base has been raised as an option and could conveniently provide better connectivity, possibly with a circular service running regularly between Ngaruawahia and The Base via Horotiu and the Northgate industrial estate.

The completion of the Te Awa cycleway between Ngaruawahia and Hamilton will provide an attractive traffic free route for cyclists. For more confident cyclists Great South Road now also provides a good option, having wide shoulders and lower traffic volumes than previously. Maintenance of debris free shoulders and preferably resurfacing with asphalt will aid the attractiveness to cyclists.

Passenger rail is a possibility in terms of accessibility to the rail lines but would require considerable expenditure on station facilities at Horotiu, Ngaruawahia and Taupiri as well as being dependent on the wider viability of a service running between Hamilton and Auckland. It seems unlikely to be a reality in the foreseeable future but is something on which a watching brief should be kept.

7.4 Glen Massey and Waingaro Road

There are no structure planning roading issues envisaged for Glen Massey. The key concern for Glen Massey residents, and other users of Waingaro Road such as residents of Pukemiro and Glen Afton, is one of route security. This relates to ongoing maintenance and improvements where possible to minimise the occurrence and consequences of closures due to slips or flooding, and to maintain and improve safety.

8.0 Conclusions

The limited growth projections for Ngaruawahia and its environs, coupled with the removal of state highway traffic from the historical routes of SH1 and SH39 mean there is little in the way of structure planning required from a roading perspective.

Opportunities exist for some traffic management measures to complement potential environmental upgrading of Great South Road through the commercial part of Ngaruawahia. Residential subdivision in Ngaruawahia, Taupiri and Horotiu is of a scale such that it can be largely managed in roading terms through the normal subdivision and Technical Specification compliance requirements in the District Plan.

The only exceptions that require some protection through a Structure Plan is a proposal to form a future crossroads at the intersection of Great South Road and Saalbrey Road controlled either by traffic signals or as a roundabout, and ensuring connectivity between Saalbrey Road and the existing urban development to the north. The intersection would cater safely for increasing traffic from subdivision off Saalbrey Road, provide access to development between Great South Road and the Waikato River and could also provide a safer access to the Ngaruawahia Golf Club.

Appendix A

Crash Listings and Collision Diagrams

Ngaruawahia crash listing

First Street	ID Second Street III or landmark Distance IRI	Crash Number	Date	Day Time	Description of Events	Crash Factors	Road	Natural	Weather	Junction	Ctrl	Tot Inj
			DD/MM/YYYY	DD HHMM		(ENV = Environmental factors)		Light				F S M A E I T R N
ALBERT PLACE	150S HAVELOCK ROAD	201358577	24/11/2013	Sun 1730	CAR1 NBD on ALBERT PLACE lost control turning right, CAR1 hit Fence, Parked Vehicle on right hand bend	CAR1 alcohol test above limit or test refused, lost control under heavy acceleration, attention diverted by passengers ENV: entering or leaving private house / farm	Wet	Overcast	Fine	Driveway	Nil	
DURHAM ST	20N ELLERY ST	2944715	06/12/2009	Sun 1813	CAR1 SBD on DURHAM ST lost control; went off road to right, CAR1 hit Fence	CAR1 alcohol test result unknown	Dry	Overcast	Fine	Unknown	Nil	
DURHAM ST	I HERSCHEL ST	2939840	10/06/2009	Wed 1000	CAR1 NBD on DURHAM ST lost control turning left, CAR1 hit Fence	CAR1 too fast entering corner, lost control under heavy acceleration	Wet	Overcast	Light Rain	Roundabout	Give Way Sign	
DURHAM ST	I NEWTON ST	201301800	24/02/2013	Sun 2025	CAR1 and CYCLIST2 (Age 7) both EBD on NEWTON ST and turning; collided	CAR1 alcohol test above limit or test refused, too far left/right CYCLIST2 too far left/right, riding in insecure position	Dry	Dark	Fine	T Type Junction	Give Way Sign	1 1
ELLERY ST	I HERSCHEL ST	2903498	03/06/2009	Wed 1749	CAR2 turning right hit by oncoming CAR1 EBD on ELLERY ST	CAR1 alcohol test above limit or test refused, CAR2 failed to give way when turning to non-turning traffic, didnt see/look when required to give way to traffic from another direction	Dry	Dark	Fine	X Type Junction	Give Way Sign	1
ELLERY ST	I HERSCHEL ST	201005630	11/11/2010	Thu 2156	CAR1 SBD on ELLERY ST lost control; went off road to left, CAR1 hit House Or Bldg, Kerb, Parked Vehicle	CAR1 alcohol test above limit or test refused, lost control	Dry	Dark	Fine	X Type Junction	Give Way Sign	2
ELLERY ST	I HERSCHEL ST	201304419	16/09/2013	Mon 1350	CAR1 WBD on ELLERY ST hit CAR2 crossing at right angle from right	CAR2 failed to give way at give way sign, didnt see/look when required to give way to traffic from another direction	Dry	Overcast	Fine	X Type Junction	Give Way Sign	1
ELLERY ST	I HERSCHEL ST	2901254	04/01/2009	Sun 1953	CAR1 EBD on ELLERY ST hit VAN2 crossing at right angle from right	CAR1 alcohol test above limit or test refused, VAN2 failed to give way at give way sign	Dry	Bright	Fine	X Type Junction	Give Way Sign	1
GALILEO ST	50S MARTIN ST	2941102	25/08/2009	Tue 1720	SUV1 NBD on GALILEO ST changing lanes to left hit CAR2	SUV1 cut in after overtaking, intimidating driving, intentional collision	Wet	Overcast	Fine	Unknown	N/A	
GEORGE ST	30N RIVER ROAD	201231018	29/03/2012	Thu 0000	CAR1 SBD on GEORGE ST lost control; went off road to left, CAR1 hit Post Or Pole	CAR1 intentional collision, evading enforcement, stolen vehicle emergency vehicle attending	Dry	Dark	Fine	Unknown	N/A	
HAKARIMATA ROAD	1620N BROWNLEE AVENUE	201002323	25/03/2010	Thu 0125	CAR1 NBD on HAKARIMATA ROAD lost control turning left, CAR1 hit Post Or Pole, Ditch	CAR1 too fast entering corner, lost control when turning ENV: road slippery (rain)	Wet	Dark	Light Rain	Unknown	N/A	1 1
HAKARIMATA ROAD	50S BROWNLEE AVENUE	201003280	29/06/2010	Tue 2018	CAR1 NBD on HAKARIMATA ROAD lost control turning left, CAR1 hit Cliff Bank	CAR1 lost control when turning, new driver showed inexperience ENV: road slippery (rain)	Wet	Dark	Light Rain	Unknown	N/A	1
HAKARIMATA ROAD	200N VIEW TERRACE	201330317	27/01/2013	Sun 0200	CAR1 NBD on HAKARIMATA ROAD lost control turning left, CAR1 hit Other	CAR1 alcohol suspected, too fast entering corner, lost control when turning	Dry	Dark	Fine	Unknown	N/A	
HAKARIMATA ROAD	430N WAITANGA ROAD	201330646	17/01/2013	Thu 0400	CAR1 SBD on HAKARIMATA ROAD lost control; went off road to left, CAR1 went Over Bank, Water/River	CAR1 lost control when turning ENV: road slippery (loose material on seal)	Unkno	Dark	Unknown	Unknown	N/A	
HAVELOCK ROAD	50E JACKSON ST	2945023	18/11/2009	Wed 0850	CAR1 SBD on HAVELOCK ROAD lost control turning right, CAR1 hit Fence on right hand bend	ENV: road slippery (rain)	Wet	Overcast	Light Rain	Unknown	Nil	
HAVELOCK ROAD	90E JACKSON ST	201334763	14/06/2013	Fri 2035	VAN1 EBD on HAVELOCK ROAD hit rear end of VAN2 stopped/moving slowly	VAN1 intimidating driving, intentional collision ENV: fog or mist	Wet	Dark	Mist	T Type Junction	Give Way Sign	
HAVELOCK ROAD	I JACKSON ST	201336712	27/07/2013	Sat 2204	CAR1 EBD on HAVELOCK ROAD missed inters or end of road, CAR1 hit Fence	CAR1 alcohol suspected, too fast entering corner, lost control when turning	Dry	Dark	Fine	T Type Junction	Give Way Sign	

First Street	Distance (R)	ID Second Street II or landmark	Crash Number	Date	Day Time	Description of Events	Crash Factors	Road	Natural	Weather	Junction	Ctrl	Tot Inj F S M A B I T R N
				DD/MM/YYYY	DOD HHMM		(ENV = Environmental factors)						
HAVELOCK ROAD		I JACKSON ST	201005176	30/09/2010	Thu 0503	VAN1 SBD on HAVELOCK ROAD hit PEDESTRIAN2 crossing road from right side	PEDESTRIAN2 Intoxicated non-driver control when turning. ENV: slippery, road slippery (rain)	Dry	Dark	Fine	T Type Junction	Give Way Sign	1
HAVELOCK ROAD		50S RAIL XING	2930532	03/01/2009	Sat 1345	CAR1 SBD on HAVELOCK ROAD lost control turning right, CAR1 hit fence on right hand bend	CAR1 alcohol test above limit or test refused, did not stop at flashing red lights (rly xing)	Wet	Overcast	Light Rain	Unknown	N/A	
HAVELOCK ROAD		A RAIL XING	201004123	16/07/2010	Fri 1743	CAR1 NBD on HAVELOCK ROAD hit train, CAR1 hit Train	CAR1 alcohol test above limit or test refused, too fast on straight, lost control	Wet	Dark	Fine	Unknown	Traffic Signal	1
HAVELOCK ROAD		50W SH 39	201202292	03/06/2012	Sun 0030	CAR1 WBD on HAVELOCK ROAD lost control; went off road to right, CAR1 hit Tree	CAR1 alcohol test above limit or test refused, too fast on straight, lost control	Dry	Dark	Fine	Unknown	N/A	3
HERSCHEL ST		I ELLERY ST	2931414	24/01/2009	Sat 1300	CAR1 WBD on ELLERY ST hit CAR2 crossing at right angle from right	CAR2 failed to give way at give way sign, didnt see/look when visibility limited by roadside features ENV: visibility limited by trees	Dry	Bright	Fine	X Type Junction	Give Way Sign	
HERSCHEL ST		I PRINCES ST	201238956	22/09/2012	Sat 1239	CAR1 NBD on HERSCHEL ST hit rear end of VAN2 stopped/moving slowly	CAR1 following too closely, failed to notice car slowing	Dry	Bright	Fine	Roundabo	Give Way Sign	
HERSCHEL ST		I PRINCESS ST	201241243	02/12/2012	Sun	CAR1 NBD on HERSCHEL ST lost control turning right, CAR1 hit Kerb, Post Or Pole on right hand bend	CAR1 too fast entering corner, lost control when turning. ENV: heavy rain	Wet	Overcast	Heavy Rain	Roundabo	Give Way Sign	
HILLVIEW ST		50S WAIPA ESPLANADE	201324342	03/12/2013	Tue 1718	CAR1 NBD on HILLVIEW ST hit VERB manoeuvring, CAR1 hit Cliff Bank, Fence, Tree	CAR1 didnt see/look behind when reversing/manoeuvring, wrong pedal ENV: entering or leaving private house / farm	Dry	Bright	Fine	Driveway	Nil	1
JACKSON ST		20S PETERS PLACE	201031816	17/03/2010	Wed 1530	CAR1 NBD on JACKSON ST hit rear of CAR2 turning right from left side	CAR1 overtaking vehicle signaling right turn, failed to notice indication of vehicle in front ENV: entering or leaving private house / farm	Dry	Bright	Fine	Driveway	Nil	
JACOBS LANE		A GALBRAITH ST	201358160	20/12/2013	Fri 0130	SUV1 NBD on GALBRAITH ST lost control turning left, SUV1 hit fence	SUV1 lost control when turning	Dry	Dark	Fine	Unknown	Nil	
JESMOND ST		30W NEWCASTLE ST	201038434	03/07/2010	Sat 1100	CAR1 EBD on JESMOND ST hit CAR2 manoeuvring	CAR1 didnt see/look behind when changing lanes, position or direction	Dry	Overcast	Fine	Unknown	Give Way Sign	
JESMOND ST		50E SH 1N	2939655	25/05/2009	Mon 1500	SUV1 EBD on JESMOND ST hit CAR2 manoeuvring	SUV1 didnt see/look behind when reversing/manoeuvring	Dry	Overcast	Fine	Unknown	N/A	
KENT ST		I GEORGE ST	201330224	27/01/2013	Sun 1855	CAR2 turning right hit by oncoming CAR1 NBD on KENT ST	CAR2 alcohol test above limit or test refused, failed to give way when turning to non-turning traffic, didnt see/look when required to give way to traffic from another direction	Dry	Bright	Fine	T Type Junction	Give Way Sign	
LOWER WAIKATO ESPLANADE		220E BANDSTAND ROAD	201239335	11/10/2012	Thu 1120	CAR1 EBD on LOWER WAIKATO ESPLANADE hit parked veh, CAR1 hit Parked Vehicle	CAR1 too far left/right, attention diverted	Dry	Bright	Fine	Unknown	N/A	
MARKET ST		80E SH 1N	201133260	21/04/2011	Thu 1804	TRUCK1 WBD on MARKET ST hit Parked Vehicle while manoeuvring	TRUCK1 alcohol test result unknown, didnt see/look behind when reversing/manoeuvring ENV: entering or leaving specialised liquor outlet	Dry	Dark	Fine	Driveway	N/A	
OLD TAUPIRI ROAD		200W GALBRAITH ST	201030660	14/01/2010	Thu 1832	CAR1 WBD on OLD TAUPIRI ROAD sideswiped by CAR2 turning left	CAR1 misjudged intentions of another party ENV: entering or leaving private house / farm	Dry	Bright	Fine	Driveway	Nil	

First Street	Distance IR	Second Street II or landmark	Crash Number	Date	Day Time	Description of Events	Crash Factors	Road	Natural	Weather	Junction	Ctrl	Tot Inj
				DD/MM/YYYY	DD HHMM		(ENV = Environmental factors)		Light				F S M A E I T R N
OLD TAUPURI ROAD	240S JACOBS LANE		201200115	15/11/2012	Thu 1818	CAR1 NBD on OLD TAUPURI ROAD lost control turning right, CAR1 hit fence on right hand bend	CAR1 alcohol test above limit or test refused, too fast entering corner, lost control when turning, worn tread on tyre	Dry	Overcast	Fine	Unknown	Nll	2 1 2
OLD TAUPURI ROAD	A JACOBS LANE		2901296	30/01/2009	Fri 1734	CAR1 SBD on OLD TAUPURI ROAD lost control, cutting right, CAR1 hit fence, Other on right hand bend	CAR1 alcohol test result unknown, illness with no warning (eg heart attack)	Dry	Bright	Fine	T Type Junction	Nll	1
OLD TAUPURI ROAD	10S NGAERE ST		201005668	28/10/2010	Thu 0100	CAR1 NBD on OLD TAUPURI ROAD lost control turning right, CAR1 hit Kerb, Parked Vehicle, Traffic Sign, SUV2 hit Fence, House Or Bldg on right hand bend	CAR1 alcohol test above limit or test refused, too fast entering corner, lost control when turning	Dry	Dark	Fine	T Type Junction	Nll	1
OLD TAUPURI ROAD	A RAIL XING		201130063	14/01/2011	Fri 1715	CAR1 EBD on OLD TAUPURI ROAD hit TRUCK2 crossing	CAR1 did not see or look for other party until too late TRUCK2 did not see or look for other party until too late	Dry	Bright	Fine	Unknown	Traffic Signal	1
PRINCESS ST	I HERSCHEL ST		201201069	14/01/2012	Sat 0945	CAR1 SBD on HERSCHEL ST hit CYCLIST2 (Age 62) crossing at right angle from right	CAR1 failed to give way at give way sign, attention diverted by other traffic, didnt see/look when required to give way to traffic from another direction	Dry	Bright	Fine	Roundabo	Give Way Sign	1
PRINCESS ST	I HERSCHEL ST		201036136	30/05/2010	Sun 1035	SUV1 NBD on HERSCHEL ST hit VAN2 crossing at right angle from right	SUV1 failed to give way at give way sign, attention diverted by driver, didnt see/look when required to give way to traffic from another direction ENV: dazzling sun	Dry	Bright	Fine	Roundabo	Give Way Sign	1
RIVER ROAD	30E DUKE ST		2941437	30/06/2009	Tue 0100	CAR1 NBD on RIVER ROAD lost control; went off road to left, CAR1 hit Parked Vehicle	CAR1 mental illness (eg depression), intentional collision	Wet	Dark	Fine	Unknown	Nll	1
RIVER ROAD	840S DUKE ST		2901293	08/02/2009	Sun 2355	CAR1 NBD on RIVER ROAD lost control turning left, CAR1 hit Cliff Bank, Ditch	CAR1 too far left/right, lost control when turning	Dry	Dark	Fine	Unknown	N/A	1
RIVER ROAD	I DUKE ST		2932384	02/03/2009	Mon 0820	CAR1 SBD on RIVER ROAD hit SUV2 turning right onto RIVER ROAD from the left	SUV2 failed to give way at stop sign, didnt see/look when required to give way to traffic from another direction	Dry	Bright	Fine	T Type Junction	Stop Sign	1
RIVER ROAD	100S KING ST		201133341	17/01/2011	Mon 1623	CAR1 SBD on RIVER ROAD lost control; went off road to right, CAR1 hit Fence	CAR1 lost control, worn tread on tyre ENV: road slippery (rain)	Wet	Overcast	Light Rain	Unknown	N/A	1
RIVER ROAD	I KING ST		201231184	29/04/2012	Sun 1735	CAR1 NBD on RIVER ROAD lost control turning right, CAR1 hit Kerb, Tree on right hand bend	CAR1 too fast entering corner, lost control under heavy acceleration ENV: road slippery (rain)	Wet	Dark	Light Rain	T Type Junction	Give Way Sign	1
RIVER ROAD	I QUEEN ST		2941107	25/09/2009	Fri 1822	CAR1 SBD on QUEEN ST missed inters or end of road, CAR1 hit Fence, House Or Bldg	CAR1 too fast on straight, new driver showed inexperience ENV: road slippery (rain)	Wet	Dark	Light Rain	T Type Junction	Stop Sign	1
RIVER ROAD	60S REGENT ST		201201964	28/03/2012	Wed 0802	CAR1 SBD on RIVER ROAD hit CYCLIST2 (Age 6) crossing	CYCLIST2 failed to give way, didnt see or look for other party until too late	Dry	Bright	Fine	Unknown	N/A	1
RIVER ROAD	80E SH LN		201135114	17/04/2011	Sun 1730	CAR1 SBD on RIVER ROAD lost control on straight and hit CAR2 head on, CAR2 hit Kerb	CAR1 lost control ENV: road slippery (rain)	Wet	Overcast	Light Rain	Unknown	N/A	1
WAIKATO ESPLANADE	340E BELT ST		2944899	21/11/2009	Sat 1230	CAR1 EBD on WAIKATO ESPLANADE missed inters or end of road, CAR1 hit Fence	CAR1 evading enforcement	Dry	Overcast	Fine	Unknown	Nll	1
WAIKATO ROAD	40N CLARK ROAD		2941106	26/09/2009	Sat 0750	VAN1 NBD on WAIKATO ROAD lost control turning left, VAN1 went Over Bank, Water/River	VAN1 lost control when turning ENV: road slippery (rain)	Wet	Overcast	Light Rain	Unknown	N/A	1
WAIKATO ROAD	10S COENEN ST		2939851	12/08/2009	Wed 1525	OTHER1 NBD on WAIKATO ROAD hit VAN2 angle parking	VAN2 didnt see/look behind when reversing/manoeuvring	Dry	Overcast	Fine	T Type Junction	Nll	1

First Street	Second street or landmark	Crash Number	Date	Day Time	Description of Events	Crash Factors	Road	Natural Light	Weather Junction	Cntrl	Tot Inj F S M A E I T R N
WAINGARO ROAD	I EYRE ROAD	201040476	17/09/2010	Fri 2030	CAR1 EBD on WAINGARO ROAD hit obstruction, CAR1 hit Other	(ENV = Environmental factors)	Wet	Dark	Heavy Rain	Give Way Sign	1
WAINGARO ROAD	40E HAKARIMATA ROAD	201006116	21/12/2010	Tue	SUV1 EBD on WAINGARO ROAD hit rear end of SUV2 stop/slow for queue	SUV1 failed to notice car slowing, failed to notice warning sign	Dry	Bright	Fine	Unknown	N/A
WAINGARO ROAD	2000S HAKARIMATA ROAD	2932376	24/02/2009	Tue 1815	TRUCK1 WBD on WAINGARO ROAD lost control turning left, TRUCK1 hit Kerb, Ditch	TRUCK1 too far left/right, attention diverted by passengers, driver over-reacted	Dry	Bright	Fine	Unknown	N/A
WAINGARO ROAD	I HAKARIMATA ROAD	201241723	09/09/2012	Sun 0240	CAR1 WBD on WAINGARO ROAD lost control turning left, CAR1 hit Guard Rail	CAR1 alcohol suspected, too fast entering corner, lost control when turning ENV: road slippery (rain)	Wet	Dark	Light Rain	Give Way Sign	1
WAINGARO ROAD	140W HERSCHEL ST	201035001	09/05/2010	Sun 0300	CAR1 EBD on WAINGARO ROAD lost control; went off road to left, CAR1 hit Bridge	CAR1 alcohol suspected, lost control	Dry	Dark	Fine	Unknown	N/A
WAINGARO ROAD	I SAMFSON ST	201040256	16/08/2010	Mon 1445	TRUCK1 EBD on SAMFSON ST lost control turning left	TRUCK1 too fast entering corner, lost control when turning	Dry	Bright	Fine	T Type Junction	Nil
WAINGARO ROAD	400W TE PUROA ROAD	201001972	01/03/2010	Mon 2240	CAR1 WBD on WAINGARO ROAD lost control turning right, CAR1 hit Ditch on right hand bend	CAR1 too fast entering corner, lost control when turning	Dry	Dark	Fine	Unknown	Nil
WAINGARO ROAD	400W TE PUROA ROAD	201101451	26/01/2011	Wed 1505	MOTOR CYCLE1 WBD on WAINGARO ROAD hit TRUCK2 doing driveway manoeuvre	MOTOR CYCLE1 suddenly swerved to avoid vehicle, didnt see/look when visibility limited by roadside features TRUCK2 didnt see/look when visibility limited by roadside features ENV: visibility limited by curve, visibility limited by trees, entering or leaving private house / farm	Dry	Bright	Fine	Driveway	N/A
WAINGARO ROAD	500W TE PUROA ROAD	201034242	18/04/2010	Sun 0500	SUV1 EBD on WAINGARO ROAD lost control turning left, SUV1 hit Tree	SUV1 fatigue due to working long hours before driving	Dry	Dark	Fine	Unknown	N/A
WAINGARO ROAD	750W TE PUROA ROAD	2900014	20/01/2009	Tue 1727	MOTOR CYCLE1 WBD on WAINGARO ROAD lost control on curve and hit SUV2 head on, MOTOR CYCLE1 hit Ditch	MOTOR CYCLE1 alcohol not suspected, tested and -ve (Met use only), lost control due to vehicle fault, puncture of blowout	Dry	Bright	Fine	Unknown	Nil
WAINGARO ROAD	1000W TE PUROA ROAD	2932383	04/03/2009	Wed 0735	CAR1 EBD on WAINGARO ROAD lost control; went off road to right, CAR1 hit Cliff Bank, Other	CAR1 attention diverted by driver dazzled by sun/lights ENV: dazzling sun	Dry	Bright	Fine	Unknown	N/A
WAINGARO ROAD	1240W TE PUROA ROAD	201003260	24/03/2010	Wed 1219	CAR1 EBD on WAINGARO ROAD lost control turning left, CAR1 went Over Bank, Post Or Pole, Traffic Sign, Tree	CAR1 too fast entering corner, lost control when turning, new driver showed inexperience, driver over-reacted ENV: heavy rain	Wet	Overcast	Heavy Rain	Unknown	1 1
WAINGARO ROAD	2060W TE PUROA ROAD	2903486	28/02/2009	Sat 1730	CAR1 EBD on WAINGARO ROAD lost control on curve and hit SUV2 head on	CAR1 too fast entering corner, lost control when turning	Wet	Overcast	Light Rain	Unknown	N/A
WAINGARO ROAD	2100W TE PUROA ROAD	201233686	19/06/2012	Tue	CAR1 EBD on WAINGARO ROAD lost control turning left, CAR1 went Over Bank	CAR1 lost control when turning, stolen vehicle	Dry	Dark	Fine	Unknown	N/A
WAINGARO ROAD	2100W TE PUROA ROAD	201234977	04/06/2012	Mon	CAR1 EBD on WAINGARO ROAD lost control turning left, CAR1 went Over Bank	CAR1 lost control when turning, stolen vehicle	Dry	Dark	Fine	Unknown	N/A
WAINGARO ROAD	2100W TE PUROA ROAD	201203746	31/07/2012	Tue 1655	CAR1 WBD on WAINGARO ROAD lost control turning right, CAR1 hit Fence on right hand bend	CAR1 alcohol test above limit or test refused, lost control when turning, impaired ability due to old age	Dry	Twilight	Fine	Unknown	N/A
WAINGARO ROAD	2100W TE PUROA ROAD	201330221	29/01/2013	Tue 1800	CAR1 EBD on WAINGARO ROAD lost control turning left	CAR1 alcohol suspected, too fast entering corner, lost control when turning, stolen vehicle	Dry	Bright	Fine	Unknown	N/A

First Street	Second street or landmark	Crash Number	Date	Day Time	Description of Events	Crash Factors	Road	Natural	Weather	Junction	Ctrl	Tot Inj
	Distance [R]		DD/MM/YYYY	DDD HMM		(ENV = Environmental factors)		Light				F S M A E I T R N
WALLBANK ROAD	15W SH 1N	201038698	17/06/2010	Tue 1922	CAR1 NBD on WALLBANK ROAD hit train, CAR1 hit Ditch, OTHER2 hit Train	CAR1 too far left/right, parked or stopped not clear of rail crossing ENV: heavy rain	Wet	Dark	Heavy Rain	Unknown	Stop Sign	
WESTGATE ST	100E DURHAM ST	2901228	21/01/2009	Wed 1845	MOTOR CYCLE1 NBD on WESTGATE ST lost control, went off road to left, MOTOR CYCLE1 hit Kerb, Post Or Pole, Other	MOTOR CYCLE1 lost control, evading enforcement	Dry	Bright	Fine	Unknown	N/A	1
PRINCESS ST	I GREAT SOUTH ROAD	201234512	15/06/2012	Fri 1734	CAR1 and CAR2 both EBD on GREAT SOUTH ROAD and turning; collided	CAR1 too far left/right CAR2 too far left/right	Dry	Dark	Fine	Roundabout	Give Way Sign	
1N//0	I NEWCASTLE ST	201036138	28/05/2010	Fri 0350	CAR1 WBD on NEWCASTLE ST hit CAR2 crossing at right angle from right	CAR1 failed to give way at give way sign, inattentive; failed to notice intersection or its stop/give way control, overtook/migrant driver failed to adjust to NZ road rules and road conditions ENV: road slippery (rain)	Wet	Dark	Light Rain	X Type Junction	Give Way Sign	
1N//0	I NEWCASTLE ST	201139160	16/11/2011	Wed 0807	CAR2 turning right hit by oncoming SUV1 WBD on NEWCASTLE ST	SUV1 misjudged intentions of another party CAR2 failed to give way when turning to non-turning traffic, misjudged intentions of another party ENV: road slippery (rain)	Wet	Overcast	Light Rain	X Type Junction	Give Way Sign	
1N//0	I NORTH ST	2904075	02/06/2009	Sun 1009	CAR1 SBD on NORTH ST lost control on curve and hit CAR2 head on	CAR1 alcohol test above limit or test refused, lost control when turning, showing off wheelspins etc	Dry	Bright	Fine	T Type Junction	Give Way Sign	1 2
1N//0	I PRINCESS ST	2935924	10/05/2009	Sun 0100	CAR1 EBD on PRINCESS ST hit TAXI2 crossing at right angle from right	CAR1 failed to give way at give way sign	Wet	Dark	Heavy Rain	X Type Junction	Give Way Sign	
1N//0	I PRINCESS ST	201037146	29/06/2010	Tue 1815	SUV1 EBD on PRINCESS ST hit CAR2 crossing at right angle from right	SUV1 failed to give way at give way sign, inattentive; failed to notice intersection or its stop/give way control, attention diverted by navigation device	Dry	Dark	Fine	X Type Junction	Give Way Sign	
1N//0	I PRINCESS ST	201044273	06/12/2010	Mon 1427	CAR1 EBD on PRINCESS ST hit CAR2 crossing at right angle from right	CAR1 failed to give way at give way sign, didnt see/look when required to give way to traffic from another direction	Dry	Bright	Fine	X Type Junction	Give Way Sign	
1N//0	I RIVER ROAD	201134945	16/04/2011	Sat 2300	CAR1 WBD on RIVER ROAD missed inters or end of road, CAR1 hit Cliff Bank, Other	CAR1 alcohol test above limit or test refused, too fast on straight	Wet	Dark	Light Rain	T Type Junction	Stop Sign	
1N//0	I RIVER ROAD	201035002	09/05/2010	Sun 2355	CAR1 NBD on RIVER ROAD missed inters or end of road, CAR1 hit Post Or Pole	CAR1 alcohol test above limit or test refused, too fast on straight, inattentive, worn tread on tyre	Dry	Dark	Fine	T Type Junction	Stop Sign	3
1N/519/12.32	150N WALLBANK ROAD	201137114	09/08/2011	Tue 1557	CAR1 NBD on SH 1N lost control; went off road to left, CAR1 hit Ditch	CAR1 fatigue due to lack of sleep	Dry	Overcast	Fine	Unknown	N/A	
1N/519/12.412	60N KELM ROAD	201231175	11/05/2012	Fri 0330	CAR1 NBD on SH 1N lost control; went off road to left, CAR1 hit Ditch	CAR1 fatigue (drowsy, tired, fell asleep)	Dry	Dark	Fine	Unknown	N/A	
1N/519/12.456	15N KELM ROAD	2901768	20/02/2009	Fri 1538	CAR1 SBD on SH 1N lost control on straight and hit CAR2 head on	CAR1 lost control ENV: road slippery (rain)	Wet	Overcast	Light Rain	Unknown	N/A	
1N/519/12.492	20S KELM ROAD	201200108	31/10/2012	Wed 0518	TRUCK1 NBD on SH 1N hit PEDESTRIAN2 (Age 61) crossing road from right side	PEDESTRIAN2 crossing heedless of traffic	Dry	Dark	Fine	Unknown	Nil	1
STARR ROAD	I 1N/519/12.901	2936845	08/06/2009	Mon 1500	load or trailer from SUV1 NBD on STARR ROAD SUV1 hit Ditch	SUV1 inattentive, misjudged speed, distance or position	Dry	Bright	Fine	T Type Junction	Give Way Sign	

First Street	Second Street or Landmark	Crash Number	Date	Day Time	Description of Events	Crash Factors	Road	Natural	Weather	Junction	Ctrl	Tot Inj
	Distance (R)		DD/MM/YYYY	DD HHMM		(ENV = Environmental factors)		Light				F S M A E I T R N
1N/519/13.001	100S STARR ROAD	2904554	24/09/2009	Thu 2245	VAN1 SBD on SH IN lost control; went off road to right, VAN1 hit Ditch	VAN1 alcohol test above limit or test refused, lost control under heavy acceleration ENV: road slippery (rain)	Wet	Dark	Light Rain	Unknown	N/A	1
1N/519/13.201	300S STARR ROAD	201304867	30/08/2013	Fri 2150	CAR1 NBD on SH IN lost control; went off road to left, CAR1 hit Ditch	CAR1 alcohol test above limit or test refused, too far left/right, emotionally upset/road rage	Dry	Dark	Fine	Unknown	N/A	1
1N/519/13.301	400S STARR ROAD	201035003	01/05/2010	Sat 1130	CAR1 SBD on SH IN lost control; went off road to left, CAR1 hit Cliff Bank, Ditch	CAR1 following too closely, suddenly diverted to avoid vehicle, attention diverted by cigarette etc ENV: heavy rain	Wet	Overcast	Heavy Rain	Unknown	N/A	
1N/519/13.339	250N EDWARD ST	201357352	28/11/2013	Thu 1500	CAR1 NBD on SH IN hit rear of CAR2 turning right from centre line	CAR1 attention diverted by cigarette etc ENV: heavy rain, entering or leaving private house / farm	Wet	Overcast	Heavy Rain	Driveway	Nil	
1N/519/13.399	190N EDWARD ST	201236445	20/07/2012	Fri 1550	VAN1 NBD on SH IN hit rear of SUV2 turning right from centre line	VAN1 failed to notice indication of vehicle in front ENV: entering or leaving private house / farm	Dry	Bright	Fine	Driveway	N/A	
1N/519/13.433	800N MARKET ST	201239080	11/10/2012	Thu 1757	TRUCK1 SBD on SH IN changing lanes to left hit CAR2	TRUCK1 didnt see/look behind when changing lanes, position or direction	Dry	Bright	Fine	Unknown	Nil	
1N/519/13.569	20N EDWARD ST	201002434	26/02/2010	Fri 1740	CAR2 turning right hit by oncoming MOTOR CYCLE1 SBD on SH IN	CAR2 failed to give way when turning to non-turning traffic ENV: entering or leaving specialised liquor outlet	Dry	Bright	Fine	Driveway	Nil	1
1N/519/13.604	15S EDWARD ST	2944558	20/11/2009	Fri 0210	CAR1 SBD on SH IN hit CAR2 reversing along road	CAR2 alcohol test above limit or test refused, intentional collision, evading enforcement	Dry	Dark	Fine	Unknown	Nil	
1N/519/13.736	I RIVER ROAD	201231530	26/04/2012	Thu 1535	CAR1 SBD on SH IN hit CAR2 merging from the left	CAR2 failed to give way at stop sign, didnt see/look when visibility obstructed by other vehicles	Dry	Overcast	Fine	T Type Junction	Stop Sign	
1N/519/13.736	I RIVER ROAD	2945158	04/07/2009	Sat 2315	CAR1 SBD on SH IN hit CAR2 turning right onto SH IN from the left	CAR2 did not stop at stop sign	Wet	Dark	Light Rain	T Type Junction	Stop Sign	
1N/519/13.736	I RIVER ROAD	201330333	09/02/2013	Sat 1840	VAN1 NBD on SH IN turning right hit CAR2 turning right into SH IN	CAR2 failed to give way at stop sign, didnt see/look when required to give way to traffic from another direction	Dry	Bright	Fine	T Type Junction	Stop Sign	
1N/519/13.736	I RIVER ROAD	201104461	24/08/2011	Wed 1450	CAR2 turning right hit by oncoming CAR1 SBD on SH IN	CAR2 failed to give way when turning to non-turning traffic, impaired ability due to old age	Dry	Overcast	Fine	T Type Junction	Stop Sign	1 2
1N/519/13.736	I RIVER ROAD	201201116	12/01/2012	Thu 0427	CAR1 NBD on SH IN missed inters or end of road, CAR1 hit Post Or Pole	CAR1 fatigue (drowsy, tired, fell asleep)	Dry	Dark	Fine	T Type Junction	Stop Sign	1
1N/519/13.816	100N OLD TAUPIRI ROAD	201330256	16/01/2013	Wed 1942	CAR1 SBD on SH IN lost control but did not leave the road, CAR1 hit Traffic Island	CAR1 fatigue due to long trip	Dry	Bright	Fine	Unknown	N/A	
1N/519/13.841	700N PRINCESS ST	201239089	15/10/2012	Mon 0829	CAR1 NBD on SH IN hit rear end of TRUCK2 stop/slow for queue	CAR1 following too closely, attention diverted by other traffic CAR3 following too closely	Dry	Bright	Fine	Unknown	Nil	
1N/519/13.866	50N OLD TAUPIRI ROAD	201325651	15/12/2013	Sun 0515	CAR1 SBD on SH IN lost control; went off road to left, CAR1 hit Guard Rail	CAR1 too far left/right, fatigue (drowsy, tired, fell asleep)	Dry	Dark	Fine	Unknown	Nil	1
1N/519/13.916	I OLD TAUPIRI ROAD	201139353	08/12/2011	Thu 0956	TRUCK1 NBD on SH IN hit CAR2 merging from the left	CAR2 alcohol test below limit, did not stop at stop sign, didnt see/look when required to give way to traffic from another direction	Dry	Bright	Fine	T Type Junction	Stop Sign	
1N/519/13.916	I REGENT ST	201339132	05/10/2013	Sat 0125	TRUCK1 NBD on SH IN hit CAR2 turning from same direction of travel, CAR2 hit Traffic Sign	CAR2 didnt see/look behind when changing lanes, position or direction	Dry	Dark	Fine	X Type Junction	Stop Sign	

First Street	ID Second street or Landmark Distance R	Crash Number	Date DD/MM/YYYY	Day Time DDD HMM	Description of Events	Crash Factors (ENV = Environmental factors)	Road	Natural Light	Weather Junction	Ctrl	Tot Inj F S M A E I T R N
1N/519/13.916	I REGENT ST	201001624	22/01/2010	Fri 1042	SUV1 NBD on SH IN hit WHEELED PEDESTRIAN2 (Age 67) crossing road from right side	WHEELED PEDESTRIAN2 misjudged speed, distance or position, impaired ability due to old age	Dry	Overcast	Fine	X Type Junction Sign	1
1N/519/13.926	10S REGENT ST	201134944	23/05/2011	Mon 1250	CAR1 SBD on SH IN lost control; went off road to left, CAR1 hit Guard Rail	CAR1 illness with no warning (eg heart attack)	Dry	Bright	Fine	T Type Junction	Nil
1N/519/13.936	20S REGENT ST	201301801	22/02/2013	Fri 1120	CAR1 SBD on SH IN lost control but did not leave the road, CAR1 hit Guard Rail	CAR1 illness with no warning (eg heart attack)	Dry	Bright	Fine	Unknown N/A	1
1N/533/0.048	100S REGENT ST	201241787	10/12/2012	Mon 0519	VAN1 SBD on SH IN lost control; went off road to left, VAN1 hit Bridge	VAN1 too far left/right, fatigue (drowsy, tired, fell asleep)	Dry	Twilight	Fine	Unknown N/A	N/A
1N/533/0.057	A WAIKATO RIV BR	201232635	22/05/2012	Tue 0512	CAR1 SBD on SH IN lost control but did not leave the road, CAR1 hit Fence	CAR1 fatigue (drowsy, tired, fell asleep)	Dry	Dark	Fine	Unknown N/A	N/A
1N/533/0.145	120N MARKET ST	2902862	16/04/2009	Thu 0955	VAN1 NBD on SH IN hit PEDESTRIAN2 (Age 11) crossing road from left side	PEDESTRIAN2 crossing heedless of traffic	Dry	Bright	Fine	Unknown Nil	1
1N/533/0.185	80N MARKET ST	201130189	13/01/2011	Thu 0913	TRUCK1 SBD on SH IN changing lanes to left; hit CAR2 CAR2 hit Guard Rail	TRUCK1 didnt see/look behind when changing lanes, position or direction	Dry	Bright	Fine	Unknown Nil	Nil
1N/533/0.215	50N MARKET ST	201238307	10/08/2012	Fri 0030	CAR1 NBD on SH IN hit parked veh, CAR1 hit Parked Vehicle, Roadworks	CAR1 alcohol test above limit or test refused, failed to notice roadworks signs ENV: road slippery (rain), road surface under construction or maintenance	Wet	Dark	Light Rain	Unknown N/A	N/A
1N/533/0.235	30N MARKET ST	201038013	14/07/2010	Wed 0956	CAR1 SBD on SH IN hit rear end of SUV2 stop/slow for PEDESTRIAN	CAR1 following too closely, failed to notice car slowing	Dry	Bright	Fine	Unknown N/A	N/A
1N/533/0.245	20N MARKET ST	2905640	16/10/2009	Fri 1500	CAR1 SBD on SH IN hit rear end of CAR2 stop/slow for queue	CAR1 failed to notice car slowing	Dry	Overcast	Fine	Unknown N/A	1
1N/533/0.26	5N MARKET ST	2902003	13/02/2009	Fri 1702	CAR1 SBD on SH IN hit CYCLIST2 (Age 11) crossing at right angle from right	CYCLIST2 failed to give way entering roadway not from driveway or intersection, didnt see/look when required to give way to traffic from another direction	Dry	Bright	Fine	T Type Junction Sign	1
1N/533/0.265	I MARKET ST	201031804	06/03/2010	Sat 2139	CAR2 turning right hit by oncoming CAR1 SBD on SH IN	CAR2 failed to give way when turning to non-turning traffic, didnt see/look when required to give way to traffic from another direction	Dry	Dark	Fine	T Type Junction	Nil
1N/533/0.273	300N PRINCESS ST	201236004	08/06/2012	Fri 1753	CAR1 NBD on SH IN hit rear end of CAR2 stop/slow for queue	CAR1 attention diverted, new driver showed inexperience	Dry	Dark	Fine	Unknown Nil	Nil
1N/533/0.28	15S MARKET ST	201330223	26/01/2013	Sat 1140	CAR1 SBD on SH IN hit rear end of CAR2 stopped/moving slowly	CAR1 attention diverted by cell phone	Dry	Bright	Fine	Unknown N/A	N/A
1N/533/0.29	25S MARKET ST	201141726	14/11/2011	Mon 1643	CAR1 NBD on SH IN hit rear end of TRUCK2 stop/slow for queue	CAR1 attention diverted by cigarette etc	Dry	Bright	Fine	Unknown Nil	Nil
1N/533/0.295	30S MARKET ST	2939988	08/06/2009	Mon 1155	OTHER1 NBD on SH IN hit rear end of OTHER2 stop/slow for PEDESTRIAN	OTHER1 following too closely OTHER2 suddenly braked	Dry	Bright	Fine	Unknown Nil	Nil
1N/533/0.315	50S MARKET ST	201032973	08/04/2010	Thu 2118	CAR1 SBD on SH IN hit rear end of CAR2 stop/slow for obstruction	CAR1 alcohol test above limit or test refused	Dry	Dark	Fine	Unknown Nil	Nil
1N/533/0.336	I WAINGARO ROAD	201134943	13/05/2011	Fri 1250	VAN1 NBD on SH IN hit CAR2 turning right onto SH IN from the left	CAR2 failed to give way at give way sign, didnt see/look when required to give way to traffic from another direction	Dry	Bright	Fine	T Type Junction Sign	Give Way Sign
1N/533/0.373	200N NEWCASTLE ST	201301211	01/02/2013	Fri 1535	CAR1 NBD on SH IN hit PEDESTRIAN2 (Age 12) crossing road from left side	PEDESTRIAN2 crossing road, running heedless of traffic	Dry	Bright	Fine	Unknown N/A	1

First Street	Second street or Landmark Distance (R)	Crash Number 	Date DD/MM/YYYY	Day Time DD HHMM	Description of Events	Crash Factors (ENV = Environmental factors)	Road 	Natural Light	Weather Junction	Contrl	Tot Inj F S M A E I T R N	
1N/533/0.404	20N JESMOND ST	201104527	29/08/2011	Mon 1509	CAR1 SBD on SH IN lost control on straight and hit CAR2 head on, CAR1 hit Guard Rail, Traffic Island	CAR1 fatigue (drowsy, tired, fell asleep)	Dry	Bright	Fine	Unknown	N/A	1
1N/533/0.444	20S JESMOND ST	201103604	16/06/2011	Thu 1515	CAR1 NBD on SH IN hit CYCLIST2 (Age 9) crossing	CAR1 did not see or look for other party until too late. CYCLIST2 failed to give way entering roadway not from driveway or intersection	Dry	Overcast	Fine	Unknown	N/A	1
1N/533/0.474	50S JESMOND ST	2902686	04/04/2009	Sat 1541	SUV1 NBD on SH IN hit CYCLIST2 (Age 12) crossing at right angle from right	SUV1 alcohol test above limit or test refused. CYCLIST2 cyclist riding on ped xing or ped signals, failed to give way entering roadway not from driveway or intersection. ENV: entering or leaving other non-commercial	Dry	Bright	Fine	Driveway	Nil	1
1N/533/0.523	50N NEWCASTLE ST	201339134	11/10/2013	Fri 0920	SUV1 SBD on SH IN hit rear end of TRUCK2 stop/slow for PEDESTRIAN	SUV1 following too closely	Wet	Overcast	Light Rain	Unknown	Nil	
1N/533/0.523	50N PRINCESS ST	201001514	12/01/2010	Tue 2100	CAR1 NBD on SH IN hit rear end of CAR2 stop/slow for PEDESTRIAN	CAR1 following too closely	Dry	Dark	Fine	Unknown	Nil	1
1N/533/0.543	30S PRINCESS ST	201030636	09/01/2010	Sat 1140	CAR1 NBD on SH IN hit rear end of CAR2 stop/slow for PEDESTRIAN	CAR1 attention diverted by other traffic	Dry	Bright	Fine	X Type Junction	Give Way Sign	
1N/533/0.558	15N NEWCASTLE ST	2941108	25/09/2009	Fri	CAR1 SBD on SH IN hit rear end of CAR2 stop/slow for queue	CAR1 failed to notice car slowing	Dry	Overcast	Fine	Unknown	N/A	
PRINCESS ST	I GREAT SOUTH ROAD	201339444	15/11/2013	Fri 1034	CAR1 NBD on PRINCESS ST hit VERB manoeuvring, CAR1 hit Cliff Bank	CAR1 didnt see/look behind when reversing/manoeuvring	Dry	Bright	Fine	Roundabo	Give Way Sign	
1N/533/0.573	I PRINCESS ST	201137432	27/09/2011	Tue 1843	VAN1 SBD on SH IN hit CAR2 crossing at right angle from right, VAN1 hit traffic sign	CAR2 failed to give way at give way sign, inattentive: failed to notice intersection or its stop/give way control	Dry	Bright	Fine	X Type Junction	Give Way Sign	
1N/533/0.573	I PRINCESS ST	201241986	30/03/2012	Fri 1248	CAR1 NBD on SH IN hit CAR2 U-turning from same direction of travel	CAR2 didnt see/look behind when changing lanes, position or direction, overtook/migrant driver failed to adjust to NZ road rules and road conditions	Dry	Bright	Fine	X Type Junction	Give Way Sign	
1N/533/0.573	I PRINCESS ST	201104466	07/06/2011	Sun 1230	CAR1 NBD on SH IN hit CAR2 crossing at right angle from right	CAR2 failed to give way at give way sign, inattentive: failed to notice intersection or its stop/give way control, attention diverted while trying to find intersection, windscreen or rear window misted/frosted. ENV: heavy rain	Wet	Overcast	Heavy Rain	X Type Junction	Give Way Sign	2
1N/533/0.578	5S NEWCASTLE ST	201358265	29/12/2013	Sun 1155	CAR1 SBD on SH IN hit CAR2 U-turning from same direction of travel	CAR1 too fast for conditions. CAR2 didnt see/look behind when changing lanes, position or direction	Dry	Overcast	Fine	T Type Junction	Nil	
1N/533/0.583	10S NEWCASTLE ST	2943458	30/12/2009	Wed 0355	TRUCK1 SBD on SH IN lost control: went off road to left, TRUCK1 hit Parked Vehicle	TRUCK1 fatigue (drowsy, tired, fell asleep). ENV: road slippery (rain)	Wet	Dark	Light Rain	X Type Junction	Give Way Sign	
1N/533/0.593	20S NEWCASTLE ST	2901767	24/02/2009	Tue 1619	CAR1 NBD on SH IN hit rear end of CAR2 stop/slow for PEDESTRIAN	CAR1 following too closely, failed to notice car slowing	Dry	Bright	Fine	Unknown	N/A	1
1N/533/0.593	20S NEWCASTLE ST	201230019	04/01/2012	Wed 1400	CAR1 SBD on SH IN hit rear end of CAR2 stop/slow for PEDESTRIAN	CAR1 too fast for conditions, driving unfamiliar vehicle. ENV: heavy rain	Wet	Bright	Heavy Rain	Unknown	N/A	
1N/533/0.593	20S PRINCESS ST	201136425	24/07/2011	Sun 1118	SUV1 SBD on SH IN hit CAR2 parking/unparking	SUV1 inattentive. CAR2 didnt see/look behind when pulling out from parked position. ENV: Foad slippery (rain)	Wet	Overcast	Light Rain	X Type Junction	Give Way Sign	
1N/533/0.603	30S NEWCASTLE ST	201330225	26/01/2013	Sat 1250	CAR1 SBD on SH IN hit rear end of CAR2 stop/slow for queue	CAR1 foot slipped or got caught under pedal	Dry	Bright	Fine	Unknown	N/A	

First Street	ID Second street (I) or landmark Distance (R)	Crash Number	Date	Day Time	Description of Events	Crash Factors	Road	Natural	Weather Junction	Ctrl	Tot Inj F S M A E I T R N
1N/533/0.603	30S NEWCASTLE ST	2943353	20/10/2009	Tue 0819	SUV1 NBD on SH IN hit CAR2 parking/unparking		Dry	Overcast	Fine	Unknown	N/A
1N/533/0.615	35S MARKET ST	201142206	07/12/2011	Wed 1912	CAR1 SBD on SH IN hit rear end of CAR2 stop/slow for queue	CAR2 didnt see/look behind when pulling out from parked position	Dry	Overcast	Fine	Unknown	Nil
1N/533/0.623	50S PRINCESS ST	2935914	26/05/2009	Tue 1735	CAR1 NBD on SH IN hit rear end of CAR2 stop/slow for queue	CAR1 too fast on straight, following too closely	Dry	Dark	Fine	Unknown	Nil
1N/533/0.623	50S PRINCESS ST	201138044	23/10/2011	Sun 1258	VAN1 NBD on SH IN hit rear end of CAR2 stop/slow for PEDESTRIAN	VAN1 failed to notice car slowing, attention diverted	Dry	Bright	Fine	Unknown	N/A
1N/533/0.633	60S PRINCESS ST	201036078	06/06/2010	Sun 1144	CAR1 SBD on SH IN hit rear end of CAR2 stop/slow for queue	CAR1 failed to notice car slowing, attention diverted ENV: road slippery (rain)	Wet	Overcast	Light Rain	Unknown	N/A
1N/533/0.653	80S NEWCASTLE ST	201001517	22/01/2010	Fri 2020	TRUCK1 SBD on SH IN hit rear end of CAR2 stop/slow for queue	TRUCK1 failed to notice car slowing	Dry	Twilight	Fine	Unknown	Nil
1N/533/0.653	80S NEWCASTLE ST	2936086	20/05/2009	Wed 1440	SUV1 NBD on SH IN hit Vehicle while manoeuvring	SUV1 didnt see/look behind when reversing/manoeuvring	Dry	Bright	Fine	Unknown	Nil
1N/533/0.653	80S PRINCESS ST	201101430	09/02/2011	Wed 1001	MOTOR CYCLE1 NBD on SH IN hit TRUCK2 merging from the right	MOTOR CYCLE1 suddenly swerved to avoid vehicle TRUCK2 failed to give way at driveway, didnt see/look when required to give way to traffic from another direction ENV: entering or leaving shopping complex	Dry	Bright	Fine	Driveway	N/A
1N/533/0.673	100S NEWCASTLE ST	201004187	23/01/2010	Sat 0155	CAR1 SBD on SH IN hit rear end of CYCLIST2 (Age 19) stopped/moving slowly	CAR1 inattentive CYCLIST2 cyclist or m/cyclist wearing dark clothing	Dry	Dark	Fine	Unknown	N/A
1N/533/0.673	100S PRINCESS ST	201002303	28/03/2010	Sun 2035	CAR1 NBD on SH IN hit rear end of CAR2 stop/slow for PEDESTRIAN	CAR1 failed to notice car slowing	Dry	Dark	Fine	Unknown	N/A
1N/533/0.673	100S PRINCESS ST	201141793	15/11/2011	Tue 1439	TRUCK1 SBD on SH IN changing lanes to left hit CAR2	TRUCK1 didnt see/look behind when changing lanes, position or direction, fatigue due to long trip	Dry	Bright	Fine	Unknown	Nil
1N/533/0.715	30N MARTIN ST	201336711	18/08/2013	Sun 1846	CAR1 NBD on SH IN hit rear end of CAR2 stop/slow for PEDESTRIAN	CAR1 following too closely	Dry	Dark	Fine	Unknown	N/A
1N/533/0.73	15N MARTIN ST	201042968	24/10/2010	Sun 1530	CAR1 SBD on SH IN hit CAR2 parking/unparking	CAR1 too fast on straight CAR2 alcohol test below limit, didnt see/look behind when pulling out from parked position	Dry	Bright	Fine	Unknown	N/A
1N/533/0.745	I MARTIN ST	2901281	02/01/2009	Fri 1527	CAR2 turning right hit by oncoming SUV1 SBD on SH IN	CAR2 failed to give way when turning to non-turning traffic, didnt see/look when required to give way to traffic from another direction	Dry	Bright	Fine	T Type Junction	Give Way Sign
1N/533/0.755	10S MARTIN ST	201032979	22/02/2010	Mon 0845	CAR1 SBD on SH IN hit rear end of CAR2 stop/slow for queue	CAR1 following too closely CAR3 suddenly swerved to avoid vehicle	Dry	Bright	Fine	T Type Junction	Nil
1N/533/0.765	20S MARTIN ST	2941434	23/08/2009	Sun 0014	CAR1 SBD on SH IN hit rear end of CAR2 stop/slow for obstruction	CAR1 alcohol test above limit or test refused, failed to notice car slowing, attention diverted	Dry	Dark	Fine	Unknown	Nil
1N/533/0.765	20S MARTIN ST	2943354	18/11/2009	Wed 0725	SUV1 SBD on SH IN hit CAR2 turning right onto SH IN from the left	CAR2 failed to give way at driveway, didnt see/look when visibility obstructed by other vehicles ENV: road slippery (rain), visibility limited by parked vehicle, entering or leaving service station	Wet	Overcast	Light Rain	Driveway	N/A
1N/533/0.895	20N JORDAN ST	201040798	03/10/2010	Sun 1540	CAR1 NBD on SH IN hit rear end of CAR2 stop/slow for PEDESTRIAN	CAR1 following too closely, attention diverted	Dry	Bright	Fine	Unknown	N/A
1N/533/0.91	5N JORDAN ST	201331451	01/03/2013	Fri 1736	CAR1 NBD on SH IN hit rear end of CAR2 stop/slow for queue	CAR1 failed to notice car slowing, attention diverted by scenery or persons outside vehicle	Dry	Bright	Fine	T Type Junction	Give Way Sign

First Street	ID/ Second street or landmark Distance R	Crash Number	Date DD/MM/YYYY	Day Time DDD HHMM	Description of Events	Crash Factors (ENV = Environmental factors)	Road 	Natural Light	Weather Junction	Ctrl	Tot Inj F S M A E I T R N
1N/533/0.915	I JORDAN ST	201130938	12/01/2011	Wed 1215	CAR1 NBD on SH 1N hit VAN2 U- turning from same direction of travel		Dry	Bright	Fine	T Type Junction	Give Way Sign
1N/533/0.915	I JORDAN ST	2934917	23/04/2009	Thu 1900	CAR1 NBD on SH 1N hit PEDESTRIAN2 crossing road from right side		Dry	Dark	Fine	T Type Junction	Give Way Sign
1N/533/1.015	100S JORDAN ST	201335642	11/07/2013	Thu 0145	CAR1 NBD on SH 1N lost control turning right, CAR1 hit Guard Rail on right hand bend	CAR1 lost control when turning, stolen vehicle	Dry	Dark	Fine	Unknown	N/A
1N/533/1.101	120N ELLERY ST	201039375	26/08/2010	Thu 0345	CAR1 SBD on SH 1N lost control turning right, CAR1 hit House Or Bldg on right hand bend	CAR1 too fast entering corner, lost control when turning, evading enforcement, stolen vehicle ENV: entering or leaving service station	Wet	Dark	Fine	Driveway	N/A
1N/533/1.122	100N ELLERY ST	201135573	24/06/2011	Fri 1434	CAR1 NBD on SH 1N hit CAR2 turning right onto SH 1N from the left	CAR2 failed to give way at driveway, didnt see/look when required to give way to traffic from another direction ENV: road slippery (rain), entering or leaving service station	Wet	Overcast	Light Rain	Driveway	N/A
1N/533/1.122	100N SH 39	201034233	01/04/2010	Thu 0658	CAR1 NBD on SH 1N hit Vehicle while manoeuvring	CAR1 alcohol suspected, didnt see/look behind when reversing/manoeuvring, evading enforcement	Dry	Overcast	Fine	Unknown	N/A
1N/533/1.221	I ELLERY ST	201234015	08/06/2012	Fri 1307	CAR1 NBD on SH 1N hit CAR2 turning right onto SH 1N from the left	CAR2 failed to give way at give way sign, didnt see/look when visibility obstructed by other vehicles ENV: road slippery (rain)	Wet	Overcast	Light Rain	T Type Junction	Give Way Sign
1N/533/1.221	I SH 39	201330222	22/01/2013	Tue 1800	TRUCK1 NBD on SH 1N hit CAR2 merging from the left, CAR2 hit Roadworks	CAR2 failed to give way at give way sign	Dry	Bright	Fine	T Type Junction	Give Way Sign
1N/533/1.221	I SH 39	201040794	13/10/2010	Wed 0845	CAR1 NBD on SH 1N hit CAR2 turning right onto SH 1N from the left	CAR2 failed to give way at give way sign, didnt see/look when required to give way to traffic from another direction	Dry	Overcast	Fine	T Type Junction	Give Way Sign
1N/533/1.221	I SH 39	201139176	02/11/2011	Wed 1751	TRUCK1 NBD on SH 1N hit CAR2 merging from the left	CAR2 failed to give way at give way sign, didnt see/look when required to give way to traffic from another direction	Dry	Bright	Fine	T Type Junction	Give Way Sign
1N/533/1.317	I GALILEO ST	201038479	16/08/2010	Mon 2318	CAR1 NBD on SH 1N hit CAR2 turning right onto SH 1N from the left, CAR1 hit Guard Rail, Post Or Pole	CAR2 failed to give way at give way sign	Wet	Dark	Heavy Rain	T Type Junction	Give Way Sign
1N/533/1.321	100S SH 39	2942226	27/06/2009	Sat 2210	CAR1 NBD on SH 1N lost control turning right, CAR1 hit Post Or Pole on right hand bend	CAR1 alcohol test above limit or test refused ENV: entering or leaving other non-commercial	Dry	Dark	Fine	Driveway	Nil
1N/533/1.453	100W BELT ST	2942593	23/10/2009	Fri 0410	SUV1 NBD on SH 1N lost control: went off road to left, SUV1 hit Post Or Pole	SUV1 alcohol test above limit or test refused, fatigue (drowsy, tired, fell asleep)	Wet	Dark	Fine	Unknown	N/A
1N/533/1.533	20N BELT ST	201230371	31/01/2012	Tue 2218	CAR1 NBD on SH 1N hit PEDESTRIAN2 walking with traffic	PEDESTRIAN2 walking along road not facing oncoming traffic	Dry	Dark	Fine	Unknown	N/A
1N/533/1.558	5E BELT ST	201042969	05/11/2010	Fri 1820	SUV1 NBD on SH 1N lost control: went off road to left, SUV1 hit Post Or Pole, Traffic Sign	SUV1 alcohol test above limit or test refused, fatigue (drowsy, tired, fell asleep)	Dry	Bright	Fine	T Type Junction	Give Way Sign
1N/533/1.601	400N NORTH ST	201201948	17/03/2012	Sat 2030	CAR1 NBD on SH 1N hit rear of CAR2 turning right from centre line	CAR1 misjudged intentions of another party ENV: entering or leaving shopping complex	Dry	Twilight	Fine	Driveway	N/A
1N/533/1.683	130S BELT ST	201004986	01/09/2010	Wed 1800	CAR1 NBD on SH 1N hit PEDESTRIAN2 (Age 14) crossing road from right side	PEDESTRIAN2 crossing heedless of traffic	Dry	Bright	Fine	Unknown	Nil

First Street	ID Second street or landmark Distance R	Crash Number	Date	Day Time	Description of Events	Crash Factors	Road	Natural Light	Weather Junction	Ctrl	Tot Inj F S M A B I T R N
1N/533/1.753	200S BELT ST	201039411	07/06/2010	Mon 1015	CAR1 SBD on SH IN lost control on straight and hit TRUCK2 head on	(ENV = Environmental factors)	Dry	Bright	Fine	Unknown	N/A
1N/533/1.753	200S BELT ST	201205598	11/12/2012	Tue 1740	MOTOR CYCLE1 WBD on SH IN hit CAR2 U-turning from same direction of travel	CAR2 didnt see/look behind when changing lanes, position or direction	Dry	Overcast	Fine	Unknown	1
1N/533/1.773	220E BELT ST	201339427	31/10/2013	Thu 0930	CAR1 SBD on SH IN hit rear of left turning CAR2	CAR1 following too closely ENV: entering or leaving shopping complex	Dry	Bright	Fine	Driveway	N/A
1N/533/1.793	240S BELT ST	2906483	25/12/2009	Fri 1129	CAR1 NBD on SH IN hit rear of CAR2 turning right from centre line	CAR1 failed to notice car slowing, attention diverted by scenery or persons outside vehicle ENV: entering or leaving other commercial	Dry	Overcast	Fine	Driveway	1
1N/533/1.801	200N NORTH ST	201337412	29/06/2013	Sat	CAR1 NBD on SH IN lost control; went off road to right, CAR1 hit Post Or Pole	CAR1 fatigue (drowsy, tired, fell asleep), illness and disability	Dry	Overcast	Fine	Unknown	Nil
1N/533/2.001	I NORTH ST	201335709	21/08/2013	Wed 1030	CAR1 NBD on SH IN hit CAR2 merging from the right	CAR2 failed to give way at give way sign ENV: road slippery (rain)	Wet	Overcast	Light Rain	T Type Junction	Give Way Sign
1N/533/2.101	100S NORTH ST	2940774	01/07/2009	Wed 1338	CAR1 SBD on SH IN hit SUV2 U-turning from same direction of travel	SUV2 didnt see/look behind when changing lanes, position or direction	Dry	Bright	Fine	Unknown	Nil
1N/533/2.116	200N HAVELOCK ROAD	201302589	27/03/2013	Wed 0720	VAN1 SBD on SH IN lost control; went off road to left	VAN1 fatigue (drowsy, tired, fell asleep)	Dry	Bright	Fine	Unknown	N/A
1N/533/2.338	20W HAVELOCK ROAD	201136400	03/07/2011	Sun 1830	CAR2 EBD on SH IN opened door into path of another party, TRUCK1 hit Vehicle	CAR2 attention diverted, didnt see/look behind when opening door or leaving vehicle	Dry	Dark	Fine	Unknown	N/A
1N/533/2.358	I HAVELOCK ROAD	2930500	10/01/2009	Sat 2203	CAR1 NBD on SH IN hit VAN2 turning right onto SH IN from the left	VAN2 failed to give way at give way sign, didnt see/look when visibility obstructed by other vehicles	Wet	Dark	Light Rain	T Type Junction	Give Way Sign
1N/533/2.358	I HAVELOCK ROAD	2906289	30/09/2009	Wed 1635	CAR1 NBD on SH IN hit VAN2 turning right onto SH IN from the left	VAN2 failed to give way at give way sign, attention diverted by other traffic, didnt see/look when required to give way to traffic from another direction	Wet	Bright	Heavy Rain	T Type Junction	Give Way Sign
1N/533/2.358	I HAVELOCK ROAD	201134638	21/01/2011	Fri 1710	CAR1 NBD on SH IN hit CAR2 turning right onto SH IN from the left	CAR2 failed to give way at give way sign	Dry	Overcast	Fine	T Type Junction	Give Way Sign
1N/533/2.358	I HAVELOCK ROAD	201133200	31/03/2011	Thu 1943	CAR1 SBD on SH IN hit CAR2 merging from the right, CAR1 hit Fence, Phone Box Etc.	CAR2 failed to give way at give way sign, didnt see/look when required to give way to traffic from another direction	Dry	Dark	Fine	T Type Junction	Give Way Sign
1N/533/2.36	I HAVELOCK ROAD	201303556	11/01/2013	Fri 1519	CAR1 NBD on SH IN hit CAR2 turning right onto SH IN from the left	CAR2 failed to give way at give way sign, didnt see/look when visibility obstructed by other vehicles	Dry	Bright	Fine	T Type Junction	Give Way Sign
1N/533/2.36	I HAVELOCK ROAD	201201114	29/01/2012	Sun 0958	CAR1 NBD on SH IN hit CAR2 turning right onto SH IN from the left	CAR2 failed to give way at give way sign, didnt see/look when required to give way to traffic from another direction	Dry	Bright	Fine	T Type Junction	Give Way Sign
1N/533/2.486	100S THOMAS ST	201204831	16/10/2012	Tue 1516	CAR1 SBD on SH IN lost control on straight and hit CAR2 head on	CAR1 alcohol test below limit, illness with no warning (eg heart attack)	Dry	Bright	Fine	Unknown	N/A
1N/533/2.687	15N CROALL CRESCENT	201357432	04/12/2013	Wed 0741	TRUCK1 SBD on SH IN lost control; went off road to left, TRUCK1 hit Fence, Traffic Island, Traffic Sign, Tree	TRUCK1 too far left/right, fatigue (drowsy, tired, fell asleep)	Wet	Overcast	Light Rain	Unknown	Nil

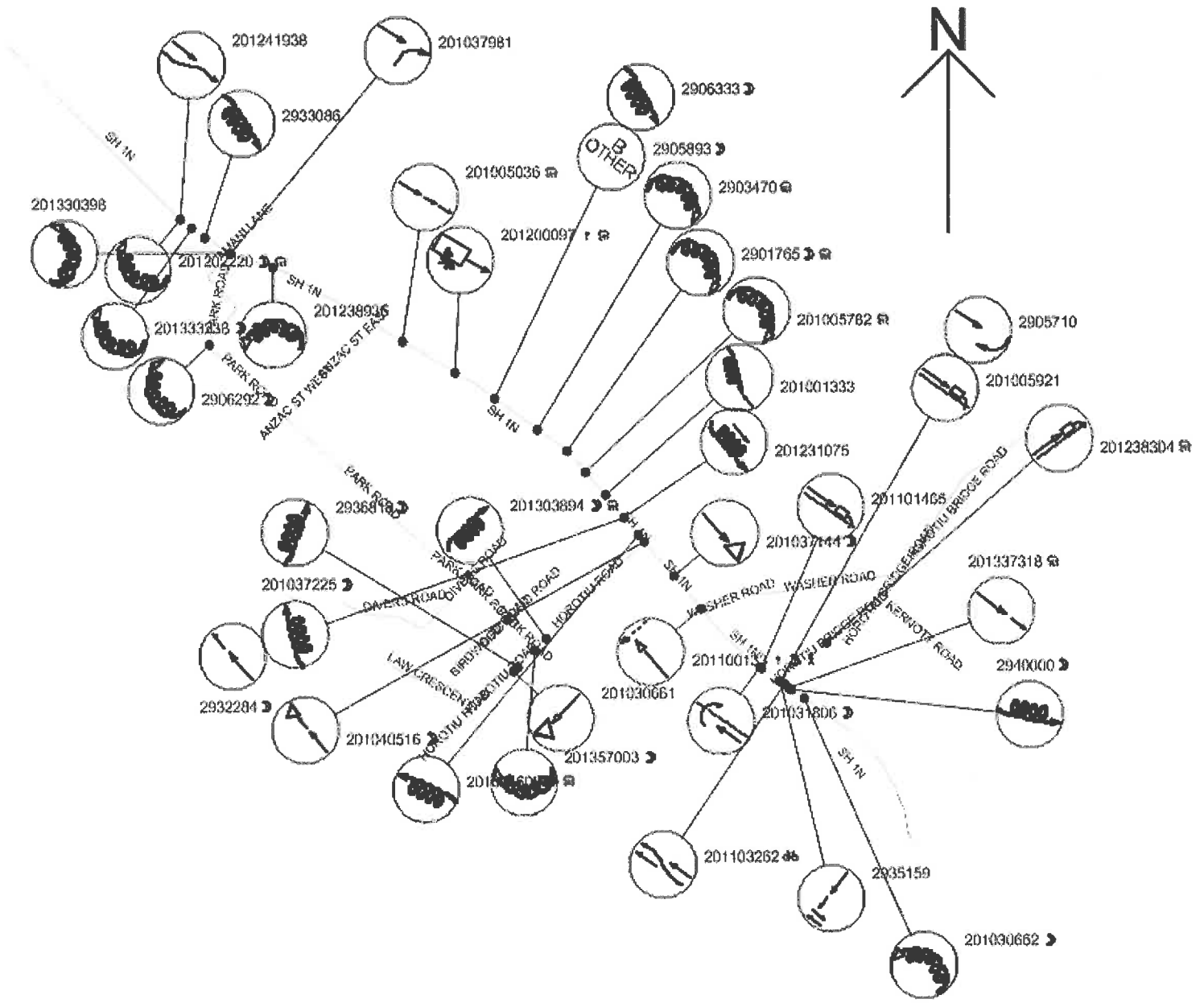
First Street	Second street or landmark	Crash Number	Date DD/MM/YYYY	Day Time DDD HRMM	Description of Events	Crash Factors (ENV = Environmental factors)	Road Natural Light	Weather Junction	Contrl	Tot Inj F S M A E I T R N	
1N/535/2.902	200S CROALL CRESCENT	201203410	23/06/2012	Sat 2240	CAR1 SBD on SH IN lost control; went off road to left, CAR1 hit ditch	CAR1 alcohol test above limit or test refused, attention diverted by passengers, emotionally upset/road rage	Dry	Fine	Unknown	N/A	2
1N/533/3.364	50N SAULBREY ROAD	201000097	29/06/2010	Tue 2135	CAR1 NBD on SH IN hit PEDESTRIAN2 (Age 20) walking with traffic	PEDESTRIAN2 drugs proven, emotionally upset/road rage, walking along road not keeping to side of rd	Wet	Light Rain	Unknown	Nil	1
1N/533/3.515	100S SAULBREY ROAD	201230433	23/02/2012	Thu 1520	CAR1 NBD on SH IN overtaking hit CAR2 head on	CAR1 failed to notice oncoming traffic	Dry	Fine	Unknown	N/A	
1N/533/3.615	200S SAULBREY ROAD	201302298	06/02/2013	Wed 1458	CAR1 NBD on SH IN lost control; went off road to left, CAR1 hit Fence	CAR1 illness with no warning (eg heart attack)	Dry	Fine	Unknown	Nil	1
1N/533/3.765	350S SAULBREY ROAD	2905649	09/11/2009	Mon 0645	CAR1 NBD on SH IN lost control; went off road to left, CAR1 hit Post Or Pole	CAR1 attention diverted	Dry	Twilight	Unknown	Nil	1
1N/533/3.765	350S SAULBREY ROAD	201336742	25/08/2013	Sun 0747	CAR1 NBD on SH IN lost control; went off road to left, CAR1 hit Fence	CAR1 suddenly swerved to avoid vehicle ENV: road slippery (rain)	Wet	Overcast	Unknown	N/A	
39/0/0	I SH 1N	201230521	08/03/2012	Thu 1530	CAR1 EBD on SH 39 hit rear end of CAR2 stop/slow for cross traffic	CAR1 failed to notice car slowing, overseas/migrant driver failed to adjust to NZ road rules and road conditions	Dry	Overcast	Fine	T Type Junction	Give Way Sign
39/0/0	I SH 39	201241789	23/12/2012	Sun	CAR1 WBD on SH 39 lost control turning left, CAR1 hit Fence	CAR1 too fast entering corner, lost control when turning	Dry	Overcast	Fine	T Type Junction	Give Way Sign
39/0/0.02	20W SH 1N	201044272	23/12/2010	Thu 2045	CAR2 turning right hit by oncoming CAR1 EBD on SH 39	CAR2 failed to give way when turning to non-turning traffic, misjudged intentions of another party ENV: entering or leaving service station	Dry	Dark	Fine	Driveway	Nil
39/0/0.108	I ELLERY ST	201131695	30/01/2011	Sun 1335	CAR1 NBD on SH 39 hit rear end of CAR2 stop/slow for cross traffic	CAR1 alcohol test above limit or test refused	Dry	Bright	Fine	T Type Junction	Give Way Sign
39/0/0.569	I HAVELOCK ROAD N	201230305	16/08/2012	Thu 0910	CAR1 SBD on SH 39 hit CAR2 merging from the right	CAR2 failed to give way at give way sign, didnt see/look when required to give way to traffic from another direction, new driver showed inexperience	Dry	Overcast	Fine	T Type Junction	Give Way Sign
39/0/0.569	I HAVELOCK ROAD N	201135546	14/08/2011	Sun 1030	CAR1 NBD on SH 39 hit CAR2 merging from the left	CAR2 failed to give way at give way sign	Dry	Bright	Fine	T Type Junction	Give Way Sign
39/0/0.599	I HAVELOCK ROAD S	201203742	12/06/2012	Tue 1500	CAR1 EBD on SH 39 hit CAR2 turning right onto SH 39 from the left	CAR1 attention diverted by cell phone	Dry	Bright	Fine	T Type Junction	Nil
39/0/0.699	100S HAVELOCK ROAD	201040265	09/09/2010	Thu 1249	CAR1 SBD on SH 39 lost control turning right, CAR1 hit Ditch on right hand bend	CAR1 too fast entering corner, lost control when turning	Wet	Overcast	Heavy Rain	Unknown	Nil
39/0/0.779	180S HAVELOCK ROAD	201137428	15/09/2011	Thu 0100	CAR1 NBD on SH 39 lost control turning right, CAR1 hit Traffic Sign on right hand bend	CAR1 alcohol suspected, lost control when turning, showing off wheelspins etc, stolen vehicle, puncture or blowout ENV: road slippery (rain)	Wet	Dark	Light Rain	Unknown	N/A
39/0/0.799	200S HAVELOCK ROAD	2943350	04/11/2009	Wed 1542	CAR1 SBD on SH 39 lost control turning left, CAR1 hit Fence	CAR1 lost control due to road conditions ENV: road slippery (loose material on seal)	Dry	Bright	Fine	Unknown	N/A
39/0/1.223	1280N SAULBREY ROAD	201302297	24/03/2013	Sun 1350	CAR1 SBD on SH 39 lost control turning right, CAR1 hit Fence on right hand bend	CAR1 too far left/right, lost control while returning to seal from unseated shoulder	Dry	Bright	Fine	Unknown	Nil

First Street	ID Second Street or Landmark	Crash Number	Date	Day Time	Description of Events	Crash Factors	Road	Natural	Weather	Junction	Ctrl	Tot Inj F S M A E I T R N
39/0/1.329	730S HAVELOCK ROAD S	2902042	03/03/2009	Tue 2004	CAR1 SBD on SH 39 hit obstruction, CAR1 hit Fence, Slip Or Flood, Post Or Pole	(ENV = Environmental factors)	Wet	Twilight	Heavy Rain	Unknown	N/A	1
39/0/1.803	700N SAULBREY ROAD	2944736	16/11/2009	Mon 1239	TRUCK1 NBD on SH 39 hit rear end of SUV2 stop/slow for queue	TRUCK1 following too closely	Dry	Overcast	Fine	Unknown	Nil	
39/0/2.153	350N SAULBREY ROAD	201332459	14/03/2013	Thu 1535	CAR1 NBD on SH 39 lost control turning right on right hand bend	CAR1 too fast entering corner, lost control when turning, worn tread on tyre	Dry	Bright	Fine	Unknown	N/A	
39/0/2.153	350N SAULBREY ROAD	201241268	28/12/2012	Fri 0150	VAN1 NBD on SH 39 lost control turning right, VAN1 hit Ditch on right hand bend	VAN1 fatigue due to long trip ENV: road slippery (rain)	Wet	Dark	Light Rain	Unknown	N/A	
39/0/2.203	300N SAULBREY ROAD	2933089	07/03/2009	Sat 1020	SUV1 SBD on SH 39 lost control turning left, SUV1 hit Fence, Ditch	SUV1 lost control when turning, driver over-reacted ENV: curve not well banked	Wet	Overcast	Fine	Unknown	N/A	
39/0/2.203	300N SAULBREY ROAD	2901339	12/02/2009	Thu 0623	CAR1 SBD on SH 39 lost control turning left, CAR1 hit Tree, Ditch	CAR1 lost control due to road conditions, suddenly swerved to avoid vehicle ENV: road slippery (rain), road slippery (oil/diesel/fuel)	Wet	Dark	Light Rain	Unknown	N/A	1
39/0/2.203	300N SAULBREY ROAD	2934616	08/05/2009	Fri 1710	CAR1 SBD on SH 39 lost control turning left, CAR1 hit Fence	CAR1 too fast entering corner, lost control when turning, driver over-reacted	Wet	Dark	Fine	Unknown	N/A	
39/0/2.503	I SAULBREY ROAD	201133574	17/06/2011	Fri 1829	CAR1 SBD on SH 39 lost control turning right, CAR1 went Over Bank on right hand bend	CAR1 too fast entering corner, lost control when turning ENV: road slippery (rain)	Wet	Dark	Light Rain	T Type Junction	Stop Sign	
39/0/2.503	I SAULBREY ROAD	201134142	16/04/2011	Sat 0935	TRUCK1 SBD on SH 39 lost control turning right, TRUCK1 hit Fence on right hand bend	TRUCK1 lost control when turning	Wet	Overcast	Light Rain	T Type Junction	Stop Sign	
39/0/2.503	I SAULBREY ROAD	201038475	07/08/2010	Sat 1036	SUV1 SBD on SH 39 lost control turning right on right hand bend	SUV1 lost control when turning ENV: road slippery (surface bleeding / defective)	Wet	Overcast	Heavy Rain	T Type Junction	Stop Sign	
39/0/2.503	I SAULBREY ROAD	201043186	18/08/2010	Wed 2345	TRUCK1 SBD on SH 39 lost control turning right, TRUCK1 hit Fence on right hand bend	TRUCK1 lost control when turning ENV: heavy rain	Wet	Dark	Heavy Rain	T Type Junction	Stop Sign	
39/0/2.513	10S SAULBREY ROAD	201101047	18/01/2011	Tue 1826	TRUCK1 SBD on SH 39 lost control on curve and hit TRUCK2 head on	TRUCK1 lost control when turning ENV: slippery, road slippery (rain)	Wet	Overcast	Light Rain	T Type Junction	Stop Sign	1
39/0/2.555	50S SAULBREY ROAD	201132204	06/04/2011	Wed 1310	TRUCK1 NBD on SH 39 lost control turning left	TRUCK1 lost control when turning ENV: slippery, road slippery (rain)	Wet	Overcast	Light Rain	Unknown	N/A	
39/0/2.623	120S SAULBREY ROAD	2903487	24/03/2009	Tue 0038	TRUCK1 NBD on SH 39 lost control turning left, TRUCK1 hit Post Or Pole	TRUCK1 too fast entering corner, lost control when turning, fatigue due to working long hours before driving	Dry	Dark	Fine	Unknown	N/A	1

Horotiu crash listing and collision diagram

First Street	(D) Second street (I) or landmark	Crash Number	Date DD/MM/YYYY	Day Time DDD HHMM	Description of Events	Crash Factors	Road	Natural Light	Weather	Junction	Ctrl	Tot Inj F S M A E I T R N
1N/533/6.088	30N HOROTIU ROAD	201004609	17/08/2010	Tue 0515	CAR1 NBD on SH 1N lost control; went off road to left, CAR1 hit fence	(ENV = Environmental factors)	Wet	Dark	Heavy Rain	Unknown	Nil	1
1N/533/6.118	I HOROTIU ROAD	201040516	26/03/2010	Fri 0404	TRUCK1 NBD on SH 1N hit rear end of VAN2 stop/slow for obstruction	TRUCK1 failed to notice car slowing, attention diverted by other traffic	Dry	Dark	Fine	T Type Junction	Stop Sign	1
1N/533/6.268	150S HOROTIU ROAD	201037144	25/05/2010	Tue 1836	CAR1 SBD on SH 1N hit obstruction, CAR1 hit Stray Animal	ENV: household pet rushed out or playing	Dry	Dark	Fine	Unknown	N/A	
1N/533/6.41	20N WASHER ROAD	201100133	25/12/2011	Sun 2130	VAN1 NBD on SH 1N hit PEDESTRIAN2 (Age 52) crossing road from right side	VAN1 attention diverted by scenery or persons outside vehicle, did not see or look for other party until too late	Dry	Dark	Fine	Unknown	Nil	1
HOROTIU ROAD	50N PARK ROAD	201303884	05/08/2013	Mon 0430	CAR1 NBD on HOROTIU ROAD lost control but did not leave the road, CAR1 hit Other	CAR1 lost control avoiding another vehicle, suddenly swerved to avoid animal ENV: fog or mist	Wet	Dark	Mist	Unknown	N/A	2
HOROTIU BRIDGE ROAD	200E SH 1N	201238304	21/08/2012	Tue 0813	TRUCK1 EBD on HOROTIU BRIDGE ROAD hit rear of CAR2 turning right from centre line	TRUCK1 failed to notice car slowing, attention diverted by rain), entering or leaving other non-commercial	Wet	Overcast	Light Rain	Driveway	N/A	
HOROTIU ROAD	I PARK ROAD	201357003	06/11/2013	Wed 2238	SUV1 WBD on PARK ROAD lost control turning right on right hand bend	SUV1 alcohol test above limit or test refused, too fast to give way at intersection, failed to give way at give way sign	Dry	Dark	Fine	T Type Junction	Give Way Sign	
1N/533/6.68	80N HOROTIU BRIDGE ROAD	201031806	09/03/2010	Tue 2035	CAR1 NBD on SH 1N hit CAR2 U-turning from same direction of travel	CAR2 didnt see/look behind when changing lanes, position or direction	Dry	Dark	Fine	Unknown	Nil	
HOROTIU ROAD	80S PARK ROAD	2936818	25/04/2009	Sat 0040	CAR1 NBD on HOROTIU ROAD lost control; went off road to left, CAR1 hit Fence	CAR1 alcohol test above limit or test refused	Dry	Dark	Fine	Unknown	N/A	
1N/533/6.69	70N HOROTIU BRIDGE ROAD	201101465	08/03/2011	Tue 0747	CAR1 EBD on SH 1N hit rear of TRUCK2 turning right from centre line	CAR1 failed to notice indication of vehicle in front ENV: entering or leaving other commercial	Dry	Bright	Fine	Driveway	N/A	1
HOROTIU ROAD	100W PARK ROAD	201030661	05/01/2010	Tue 1906	TRUCK1 WBD on HOROTIU ROAD hit obstruction, TRUCK1 hit Post Or Pole, CAR2 hit Post Or Pole	ENV: obstructed	Dry	Bright	Fine	Unknown	Nil	
HOROTIU BRIDGE ROAD	I 1N/533/6.76	2935159	05/06/2009	Fri 0750	CAR1 WBD on HOROTIU BRIDGE ROAD hit rear end of CAR2 stop/slow for cross traffic	CAR1 attention diverted by other traffic, misjudged intentions of another party	Dry	Overcast	Mist	T Type Junction	Give Way Sign	
1N/533/6.76	I HOROTIU BRIDGE ROAD	2905710	28/11/2009	Sat 1110	CAR1 SBD on SH 1N hit CAR2 turning right onto SH 1N from the left	CAR2 failed to give way at give way sign, didnt see/look when required to give way to traffic from another direction	Dry	Overcast	Fine	T Type Junction	Give Way Sign	2
1N/533/6.76	I HOROTIU BRIDGE ROAD	201005921	29/11/2010	Mon 1131	VAN1 SBD on SH 1N hit rear of VAN2 turning right from centre line	VAN1 failed to notice car slowing, attention diverted ENV: entering or leaving private house / farm	Dry	Bright	Fine	Driveway	Give Way Sign	1
1N/533/6.78	20S HOROTIU BRIDGE ROAD	201103282	27/06/2011	Mon 0950	CYCLIST1 (Age 66) NBD on SH 1N changing lanes/overtaking to right hit TRUCK2	CYCLIST1 misjudged speed, etc of vehicle coming from behind or alongside	Dry	Bright	Fine	Unknown	N/A	1
1N/533/6.8	40S HOROTIU BRIDGE ROAD	201337318	29/08/2013	Thu 0742	CAR1 SBD on SH 1N hit rear end of CAR2 stopped/moving slowly	CAR1 following too closely CAR2 suddenly braked, obstruction on roadway ENV: obstructed	Wet	Bright	Fine	Unknown	N/A	
1N/533/6.81	50S HOROTIU BRIDGE ROAD	2940000	15/07/2009	Wed 2001	TRUCK1 SBD on SH 1N lost control; went off road to left, TRUCK1 hit Fence, Post Or Pole, Ditch	TRUCK1 too far left/right, attention diverted by cigarette etc	Dry	Dark	Fine	Unknown	Nil	
1N/533/6.86	100S HOROTIU BRIDGE ROAD	201030662	25/01/2010	Mon 0417	CAR1 NBD on SH 1N lost control turning left, CAR1 hit Fence	CAR1 fatigue (drowsy, tired, fell asleep)	Dry	Dark	Fine	Unknown	Nil	

First Street	DI Second street I or landmark I or landmark Distance (R)	Crash Number	Date	Day Time	Description of Events	Crash Factors	Road	Natural Light	Weather	Junction	Ctrl	Tot Inj F S M A E I T R N
1N/533/4.231	200N AMARI LANE	201202220	29/04/2012	Sun 1820	CAR1 NBD on SH IN lost control turning right, CAR1 hit Post Or Pole on right hand bend	(ENV = Environmental factors) CAR1 too far left/right, lost control when turning, new driver showed inexperience ENV: road slippery (rain)	Wet	Dark	Light Rain	Unknown	N/A	1
1N/533/4.231	200N PARK ROAD	201241938	05/11/2012	Mon 0634	CAR1 SBD on SH IN changing lanes to left hit VAN2	CAR1 too fast on straight, failed to notice oncoming traffic, cut in after overtaking	Dry	Bright	Fine	Unknown	N/A	
1N/533/4.281	150W AMARI LANE	201333238	10/05/2013	Fri 0500	CAR1 NBD on SH IN lost control turning right, CAR1 hit Fence on right hand bend	CAR1 too fast entering corner, lost control when turning, stolen vehicle ENV: heavy rain	Wet	Dark	Heavy Rain	Unknown	N/A	
1N/533/4.331	100W PARK ROAD	2933086	22/03/2009	Sun 0918	CAR1 SBD on SH IN lost control; went off road to right, CAR1 hit Post Or Pole	CAR1 fatigue due to lack of sleep	Dry	Bright	Fine	Unknown	N/A	
1N/533/4.431	I PARK ROAD	201037981	12/07/2010	Mon 1151	CAR1 SBD on SH IN hit VAN2 merging from the right	VAN2 failed to give way at stop sign, didnt see/look when required to give way to traffic from another direction	Dry	Bright	Fine	X Type Junction	Stop Sign	
1N/533/4.431	I PARK ROAD	201330398	06/02/2013	Wed 0857	CAR1 NBD on PARK ROAD lost control turning left, CAR1 hit Fence	CAR1 alcohol test below limit, lost control under heavy acceleration, showing off wheelspins etc	Dry	Bright	Fine	X Type Junction	Stop Sign	
1N/533/4.581	150E AMARI LANE	201238936	12/09/2012	Wed 1220	CAR1 WBD on SH IN lost control turning left, CAR1 hit Fence	CAR1 lost control when turning, attention diverted by cigarette etc	Dry	Bright	Fine	Unknown	N/A	
1N/533/5.073	100S ANZAC ST EAST	201005036	22/09/2010	Wed 0750	VAN1 SBD on SH IN hit rear end of SUV2 stop/slow for queue, VAN1 hit Fence, Tree	VAN1 following too closely	Wet	Overcast	Light Rain	Unknown	Nil	1
PARK ROAD	400S SH IN	2906292	27/12/2009	Sun 0253	CAR1 NBD on PARK ROAD lost control turning right on right hand bend	CAR1 alcohol test above limit or test refused	Dry	Dark	Fine	Unknown	Nil	2
1N/533/5.273	300S ANZAC ST EAST	201200097	13/10/2012	Sat 1135	passenger fell from moving TRUCK1 SBD on SH IN	TRUCK1 alcohol test below limit, intentionally leaving moving vehicle	Wet	Overcast	Heavy Rain	Unknown	Nil	1
1N/533/5.431	1000S PARK ROAD	2906333	21/11/2009	Sat 0549	CAR1 SBD on SH IN lost control; went off road to right, CAR1 hit Ditch	CAR1 lost control, fatigue (drowsy, tired, fell asleep)	Dry	Dark	Fine	Unknown	Nil	1
1N/533/5.431	1000S PARK ROAD	2905893	23/11/2009	Mon 0421	TRUCK1 SBD on SH IN hit CAR2 head on	TRUCK1 overdimension vehicle or load CAR2 too far left/right	Dry	Dark	Fine	Unknown	Nil	2
1N/533/5.607	A HOROTIU FREEZING WKS	2903470	07/07/2009	Tue 1130	VAN1 SBD on SH IN lost control turning right, VAN1 hit Fence, Ditch on right hand bend	VAN1 lost control when turning ENV: road slippery (rain)	Wet	Overcast	Light Rain	Unknown	N/A	1
1N/533/5.727	120S HOROTIU FREEZING WKS	2901765	01/03/2009	Sun 0613	TRUCK1 SBD on SH IN lost control turning right, TRUCK1 hit Fence on right hand bend	TRUCK1 too far left/right, lost control while returning to seal fence seal about 20m, driver overreacted fatigue (drowsy, tired, fell asleep)	Wet	Twilight	Light Rain	Unknown	N/A	1
1N/533/5.818	300N HOROTIU ROAD	201005782	05/11/2010	Fri 0954	TRUCK1 SBD on SH IN lost control turning right, TRUCK1 hit Fence on right hand bend	TRUCK1 lost control when turning	Wet	Overcast	Light Rain	Unknown	Nil	1
1N/533/5.918	200N HOROTIU ROAD	201001333	16/01/2010	Sat 1040	CAR1 SBD on SH IN lost control on straight and hit CAR2 head on	CAR1 fatigue due to long trip	Dry	Bright	Fine	Unknown	N/A	3 3
1N/533/6.018	100N HOROTIU ROAD	2932284	22/02/2009	Sun 2130	CAR1 NBD on SH IN hit rear end of CAR2 stopped/moving slowly	CAR1 emotionally upset/road rage, intentional collision	Dry	Dark	Fine	Unknown	N/A	
1N/533/6.018	100N HOROTIU ROAD	201037225	28/06/2010	Mon 0730	CAR1 NBD on SH IN lost control; went off road to right, CAR1 hit Cliff Bank, Fence	CAR1 fatigue (drowsy, tired, fell asleep)	Dry	Twilight	Fine	Unknown	N/A	
1N/533/6.018	100N HOROTIU ROAD	201231075	24/04/2012	Tue 0754	CAR1 SBD on SH IN lost control while overtaking, CAR1 hit Fence	CAR1 too fast for conditions, lost control, driver over-reacted ENV: road slippery (loose material on seal), fog or mist	Dry	Overcast	Mist	Unknown	N/A	

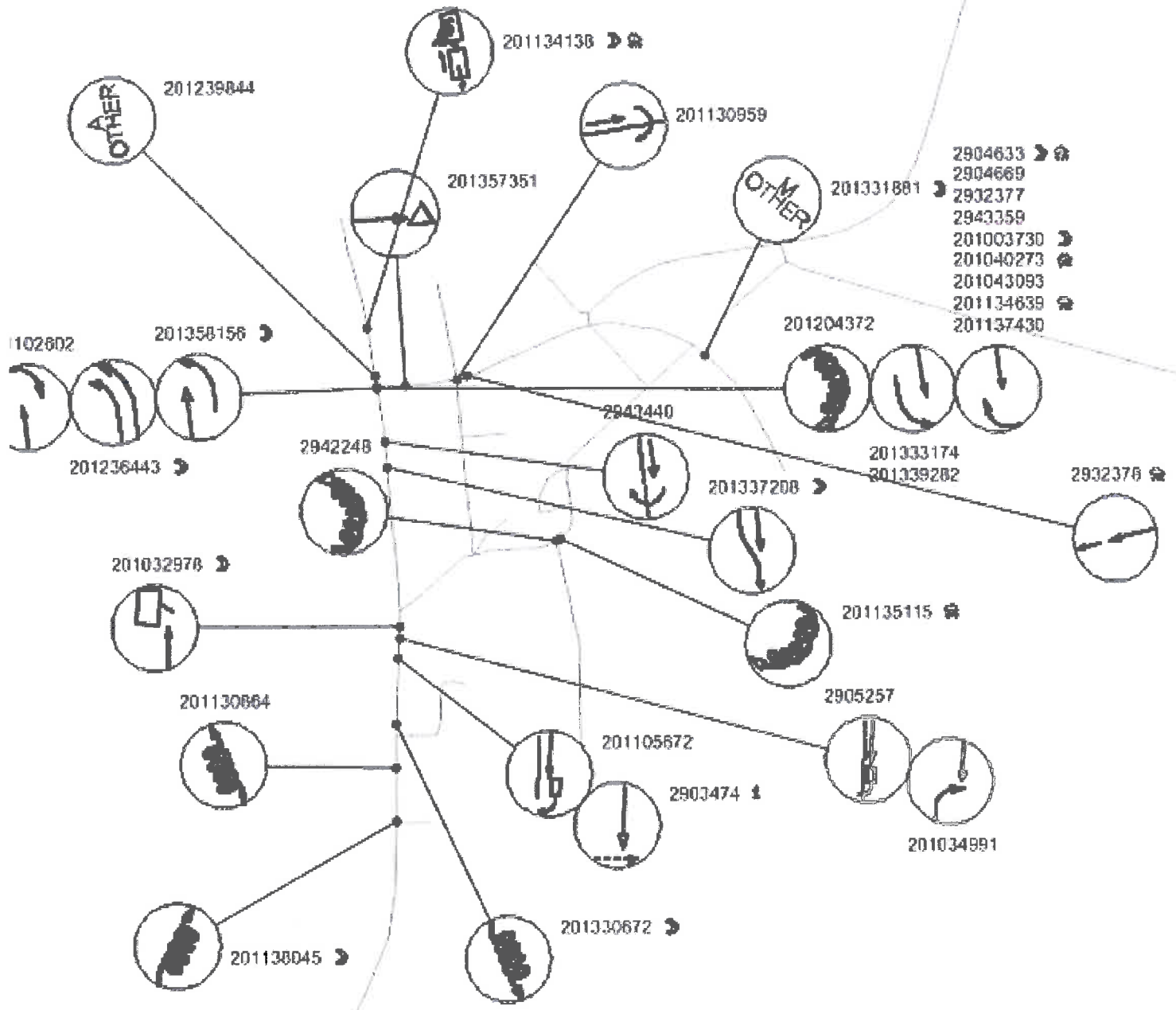


Horotiu Crashes 2009-2013

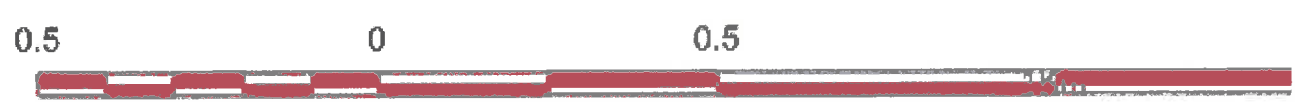
Taupiri crash listing and collision diagram

First Street	Second street or landmark Distance (R)	Crash Number	Date	Day Time	Description of Events	Crash Factors	Road Natural Light	Weather	Junction	Ctrl	Tot Inj F S M A E I T R N
1N/519/7.221	110N SH 1B	201134138	12/05/2011	Thu 0627	Load or trailer from TRUCK1 SBD on SH 1N TRUCK1 went Over Bank	TRUCK1 inadequate tow coupling	Met	Dark	Unknown	Nil	
1B/0/0.64	640S SH 1N	201331881	08/04/2013	Mon 2147	VAN1 SBD on SH 1B hit VEH8 manoeuvring, VAN1 hit Ditch	VAN1 alcohol test above limit or test refused, misjudged speed, distance or position	Dry	Dark	Unknown	N/A	
1N/519/7.311 GREAT SOUTH	20N SH 1B GORDONTON	201239844	01/11/2012	Thu 0930	CAR1 NBD on SH 1N GREAT SOUTH overtaking CAR2	CAR1 incorrect merging/diverging manoeuvre, emotionally upset/road rage	Dry	Bright	Unknown	N/A	
1B/0/0.167	20E GREENLANE ROAD	2932378	21/02/2009	Sat 1117	CAR1 WED on SH 1B hit rear end of VAN2 stopped/moving slowly	CAR1 following too closely, failed to notice car slowing ENV: road slippery (rain)	Wet	Overcast	T Type Junction	Nil	
1B/0/0.147	I WRIGHT ST	201130959	01/02/2011	Tue 0954	SUV1 EBD on SH 1B hit SUV2 U-turning from same direction of travel	SUV2 didnt see/look behind when changing lanes, position or direction	Dry	Bright	X Type Junction	Give Way Sign	
1B/0/0.05	50E SH 1N	201357351	30/11/2013	Sat 1510	CAR1 EBD on SH 1B hit obstruction, CAR1 hit Other	ENV: road obstructed (fallen tree or branch), strong wind	Dry	Overcast	Unknown	Nil	
1N/519/7.331	I SH 1B	2932377	23/02/2009	Mon 1648	CAR1 SBD on SH 1N hit CAR2 turning right onto SH 1N from the left	CAR2 failed to give way at stop sign, didnt see/look when visibility obstructed by other vehicles	Dry	Bright	T Type Junction	Stop Sign	
1N/519/7.331	I SH 1B	2904633	22/07/2009	Wed 0646	TRUCK1 SBD on SH 1N hit SUV2 turning right onto SH 1N from the left	SUV2 failed to give way at stop sign, attention diverted by other traffic, didnt see/look when required to give way to traffic from another direction	Wet	Twilight	T Type Junction	Stop Sign	1
1N/519/7.331	I SH 1B	2904669	05/08/2009	Wed 1236	CAR1 SBD on SH 1N hit CAR2 turning right onto SH 1N from the left	CAR2 failed to give way at stop sign, didnt see/look when required to give way to traffic from another direction ENV: dazzling sun	Dry	Bright	T Type Junction	Stop Sign	1
1N/519/7.331	I SH 1B	2943359	14/12/2009	Mon 1054	CAR1 SBD on SH 1N hit CAR2 turning right onto SH 1N from the left	CAR2 failed to give way at stop sign, didnt see/look when required to give way to traffic from another direction	Dry	Bright	T Type Junction	Stop Sign	
1N/519/7.331 GREAT SOUTH	I SH 1B GORDONTON	201003730	09/07/2010	Fri 1855	MOTOR CYCLE1 SBD on SH 1N GREAT SOUTH hit CAR2 turning right onto SH 1N GREAT SOUTH from the left	CAR2 failed to give way at stop sign, didnt see/look when required to give way to traffic from another direction	Dry	Dark	T Type Junction	Stop Sign	1
1N/519/7.331	I SH 1B	201040273	10/09/2010	Fri 0900	CAR1 SBD on SH 1N hit CAR2 turning right onto SH 1N from the left	CAR2 failed to give way at stop sign, didnt see/look when visibility obstructed by other vehicles	Wet	Overcast	T Type Junction	Stop Sign	
1N/519/7.331 GREAT SOUTH	I SH 1B GORDONTON	201043093	23/11/2010	Tue 1201	CAR1 SBD on SH 1N GREAT SOUTH hit CAR2 turning right onto SH 1N GREAT SOUTH from the left	CAR2 failed to give way at stop sign, didnt see/look when visibility obstructed by other vehicles	Dry	Bright	T Type Junction	Stop Sign	
1N/519/7.331 GREAT SOUTH	I SH 1B GORDONTON	201134639	22/01/2011	Sat 0905	CAR1 SBD on SH 1N GREAT SOUTH hit CAR2 turning right onto SH 1N GREAT SOUTH from the left, CAR1 hit Pole or Pole	CAR2 failed to give way at stop sign ENV: road slippery (rain)	Wet	Overcast	T Type Junction	Stop Sign	
1N/519/7.331	I GORDONTON ROAD	201102602	30/04/2011	Sat 1130	CAR1 NBD on SH 1N hit CAR2 turning right onto SH 1N from the left	CAR2 failed to give way at stop sign, didnt see/look when required to give way to traffic from another direction	Dry	Bright	T Type Junction	Stop Sign	1
1N/519/7.331	I SH 1B	201137430	13/09/2011	Tue 1539	CAR1 SBD on SH 1N hit CAR2 turning right onto SH 1N from the left	CAR2 failed to give way at stop sign, didnt see/look when visibility obstructed by other vehicles	Dry	Overcast	T Type Junction	Stop Sign	
1N/519/7.331	I SH 1B	201236443	28/06/2012	Thu 1710	TRUCK1 and VAN2 both NBD on SH 1N and turning: collided	TRUCK1 misjudged speed of own vehicle	Dry	Twilight	Fine	Roundabout	Give Way Sign

First Street	ID/Second street or landmark Distance (R)	Crash Number	Date DD/MM/YYYY	Day Time DD HHMM	Description of Events	Crash Factors (ENV = Environmental factors)	Road 	Natural Light	Weather	Junction	Cntrl	Tot Inj F S M A E I T R N
1N/519/7.331 GREAT SOUTH	I SH 1B GORDONTON	201204372	13/09/2012	Thu 0750	TRUCK1 SBD on SH IN GREAT SOUTH lost control turning right, TRUCK1 hit Post Or Pole on right hand bend	TRUCK1 too fast entering corner, lost control when turning	Dry	Bright	Fine	T Type Junction	Stop Sign	1
1N/519/7.331	I SH 1B	201333174	07/05/2013	Tue 0810	CAR1 SBD on SH IN sideswiped by VAN2 turning left	VAN2 turned left from incorrect lane, attention diverted by other traffic, attention diverted while trying to find intersection didn't see/look behind when changing lanes, position or direction	Dry	Bright	Fine	Roundabout	Give Way Sign	
1N/519/7.331 GREAT SOUTH	I SH 1B GORDONTON	201339282	29/10/2013	Tue 1000	CAR1 SBD on SH IN GREAT SOUTH sideswiped by VAN2 turning left	VAN2 turned left from incorrect lane, attention diverted by navigation device, didn't see/look behind when changing lanes, position or direction, blind spot	Dry	Overcast	Fine	Roundabout	Give Way Sign	
1N/519/7.331	I SH 1B	201358156	20/12/2013	Fri 2115	TRUCK1 NBD on SH IN sideswiped by CAR2 turning left	CAR2 turned left from incorrect lane, misjudged intentions of another party, inexperience	Dry	Dark	Fine	Roundabout	Give Way Sign	
1N/519/7.431 GREAT SOUTH	100S SH 1B GORDONTON	2943440	22/11/2009	Sun 1538	CAR1 SBD on SH IN GREAT SOUTH hit CAR2 u-turning from same direction of travel	CAR2 didn't see/look behind when changing lanes, position or direction	Dry	Overcast	Fine	Unknown	N/A	
1N/519/7.481	150S GORDONTON ROAD	201337208	26/06/2013	Wed 1715	CAR1 SBD on SH IN changing lanes to left hit CAR2	CAR1 overtaking deliberately in the face of oncoming traffic, suddenly swerved to avoid vehicle, new driver showed inexperience	Dry	Dark	Fine	Unknown	Nil	
TE PUTU ST	10N MURPHY LANE	201135115	31/05/2011	Tue 0800	CAR1 SBD on TE PUTU ST lost control turning right, CAR1 went Over Bank, Fence, Other on right hand bend	CAR1 lost control when turning	Wet	Overcast	Fine	T Type Junction	Give Way Sign	
TE PUTU ST	I MURPHY LANE	2942248	10/08/2009	Mon 1625	CAR1 NBD on MURPHY LANE lost control turning left, CAR1 hit Fence	CAR1 lost control, attention diverted by cigarette etc	Dry	Overcast	Fine	T Type Junction	Give Way Sign	1
1N/519/7.775	30S TE PUTU ST	201032978	17/03/2010	Wed 2130	SUV2 NBD on SH IN opened door into path of another party, TRUCK1 hit Vehicle	TRUCK1 too far left/right	Dry	Dark	Fine	Unknown	Nil	
1N/519/7.795	50S TE PUTU ST	2905257	07/08/2009	Fri 1347	VAN1 SBD on SH IN hit rear of CAR2 turning right from centre line	VAN1 failed to notice car slowing, attention diverted by cell phone ENV: entering or leaving roadside stall	Dry	Bright	Fine	Driveway	Nil	
1N/519/7.795	50S TE PUTU ST	201034991	13/05/2010	Thu 1615	CAR2 turning right hit by oncoming CAR1 SBD on SH IN	CAR1 suddenly braked CAR2 failed to give way when turning to non-turning traffic, inattentive ENV: entering or leaving other commercial	Dry	Bright	Fine	Driveway	N/A	
1N/519/7.835	90S TE PUTU ST	2903474	08/02/2009	Sun 1710	CAR1 SBD on SH IN hit PEDESTRIAN2 crossing road from right side	PEDESTRIAN2 crossing road, running heedless of traffic	Dry	Bright	Fine	Unknown	N/A	1
1N/519/7.836	90S TE PUTU ST	201105672	21/11/2011	Mon 1450	CAR1 SBD on SH IN hit rear of SUV2 turning right from left side, CAR1 hit Fence	SUV2 didn't see/look behind when changing lanes, position or direction ENV: entering or leaving other commercial	Dry	Overcast	Fine	Driveway	N/A	1
1N/519/7.956	20N FACTORY LANE	201330672	27/02/2013	Wed 0430	CAR1 SBD on SH IN lost control; went off road to left, CAR1 hit Fence, Kerb, Post Or Pole	CAR1 fatigue (drowsy, tired, fell asleep)	Dry	Dark	Fine	Unknown	N/A	
1N/519/8.035	60S FACTORY LANE	201130864	05/02/2011	Sat 1148	CAR1 NBD on SH IN lost control; went off road to left, CAR1 hit Post Or Pole, Tree	CAR1 fatigue (drowsy, tired, fell asleep), medical illness (not sudden eg flu)	Dry	Bright	Fine	Unknown	Nil	
1N/519/8.134	5N LOVELL AVENUE	201138045	19/10/2011	Wed 2130	CAR1 NBD on SH IN lost control; went off road to right, CAR1 hit traffic island, post Or Pole	CAR1 suddenly swerved to avoid animal, misjudged size or position of fixed object or obstacle	Dry	Dark	Fine	T Type Junction	Give Way Sign	



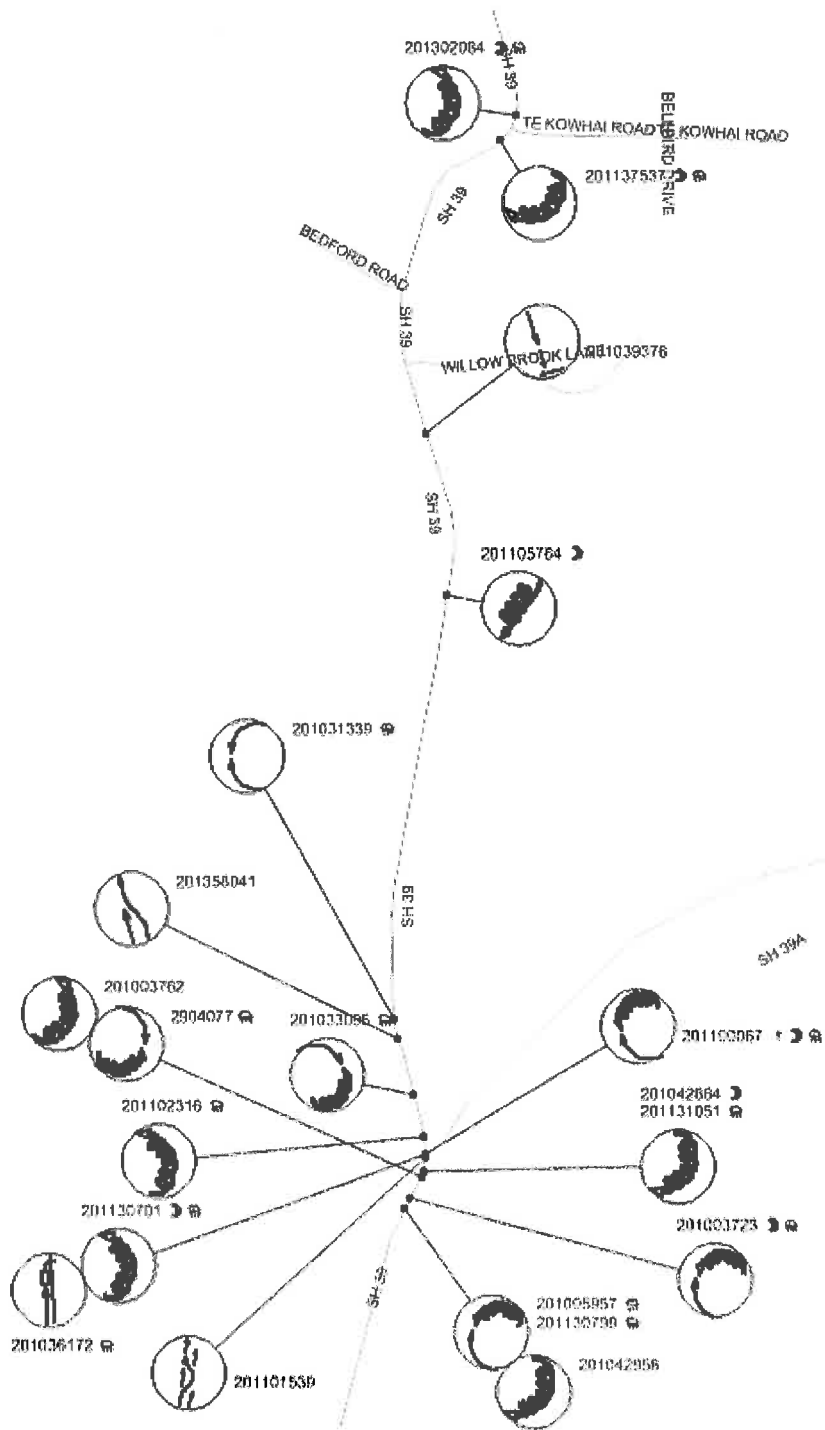
Taupiri 2009-2013



Te Kowhai crash listing and collision diagram

First Street	ID Second Street or landmark Distance R	Crash Number	Date DD/MM/YYYY	Day Time	Description of Events	Crash Factors (ENV = Environmental factors)	Road	Natural Light	Weather	Junction	Ctrl	Tot Inj F S M A B I T R N
39/0/9.208	20N TE KOWHAI ROAD	201302084	03/05/2013	Fri 0315	TRUCK1 NBD on SH 39 lost control turning left, TRUCK1 hit Kerb, Post Or Pole, Tree	TRUCK1 too fast entering corner, lost control when turning ENV: fog or mist	Wet	Dark	Mist	T Type Junction	Give Way Sign	1
39/0/9.258	30S TE KOWHAI ROAD	201137537	26/09/2011	Mon 0635	CAR1 SBD on SH 39 lost control turning right, CAR1 hit fence, Kerb on right hand bend	CAR1 too fast entering corner, lost control when turning, fatigue (drowsy, tired, fell asleep) ENV: fog or mist	Wet	Twilight	Mist	Unknown	N/A	
39/0/9.82	120S WILLOW BROOK LANE	201039376	07/09/2010	Tue 1300	TRUCK1 SBD on SH 39 hit rear end of VAN2 stop/slow for PEDES/FRAN	TRUCK1 following too closely, failed to notice car slowing	Dry	Bright	Fine	Unknown	N/A	
39/0/10.1	400S WILLOW BROOK LANE	201105764	18/11/2011	Fri 0158	VAN1 SBD on SH 39 lost control; went off road to right, VAN1 hit Phone Box Etc., Post Or Pole	VAN1 fatigue (drowsy, tired, fell asleep)	Dry	Dark	Fine	Unknown	N/A	1
39/0/10.818	230N LIMMER ROAD	201031339	18/01/2010	Mon 1500	CAR1 NBD on SH 39 cutting corner hit CAR2 head on, CAR1 hit Cliff Bank, Traffic Sign	CAR1 cutting corner on bend CAR2 suddenly swerved to avoid vehicle	Wet	Overcast	Light Rain	Unknown	N/A	
39/0/10.848	200N LIMMER ROAD	201358041	17/12/2013	Tue 0835	TRUCK1 NBD on SH 39 changing lanes to left hit TRUCK2	TRUCK1 cut in after overtaking	Dry	Bright	Fine	Unknown	N/A	
39/0/10.948	100N LIMMER ROAD	201033095	22/03/2010	Mon 0856	CAR1 NBD on SH 39 lost control on curve and hit CAR2 head on	CAR1 lost control when turning ENV: road slippery (rain)	Wet	Overcast	Light Rain	Unknown	N/A	
39/0/11.018	30N LIMMER ROAD	201102316	16/04/2011	Sat 1355	CAR1 NBD on SH 39 lost control turning left, CAR1 hit Fence	CAR1 too fast entering corner, lost control when turning ENV: road slippery (rain)	Wet	Overcast	Light Rain	Unknown	N/A	2
39/0/11.048	I LIMMER ROAD	201036172	29/06/2010	Tue 1000	VAN1 NBD on SH 39 hit rear of VAN2 turning right from centre line, VAN1 hit Guard Rail	VAN1 inattentive, misjudged speed of own vehicle ENV: slippery, road surface unusually narrow	Wet	Bright	Fine	T Type Junction	Give Way Sign	1
39/0/11.048	I LIMMER ROAD	201100067	07/07/2011	Thu 1828	CAR1 SBD on SH 39 lost control on curve and hit VAN2 head on	CAR1 alcohol not suspected, tested and -ve (MOT use only), drugs proven, too fast entering corner, lost control when turning	Wet	Dark	Light Rain	T Type Junction	Give Way Sign	2
39/0/11.048	I LIMMER ROAD	201130701	28/01/2011	Fri 1923	CAR1 NBD on SH 39 lost control turning left, CAR1 hit Post Or Pole	CAR1 too fast entering corner, lost control when turning	Wet	Twilight	Light Rain	T Type Junction	Give Way Sign	1
39/11/0.005	5S LIMMER ROAD	201101539	20/03/2011	Sun 1626	SUV1 NBD on SH 39 weaving in heavy traffic hit CAR2	SUV1 alcohol test above limit or test refused, cut in after overtaking	Dry	Bright	Fine	T Type Junction	Give Way Sign	1
39/11/0.03	30S LIMMER ROAD	201042864	12/11/2010	Fri 0229	TRUCK1 SBD on SH 39 lost control turning right, TRUCK1 hit Fence on right hand bend	TRUCK1 too fast entering corner, lost control when turning	Dry	Dark	Fine	T Type Junction	Give Way Sign	
39/11/0.03	30S LIMMER ROAD	201131051	02/03/2011	Wed 1520	SUV1 SBD on SH 39 lost control turning right, SUV1 hit Post Or Pole on right hand bend	SUV1 too fast entering corner, lost control when turning, driver over-reacted ENV: road slippery (rain)	Wet	Overcast	Light Rain	Unknown	N/A	
39/11/0.04	40S LIMMER ROAD	201003762	26/07/2010	Mon 1345	CAR1 NBD on SH 39 lost control turning left, CAR1 hit Fence, Tree	CAR1 lost control when turning, driver over-reacted ENV: road surface under construction or maintenance	Dry	Bright	Fine	Unknown	N/A	1
39/11/0.04	40S LIMMER ROAD	2904077	17/05/2009	Sun 1410	CAR1 NBD on SH 39 lost control on curve and hit VAN2 head on	CAR1 too fast entering corner, lost control under heavy braking ENV: heavy rain	Wet	Overcast	Heavy Rain	Unknown	N/A	3
39/11/0.08	80S LIMMER ROAD	201003723	30/01/2010	Sat 2110	CAR1 SBD on SH 39 lost control on curve and hit CAR2 head on	CAR1 alcohol test below limit, too fast entering corner, lost control when turning ENV: heavy rain	Wet	Dark	Heavy Rain	Unknown	N/A	2
39/11/0.1	100S LIMMER ROAD	201042958	15/11/2010	Mon 0620	CAR1 SBD on SH 39 lost control turning right, CAR1 hit Ditch on right hand bend	CAR1 lost control when turning, attention diverted by navigation device, driver over-reacted	Dry	Overcast	Fine	Unknown	N/A	
39/11/0.1	100S LIMMER ROAD	201005957	18/12/2010	Sat 1036	CAR1 SBD on SH 39 lost control on curve and hit CAR2 head on	CAR1 lost control when turning ENV: slippery, heavy rain	Wet	Overcast	Heavy Rain	Unknown	N/A	1

First Street	ID Second street or landmark Distance R	Crash Number	Date DD/MM/YYYY	Day Time DDD HHMM	Description of Events	Crash Factors (ENV = Environmental factors)	Road Light	Natural Light	Weather Junction	Cntrl	Tot Inj F S M A E I T R N
39/11/0.1	100S LIMMER ROAD	201130799	23/01/2011	Sun 1148	CAR1 SBD on SH 39 lost control on curve and hit CAR2 head on	CAR1 too fast entering corner, lost control when turning	Wet	Overcast	Heavy Rain	Unknown	Nil



Te Kowhai 2009-2013