



TRANSPOWER

Keeping the energy flowing

Waikoukou
22 Boulcott Street
PO Box 1021
Wellington 6140
New Zealand
P 64 4 495 7000
F 64 4 495 6968
www.transpower.co.nz

Sarah Shand
Tel: 04 590 7434
Email: sarah.shand@transpower.co.nz

11 June 2018

Jane Macartney
Senior Policy Planner
Waikato District Council

Delivered via email to: jane.macartney@waidc.govt.nz

Dear Jane,

Waikato District Plan Review – Designations

Thank you for your email dated 3 May 2018 updating Transpower New Zealand Limited (Transpower) that the anticipated notification of the Proposed District Plan will now occur in July 2018.

Pursuant to Schedule 1 (Clause 4) of the Resource Management Act 1991, Transpower gives notice that its existing designations under the Operative Waikato District Plan (Waikato Section) and Operative Waikato District Plan (Franklin Section) are required to be included in the Proposed Waikato District Plan without modification.

The designations to be rolled over into the Proposed Waikato District Plan are as follows:

- Western Road Substation and Training Facility (Designation K1)
- Hamilton to Meremere B Underground Transmission Line Cable (DES0008/18)
- Huntly Outdoor Switchyard (Designation K3)
- Meremere Switching Station (Designation K4)
- Te Kowhai Substation (Designation K5)
- Te Kowhai Deviation (Designation K6)
- Ohinewai Switching Station (Designation K7)
- 400kV-capable transmission line between Auckland and Whakamaru as part of upper North Island Grid Upgrade project (Designation K8 and 152)

Transpower does not seek to rollover the designation for the Hamilton Substation (Designation K2) as that designation is now wholly within the boundary of Hamilton City Council.

Transpower understands that the 'K2' designation number will be transferred to the new designation for the Hamilton to Meremere B Underground Transmission Line Cable (DES0008/18) (accepted October 2017). Accordingly, this designation has been referred to as K2 in this letter.

Minor technical clarifications

No new requirements for designations are sought. However, some minor technical clarifications are required to some of the designations to be rolled over in to the Proposed Plan. These clarifications do not materially alter the existing designations in any way, and include matters such as more specific location details and corrections to legal descriptions.

Transpower requests that designations K8 and 152 are merged in to a single designation, and that the designation purpose is changed to 'Brownhill Road to Whakamaru North Overhead Transmission Line'. Designation 152 is a designation from when Franklin District Council was divided between Auckland Council and Waikato District Council. An updated legal description for the Brownhill Road to Whakamaru North Overhead Transmission Line is provided in Table 6A, which includes both the existing K8 and 152 designations.

Revised conditions

There are conditions on the designations for the Hamilton to Meremere B Underground Transmission Line Cable, Te Kowhai Substation, Te Kowhai Deviation A 220kV high voltage transmission line, Ohinewai Switching Station and Brownhill Road to Whakamaru North Overhead Transmission Line. Transpower has reviewed these conditions and requests that some of the conditions are updated as part of the plan review to accurately reflect the current legislation and codes of practice, and to remove unnecessary construction related conditions. Where any changes to conditions are proposed, they have been explained under subheadings for the relevant designation in the tables below.

A designation map, Certificate of Title and GIS shape file for the Hamilton to Meremere B Underground Transmission Line Cable designation is provided with this letter. Designation maps, Certificates of Title and GIS shape files for all other designated sites were previously provided to Waikato District Council in September 2017. Transpower has confirmed with you these documents are still sufficient for this designation roll-over.

TABLE 1: WESTERN ROAD SUBSTATION AND TRAINING FACILITY (K1)

Transpower requests that the designation for the Western Road Substation and Training Facility, being a designation that has not lapsed, be rolled over without modification. There are no conditions attached to this designation, and no conditions are proposed. A grammatical error is proposed to be corrected for the designated purpose in the Proposed Plan, as detailed below.

Information Requirement	Operative Plan	Minor Corrections requested ¹
Ref.	K1	-
Requiring Authority	Transpower New Zealand Limited	-
Area (ha)	0.5535	-
Designated Purpose	Western Road Sub Station and training facility	Western Road Sub- S station and training facility
Location	Rotowaro Road	-
Legal Description	Lot 1, DP 55948	-
Status Comment (lapsed/rollover/modify/new)	Carry forward	-
Underlying Zoning	Living	-
Map No	N/A – IntraMaps. The Western Road Substation and training facility designation is shown correctly on the IntraMaps of the Operative Waikato District Plan.	-

¹ New text is shown in **bold and underline**. Text to be removed is ~~struck through~~. This also applies to Tables 2-6B inclusive.

TABLE 2: HAMILTON TO MEREMERE B UNDERGROUND TRANSMISSION LINE CABLE (K2)

Transpower requests that the designation for the Hamilton to Meremere B Underground Transmission Line Cable, being a designation that has not lapsed, be rolled over without modification. There is one condition attached to this designation as detailed below. Changes to this condition are noted in Table 2A below.

Information Requirement	Operative Plan	Minor Corrections Requested
Ref.	DES0008/18	K2
Requiring Authority	Transpower New Zealand Limited	-
Area (ha)	1.96	-
Designated Purpose	National Grid Underground 110 kV Cables and Aboveground Cable Termination Structures and Ancillary Works – Protection only	-
Location	Puketaha Road	-
Legal Description	Lot 1 DPS 75657, Lot 4 DPS 64084	-
Status Comment (lapsed/rollover/modify/new)	Carry forward	-
Underlying Environmental Area	Rural	-
Map No	N/A – IntraMaps. The Hamilton to Meremere Underground Cable and Cable Termination Structures is not yet shown on the IntraMaps.	Designation to be shown on IntraMaps. Section of overhead transmission line that was replaced to be removed from IntraMaps. GIS shape file provided.

TABLE 2A: MINOR CORRECTIONS TO CONDITIONS FOR HAMILTON TO MEREMERE UNDERGROUND CABLE AND CABLE TERMINATION STRUCTURES (K2)

Condition number	Condition	Action	Reason(s)	Details
1	As soon as practicable following completion of construction of the underground cable, the aboveground cable termination structures and ancillary works, the requiring authority shall provide as-built plans to the Council.	Delete	The condition is now unnecessary, because construction has occurred. The designation conditions can be simplified by removing this completed condition.	N/A
Advice Note	Where section 176 approvals are required by utility operators (other than the requiring authority) for works within the designation the requiring authority will provide a timely response, in order to facilitate co-ordination of section 176 approvals sought by the utility operator and the Corridor Access Request process.	Delete	The advice note is now unnecessary as the construction has occurred and Condition 1 complied with. The advice note repeats what is already required by the RMA.	N/A

TABLE 3: HUNTLY OUTDOOR SWITCHYARD (K3)

Transpower requests that the designation for the Huntly Outdoor Switchyard, being a designation that has not lapsed, be rolled over without modification. There are no conditions attached this designation, and no conditions are proposed. A more specific location is sought to be noted in the Proposed Plan, as detailed below.

Information Requirement	Operative Plan	Minor Corrections Requested
Ref.	K3	-
Requiring Authority	Transpower New Zealand Limited	-
Area (ha)	2.1726	-
Designated Purpose	Huntly Outdoor Switchyard	-
Location	Power station, Huntly	Power station Te Ohaki Road , Huntly
Legal Description	Section 1 SO 59597, Pt Lot 1 DPS 73530	-
Status Comment (lapsed/rollover/modify/new)	Carry forward	-
Underlying Environmental Area	Heavy Industrial	-
Map No	N/A – IntraMaps. The Huntly Outdoor Switchyard designation is shown correctly on the IntraMaps of the Operative Waikato District Plan.	-

TABLE 4: MEREMERE SWITCHING STATION (K4)

Transpower requests that the designation for the Meremere Switching Station, being a designation that has not lapsed, be rolled over without modification. There are no conditions attached this designation, and no conditions are proposed. A more specific location is sought to be noted in the Proposed Plan, as detailed below.

Information Requirement	Operative Plan	Minor Corrections Requested
Ref.	K4	-
Requiring Authority	Transpower New Zealand Limited	-
Area (ha)	0.6065	-
Designated Purpose	Meremere Switching Station	-
Location	Power station, Meremere	Power station Taniwha Street, Meremere
Legal Description	Section 1 SO 59595	-
Status Comment (lapsed/rollover/modify/new)	Carry forward	-
Underlying Environmental Area	Heavy Industrial	-
Map No	N/A – IntraMaps. The Meremere Switching Station designation is shown correctly on the IntraMaps of the Operative Waikato District Plan.	-

TABLE 5A: TE KOWHAI SUBSTATION (K5)

Transpower requests that the designation for the Te Kowhai Substation, being a designation that has not lapsed, be rolled over without modification. A more specific location is sought to be noted in the Proposed Plan, as detailed below, along with some changes to the conditions as detailed below. Note that the changes to conditions for the Te Kowhai Substation (K5) and the Te Kowhai Deviation A 220kV High Voltage Transmission Line (K6) apply to both designations, as set out and explained after Table 5A below.

Information Requirement	Operative Plan	Minor Corrections Requested
Ref.	K5	-
Requiring Authority	Transpower New Zealand Limited	-
Area (ha)	16.0334	-
Designated Purpose	Te Kowhai Substation (refer to Council file 69 03 022 for conditions on the designation)	-
Location	Bedford Road, Te Kowhai	196 Bedford Road, Te Kowhai
Legal Description	Lot 2 DP 343406, CT 178070	-
Status Comment (lapsed/rollover/modify/new)	Carry forward	-
Underlying Environmental Area	Rural	-
Map No	N/A – IntraMaps. The Te Kowhai Substation designation is shown correctly on the IntraMaps of the Operative Waikato District Plan.	-

TABLE 5B: TE KOWHAI DEVIATION A 220kV HIGH VOLTAGE TRANSMISSION LINE (K6)

Transpower requests that the designation for the Te Kowhai Deviation A, being a designation that has not lapsed, be rolled over without modification. A more specific legal description is sought to be noted in the Proposed Plan, as detailed below.

Information Requirement	Operative Plan	Minor Corrections Requested
Ref.	K6	-
Requiring Authority	Transpower New Zealand Limited	-
Area (ha)	12.3 (approx.)	-TBC
Designated Purpose	Te Kowhai A 220kV High Voltage Transmission Line (refer to Council file 69 03 022 for conditions on the designation)	-
Location	Waipa Heights Road	-
Legal Description	Allot 58B2B2 Waipa Parish ML 17224, Lot 11 DPS 62333, Allot 48A Waipa Parish, Allot 48B Waipa Parish, Part Waipa Heights Road, Part of Bedford Road, Lot 1 DP 12498 and Lot 2 DP 12498	Allot 58B2B2 Waipa Parish ML 17224, Lot 11 DPS 62333, Allot 48A Waipa Parish, Allot 48B Waipa Parish, Part Waipa Heights Road, Part of Bedford Road, Lot 1 DP 12498 and Lot 2 DP 12498 <u>Allot 48A Waipa Parish, Allot 48B Waipa Parish, Section 1 SO Plan 383836, Lot 1 DP 12498, Lot 1, 3 DP 343406, Lot 11-12 DPS 62333, Lot 2 DP 343406, Lot 3-4 DP 338018, Part Bedford Road</u>
Status Comment (lapsed/rollover/modify/new)	Carry forward	-
Underlying Environmental Area	Rural	-
Map No	N/A – IntraMaps. The Te Kowhai Deviation A 220kV High Voltage Transmission Line	-

Information Requirement	Operative Plan	Minor Corrections Requested
	designation is shown correctly on the IntraMaps of the Operative Waikato District Plan.	

TABLE 5C: MINOR CORRECTIONS TO CONDITIONS FOR TE KOWHAI SUBSTATION (K5) AND TE KOWHAI DEVIATION A 220KV HIGH VOLTAGE TRANSMISSION LINE (K6):

In rolling over the designations for the Te Kowhai Substation and Te Kowhai Deviation A 220kV high voltage transmission line, Transpower has simplified the conditions that apply. The actions required by many of the conditions have been completed – as they related to construction activities that have occurred or were conditions of a limited duration. Other conditions require updating, as they refer to documents that have been superseded. Deletion of completed conditions and updating of others does not modify the designation in any way.

Condition number	Sub-heading	Action	Reason(s)	Details
1	Description of works	Delete	The condition is now unnecessary, because construction has occurred. The designation conditions can be simplified by removing this completed condition.	N/A
2.1	Outline Plan	Delete	The condition is now unnecessary, because construction has occurred. The designation conditions can be simplified removing this completed condition.	N/A
3.1(a) and (b)	Limits to the Scope of Designation	Retain	Ongoing compliance conditions to be retained.	N/A
4.1, 4.2(a)-(d)	Height	Retain	Ongoing compliance conditions to be retained.	N/A

Condition number	Sub-heading	Action	Reason(s)	Details
5.1	Transmission Tower Finish	Retain	Ongoing compliance conditions to be retained.	N/A
6.1	Substation Switchyard	Retain	Ongoing compliance conditions to be retained.	N/A
7.1	Resource Consents	Delete	The condition is now unnecessary, because construction has occurred. The designation conditions can be simplified by removing this completed condition.	N/A
8.1 and 8.2	Landscape Mitigation	Delete	The condition is now unnecessary, because construction has occurred. The designation conditions can be simplified by removing this completed condition.	N/A
8.3, 8.4 and 8.5	Landscape Mitigation	Retain	Ongoing compliance conditions to be retained.	N/A
9.1	Lighting	Retain	Ongoing compliance condition to be retained.	N/A
9.2	Lighting	Delete	The condition is now unnecessary, because construction has occurred. The designation conditions can be simplified by removing this completed condition.	N/A
10.1	Noise	Retain	Ongoing compliance condition to be retained.	N/A
10.2	Noise	Update	Update the condition to refer to the current New Zealand Standard for assessing noise. Note that the cross reference to condition number 10.1 will need to be updated.	<i>Subject to the allowance already made in 10.1 for special audible characteristics, noise levels shall be measured in accordance with the requirements of 'NZS6801:199419942008 Measurement of Sound' and assessed in accordance with the requirements of</i>

Condition number	Sub-heading	Action	Reason(s)	Details
				<i>'NZS6802:199119912008 Assessment of Environmental Sound'. Noise from construction activities shall not exceed the limits recommended in, and shall be measured and assessed in accordance with, 'NZS6803:1999 Acoustics – Construction Noise'.</i>
10.3	Noise	Retain	Even though this condition has been completed post construction, it should be retained because it is relevant to the procedures required by condition 10.5. Note that the condition cross reference will need to be renumbered.	N/A
10.4	Noise	Retain	This condition is related to Condition 10.3 and the required actions have been completed. The designation conditions can be simplified by removing this completed condition.	N/A
10.5	Noise	Retain	Ongoing compliance condition to be retained.	N/A
11.1	EMF (Electromagnetic Fields)	Update	Update to refer to the current version of the standard for measuring electric and magnetic fields. This correction is consistent with policy 9 of the National Policy Statement on Electricity Transmission which provides:	<i>"In those areas of the site to which the public has access, electric and magnetic field strengths shall comply with the guidelines for public exposure to electric and magnetic fields as published in 19982010 by the International Commission on Non-Ionizing Radiation Protection (ICNIRP)."</i>

Condition number	Sub-heading	Action	Reason(s)	Details
			“Provisions dealing with electric and magnetic fields associated with the electricity transmission network must be based on the International Commission on Non-Ionising Radiation Protection Guidelines for limiting exposure to time varying electric magnetic and electromagnetic fields (up to 300 GHz) (Health Physics, 1998, 74(4): 494-522) and recommendations from the World Health Organisation monograph Environmental Health Criteria (No 328, June 2007) or revisions thereof and any applicable New Zealand standards or national environmental standards.”	
11.2	EMF (Electromagnetic Fields)	Delete	This condition was for a limited duration and this time has now passed. The designation conditions can be simplified by removing this completed condition.	N/A
11.3	EMR (Electromagnetic Radiation)	Retain	Ongoing compliance condition to be retained.	N/A
11.4	Security Fence and Signs	Delete	This condition has been completed and is no longer necessary. The designation conditions can be simplified by removing this completed condition.	N/A
11.6	Hazardous Substances	Retain	Ongoing compliance condition to be retained.	N/A

Condition number	Sub-heading	Action	Reason(s)	Details
11.7	Hazardous Substances	Delete	This condition is now unnecessary because construction has occurred. The designation conditions can be simplified by removing this completed condition.	N/A
12.1	Roading	Delete	This condition is now unnecessary because construction has occurred. The designation conditions can be simplified by removing this completed condition.	N/A
12.2	Roading	Delete	This condition is now unnecessary because construction has occurred. The designation conditions can be simplified by removing this completed condition.	N/A
12.3	Roading	Delete	This condition is now unnecessary because construction has occurred. The designation conditions can be simplified by removing this completed condition.	N/A
13.1	Engineering	Delete	This condition is now unnecessary because construction has occurred. The designation conditions can be simplified by removing this completed condition.	N/A
13.2	Engineering	Delete	This condition is now unnecessary because construction has occurred. The designation conditions can be simplified by removing this completed condition.	N/A

Condition number	Sub-heading	Action	Reason(s)	Details
13.3	Engineering	Delete	This condition is now unnecessary because construction has occurred. The designation conditions can be simplified by removing this completed condition.	N/A
14.1	Archaeological	Delete	This condition is now unnecessary because construction has occurred. The designation conditions can be simplified by removing this completed condition.	N/A
15.1	Recovery of Costs	Delete	This condition is now unnecessary because construction has occurred. The designation conditions can be simplified by removing this completed condition.	N/A

TABLE 6: OHINEWAI SWITCHING STATION (K7)

Transpower requests that the designation for the Ohinewai Switching Station, being a designation that has not lapsed, be rolled over without modification. A more specific legal description, correct site area and address are proposed to be incorporated, along with some updates to conditions to reflect the fact that construction is complete and reference current guidelines and standards.

Information Requirement	Operative Plan	Minor Corrections Requested
Ref.	K7	-
Requiring Authority	Transpower New Zealand Limited	-
Area (ha)	120	28.695
Designated Purpose	Ohinewai Switching Station	Ohinewai Switching Station <u>(refer to Council file for conditions on the designation)</u>
Location	32 Storey Road, Waiterimu	532 480 Storey Road, Waiterimu
Legal Description	Lots 3 and 4 DP 37383, Lot 2 DPS 89160	<u>Lot 3-4 DP 459363</u>
Status Comment (lapsed/rollover/modify/new)	Carry forward	-
Underlying Environmental Area	Rural	-
Map No	N/A – IntraMaps The Ohinewai Switching Station designation is shown correctly on the IntraMaps of the Operative Waikato District Plan.	-

TABLE 6A: MINOR CORRECTIONS TO CONDITIONS FOR OHINEWAI SWITCHING STATION (K7)

In rolling over the designations for the Ohinewai Switching Station, Transpower has simplified the conditions that apply. The actions required by many of the conditions have been completed – as they related to construction activities that have occurred or were conditions of a limited duration. Other conditions require updating, as they refer to documents that have been superseded. Deletion of completed conditions and updating of others does not modify the designation in any way.

Condition number	Sub-heading	Action	Reason(s)	Details
1.1	Description of works	Delete	The condition is now unnecessary, because construction has occurred. The designation conditions can be simplified by removing this completed condition.	N/A
2.1	Outline Plan	Delete	The condition is now unnecessary, because construction has occurred. The designation conditions can be simplified by removing this completed condition.	N/A
3.1	Limits to the Scope of Designation	Retain	Ongoing compliance condition to be retained.	N/A
4.1	Height	Retain	Ongoing compliance condition to be retained.	N/A
4.2	Height	Retain	Ongoing compliance condition to be retained.	N/A
5.1	Landscape Mitigation	Delete	The condition is now unnecessary, because construction has occurred. The designation conditions can be simplified by removing this completed condition.	N/A
5.2	Landscape Mitigation	Delete	The condition is now unnecessary, because construction has occurred. The designation conditions can be simplified by removing this completed condition.	N/A
5.3	Landscape Mitigation	Delete	The condition is now unnecessary, because construction has occurred and the post construction reporting requirements have been	N/A

Condition number	Sub-heading	Action	Reason(s)	Details
			completed. The designation conditions can be simplified by removing this completed condition.	
5.4	Landscape Mitigation	Retain	Ongoing compliance condition to be retained.	N/A
5.5	Landscape Mitigation	Retain	Ongoing compliance condition to be retained.	N/A
6.1	Lighting	Retain	Ongoing compliance condition to be retained.	N/A
6.2	Lighting	Delete	The condition is now unnecessary, because construction has occurred. The designation conditions can be simplified by removing this completed condition.	N/A
7.1	Noise	Retain	Ongoing compliance condition to be retained.	N/A
7.2	Noise	Retain	Ongoing compliance condition to be retained.	N/A
7.3	Noise	Update	Update the condition to refer to the current New Zealand Standard for assessing noise.	<i>"Noise levels shall be measured in accordance with the requirements of 'NZS6801:19942008 Measurement of Sound' and assessed in accordance with the requirements of 'NZS6802:19942008 Assessment of Environmental Sound'."</i>
8.1	Earthworks and Engineering	Delete	The condition is now unnecessary, because construction has occurred. The designation conditions can be simplified by removing this completed condition.	N/A
8.2	Earthworks and Engineering	Delete	The condition is now unnecessary, because construction has occurred. The designation conditions can be simplified by removing this completed condition.	N/A

Condition number	Sub-heading	Action	Reason(s)	Details
9.1	Stormwater Management	Delete	The condition is now unnecessary, because construction has occurred. The designation conditions can be simplified by removing this completed condition.	N/A
9.2	Stormwater Management	Delete	The condition is now unnecessary, because construction has occurred. The designation conditions can be simplified by removing this completed condition.	N/A
10.1	Archaeological	Delete	The condition is now unnecessary, because construction has occurred. The designation conditions can be simplified by removing this completed condition.	N/A
11.1	Roading & Traffic	Delete	The condition is now unnecessary, because construction has occurred. The designation conditions can be simplified by removing this completed condition.	N/A
12.1	Waikato District Council Legal Road (unformed)	Delete	The condition is now unnecessary, because construction has occurred. The designation conditions can be simplified by removing this completed condition.	N/A
12.3	Waikato District Council Legal Road (unformed)	Delete	The condition is now unnecessary, because construction has occurred. The designation	N/A

Condition number	Sub-heading	Action	Reason(s)	Details
			conditions can be simplified by removing this completed condition.	
12.4	Waikato District Council Legal Road (unformed)	Retain	Ongoing compliance condition to be retained.	N/A
13.1	Health & Safety	Retain	Ongoing compliance condition to be retained.	N/A
13.2	Health & Safety	Update	<p>Update to refer to the current version of the standard for measuring electric and magnetic fields.</p> <p>This correction is consistent with policy 9 of the National Policy Statement on Electricity Transmission which provides:</p> <p>“Provisions dealing with electric and magnetic fields associated with the electricity transmission network must be based on the International Commission on Non-Ionising Radiation Protection Guidelines for limiting exposure to time varying electric magnetic and electromagnetic fields (up to 300 GHz) (Health Physics, 1998, 74(4): 494-522) and recommendations from the World Health Organisation monograph Environmental Health Criteria (No 328, June 2007) or revisions thereof and any applicable New Zealand standards or national environmental standards.”</p>	<p><i>“Electric and magnetic fields shall comply with guidelines for public exposure to electric and magnetic fields as published in 19982010 by the International Commission on Non-Ionising Radiation Protection (ICNIRP).”</i></p>

Condition number	Sub-heading	Action	Reason(s)	Details
13.3	Health & Safety	Delete	The condition is now unnecessary, because construction has occurred. The designation conditions can be simplified by removing this completed condition.	N/A
13.4	Health & Safety	Delete	The condition is now unnecessary, because construction has occurred. The designation conditions can be simplified by removing this completed condition.	N/A
14.1	Hazardous Substances	Retain	Ongoing compliance condition to be retained.	N/A
15.1	Community Liaison	Delete	The condition is now unnecessary, because construction has occurred. The designation conditions can be simplified by removing this completed condition.	N/A
16.1	Recovery of Costs	Delete	The condition is now unnecessary, because construction has occurred. The designation conditions can be simplified by removing this completed condition.	N/A

TABLE 7: BROWNHILL ROAD TO WHAKAMARU NORTH OVERHEAD TRANSMISSION LINE (K8)

Transpower requests that the designation for the Brownhill Road to Whakamaru North Overhead Transmission Line, being a designation that has not lapsed, be rolled over without modification.

Information Requirement	Operative Plan	Minor Corrections Requested
Ref.	K8 and 152	-
Requiring Authority	Transpower New Zealand Limited	-
Area (ha)		-
Designated Purpose	400kV-capable transmission line between Auckland and Whakamaru as part of upper North Island Grid Upgrade project (refer to Council file DES0011/07 for legal descriptions of land and conditions on the designation)	400kV-capable transmission line between Auckland and Whakamaru as part of upper North Island Grid Upgrade project (refer to Council file DES0011/07 for legal descriptions of land and conditions on the designation) <u>Brownhill Road to Whakamaru North Overhead Transmission Line (refer to Council file DES0011/07 for legal descriptions of land and conditions on the designation)</u>
Location	That part of the line within Waikato District	-
Legal Description	Refer to separate table	Refer to separate table
Status Comment (lapsed/rollover/modify/new)	Carry forward	-
Underlying Environmental Area	Various	-
Map No	N/A – IntraMaps. The Brownhill Road to Whakamaru North Overhead Transmission Line designation is shown correctly on the	-

Information Requirement	Operative Plan	Minor Corrections Requested
	IntraMaps of the Operative Waikato District Plan.	

TABLE 7A LEGAL DESCRIPTIONS FOR BROWNHILL ROAD TO WHAKAMARU NORTH OVERHEAD TRANSMISSION LINE (WITHIN WAIKATO DISTRICT)

	Legal description
Brownhill Road to Whakamaru North Overhead Transmission Line	Allot 164 Whangamarino PARISH, Allot 267 Taupiri PARISH, Allot 277 Taupiri PARISH, Allot 286 Taupiri PARISH, Allot 287 Taupiri PARISH, Allot 291 Taupiri PARISH, Allot 300 Taupiri PARISH, Allot 301 Taupiri PARISH, Allot 31 Maramarua PARISH, Allot 377 Whangamarino PARISH, Allot 573 Taupiri PARISH, Allot 663 Whangamarino PARISH Allot 694 Taupiri PARISH, Allot 695 Taupiri PARISH, Allot 748 Taupiri PARISH, Crown Land Deposited Plan South Auckland 51231, Crown Land Survey Office Plan 34936 Crown Land Survey Office Plan 34936, Lot 1 DP 11238, Lot 1 DP 18570, Lot 1 DP 24572, Lot 1 DP 29065, Lot 1 DP 29348, Lot 1 DP 32767, Lot 1 DP 32851, Lot 1 DP 368595, Lot 1 DP 439420, Lot 1 DP 439728, Lot 1 DPS 10847, Lot 1 DPS 1656, Lot 1 DPS 2283, Lot 1 DPS 23254, Lot 1 DPS 3347, Lot 1 DPS 3501, Lot 1 DPS 44792, Lot 1 DPS 51231, Lot 1 DPS 56868, Lot 1 DPS 6244, Lot 1 DPS 63912, Lot 1 DPS 67106, Lot 1 DPS 73791, Lot 1 DPS 78377, Lot 1 DPS 83406, Lot 1 DPS 83570, Lot 1 DPS 85600, Lot 1 DPS 89880, Lot 1 DPS 90141, Lot 1 DPS 91554, Lot 1 DPS 9993, Lot 2 DP 18570, Lot 2 DP 22291, Lot 2 DP 27671, Lot 2 DP 29348, Lot 2 DP 29664, Lot 2 DP 322420, Lot 2 DP 32767, Lot 2 DP 330958, Lot 2 DP 417722, Lot 2 DP 439420, Lot 2 DP 439728, Lot 2 DP 442233, Lot 2 DP 451941, Lot 2 DP 457692, Lot 2 DP 462151, Lot 2 DPS 1097, Lot 2 DPS 17834, Lot 2 DPS 19705, Lot 2 DPS 2283, Lot 2 DPS 6630, Lot 2 DPS 67106, Lot 2 DPS 724, Lot 2 DPS 73791, Lot 2 DPS 78377, Lot 2 DPS 81308, Lot 2 DPS 89880, Lot 3 DP 22291, Lot 3 DP 32767, Lot 3 DP 363753, Lot 3 DP 36580, Lot 3 DP 369411, Lot 3 DP 378206, Lot 3 DP 433501, Lot 3 DPS 1453, Lot 3 DPS 68851, Lot 3 DPS 74265, Lot 3 DPS 81308, Lot 4 DP 32767, Lot 4 DP 332466, Lot 4 DP 369411, Lot 4 DPS 23254, Lot 4 DPS 81308, Lot 4 DPS 86339, Lot 4 DPS 89880, Lot 7 DP 33199, Pt Allot 162 Whangamarino PARISH, Pt Allot 163 Whangamarino PARISH, Pt Allot 270 Taupiri PARISH, Pt Allot 272 Taupiri PARISH, Pt Allot 50 Maramarua PARISH, Pt Allot 57 Maramarua PARISH, Pt Allot 6 Maramarua PARISH, Pt Land on DP 3101, Pt Land on DP 7851, Pt Lot 1 DP 21817, Pt Lot 1 DP 22291, Pt Lot 1 DP 26041, Pt Lot 1 DP 32840, Pt Lot 3 DP 16646, Pt Lot 3 DP 23291, Pt Lot 8 DP 15482, Pt Sec 12 Taniwha SETTLEMENT, Pt Sec 1s Tangao

	Legal description
	SETTLEMENT, Pt Sec 5 Mangakura SETTLEMENT, Pt Tauhei 7A6B2, RD SO 422579, Sec 1 SO 437841, Sec 13 Mangakura SETTLEMENT, Sec 16 Blk XIV Paeroa SD, Sec 17 Blk V Piako SD, Sec 2 Taniwha SETTLEMENT, Sec 3 Taniwha SETTLEMENT, Sec 4 Mangakura SETTLEMENT, Sec 4 Taniwha SETTLEMENT, Sec 5 Taniwha SETTLEMENT, Tauhei 7A5B2C1, Tauhei 7A5B2C3, Tauhei 7A6A2, Part Taniwha Road, Part Mangapiko Valley Road, Part Proctor Road, Part Coalfields Road, Part Waerenga Road, Part Riddell Road, Part Matahuru Road, Part Tainui Road, Part Symes Road, Part Tahuna Road, Part Mangatea Road, Part State Highway 2, Part Manuel Road, Part Flaxmill Road, Part Taniwha Road

TABLE 7B: MINOR CORRECTIONS TO CONDITIONS FOR BROWNHILL ROAD TO WHAKAMARU NORTH OVERHEAD TRANSMISSION LINE (K8)

In rolling over the designations for Brownhill Road to Whakamaru North Overhead Transmission Line, Transpower has simplified the conditions that apply. The actions required by many of the conditions have been completed – as they related to construction activities that have occurred or were conditions of a limited duration. Other conditions require updating, as they refer to documents that have been superseded. Deletion of completed conditions and updating of others does not modify the designation in any way.

Condition number	Sub-heading	Action	Reason(s)	Details
1-13 inclusive	Documents, tower heights and locations, activities under the line, cultural/spiritual, archaeology, social	Delete	These conditions are now unnecessary, because construction has occurred. The designation conditions can be simplified by removing these completed conditions.	N/A
14	Electric and Magnetic Fields	Update	Update to refer to the current version of the standard for measuring electric and magnetic fields.	<i><u>The Any new works or equipment shall be designed and constructed operated to limit the EMF exposure to the International Commission on Non-</u></i>

Condition number	Sub-heading	Action	Reason(s)	Details
			<p>This correction is consistent with policy 9 of the National Policy Statement on Electricity Transmission which provides:</p> <p>“Provisions dealing with electric and magnetic fields associated with the electricity transmission network must be based on the International Commission on Non-Ionising Radiation Protection Guidelines for limiting exposure to time varying electric magnetic and electromagnetic fields (up to 300 GHz) (Health Physics, 1998, 74(4): 494-522) and recommendations from the World Health Organisation monograph Environmental Health Criteria (No 328, June 2007) or revisions thereof and any applicable New Zealand standards or national environmental standards.”</p>	<p><i>Ionising Radiation Protection Guidelines for limiting exposure to time-varying electric, magnetic, and electromagnetic electric and magnetic fields (up to 300 GHz)(Health Physics, 1998, 74(4): 494-522), (1 Hz to 100 kHz) (ICNIRP Guidelines; (Health Physics 99(6):818-836; 2010). At 50 Hz that includes the public reference levels of 5kV/m for electric fields and 4200 μt for magnetic flux density at one metre above ground level under maximum normal operating conditions (i.e., when there are no faults in the transmission system).</i>”</p>
15	Electric and Magnetic Fields	Retain	Ongoing compliance condition to be retained.	N/A
16	Earth potential rise / induced currents	Update	This condition refers to regulations 58, 60, 69 87 of the Electricity Regulations 1997, which have been replaced. These regulations do not translate into specific regulations in the Electricity Safety Regulations 2010. Transpower has therefore amended the condition to refer to the regulations in their entirety rather than referring to individual provisions.	“ In designing and constructing the line, Transpower shall give consideration to third party conductive structures and services to ensure compliance with regulations 58, 60, 69 and 87 of the Electricity Regulations 1997 as in force at the date of confirmation of the designation. ”

Condition number	Sub-heading	Action	Reason(s)	Details
				<u>“Any new works or equipment shall be designed and constructed to comply with the Electricity Safety Regulations 2010.”</u>
17	Earth potential rise / induced currents	Update	Construction has occurred so condition 17 (which relates to compliance with the relevant standard for electrical hazards on metallic pipelines needs to be updated to refer to “new works or equipment”). This standard referred to is also now out of date. The condition should be amended to refer to “new works or equipment” and to latest version of the standard.	<i>“The Any new works or equipment shall be designed and constructed so as not to cause existing assets of other utilities to be noncompliant with AS/NZS 4853:20002012 – Electrical Hazard on Metallic Pipelines.”</i>
18	Earth potential rise / induced currents	Delete	This condition is now unnecessary, because construction has occurred. The designation conditions can be simplified by removing this completed condition.	N/A
19	Radio frequency interference	Update	Construction has occurred so the condition should be amended to refer to “new works or equipment”.	<u>“Any new All works or equipment shall be designed to comply with NZS6869:2004 Limits & Measurement Methods of Electromagnetic Noise from High-Voltage a.c. Power Systems, 0.15 to 1000 MHz.”</u>
20	Operational Noise	Retain	Ongoing compliance condition to be retained.	N/A
21	Operational Noise	Update	Update the condition to refer to the current New Zealand Standard for measuring and assessing noise.	“Sound levels shall be measured and assessed in accordance with NZS6801:1991 Measurement of Sound <u>NZS6801:2008 Acoustics – Measurement of Environmental</u>

Condition number	Sub-heading	Action	Reason(s)	Details
				<u>Sound and NZS6802:2008 Acoustics – Assessment of Environmental Sound.</u>
22-43	Landscape mitigation – general, landscape mitigation – private land, landscape mitigation – public land, pre-construction activities, Construction Management Plan	Delete	These conditions are now unnecessary, because construction has occurred. The designation conditions can be simplified by removing these completed conditions.	N/A
44	Construction and Maintenance Noise	Retain	Ongoing compliance condition to be retained	N/A
45	Construction and Maintenance Noise	Retain	Ongoing compliance condition to be retained	Cross-reference to Condition 44 may need to be updated.
46	Construction and Maintenance Noise	Update	To ensure that the noise management plan would apply to significant earthworks related to significant construction works i.e. so that the two are commensurate.	<i>“Prior to any significant construction work taking place, including any <u>significant associated</u> earthworks, a noise management plan applicable to the construction and commissioning stages shall be prepared for the whole of the line, with the assistance of a suitably qualified and experienced person. The plan shall set out the management procedures in terms of section 8 and Annex E of NZS6803:1999, and the works shall be undertaken in accordance with that noise management plan.”</i>

Condition number	Sub-heading	Action	Reason(s)	Details
47	Construction and Maintenance Noise	Retain	Ongoing compliance condition to be retained	Cross-reference to Condition 46 may need to be updated.
48-55	Vibration, Aviation, Traffic Management Plan for road crossings and local roads, construction entranceways off public roads	Delete	The condition is now unnecessary, because construction has occurred. The designation conditions can be simplified by removing these completed conditions.	N/A

If there are any queries on the above, or the Waikato District Council requires any further information, please do not hesitate to contact me on (04) 590 7434 or at sarah.shand@transpower.co.nz.

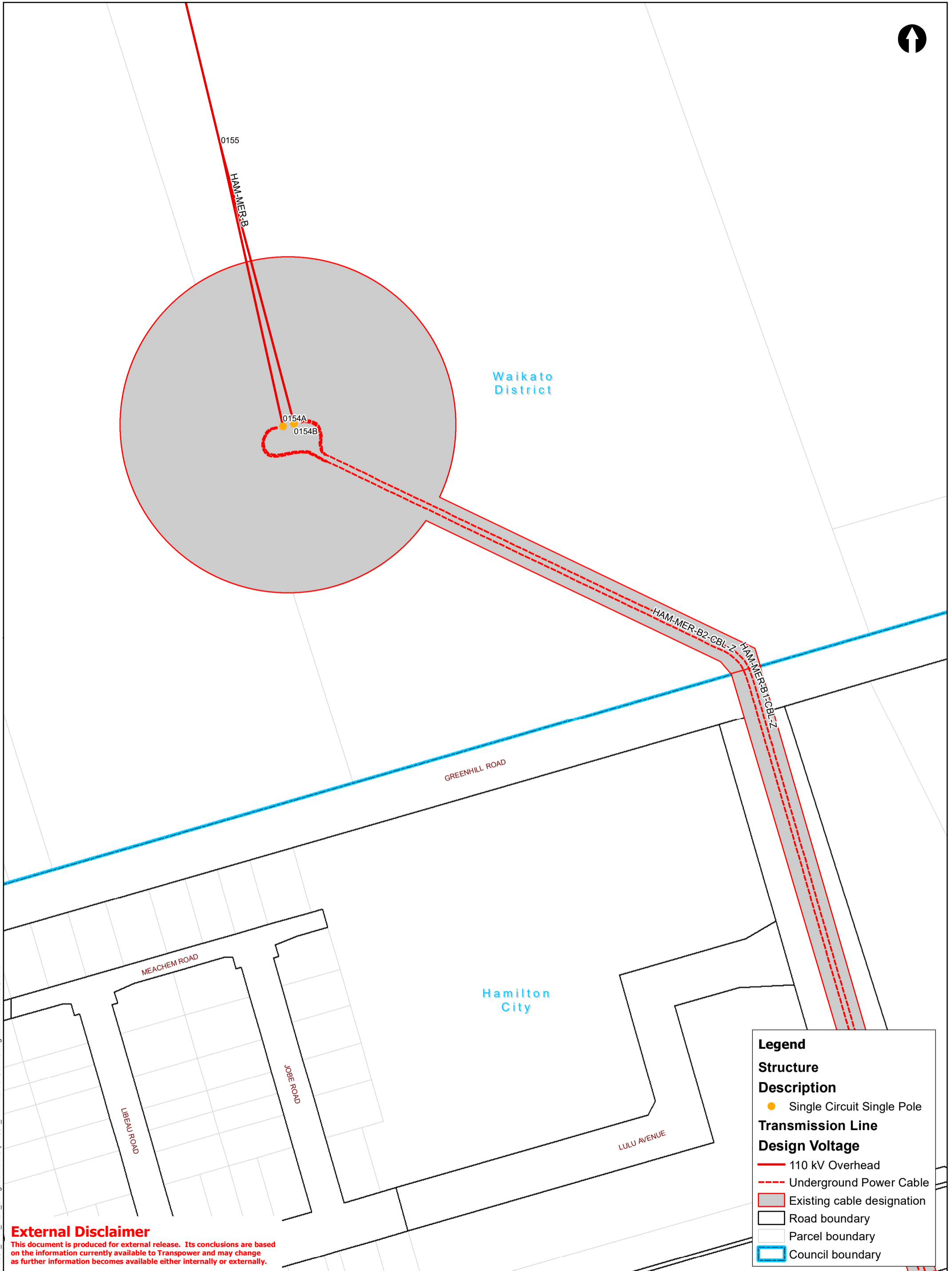
Yours faithfully,

A handwritten signature in blue ink, appearing to read 'S. Shand', written in a cursive style.

Sarah Shand
Environmental Planner
TRANSPOWER NEW ZEALAND LIMITED

Attachment A: K2 Designation Map
Attachment B: K2 Certificates of Title

Attachment A
K2 Designation Map



Legend	
Structure	Description
●	Single Circuit Single Pole
Transmission Line	
Design Voltage	
—	110 kV Overhead
- - -	Underground Power Cable
■	Existing cable designation
□	Road boundary
□	Parcel boundary
□	Council boundary

External Disclaimer

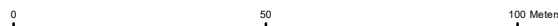
This document is produced for external release. Its conclusions are based on the information currently available to Transpower and may change as further information becomes available either internally or externally.

Transpower New Zealand Ltd: Designation of "National Grid Underground 110kV Cables and Above Ground Termination Structures and Ancillary works"



TRANSPOWER
Prepared by: Geospatial & Drawings

Projection: NZTM 2000 Scale: 1:1,500 Plan Size: A3P



COPYRIGHT © 2018 TRANSPOWER NEW ZEALAND LIMITED. ALL RIGHTS RESERVED
This document is protected by copyright vested in Transpower New Zealand Limited ("Transpower"). No part of the document may be reproduced or transmitted in any form by any means including, without limitation, electronic, photocopying, recording or otherwise, without the prior written permission of Transpower. No information embodied in the documents which is not already in the public domain shall be communicated in any manner whatsoever to any third party without the prior written consent of Transpower. Any breach of the above obligations may be restrained by legal proceedings seeking remedies including injunctions, damages and costs.

Date: 1/06/2018 Drawn by: aldrichh

Path: I:\Spatial\GIS\Projects\17064_HAM_MER_Designation\17064_HAM_MER_B Cable Designation WaikatoDC.mxd

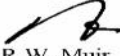
Attachment B

K2 Certificates of Title



COMPUTER FREEHOLD REGISTER UNDER LAND TRANSFER ACT 1952




R. W. Muir
Registrar-General
of Land

Search Copy

Identifier SA59B/381
Land Registration District South Auckland
Date Issued 10 May 1996

Prior References

SA468/275

Estate	Fee Simple
Area	7.4000 hectares more or less
Legal Description	Lot 4 Deposited Plan South Auckland 64084

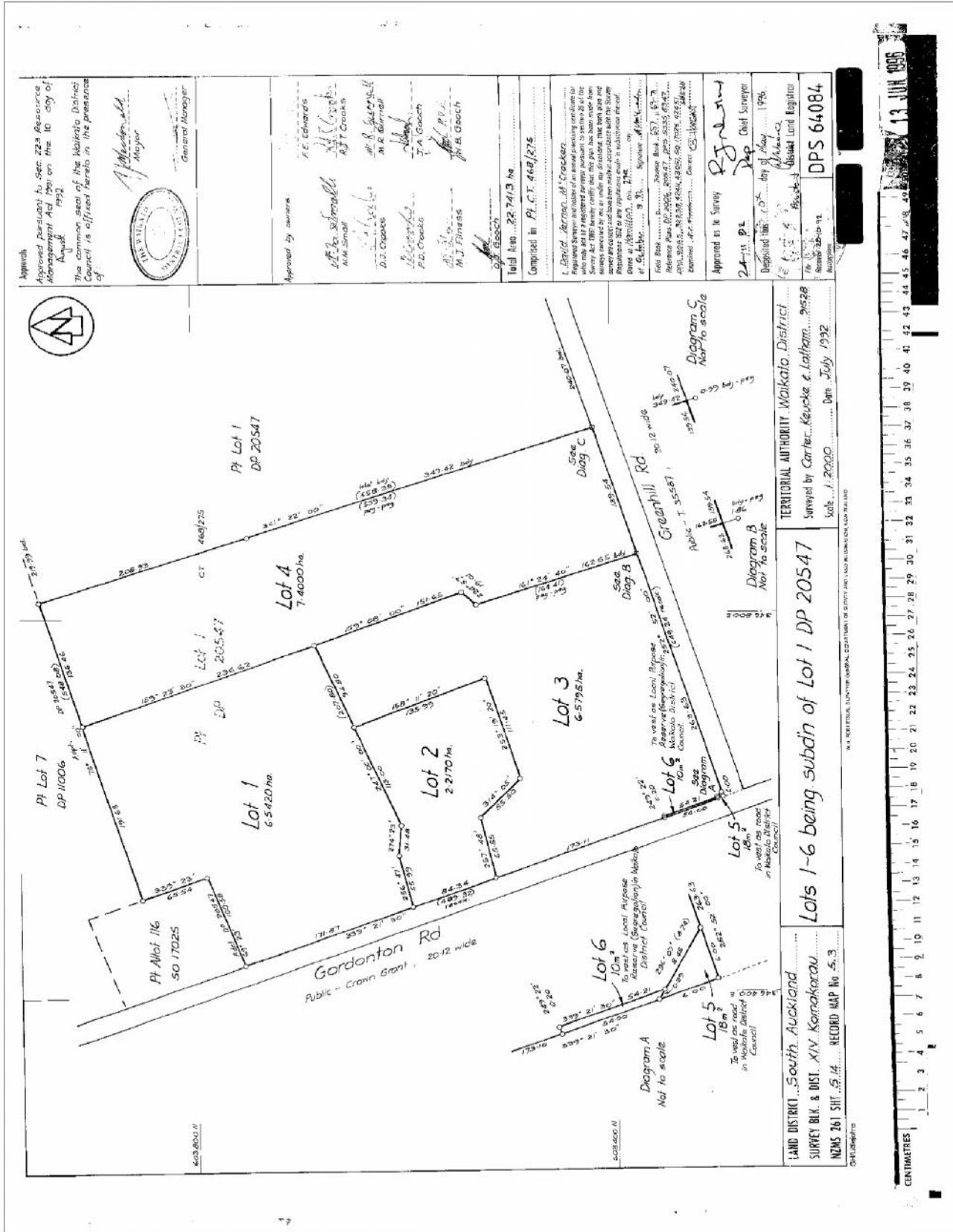
Proprietors

PCL Limited

Interests

10510691.1 Mortgage to ANZ Bank New Zealand Limited - 9.8.2016 at 5:28 pm

Subject to a right (in gross) to convey, discharge and earth electricity over part marked L on DP 503542 in favour of Transpower New Zealand Limited created by Easement Instrument 10700635.4 - 13.2.2017 at 12:23 pm



LAND DISTRICT, South Auckland
 SURVEY BLK. & DIST. XV, Karamakara
 NEWS 761 SH. 5.14 RECORD MAP No 5.3

TERITORIAL AUTHORITY Waikato District
 Surveyed by Carter, Keocke & Latimer 2028
 Date July 1992

Lots 1-6 being subdiv of Lot 1 DP 20547

RECORD MAP No 5.3

Approved by Survey
 24.11.92
 Chief Surveyor

Approved by Council
 24.11.92
 District Land Registrar

DPS 64084

Scale 1:2000

CENTIMETRES

13 JUN 1992

Approved pursuant to Sec 224 Resource Management Act 1991 on the 16 day of August 1992.
 The Council of the Waikato District Council is advised hereto in the presence of



Approved by owners:
 F.E. Edwards
 M. R. Garsdale
 M. J. Fitness
 M. B. Gooch
 M. J. Small
 M. M. Small
 D. J. Crooks
 M. R. Garsdale
 M. J. Fitness
 M. B. Gooch
 M. J. Small
 M. M. Small
 D. J. Crooks
 M. R. Garsdale
 M. J. Fitness
 M. B. Gooch

Total Area 22.7413 ha
 Compiled in P.C.T. 468/275

I, David, Terrance, M. Crockett
 Surveyor, do hereby certify that this plan has been made in accordance with the provisions of the Resource Management Act 1991 and that the boundaries shown on this plan are correct and that the area of the land shown is correct.

Approved by the Survey
 24.11.92
 Chief Surveyor

Approved by Council
 24.11.92
 District Land Registrar

DPS 64084

Scale 1:2000

CENTIMETRES



COMPUTER FREEHOLD REGISTER UNDER LAND TRANSFER ACT 1952



R. W. Muir
Registrar-General
of Land

Search Copy

Identifier SA59B/382
Land Registration District South Auckland
Date Issued 10 May 1996

Prior References

SA468/275

Estate	Fee Simple
Area	12.8356 hectares more or less
Legal Description	Lot 1 Deposited Plan South Auckland 75657

Proprietors

PCL Limited

Interests

Fencing Covenant in Transfer B367098 - 12.9.1996 at 10:47 am

10510691.4 Mortgage to ANZ Bank New Zealand Limited - 9.8.2016 at 5:28 pm

Subject to a right (in gross) to convey electricity and telecommunications over part marked GA, GB and H on DP 503542 in favour of Transpower New Zealand Limited created by Easement Instrument 10700635.1 - 13.2.2017 at 12:23 pm

Subject to a right (in gross) to convey electricity and telecommunications over part marked IA, IB and H on DP 503542 in favour of Transpower New Zealand Limited created by Easement Instrument 10700635.3 - 13.2.2017 at 12:23 pm

Subject to a right (in gross) to convey, discharge and earth electricity over part marked GB, H, IB, JA and JB on DP 503542 in favour of Transpower New Zealand Limited created by Easement Instrument 10700635.4 - 13.2.2017 at 12:23 pm

10711528.1 CAVEAT BY TRANSPOWER NEW ZEALAND LIMITED - 22.2.2017 at 4:25 pm

