

TAAWHIA TE AO PAPAKAAINGA

Herangi whaanau - Ngaaruawaahia



THE VISION OF TE PUEA

OUR LEGACY

- Te Puaea and her people began building Tuurangawaewae Marae and the Papakaainga.
- Properties surrounding the marae were purchased to house whaanau.
- Four generations on we are still developing upon the foundations our tuupuna provided us.



WHAANAU WHAANUI



OUR VISION

To develop our environment to house, nurture, grow and sustain our generations, support our marae, our tribe, our people.

OUR MISSION

To live collectively on our own lands with financial, emotional and physical stability while raising our children to be steeped in te ao maori.

OUR VALUES

Kotahitanga -to be unified in purpose.

Kaitiakitanga - to conserve and protect the natural and physical resources in our care.

Aroha- to work in the best interests of our whaanau and achieve positive results for the collective good.

Rangimarie - to be considerate of all we think, say and do.

THE LOCATION

The Taawhia te ao papakaainga is on the corner of Edward and King streets, a two minute drive from the Ngaaruawaahia town centre. Ngaaruawaahia is situated at the junction of the Waikato and Waipa Rivers in the central Waikato basin at the seat of the Kiingitanga and Tuurangawaewae Marae.

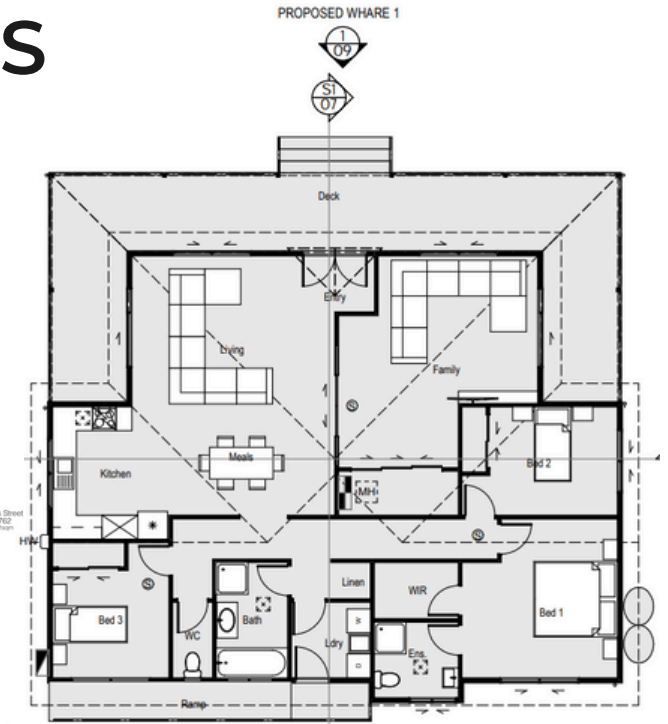
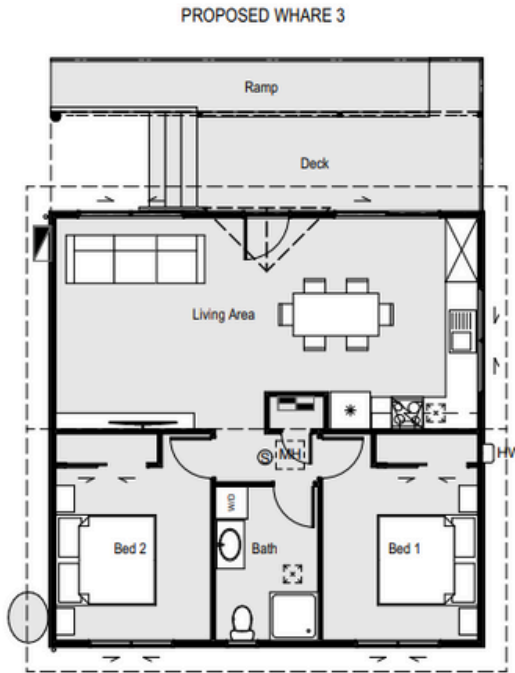
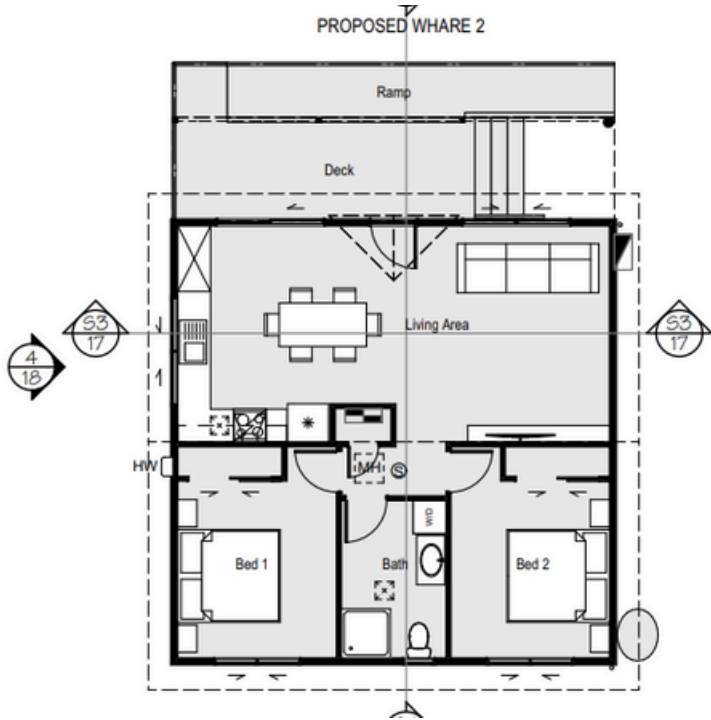


KEY PROJECT INFORMATION

- The papakainga proposal includes 5 new whare over 3 adjoining certificates of title.
- Retaining 2 of 3 existing homes.
- The sites are the following sizes: 1199m², 1093m² and 1012m².
- Two of the sites are general land tenure and one maori freehold land.



THE WHARE LAYOUTS

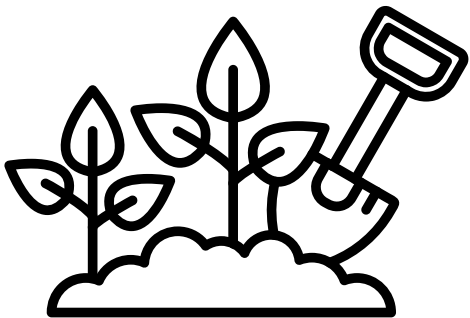


MANA MOTUHAKE

Whaanau Aspirations

Papakaainga encompasses more than just housing and the Herangi whaanau want to ensure their papakaainga is a place of mana motuhake. Some of the initiatives to achieve this are:

- Home Schooling – with a Te ao Maori view, focusing on Matauranga maori, reo me ona tikanga.
- Community Laundry – coin operated washer and dryers for whanau - reduces reliability on town businesses during severe weather events and keeps their putea amongst themselves.
- Food Co-Op – Growing and purchasing in bulk or bartering for dry goods, washing and cleaning products, meat and poultry.
- Kaumatua Respite Care – Ensuring dignity, respect and love to end of life. Whare 6 in their original proposal is a small whare with the purpose of providing for an onsite carer should the need arise.
- Renewable Energy systems - looking into solar power and other self reliance kaupapa.
- Maara kai and fruit trees - Enabling whaanau connectivity and growing their own food for self sustainability.
- The Big House will comprise of a commercial kitchen, 5 master bedrooms, shared ablution and a waananga space. There will be a plethora of uses and opportunities for this whare.



MANA MOTUHAKE

Economic stability and autonomy

The ability to pay the mortgage, rates, insurance, maintenance and other costs associated with the papakaainga is important to establish and plan for.

For the Herangi whaanau, once a whaanau member turns 18 they are required to pay a weekly rent into the trust. Additionally, to help keep costs down and enhance the whanau relationships and concept of working together, the whaanau have or propose to establish businesses to enhance their mana motuhake and provide financial security. Some of those businesses are:

Te Puna Wai Tours Ltd:

Walking tours around the town of Ngaaruawaahia created to provide a unique and distinctive walking tour for people to learn the cultural and historical stories of the Waikato people, the Kiingitanga and Tuarangawaewae marae.

Rangaranga:

Personal development program that empowers indigenous peoples to determine their own future - mana motuhake.

Papakaainga waananga:

The Herangi whaanau have condensed some of their learnings about their papakaainga and are looking to share those learnings through waananga with other whaanau on their papakaainga journeys.



MAAKU ANOO E HANGA TOOKU NEI WHARE - NAA TAAWHIAO