

Native restoration planting through erosion-prone ground surrounding upper gully slopes.

Naturalised rocky channel with native vegetation.

Outlet headwall.

Gully weeds planting along channel margins.

Whāingaroa / Raglan WWTP Discharge Consent Project

December 2024 – Community Presentation

The Journey So Far

- Currently, Raglan's wastewater is treated at the WWTP on Wainui Road and discharged to the Whāingaroa harbour via an outfall pipeline.
- The Raglan community and mana whenua have had a long-standing history with wanting the town's wastewater discharge removed from the harbour.
- We have been on a journey with WDC and Watercare for 7+ years to find an alternative discharge solution.

The Journey So Far

- The existing discharge consent was due to expire in 2020.
- A short-term consent was lodged in 2019 to allow the continued lawful discharge of treated WW to the harbour, while a long-term solution was confirmed that provided for Raglan's growth.
- There has been a strong desire from mana whenua and the community for a land-based discharge solution.



Project Objectives

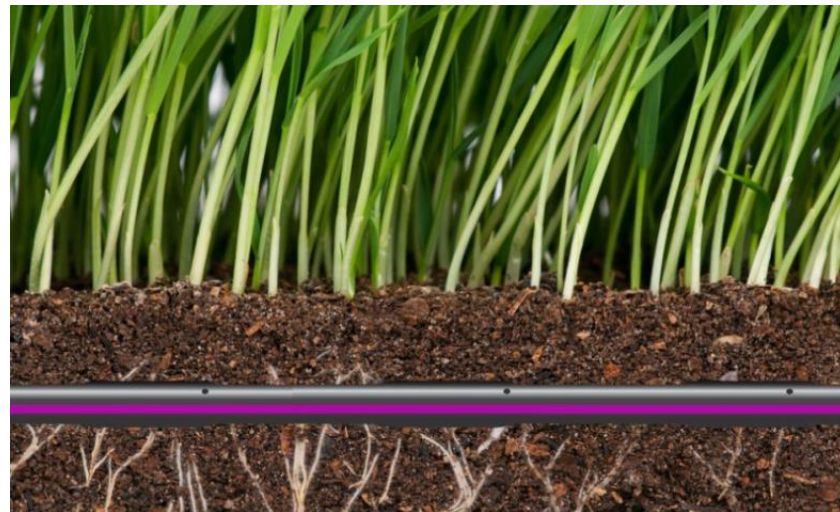
- Keep communities healthy.
- Protect the environment, particularly the water quality and ecology of the Whāingaroa Harbour.
- Recognise the significance of the Whāingaroa Harbour to mana whenua and support the kaitiaki management of customary fishing.
- Protect the community use of the area, along with the visitor experience.
- Work in partnership with the community and mana whenua.
- Retain flexibility for future, sustainable, long-term solutions including potential reuse of treated wastewater.
- Keep the overall costs of the wastewater solution to affordable levels.

Land Discharge Options Process



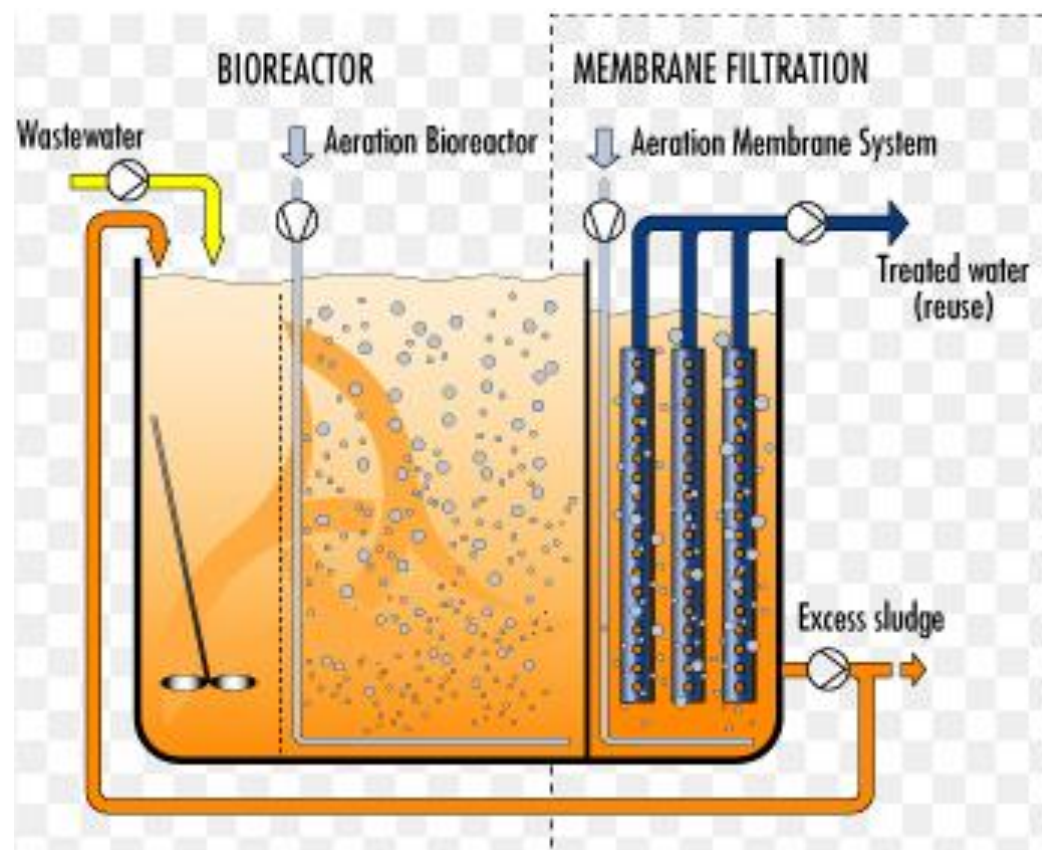
Challenges We Faced With Land Discharge

- Sub-surface/soil drip irrigation was the best form of land discharge method for the current plant.
- Suitable land - size and soil type.
- Affordability.



Key Milestone - Plant Upgrades

- With strong community support the decision was made to upgrade the current plant to a Membrane BioReactor (MBR) system before a long-term discharge solution was confirmed.



Raglan WWTP Membrane Bioreactor



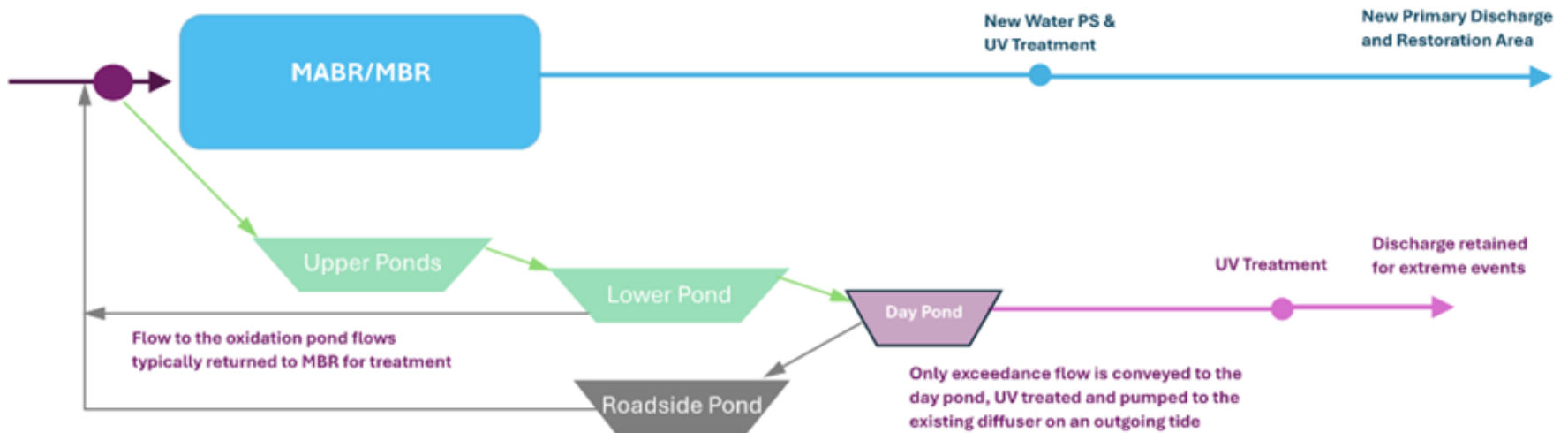
Te Kauwhata Example

- The treated wastewater has the same clarity as drinking water and is close to a drinking water quality.



High-level Plant Process

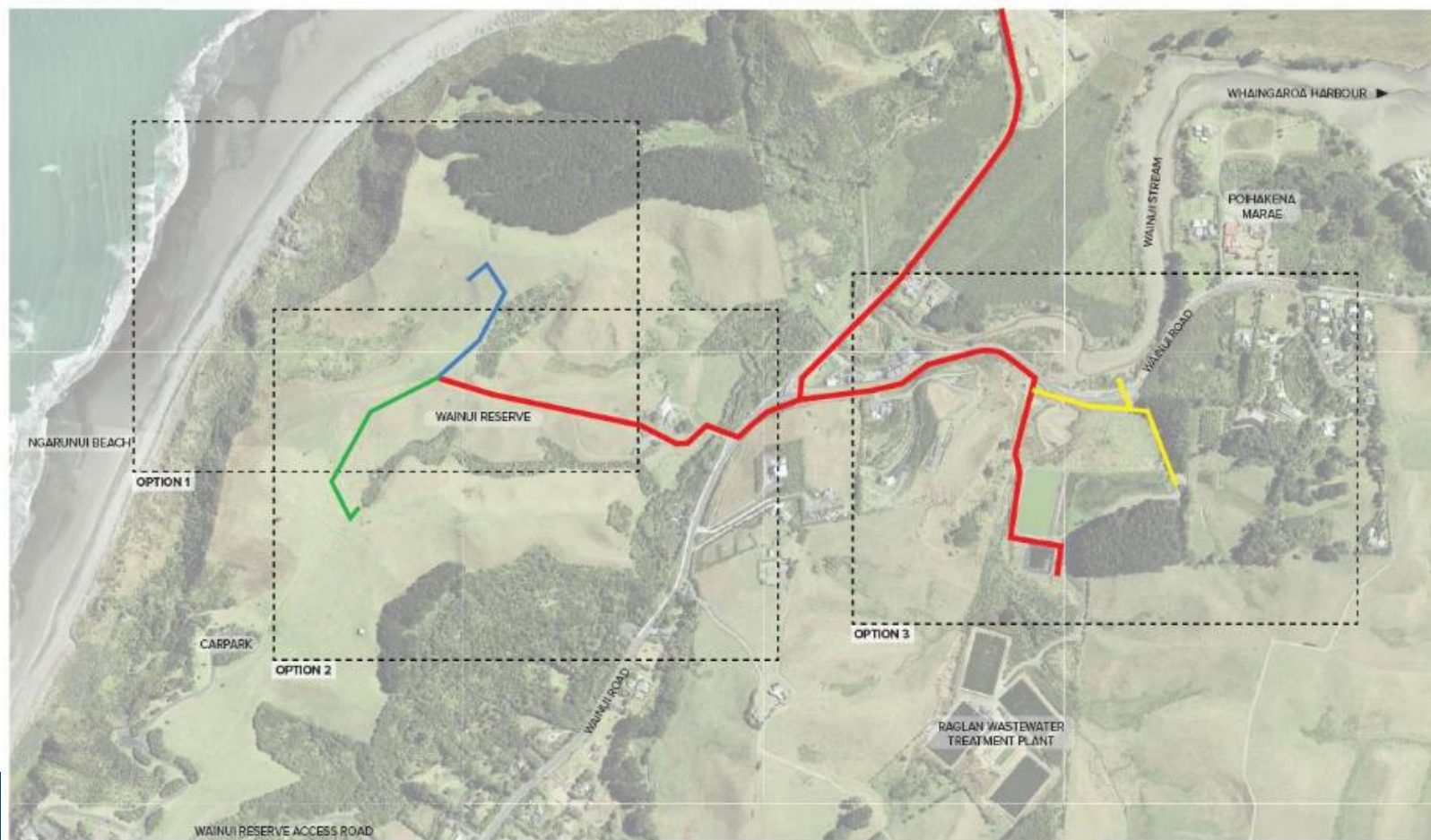
Raglan WWTP MBR Upgrade – Overall Process Schematic



Re-looked at the Land Discharge Options

With the MBR producing such a high-quality discharge we re-look at possible land contact discharge options.

LOCATION MAP



LEGEND

- Mainline Pipe
- OPTION 1: WAINUI RESERVE WESTERN GULLY DISCHARGE
- OPTION 2: WAINUI RESERVE EASTERN GULLY DISCHARGE
- OPTION 3: RAGLAN WWTP - DISCHARGE TO MAINLINE AND WAINUI STREAM



OPTION 1 ARTISTS IMPRESSION





Preferred Option

- Can meet project objectives.
- Tainui o Tainui support.
- Avoids discharge to the Wainui Stream/sensitive environments.
- Provides land contact.
- Land is available and most affordable option.
- Additional benefit of gully restoration opportunities to enhance Wainui Reserve.

Technical Work Completed/Underway

- **Archaeological** assessment by Warren Gumbley – no identified cultural or heritage sites within the project area.
- **Ecological** assessment – site investigation found the gully to have low ecological values, but significant restoration opportunity.
- **Geotechnical and hydrogeological** assessments are underway. Two groundwater monitoring boreholes have been installed at the site and will monitor for three months.
- Of importance is understanding what volume of water can safely be discharged to the gully.

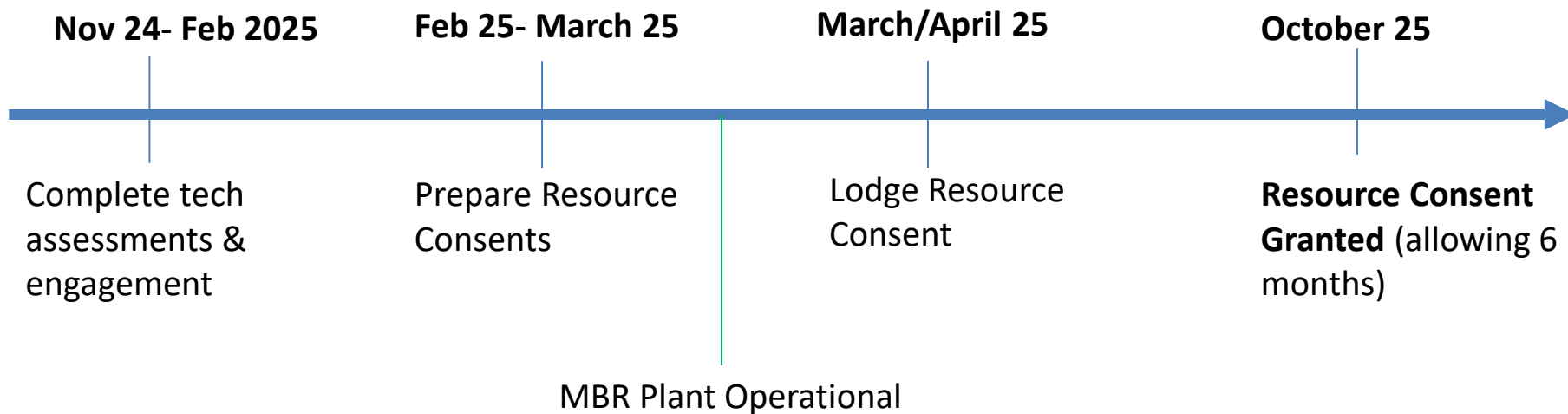
Technical Work Coming up

- **Water Quality** Assessment and Public Health Risk Assessment.
- **Air Quality** Assessment (of MBR and discharge location).
- Further **engineering design** off the discharge outlet.

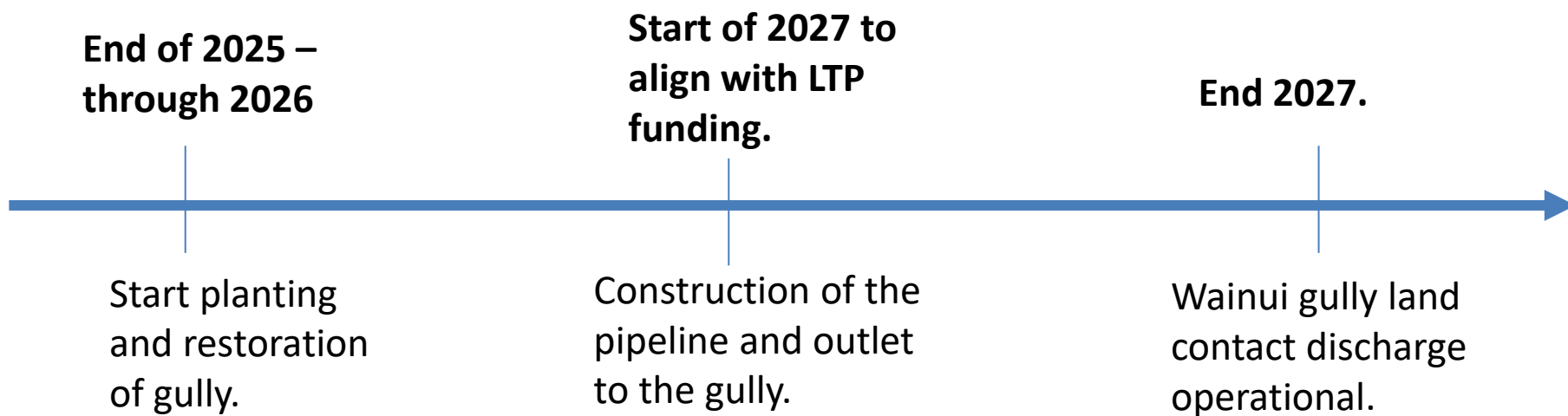
Further Engagement

- ‘Drop in’ information sessions planned at Wainui Reserve carpark.
- Special interest group information.
- On-going engagement with:
 - Mana Whenua.
 - WDC Open Spaces Team.
 - Local plant nursery suppliers.
 - Bi-monthly community online meetings.
 - Community updates through online and local paper communication channels.
 - Waikato Regional Council who will be processing the consent application.

Current Project Timeline



Current Construction Timeline



Community Discussion

