

Whaingaroa / Raglan WWTP Discharge Consent Application Project

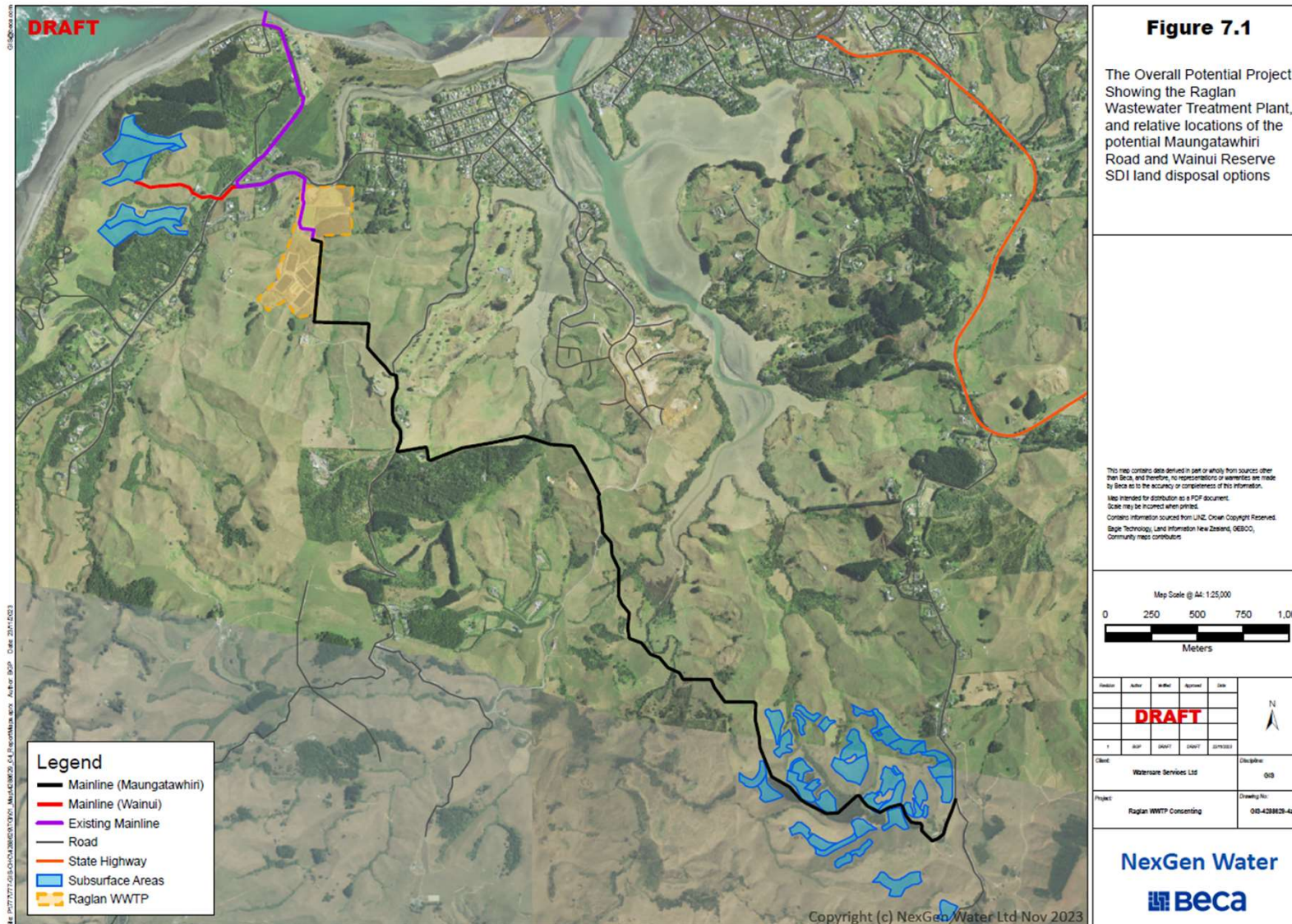
December 2023– Community Update

- 
- 1) MBR Plant Upgrade
 - 2) Land Discharge Options Investigations
 - (a) Private land (Maungatawhiri Road) Sub-surface Dripper Irrigation Investigation
 - (b) Public Land (Wainui Reserve) SDI Investigation

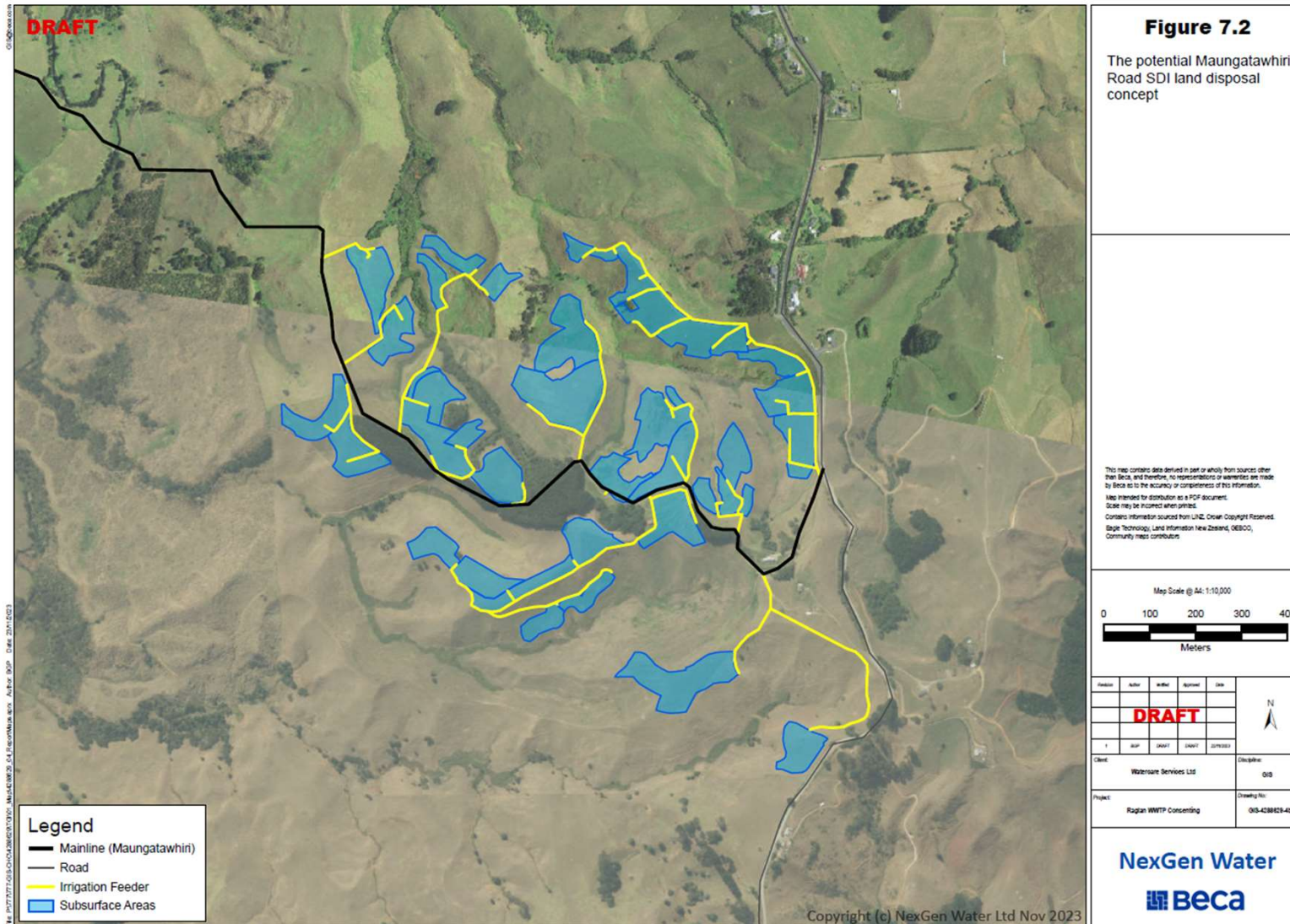
Sub-surface Dripper Irrigation (SDI)



Sub-surface Drinker Irrigation (SDI)



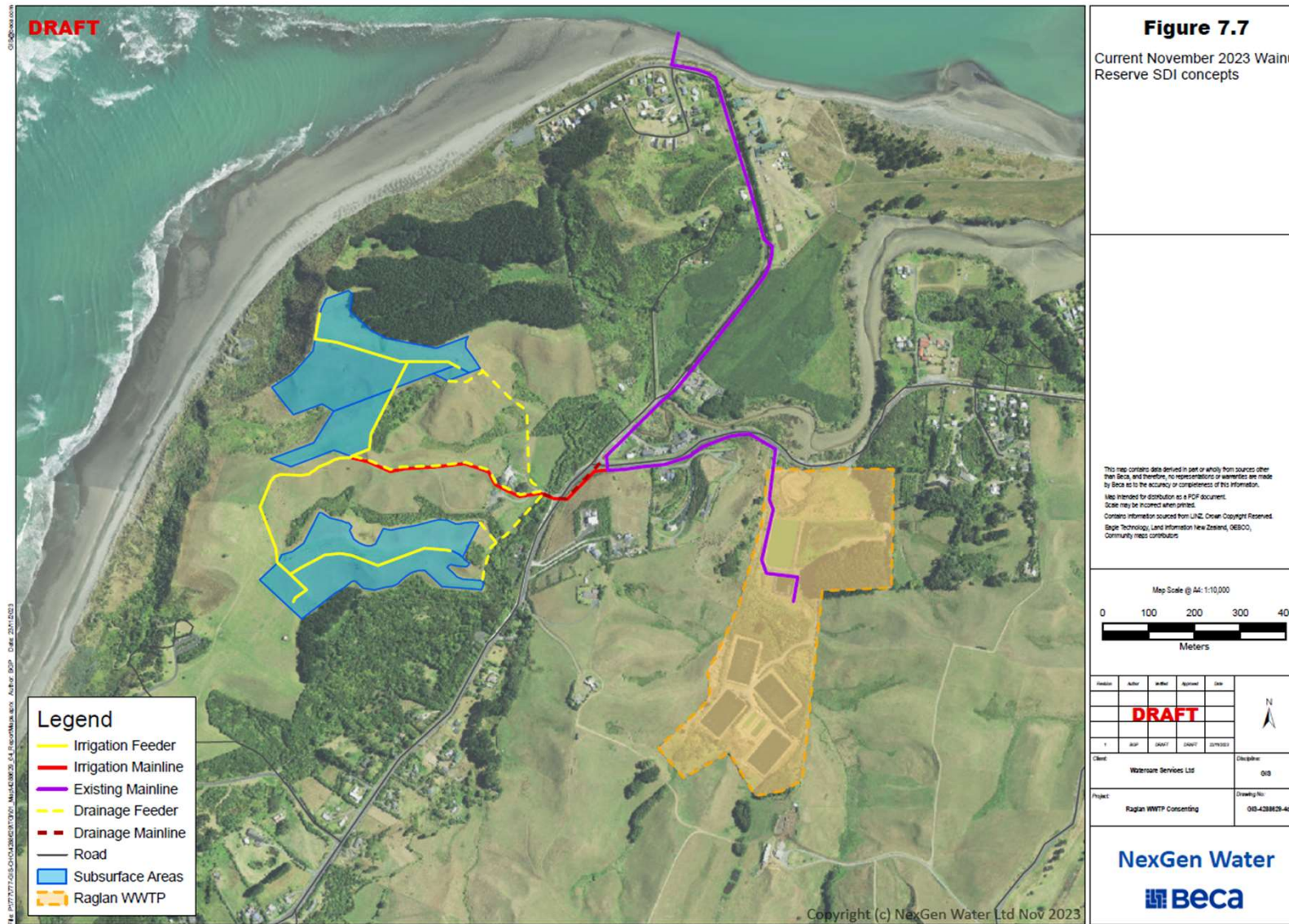
Sub-surface Dripper Irrigation (SDI) - Private land (Maungatawhiri Road)



- MOU obtained from landowner
- 25 hectare (with reserve are for population growth)
- Soil is well drained loam
- Further investigation require if to progress
- Conveyance pipe and Pump station, concept Design completed

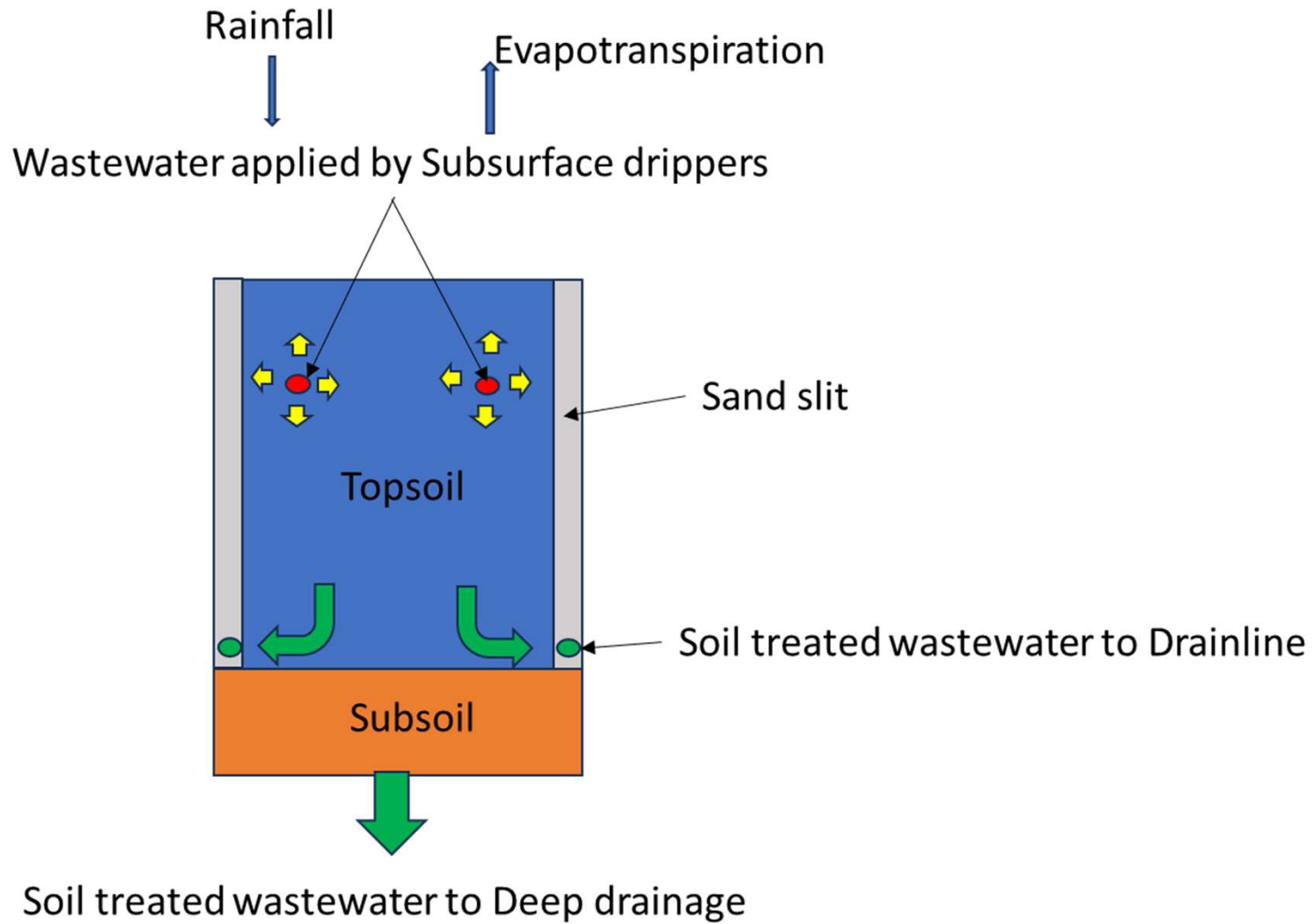
Public Land (Wainui Reserve) SDI - Concept Development

- *Develop SDI concept for Northern Wainui Reserve areas.*
- *Poorer soils than Maungatawhiri Road*
- *Required for short list options and MCA*



Public Land (Wainui Reserve) SDI - Concept Development

- *Develop SDI concept for Northern Wainui Reserve areas.*
- *Poorer soils than Maungatawhiri Road*
- *Required for short list options and MCA*



Public Land (Wainui Reserve) SDI - Concept Development

- *Need to discuss this and any other potential options in Wainui Reserve with Iwi, other stakeholders and WDC.*

