

Whaingaroa / Raglan WWTP Discharge Consent Application Project

August 2024 – Community Update

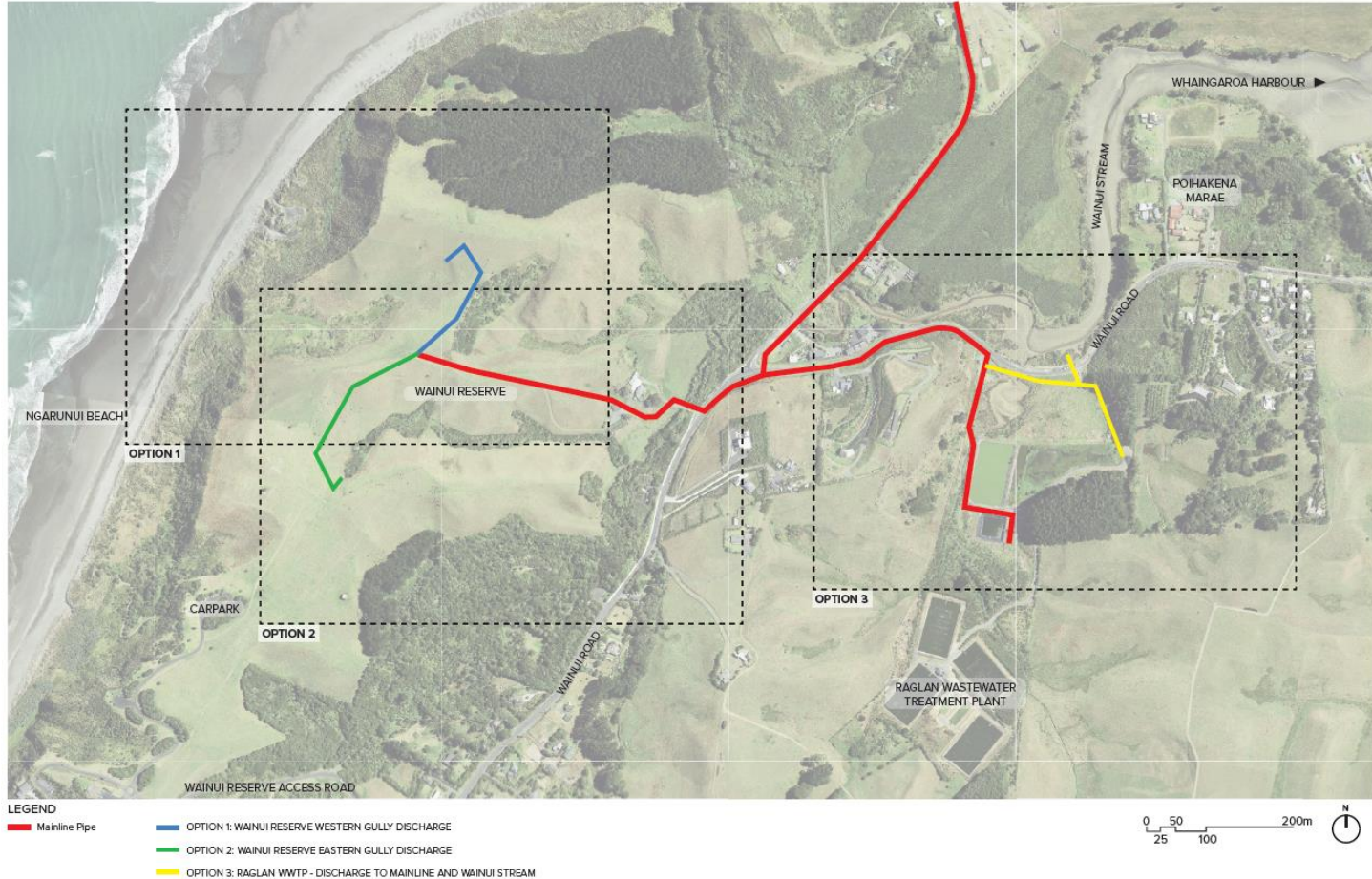


1. Consenting Tasks Underway
2. Plant Upgrade Update

Recap on Investigations and Studies

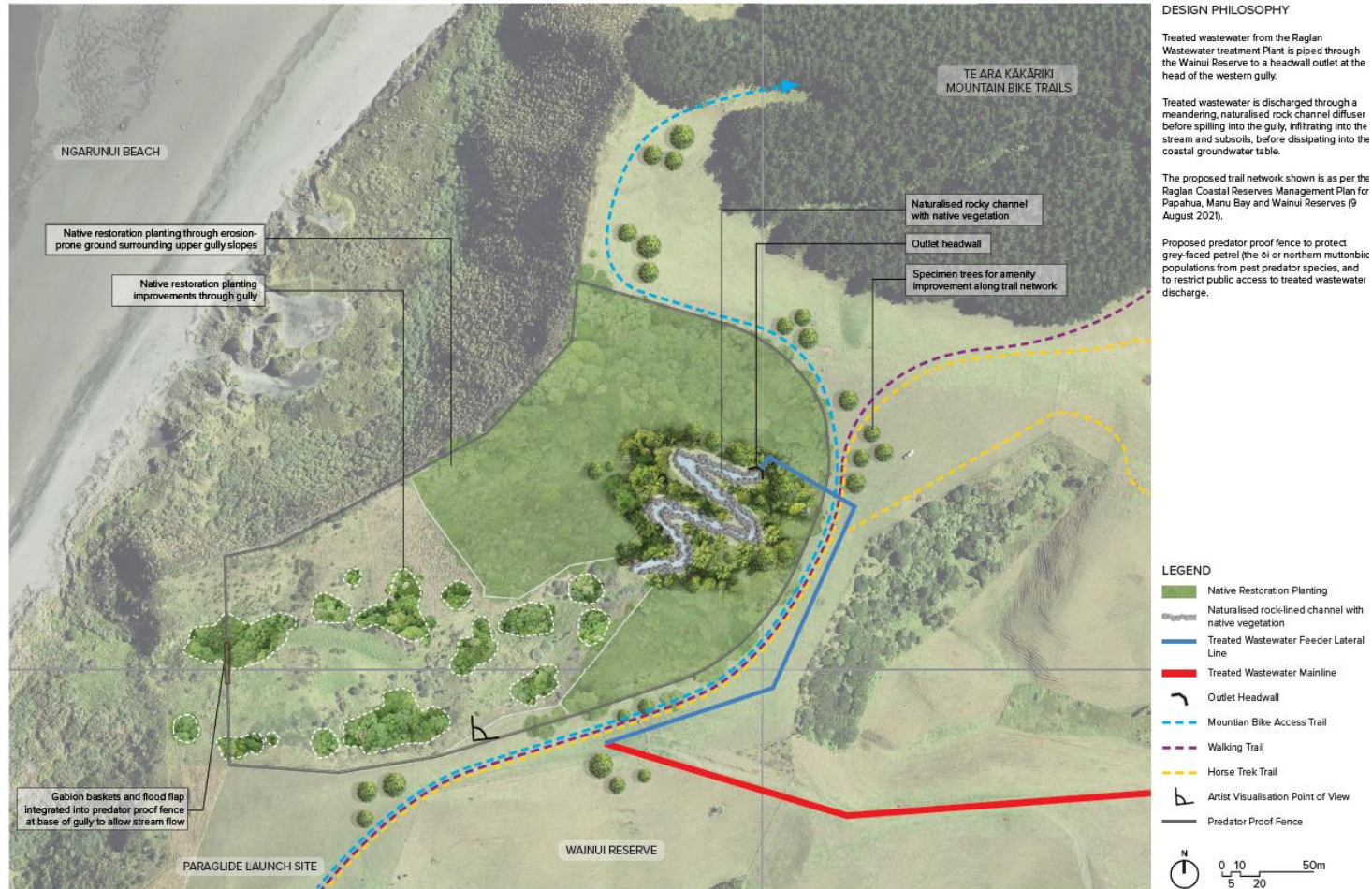
Land contact concepts were developed for 3 locations.

LOCATION MAP



Preferred Option

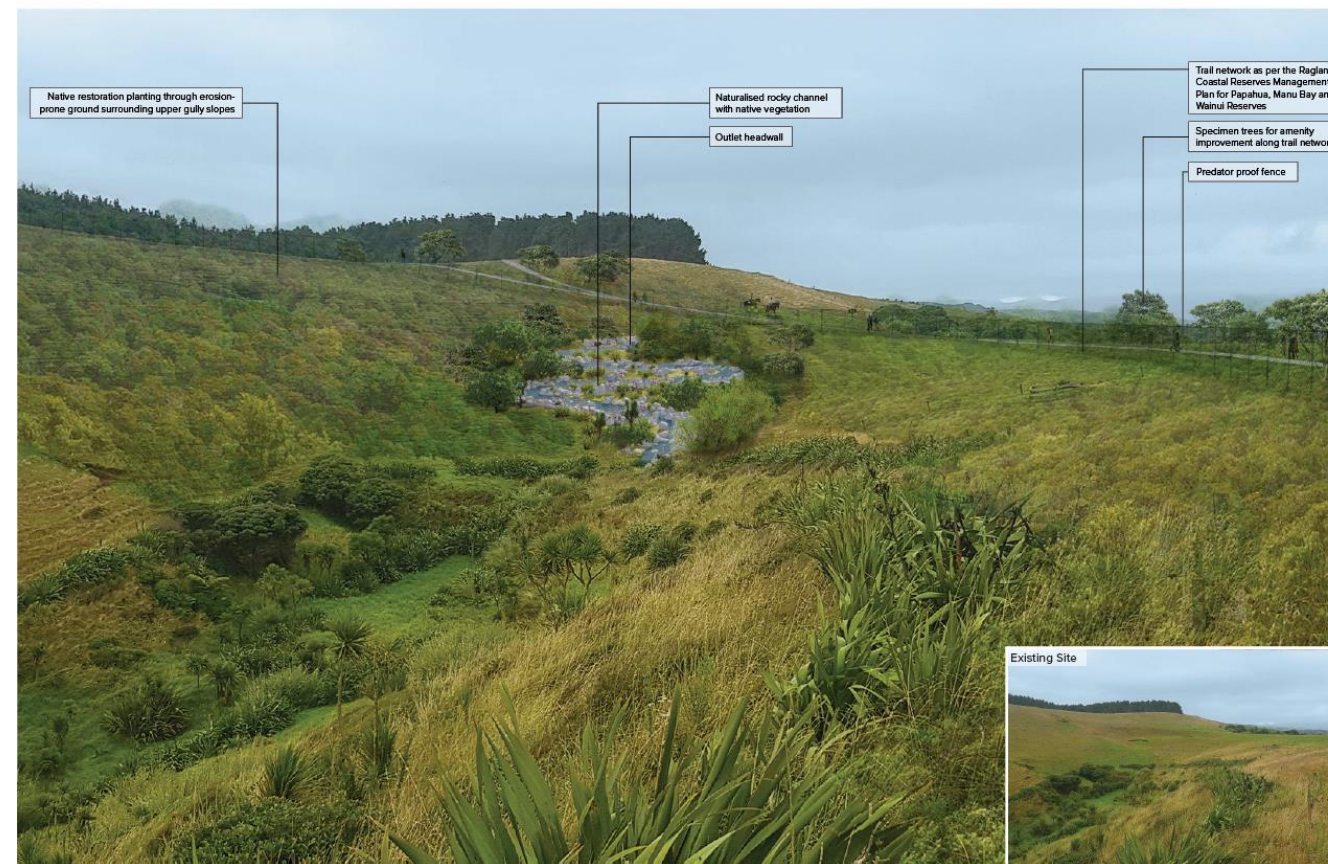
Option 1 – Wainui Reserve Western Coastal Gully.



Preferred Option

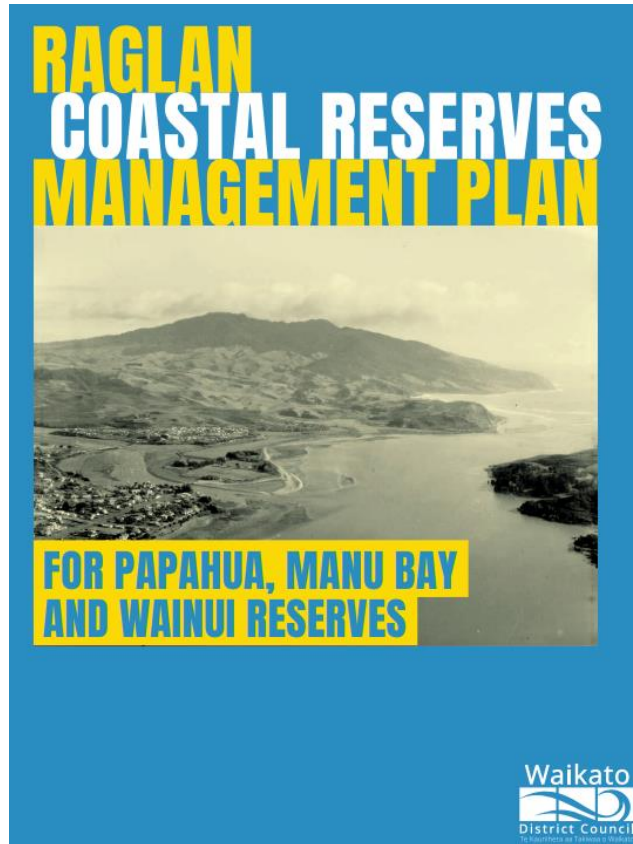
Option 1 – Wainui Reserve Western Coastal Gully.

OPTION 1 ARTISTS IMPRESSION



- Tainui o Tainui support
- Avoids discharge to the Wainui Stream
- Provides land contact
- Land is available/feasible solution
- Additional benefit of gully restoration opportunities

Technical Work being Progressed for Option 1



- Working with WDC Open Spaces team

“Council may investigate alternative landuse such as irrigation of highly treated, reclaimed wastewater, however alternative landuses shall not impact on recreational activities that align with the primary purpose of the reserve”

Technical Work being Progressed for Option 1



Raglan Coastal Reserve Management Plan
Wainui Reserve cultural and historical heritage sites



Date: 09 June 2021
Projection: NZTM

Imagery owned by Waikato Regional Aerial
Photography Service (WRAPPS) 2012.
Copyright © WRAPPS 2012.

Legend

- NZAA Site
- Cultural Sites
- Reserve Extent

- Warren Gumbley has been engaged to do an archaeological assessment of the discharge site and pipeline corridor.
- Geotechnical and hydrogeological site investigations and monitoring
- Ecological impact assessment
- Water quality and public health assessments
- Air discharge assessment
- Progressing concept design of the discharge
- Ongoing iwi, stakeholder and community engagement

Consent Strategy



- Complete **technical investigations** over the **next 3 months**
- **Lodge consent** application for discharges relating to the WWTP **early 2025**
 - Discharge to land and within the CMA
 - Discharge to air at the WWTP and at the discharge site
- Consents for the construction of the discharge solution and pipeline conveyance, such as earthworks consents.
- These will be sought closer to the time of construction.



Progress Update - Raglan WWTP Membrane Bioreactor



- Good progress on construction
- Civil works now complete
- On track to be operational in the next 12 months



Progress Update - Raglan WWTP Membrane Bioreactor

