

# Raglan WWTP Discharge Consent Application Project

September 2023– Technical update

Whakataka te hau ki te uru,  
Whakataka te hau ki te tonga.  
Kia mākinakina ki uta,  
Kia mātaratara ki tai.  
E hī ake ana te atakura.  
He tio, he huka, he hauhū.  
Tīhei Mauri Ora!

Cease oh winds of the west  
and of the south  
Let the bracing breezes flow,  
over the land and the sea.  
Let the red-tipped dawn come  
with a sharpened edge, a touch of frost,  
a promise of a glorious day.  
Let there be Life!

Agenda		
Welcome/ Introductions/ Overview	Cllr	5m
1) On-going project work: (a) Conveyance studies (b) MBR Plant Tender (c) WDC led activity: MOU (d) Private Land SDI Concepts (e) Public Land (Wainui Reserve) SDI Investigation	Richard	15m
2) Discussion and Q/A time	Clr	10m

## 1) PROJECT UPDATE - September

Activity a: Conveyance studies: *Concept design of conveyance Pipe and Pump station completed. This is the pipeline route between WWTP and Maungatawhiri Road site.*

Activity b: MBR Plant Tender: *Tender Process continues with submissions being received and accessed by panel.*

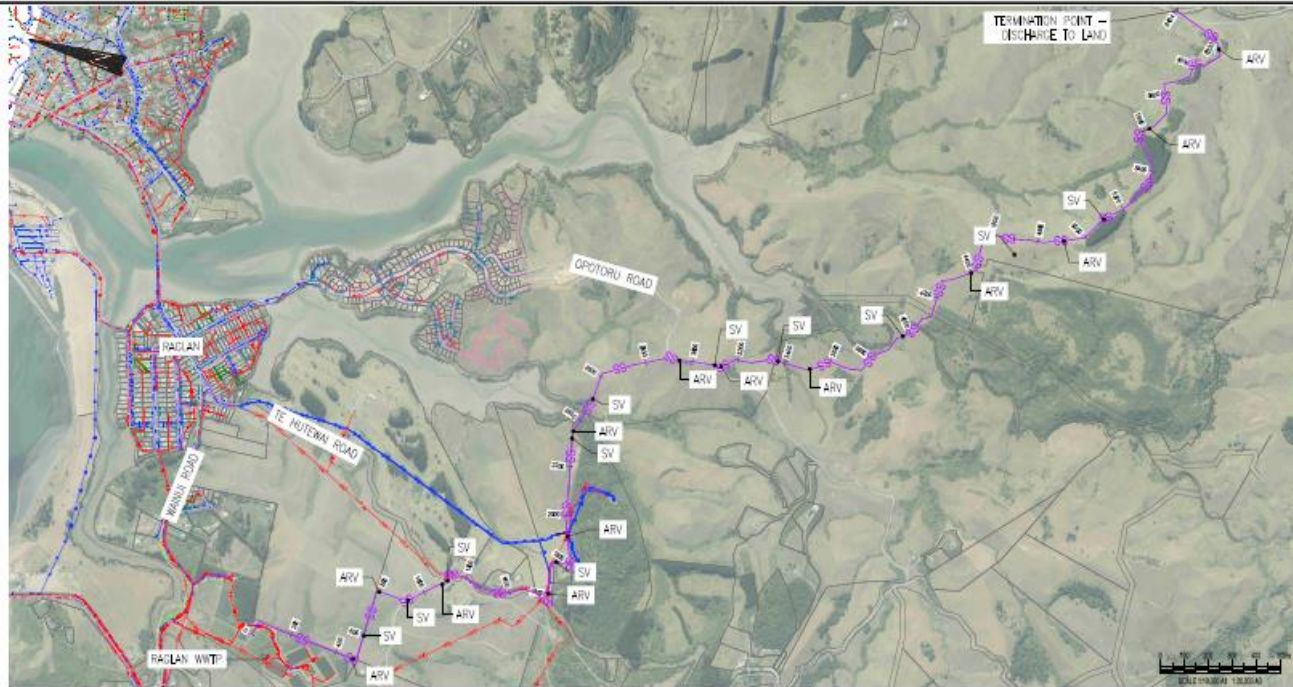
Activity c: WDC led activity: MOU: *Progressing*

Activity d: Private Land SDI Investigation site : *21-22 hectares of the area have suitable soil pockets; Concept design is well progressed.*

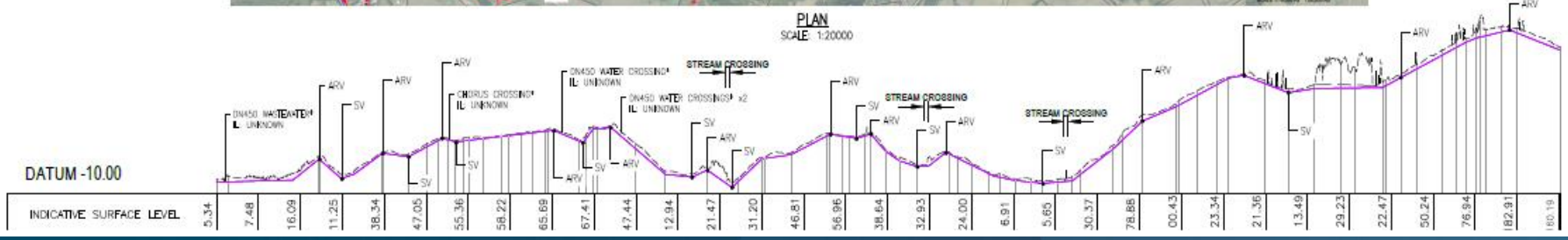
Activity e: Public Land (Wainui Reserve) SDI Investigation: *Further development of this concept will commence in October.*

# Conveyance Pipeline and Pump Station Concept Design

- *Concept design continue.*
- *Schedule of quantities and estimates prepared*



- NOTES**
1. COORDINATES ARE IN TERMS OF NEW ZEALAND TRANSVERSE MERCATOR (NZTM).
  2. LEVELS ARE IN TERMS OF MOTURIKI 1953 VERTICAL DATUM.
  3. ALL INVERT LEVELS ARE ASSUMED AND TO BE CONFIRMED AT SITE.
  4. ALL VALUES WITH A "\*" TO BE VERIFIED IN ADVANCE.
  6. SERVICE (\*) - SERVICE (DEPTH UNKNOWN).
  7. SERVICE (X.Xm) - SERVICE (DEPTH UNVERIFIED).
  8. SERVICE [X.Xm] - SERVICE [DEPTH VERIFIED].



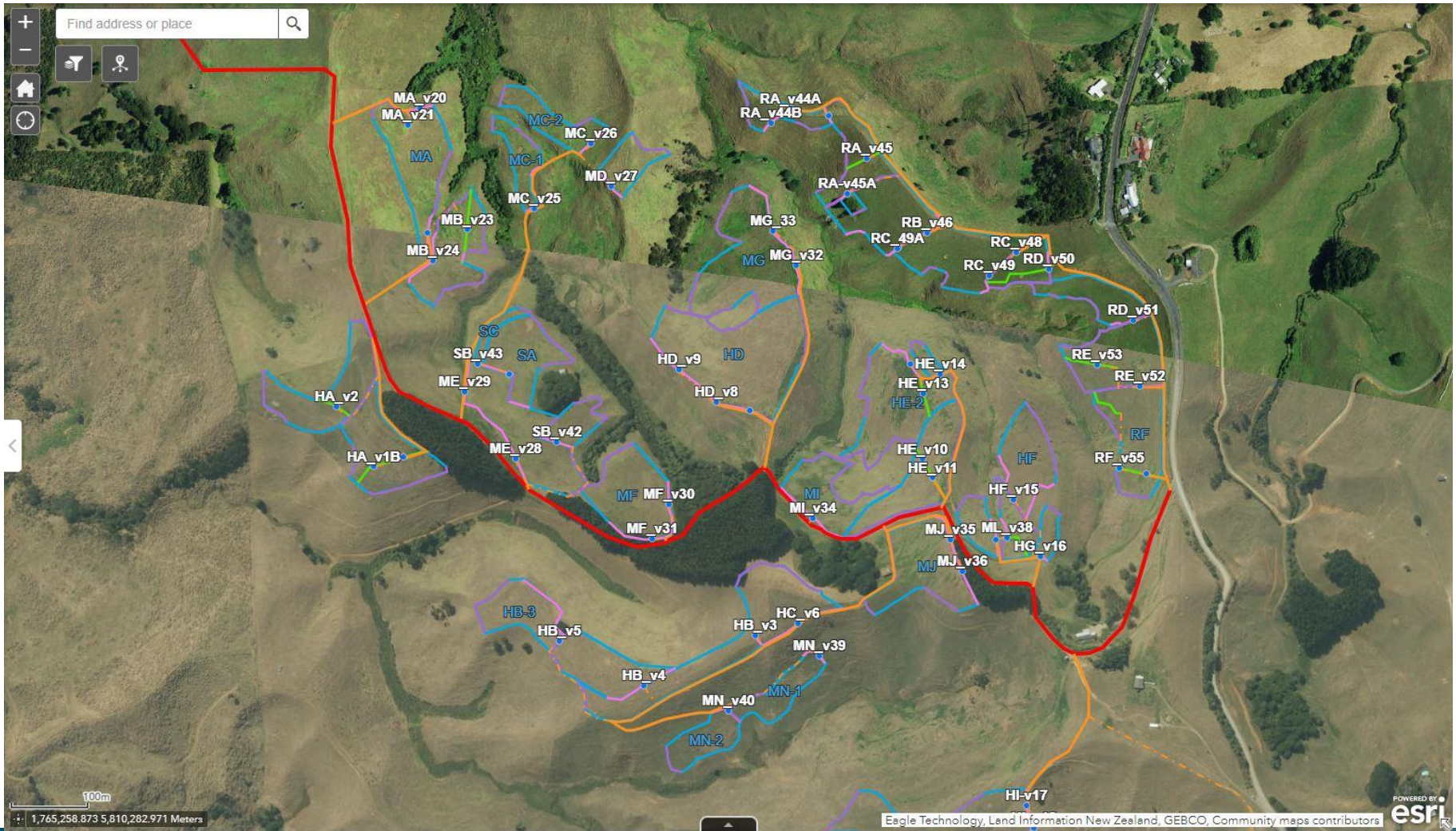
## WWTP MBR Upgrade Tender

- *Tenders received.*
- *Tender assessment progressing*

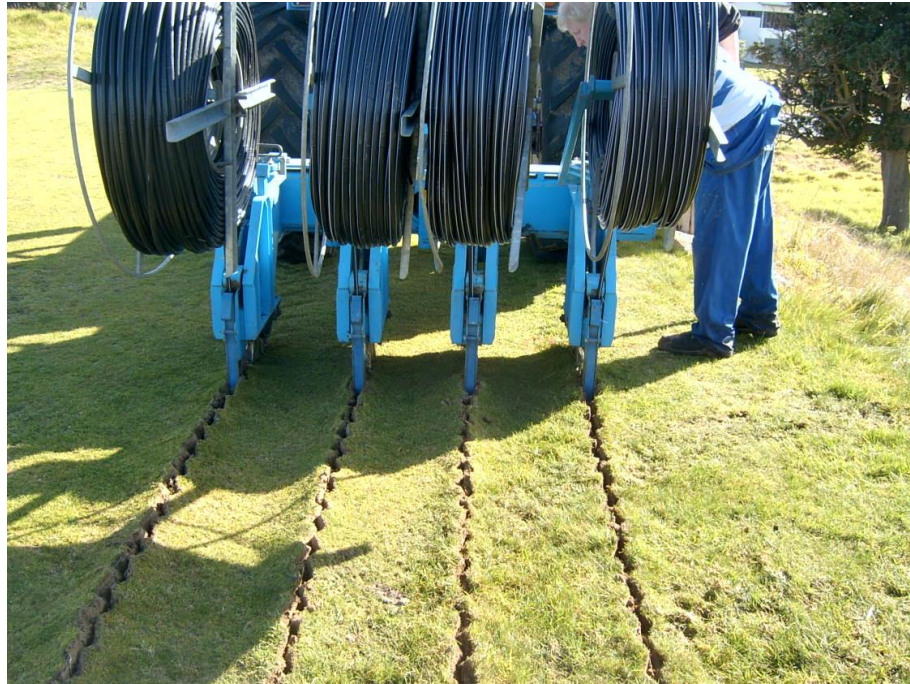


# Private Land (Mangatawhiri Road) SDI - Conceptual

- *Concept design continue.*
- *Schedule of quantities and estimates prepared*



# Sub-surface Dripper Irrigation SDI - Installation



# Public Land (Wainui Reserve) SDI - Concept Development

- *Develop SDI concept for Northern Wainui Reserve areas.*
- *Required for short list options and MCA*



## 2) Closing:

- Discussion and Q/A time
- Round Up: Chairman