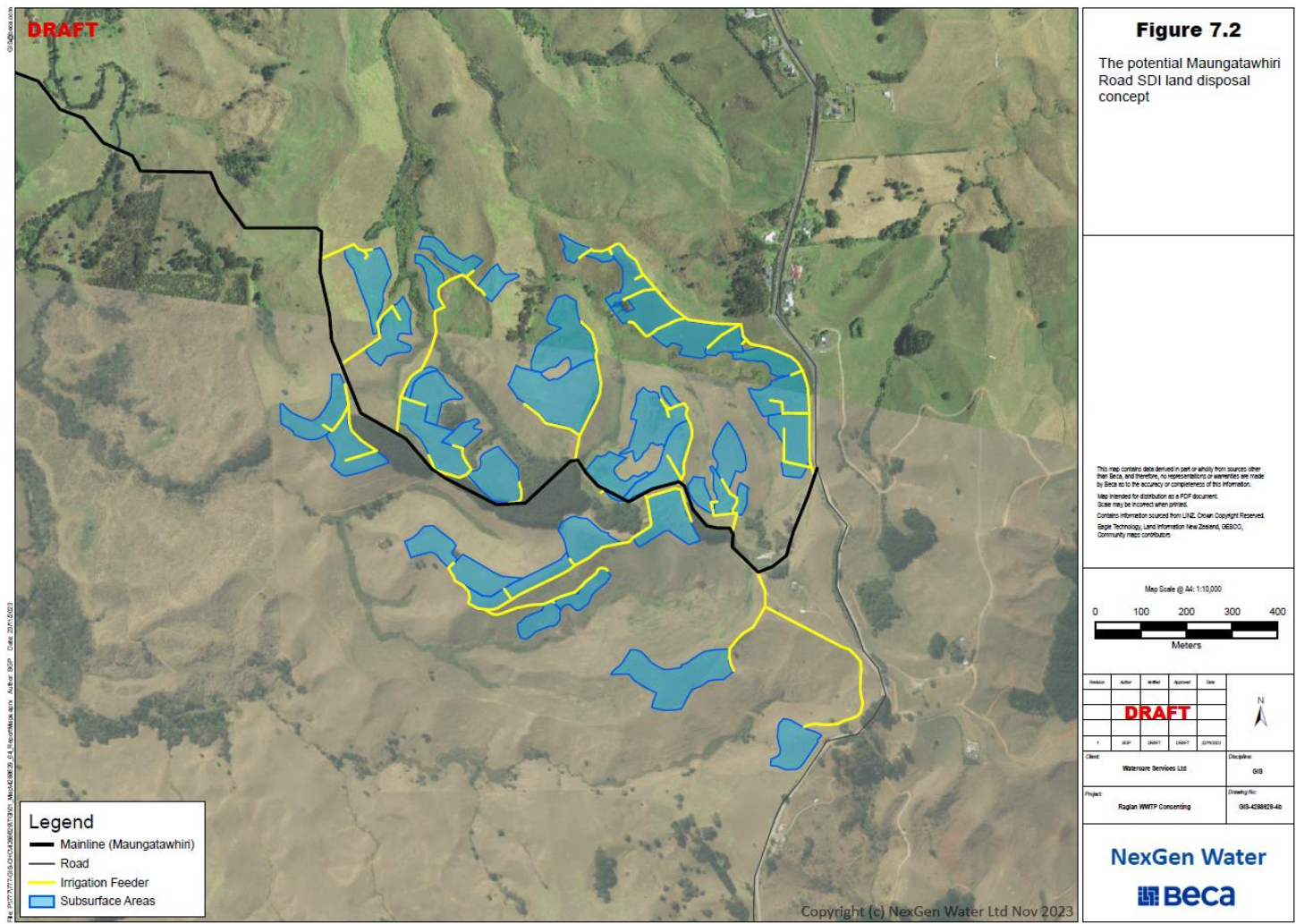


Whaiaingaroa/Raglan WWTP Discharge Consent Application Project

February 2024 – Community Update

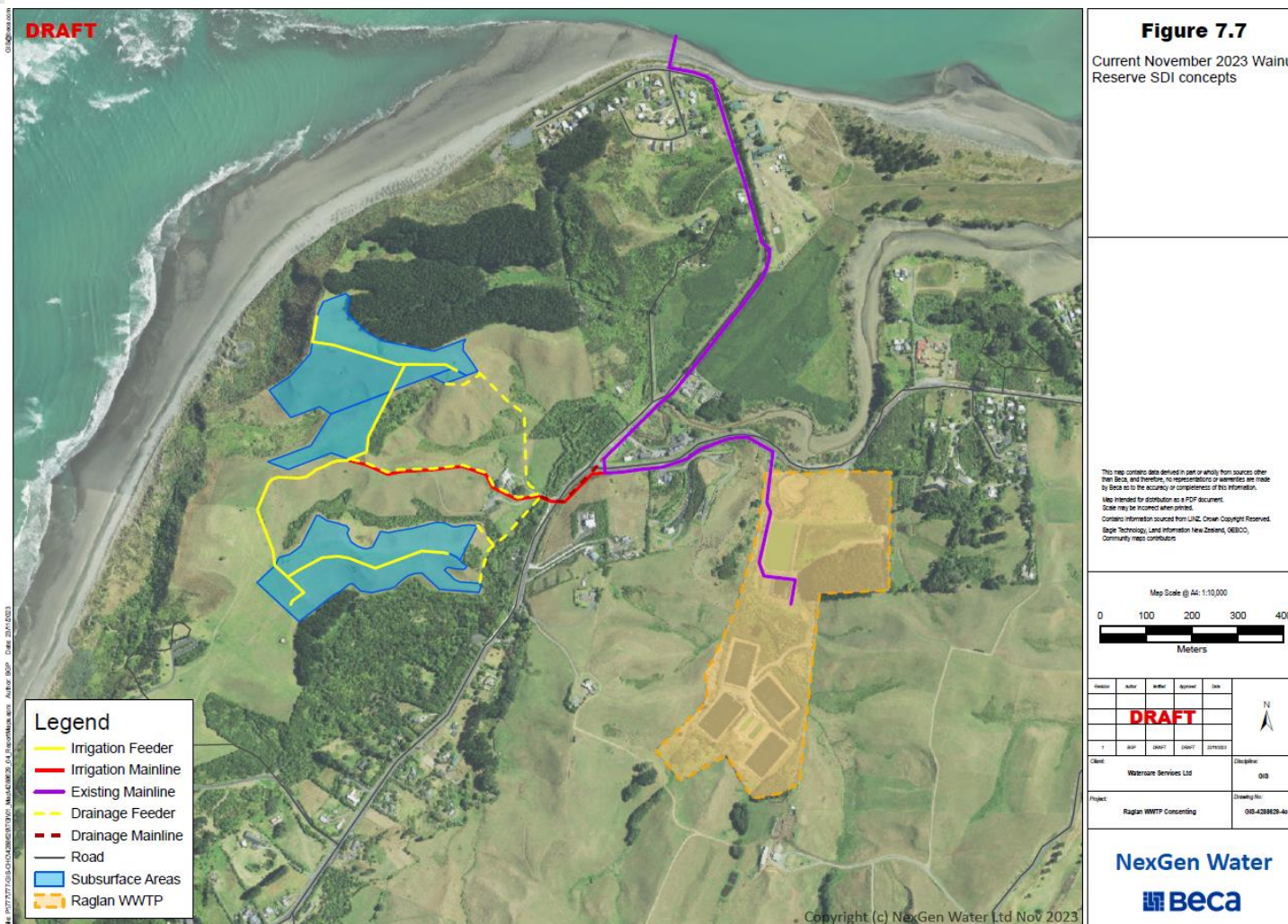
1. Plant upgrade
2. Performance of current WWTP vs new MBR WWTP

Sub-surface Dripper Irrigation (SDI) - Private land (Maungatawhiri Road)



Public Land (Wainui Reserve) SDI – Concept Development

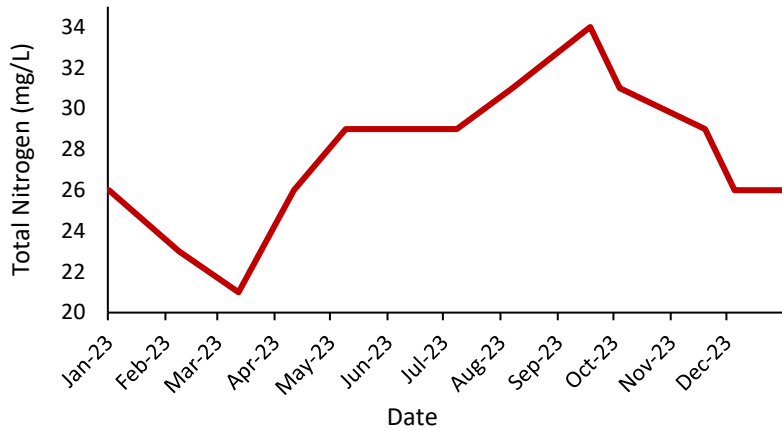
- Develop SDI concept for Northern Wainui Reserve areas.
- Poorer soils than Maungatawhiri Road.
- Required for short list options and MCA.



Current Performance

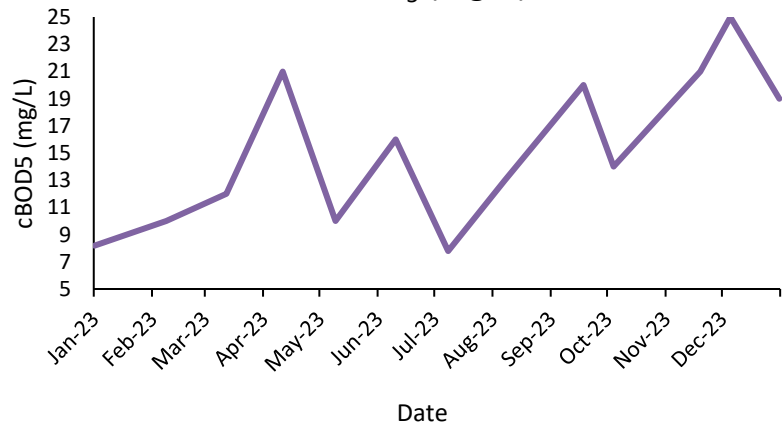
New Plant Performance

Total Nitrogen (mg/L)



4 mg/L

cBOD₅ (mg/L)

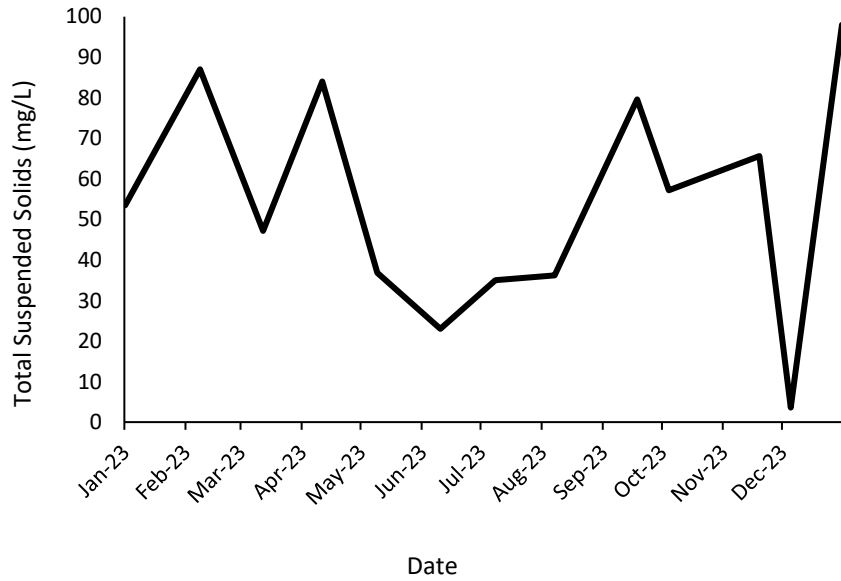


5 mg/L

Current Performance

New Plant Performance

Total Suspended Solids (mg/L)



5 mg/L

Other Parameters (new WWTP)

Total Phosphorus – 0.5 mg/L

E.Coli – 14 cfu/100 mL

pH 6.5 – 8.5

Reduction in emerging contaminants around 80 – 90%

Microplastics removal