

Raglan WWTP Discharge Consent Application Project

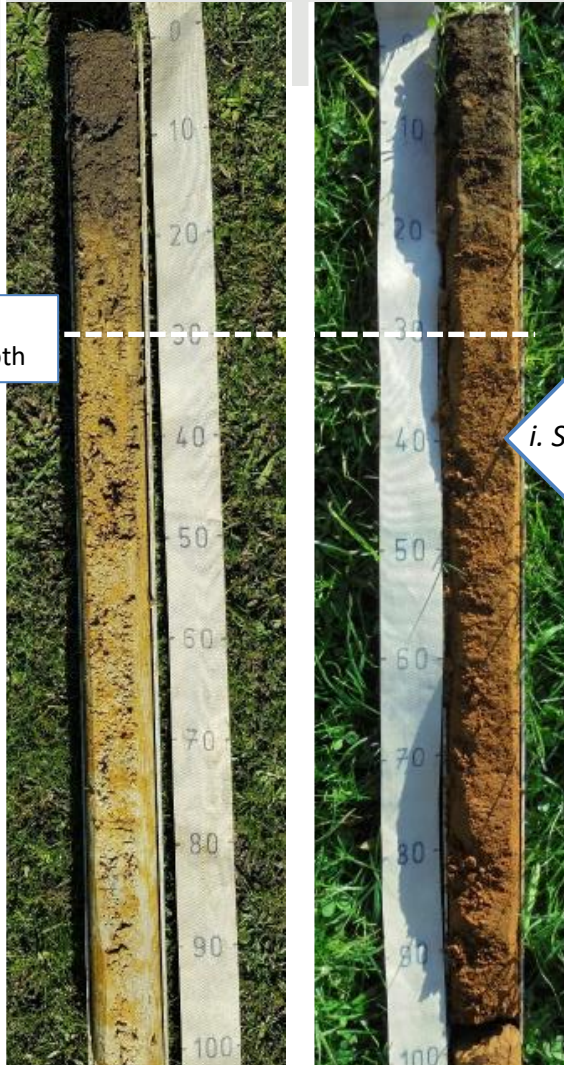
Community and Key stakeholder Meeting 24 August 2021

Welcome – CLLR Bech

- (i) NEXGEN/LANDCARE REPORTING - Next steps
- (ii) Treatment Upgrade - TSS/Solar Array – Next steps

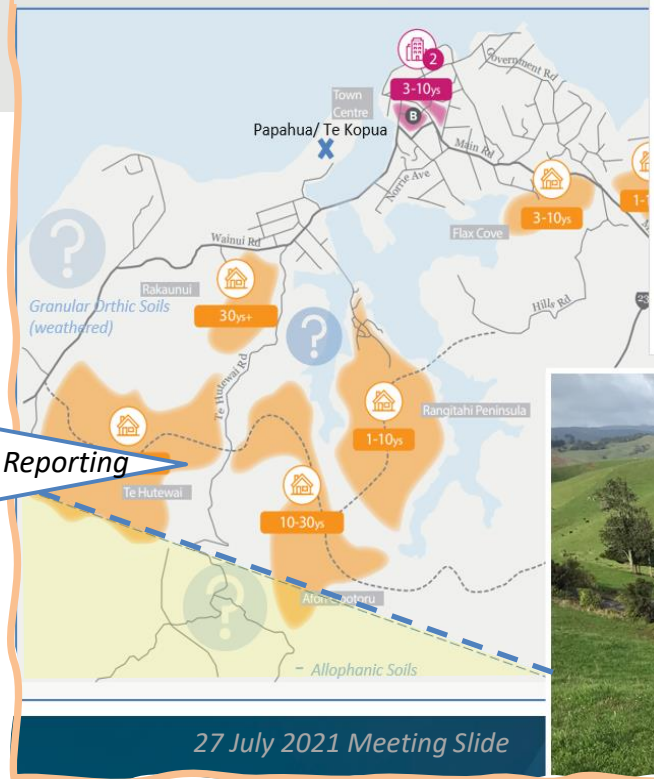
Wrap up/Queries – CLLR Bech

(i) NEXGEN/LANDCARE REPORTING



SDI depth

i. Soils Reporting



27 July 2021 Meeting Slide

June 2021

- Advancing prefeasibility studies (Nexgen May reporting – website)
- Site focus allowing (a) theoretical scenario building and (b) secondary party engagement documents
- Next steps Landcare: Soils reporting end July; Particle size testing of inflow (verify treatment needs)

Upon completion....

Present business cases to secondary parties.



Landcare (Draft) Aug Report (website soon)

Granular Orthic Soils Allophanic Soils

- K(sat) potential
- Evidence of perching

ii. Engagement

- ✓ Report distribution – ‘In good faith discussions ongoing’
- ✓ Follow up engagements (Property Staff)
- ✓ Integrated thinking to consider holistic growth options

AUG UPDATE

iii. Particle size testing

- ✓ RJ Hills and Waikato University Lab engaged - SDI treatment design

iii. Present Business Cases

- ✓ All sites deserve business cases – 24ha needed for present N/P re-use;
- ✓ Working toward fair dealings to secure ‘win/win’ SDI solutions in alignment with project objectives

(ii) TREATMENT UPGRADES - TSS

Background: Raglan Triggers –excessive algae

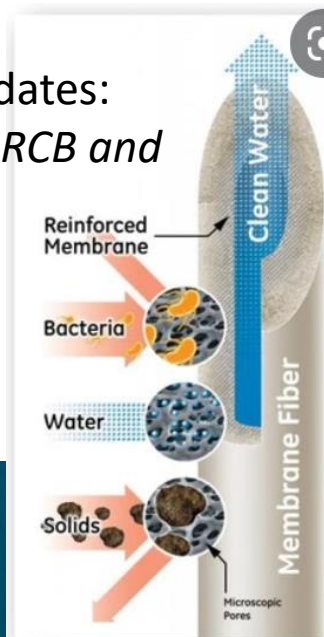
- 2015 Day Pond construction
- 2018 Design Phase: Ponds system causing Total Suspended Peaks
- 2019 Consent optioneering includes 100% winter flow to land : TSS project paused

Present Day:

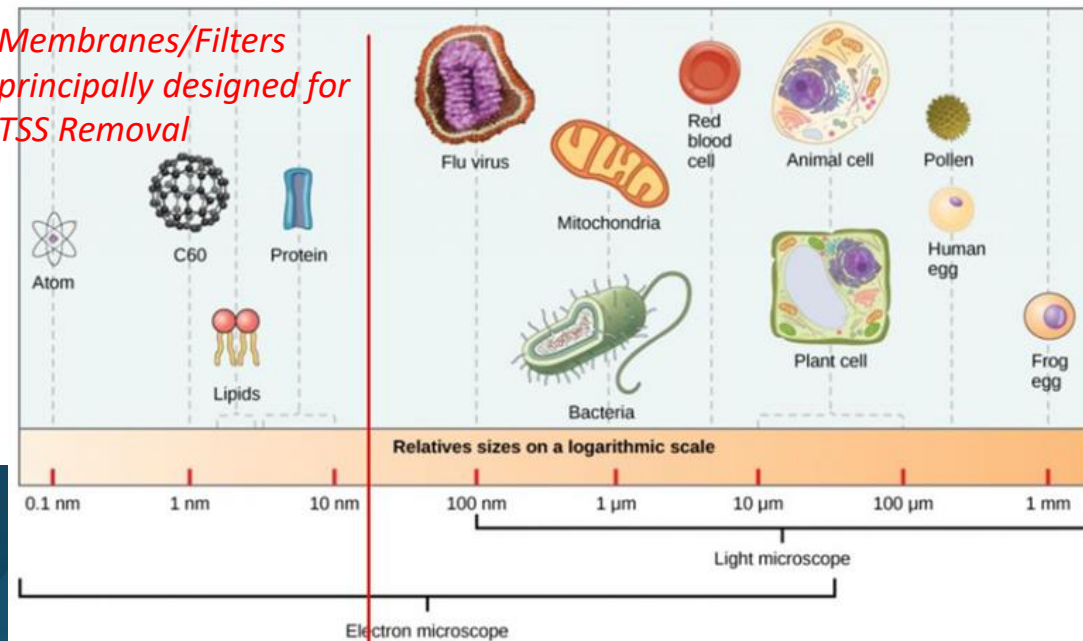
- Project Leaders satisfied that no stranded asset scenario now exists. Design phase to be initiated followed by construction of favored option that meets best practice (*Membrane or Microfiltration*) and project needs (*construction LTP budgets available*)

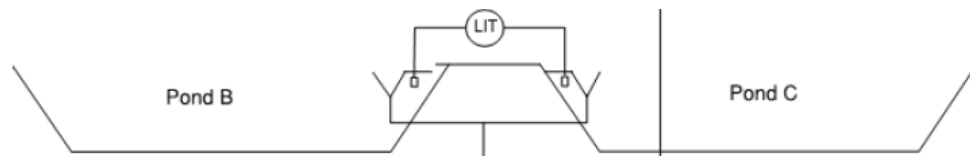
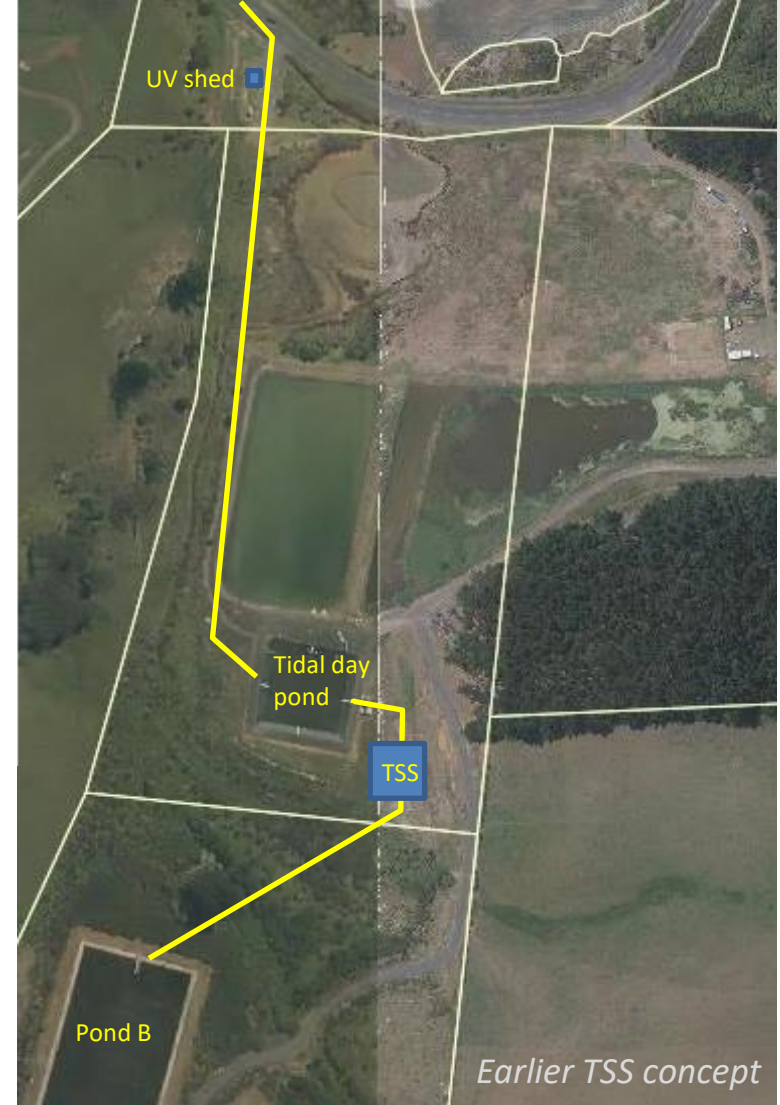
Next Steps:

- Continual status updates:
(WRC, WDC-ELT, WGB, RCB and wider community)



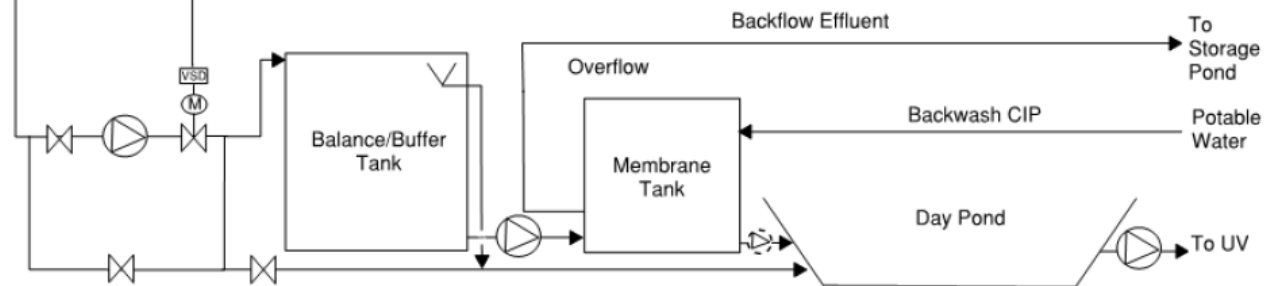
*Membranes/Filters
principally designed for
TSS Removal*





Other NZ examples:
 Maungatoroto, Matamata,
 Dannevirke, Taihape and
 Motueka.

Lessons
 TSS/Phosphorus/Nitrogen/
 BOD/Pathogens



(ii) TREATMENT UPGRADES – Solar Array 2022



Aerial view of Raglan WWTP

Notes: Joint Papakura ordering, Powersmart design amendments needed.

Timing schedule – mid Sept equipment ordering, mid Feb balance payment (Q1 construction)



Proposed array area (2,600m²)



Similar ground-mounted array at Pukekohe WWTP

- Wrap up/Queries – Cr Bech /Ian C/Sharon D