

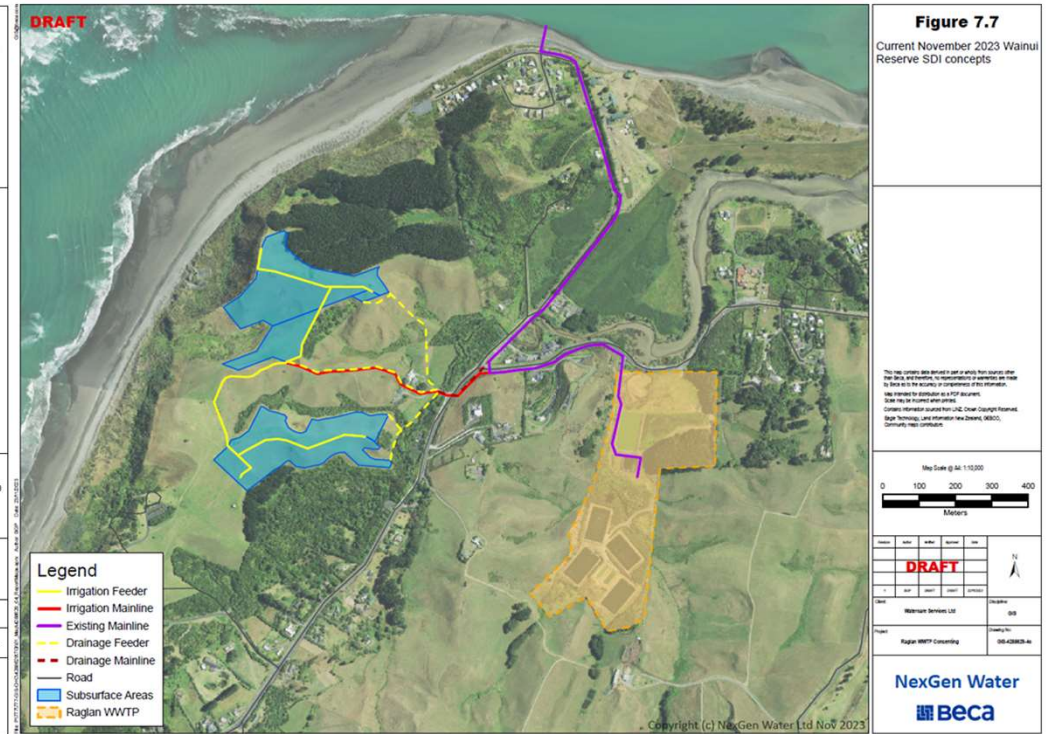
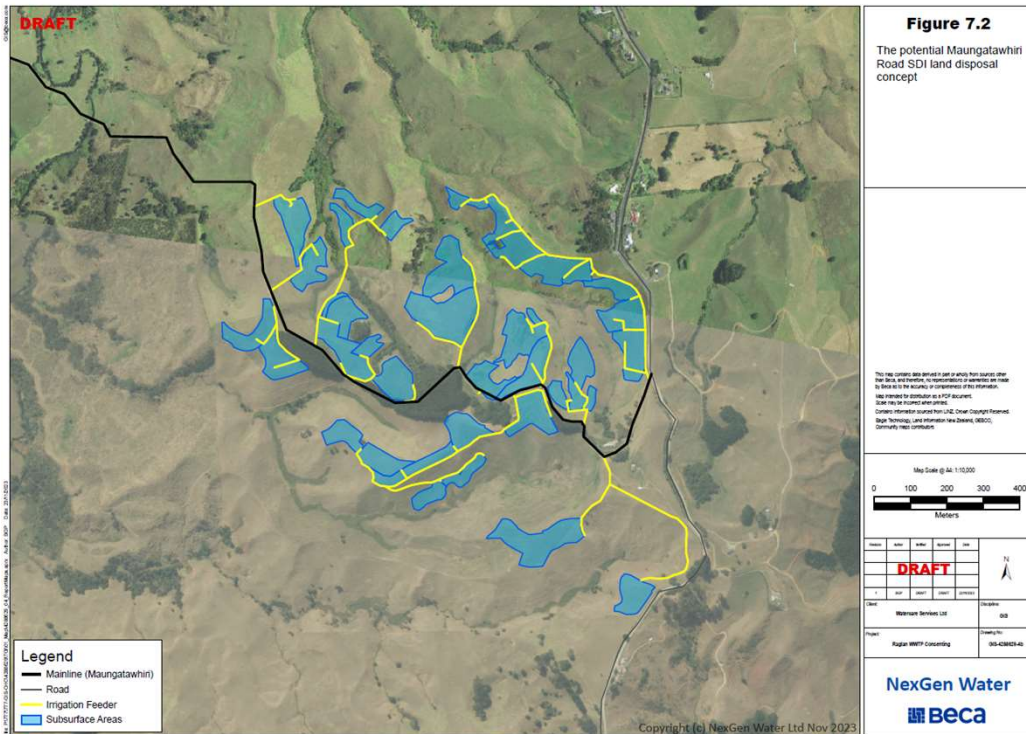
# Whaingaroa / Raglan WWTP Discharge Consent Application Project

April 2024 – Community Update

1. Consenting Tasks Underway
2. Plant Upgrade Update

# Current Investigations and Studies

- SDI studies have reached a conclusion for now at Maungatawhiri Road and Wainui Reserve

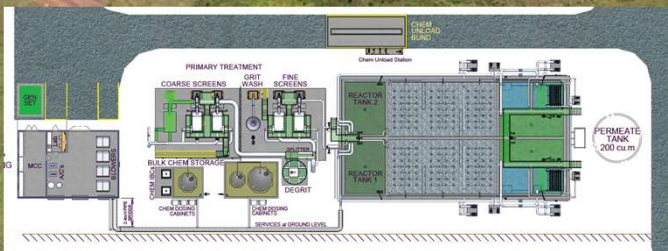


# Current Investigations and Studies

- Land contact options are now being looked at by Beca for 4 locations
  - Planted gully on western / coastal side of Wainui Reserve
  - Planted location on eastern / Wainui stream side of Wainui Reserve
  - Location within WWTP site which would drain to Wainui stream tributary
  - Wainui Stream Estuary location near WWTP entrance
- The options will be assessed by stakeholders when options development has been completed.
- The favoured options will then need Stream Ecology Assessment and Microbiological Risk Assessment (Health).



Enabling works is underway, along with the detailed design and procurement of the lead items.



## Layout of new Raglan WWTP – Membrane Bioreactor

The gravel raft is complete, and an initial concrete screen laid

