

Date : 10 JULY, 2022

REFERENCE : GULLY BACKFILL ON Lot9 DP1278/DP25272 adjoining Lot8 DP1278 that created a man-made DUCKPOND for recreational hunting in Lot8.

To whom it may concern.

Below is a chronological order of the backfilled region where the region in question circled in BLUE is a man-made drainage problem creating a saturated region of backfilled material that was hauled from Weavers pit (State Coal, Coal Corporation) that is now Lake Puketirini.

Lack of drainage in the backfill along with landform consolidation (sinking) resulted in a spring formed by compacted clay layers and then the surface water run-off has lifted the equ-potential hydrological water level flowing from the higher regions to form a "spring". This spring was problematic being a saturated localised area that was continuously cleaned out with an excavator to reduce a larger area forming unproductive land. In the end, this region was re-profiled to create a curved man-made DUCKPOND in Lot8 DP1278 for recreational hunting, along with trees planted around the perimeter and fenced off from stock.

Any further details please me.

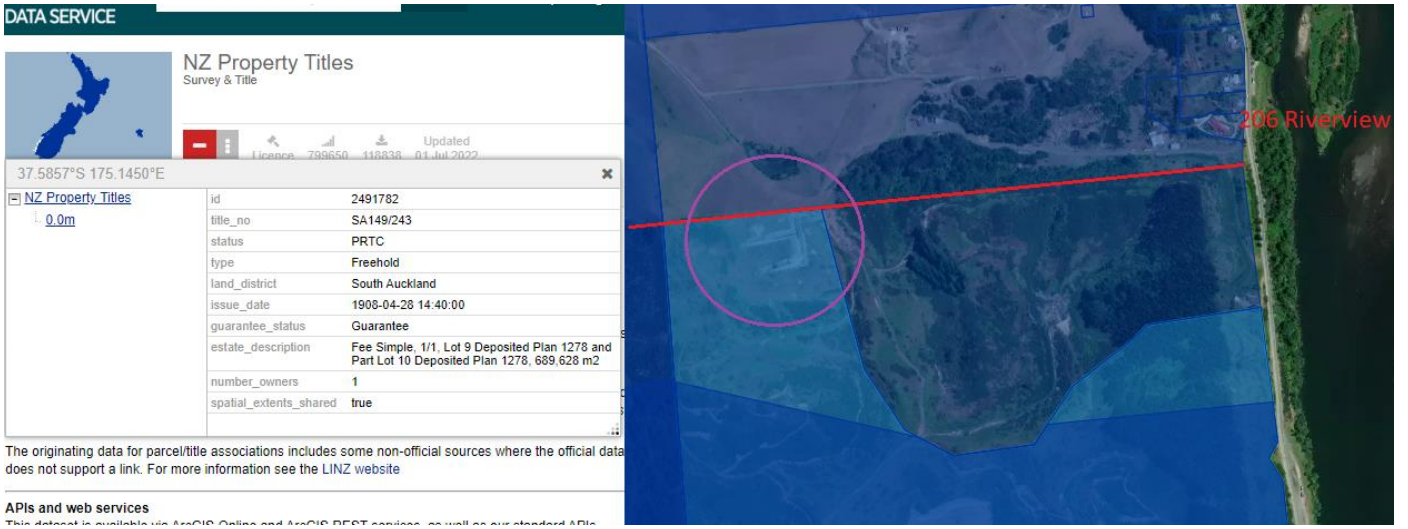
Regards

*M. O'Reilly*

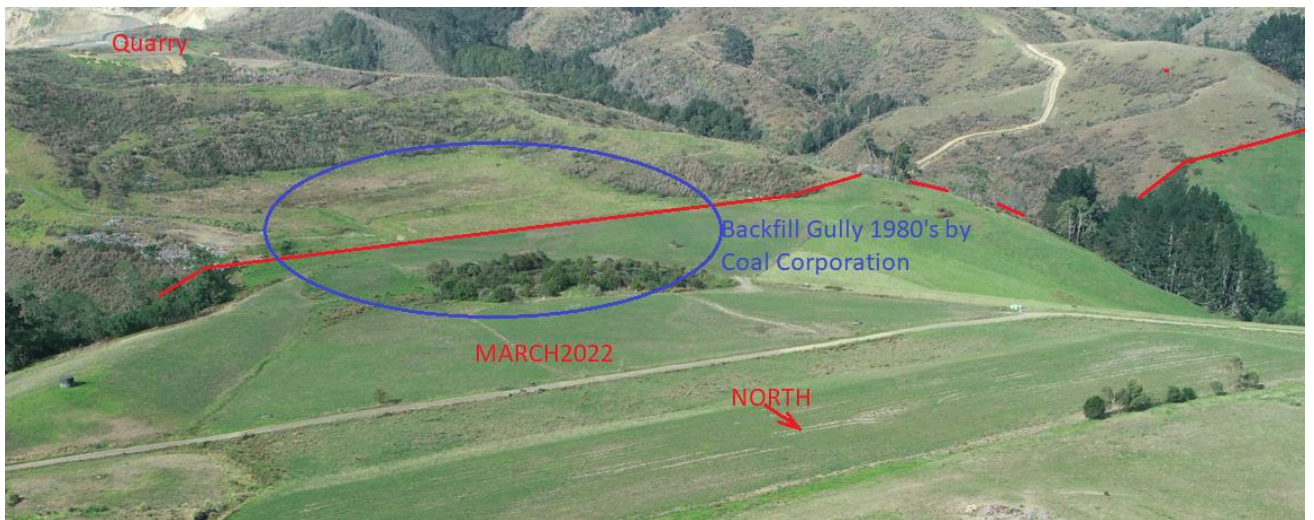
Mike



Fig 1. Man-made DUCKPOND indicated, blue circle was the last State Coal backfill, red line is land boundary



**Fig 2. Land Parcels – Lot9 on DP1278 / DP25272**



**Fig 3. Image 5<sup>th</sup> March 2022 looking south towards neighbouring quarry**



**Fig 4. Duckpond curved orientation latest aerial from LINZ approx. year 2020**

The following pages are in chronological order, with location to 206 Riverview road, the old family homestead near the Waikato river, and the demarcation land boundary as a red line running west to east, north is pointing up the page.

With reference to the <https://retrolens.co.nz/map> site, historic images illustrate that this region was a gully and backfilled in early 1980's with Sate Coal (prior to Coal Corporation) excavating Weaver's pit (that is now Lake Puketirini – adjoining Lake Waahi).

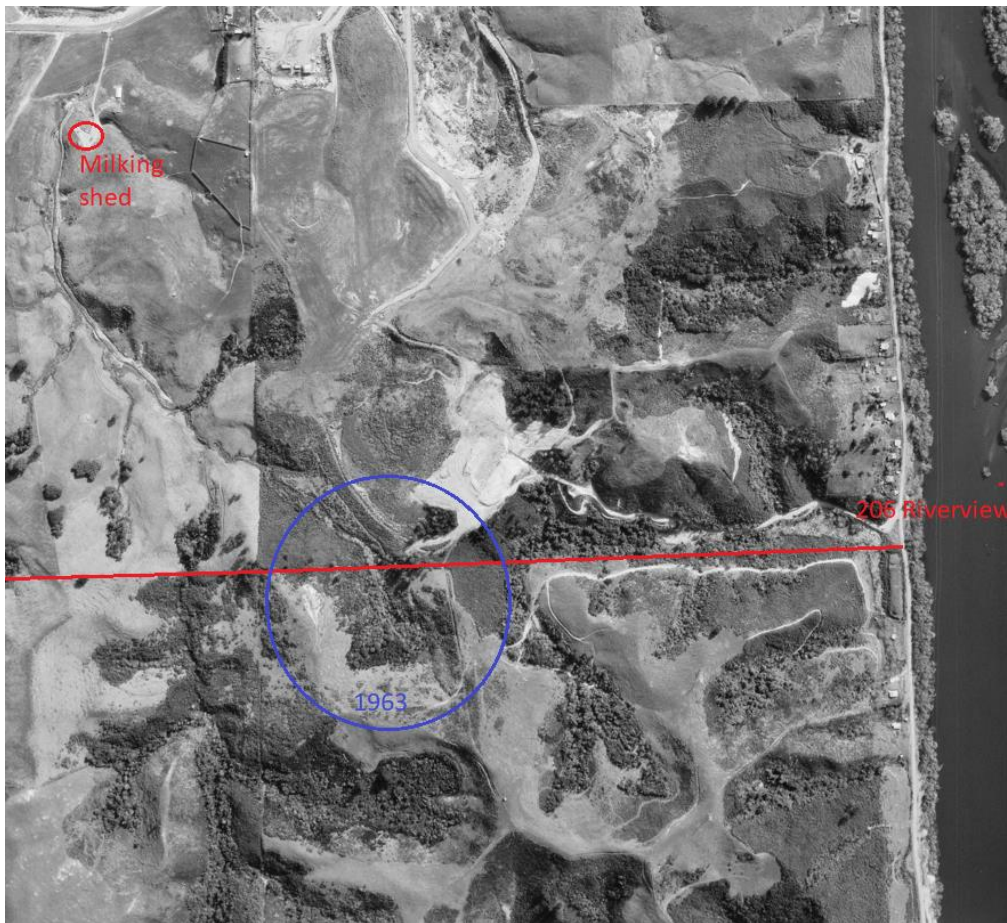


Fig 5. 1963 image illustrating gully and adjoining land boundaries



Fig 6. 1972 image with gully still present prior to backfill



Fig 7. 1979 image prior to gully backfill in early 1980's, the northern part in Lot8 already backfilled from State Coal



Fig 8. 1991 image illustrating backfill imported from Weaver's pit (Lake Puketirini) with State Coal (Coalcorp).