

*Waikato River Clean-up Trust*  
Funding Strategy

2016



Waikato River  
Authority



Cover photograph: Lake Rotopiko restoration undertaken by the National Wetland Trust with funding from the Waikato River Authority

# Contents

Introduction from the Co-chairs	4
The Waikato River and its catchment	6
Map of the Trust area	7
<b>Section 1: Background</b>	
1.1 The Authority and its role	8
1.2 The purpose of this document	8
1.3 The Waikato River Clean-up Fund	8
1.4 Background documents to support applications	9
1.5 Ten year goal	9
<b>Section 2: Criteria for applicants and applications</b>	
2.1 Criteria for applicants and applications	10
2.2 Threshold Criteria	10
2.3 Objectives outlined in legislation	10
2.4 General requirements for all applicants	11
2.5 Other matters for consideration	12
<b>Section 3: Priorities for funding</b>	
3.1 Background	13
3.2 Priorities	13
<b>Section 4: Information requirements</b>	
4.1 Information requirements and priorities to guide applicants	16



# From the Co-chairs

This is the 6<sup>th</sup> Funding Strategy to be published since the inception of the Waikato River Clean-up Trust and its sole Trustee the Waikato River Authority.

Each year the Trust reviews its Funding Strategy prior to the funding rounds. The Funding Strategy demonstrates the Trust's and Authority's determination to restore and protect the health and wellbeing of the Waikato River.

In this 6<sup>th</sup> funding round the Authority provides greater direction and guidance for applicants seeking funding to help clean-up the river.

Among the areas the Authority is maintaining or giving increased priority to are:

- **Water quality:** A greater emphasis on projects that can demonstrate a high level of certainty around water quality improvement.
- **Collaboration:** Continued support for projects that involve a range of groups working together to address specific issues impacting the river and its catchment.

This year will see up to \$6 million made available for clean-up projects. However we again stress the need for co-funding to be part of successful applications. The funds available to the Trust and the Authority will not be sufficient on their own to see the vision for a restored and protected Waikato River achieved.

To date there have been 170 projects funded by the Trust through the Authority with committed funds approaching \$27 million. We look forward to receiving and approving more high quality projects this year that will help us achieve the vision for the Waikato River.

Teena koutou, teena koutou, teena koutou katoa.



A handwritten signature in black ink, appearing to read 'Tukoroirangi Morgan'.

**Tukoroirangi Morgan**  
Co-chair



A handwritten signature in black ink, appearing to read 'John Luxton'.

**Hon John Luxton**  
Co-chair

Right: Field trip to the Muir dairy farm near Aka Aka in the lower Waikato River catchment



Right: Visiting students carrying out weed removal on the Waikato River Trails



Right: Annual General Meeting of the Waikato River Authority in 2015 in Pukekohe



Right: Eel monitoring in the lower Waikato River as part of the Manaaki Tuna project by Waikato-Tainui College for Research and Development



Below: Police divers assemble for training removing old car wrecks from the Waikato River at Pukete north of Hamilton



Above: Mangakotukutuku Stream Care Group releasing native mudfish near Melville in Hamilton



Above: Rotohuna Primary School students planting their gully under direction from the Trees for Survival Trust.

# The Waikato River and its catchment

The Waikato River and its region has been populated for at least the past 700 to 800 years. The river provided physical and spiritual sustenance for large populations of Māori living along its catchment. Throughout that time it was a source of food, including tuna, other fish and plants. It was also an important waka route.

With the arrival of European settlers in the 1840s and 1850s the Waikato River was the main access route inland for traders and missionaries.

The last hundred years have seen sweeping changes to the region's landscapes where people have settled, used and created resources. Over time, the human activities along the Waikato River and the increasingly intensive land uses through its catchments have degraded the Waikato River and reduced the relationships and aspirations of communities who identify with the Waikato River.

---

***This degradation of the Waikato River and its catchment has severely compromised Waikato River iwi in their ability to exercise kaitiakitanga or conduct their tikanga and kawa.***

---

This degradation of the Waikato River and its catchment has severely compromised Waikato River iwi in their ability to exercise kaitiakitanga or conduct their tikanga and kawa.

Through the Treaty Settlement process between Waikato-Tainui and the Crown the Guardians Establishment Committee was formed with the support of other Waikato River iwi. In 2009 the Guardians Establishment Committee finalised its Vision and Strategy for the Waikato River. That Vision and Strategy, "to restore and protect the health and wellbeing of the Waikato River", has been incorporated in the settlement legislation for the Waikato River Raupatu Claim – the legislation under which the Authority is constituted. The Authority assumed guardianship of the Vision and Strategy at the time of its formation in 2010.

In 2012 the Nga Wai o Maniapoto legislation was enacted to include the upper catchment of the Waipa River through to its junction with the Waikato River. The Vision and Strategy now applies to the whole of the Waipa River catchment.

The Vision and Strategy incorporates the objectives sought by Waikato-Tainui and that also reflect the interests of Waikato River iwi and of all New Zealanders.

These objectives encompass all people of the Waikato River and their relationships with it – through their communities, industries, and their environmental, recreational, social and cultural pursuits.

---

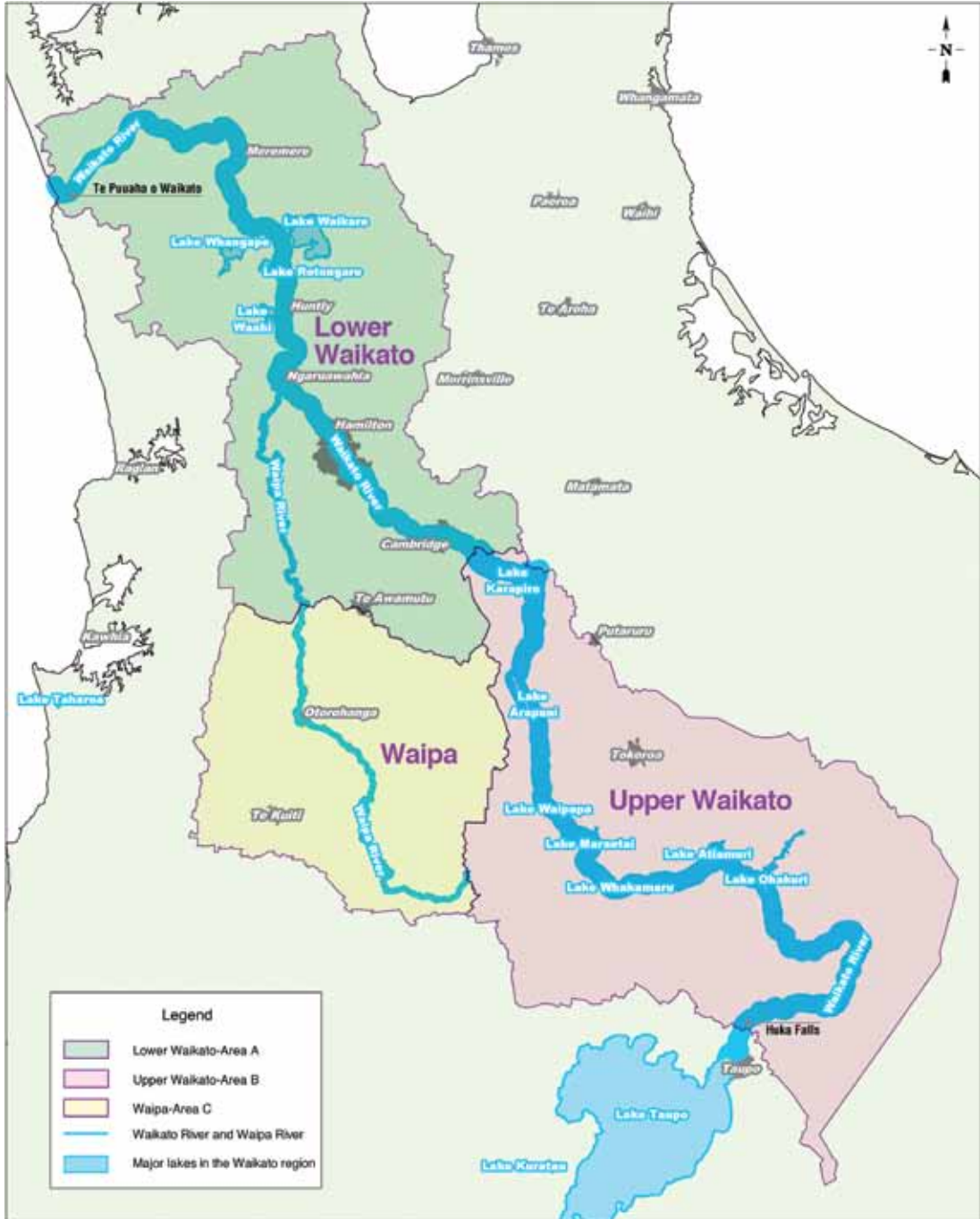
***A number of important actions are being taken to support the achievement of the Vision and Strategy, such as the Waikato Regional Council's Healthy Rivers plan change.***

---

A number of important actions are being taken to support the achievement of the Vision and Strategy, such as the Waikato Regional Council's Healthy Rivers plan change.

This plan change, with a focus on water quality within the catchment, will provide a regulatory framework to help achieve the objectives of the Vision and Strategy. Alongside this the development of a five - 15 year restoration strategy for the catchment should result in a more cohesive, prioritised and coordinated approach to restoration activities in the years to come.

Map of the Trust area







# 1/ Background and context

## 1.1 The Authority and its role

The overarching purpose of the legislation that created the Waikato River Authority ('the Authority') and the Waikato River Clean-up Trust (the 'Trust') is to restore and protect the health and wellbeing of the Waikato River and its catchment for future generations.

The purpose of the Authority is to:

- Set the primary direction through the Vision and Strategy to achieve the restoration and protection of the health and wellbeing of the Waikato River for future generations
- Promote an integrated, holistic, and co-ordinated approach to the implementation of the Vision and Strategy and the management of the Waikato River
- Fund rehabilitation initiatives for the Waikato River in its role as trustee for the Waikato River Clean-up Trust.

The Authority is the sole trustee of the Waikato River Clean-up Trust. The Trust administers and distributes a contestable fund to work towards the restoration and protection of the health and wellbeing of the Waikato River for present and future generations (this forms the Trust's objective). In doing so it must pay adequate regard to the Vision and Strategy and the Waikato River Independent Scoping Study (WRISS). As the sole trustee the Authority determines which projects receive funding in accordance with criteria set annually.

The area that this Strategy applies to is the Waikato River and its catchment from Huka Falls to Te Puuaha o Waikato and the upper catchment of the Waipa River through to its junction with the Waikato River (as shown in the map on page 7). The "River" is defined in the Settlement Legislation as including the main stem, the tributaries, and all associated lakes and wetlands within the catchment.

## 1.2 The purpose of this document

The Trust reviews funding priorities annually to ensure funding continues to be aligned with the objectives of the Trust and the Authority. To help achieve this the Authority has formed, with other members of the community, the Waikato River Restoration Forum to support a comprehensive and connected approach to clean-up projects.

This document forms the Funding Strategy for 2016 for the Trust. It presents the criteria that the Authority believes will best position the Trust to award funds in a fair and consistent manner to projects that will not only meet the requirements set out in its legislation but will also lead to the most effective response for the restoration and protection of the health and wellbeing of the Waikato River and its catchment.

Priorities are presented both in terms of the geographical areas the Authority believes should draw particular focus from applicants, and also the nature of the projects the Authority believes are a high priority in and across those geographical areas.

## 1.3 The Waikato River Clean-up Fund

The Trust is responsible for administering a Clean-up Fund of \$220 million over 30 years. This year the Trust has decided that up to \$6 million will be available in the funding round.

Annual funding decisions are based on:

- Applicants meeting the funding criteria
- Applications being for projects identified as priority areas by the Trust
- The quality of the applications received.

The Clean-up Fund is contestable. The Trust may or may not award all or any of the identified funds in a funding round as this will depend on the quality of applications received and the quantity of funding sought by applicants. The Trust may also award a lesser amount than that applied for.

The timing for this round of funding is:

- Funding round opens for applications 1 July 2016
- Funding applications close 18 August 2016
- Decisions announced to successful applicants in November 2016
- Deeds of Funding completed by 30 January 2017 (the Trust reserves the right to withdraw funding from applicants not able to complete the Deed of Funding as required). Applications should be for works that are intended to start on or after 1 February 2017.

The Trust is open to funding a range of projects at different scales and over varying time frames. This could include one-off short term projects as well as projects taking up to five years, all to be funded from the current funding round.

All applications for funding must be completed using the application portal available on the Authority's website [www.waikatoriver.org.nz](http://www.waikatoriver.org.nz). This will be available as of 1 July 2016.

#### 1.4 Background documents to support applications

Applicants may find the following documents useful background in preparing applications:

- The Waikato-Tainui Raupatu Claims (Waikato River) Settlement Act 2010 and the Waikato Tainui Environmental Plan
- The Ngati Tuwharetoa, Raukawa and Te Arawa River iwi Waikato River Act 2010
- The Nga Wai o Maniapoto (Waipa River) Act 2012 and Ko Tā Maniapoto Mahere Taiao – The Maniapoto iwi Environmental Management Plan 2016
- The Vision and Strategy for the Waikato River
- The Waikato River Independent Scoping Study

These documents are available online at [www.waikatoriver.org.nz](http://www.waikatoriver.org.nz) along with a list of previously funded projects. Applicants should also consider the priorities identified within the various River iwi (Tuwharetoa, Te Arawa, Raukawa, Waikato-Tainui, and Maniapoto) environmental management plans, fisheries plans and associated environmental prioritisation documents (e.g. Maniapoto Priorities for the Restoration of the Waipa River Catchment), as well as other catchment focused restoration strategies when developing their application.

#### 1.5 Ten year Goal

**The Authority and Trust have a ten year goal – “to protect the Waikato River and its catchment from a further decline to its health and wellbeing”.**

The Trust anticipates this goal will guide funding decisions. This will also help ensure funding rounds are integrated, so that annually funded projects cohesively and logically work towards achievement of the Goal. Progress against the Goal will be reviewed and the funding priorities may change over time to reflect the outcome of these reviews.

## 2/ **Criteria for applicants and applications**

### 2.1 **Criteria for applicants and applications**

The four key guiding concepts for the Trust are: Protect – Restore – Health – Wellbeing. In relation to the Waikato River and its catchment these concepts define much of the criteria for what sort of projects should be funded. The Trust has developed a range of criteria that guide applicants in considering whether (and how) to prepare an application for funding. Some of these criteria are mandatory (i.e. all applicants must meet them), and others are intended to guide applicants in terms of the Trust's priorities.

### 2.2 **Threshold criteria**

The Trust expects that all applications should meet the following broad 'threshold tests' before being considered eligible for funding:

- Any organisation or group applying for funds of more than \$10,000 must be GST registered (this includes organisations who make multiple successful applications in a single funding round that total over \$10,000)
- Projects must be focused on one or more of the four key guiding concepts of protecting, restoring, health and wellbeing in relation to the Waikato River and its catchment
- Projects must be technically achievable, and applications must clearly demonstrate this
- Preference will be given to projects that are able to demonstrate to a high level, certainty of success
- Applicants must describe how the project will achieve benefits across two or more of the four wellbeings of cultural, social, environmental and economic
- Applicants must know the outcomes the projects will deliver and be clear what constitutes 'success'. Project applications must demonstrate how monitoring against objectives will occur (e.g. site visits and peer review both during the project and after it is completed)
- The project should provide an outcome that will be maintained into the future without the need for ongoing funding from the Trust.

### 2.3 **Objectives outlined in legislation**

In addition to the Threshold Criteria above, all applications for projects are required to meet the objectives of the Trust outlined in the legislation and summarised below. These include:

- a) The Trust should not fund a project or a part of a project that another agency should or would fund (or be likely to fund) in the normal course of its operations if the Trust did not exist, eg. fencing of waterways on dairy farms, or activities that a territorial authority should undertake as part of their role would not be funded
- b) The Trust seeks efficiency in the allocation and use of funding, including having particular regard to the desirability of applicants using matching or supplemental funding from other sources, ie. higher co-funding (either in-kind or cash) is beneficial
- c) Preference will be given to projects that achieve practical results over projects that are purely for research purposes
- d) The Trust requires that adequate regard be given to the Vision and Strategy in applications, including clear demonstration of how proposed projects will give effect to the Vision and Strategy
- e) The Trust requires that adequate regard be given to the report of the Waikato River Independent Scoping Study
- f) The Trust requires that adequate regard be given to any other relevant research (either within or outside the Waikato Catchment)

- g) The Trust requires that adequate regard be given to the extent to which projects would further iwi environmental plans, in the case of applications from iwi or applications based on Maatauranga Maaori or on the mauri of the Waikato River.

## 2.4 General requirements for all applicants

In addition to each application meeting the criteria outlined above, all prospective applicants must meet the following general criteria:

- **GST**  
All funding applications must refer to **GST inclusive figures** at all times. Because the Waikato River Clean-up Trust receives its funding from the Crown in GST inclusive amounts, all funding business will be conducted in this way.
- **Legal Entity**  
Funding applicants must be a legal entity in New Zealand, and for projects over \$10,000 (or multiple successful applications from a single entity amounting to more than \$10,000 in a single funding round) must be GST registered. Applicants must not be currently registered as bankrupt or insolvent.
- **Health and Safety**  
All applicants must confirm that they understand their health and safety obligations in relation to the work for which a grant is sought, and have considered these in connection with the methods, materials, personnel and timeframes proposed. They must also confirm that they have procedures in place to meet these obligations. Where a project involves work which has the potential to result in injury or illness, applicants must provide a draft health and safety plan as part of the application.
- **Trust Indemnified**  
If the Trust suffers any loss or damage as a result of any act or omission of a Recipient, its employees, agents or contractors, the Recipient shall fully indemnify the Trust.
- **Deed of Funding**  
All successful applicants will be subject to the terms and conditions of the Trust – The Deed of Funding (available from [www.waikatoriver.org.nz](http://www.waikatoriver.org.nz)). The Deed of Funding, which represents the funding contract between the Authority and the Recipient, must include a detailed project plan. This plan, at a minimum, shall contain:  
Deliverables (the identifiable outcome(s) that will be delivered by the project as a whole)
  - Key tasks (the key activities that will be undertaken to deliver the project successfully and for which reporting and invoicing will occur)
  - A project budget including requested contributions from the WRA, cash co-funders and in-kind contributors.
- **Co-funding**  
The Authority anticipates that all successful applications will have an element of co-funding included as part of their project. All other things being equal, the greater the level of co-funding, the greater the weight the Trust will give to the application. Co-funding can only include new funding, and not funding used or activity undertaken prior to this specific project being started. Quantified in-kind activity may constitute an element of co-funding as may funding from other sources.
- **Financial and Reporting Systems**  
The Authority requires all applicants to maintain sufficient financial and reporting processes to provide confidence that any funds awarded are used in the most appropriate manner to achieve the objectives of the project.

## 2.5 Other matters for consideration

### **Related projects**

The Trust considers it advantageous if newly funded projects are related to adjacent or nearby restoration and/or protection projects, and/or build on existing initiatives. Previously funded projects may be found at [www.waikatoriver.org.nz/funded-projects/](http://www.waikatoriver.org.nz/funded-projects/)

The Trust recognises set-up costs may be required as part of applications for funding and these costs may include research, tools, training, and extension programmes. They must not include any capital purchases (i.e. items that can be used beyond the life of the project as part of a business e.g laptops, ipads, and machinery).

The Trust requires applicants to consult with the appropriate Waikato River iwi who hold mana whenua relevant to the project area.

The Trust will not fund works that are required arising from the statutory planning framework within the Waikato region, or by industry regulation.

The 'polluter pays' principle will apply to projects and the Trust will not generally fund a project to address discharges or contamination that are the responsibility of the entity that created them. In exceptional circumstances the Trust may consider funding projects with a high degree of public good on a co-funding basis with polluters.

It is important to note that the Trust provides funds to cover the costs incurred in completing an agreed project, up to the maximum value approved. Projects will be reimbursed for actual costs incurred only. Unspent funds will be used by the Authority for future restoration activities.

### **Fencing standards**

All projects receiving funding which include a component of planting are required to have permanent stock proof fencing erected to protect the planting. The following fencing standards have been developed to provide guidance as to the minimum standard required.

	Electric	Standard
Sheep (and cattle)	5 wire, permanent posts	7 wire, post and batten
Cattle only	3 wire, permanent posts	5 wire, permanent posts

Note: grant funds may not be used for fencing of waterways on dairy or dairy support properties.

### **Protection of sites**

Where funding of greater than \$100 000 is provided by the Trust, it is likely that a condition of funding will be that a protection mechanism (e.g. covenant or encumbrance) be put in place to protect the work undertaken. This will be treated on a case by case basis however applicants should state whether works will be legally protected as part of the application.

## 3/ Priorities for funding

### 3.1 Background

The Trust consulted widely and through its networks has drawn on a wide range of sources to develop its priority areas.

In setting the following priorities the Trust has also given adequate regard to the Waikato River Independent Scoping Study (WRISS).

The key purpose of the WRISS was to provide the Crown and Waikato River iwi with a sound and objective basis on which to make decisions about the priority actions required to restore and protect the health and wellbeing of the Waikato River for future generations.

### 3.2 Priorities

Priorities for funding fall into nine areas. The first three of these areas are geographically based.

#### 1. Karapiro Dam to Te Puuaha o Waikato (the mouth of the Waikato River) referred to in map Area A (page 7).

Priorities for Trust funding for this area include projects that address or demonstrate:

- Tangible outcomes in improving lake, river and stream water quality
- Improving connectivity between natural habitats, including for taonga species such as tuna
- Habitat enhancement at high priority lakes
- Restoration of iinanga spawning sites, including artificial habitat in the short term until native vegetation re-establishes. Projects may also consider installation of fish friendly flood gates to allow migration of whitebait species
- Restoration of catchment headwaters of the Lower Waikato, in particular in the Matahuru and Mangawara catchments, and that demonstrate clear water quality benefits for the Waikato River
- Improving the health of the Whangamarino wetland
- Improved access to the Waikato River, including to sites of significance to Haapu and marae
- Investigating native species establishment as dominant predators in the Waikato River and its lakes
- Restoring and protecting the health and wellbeing of the Waikato River.

#### 2. The Waipa River catchment referred to in map Area C and part of map Area A (page 7)

The primary environmental issues in this Area are sedimentation and microbial contamination. A 20-year Catchment Plan has been developed that maps out the most effective manner by which these issues can be addressed. Projects in this area will focus on those actions that support the implementation of this Catchment Plan.

Those applications that are based on the mauri of the Upper Waipa River should consider and document the extent to which the project will further the achievement of the Maniapoto Environmental Management Plan. Discussion of such projects with the Maniapoto Maori Trust Board is required.

Priorities for Trust funding for this area include projects that address or demonstrate:

- Tangible outcomes for water quality, in particular through reduction of sediment and E.coli load to the Waipa River.
- Land retirement/afforestation of severely eroding land, including hill country planting and forestry
- Biodiversity protection and restoration, including restoration of river network connectivity for biota to upstream habitats
- Wetland protection and restoration including of puna

- Protection of habitat of significant fisheries including tuna and pihirau
- Stabilisation of erosion hotspots including river banks at a scale appropriate for reducing suspended sediment loads
- The preservation of sites of significance along the Waipa River

### **3. Above the Karapiro Dam to the Huka Falls referred to in map Area B and part of map Area A (page 7)**

Priorities for Trust funding for this area include projects that address or demonstrate:

- Tangible outcomes in improving water quality including through nutrient reductions
- Wetland restoration, protection and recreation, including headwater seeps and springs
- Restoration and enhancement of waterways and puna of cultural significance to iwi
- Protecting the diversity of natural landscapes such as unique geothermal landscapes
- Protection and restoration of native fisheries and their habitats, including improved migration corridors for native species, especially tuna
- Improving the cultural, environmental and recreational values of the Waikato River hydro lakes
- Supporting Maori land blocks to achieve sustainability outcomes, where such outcomes give effect to the Vision and Strategy
- Supporting the prioritised areas for action identified in the Waikato Regional Council's Upper Waikato Zone Plan, specifically the Tahunaatara, Pokaiwhenua, Little Waipa and Whirinaki Arm subcatchments
- Improving access to the Waikato River, in particular to sites of significance to Hapuu and marae.

### **4. Maatauranga Maori**

We support projects specifically identified as Maatauranga Maaori. However Maatauranga Maaori may be supported in any of the funding areas outlined and, where appropriate, this should be acknowledged.

Maatauranga Maaori is usually used to mean 'Maaori knowledge' – distinctive knowledge created by Maaori in history and arising from their living circumstances, their world view and their experiences.

The Trust encourages applications that recognise the important contribution of Maatauranga Maaori to the clean-up of the Waikato River and its catchment. Projects that work to reinvigorate the relationship of the Waikato River iwi and the Waikato River will be especially supported. Five key areas have been identified:

- i. The improvement of the health and wellbeing of the Waikato River through the practice and implementation of Kaitiakitanga by its iwi, including through their tikanga.
- ii. The preservation and dissemination of traditional knowledge relating to the Waikato River, including knowledge of the historical connection of iwi to the Awa.
- iii. The development of kaitiaki tools to support Haapu and marae.
- iv. Restoration and enhancement of the mauri of the waterways in the Waikato River catchment.
- v. The preservation of sites of significance to iwi, including the preservation of knowledge of sites that no longer remain.

### **5. Projects that have a community outcome associated with the Waikato River and its catchment**

These may include (but are not limited to) projects that:

- Involve community catchment care groups

- Improve public access and experience of the Waikato and Waipa Rivers, including through the use of signage and electronic media
- Promote the transfer of sustainable land use skills that take an integrated approach to improving river health
- Support liaison between groups engaged in Clean-up Trust funded projects
- The undertaking of educational and communication activities that promote awareness of the values important to Waikato and Waipa River Iwi and that improve catchment understanding of the Vision and Strategy.

**6. Projects that contribute to iwi capacity building**

- The Trust encourages applications that assist River Iwi Trusts in providing professional capacity building and training opportunities to their marae and Hapuu. This may include (but is not limited to) support with project management and reporting, Health and Safety training and field operations.

**7. Projects that help the Trust to better ensure and monitor the efficiency and effectiveness of the use of Trust funding**

These may include (but are not necessarily limited to):

- The provision of programmes to ensure the Trust and its recipients are meeting the requirements of the Health and Safety at Work Act 2016.

**8. Projects that improve water quality in streams, wetlands, lakes and drains that flow into the Waikato River and its catchment.**

- Projects in and around streams, wetlands, lakes and drains where positive water quality outcomes are proven
- Projects that go beyond the standards required by Industry and/or regulation.

**9. Projects that protect and restore currently existing wetlands, and the creation of new wetlands throughout the catchment.**

- Wetlands are part of the natural filtering system of the catchment. They provide habitat for many species of flora and fauna, and provide a range of biological services that improve water quality. Over the last 100 years the area of wetlands within the Waikato catchment has been significantly reduced. The protection and restoration of existing wetlands, and the creation of new wetlands, will add significantly to the achievement of the Trust's 10 year Goal and the objectives of the Vision and Strategy. The restoration of historic wetland will be prioritised over the creation of new wetlands
- Projects that protect and restore wetlands may include (but are not be limited to):
  - Fencing stock from wetlands including puna, springs and seepages
  - Native planting.



## 4/ Information requirements

### 4.1 Information requirements and priorities to guide applicants

All applications for funding must be completed using the application portal available on the Authority's website [www.waikatoriver.org.nz](http://www.waikatoriver.org.nz). Applications must contain the following information:

#### **Objectives of the proposed project**

- What is the project, what are the benefits, when and where will it occur, and how long will it take?

#### **Outcomes of the proposed project**

- Identify the specific outcomes that the project will deliver.

#### **Vision and Strategy**

- Outline how the proposed project will contribute to the Objectives and Strategies in the Vision and Strategy.

#### **Fit with funding strategy**

- Identify how the criteria and priorities for the Trust are met, as outlined in this Funding Strategy 2016.

#### **Scope**

- Identify both what is in, and out, of scope.

#### **Proposed approach**

- Identify the proposed approach to successful implementation, including major tasks, deliverables (with dates) and budget.
- Identify approach to reporting, both during and after the project is completed.

#### **Personnel**

- Identify the proposed team and their respective roles, including any subcontractors (where known).

#### **Costs**

- Provide a breakdown of the estimated costs (**in GST inclusive amounts**) of the proposed project, clearly linking costs to the tasks in the application. Identify any matching or supplemental funds that are to be provided by others.

#### **Risks and mitigation**

- Identify major risks and proposed mitigation measures that will ensure the project is successfully delivered to time, cost, and quality requirements as outlined in the proposal.

#### **Health and Safety**

- All applicants must confirm that they understand their health and safety obligations in relation to the work for which a grant is sought, and confirm that they have procedures in place to meet these obligations. Where a project involves work which has the potential to result in injury or illness, applicants must provide a draft health and safety plan as part of the application.

#### **Previous experience**

- Provide a synopsis of the organisation's relevant experience for the proposed project
- Provide a synopsis of the proposed applicant and project teams' relevant experience. CVs are not required.

#### **Referees**

- Provide the contact details for two referees who will be able to comment on the quality of relevant work you have previously undertaken (both as an organisation and for individuals within the organisation).

## 5. Application evaluation

All applications are assessed by an Independent Evaluation Panel. This panel is appointed by the Waikato River Authority Trust Fund Manager in consultation with the Chief Executive. Panel membership is rotated periodically to ensure there is a balance between continuity and a spread of expertise across the range of applications we expect to receive.

No external parties influence appointment on the Independent Evaluation Panel, although the Trust does seek to have an appropriate Waikato Regional Council staff member participate so we can directly access the body of technical knowledge within council, and avoid funding duplication.

Conflicts of interest between Panel members and applications are managed as they arise.

There are three further stages after the recommendations are received from the Evaluation Panel before a project is accepted for funding:

1. A sub-committee of the board considers the Evaluation Panel recommendations, and makes recommendations to the full board of the WRCUT.
2. The full board considers the sub-committee recommendations and makes a final funding decision.
3. The Trust Fund Manager works with successful applicants to ensure a Deed of Funding is completed to our satisfaction. If it is not, a recommendation will go back to the full board for consideration.





