

# Representation Review Briefing - OTCB


8 June 2020



## Outline

- Overview of the Representation Review
  - Timeline
  - Communities of interest
-

# Overview of reviews.

- Three reviews Council to consider
    1. Electoral system – FPP v STV
      - consideration (mandatory) by 12 September 2020
    2. Maaori wards
      - consideration (optional) by 23 November 2020
    3. Representation arrangements review
      - optional but agreed with LGC to undertake
      - formal process 1 March – 31 August 2021
- 

# Representation arrangements review

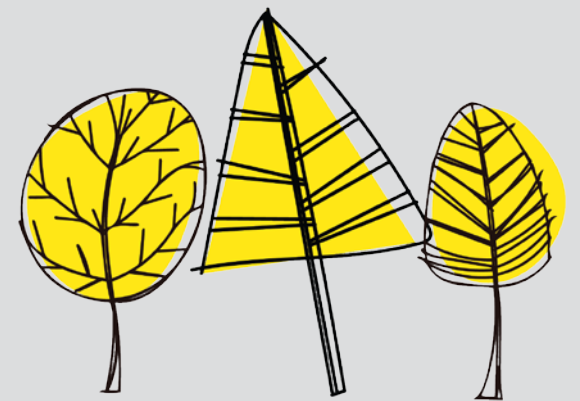
- Review of wards, community boards, boundaries, number members etc
- Three key factors:
  - Communities of interest
  - Effective representation of those communities
  - Fair representation of voters
- LGC Determination 2018



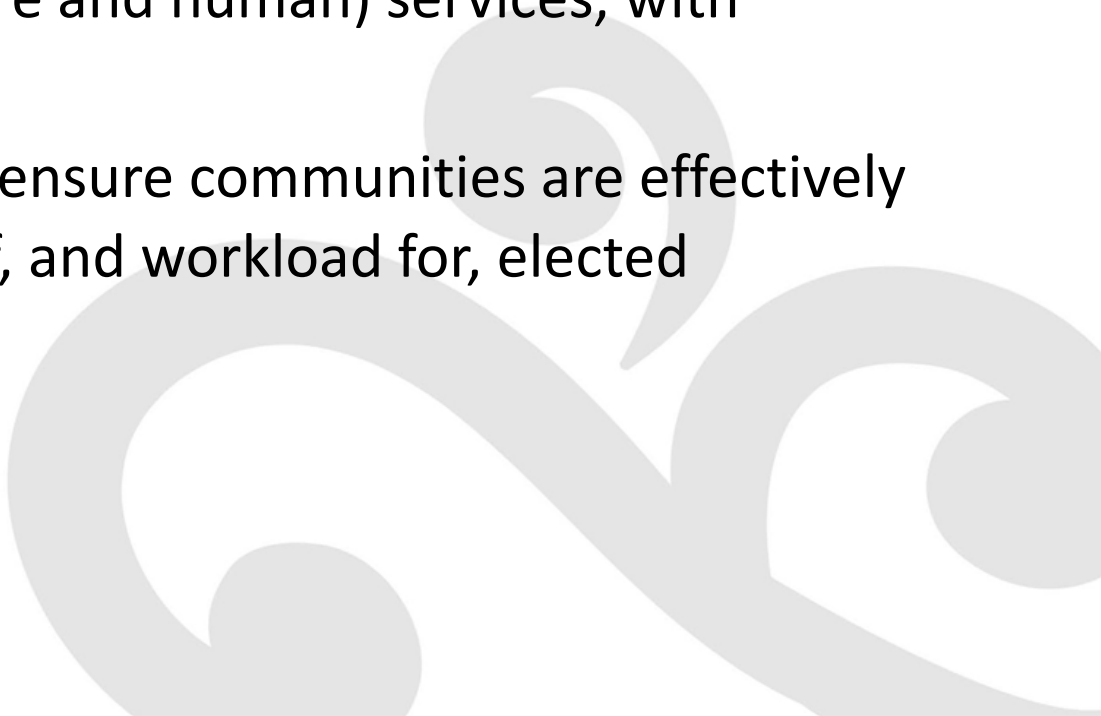
## Timeline

Date	
Now – February 2021	<ul style="list-style-type: none"><li>- Early consultation with communities to consider 'communities of interest' and options for representation arrangements.</li><li>- Workshops with Councillors and Community Boards</li></ul>
March 2021	Council decides on an initial proposal
April/May 2021	Submission period on initial period closes (not less than one month)
June/July 2021	Council considers submissions, hearings, determines final proposal
August/September 2021	Appeals/objections period on final proposal
Before 11 April 2022	LGC reviews and determines, if required.


# Questions?



## Communities of Interest

- Not defined in Local Electoral Act
  - 3 aspects to consider:
    - i. *Perception* – sense of belonging to a clearly defined area.
    - ii. *Functional* – the Council’s ability to identify and meet a community’s need for (infrastructure and human) services, with ‘reasonable economy’.
    - iii. *Political* – how the Council can ensure communities are effectively represented **and** the distribution of, and workload for, elected members are equitable.
- 

## Communities of interest - Discussion

- Do you have examples of things that have changed in your community in the last 3-6 years – i.e. joined communities together or created distinct communities?
  - What information would be useful to gather to better understand the local communities of interest?
  - How can we engage with the local communities to get to know more about them – especially those who don't usually engage?
- 



# Questions?

