

Agenda for a meeting of the Onewhero-Tuakau Community Board to be held in the Board Room, Tuakau Memorial Hall, George Street, Tuakau on **MONDAY 7 AUGUST 2017** commencing at **7.30pm**.

Note: A public forum will be held at 7.00pm prior to the commencement of the meeting.

*Information and recommendations are included in the reports to assist the Board in the decision making process and may not constitute Council's decision or policy until considered by the Board.*

**1. APOLOGIES AND LEAVE OF ABSENCE**

**2. CONFIRMATION OF STATUS OF AGENDA**

*Representatives will be in attendance from 7.30pm to discuss Funding Applications.*

**3. DISCLOSURES OF INTEREST**

**4. CONFIRMATION OF MINUTES**

Meeting held on Tuesday 6 June 2017 3

**5. REPORTS**

5.1	Youth Engagement Update August 2017	7
5.2	Discretionary Fund Report to 30 June 2017	20
5.3	Application for Funding – Glen Murray Community Equestrian Centre	22
5.4	Application for Funding- Tuakau Youth Sport Trust	34
5.5	Application for Funding – Te Kohanga Community Hall Inc.	54
5.6	Project Accountability Forms	80
5.7	Community Plan & Long Term Plan Projects	85
5.8	Onewhero and Glen Murray Rural Monthly Recycling Collection	87
5.9	Works & Issues Report	89
5.10	Bollard repair George Street CBD	93
5.11	Year to Date Service Request Report	96

- |      |  |               |
|------|--|---------------|
| 5.12 | Public forum                                     | <i>Verbal</i> |
| 5.13 | Chairperson's Report                             | <i>Verbal</i> |
| 5.14 | Councillors' and Community Board Members' Report | <i>Verbal</i> |

GJ Ion  
**CHIEF EXECUTIVE**  
Agenda 2017\OTCB\170807 OTCB OP

---

**Open Meeting**

<b>To</b>	Onewhero-Tuakau Community Board
<b>From</b>	Gavin Ion Chief Executive
<b>Date</b>	7 June 2017
<b>Prepared by</b>	Lynette Wainwright Committee Secretary
<b>Chief Executive Approved</b>	Y
<b>Reference/Doc Set #</b>	GOV0502
<b>Report Title</b>	Receipt of Minutes

**1. EXECUTIVE SUMMARY**

---

To confirm the minutes of the Onewhero-Tuakau Community Board meeting held on Tuesday 6 June 2017.

**2. RECOMMENDATION**

---

**THAT the minutes of the meeting of the Onewhero-Tuakau Community Board held on Tuesday 6 June 2017 be confirmed as a true and correct record of that meeting.**

**3. ATTACHMENTS**

---

OTCB minutes 6 June 2017

**MINUTES** of a meeting of the Onewhero-Tuakau Community Board held in the Rugby Clubrooms, 11 Hall Road, Onewhero on **TUESDAY 6 JUNE 2017** commencing at **7.34pm**.

**Present:**

Mr B Cameron (Chairperson)  
Cr J Church  
Cr B Main  
Ms C Conroy  
Mr S Jackson  
Mr V Reeve  
Mrs B Watson

**Attending:**

Cr S Henderson  
Mr GJ Ion (Chief Executive)  
Mrs LM Wainwright (Committee Secretary)  
Members of the public

**APOLOGIES AND LEAVE OF ABSENCE**

**Resolved: (Crs Church/Ms Conroy)**

**THAT** an apology be received from and leave of absence granted to **Mr Petersen**.

**CARRIED on the voices**

**OTCBI706/01**

**CONFIRMATION OF STATUS OF AGENDA ITEMS**

**Resolved: (Mr Jackson/Mr Reeve)**

**THAT** the agenda for a meeting of the Onewhero-Tuakau Community Board held on Tuesday 6 June 2017 be confirmed and all items therein be considered in open meeting;

**AND THAT** all reports be received.

**CARRIED on the voices**

**OTCBI706/02**

**DISCLOSURES OF INTEREST**

There were no disclosures of interest.

**CONFIRMATION OF MINUTES**

**Resolved: (Cr Main/Mrs Watson)**

**THAT** the minutes of a meeting of the Onewhero-Tuakau Community Board held on Monday 1 May 2017 be confirmed as a true and correct record of that meeting.

**CARRIED on the voices**

**OTCBI706/03**

**REPORTS**

Discretionary Fund Report to 24 May 2017

Agenda Item 5.1

The report was received [*OTCBI 706/02 refers*] and discussion was held.

Works & Issues Report

Agenda Item 5.2

The report was received [*OTCBI 706/02 refers*] and discussion was held.

Project Accountability Forms

Agenda Item 5.3

**Resolved: (Ms Conroy/Mr Jackson)**

**THAT** the Board notes that the following amounts have been spent:

<b>Pukekawa Boys &amp; Girls Agriculture Club</b>	<b>Upgrading sports courts- new fencing and basketball hoops</b>	<b>\$2,875.00</b>
<b>Tuakau Youth Hunt</b>	<b>Crime prevention signs</b>	<b>\$3,362.72</b>
<b>Trust Waikato Sunset Beach Lifeguard Service</b>	<b>Employment of Lifeguards to cover the holiday period 2016-2017</b>	<b>\$2,300.00</b>

**CARRIED on the voices**

**OTCBI706/04**

Public Forum  
Agenda Item 5.4

The following items were discussed at the public forum:

- Off lead dog area required in Onewhero
- Refuse and recycling
- BMX track in reserve area – community will build
- Playground at the Onewhero Domain is being well received
- Toilets at the Onewhero Domain are nearly complete
- Onewhero Rugby Club is looking to purchase a bottle crusher

Chairperson's Report  
Agenda Item 5.5

The chairperson gave a verbal report on the following items:

- Attended a meeting at Wairamarama after the June floods to discuss roading issues
- Attended an SNA meeting

Councillors' and Community Board Members' Report  
Agenda Item 5.6

Verbal reports were received on the following items:

- Community Board workshop attended. Discussion on engaging our communities and raising the profiles of Community Board members
- A possible project for the Board is to encourage more engagement with the Waikato Regional Council
- Youth update from Tuakau area
- Rural Women hardship grants have been made following the June floods
- Reminder that there is an inorganic refuse collection from 12-17 June
- PC16 – Board would like an update (workshop)
- Kowhai Street – contamination of old tip grounds
- Youth update – tree planting
- Community Board Conference was very successful
- Community engagement with other groups is required eg. Lions Club
- Youth working with elderly

There being no further business the meeting was declared closed at 8.39pm.

Minutes approved and confirmed this \_\_\_\_\_ day of \_\_\_\_\_ 2017.

**BB Cameron**  
**CHAIRPERSON**  
Minutes 2017/OTCB/170606 OTCB Minutes

### **Open Meeting**

<b>To</b>	Onewhero-Tuakau Community Board
<b>From</b>	Tony Whittaker General Manager Strategy & Support
<b>Date</b>	18 July 2017
<b>Prepared by</b>	Shannon Kelly Youth Engagement Advisor
<b>Chief Executive Approved</b>	Y
<b>Reference #</b>	GOV0514 / 1774957
<b>Report Title</b>	Youth Engagement Update August 2017

## **1. EXECUTIVE SUMMARY**

---

The purpose of this report is to provide the Onewhero-Tuakau Community Board with an update of recent activities of the Onewhero and Tuakau Youth Action Groups, and an update from Council's Youth Engagement Advisor, Shannon Kelly about the Govern Up project.

## **2. RECOMMENDATION**

---

**THAT** the report from the **General Manager Strategy & Support** be received.

**AND THAT** if there are any issues identified in this report that the **Board** wishes to progress, that these be added to the **Board's Works and Issues** report so that progress on implementation can be monitored.

## **3. GOVERN UP –YOUTH DEVELOPMENT PROGRAMME**

---

The Govern Up programme was successful in both Onewhero and Tuakau, and has been the case in many other areas of the Waikato District.

The Onewhero Youth Action Group ran a fantastic event called Adopt a Tree on Saturday, 17 June 2017. The project started when the Youth Engagement Advisor asked the group to consider and plan an event that would help benefit the Onewhero community. The group planned and implemented the Adopt a Tree project in three months, and arranged trees for the project through Councillor Jacqui Church. 50 families attended to "adopt" a free fruit tree and community engagement was high. The event was strongly supported by Councillor Jacqui Church and Youth Engagement Advisor Shannon Kelly, however real credit is due to the whole Onewhero Youth Action Group for their strong decision making skills and leadership ability.

Attached is feedback given by the Onewhero Youth Action Group on the day of the event. The feedback will go on to inform the next round of youth engagement that takes place with the Onewhero Youth Action Group and the Youth Engagement Advisor.

The Tuakau Youth Action group also ran a fantastic event called Adopt a Tree on Saturday, 16 July 2017. The group met at 10am and were finished by 1.30pm. All 50 trees were adopted and communities in Onewhero, Tuakau, Meremere, Pokeno and Port Waikato benefited from the event. The Tuakau Youth Action Group was strongly supported by Community Board member Bronwyn Watson and Councillor Jacqui Church as well as good support from Tuakau College School Counsellor Paul Heta.

These Govern Up projects have gained a lot of social media and a good reputation across our district. Reporting to the Ministry of Youth Development in July 2017 regarding the entire Govern Up project is attached for your information.

A collection of photos and videos from the both the Onewhero and Tuakau Adopt a Tree events are appended to this report.

#### **4. ATTACHMENTS**

---

Attachment 1: Onewhero Youth Action Group feedback – Adopt a Tree event

Attachment 2: Report to the Ministry of Youth Development in July 2017 (via participant online survey)

Attachment 3: Selection of photos and social media posts for the Govern Up project in Onewhero and Tuakau

Attachment 4: Onewhero Youth Action Group photos and videos

([https://www.dropbox.com/sh/ocxdfsuquvvcq5/AADE-0jBDhUdAybn\\_ONmsjbra?dl=0](https://www.dropbox.com/sh/ocxdfsuquvvcq5/AADE-0jBDhUdAybn_ONmsjbra?dl=0))



## ATTACHMENT I: Onewhero Youth Action Group Feedback – Adopt a Tree Event

### Project: Adopt a Tree Event

Things that worked well	Things that were missing / could have been improved / we will know better for next time	Now that you have completed this project and know what you know, is there anything new that has come up for you to try or improve in your community?
<ul style="list-style-type: none"> <li>- Good communications about the event</li> <li>- Great engagement by the community</li> <li>- Young people, children, grandparents with grandchildren and families came down and took trees</li> <li>- Had a line of people waiting at 8.30am for their trees – most went in the first 15 minutes</li> <li>- Facebook was hugely successful for promoting the event</li> <li>- Lots of really positive feedback about the event</li> <li>- Having the event on Saturday across the road from the rugby grounds made rugby people come</li> </ul>	<ul style="list-style-type: none"> <li>- Next time we would make signs that could have attracted people</li> <li>- On Saturdays, families have rugby and netball, so we could have chosen a different day like a Sunday</li> <li>- Could have involved more youth</li> <li>- Didn't get to pick the trees</li> <li>- Next time we could make a poll – which trees would you like to see?</li> </ul>	<ul style="list-style-type: none"> <li>- Seeing how involved people are on Facebook pages, we could poll our community next time to see what they would prefer e.g like a dog place</li> <li>- Our community is intergenerational so something that targets all of the generations, not just young people is important</li> <li>- Could have had more decisiveness</li> <li>- Next time we'll be better able to handle any of these smaller issues that come up</li> </ul>

**ATTACHMENT 2****Response to Ministry of Youth Development Participant report online survey****10 July 2017****Retrieved from Quarterly Youth Service Provider Report – 2016 / 2017****Introduction**

As part of your contract with the Ministry of Youth Development you are required to complete and submit this report on a quarterly basis. This will allow us to:

- monitor the number of opportunities being offered and delivered to young people in your area,
- estimate the percentage of young people interacting with these services that are from a disadvantaged background,
- understand any changes being made to the services that you deliver, and
- obtain some examples of success stories through narrative reporting.
- monitor the extent to which your programmes and opportunities are improving the capability and resilience of young people,
- monitor how satisfied the young people are with the service that they are receiving, and
- gain some narrative reports from young people about their experiences.

...

**Which period are you reporting on?**

1 April 2017 to 30 June 2017 (Quarter 4)

**4. Please record the total number of unique individual young people that you have worked with during this quarter:**

92 in the programme – 566 young people attended events run by young people

**5. And now please record the total number of unique individual young people you have worked with since 1 July 2016:**

120

**8. Please provide an explanation of any differences (if any) between the volumes contracted and the volumes delivered:**

We originally planned to have at least 60 young people from towns in our Waikato District to participate in the Govern Up project, but we had 92 young people join up, and approximately 566 young people engaged in the activities created by youth. This was because they were interested and engaged at a level that allowed them to fully participate. Once young people got comfortable planning their projects, a roll on effect occurred where the project teams told their friends and their friends and other interested young people wanted to join in. As a result we had approximately 92 young people involved in the planning and volunteering of eight events. At each event we had a total tally of approximately 566 young people from our district being involved, engaged or participating in the events.

**9. Please provide details of 3 successes of your activities:****Project one: Onewhero Planting day:**

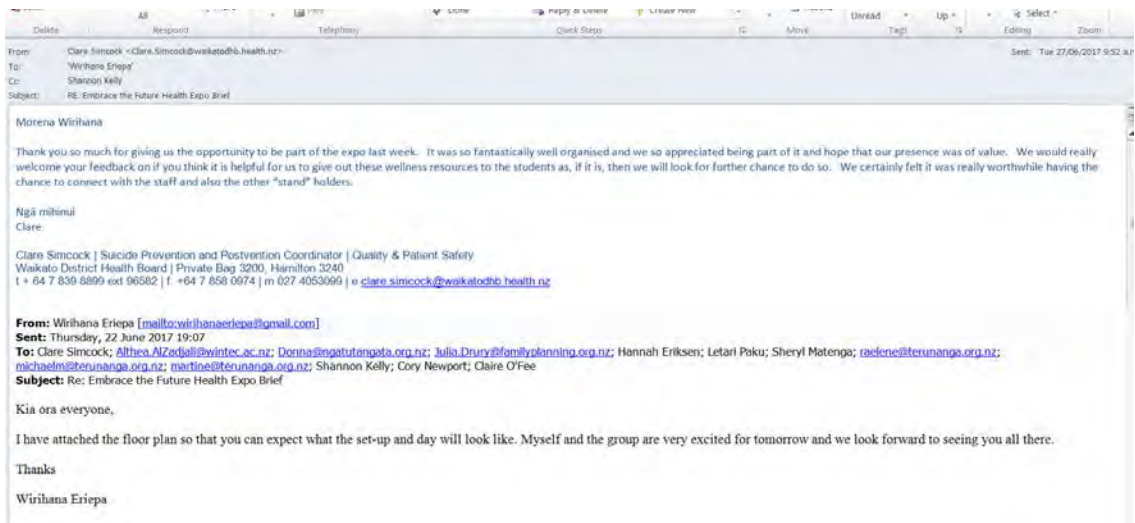
3 details of success:

- The Onewhero Youth Action group planned and coordinated every part of the project including the marketing, advertising and distribution of 50 trees;

- The reasoning for gifting trees was empowering; the Onewhero Youth Action group wanted young people in Onewhero to have access to fresh fruit in their community.
- The planning and promotion of the event was well received and the media picked up on their work (as advertised in online at <http://www.scoop.co.nz/stories/AK1705/S00662/waikato-district-youth-group-projects-celebrated.htm>)
- The team had a fantastic day and the event was a huge success with all 50 trees going to families in the Onewhero, Port Waikato, Tuakau areas. When the group started there was a line of people waiting to sign up and most of the trees were gifted before 9am in the morning.
- By gifting these trees, young people were able to contribute to food security and healthy eating options in the community.
- All of the youth action group were introduced to the workings of the Onewhero-Tuakau Community Board and now have a formal place as youth rep on the community board. They are invited on a monthly basis and receive a rewards voucher to attend the community board as the youth rep for their community.
- From this event, the youth group has identified another community need (the defunct BMX track) they would like to get involved in. The youth group is in talks with local organisers to determine what they would like to see at the BMX track and how to get involved.

### Project Two: Ngaruawahia Embrace the Future Youth Health Expo

- The group planned every item and worked in collaboration with youth health providers from in and around Ngaruawahia to support local youth in the town
- More than 280 young people from Ngaruawahia High School participated in the Youth Health Expo (80 x senior students, 120 x year 10's and 120 x year 9 students per period)
- Each student had a list of things they needed to find out from the stalls and would go in the draw to win a bunch of prizes – as a result of them filling out the each of the students learnt about the various services available to them in their community and got to engage with a range of people who could support them in their health and wellbeing. The group also got to give away over \$500 in prizes.
- More than 15 stall holders attended the Youth Health Expo. Community groups came together to support the youth group and feedback was positive. We received many emails about the event, and have attached one below.



- One of the leaders of the Ngaruawahia Youth Action Group has been participating as the Youth rep on the Ngaruawahia Community Board for the year. He has been a valuable contribution to the community board and is mentored by the local ward Councillor and the Chairman of the Community Board.

### **Programme 3: Te Kauwhata Wacky Hair Disco**

- Over 110 young people attended the TK Wacky Hair disco; of which more than 25 were youth volunteers. The event was designed for young people between 5-13 years of age.
- The event was planned and coordinated solely by the Te Kauwhata Youth Action Group, led by Te Kauwhata youth leader who is aged 16.
- The youth leader was on the radio to promote her event (Free FM) which led to her developing her confidence and public speaking skills
- The youth leader was then nominated as the youth rep for the Te Kauwhata community committee and regularly updates the community committee about the needs of the young people in the Te Kauwhata Community. She is strongly supported by the Chair and the Youth Mentor of the Community Committee.
- From her involvement in the Govern Up programme, the leader has put herself and the youth group forward to organise the local skate park opening which is coming up shortly, and has decided to go to tertiary education a year early to kick start her career and make a difference in her community.

### **Programme 4: CreativeCon event**

- The CreativeCon event was the first event that most of the Huntly youth action group had ever run before. The event was designed to have a dance battle, poetry slam, creative workshops, battle of the bands and a graffiti competition.
- It was the first time that young people had an opportunity to MC an event, and they did a wonderful job
- The promotion was well received on Facebook and Event Finder – members of the public attended and were supportive of the groups accomplishments.
- Young people came out of their communities and participated - one young person overcame her shyness to create a spoken word and speak it on the day.
- Most of the young people involved in this project came from a disadvantaged background with low socio-economic status. Of the 25 young people who organised the event, approximately 20 of them were from disadvantaged backgrounds.

### **Programme 5: Raglan basketball and BBQ Youth Comp**

- The Raglan youth group wanted to have resources that were accessible to the youth in Raglan. They highlighted that for many young people they were transient (i.e, they were always outdoors, at the beaches etc). They wanted to have a travelling BBQ that would allow them to set up and run activities anywhere in the Raglan area, and so purchased a movable Basketball hoop, balls, and a transportable BBQ.
- More than 40 young people were involved in the decision making process to purchase a BBQ and basketball gear for the community. We will send the video link to the MYD email address to accompany this.

### **Programme 6: The Tuakau Youth Action Group Great Tree Run**

- The Tree Run had involved a huge number of volunteers who have registered with the school.
- Free fruit trees were advertised by the youth action group and interested parties were invited to ring the school and leave their names and details. The youth group coordinated the addresses and the volunteers and arranged for the volunteers to pick up trees from the school and take them out and plant at the homes of the interested parties.

- The youth mentor and local ward councillor have been involved in mentoring and guiding the group in many aspects of project management and event management.
- The event was organised solely by the Youth Action Group, with support of adults and community groups.
- Teams such as the Tuakau Rugby 1<sup>st</sup> 15 were involved in the tree planting and distribution, as well as students from Tuakau College.
- Tree planting took place in both Tuakau and Pokeno.
- All of the young people involved in this project whakapapa back to Tuakau/ Pokeno area.

#### **Programme 7: Taupiri Youth Group Community Planting Day**

- The Taupiri Youth Group decided to hold a community planting day to improve the tracks that had fallen into disrepair on Taupiri Mountain
- Over 40 young people from low socio-economic backgrounds came together to plan and organise a huge community planting day on the mountain for their community. All of the young people come from the area and are passionate about the wellbeing of the mountain.
- More than 150 member's people from the community signed up to attend.
- The Taupiri Youth Group sought support from a range of people including private land owners, Waikato District Council, Waikato Tainui, community groups, Taupiri Community Board and local businesses
- The leader of the group, Sharnay Cocup, is the Waikato District Councils youngest elected community board member, and a national youth award winner.

#### **Programme 8: Tamahere Youth Council tree planting with Tamahere School**

- One insightful young person had collaborated with ex school friends from Tamahere to deliver a tree planting programme at their old school, Tamahere Primary School, and plant a whole lot of fruit trees along the border of the school.
- The intention behind the tree planting was to allow young people who had been members of the school to give back to the community that had looked after them as young people.
- The youth council works with the local ward councillor, ex councillors and other community leaders to make the right connections, select and purchase trees and plan, discuss and decide on appropriate planting areas in the community.

#### **Programme 9: Govern Up mentoring:**

- This programme allowed me to meet with young people across the district and empower them to create wonderful projects for the community.
- I was able to collaborate and become a co-operative component for young people to become leaders.
- Young people and local councillors and community board members across the district proactively developed meaningful safe relationships with young people in their towns and young people have developed positively from these interactions and support.
- As a result of these young people stepping up into leadership and mentoring roles, other adults in the community have seen the great work youth are doing and have stepped up to support the work they are trying to achieve.
- Leaders in Meremere and Tamahere now want to participate as a youth rep on the community board or committee for their town as well.
- These activities have helped enhance the logistical and organisational capabilities of young people involved in Govern Up.

- The project allowed local governing bodies (i.e. community boards and community committees) to develop more engaging and meaningful relationships with local youth action groups.
10. Please provide details of 2 things that you would like to improve on:
- Increasing the length of the programme from 6 months to a year.
  - Having more time to increase further collaboration between the local groups and other youth groups for extra support, networking and growth.
11. Please describe how the young people (or agencies) benefited from the services you were contracted to deliver and provide two examples of success stories (see guidance notes below):
- 50 families in the Onewhero community have fruit trees, and eventually free fruit for young people and families to eat.
  - 300 students in Ngaruawahia had a unique opportunity to develop networks and relationships with key youth health providers in their community.
  - 25 young people in Huntly had the opportunity to develop the first CreativeCon event, an event that will continue to be held with community support
  - Young people in Raglan now have the opportunity to use basketball and BBQ resources that are readily accessible for their active youth community
  - Three young people involved in Govern Up were selected for the Rewi Alley Scholarship and are travelling to China in July.
  - As a result of participating in the project one young person has decided to start tertiary education a year early and strive for her dreams to help her community.
  - Four of the youth leaders in separate Govern Up projects have been invited to sit on a range of governance committees, including a forum for the Waikato District Health Board, a local youth advisory panel, a community facilities advisory panel and a youth suicide advisory group.
  - Young people in the Govern Up project have now gone on to other leadership roles in other areas. Ngaruawahia, Huntly, Te Kauwhata, Tuakau and Onewhero all have a youth leader from Govern Up who is now on the Community Board or community Committee in their towns.
12. Please describe what trends, issues and/or impacts have been identified for the young people (or agencies) that influence the outcomes:
- Trends:**
- Project development, leadership development and mentoring opportunities were taken up by young people who were interested in developing themselves as leaders, but many were unable to participate from the beginning to the end of the project. For many students they started on the initial concepts and then were unable to come to other planning sessions. For many students, once the initial planning was done, other young people jumped on and participated where they could. We found it extremely important to allow young people to participate as they were able, rather than in a prescribed set format, which didn't work.
  - Many of our young people were impacted by many things, including time constraints due to school, work, family, or extra-curricular studies. Some of our students left school or the town, were expelled or had serious family issues that took precedence.
  - We found that young people worked better when highlighting the positive aspects of the work they had created rather than coming from a need to fix.
  - We found that making sure young people had food at the planning meetings allowed them to connect through food and networking, and was a regular incentive for young people to participate. This was highlighted as a benefit of coming to the planning sessions.

- Things that impacted projects were: school holidays, exams, school assignments, other leadership opportunities.
- Projects were influenced by the strength of the relationship that youth mentors and community board/ committee members were able to develop with the youth group and the young people. If a youth group had an unfamiliar relationship with a mentor or ward councillor, the project was powerfully influenced by this.
- From this project we could see that the stronger a relationship the young people had with their adult support structures, the better the project turned out. I.e in Te Kauwhata the Disco had over 100 young people attend, and the Chairperson and youth mentor were both heavily involved in supporting the youth leader in this project. We can directly correlate the amount of support given to each group with the number and level of attendance in youth.
- In most instances, concerns or problems were resolved by positive emphasis and encouragement. For example, at one stage, the Ngaruawahia Group wanted to pull out. By strongly encouraging them and telling them that they were doing a wonderful job and giving them a reality check of positive things that they had accomplished allowed them to get back on track and keep going. As a result over 300 young people attended and the event left a lasting impression on services and young people across the town.
- Adults changed their perceptions positively about young people in their towns, and young people became empowered as a result of running fantastic programmes.

**ATTACHMENT 3: Selection of photos and social media posts for the Govern Up Project in Onewhero and Tuakau**











#### ATTACHMENT 4: Onewhero Youth Action Group photos and Videos

([https://www.dropbox.com/sh/ocxdfsuquvvcpg5/AADE-0jBDhUdAybn\\_ONmsjbra?dl=0](https://www.dropbox.com/sh/ocxdfsuquvvcpg5/AADE-0jBDhUdAybn_ONmsjbra?dl=0))

---

**Open Meeting**

<b>To</b>	Onewhero-Tuakau Community Board
<b>From</b>	Tony Whittaker General Manager Strategy & Support
<b>Date</b>	24 July 2017
<b>Prepared by</b>	Julienne Calambuhay Management Accountant
<b>Chief Executive Approved</b>	Y
<b>Reference/Doc Set #</b>	GOV0514 / 1772022
<b>Report Title</b>	Discretionary Fund Report to 30 June 2017

**1. EXECUTIVE SUMMARY**

---

To update the Board on the Discretionary Fund Report to 30 June 2017.

**2. RECOMMENDATION**

---

**THAT the report from the General Manager Strategy & Support be received.**

**3. ATTACHMENTS**

---

Discretionary Fund Report to 30 June 2017

**ONEWHERE TUAKAU COMMUNITY BOARD DISCRETIONARY FUND 2016/2017**

	<b>GL</b>	<b>1.215.1704</b>
<b>2016/17 Annual Plan</b>		28,878.00
<b>2015/16 Carry forward</b>		30,656.00
<b>Total Funding</b>		<u><u>59,534.00</u></u>
<b>EXPENDITURE:</b>		
14-Jul-16 Tuakau Community Patrol - cost of upgrading community patrol vehicle		5,000.00
15-Jul-16 Glen Murray Community Equestrian Centre - upgrading the access track leading into the club's equestrian grounds		1,300.00
15-Aug-16 Te Kohanga School - towards maintenance of school pool for community use		410.52
31-Aug-16 Onewhero Area School - cost of purchasing a defibrillator		3,262.00
31-Aug-16 The Laundry of Tuakau - table cloth for ANZAC Day		60.00
01-Sep-16 Tuakau Kindergarten - cost of hosting the Tuakau community duck racing event		2,546.61
12-Sep-16 Port Waikato Resident and Ratepayers Association - cost of upgrading the security surveillance systems located at Port Waikato		5,000.00
16-Nov-16 Tuakau Lions Club - towards cost of Tuakau Community Christmas Parade		1,000.00
21-Nov-16 Sunset Beach Lifeguard Service Inc. - lifeguard programme over summer of 2016/2017		2,000.00
01-Nov-16 Opuatia Hall Committee - cost of painting the interior of the community hall facility		5,500.00
17-Nov-16 Pukekawa Boys & Girls Agricultural Club - upgrade of the project		2,875.00
30-Nov-16 Tuakau Supervalu - miscellaneous supplies		19.48
07-Feb-17 Nikau Café - room hire		43.48
17-Feb-17 Anzac Day 2017 commitments - FLAGZ Group Ltd - street banner		452.51
07-May-17 The Laundry of Tuakau - table cloth		60.00
30-May-17 NZCB Conference - Brinkley Resort - accommodation - Reeve		443.48
30-May-17 NZCB Conference - Brinkley Resort - meals - Reeve		73.91
30-May-17 NZCB Conference - airport transfer - Reeve		78.26
30-May-17 NZCB Conference - Air New Zealand flights - V Reeve		532.00
29-Jun-17 Anzac Day 2017 commitments - service costs - reimb to J Church		344.35
29-Jun-17 Anzac Day 2017 commitments - plant stand - reimb to L Petersen		16.96
<b>Total Expenditure</b>		<u><u>31,018.56</u></u>
<b>Total Income</b>		-
<b>Net Expenditure</b>		31,018.56
<b>Net Funding (Excluding commitments)</b>		<u><u>28,515.44</u></u>
<b>COMMITMENTS:</b>		
01-Jul-15 Allocated amount to the Chair to purchase misc. items (balance from 30/6/2015)	301.81	
Less : Expenses	<u>19.48</u>	282.33
01-Sep-14 Contribution towards placemaking project (OTCB1409/06/2)		6,000.00
05-Dec-16 Anzac Day 2017 commitments (OTCB1612/06)	1,500.00	
Less : Expenses	<u>873.82</u>	626.18
05-Dec-16 Port Waikato Community Hall - hall hire (OTCB1612/04)		135.00
06-Mar-17 Port Waikato Yacht & Motor Boat Club - 6 new life jackets (OTCB1703/07)		614.00
<b>TOTAL COMMITMENTS</b>		<u><u>7,657.51</u></u>
<b>NET FUNDING REMAINING (Including commitments) as of 30 June 2017</b>		<u><u>20,857.93</u></u>

### **Open Meeting**

<b>To</b>	Onewhero–Tuakau Community Board
<b>From</b>	Tony Whittaker General Manager Strategy & Support
<b>Date</b>	17 July 2017
<b>Prepared by</b>	Lianne van den Bemd Community Development Advisor
<b>Chief Executive Approved</b>	Y
<b>DWS Document Set #</b>	CDR0502 / 1763350
<b>Report Title</b>	Application for Funding – Glen Murray Community Equestrian Centre

## **1. EXECUTIVE SUMMARY**

---

The purpose of this report is to present an application for funding from the Glen Murray Community Equestrian Centre towards the cost of purchasing a new defibrillator.

## **2. RECOMMENDATION**

---

**THAT** the report from the **General Manager Strategy & Support** be received;

**AND THAT** an allocation of \$..... is made to the **Glen Murray Community Equestrian Centre** towards the cost of purchasing a new defibrillator;

**OR**

**AND THAT** the request from the **Glen Murray Community Equestrian Centre** towards the cost of purchasing a new defibrillator is declined / deferred until ..... for the following reasons:

## **3. BACKGROUND**

---

The Glen Murray Community Equestrian Centre wants to purchase a new defibrillator for community use.

The defibrillator would be available for use to the following groups, and any others who may require the defibrillator:

- Glen Murray Community Equestrian Centre – group days / rides and clinics

- Glen Murray Hall – family gatherings, meetings, funerals, training workshops
- Glen Murray Tennis Club – weekly club nights, inter club events and tournaments
- The Glen Murray Mr Motorcycles annual motorbike district fundraiser committee

The above gatherings can attract between 40 – 300 visitors at each given time.

Statistics advocate that early use of defibrillation can increase the chance of survival from 8% up to 40% in sudden cardiac arrest cases.

The defibrillator is an Automated External Defibrillator (“AED”) – Powerheat G5 AED.

#### 4. OPTIONS CONSIDERED

---

- 1) That the application is approved and an allocation of partial or full funding requested be made.
- 2) That the application is declined.
- 3) That the application is deferred.

#### 5. FINANCIAL

---

Funding is available to allocate for the year.

The project is noted to cost \$3,731.75. The Glen Murray Community Equestrian Centre is seeking funding of \$3,731.75 towards the cost of purchasing a new defibrillator.

GST Registered			No
Set of Accounts supplied			Yes
Previous funding has been received by this organisation			Yes
Onewhero–Tuakau Community Board	Upgrading the driveway access track	October 2015	<b>\$1,300.00</b>

#### 6. POLICY

---

The application meets the criteria set in the Discretionary Grants Policy, one of which is that grants up to \$5,000.00 can be funded up to 100% at the discretion of the relevant community board or committee or Council’s Discretionary & Funding Committee.

For grants above \$5,000.00 a funding cap of 75% of the total project cost applies (whichever is the greater) and other funding needs to be sought.

Funds cannot be uplifted until all sufficient funds for the project are approved.

## **7. CONCLUSION**

---

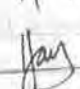
Consideration by the Board is required with regard to this funding request.

## **8. ATTACHMENTS**

---

Application for Funding - Glen Murray Community Equestrian Centre



4/7  




## DISCRETIONARY FUNDING APPLICATION FORM

### Important notes for applicant:

- It is recommended that, prior to submitting your application, you contact the Waikato District Council's community development co-ordinator, on 07 824 8633 or 0800 492 452, to discuss your application requirements and confirm that your application meets the eligibility criteria.
- Please read the Guidelines for Funding Applications document to assist you with completing this application form.
- All applications must be on this application for funding form. We will not accept application forms that have been altered.
- Please note that incomplete applications WILL NOT be considered. All parts of the application MUST be completed and all supporting information supplied.
- The checklist on page 5 needs to be completed.

Which fund are you applying to: (Please tick appropriate box)

Discretionary and Funding Committee

Project

Event

OR

Community Board / Committee Discretionary Fund

Raglan

Taupiri

Onewhero-Tuakau

Ngaruawahia

Huntly

Te Kauwhata

Meremere

### Section I – Your details

Name of organisation

Glen Murray Community Equestrian Centre

What is your organisation's purpose?

Mission Statement

- To offer a safe and friendly environment in all disciplines of riding
- To Educate and encourage
- To Grow and develop

Address: (Postal)

c/o GM Equestrian Secretary Flee Coker-Grey  
 1578 Glen Murray Road  
 Glen Murray, R.D. 5, Tuakau 2695

Address: (Physical if different from above)

Glen Murray Equestrian Centre (next to GM Hall Grounds)  
 Highway 22, Glen Murray

Contact name, phone number/s and email address

Flee Coker-Grey 021 1821835

Charities Commission Number: (If you have one)

Are you GST registered? No  Yes  GST Number \_\_\_/\_\_\_/\_\_\_

Bank account details 3 8 / 9 0 0 6 / 0 1 3 7 3 6 7 / 0 0 0

Bank Kiwi Bank Branch Tuakau

The following documentation is required in support of your application:

- A copy of the last reviewed or audited accounts (whichever applies) for your organisation/group/club
- Encoded deposit slip to enable direct credit of any grant payment made
- A copy of any documentation verifying your organisations legal status

### Section 2 – Community wellbeing and outcomes

Which community wellbeing will your project contribute to?

(See the guidelines sheet for more information on this section).

Social  Economic  Cultural  Environmental

Which of the five community outcomes for the Waikato district does this project contribute to?

(See the guidelines sheet for more information on this section.)

Accessible  Safe  Sustainable  Healthy  Vibrant

### Section 3 – Your event/project

<p><b>What is your event / project, including date and location ? (please provide full details)</b></p> <p>Purchase of a Defibrillator for Glen Murray Community Equestrian Centre / Glen Murray Hall Association</p>
<p><b>Who is involved in your event / project?</b></p> <p>GM Community Equestrian Centre Committee and Glen Murray Hall Association</p>
<p><b>How many volunteers are involved?</b></p> <p>n/a</p>
<p><b>What other groups are involved in the project?</b></p> <p>N/A</p>
<p><b>How will the wider community benefit from this event/project?</b></p> <p>A centrally located defibrillator, would provide the broader Glen Murray community access to this potentially lifesaving resource in an emergency. It would specifically provide this resource to the following groups within Glen Murray that meet at this location.</p> <ul style="list-style-type: none"> <li>- GM Tennis Club - attended in peak months by approx 40+ members</li> <li>- GM Community Equestrian Centre - various group events / rides and clinics attended by members and visitors through out the ride season (upto 40 - 50 riders on annual trek ride based from Hall HQ)</li> <li>- GM Community Hall - Multiple Events held throughout the year i.e Training groups, meetings, parties, funerals (these events specially parties and funerals can often reach approx 300 people)</li> </ul>

#### Section 4 – Funding requirements

**Note :** Please provide full details of how much your event/project will cost, how much you are seeking from the Waikato District Council and other providers, details of other funding and donated materials/resources being sourced, and current funds in hand to cover the costs of the event/project.

Please complete all of the following sections	<b>GST Inclusive Costs</b> (use this column if you are not GST registered)	<b>GST Exclusive Costs</b> (use this column if you are GST registered)
<b>TOTAL COST OF THE PROJECT/EVENT</b>	\$ 3,731.75	\$
Existing funds available for the project <b>Total A</b> Include any projected income i.e. ticket sales, merchandise etc.	\$	\$

#### Funding being sought from Waikato District Council

<b>Project Breakdown</b> (itemised costs of funding being sought) If there is insufficient space below please provide a breakdown of costs on an additional sheet.	\$	\$
First Aid Debibrillator Automated external Defibrillator (AED)	\$ 3,731.75	\$
Powerheart G5 AED \$3,295 excl gst	\$	\$
	\$	\$
	\$	\$
	\$	\$
	\$	\$
<b>Total Funds being sought from WDC Total B</b>	\$	\$

Has funding been sought from other funders? Yes  No   
If 'Yes', please list the funding organisation(s) and the amount of funding sought

a)	\$ _____	\$ _____
b)	\$ _____	\$ _____
c)	\$ _____	\$ _____
d)	\$ _____	\$ _____
<b>Total of other funds being sought Total C</b>	\$ _____	\$ _____

<b>Total Funding Applied for</b> (Add totals A, B, and C together to make Total D) <b>Total D</b> <i>Note : This total should equal the Total Cost of the Project/Event</i>	\$ 3,731.75	\$
---	-------------	----

**Describe any donated material / resources provided for the event/project:**

GM Equest Club will provide a box and position in consultation with Hall Assoc

**Section 5 – Previous Funding Received from Waikato District Council**

If you have received funding from or through the Waikato District Council for any project/event in the past two years, please list below:

What Board/ Committee	Type of Project/Event	Date recieved	Amount

Please confirm that a 'Funding Project Accountability' form has been completed and returned to Waikato District Council for the funds listed above. Note : this will be checked and confirmed by council staff.

I confirm that an accountability statement has been completed and returned

Signed: \_\_\_\_\_ Name: \_\_\_\_\_

I certify that the funding information provided in this application is correct.

Signature: Flee Coker-Grey \_\_\_\_\_ Date: 23 June 2017 \_\_\_\_\_

Position in organisation (tick which applies) Chairman  Secretary  Treasurer

Signature: Caroline Conroy \_\_\_\_\_ Date: \_\_\_\_\_

Position in organisation (tick which applies) Chairman  Secretary  Treasurer

**Describe any donated material / resources provided for the event/project:**

GM Equest Club will provide a box and position in consultation with Hall Assoc

**Section 5 – Previous Funding Received from Waikato District Council**

If you have received funding from or through the Waikato District Council for any project/event in the past two years, please list below:

What Board/ Committee	Type of Project/Event	Date received	Amount

Please confirm that a 'Funding Project Accountability' form has been completed and returned to Waikato District Council for the funds listed above. **Note** : this will be checked and confirmed by council staff.

I confirm that an accountability statement has been completed and returned

Signed: \_\_\_\_\_ Name: \_\_\_\_\_

I certify that the funding information provided in this application is correct.

Signature: Flee Coker-Grey  Date: 23 June 2017

Position in organisation (tick which applies) Chairman  Secretary  Treasurer

Signature: Caroline Conroy  Date: 25 June 2017

Position in organisation (tick which applies) Chairman  Secretary  Treasurer

## Checklist

Please ensure you have completed all parts of the funding application form by marking the boxes below and include copies of all accompanying documentation required.

Please also ensure you attach the completed checklist with your application.

Items Required	Enclosed ✓
Read and understood the guidelines for funding applications document	
Discussed your application with the Waikato District Council community development co-ordinator	
Nominated the fund you are applying for	
Completed Section 1 – Your details	
Enclosed a full copy of the last reviewed or audited accounts (whichever applies) for your organisation/group/club	
Enclosed an encoded deposit slip to enable direct credit of any grant payment made	
Enclosed a copy of any documentation verifying your organisations legal status	
Completed Section 2 - community wellbeing and outcomes	
Completed Section 3 – details of your event/project	
Completed Section 4 – Funding requirements – <b>Budget and quotes need to match. Include copies of written quotes.</b>	
Completed Section 5 where funding has been received in the previous 2 years	
Obtained two signatures on your application	

**Please note:** Incomplete applications will not be considered. Applicants will be requested to submit relevant outstanding information within 5 days or their application will be returned.

**Glen Murray Community Equestrian Centre Inc Society**  
**Statement of Position As at 27 March 2017**

	27 Mar 2017	31 Mar 2016	31 Mar 2015
<b>Assets</b>			
<b>Bank</b>			
Cheque Account (00)	4,551	1,823	5,345
Fundraising Account (01)	3,548	3,545	3,126
<b>Total Bank</b>	<b>8,099</b>	<b>5,368</b>	<b>8,470</b>
<b>Current Assets</b>			
Debtors	0	0	0
<b>Total Current Assets</b>	<b>0</b>	<b>0</b>	<b>0</b>
<b>Fixed Assets</b>			
Equestrian Equipment	11,399	11,399	8,020
Less Acc. Depn on Equestria	(4,089)	(3,064)	(2,629)
Sports Field Upgrade	34,496	34,496	34,496
<b>Total Fixed Assets</b>	<b>41,805</b>	<b>42,831</b>	<b>39,887</b>
<b>Total Assets</b>	<b>49,904</b>	<b>48,199</b>	<b>48,357</b>
<b>Liabilities</b>			
<b>Current Liabilities</b>			
Glen Murray Community Ir	5,000	5,000	5,000
<b>Total Current Liabilities</b>	<b>5,000</b>	<b>5,000</b>	<b>5,000</b>
<b>Total Liabilities</b>	<b>5,000</b>	<b>5,000</b>	<b>5,000</b>
<b>Net Assets</b>	<b>44,904</b>	<b>43,199</b>	<b>43,357</b>
<b>Accumulated Funds</b>			
Opening Accumulated Funds	43,199	43,357	43,048
Current Year Earnings	1,705	(158)	310
<b>Total Equity</b>	<b>44,904</b>	<b>43,199</b>	<b>43,357</b>

RED CROSS First Aid facilitator Donna Evans gives a demonstration using

AED Powerheart G5 at Glen Murray Hall 18 May 2017







NEW ZEALAND  
**RED CROSS**

13<sup>th</sup> May 2017

Glen Murray Equestrian  
Glen Murray

Attn: Flee Coker- Grey

Dear Flee

**RE: Automated External Defibrillator**

As requested this is an official quote for an AED

Powerheart G5 AED \$3731.75 gst inclusive

Please find also our information sheet on the support for the unit and how to access the free training

If you require any additional information please don't hesitate to contact me

With thanks

Donna Evans  
Training Coordinator

[Donna.evans@redcross.org.nz](mailto:Donna.evans@redcross.org.nz)

0275685700

### **Open Meeting**

<b>To</b>	Onewhero–Tuakau Community Board
<b>From</b>	Tony Whittaker General Manager Strategy & Support
<b>Date</b>	17 July 2017
<b>Prepared by</b>	Lianne van den Bemd Community Development Advisor
<b>Chief Executive Approved</b>	Y
<b>DWS Document Set #</b>	CDR0502 / 1763349
<b>Report Title</b>	Application for Funding – Tuakau Youth Sport Trust

## **I. EXECUTIVE SUMMARY**

---

The purpose of this report is to present an application for funding from the Tuakau Youth Sport Trust (“the Trust”) towards the cost of the design /consultation fees to build a new skate Park in Tuakau.

## **2. RECOMMENDATION**

---

**THAT** the report from the **General Manager Strategy & Support** be received;

**AND THAT** an allocation of \$..... is made to the **Tuakau Youth Sport Trust** towards the cost of the design /consultation fees to build a new skate Park in Tuakau.

**OR**

**AND THAT** the request from the **Tuakau Youth Sport Trust** towards the cost of the design /consultation fees to build a new skate Park in Tuakau is declined / deferred until ..... for the following reasons:

## **3. BACKGROUND**

---

The Tuakau Community wants to develop a new skatepark situated in the Dr John Lightbody Reserve in Tuakau.

The Trust has been established to assist in the funding and installation of the facility.

The Trust has consulted with youth through the Tuakau Youth Centre and also through the Facebook Page Skatepark in Tuakau and have immense support for the project.

The following community groups have provided support and feedback:

Tuakau Soccer Club, Waikato District, Tuakau Police and the Tuakau Lions

- Tuakau is a relatively low decile area it is essential that youth have access to low cost sport.
- Not all children can afford to pay Club fees or have the means to be taken to Districtwide sport each week.
- It will also enable Youth services to have a location to engage with Youth for positive outcomes.

The project will be completed in a minimum of two stages:

- Stage one – design /consultation \$25,700+GST
- Stage two – construction \$300,000+GST.

The Trust has had discussion with the Department of Internal Affairs and anticipates them being a major funder.

**Staff Comments:**

Below is an extract from the Waikato District Council Sports Park Reserve Management Plan for Dr John Lightbody Reserve:

Permit expansion of the existing stake park facilities as demands and resources permit.

The placing of the skate park needs to be in a high visible area in line with the crime prevention through environmental design principles (“CEPTED”). Work with Waikato District Council parks staff as to the placement and finish for ease of parks operations/maintenance on completion.

The Playground Strategy (review 2017) has a proposed budget of \$350,000 for a skatepark in 19/20 year, which will be going to the community boards and committees for comment and then through the Long Term Plan process.

#### **4. OPTIONS CONSIDERED**

---

- 1) That the application is approved and an allocation of partial or full funding requested be made.
- 2) That the application is declined.
- 3) That the application is deferred.

#### **5. FINANCIAL**

---

Funding is available to allocate for the year.

The project is noted to cost \$25,700.00. The Tuakau Youth Sport Trust is seeking funding of \$25,700.00 towards the cost of the design /consultation fees for stage one of the project.

The Trust will apply to the Waikato District Community Wellbeing Trust to meet any shortfall cost.

GST Registered	Yes
Set of Accounts supplied	NA
Previous funding has been received by this organisation	No

The application meets the criteria set in the Discretionary Grants Policy, one of which is that grants up to \$5,000.00 can be funded up to 100% at the discretion of the relevant community board or committee or Council's Discretionary & Funding Committee.

For grants above \$5,000.00 a funding cap of 75% of the total project cost applies (whichever is the greater) and other funding needs to be sought.

Funds cannot be uplifted until all sufficient funds for the project are approved.

## **6. CONCLUSION**

---

Consideration by the Board is required with regard to this funding request.

## **7. ATTACHMENTS**

---

Application for Funding - Tuakau Youth Sport Trust



37

RECEIVED

07 JUL 2017



Waikato District Council

# DISCRETIONARY FUNDING APPLICATION FORM

### Important notes for applicant:

- It is recommended that, prior to submitting your application, you contact the Waikato District Council's community development co-ordinator, on 07 824 8633 or 0800 492 452, to discuss your application requirements and confirm that your application meets the eligibility criteria.
- Please read the Guidelines for Funding Applications document to assist you with completing this application form.
- All applications must be on this application for funding form. We will not accept application forms that have been altered.
- Please note that incomplete applications WILL NOT be considered. All parts of the application MUST be completed and all supporting information supplied.
- The checklist on page 5 needs to be completed.

Which fund are you applying to: (Please tick appropriate box)

Discretionary and Funding Committee



Project



Event

OR

Community Board / Committee Discretionary Fund

Raglan



Taupiri



Onewhero-Tuakau



Ngaruawahia



Huntly



Te Kauwhata



Meremere



### Section I – Your details

Name of organisation

Tuakau Youth Sport Trust

What is your organisation's purpose?

Tuakau Youth Sport Trust has been established to provide safe and secure environments for the youth of the district to be able to engage in positive sport providing physical and mental challenges

Address: (Postal)

PO Box 856 Pukekohe

Address: (Physical if different from above)

Contact name, phone number/s and email address

Shaun Jackson 021733059 shaun@jppgroup.co.nz  
Ani Taua 0211262378 tute-taua05@hotmail.com  
Aimee Pivott 021639866 pivott@businessplusone.co.nz

Charities Commission Number: (If you have one) CC53399

Are you GST registered? No  Yes  GST Number 1914441845

**Note: At the time of making this application we are not GST registered, but it is our intention to complete the registration process, we just need to have this signed off at Trustee level before completing the application with Inland Revenue**

Bank account details Bank ANZ 060469 0101570 00

The following documentation is required in support of your application:

- A copy of the last reviewed or audited accounts (whichever applies) for your organisation/group/club
- Encoded deposit slip to enable direct credit of any grant payment made
- A copy of any documentation verifying your organisations legal status

### **Section 2 – Community wellbeing and outcomes**

**Which community wellbeing will your project contribute to?**

(See the guidelines sheet for more information on this section.)

Social  Economic  Cultural  Environmental

**Which of the five community outcomes for the Waikato district does this project contribute to?**

(See the guidelines sheet for more information on this section.)

Accessible  Safe  Sustainable  Healthy  Vibrant

### **Section 3 – Your event/project**

**What is your event / project, including date and location ? (please provide full details)**

To obtain professional design and consultation for the establishment of a Skate/Scooter park in Dr John Lightbody reserve

**Who is involved in your event / project?**

Outside of the TYST we have worked with the Tuakau Youth Centre, Tuakau Combined Sports trust, Tuakau Soccer club and Waikato district Council and Rich landscapes. We consulted with several other Skatepark Design/Build Companies but settled with Rich Landscapes due to their professionalism

**How many volunteers are involved?**

Three

**What other groups are involved in the project?**

Tuakau Youth Centre, Tuakau Combined Sports trust, Tuakau Soccer club

**How will the wider community benefit from this event/project?**

The positive effects of having a youth facility like this will be far reaching. It will not only provide a great physical activity for the people of the district but will also provide a great opportunity for social services to be able to provide programmes and support for the youth of the district. We also believe there are economic benefits for having additional facilities in town. When people look to relocate to a town they look to see what is on offer and this will add to that.

### Section 4 – Funding requirements

**Note :** Please provide full details of how much your event/project will cost, how much you are seeking from the Waikato District Council and other providers, details of other funding and donated materials/resources being sourced, and current funds in hand to cover the costs of the event/project.

Please complete all of the following sections	<b>GST Inclusive Costs</b> (use this column if you are not GST registered)	<b>GST Exclusive Costs</b> (use this column if you are GST registered)
<b>TOTAL COST OF THE PROJECT/EVENT</b>		<b>\$ 25,700</b>
Existing funds available for the project <b>Total A</b> Include any projected income i.e. ticket sales, merchandise etc.	<b>\$1000</b>	<b>\$</b>

#### Funding being sought from Waikato District Council

<b>Project Breakdown</b> (itemised costs of funding being sought) If there is insufficient space below please provide a breakdown of costs on an additional sheet.	<b>\$</b>	
<b>Conceptualisation Phase</b>	<b>\$</b>	<b>\$ 5400</b>
<b>Developed design phase</b>	<b>\$</b>	<b>\$3600</b>
<b>Detail Design Phase</b>	<b>\$</b>	<b>\$12200</b>
<b>Project Observation phase</b>	<b>\$</b>	<b>\$4500</b>
	<b>\$</b>	<b>\$</b>
	<b>\$</b>	<b>\$</b>
<b>Total Funds being sought from WDC</b> <b>Total B</b>	<b>\$</b>	<b>\$ 25700</b>

Has funding been sought from other funders? Yes  No   
If 'Yes', please list the funding organisation(s) and the amount of funding sought

a)	\$ _____	\$ _____
b)	\$ _____	\$ _____
c)	\$ _____	\$ _____
d)	\$ _____	\$ _____
<b>Total of other funds being sought</b> <b>Total C</b>	<b>\$ _____</b>	<b>\$ _____</b>

<b>Total Funding Applied for</b> (Add totals A, B, and C together to make Total D) <b>Total D</b>	<b>\$</b>	<b>\$25,700</b>
<b>Note :</b> This total should equal the Total Cost of the Project/Event		



Describe any donated material / resources provided for the event/project:


**Section 5 – Previous Funding Received from Waikato District Council**

If you have received funding from or through the Waikato District Council for any project/event in the past two years, please list below:

What Board/ Committee	Type of Project/Event	Date received	Amount
NIL			

Please confirm that a 'Funding Project Accountability' form has been completed and returned to Waikato District Council for the funds listed above. Note : this will be checked and confirmed by council staff.

I confirm that an accountability statement has been completed and returned

Signed:  Name: Shaun Jackson

I certify that the funding information provided in this application is correct.

Signature:  Date: 05/07/17

Position in organisation (tick which applies) Chairman  Secretary  Treasurer

Signature:  Date: 6/7/17

Position in organisation (tick which applies) Chairman  Secretary  Treasurer

## Checklist

Please ensure you have completed all parts of the funding application form by marking the boxes below and include copies of all accompanying documentation required.

Please also ensure you attach the completed checklist with your application.

Items Required	Enclosed ✓
Read and understood the guidelines for funding applications document	
Discussed your application with the Waikato District Council community development co-ordinator	
Nominated the fund you are applying for	
Completed Section 1 – Your details	
Enclosed a full copy of the last reviewed or audited accounts (whichever applies) for your organisation/group/club	
Enclosed an encoded deposit slip to enable direct credit of any grant payment made	
Enclosed a copy of any documentation verifying your organisations legal status	
Completed Section 2 - community wellbeing and outcomes	
Completed Section 3 – details of your event/project	
Completed Section 4 – Funding requirements – <b>Budget and quotes need to match. Include copies of written quotes.</b>	
Completed Section 5 where funding has been received in the previous 2 years	
Obtained two signatures on your application	

**Please note: Incomplete applications will not be considered. Applicants will be requested to submit relevant outstanding information within 5 days or their application will be returned.**



## Statement of Accounts

Your accounts at a glance as at 16 June 2017

TUAKAU YOUTH SPORT TRUST  
PO BOX 856  
PUKEKOHE 2340

0405

## Account information

Account type	Non Profit Organisation Current Account	Account number	06-0469-0101570-00
Statement number	00007	Opening balance	0.00
Statement period	16 Apr 2017 - 16 Jun 2017	Closing balance	1,000.00

000000-0000-0000-000000000000



anz.co.nz



0800 18 18 18



Pukekohe, PO Box 1393, Wellington

019002016

0011593 04/14

Date

\$

For credit of

Teller

Lodged in accordance with the conditions on deposit slip



ANZ Bank New Zealand Limited

Pukekohe Branch  
80 King Street, Pukekohe

Teller's initials and stamp

Proceeds of cheques unavailable until cleared. ANZ does not receive deposits marked for specific application. ANZ is not responsible for delays in processing this deposit.

For credit of

Paid in by (first and last name)

TUAKAU YOUTH SPORT TRUST

Date  
Notes  
Coins  
Sub Total Cash  
Cheques as per reverse

\$

### Deposit

⑈060469⑈ 0101570⑈00 ⑈ 50



## Charity Summary

**Registration Number:** CC53399  
**Registration Date:** 27/04/2016  
**Charity Name:** Tuakau Youth Sport Trust

## Charity Details

Trading Name

### Registration Details

**Registration Status:** Registered  
**Balance Date:** June 30  
**IRD Number:** Restricted

### Address for Service:

**Charity's Postal Address:** PO Box 856  
 Pukekohe 2340

**Charity's Street Address:** 139 Dominion Road  
 Tuakau 2121  
 Tuakau 2121

### Charity's other details

**Phone:** 021 733 059  
**Fax:**  
**Email:** shaun@jpgroup.co.nz  
**Website:**  
**Facebook:**  
**Twitter:**  
**Social Network Name:**

## Areas of Operation

**New Zealand:** Waikato  
**Percentage spent overseas** 0

## Purpose & Structure

---

### Purpose Purpose

Tuakau Youth Sport Trust has been established to provide safe and secure environments for the youth of the district to be able to engage in positive sport providing physical and mental challenges. Initially we are looking to establish a Skate Park

### Entity Structure

Trust

### Activities

Main Activity: Provides buildings / facilities / open space

Activities: Provides buildings / facilities / open space

### Sectors

Main Sector: Sport / recreation

Sectors: Community development, Sport / recreation

### Beneficiaries

Main Beneficiary: Children / young people

Beneficiaries: Children / young people

## Annual Returns

---

Date Submitted	For Year Ended	Total Income	Total Expenditure	Reference
	30/06/2017			
25/11/2016	30/06/2016			AR001

## Officer Details

---

### Current Officers

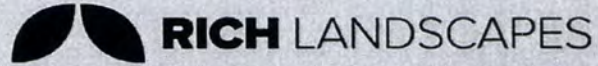
Name	Officer Type	Position
Aimee Pivott	Individual	Officer
Ani Taua	Individual	Trustee
Shaun Jackson	Individual	Trustee

## Rich Landscapes Fee Structure

## Design and Detail Drawings

Project : Tuakau Skatepark development

Date: 30/06/16



Item	Phase Description	Amount	% Claims to Date	% Claims for Current Invoice	Amount Invoiced	Comments
<b>1 Conceptualisation Phase</b>						
1.1	Conduct workshop with local user group, council and other stakeholders to generate design brief for the facility.  Conceptualise a 3D Model Proposal for overall design with a \$300,000 build budget. Present skatepark plan and image document for review.  Liaison with the local user group, council and other stakeholders and receive initial feedback from proposal concept for development of the design.	\$ 5,400.00			\$ -	1x Workshop Meeting
<b>Sub Total Phase 1</b>		\$ 5,400.00			\$ -	
<b>2 Developed Design Phase</b>						
2.1	Develop overall concept design and revise skatepark plan and image document for final review. Prepare Prelim Cost Estimate and Schedule  Engage with the local user group, council and other stakeholders through use of Plan, 3D image design document and VR environment. Accumulate feedback to finalise design and proceed with detail documentation.	\$ 3,600.00			\$ -	1x Workshop Meeting
		\$ 3,600.00			\$ -	
<b>3 Detail Design Phase</b>						
3.1	Develop necessary construction documentation for Building Consent Application and Construction of Elements. Provide to council for review during process as deemed appropriate.  Finalise Schedule of Quantities and Detailed Cost Estimate	\$ 9,000.00			\$ -	
3.2	Engage Structural Engineering Consultant to review drawings and deliver signed drawings, PS1, CDW and Calculations for commencement of construction	\$ 3,200.00			\$ -	Provisional Sum
		\$ 12,200.00			\$ -	
<b>4 Project Observation Phase</b>						
4.1	Project Monitoring: Be the primary point of contact for contractor and client regarding construction issues and reporting on progress of skatepark development. Contractor to supply photos of project for comment as requested.	\$ 2,100.00			\$ -	
4.2	Conduct Pre commencement, 2x intermediate and final site observations during construction phase and provide any relevant quality information to the client.	\$ 2,400.00			\$ -	Number of site inspections allowed for = 4
		\$ 4,500.00			\$ -	
<b>GRAND TOTAL</b>		\$ 25,700.00	(EXCLUD GST)	(EXCLUD GST)	\$ -	



30/6/16

**Shaun Jackson**  
Jackson Property Group  
PO Box 856  
Pukekohe

To Shaun,

**RE: PROPOSAL FOR DESIGN SERVICES – TUAKAU SKATEPARK, AUCKLAND**

Thank you very much for approaching RICH Landscapes to submit a fee proposal for the Tuakau Skatepark Development. This skatepark is unique and I look forward to creating a design that meets the needs of the users for years to come.

**SCOPE**

From meeting and correspondence with you a skatepark that maximises play and skate value is essential. A budget of \$300,000 has been provisioned for the construction of a diverse environment to cater for a variety of users. A few areas will be addressed in this skate proposal as listed below:

- The facility must cater for all users and skill levels
- Develop a diverse range of elements with unique features
- Connect with the existing amenities at the park in an appropriate manor
- Connection with the sense of place
- Use of alternative materials beyond concrete and steel

**PROGRAMME**

The development of the conceptual design will follow a general skatepark development programme. Outlined below are the steps to be taken:



### 1. Conceptualisation Phase

Conduct workshop with local user group, council and other stakeholders to generate design brief for the facility.

Conceptualise a 3D Model Proposal for overall design with a \$300,000 build budget. Present skatepark plan and image document for review.

Liaison with the local user group, council and other stakeholders and receive initial feedback from proposal concept for development of the design.

### 2. Developed Design Phase

Develop overall concept design and revise skatepark plan and image document for final review. Prepare Prelim Cost Estimate and Schedule.

Engage with the local user group, council and other stakeholders through use of Plan, 3D image design document and VR environment. Accumulate feedback to finalise design and proceed with detail documentation.

### 3. Detail Design Phase

Develop necessary construction documentation for Building Consent Application and Construction of Elements. Provide to council for review during process as deemed appropriate.

Finalise Schedule of Quantities and Detailed Cost Estimate

Engage Structural Engineering Consultant to review drawings and deliver signed drawings, PS1, CDW and Calculations for commencement of construction.

### 4. Project Observation Phase

Project Monitoring: Be the primary point of contact for contractor and client regarding construction issues and reporting on progress of skatepark development. Contractor to supply photos of project for comment as requested.

Conduct Pre commencement, 2x intermediate and final site observations during construction phase and provide any relevant quality information to the client.

### FEE

The price is \$25,700.00 and is subject to the additional fee notes below.

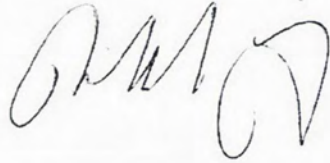
### ADDITIONAL FEE NOTES

- A provisional sum has been indicated for structural engineers input if required.
- Design process allows for 2 workshop meetings and 2 phases of feedback. Additional consultation phases and deviations from the developed design brief will incur variations at our hourly rates shown below.

- The number of site visits are shown in the fee structure. Additional site visits outside of what is proposed will be a variation.
- Printing of documents has not been including. Printing costs to be discussed if needed.
- Field testing (Geotechnical Report) in the vicinity of any proposed features needs to be conducted to determine stability of land. This has not been included for in this fee proposal.
- Fees are based on the assumption that we would be provided with electronic base information (CAD survey .dwg, .dxf or other file compatible with Trimble Sketchup) from which to develop the design concept to detail designs. The survey should be supplied first to reduce any discrepancies in the design development. If the survey is received after the start of the concept design stage variations at an hourly rate will apply to merge the design with the CAD survey file.
- Fee does not include application and process for Resource/ Building Consent if required.
- Additional work beyond this scope including meetings required to progress the project will be discussed and agreed. Hourly rates as follows:
  - Landscape Architect/ Skatepark Specialist \$ 120/hr
  - Draughtsman \$80/hr
- Invoices based on progress will be provided at the start of each month with payment required on the 20<sup>th</sup> of that month.
- All fees are exclusive of GST.

We appreciate the opportunity of being involved with this project and I thank you again for considering using our services. I look forward to hearing your reply.

Kind Regards

A handwritten signature in black ink, appearing to read 'R. Smith', written in a cursive style.

**Richard Smith**

Director  
BLA

WEB [www.richlandscapes.co.nz](http://www.richlandscapes.co.nz)  
EMAIL [rich@richlandscapes.co.nz](mailto:rich@richlandscapes.co.nz)  
MOB (021) 101 4988

## Checklist

Please ensure you have completed all parts of the funding application form by marking the boxes below and include copies of all accompanying documentation required.

Please also ensure you attach the completed checklist with your application.

Items Required	Enclosed ✓
Read and understood the guidelines for funding applications document	
Discussed your application with the Waikato District Council community development co-ordinator	
Nominated the fund you are applying for	
Completed Section 1 – Your details	
Enclosed a full copy of the last reviewed or audited accounts (whichever applies) for your organisation/group/club	
Enclosed an encoded deposit slip to enable direct credit of any grant payment made	
Enclosed a copy of any documentation verifying your organisations legal status	
Completed Section 2 - community wellbeing and outcomes	
Completed Section 3 – details of your event/project	
Completed Section 4 – Funding requirements – <b>Budget and quotes need to match. Include copies of written quotes.</b>	
Completed Section 5 where funding has been received in the previous 2 years	
Obtained two signatures on your application	

**Please note: Incomplete applications will not be considered. Applicants will be requested to submit relevant outstanding information within 5 days or their application will be returned.**

Page 54

Blank Page

### **Open Meeting**

<b>To</b>	Onewhero–Tuakau Community Board
<b>From</b>	Tony Whittaker General Manager Strategy & Support
<b>Date</b>	17 July 2017
<b>Prepared by</b>	Lianne van den Bemd Community Development Advisor
<b>Chief Executive Approved</b>	Y
<b>DWS Document Set #</b>	CDR0502 / 1763348
<b>Report Title</b>	Application for Funding – Te Kohanga Community Hall Inc.

## **1. EXECUTIVE SUMMARY**

---

The purpose of this report is to present an application for funding from the Te Kohanga Community Hall Inc. towards the cost of purchasing and installing a new water supply system for the hall facility.

## **2. RECOMMENDATION**

---

**THAT** the report from the **General Manager Strategy & Support** be received;

**AND THAT** an allocation of \$..... is made to the **Te Kohanga Community Hall Inc.** towards the cost of purchasing and installing a new water supply system for the hall facility.

**OR**

**AND THAT** the request from the **Te Kohanga Community Hall Inc.** towards the cost of purchasing and installing a new water supply system for the hall facility is declined / deferred until ..... for the following reasons:

## **3. BACKGROUND**

---

The Te Kohanga Community Hall Inc. needs to upgrade the current hall water supply system. The system has previously been supplied from a neighbouring farm and is no longer suitable, as when a leak occurs on the farm the water system is turned off to allow for the leaks to be located and repaired.

In recent times the water system has had a number of breakdowns during peak times when the hall is in usage. The water is also not suitable for drinking at times.

The community hall is important to the Te Kohanga rural communities' wellbeing and has served the community for ninety years.

The hall supports the need for a local low cost community space for events such as wedding's, family gatherings, community meetings, classes/workshops etc.

The new water system includes:

- A new Water Tank (25,000 Litre);
- Ground Works; and
- A new pump and installation.

The Hall users would like it noted that the farm owner has donated the use of the current water system for free and the Hall Committee and community are grateful for this generous contribution to the Te Kohanga community.

#### **4. OPTIONS CONSIDERED**

---

- 1) That the application is approved and an allocation of partial or full funding requested be made.
- 2) That the application is declined.
- 3) That the application is deferred.

#### **5. FINANCIAL**

---

Funding is available to allocate for the year.

The project is noted to cost \$4,299.00. The Te Kohanga Community Hall Inc. is seeking funding of \$4,299.00 towards the cost of purchasing and installing a new water supply system for the Hall.

GST Registered	No
Set of Accounts supplied	Yes
Previous funding has been received by this organisation	No

#### **6. POLICY**

---

The application meets the criteria set in the Discretionary Grants Policy, one of which is that grants up to \$5,000.00 can be funded up to 100% at the discretion of the relevant community board or committee or Council's Discretionary & Funding Committee.

For grants above \$5,000.00 a funding cap of 75% of the total project cost applies (whichever is the greater) and other funding needs to be sought.

Funds cannot be uplifted until all sufficient funds for the project are approved.

## **7. CONCLUSION**

---

Consideration by the Board is required with regard to this funding request.

## **8. ATTACHMENTS**

---

Application for Funding – Te Kohanga Community Hall Inc.



## Te Kohanga Community Hall Inc

SCANNED

Set No \_\_\_\_\_

RECEIVED

10 JUL 2017

Waikato District Council

6 July 2017

Onewhero-Tuakau Community Board  
C/-Lianne van den Bemd  
Community Development Co-ordinator  
Waikato District Council

Dear Community Board Members

### Te Kohanga Hall – Water Supply Project

We are pleased to attach our application for discretionary funding for the installation of a stand alone water system for the Te Kohanga Community Hall.

Currently the water for the Hall is supplied from the neighbouring farm. However, the water supply is intermittent. When leaks occur on the farm, the water supply is turned off to allow the leaks to be located and repaired. Over the last 6 months, the water has been turned off to the Hall on a number of occasions. When water is available, it has on occasions been very brown in colour, making it unsuitable for drinking. As such, water supply cannot be guaranteed to Hall users. Further, while the farmer has generously allowed the Hall to use their water supply free of charge for a period of time, it is not appropriate to continue to rely on this generosity indefinitely. The problems with the water supply means that the Committee is not able to hire the Hall to new users.

A community hall is an important part of a community's wellbeing. It supports local community identity, enhances quality of life through events, social activities and programmes, and encourages a sense of belonging. It provides places for people to connect and to participate in a variety of activities. This is particularly important in a rural community, such as Te Kohanga. The Te Kohanga Community Hall has served the Te Kohanga and wider community for nearly a century. It has historically been a hub of community activities and events. At 90 years old, it also represents an important part of the built, social and cultural heritage of the area, providing an important connection to the area's heritage.

Around 2013, a significant community effort was made to restore the Hall and breathe new life into it, for the benefit of the community. Funding was received to replace the windows, upgrade the women's bathroom and paint the interior. However, since this time, the Hall has again languished and with the committee effectively disbanding, the Hall was run on an ad hoc basis and at risk of closing permanently. In November 2016, a new committee of 11 was established, demonstrating the importance of the Hall to the community. A martial arts club has become a regular user of the Hall, offering self-defence based classes to people from the local area, and beyond. The Committee is looking to actively encourage other community groups to use the Hall on a regular basis for community-focused activities. This includes for example, supporting the Te Kohanga School to use the Hall for its activities. It is very much seen by the Committee as the heart of the community. To achieve this, the Committee must be able to guarantee water for the toilets and kitchen. This makes the installation of a water tank and pump essential to the ongoing use of the Hall.

As well as the issues with the water supply, there are a number of other outstanding maintenance issues which the committee needs to address. These include painting the outside window frames and doors (which is now urgent), upgrading the men's toilet, re-

finishing the hall floor, upgrading the kitchen appliances, repairing doors and rotting floor boards. This work has been estimated to cost in excess of \$15,000. The Committee currently has \$5,700 available in its bank account to address these maintenance issues in a prioritised manner (using volunteer labour wherever possible). The Committee also receives targeted rate funding from the Council, which is collected for the immediate Te Kohanga catchment. However, after the Council has deducted insurance and property related costs, the balance barely covers the Hall's annual power bill. There is no surplus left to meet maintenance costs. As well, the Committee is no longer able to hire the Hall to new users due to the water supply issue and therefore cannot rely on hire fees to fund the installation of the water system. Therefore, a grant from the Community Board is necessary to allow the Hall to continue to operate.

We have attached our funding application and required supporting documentation. We believe this project is worthy of your funding. It will enable the committee to provide a safe, accessible and better maintained community facility which contributes to the community's recreational, social and cultural needs. It also builds community capacity by encouraging a voluntary and community-based organisation to provide activities and services to the local community. This is consistent with the strategic aims and outcomes of Council.

We look forward to your positive consideration of our funding application.

Yours sincerely



Kandi Ngataki  
Co-Chair



Caroline Hurst  
Co-Chair

## DISCRETIONARY FUNDING APPLICATION FORM

### Important notes for applicant:

- It is recommended that, prior to submitting your application, you contact the Waikato District Council's community development co-ordinator, on 07 824 8633 or 0800 492 452, to discuss your application requirements and confirm that your application meets the eligibility criteria.
- Please read the Guidelines for Funding Applications document to assist you with completing this application form.
- All applications must be on this application for funding form. We will not accept application forms that have been altered.
- Please note that incomplete applications WILL NOT be considered. All parts of the application MUST be completed and all supporting information supplied.
- The checklist on page 5 needs to be completed.

### Which fund are you applying to: (Please tick appropriate box)

Discretionary and Funding Committee

Project

Event

OR

### Community Board / Committee Discretionary Fund

Raglan

Taupiri

Onewhero-Tuakau

Ngaruawahia

Huntly

Te Kauwhata

Meremere

### Section I – Your details

#### Name of organisation

Te Kohanga Community Hall Inc

#### What is your organisation's purpose?

To manage the Te Kohanga Community Hall for the benefit of the community

#### Address: (Postal)

14 Cordyline Road, RD5, Tuakau 2695

#### Address: (Physical if different from above)

Cnr Tuakau Bridge-Port Waikato and Kohanga Rds

#### Contact name, phone number/s and email address

Jane Hurst (Secretary), 0217101536, janehurst@xtra.co.nz

#### Charities Commission Number: (If you have one)

Are you GST registered? No  Yes  GST Number \_\_\_/\_\_\_/\_\_\_

Bank account details 06 / 0469 / 0090496 / 00

Bank ANZ Branch Tuakau

The following documentation is required in support of your application:

- A copy of the last reviewed or audited accounts (whichever applies) for your organisation/group/club
- Encoded deposit slip to enable direct credit of any grant payment made
- A copy of any documentation verifying your organisations legal status

## Section 2 – Community wellbeing and outcomes

Which community wellbeing will your project contribute to?

(See the guidelines sheet for more information on this section.)

Social  Economic  Cultural  Environmental

Which of the five community outcomes for the Waikato district does this project contribute to?

(See the guidelines sheet for more information on this section.)

Accessible  Safe  Sustainable  Healthy  Vibrant

## Section 3 – Your event/project

**What is your event / project, including date and location ?** (please provide full details)

The project involves the installation of a stand alone water system for the Te Kohanga Community Hall. It involves a 25,000l tank, water collection from the roof, and a new water pump.

The Hall is currently supplied with water by the neighbouring farmer. The water supply is intermittent and cannot be guaranteed to users of the Hall. The new water system will guarantee water supply for the Hall.

Please see the covering letter for more details.

**Who is involved in your event / project?**

The Te Kohanga Community Hall (including its committee of 11 members)

**How many volunteers are involved?**

11

**What other groups are involved in the project?**

N/A

**How will the wider community benefit from this event/project?**

The Hall has historically been a hub and focal point for the Te Kohanga and wider community. The new water supply will enable the Hall to be used by community groups for wide range of community activities and events.

### Section 4 – Funding requirements

**Note :** Please provide full details of how much your event/project will cost, how much you are seeking from the Waikato District Council and other providers, details of other funding and donated materials/resources being sourced, and current funds in hand to cover the costs of the event/project.

Please complete all of the following sections	<b>GST Inclusive Costs</b> (use this column if you are not GST registered)	<b>GST Exclusive Costs</b> (use this column if you are GST registered)
<b>TOTAL COST OF THE PROJECT/EVENT</b>	\$ 4,299.00	\$
<b>Existing funds available for the project Total A</b> Include any projected income i.e. ticket sales, merchandise etc.	\$	\$

#### Funding being sought from Waikato District Council

<b>Project Breakdown</b> (itemised costs of funding being sought) <i>If there is insufficient space below please provide a breakdown of costs on an additional sheet.</i>	\$	\$
Water Tank (25,000)	2,999.00	
Groundworks	450.00	
Pump and installation	850.00	
<b>Total Funds being sought from WDC Total B</b>	\$ 4,299.00	\$

Has funding been sought from other funders? Yes  No   
If 'Yes', please list the funding organisation(s) and the amount of funding sought

a)	\$ _____	\$ _____
b)	\$ _____	\$ _____
c)	\$ _____	\$ _____
d)	\$ _____	\$ _____
<b>Total of other funds being sought Total C</b>	\$ _____	\$ _____

<b>Total Funding Applied for</b> (Add totals A, B, and C together to make Total D) <b>Total D</b>	\$ 4,299.00	\$
<b>Note : This total should equal the Total Cost of the Project/Event</b>		

Describe any donated material / resources provided for the event/project:

Volunteer labour will be used to assist with installation.

### Section 5 – Previous Funding Received from Waikato District Council

If you have received funding from or through the Waikato District Council for any project/event in the past two years, please list below:

What Board/ Committee	Type of Project/Event	Date recieved	Amount

Please confirm that a 'Funding Project Accountability' form has been completed and returned to Waikato District Council for the funds listed above. Note : this will be checked and confirmed by council staff.

I confirm that an accountability statement has been completed and returned

Signed: \_\_\_\_\_ Name: \_\_\_\_\_

I certify that the funding information provided in this application is correct.

Signature: JHJWST Date: 6 July 2017

Position in organisation (tick which applies) Chairman  Secretary  Treasurer

Signature: Klyatala Date: 6 July 2017

Position in organisation (tick which applies) Chairman  Secretary  Treasurer

## Checklist

Please ensure you have completed all parts of the funding application form by marking the boxes below and include copies of all accompanying documentation required.

Please also ensure you attach the completed checklist with your application.

Items Required	Enclosed ✓
Read and understood the guidelines for funding applications document	✓
Discussed your application with the Waikato District Council community development co-ordinator	✓
Nominated the fund you are applying for	✓
Completed Section 1 – Your details	✓
Enclosed a full copy of the last reviewed or audited accounts (whichever applies) for your organisation/group/club	✓
Enclosed an encoded deposit slip to enable direct credit of any grant payment made	✓
Enclosed a copy of any documentation verifying your organisations legal status	✓
Completed Section 2 - community wellbeing and outcomes	✓
Completed Section 3 – details of your event/project	✓
Completed Section 4 – Funding requirements – <b>Budget and quotes need to match. Include copies of written quotes.</b>	✓
Completed Section 5 where funding has been received in the previous 2 years	✓
Obtained two signatures on your application	✓

**Please note: Incomplete applications will not be considered. Applicants will be requested to submit relevant outstanding information within 5 days or their application will be returned.**

# Tier 4 Performance Report Template

*PBE SFR-C (NFP)*

Legal name of entity:\*

Te Kohanga Community Hall Inc



# Te Kohanga Community Hall Inc.

*Performance Report for the year ended: 30 June 2017*

## Contents

	Page
<b>Independent Accountant Review Report</b>	2
<b>Non-Financial Information:</b>	
Entity Information	3
Statement of Service Performance	4
<b>Financial Information:</b>	
Statement of Receipts and Payments	5
Statements of Resources and Commitments	6
Notes to the Performance Report	8

## Independent Accountants' Review Report

Te Kohanga Community Hall Inc.

### Independent Accountants' Review Report

5 July 2017

Te Kohanga Community Hall Inc  
Tuakau Bridge  
Port Waikato Road  
Onewhero 2693

To Whom It May Concern,

The Management Committee is responsible for the accompanying financial statements of Te Kohanga Community Hall Inc., which comprises of the profit statement for the year ended, June 30, 2017, in accordance with the generally accepted accounting practice of PBE SFR-C (NFP) Public Benefit Entity Simple Format Reporting - Cash (Not-For-Profit).

I have performed a review engagement in accordance with the PBE SFR-C (NFP) Public Benefit Entity Simple Format Reporting - Cash (Not-For-Profit) promulgated by the Department of Internal Affairs for the Charities Services. I did not audit the financial statements, nor was I required to perform any procedures to verify the accuracy or completeness of the information provided by management.

Accordingly, I do not express an opinion, a conclusion, nor provide any form of assurance on these financial statements other than the review revealed that these accounts balance to the records provided to me in accordance with Tier 4 reporting.

The financial statements are prepared in accordance with the NZ GAAP, which is a basis of accounting that is accepted in the New Zealand financial institutions to Tier 4 PBE SFR-C (NFP) Public Benefit Entity Simple Format Reporting - Cash (Not-For-Profit).

The Management Committee has elected to omit substantially all the disclosures ordinarily included in financial statements prepared in accordance with the NZ income tax reporting. The report has been prepared for management reporting only as a NFP entity. If the omitted disclosures were included in the financial statements, they might influence the users' conclusions about the incorporation's assets, liabilities, equity, revenue, and expenses.

Accordingly, the financial statements are not designed for those who are not informed about such matters.

Yours sincerely,



Teresa L Cousins ACA  
Accounting Contractor



## Entity Information

*Who we are? Why do we exist?*

For the year ended: 30 June 2017

<b>Legal name of entity:*</b>	Te Kohanga Community Hall Incorporated
<b>Other name of entity (if any):</b>	
<b>Type of entity and legal basis (if any):*</b>	Incorporated Society
<b>Registration number:</b>	2583384

### Entity's purpose or mission: \*

The purpose of the Society is:

- (i) To administer the Te Kohanga Community Hall for the community
- (ii) To manage the Community Hall and set hire rates subject to Council approval
- (iii) To maintain the Community Hall to a sound standard
- (iv) To keep clean and tidy the grounds

### Entity structure:\*

Incorporated Society

### The main sources of the entity's cash and resources:\*

Hireage of the Hall to community groups and individuals  
 Waikato District Council targeted rate  
 Volunteer time  
 Grants and donations

### The main methods used by the entity to raise funds:\*

Hall rental  
 Waikato District Council targeted rate

### The entity's reliance on volunteers and donated goods or services:\*

Volunteers are on the committee, manage Hall maintenance and perform working bees, manage Hall bookings, make applications for grants, and hold fundraising events.

### Additional information:\*

A new Committee was established in November 2016. The previous Committee had disbanded before completing the administrative requirements for the Society.

### Contact details:

<b>Physical address:</b>	Tuakau Bridge - Port Waikato Road, Onewhero 2693
<b>Postal address:</b>	C/- 14 Cordyline Road, RD5, Tuakau 2695
<b>Phone/fax:</b>	02102277861
<b>Email:</b>	cazhurst@xtra.co.nz
<b>Website:</b>	

# Statement of Service Performance

*What did we do?*

For the year ended: 30 June 2017

## Description of the entity's outcomes:

New Committee established  
 One regular community group using the Hall  
 Maintenance schedule developed  
 Regular cleaning schedule implemented  
 Standard terms of hire developed

Description and quantification (to the extent practicable) of the entity's outputs:*	Actual*	Budget	Actual*
	This year	This year	Last year
Hall hire	2,285.00	N/A	Unknown

## Additional output measures:

## Additional information:

# Statement of Receipts and Payments

*How was it funded? What did it cost?*

For the year ended: 30 June 2017

	Actual*	Budget	Actual*
Notes	This year \$	This year \$	Last year \$
<b>Operating Receipts</b>			
Donations, fundraising and other similar receipts*			
Fees, subscriptions and other receipts from members*			
Receipts from providing goods or services*	2,285.00		
Interest, dividends and other investment income receipts*	6.64		
Other operating receipts	450.22		
<b>Total Operating Receipts</b>	<b>2,741.86</b>		
<b>Operating Payments</b>			
Payments related to public fundraising*			
Volunteer and employee related payments*			
Payments related to providing goods or services*	350.00		
Grants and donations paid*			
Other operating payments	3,819.90		
<b>Total Operating Payments</b>	<b>4,169.90</b>		
<b>Operating Surplus or (Deficit)</b>	<b>(1,428.04)</b>		
<b>Capital Receipts</b>			
Receipts from the sale of resources*			
Receipts from borrowings*			
<b>Capital Payments</b>			
Purchase of resources*			
Repayments of borrowings*			
<b>Increase/(Decrease) in Bank Accounts and Cash*</b>	<b>(1,428.04)</b>		
Bank accounts and cash at the beginning of the financial year*	7,206.54		
<b>Bank Accounts and Cash at the End of the Financial Year*</b>	<b>5,753.50</b>		<b>7,206.54</b>
<b>Represented by: *</b>			
Cheque account(s)	5,753.50		
Savings account(s)			
Term Deposit account(s)			
Cash Floats			
Petty Cash			
<b>Total Bank Accounts and Cash at the End of the Financial Year*</b>	<b>5,753.50</b>		<b>7,206.54</b>

# Statement of Resources and Commitments

*What do we own? What do we owe?*

As at 30 June 2017

## Schedule of Resources

	This year \$	Last year \$
<b>Bank accounts and cash (from Statement of Receipts and Payments)*</b>	<b>5,753.50</b>	<b>7,206.54</b>
<b>Money held on behalf of others*</b>		
Description*	Amount*	Amount*
	N/A	
<b>Money owed to the entity*</b>		
Description*	Amount*	Amount*
	N/A	
<b>Other resources*</b>		
Description and source of value* (cost or current value required if practical to obtain)	Cost or current value*	Cost or current value*
	N/A	

## Schedule of Commitments

	This year \$	Last year \$
<b>Money payable by the entity*</b>		
Description*	Amount*	Amount*
	N/A	
<b>Other commitments*</b>		
Description*	Amount*	Amount*
	N/A	
<b>Guarantees*</b>		
Description*	Amount*	Amount*
	N/A	

## Schedule of Other Information

	This year \$	Last year \$
Grants or donations with conditions attached (where conditions not fully met at balance date)*	Amount*	Amount*
	N/A	
Resources used as security for borrowings*	N/A	

# Notes to the Performance Report

For the year ended: 30 June 2017

## Note 1: Accounting Policies

*How did you do your accounting?*

### Basis of Preparation\*

Te Kohanga Community Hall Inc. is permitted by law to apply PBE SFR-C (NFP) Public Benefit Entity Simple Format Reporting - Cash (Not-For-Profit) and has elected to do so. All transactions are reported in the Statement of Receipts and Payments and related Notes to the Performance Report on a cash basis.

### Goods and Services Tax (GST)\*

Te Kohanga Community Hall Inc. is not registered for GST. Therefore amounts recorded in the Performance Report are inclusive of GST (if any).

## Note 2: Analysis of Receipts

*How was it funded? (These notes are optional)*

Receipt Item	Analysis	This year \$	Last year \$
Fundraising receipts			

### Total

Receipt Item	Analysis	This year \$	Last year \$
Grants and donations			

### Total

Receipt Item	Analysis	This year \$	Last year \$
Fees, subscriptions and other receipts from members			

### Total

Receipt Item	Analysis	This year \$	Last year \$
Receipts from providing goods or services	Hall Hireage	2,285.00	



		Total	2,285.00	
			This year	Last year
Receipt Item	Analysis		\$	\$
Interest, dividends and other investment income receipts	Interest		6.64	

		Total	6.64	
			This year	Last year
Receipt Item	Analysis		\$	\$
Other operating receipts	Targeted rates		450.22	

		Total	450.22	
			This year	Last year
Receipt Item	Analysis		\$	\$
Capital receipts				

		Total		
--	--	-------	--	--

**Note 3: Analysis of Payments**

*What did it cost?* (These notes are optional)

			This year	Last year
Receipt Item	Analysis		\$	\$
Payments related to public fundraising				

		Total		
--	--	-------	--	--

			This year	Last year
Receipt Item	Analysis		\$	\$
Volunteer and employee related payments				

		Total		
--	--	-------	--	--

			This year	Last year
Receipt Item	Analysis		\$	\$
Payments related to providing goods or services	Bond Refunds		350.00	

Required sections are marked with an asterisk '\*\*'

		350.00	
		This year	Last year
Receipt Item	Analysis	\$	\$
Grants and donations paid			

		Total	
		This year	Last year
Receipt Item	Analysis	\$	\$
Other operating payments	Power	827.94	
	Cleaning	250.00	
	Maintenance	2,724.77	
	Bank Fees	15.00	
	RWT	2.19	
	<b>Total</b>	<b>3,819.90</b>	

		Total	
		This year	Last year
Receipt Item	Analysis	\$	\$
Capital payments			

Required sections are marked with an asterisk \*

## Notes 4 - 7

### Note 4: Correction of errors\*

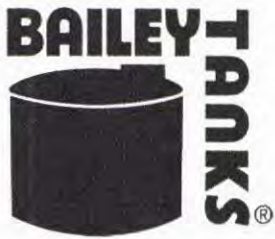
### Note 5: Related party transactions\*

Description of Related Party Relationship*	Description of the Transaction (whether in cash or amount in kind)*	This year	Last year	This year	Last year
		\$	\$	\$	\$
		Value of transactions*	Value of transactions*	Amount outstanding*	Amount outstanding*
Kuk Sool Won -hirer	Reimbursements for payments/cleaning - taken off rental due	544.77		Nil	

### Note 6: Events after the balance date\*

Nature of the event*	Estimated amount*	How, if at all, the event is likely to affect the continuing viability of the entity*

### Note 7: Additional notes



**Bailey Tanks Limited**

Private Bag 94026  
 Manukau City 2241  
 AUCKLAND, NZ  
 GST: 62-020-490

Phone .....: +64 9 2627070  
 Fax.....: +64 9 2627071

76

**Confirmation**

Number .....: SO049317-1

Date.....: 9/06/2017  
 Cust Acct No .....: Z-OTC008580  
 Sales order.....: SO049317  
 Customer order no. ....:  
 Payment .....: Cash on Delivery  
 Page.....: 1 of 1

**Invoice to :**

TeKohunga Community Hall  
 Caroline Hurst Ph: 021 022 77861  
 Cnr Kohunga and Tuakau Bridge  
 -Port Waikato Rd (opposite  
 Tekohunga School)  
 TeKohunga

Attn.....:  
 Phone....: Fax .....

**Deliver to:**

TeKohunga Community Hall  
 Caroline Hurst Ph: 021 022 77861  
 Cnr Kohunga and Tuakau Bridge  
 -Port Waikato Rd (opposite  
 Tekohunga School)  
 TeKohunga

Item number	Description	Quantity	Unit Price	Unit	Ship Date	Disc%	Amount
BT25000	Water Tank 25,000 Litre (5500Gal) Mist Green AK	1.00	2,607.83	EA			2,607.83

Branches: Auckland  
 36 Ash Road  
 Wiri, Manukau  
 Private Bag 94026  
 SAMC, Manukau  
 T: 09 2627070 F: 09 2627071

Christchurch  
 52 Hickory Place  
 Hornby, Christchurch  
 PO Box 16-310  
 Hornby, Christchurch  
 T: 03 3441260 F: 03 3441261

Subtotal	2,607.83
GST	391.17
<b>Total NZD</b>	<b>2,999.00</b>
Paid	0.00
<b>Balance</b>	<b>2,999.00</b>

Electronic payments to: 02-0152-0556358-000

Payment by: 09/06/2017

For terms and conditions see: [www.baileytanks.co.nz](http://www.baileytanks.co.nz)

20<sup>th</sup> June 2017.

Tekoanga community Hall, water alteration, quote.

Ground preparation work.

To level area, in preparation for tank position, as indicated, by Caz, by rear entrance to hall. Area would be 4 metres square for 25000 lt tank base. Labour \$450.00 inclusive.

Please note,

Manufacturers recommend a base of crushed dust and concrete, for the tank to sit on. These materials are not included, but can be spread at no extra cost.

Pump installation, and roof guttering, alteration.

To alter droppers, left side of hall, and to feed new tank, to instal a suitable pressure controlled pump, in kitchen to serve all of hall requirements.

Labour and materials \$850.00 inclusive.

There is no allowance to remove earth from site, and have allowed for overflow of tank, to discharge in same area.

Quote remains valid for 60 days, from date above.

Regards,



Nick J Bartosiak

# Deposit

025 Jan 2017

0011593 04/14



ANZ Bank New Zealand Limited

Tuakau Branch  
7 George Street, Tuakau

Teller's initials  
and stamp

Proceeds of cheques unavailable until cleared. ANZ does not receive deposits marked for specific application. ANZ is not responsible for delays in processing this deposit.

Date

Date

\$

Notes

For credit of

Coins

Sub Total Cash

Cheques  
as per reverse

For credit of

Paid in by (first and last name)

TE KOHANGA COMMUNITY HALL INC.

\$

Teller

Lodged in accordance with the conditions on deposit slip

⑈060469⑈ 0090496⑈00 ⑈ 50

- 
- 
- 
-



# CERTIFICATE OF INCORPORATION

**TE KOHANGA COMMUNITY HALL INCORPORATED**  
**2583384**

This is to certify that TE KOHANGA COMMUNITY HALL INCORPORATED was incorporated under the Incorporated Societies Act 1908 on the 8th day of July 2013.

Registrar of Incorporated Societies  
4th day of July 2017



For further details visit [www.societies.govt.nz](http://www.societies.govt.nz)

Certificate printed 4 Jul 2017 12:58:04 NZT

### **Open Meeting**

<b>To</b>	Onewhero Tuakau Community Board
<b>From</b>	Tony Whittaker General Manager Strategy & Support
<b>Date</b>	14 July 2017
<b>Prepared by</b>	Lianne van den Bemd Community Development Advisor
<b>Chief Executive Approved</b>	Y
<b>Reference #</b>	GOV0504 / 1761001
<b>Report Title</b>	Project Accountability Forms

## **1. EXECUTIVE SUMMARY**

---

The purpose of this report is to present the project accountability forms for projects that have been approved for grant funding by the Onewhero Tuakau Community Board. This is the Second of a bi-annual report to the Board. The respective forms are attached to the report.

## **2. RECOMMENDATION**

---

**THAT** the report from the **General Manager Strategy & Support** be received;

**AND THAT** the Onewhero Tuakau Community Board notes that the following amounts have been spent:

<b>Tuakau Lions Club</b>	<b>Tuakau Christmas Parade</b>	<b>\$1,000.00</b>
<b>Port Waikato Residents &amp; Ratepayers</b>	<b>Installation of CCTV Cameras</b>	<b>\$5,000.00</b>

## **3. ATTACHMENTS**

---

1. Tuakau Lions Club
2. Port Waikato Residents & Ratepayers





# Funding Project Accountability

All successful applicants must complete a project accountability report within 2 months of the completion of the event/project before being eligible for further funding.

Grant received from - Onewhero Tuakau Community board

Organisation/ Initiative name – Tuakau Lions Club

Postal address – P.O.Box 77 Tuakau 2342

Physical address - 16b Coolen Place Tuakau

Contact details:

Name – Bob Bell

Email – [bobl6b@xtra.co.nz](mailto:bobl6b@xtra.co.nz)

Phone – 092368384

0211797245

**Amount of funding you received from Waikato District Council \$1,000.00**

**How the funding received was spent – Tuakau Christmas Parade – Prize Money**

**NOTE:**

- Provide receipts or **Bank statements** for all associated cost – \$1,175.00 as per Bank Statement attached
- Tax invoices not accepted
- Please make sure that all receipts are clear and readable, *unclear* accountability will be returned.

**When did your event/project take place – 3<sup>rd</sup> December 2016**

**How many people attended your event/project - Unknown**

**Comment on the success of your event/project and describe the benefits for those involved:**

(Please provide photo documentation of project undertaken)

**This is Tuakau's largest annual one day event and is enjoyed by the participants and the public.**

**How did your project contribute to the community's wellbeing** (ie social, economic, environmental and/or cultural wellbeing) (See overleaf)

**Cultural**

**Which of the nine Community Outcomes for the Waikato District did this project contribute to and how: (See Information below)**

**Active Waikato**

I hereby declare that the information supplied here on behalf of our organisation is correct. We understand that the information supplied in this application will become public information. We consent to the Waikato District Council collecting the personal contact details provided in the project report and using these details. This consent is given in accordance with the Privacy Act 1993.

Name – R. A. Bell

Position in organisation – President – Project organizer

Signature \_\_\_\_\_

Date - 26 May 2017

#### WAIKATO DISTRICT - COMMUNITY OUTCOMES

- ACCESSIBLE WAIKATO** - A district where the community's access to infrastructure, transport and technology meets its needs.
- ACTIVE WAIKATO** - A district that provides a variety of recreation and leisure options for the community.
- EDUCATED WAIKATO** - A district where education options are varied, and allow our community to be skilled for work and life.
- GREEN WAIKATO** - A district where our natural resources are protected, developed and enhanced for future generations.
- SAFE WAIKATO** - A district where people feel safe and supported within their communities, and where crime is under control.
- SUSTAINABLE WAIKATO** - A district where growth is effectively managed.
- THRIVING WAIKATO** - A district where business and industry are encouraged and supported and employment contributes to a successful local economy.
- VIBRANT WAIKATO** - A district where our heritage and culture are recognised, protected and celebrated.
- WELL WAIKATO** - A district where people can access quality community health and care services.

#### WAIKATO DISTRICT - COMMUNITY WELLBEINGS

- SOCIAL** - The Royal Commission on Social Policy defined 'social well being' as concerned with ensuring people have 'a voice in their future, choice in their lives, and a sense of belonging that affirms their dignity and identity'.
- ECONOMIC**
- Examples of the types of impacts and activities include:
- the allowable use of land through the District Plan
  - the provision of infrastructure and regulation of certain activities
  - the establishment of, and support for, a regional tourism organisation
- CULTURAL** - For the Ministry for Culture and Heritage, cultural well-being is defined as: The vitality that communities and individuals enjoy through:
- participation in recreation, creative and cultural activities; and the freedom to retain, interpret and express their arts, history, heritage and traditions.
- ENVIRONMENTAL** - Environmental wellbeing under the LGA is defined by what environmental outcomes your community wants to achieve, and how they prioritise the actions to achieve them.

#### Written feedback

##### Postal Address

Waikato District Council, Private Bag 544,  
Ngaruawahia 3742 • Telephone 0800 492 452

#### Email feedback

- [info@waidc.govt.nz](mailto:info@waidc.govt.nz)
- [www.waikatodistrict.govt.nz](http://www.waikatodistrict.govt.nz)

Your written feedback, including any personal information supplied, is made available to councillors, Council staff and the public as part of this consultation process. Copies of feedback may also be released at other times on request.

SCANNED  
Set No 1746858



ENTERED  
Jay

## Funding Project Accountability

All successful applicants must complete a project accountability report within 2 months of the completion of the event/project before being eligible for further funding.

Grant received from ONEWHERO TAKAM COMMUNITY  
committee/board

Organisation/ Initiative name  
PORT WAIKATO RESIDENTS & RATEPAYERS INC

Postal address  
PO BOX 798 PUKUKOHE

Physical address

Contact person COIN CHURCH Phone 021 582256

Amount of funding you received from Waikato District Council  
\$ 5000

How the funding received was spent  
INSTALLATION OF 5 CCTV CAMERAS  
IN PORT WAIKATO AT 3 LOCATIONS

Please provide receipts for all associated cost. ✓

When did your event/project take place JAN - MARCH 2017.

How many people attended your event/project N/A.

Comment on the success of your event/project and describe the benefits for those involved:

THE LOCATIONS OF THE CCTV CAMERAS  
COVER THE 2 ROADS INTO PORT WAIKATO  
& THE BUSY BEACH CARPARK.  
HOPEFULLY THEY WILL HELP TO DETER  
POTENTIAL OFFENDERS/TROUBLEMAKERS FROM  
COMMITTING CRIMES IN PORT WAIKATO  
AND PROVIDE IMPORTANT INFORMATION TO  
THE POLICE SHOULD OFFENCES OCCUR.

**How did your project contribute to the community's wellbeing (ie social, economic, environmental and/or cultural wellbeing) (See overleaf)**

HELP PROTECT THE COMMUNITIES PROPERTY  
& THEREFORE CREATE A SAFER PORT  
WAIKATO.

**Which of the nine Community Outcomes for the Waikato District did this project contribute to and how: (See Information below)**

SAFE WAIKATO.  
THRIVING WAIKATO - SUPPORTING BUSINESS  
& TOURISM.

I hereby declare that the information supplied here on behalf of our organisation is correct. We understand that the information supplied in this application will become public information. We consent to the Waikato District Council collecting the personal contact details provided in the project report and using these details. This consent is given in accordance with the Privacy Act 1993.

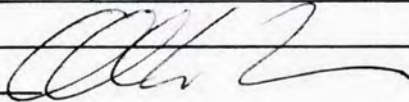
Name

Corin Church.

Position in organisation

measurer

Signature



Date

20/5/17.

WAIKATO DISTRICT - COMMUNITY OUTCOMES

### **Open Meeting**

<b>To</b>	Onewhero-Tuakau Community Board
<b>From</b>	Tony Whittaker General Manager Strategy & Support
<b>Date</b>	12 July 2017
<b>Prepared by</b>	Lynette Wainwright Committee Secretary
<b>Chief Executive Approved</b>	Y
<b>Reference #</b>	GOV0514
<b>Report Title</b>	Community Plan & Long Term Plan Projects

## **I. EXECUTIVE SUMMARY**

---

At its meeting held on 5 December 2016 the Onewhero-Tuakau Community Board considered a report on Long Term Plan Priority Projects. A community plan was submitted to Council's Corporate Planner as follows:

### Skateboard park at Lightbody Reserve.

This will improve facilities in Tuakau for youth. Similar skateboard parks in central, accessible areas have proved very popular in other communities. We would hope that Council will be a major funding partner for the project.

### Additional land purchase in Tuakau are for parks and reserves

It has already been identified that the Tuakau area is short of land for parks and reserves. We believe the current shortfall is approximately 20 hectares. Tuakau is forecast to have extensive population growth and it is anticipated that Tuakau will ultimately be the largest town in the Waikato District. An increase in the available land for parks and reserves will be needed to provide for the needs of the community into the future. With the expected growth land prices will become more expensive and it will also become increasingly to find the right pieces of land to purchase. Land banking now will enable the council to plan more effective for the needs of Tuakau into the future.

The priority areas for parks and reserves would be improved connectivity by the way of walkways/multi use trails to and between existing parks and reserves and with the Waikato River and beside the railway line to Pukekohe. We would like Council to take an active role in trying to turn this into reality.

### Enhanced northern entrance into Tuakau by the railway crossing

We would like to see a concept plan developed to enhance this point of entry into Tuakau. The plan would include improved signage and lighting, sealing the car park and upgrading the

footpath to the railway crossing with curbing , upgrading of footpath on eastern side of Harrisville road including entrance bridge. This enhanced northern entrance would complement the upgrade of the main street of Tuakau.

#### Redevelopment of the Pool/recreational area as a multi use facility

Currently many people wanting to swim or take part in sporting activities need to travel out of Tuakau. This is a barrier to participation for many young people and others in the community without access to a car. To meet the needs of the local community and to plan for the anticipated population growth the redevelopment of the pool so that it is covered and can be used all year and the redevelopment of the recreational area so that it can be used for a range of sporting and recreational activities is a priority. The provision of a modern, local, accessible multi-use facility in Tuakau will assist the Council in getting the local community active and engaged in recreational and sporting activities.

#### Maintenance of Rural roads

A large part of the Onewhero-Tuakau community is rural and has an extensive rural roading network, both sealed and unsealed. There has been an improvement in roading maintenance with the Alliance contract and the Community Board would like to see this good work continuing. The main priority for rural people is a roading network that is maintained in good condition. Vehicles travel at high speed on these often narrow roads and they are well used by trucks carrying heavy loads such as cattle or fertilizer. For this reason sealed roads need to be well maintained and unsealed roads need regular grading. Extensive damage was done to a number of roads by the heavy rains in April 2016 and the repair of these roads is also priority.

#### A new Community Hall for Port Waikato

The Community Board supports the work currently being undertaken to investigate the options for the provision of a new community hall for Port Waikato and would like to see this work continue as a priority.

#### Youth Initiatives in Tuakau

The Community Board recognizes that there are a number of young people in Tuakau and a limited ranges of activities available to them during the evening and weekends locally. The Community Board is supportive of initiatives provided by the police and other youth groups in Tuakau that engage with young people and increase the range of activities available to them, overcoming the need for them to rely on transport to travel outside of the immediate community. The Community Board would like to work with Council and local providers to explore ways these opportunities can be enhanced and supported.

The Board would like to further discuss these projects with a view to moving them forward.

## **2. RECOMMENDATION**

---

**THAT the report from the General Manager Strategy & Support be received.**

### **Open Meeting**

<b>To</b>	Onewhero-Tuakau Community Board
<b>From</b>	Tim Harty General Manager Service Delivery
<b>Date</b>	24 July 2017
<b>Prepared by</b>	Pat Cronin Waste Minimisation Officer
<b>Chief Executive Approved</b>	Y
<b>Reference #</b>	OTCB 2017 (7/08/2017)
<b>Report Title</b>	Onewhero and Glen Murray Rural Monthly Recycling Collection

## **I. EXECUTIVE SUMMARY**

---

This report is to keep the Onewhero-Tuakau Community Board informed of the Onewhero and Glen Murray Rural Monthly Recycling Collection.

Council recently implemented the Long Term Plan 2015/25 (LTP) solid waste changes which included the way refuse and recycling was managed throughout the District. During this project the monthly recycling drop-off service was identified as an area needing resolution regarding how it was funded and whether there is long term support for continuing the service.

Following a Council meeting on 20 June 2017, it was resolved that the Onewhero monthly drop-off service would cease following consultation and with two months' notice. This decision was based on the fact that most of Onewhero now receives kerbside recycling collection and that Council has been fully funding these services through general rates, rather than a targeted one. The current service is not in line with user pays as introduced through the service change which began July 2016. It is also inconsistent with other parts of the district.

The Glen Murray monthly drop-off service has been running for over a year as a trial and Council has signalled a desire to review this service. While Council has been advised that it is generally well used, they have asked that the community be informed of the Onewhero decision and consultation be carried out to understand if the current service at Glen Murray should be retained and if so, how can it be funded by possible users.

To understand this, targeted consultation is being carried out. The consultation is targeting those people who have no kerbside collection and live within a 20km radius of both the Onewhero and Glen Murray sites. There are two options set out to the community.

**Option 1**

A monthly drop-off service of recyclable materials only (glass, plastic – types 1, 2 and 5 only, paper, card, tins and cans). This would be collected from Glen Murray Hall, Highway 22 on the first Saturday of every month from 8.30am to 12.30pm; as is the current situation.

The cost of this service would be an annual targeted rate (\$57.27) from July 2018.

**Option 2**

No service. The current service would cease following the close of the consultation with two months' notice.

**Tuakau**

The future of a recycling drop-off in Tuakau has been addressed in a letter sent to all targeted residents to keep them up-to-date with the current situation.

**2. RECOMMENDATION**

---

**THAT the report from the General Manager Service Delivery be received.**

**3. ATTACHMENTS**

---

Nil



---

### **Open Meeting**

<b>To</b>	Onewhero-Tuakau Community Board
<b>From</b>	Gavin Ion Chief Executive
<b>Date</b>	27 July 2017
<b>Chief Executive Approved</b>	Y
<b>Reference/Doc Set #</b>	OTCB2017
<b>Report Title</b>	Works & Issues Report

## **1. EXECUTIVE SUMMARY**

---

This report is to update the Community Board and provide information on works and issues raised at previous meetings.

## **2. RECOMMENDATION**

---

**THAT** the report from the Chief Executive be received.

## **3. ATTACHMENTS**

---

N/A

### Issues Report - Status of Item Raised at Previous Meeting

	Issue	Assign to	Response
1.	<b>Positioning of new toilets in Tuakau</b>	Service Delivery	A site plan has been provided to the Board. Staff are continuing to work with the Board representative in regards to the placement, type and requirements for the toilet. Staff are also looking at alternative sites as discussed with the Chair.
2.	<b>Dog Run Areas - Tuakau Centennial Park</b>  Have there been any complaints about the use of Centennial Park as a dog run area?	Customer Support	Consultation will begin in August. It will run for a month, anticipating a resolution around October/November.  No complaints have been received specifically relating to the use of the park as an exercise area. There have been complaints received for offences that relate to incidents that occurred in the park, eg people not having full control of their dogs and also people not picking up their dogs faeces.
3.	<b>Tuakau Town Development</b>  Committee keen to understand what's happening re removal of bollards in Main Street. John Rellick evidently has some replacement bollards available. Trees being trimmed and potential planting of new trees. Keen to understand what variety of trees. Community Board to be involved in these amenity decisions in the future.	Service Delivery	A service request has been logged – PRK1736-17.  Consideration is to be given to removing the remaining sections of bollards from around the garden bed areas only. Issue that the hunching surrounding bollards holds the pavement stones in place so covering the holes with new concrete will not look aesthetically pleasing. Entire concrete hunching may need to be removed and replaced. Replacement tree planting an option, species selection will need to be confirmed. In both instances dialogue and consultation required with OCTB.
4.	<b>Te Kohanga School</b>  Is Te Kohanga school on the list for speed safety signs and if so, where on the list? If not, should it be added to the list.	Service Delivery	Te Kohanga School is on the list as medium priority. We are currently doing about 2 to 3 sites per year. Te Kohanga School is ranked at 16 so will be some time before we get to this site at current funding levels.
5.	<b>Tuakau Structure Plan</b>  Workshop required for the new Board about the Structure Plan.	Strategy & Support	The Tuakau Structure Plan is a guide to the development of the town of Tuakau over the next 30 years to 2045. The plan has been prepared by Waikato District Council working with local iwi, residents and key stakeholder. The plan reflects the vision of the local community for Tuakau to maintain its individual identity

	Issue	Assign to	Response
			<p>and character and continue to thrive as a vibrant town while absorbing the expected growth in population and development over the next 30 years.</p> <p>The structure plan is a non-statutory document that will be given effect to by Waikato District Council in two ways. Firstly, it will inform a plan change, Stage 1 only, to the Waikato District Plan to incorporate appropriate rezoning and development controls to enable the future growth and development of Tuakau. Secondly, the plan and proposed staging of development will be used to guide the council's Long Term Plan and strategic planning of infrastructure and service delivery of projects in the town over the next 30 years.</p> <p>Key benefits of the Tuakau Structure Plan:</p> <ul style="list-style-type: none"> <li>▪ Incorporation of community values and aspirations for the future development of Tuakau;</li> <li>▪ Setting of agreed development standards;</li> <li>▪ Guidance to landowners and the council regarding the layout and form of future development of the town;</li> <li>▪ Coordination and staging of infrastructure funding and development;</li> <li>▪ Reduction of land use conflict;</li> <li>▪ Better monitoring and timely release of land supply for urban development; and,</li> <li>▪ More efficient assessment and approval of subdivision and land use.</li> </ul> <p>(Copies of the structure plan will be provided to members at the next meeting).</p>
6.	<p><b>Te Kohanga School</b></p> <p>Maintenance of school pool. Entry for \$410.58 show as spent. The date is wrong.</p>	Strategy & Support	<p>The expenditure of \$410.52 for Te Kohanga School towards the maintenance of school pool for community use was paid on 19 May 2017, however the invoice received was dated 15 August 2016. The Discretionary Fund report for August has been updated to reflect this.</p>
7.	<p><b>ANZAC Day Commitments</b></p> <p>Should this money be refunded to the Board as the costs are now to be picked up by Council.</p>	Strategy & Support	<p>The Discretionary &amp; Funding Committee has a resolution to treat all 2017 ANZAC Day commitments through the events fund. Upon support of this resolution the funds will be returned to the Onewhero-Tuakau Community Board Discretionary Fund.</p>

	Issue	Assign to	Response
8.	<b>BMX Track at the Onewhero Domain</b>  Onewhero Domain Board to contact Grant Sirl.	Service Delivery	Following discussions with John Mitchell from the Onewhero Domain Group they (ODG) are proposing to apply to Council and OCTB for funding. Potential cost estimate \$5,000-\$6,000. Subject to the availability of funding it is proposed to commence construction in late spring/summer period of 2017. Consultation still pending on precise position of track but suggestions possibly nearer the tennis courts for ease of access and off street parking.
9.	The Onewhero Domain Board as requested whether the most cost effective rubbish and recycling service could be provided by Council providing rubbish stickers for the private contractor in the area. (The Domain is a designated camping area).	Service Delivery	Consideration will be given to installing a new rubbish bin beside the playground area with the intention of the Council contractor to maintain.
10.	<b>Update on Plan Change 16</b>	Strategy & Support	Plan Change 16 has been peer reviewed and Councillors will formally consider the way forward in August.
11.	<b>Update on Street Lighting Maintenance/repair</b>  Tuakau street lights – A number of street lights are not working. Service Requests have been issued but no responses received to date. Concerned about the performance of the contractor.	Service Delivery	A large number of streetlights not working in and around the Pokeno/Tuakau area, is as a result of a contractor either not laying required ducting/cabling (pole replacement programmes) or responding to connection faults. The Alliance Team have been proactively chasing for these issues to be rectified (and will continue to). All other faults are programmed when identified / notified.

#### 4. ATTACHMENTS

N/A

---

**Open Meeting**

<b>To</b>	Onewhero-Tuakau Community Board
<b>From</b>	Gavin Ion Chief Executive
<b>Date</b>	26 July 2017
<b>Prepared by</b>	Lynette Wainwright Committee Secretary
<b>Chief Executive Approved</b>	Y
<b>Reference #</b>	GOV0514
<b>Report Title</b>	Bollard repair George Street CBD

**1. EXECUTIVE SUMMARY**

---

The Deputy Chairperson has requested this item be placed on the agenda to enable members to discuss the bollard repairs in the Tuakau CBD.

**2. RECOMMENDATION**

---

**THAT** the report from the Chief Executive be received.

**3. ATTACHMENTS**

---

Photos of bollards in the Tuakau CBD



24-07-2017

Main street Bollard repair replacement

I have asked Grant Sirl of Parks and Reserves if there is any intent to repair replace the damaged bollards in George Street Tuakau

Essentially he has indicated if anything is to be done in the immediate future it is likely it will need to be done from the parks and reserves maintainence budget as after consultation with the Roothing team ( Alliance Group ) they do not form part of the safety systems in the road reserve and were installed for decorative purpose . Repair of them is difficult as they are concreted in ,in a format that does not readily allow for replacement

He has asked for feedback from the OTCB in regards to what they may like to see done ( no promises)

I would also note that much of the other street furniture such as the decorative lighting , rubbish bins and Seating are also in poor condition and may need some attention as well

Shaun Jackson

---

**Open Meeting**

<b>To</b>	Onewhero-Tuakau Community Board
<b>From</b>	Tony Whittaker General Manager Strategy & Support
<b>Date</b>	24 July 2017
<b>Prepared by</b>	Sharlene Jenkins PA to General Manager Strategy & Support
<b>Chief Executive Approved</b>	Y
<b>Reference/Doc Set #</b>	GOV0514 / 1774857
<b>Report Title</b>	Year to Date Service Request Report

**1. EXECUTIVE SUMMARY**

---

To update the Board on the Year to Date Service Request Report for Onewhero-Tuakau.

**2. RECOMMENDATION**

---

**THAT** the report from the **General Manager Strategy & Support** be received.

**3. ATTACHMENTS**

---

Year to Date Service Request Report for Onewhero-Tuakau



# Service Request Time Frames By Ward for <sup>97</sup>

TUAKAU

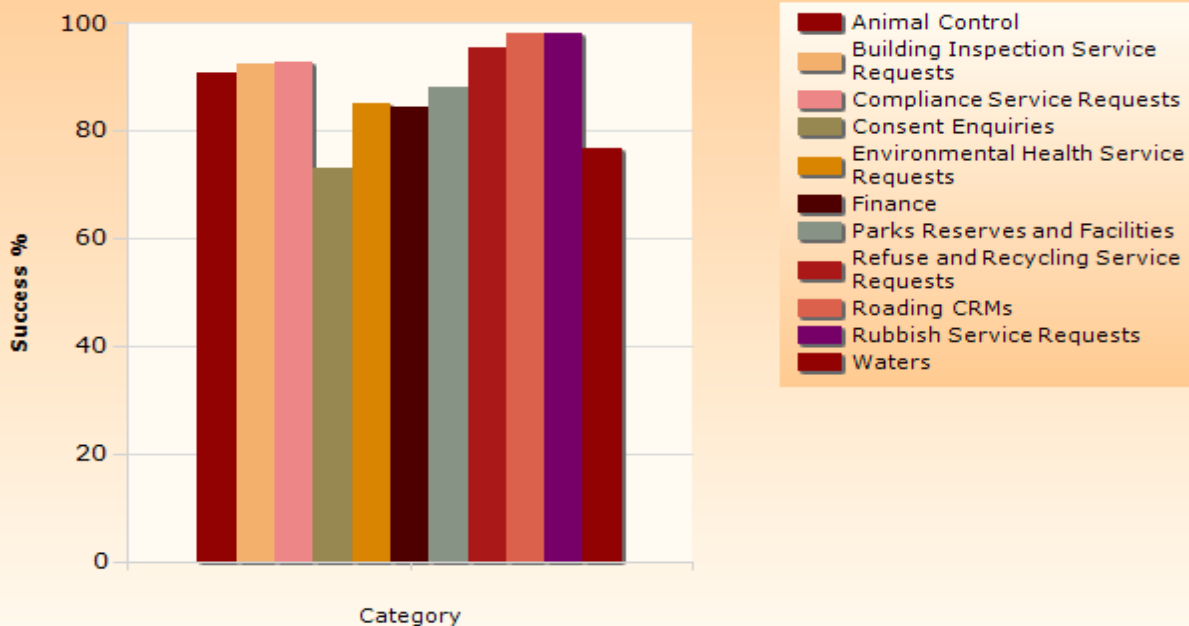


Date Range: 01/01/2017 to 30/06/2017

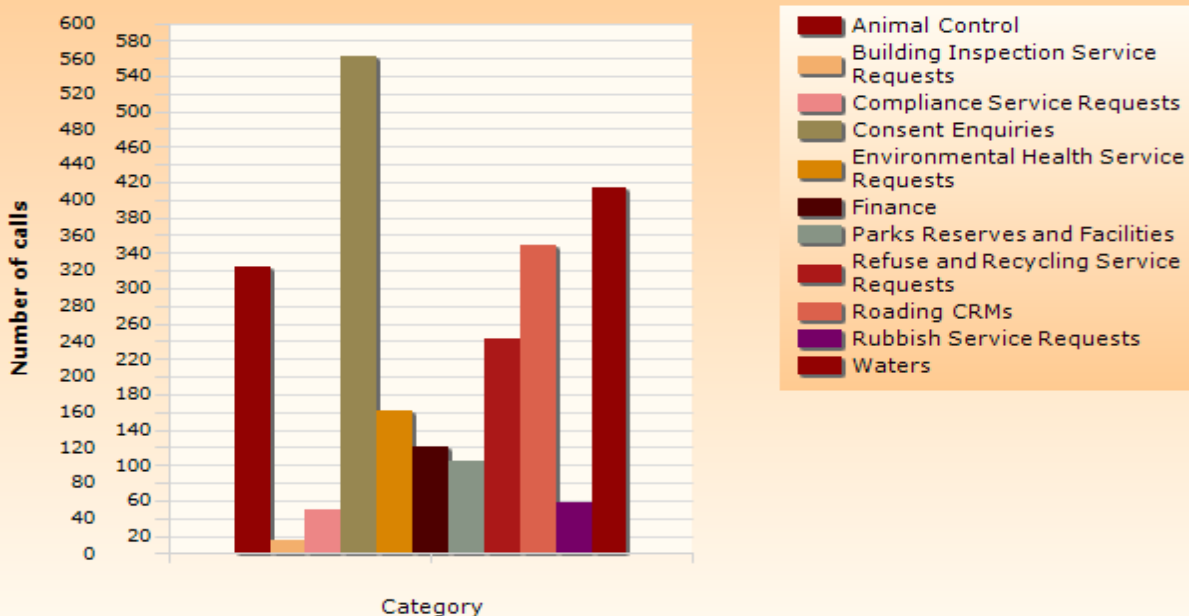
The success rate excludes Open Calls as outcome is not yet known.

7/27/2017 9:59:49 AM

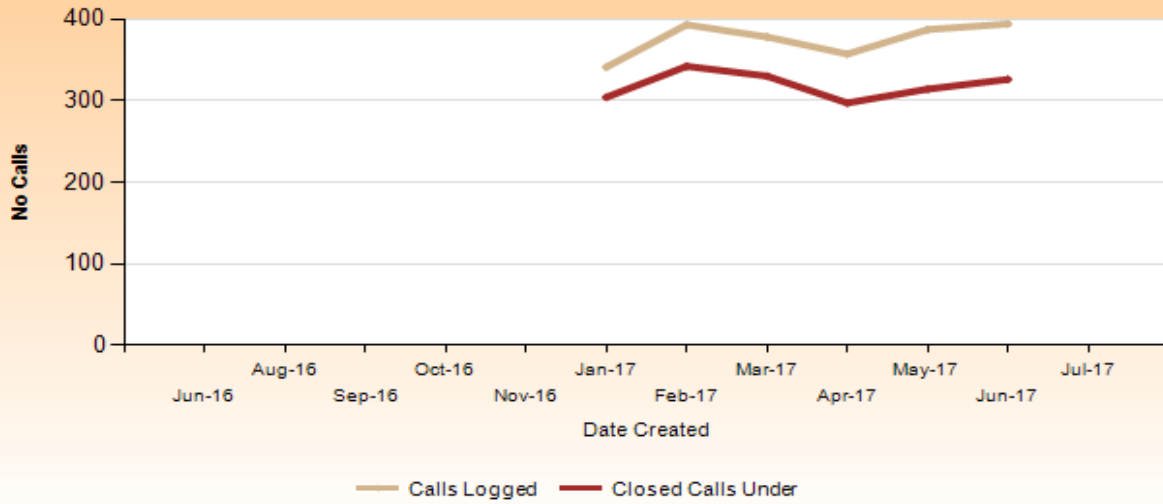
## Call Completion % Success by Type



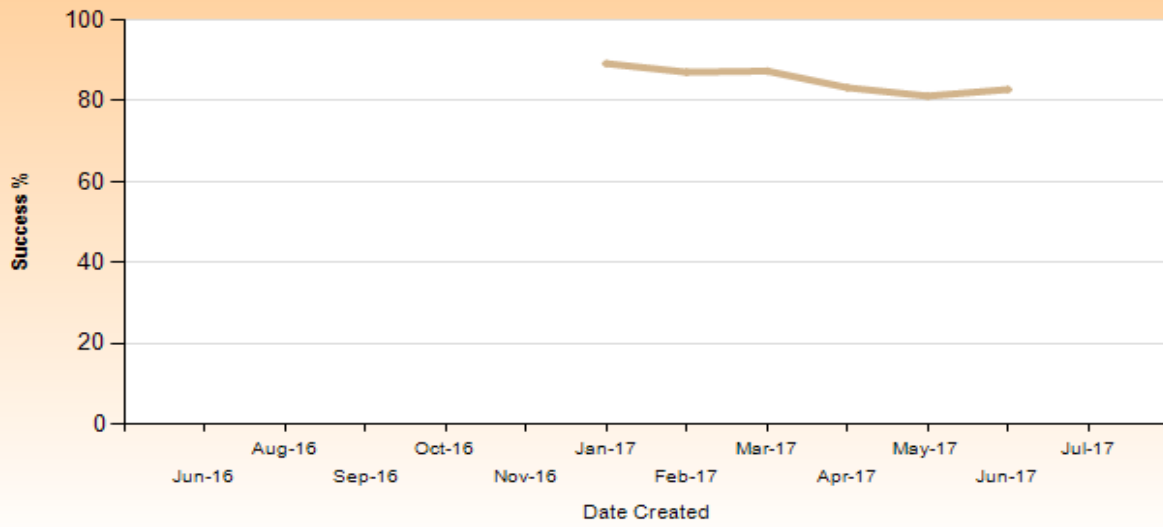
## Number of Calls logged by Type



### Volume of Calls Closed vs Calls Closed in Time



### Completion Success per month



			Open		Closed		
<b>Closed Calls</b> are those calls logged during the time period that are now closed.	<b>Open Calls</b> are all the calls open for the ward and may have been logged at any time.	<b>Number of Calls</b>	<b>Open Calls Over</b>	<b>Open Calls Under</b>	<b>Closed Calls Over</b>	<b>Closed Calls Under</b>	<b>Success Rate</b>
<b>Animal Control</b>							
	<b>Summary</b>	<b>324</b>	<b>25</b>	<b>5</b>	<b>27</b>	<b>267</b>	<b>90.82%</b>
	Animal Charges	49			1	48	97.96%
	Dog / Cat Trap Required	1		1			NaN
	Dog Group Education Visit	1				1	100.00%
	Dog Property Visit	78	14		7	57	89.06%
	Dog Straying - Current	65	3		7	55	88.71%
	Dog Straying - Historic	15	2		2	11	84.62%
	Dog Surrender	4				4	100.00%
	Dog Welfare - Not immediate threat to life	2	1			1	100.00%
	Dog/Animal Missing	26		3	1	22	95.65%
	Dogs Aggression - Current	16	2		6	8	57.14%
	Dogs Aggression - Historic	11			1	10	90.91%
	Dogs Barking Nuisance	38			1	37	97.37%
	Livestock Trespassing - Current	15	3		1	11	91.67%
	Livestock Trespassing - Historic	3		1		2	100.00%
<b>Building Inspection Service Requests</b>							
	<b>Summary</b>	<b>16</b>		<b>3</b>	<b>1</b>	<b>12</b>	<b>92.31%</b>
	Building Inspection Service Requests	16		3	1	12	92.31%
<b>Compliance Service Requests</b>							
	<b>Summary</b>	<b>49</b>	<b>2</b>	<b>5</b>	<b>3</b>	<b>39</b>	<b>92.86%</b>
	Compliance - Animal By Law	1			1		0.00%
	Compliance - Unauthorised Activity	45	2	5		38	100.00%
	Compliance - Urban Fire Hazard (Dry conds only)	2			2		0.00%
	Illegal parking	1				1	100.00%
<b>Consent Enquiries</b>							
	<b>Summary</b>	<b>563</b>	<b>1</b>	<b>12</b>	<b>148</b>	<b>402</b>	<b>73.09%</b>
	Land Hazard Enquiries	3			1	2	66.67%
	Onsite Services	13			2	11	84.62%
	Planning Process	67		2	19	46	70.77%
	Property Information Request	179		2	4	173	97.74%
	Zoning and District Plan Enquiries	301	1	8	122	170	58.22%
<b>Environmental Health Service Requests</b>							
	<b>Summary</b>	<b>162</b>			<b>24</b>	<b>138</b>	<b>85.19%</b>
	Environmental Health Complaint	19			17	2	10.53%
	Noise Complaint - Environmental Health	5			1	4	80.00%
	Noise complaints straight to contractor	138			6	132	95.65%
<b>Finance</b>							
	<b>Summary</b>	<b>121</b>			<b>19</b>	<b>102</b>	<b>84.30%</b>
	Rates query	121			19	102	84.30%

<b>Parks Reserves and Facilities</b>	<b>Summary</b>	<b>105</b>	<b>3</b>	<b>1</b>	<b>12</b>	<b>89</b>	<b>88.12%</b>
	Parks & Reserves - Buildings	43			8	35	81.40%
	Parks & Reserves - Cemetery Complaints (not mowing)	1				1	100.00%
	Parks & Reserves - Council owned land	4			1	3	75.00%
	Parks & Reserves - Graffiti	6	2		2	2	50.00%
	Parks & Reserves - Non-urgent Public Toilet Issues	1				1	100.00%
	Parks & Reserves - Park Furniture	6	1		1	4	80.00%
	Parks & Reserves - Reserve Issues	40		1		39	100.00%
	Parks & Reserves - Urgent Public Toilet Issues	3				3	100.00%
	Parks & Reserves-Council owned buildings on reserv	1				1	100.00%
	<b>Refuse and Recycling Service Requests</b>	<b>Summary</b>	<b>243</b>		<b>7</b>	<b>11</b>	<b>225</b>
Inorganic Non-Collection		2			1	1	50.00%
New collections		4			1	3	75.00%
Recycling Not Collected		51		1		50	100.00%
Refuse - Non-Collection		87		1	1	85	98.84%
Refuse & Recycling Contractor Complaints		22		2	2	18	90.00%
Refuse & Recycling Enquiries		28			4	24	85.71%
Rubbish bag sticker/tag orders - internal use only		15			2	13	86.67%
Tuakau Wheelie Bins		34		3		31	100.00%
<b>Roading CRMs</b>	<b>Summary</b>	<b>348</b>	<b>5</b>	<b>34</b>	<b>6</b>	<b>303</b>	<b>98.06%</b>
	Bridge Maintenance Non-Urgent	1		1			NaN
	Emergency Events - 1 Hr Response	4				4	100.00%
	Footpath Maintenance - Non_Urgent	10		3		7	100.00%
	New Vehicle Entrance Request	50				50	100.00%
	Request 4 new street light path sign etc	14		2	2	10	83.33%
	Road Culvert Maintenance	62		10		52	100.00%
	Road Marking Sign & Barrier Maint Marker Posts	3				3	100.00%
	Road Safety Issue Enquiries	10		3		7	100.00%
	Roading Work Assessment Required - OnSite 5WD	58		10		48	100.00%
	Routine Roding Work Direct to Contractor 5WD Comp	20	3		1	16	94.12%
	Street Light Maintenance	61		3		58	100.00%
	Urgent - Footpath Maintenance	5			1	4	80.00%
	Urgent Roding Work 4Hr Response	33	2			31	100.00%
	Vegetation Maintenance	17		2	2	13	86.67%
	<b>Rubbish Service Requests</b>	<b>Summary</b>	<b>58</b>		<b>4</b>	<b>1</b>	<b>53</b>
Abandoned Vehicle		4				4	100.00%
Illegal Rubbish Dumping		54		4	1	49	98.00%

101

<b>Waters</b>							
<b>Summary</b>		<b>413</b>	<b>9</b>	<b>36</b>	<b>85</b>	<b>283</b>	<b>76.90%</b>
3 Waters Enquiry		39	3	2	19	15	44.12%
3 Waters Safety Complaint - Non Urgent		1	1				NaN
3 Waters Safety Complaint - Urgent		3			2	1	33.33%
Drinking water billing		24				24	100.00%
Drinking Water Final Meter Read		152		18	15	119	88.81%
Drinking Water Major Leak		13	2		3	8	72.73%
Drinking Water minor leak		72	2	4	28	38	57.58%
Drinking Water quality		4			1	3	75.00%
Drinking Water Quantity/Pressure		10			4	6	60.00%
Fix Water Toby		13		1	2	10	83.33%
New Drinking Storm Waste water connections		21		5		16	100.00%
No Drinking Water		8			1	7	87.50%
Stormwater Blocked pipe		7		1	2	4	66.67%
Stormwater Open Drains		12		3		9	100.00%
Stormwater Property Flooding		13		2		11	100.00%
Wastewater Odour		3			1	2	66.67%
Wastewater Overflow or Blocked Pipe		15			6	9	60.00%
Wastewater Pump Alarm		1				1	100.00%
Waters Pump Station jobs - only for internal use		2	1		1		0.00%
<b>Total</b>		<b>2402</b>	<b>45</b>	<b>107</b>	<b>337</b>	<b>1913</b>	<b>85.02%</b>

# Service Request Time Frames By Ward for <sup>102</sup>

ONEWHEREO

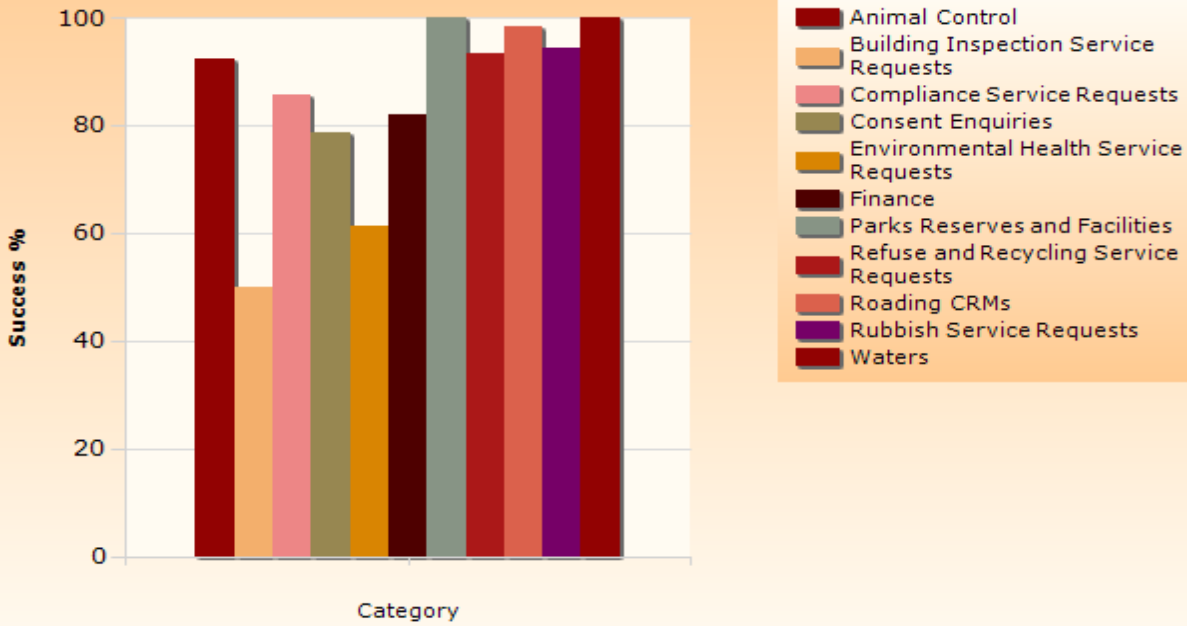


Date Range: 01/01/2017 to 30/06/2017

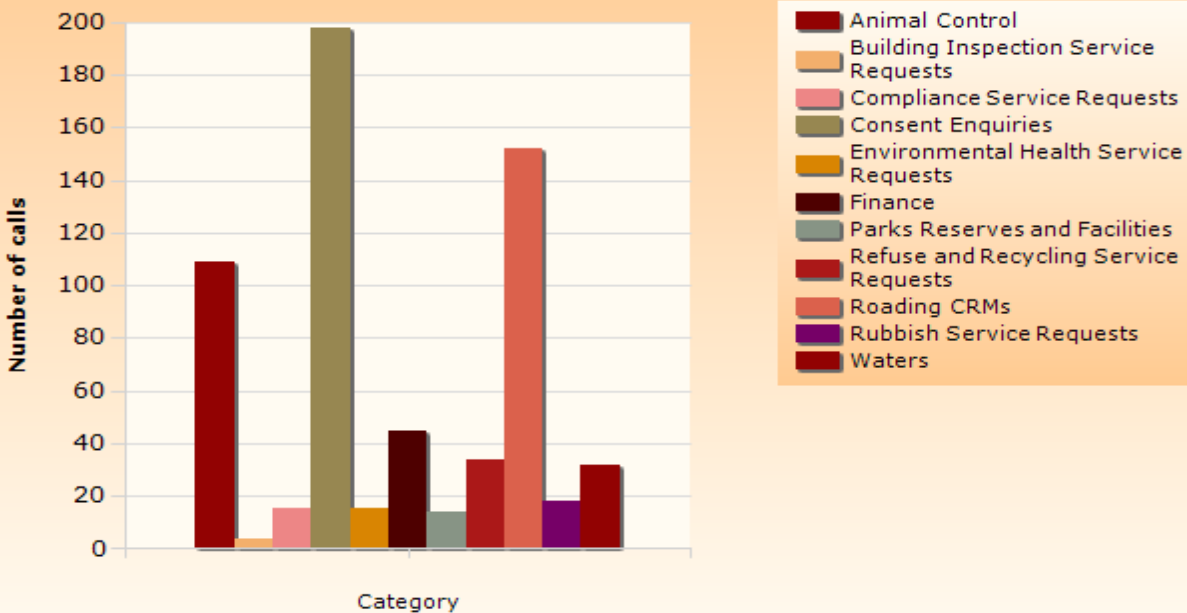
The success rate excludes Open Calls as outcome is not yet known.

7/27/2017 9:54:54 AM

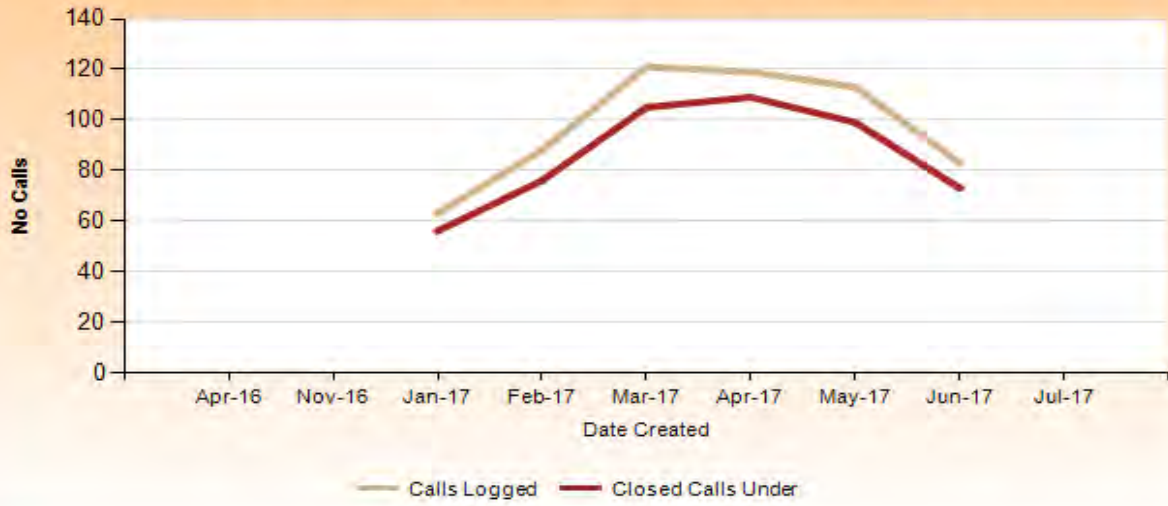
## Call Completion % Success by Type



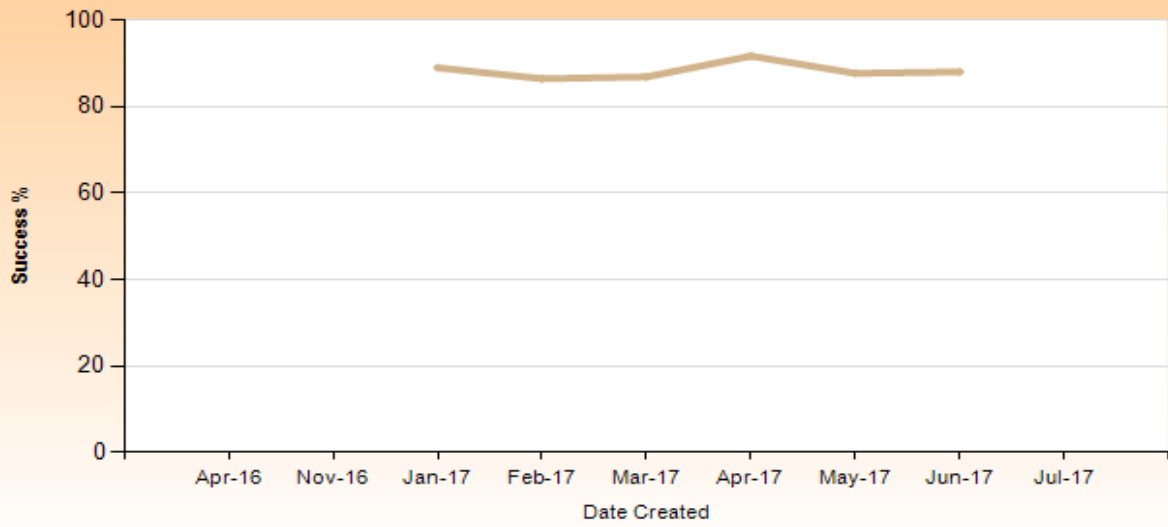
## Number of Calls logged by Type



### Volume of Calls Closed vs Calls Closed in Time



### Completion Success per month



Closed Calls are those calls logged during the time period that are now closed.	Open Calls are all the calls open for the ward and may have been logged at any time.	Number of Calls	Open		Closed		Success Rate
			Open Calls Over	Open Calls Under	Closed Calls Over	Closed Calls Under	
<b>Animal Control</b>							
	<b>Summary</b>	<b>109</b>	<b>13</b>	<b>2</b>	<b>7</b>	<b>87</b>	<b>92.55%</b>
	Animal Charges	16				16	100.00%
	Dog / Cat Trap Required	2		1		1	100.00%
	Dog Property Visit	37	10		6	21	77.78%
	Dog Straying - Current	11				11	100.00%
	Dog Straying - Historic	6	1			5	100.00%
	Dog Welfare - Not immediate threat to life	1				1	100.00%
	Dog/Animal Missing	11				11	100.00%
	Dogs Aggression - Current	1				1	100.00%
	Dogs Aggression - Historic	3				3	100.00%
	Dogs Barking Nuisance	12		1		11	100.00%
	Livestock Trespassing - Current	6			1	5	83.33%
	Livestock Trespassing - Historic	3	2			1	100.00%
<b>Building Inspection Service Requests</b>							
	<b>Summary</b>	<b>4</b>		<b>2</b>	<b>1</b>	<b>1</b>	<b>50.00%</b>
	Building Inspection Service Requests	4		2	1	1	50.00%
<b>Compliance Service Requests</b>							
	<b>Summary</b>	<b>15</b>		<b>1</b>	<b>2</b>	<b>12</b>	<b>85.71%</b>
	Compliance - Animal By Law	1				1	100.00%
	Compliance - Unauthorised Activity	8		1		7	100.00%
	Illegal parking	5			2	3	60.00%
	Non-animal bylaws	1				1	100.00%
<b>Consent Enquiries</b>							
	<b>Summary</b>	<b>198</b>		<b>4</b>	<b>41</b>	<b>153</b>	<b>78.87%</b>
	Land Hazard Enquiries	1				1	100.00%
	Onsite Services	6			1	5	83.33%
	Planning Process	22			7	15	68.18%
	Property Information Request	63				63	100.00%
	Zoning and District Plan Enquiries	106		4	33	69	67.65%
<b>Environmental Health Service Requests</b>							
	<b>Summary</b>	<b>15</b>		<b>2</b>	<b>5</b>	<b>8</b>	<b>61.54%</b>
	Environmental Health Complaint	6		2	4		0.00%
	Noise complaints straight to contractor	9			1	8	88.89%
<b>Finance</b>							
	<b>Summary</b>	<b>45</b>			<b>8</b>	<b>37</b>	<b>82.22%</b>
	Rates query	45			8	37	82.22%
<b>Parks Reserves and Facilities</b>							
	<b>Summary</b>	<b>14</b>				<b>14</b>	<b>100.00%</b>
	Parks & Reserves - Buildings	1				1	100.00%
	Parks & Reserves - Graffiti	1				1	100.00%
	Parks & Reserves - Reserve Issues	9				9	100.00%
	Parks & Reserves-Council owned buildings on reserv	3				3	100.00%



<b>Refuse and Recycling Service Requests</b>	<b>Summary</b>	<b>34</b>	<b>1</b>	<b>2</b>	<b>2</b>	<b>29</b>	<b>93.55%</b>	
	Recycling Not Collected	6				6	100.00%	
	Refuse - Non-Collection	3				3	100.00%	
	Refuse & Recycling Contractor Complaints	2		1		1	100.00%	
	Refuse & Recycling Enquiries	23	1	1	2	19	90.48%	
<b>Roading CRMs</b>	<b>Summary</b>	<b>152</b>	<b>2</b>	<b>16</b>	<b>2</b>	<b>132</b>	<b>98.51%</b>	
	Emergency Events - 1 Hr Response	4				4	100.00%	
	New Vehicle Entrance Request	2				2	100.00%	
	Passenger Transport (incl Bus Shelters)	1		1			NaN	
	Request 4 new street light path sign etc	9			2	7	77.78%	
	Road Culvert Maintenance	40		2		38	100.00%	
	Road Marking Sign & Barrier Maint Marker Posts	1				1	100.00%	
	Road Safety Issue Enquiries	4				4	100.00%	
	Roading Work Assessment Required - OnSite 5WD	44		10		34	100.00%	
	Routine Roding Work Direct to Contractor 5WD Comp	6	1	1		4	100.00%	
	Stock Crossing & Moving	1				1	100.00%	
	Street Light Maintenance	7		1		6	100.00%	
	Urgent Roding Work 4Hr Response	24	1			23	100.00%	
	Vegetation Maintenance	9		1		8	100.00%	
	<b>Rubbish Service Requests</b>	<b>Summary</b>	<b>18</b>			<b>1</b>	<b>17</b>	<b>94.44%</b>
Abandoned Vehicle		4				4	100.00%	
Illegal Rubbish Dumping		14			1	13	92.86%	
<b>Waters</b>	<b>Summary</b>	<b>32</b>	<b>2</b>	<b>2</b>		<b>28</b>	<b>100.00%</b>	
	3 Waters Enquiry	4	2			2	100.00%	
	Drinking water billing	2				2	100.00%	
	Drinking Water minor leak	1				1	100.00%	
	New Drinking Storm Waste water connections	1				1	100.00%	
	No Drinking Water	5				5	100.00%	
	Stormwater Blocked pipe	5				5	100.00%	
	Stormwater Open Drains	7		2		5	100.00%	
	Stormwater Property Flooding	6				6	100.00%	
	Stormwater Property Flooding Urgent	1				1	100.00%	
<b>Total</b>		<b>636</b>	<b>18</b>	<b>31</b>	<b>69</b>	<b>518</b>	<b>88.25%</b>	