

**NOTES TO THE FINANCIAL STATEMENTS  
FOR THE YEAR ENDED 30 JUNE 2014**

**1 STATEMENT OF ACCOUNTING POLICIES**

These are the financial statements of TE WHARE WHAKAU TRUST. TE WHARE WHAKAU TRUST is an incorporated Charitable Trust established under Charitable Trusts Act 1957. The Trust is reporting pursuant to the requirements of its Trust Deed.

These financial statements are a special purpose report prepared for taxation purposes only on the principles contained in the Income Tax Act 2007.

The accounting policies adopted are not in conformity with generally accepted accounting practice. Accordingly the financial statements should only be relied on for the expressly stated purpose.

The accounting principles recognised as appropriate for the measurement and reporting of earnings and financial position on an historical cost basis have been used, with the exception of certain items for which specific accounting policies have been identified.

**Property, Plant, Equipment and Depreciation**

Fixed assets are recorded in the financial statements at cost less accumulated depreciation. Depreciation has been calculated on a straight line basis over the estimated useful life of the assets. The rates of depreciation are shown in the fixed asset schedule.

**Income Tax**

The Trust has charitable status and is therefore exempt from income tax.

**Grants**

Grants received are included in operating revenue. If particular conditions are attached to a grant that would require it to be repaid if these conditions are not met, then the grant is recorded as a liability until the conditions are satisfied.

**Accounts Receivable**

Accounts receivable are stated at their estimated realisable value.

**Goods and Services Tax**

Financial information in these accounts is recorded exclusive of GST with the exception of receivables and payables, which include GST. GST payable or receivable at balance date is included in the appropriate category in the Statement of Financial Position.

**Changes in Accounting Policies**

There have been no specific changes in accounting policies and they have been applied on a consistent basis with those of the previous period.

**2 ANALYSIS OF EQUITY**

**INTEGRITY/AUDIT**

The Trust Deed makes distinction between trust capital and accumulated trustees income. The Equity of the Trust consists of the following:

	2014	2013
Trust Accumulated Income/(Losses)	14,867	51,125
	<u>\$14,867</u>	<u>\$51,125</u>

## TE WHARE WHAKAU TRUST

NOTES TO THE FINANCIAL STATEMENTS  
FOR THE YEAR ENDED 30 JUNE 20143 **FIXED ASSETS SUMMARY**

2014	Cost	Accum Deprn	Book Value
Vehicles	32,621	26,895	5,726
Plant and Equipment	73,244	67,130	6,114
	<u>\$105,865</u>	<u>\$94,025</u>	<u>\$11,840</u>
<b>2013</b>			
Vehicles	42,261	37,490	4,771
Plant and Equipment	72,766	63,618	9,148
	<u>\$115,026</u>	<u>\$101,108</u>	<u>\$13,918</u>

4 **TERM LIABILITIES**

	2014	2013
Hire Purchase	5,331	-
Unexpired Charges	(679)	-
Total Term Liabilities	<u>4,651</u>	<u>-</u>

5 **CONTINGENT LIABILITIES**

The Trust has no material contingent liabilities as at balance date.

6 **CAPITAL COMMITMENTS**

There are no capital commitments at year end (30 June 2013: \$Nil).

7 **RELATED PARTIES**

Don Clark, in his role as a trustee, received consulting fees paid, as shown in the statement of financial performance.

The trustees consider that related party transactions are at fair market values, for the services provided to the Trust.

The management committee is not aware of any other related party transactions requiring disclosure.

**Te Whare Whakaü Trust**

85 George Street, Tuakau  
P.O Box 131, TUAKAU  
PH (09) 236 9615 FAX (09) 236 9622

**INTEGRITY/AUDIT**



Don Clark - Trustee

19/12/14



Hera Ruka - Trustee

19/12/14

Hunter Withers Limited  
Chartered Accountants





## OCEANIA STORM BAND INC.

7 FORSYTHE PLACE  
ROYAL HEIGHTS  
AUCKLAND, NEW ZEALAND

Ph (0064) 09 8326377

Fax (0064) 09 8326377

Mb 0212171935

Email: info@oceaniastorm.co.nz



DATE. FRIDAY 1<sup>st</sup> APRIL, 2016

Invoice #554  
GST No. 99589337

To WHARE WHAKA'U TRUST  
TUAKAU

Description of goods/services	Total
ENTERTAINMENT - LIVE BAND (11 piece) – Tuakau Fun Run & Walk Event (Includes PA System and Backline)	\$1,200.00
Plus GST (15%)	\$180.00
<b>TOTAL</b>	<b>\$1,380.00</b>

**Payment can be made by Direct Deposit to**

BANK : ASB  
Bank Account Name : Oceania Storm Band Inc.  
Bank Account No. : 12-3038-0387208-50  
Branch : Te Atatu Peninsula, Auckland

## SERVICE DESCRIPTION

### Social Work Advocacy, Information & Advice

We can assist with Work and Income, IRD, legal or personal matters, provide information and advice on housing, budgeting and so on.

### Whānau Violence Education (F.V.I.A.R.S)

Targeting whānau with children that have come to the attention of the police. A Whānau Navigator and /or Social Worker will arrange a face to face visit with further limited intervention if required to meet the family violence

### A Whānau Ora Social Work Service

Targeting whānau (families) and rāngatahi (youth) at risk who aspire to address their family violence issues.

A Social Worker and Whānau Navigator will work with you to assess your needs and develop a plan to address those needs.

## 264 Whānau Ora Wānanga

A Whānau Ora programme delivered on marae over four weekend noho (sessions).

### Objectives of the programme are:

- To deliver a whānau ora programme using marae as a place of healing and engagement;
- To weave whānau together using tāne, wāhine and rāngatahi to assist in developing real communication within whānau; and
- To assist whānau to develop and implement a whānau ora plan aimed at restoring whānau wellness and wellbeing.

### Rāngatahi Leadership

Promoting mental health priorities and well-being through community participation and peer leadership.

### Objectives of the programme are:

- To promote rāngatahi leadership in the community;
- To encourage peer support forums;
- To support rāngatahi to plan, organise and deliver initiatives, activities and events; and
- To promote self-responsibility, self care and self-esteem amongst rāngatahi.

## CONTACT

**Nadine, Jody or Don**

### Phone:

(09) 236-9380 or (09) 236-8742

### Mobile:

(029) 770-0097

### Email:

officeadmin@twwt.org.nz

### Fax:

(09) 236-9381

### Address:

5 George Street  
P.O Box 131  
Tuakau 2121



# [ FACTSHEET ]

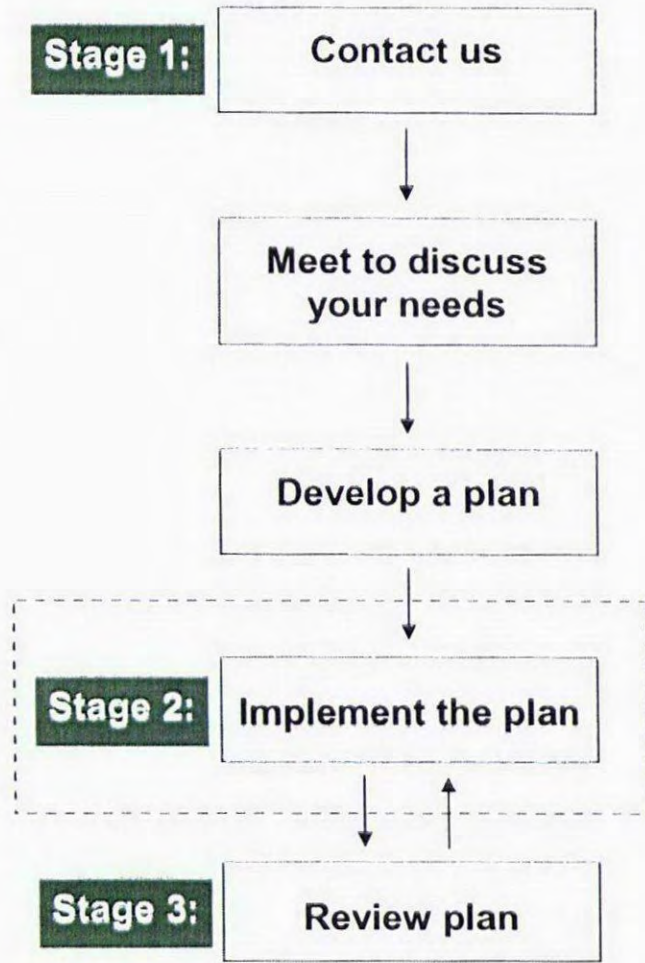
## QUESTION:

What services does Te Whare Whakau Trust offer?

- Social Work Advocacy Information & Advice
- Whānau Violence Prevention Education
- Whānau Ora - Social Work Service targeting at risk whānau (families) and rāngatahi (youth) aspiring to addressing their family violence educational needs.
- Mārae based Whānau Ora Wānanga Programme
- Rāngatahi Leadership Programme
- Career planning and development

## QUESTION:

How can whānau access our services and what is the process?



Kia Ora!

# [ FACTSHEET ]

A Whānau Ora approach to whānau wellness & wellbeing



"We are about strengthening whānau"

Te Whare Whakau Trust

## Tax Invoice

Pending



Neverland castle rental

0800-638376

GST Num:97-577-072

ASB bank

Name: J. Y. ONLINE LIMITED

Account Number: 12-3233-0325299-000

## Te Whare Whakau Trust - Att:Kassah Tali

✉ kassah.twwt@outlook.com

020 4049 2819

Te Whare Whakau Trust 5 George Street Tuakau  
Auckland

<b>Booking ID:</b>	<b>NGJR-160316</b>
<b>Created:</b>	March 16, 2016
<b>Booking Date:</b>	June 26, 2016
<b>Total (NZD):</b>	\$778.50

Item	Rate	Amount
<b>3in1 Junior farmer bouncy castle combo</b> Sun Jun 26, 2016	<b>6 hours:</b> 1 Day @ \$180.00	\$180.00
▶ <b>6.5Kva Petrol Generator</b> Sun Jun 26, 2016	<b>Qty:</b> 1 Day @ \$90.00	\$90.00
<b>2 in 1 Girl's Pink Castle</b> Sun Jun 26, 2016	<b>6 hours:</b> 1 Day @ \$195.00 (10% discount)	\$195.00
<b>\$20 Delivery charge (5)</b> Sun Jun 26, 2016	<b>Qty:</b> 5 x 1 Day @ \$20.00	\$100.00
<b>Jungle big slide (Dry play )</b> Sun Jun 26, 2016	<b>6 hours:</b> 1 Day @ \$300.00	\$300.00
<b>Delivery address:</b> Dr John Light Body Reserve. Tuakau	<b>Sub-Total:</b>	\$865.00
<b>Prefer set-up time:</b> 9am -	<b>Discount:</b>	-\$86.50
<b>Ground for set-up:</b> Grass	<b>Total:</b>	\$778.50
<b>Are there steps to get to the set area?</b> No	<b>Amount Paid:</b>	\$0.00
	<b>GST (Included @ 15%):</b>	\$112.82
	<b>Balance Due:</b>	<b>\$778.50</b>

Refund policy

Fully refund if cancellation been advise 3 days before the party date or due to bad weather.

Free delivery zone







## "A forum for Rangatahi by Rangatahi"

### Who are we?

The Rangatahi (Youth) Leadership Group is run by Te Whare Whakau Trust, a non-profit community organisation based in Tuakau.

### Rāngatahi Leadership programme offers:

- fun, adventurous and educational activities such as team building, outdoor pursuits, teen forums, personal development, sports;
- opportunities to develop capable young leaders;
- regular mentoring sessions for young people aged between 11 and 16 years;
- opportunities to volunteer in community activities/events;
- effective youth-adult partnerships;
- access to family support, budgeting advice, family violence education, careers and community wide support groups.

### For information and registration contact:

Nadine (029) 7700097 or (09) 236-9380 OR  
OfficeAdmin@twwt.org.nz



## "A forum for Rangatahi by Rangatahi"

### Rangatahi Development



A free ten week leadership development programme, that encourages each young person to grow in confidence, learn new skills, actively participate in group and recreational activities and building quality relationships within their whanau and community.

### Rangatahi Leadership



A free eight week leadership programme, which will unleash the potential in each young person that takes part, so that they can assist other young people to reach their full potential.

### Rangatahi Mentoring



A free "one on one" mentoring programme offering each young person support, encouragement, advice and personal development over an eight week period.

### Rangatahi Sport & Recreation



We aim to recognize the value of young people having fun through the delivery of youth, sport and recreation activities. Throughout the programme, we encourage the development of confident, resilient and capable Rangatahi.

To enquire, phone: (09) 236-9380 or TXT 029-7700097 or  
Email: OfficeAdmin@twwt.org.nz