

Agenda for a meeting of the Meremere Community Committee to be held at the Meremere Hall, 21 Heather Green Avenue, Meremere on **THURSDAY, 25 JULY 2024** commencing at **7.00pm**.

1. APOLOGIES AND LEAVE OF ABSENCE

2. CONFIRMATION OF STATUS OF AGENDA

3. PUBLIC FORUM

4. DISCLOSURES OF INTEREST

The register of interests is no longer included on agendas; however, members still have a duty to disclose any interests under this item.

5. CONFIRMATION OF MINUTES

6. REPORTS

6.1	Discretionary Fund Report	2
6.2	Meremere Works and Issues Report	4
6.3	Adoption of Meremere Community Committee Plan	5
6.4	Mayoralty Community Awards	23
6.5	Chairperson's Report	<i>Verbal</i>
6.6	Councillors Report	<i>Verbal</i>

7. GENERAL BUSINESS

GJ Ion
CHIEF EXECUTIVE

To	Meremere Community Committee
Report title	Discretionary Fund Report to 30 June 2024
Date:	25 July 2024
Report Author:	J Schimanski Support Accountant
Authorised by:	Colin Bailey Finance Manager

1. Purpose of the report

Te Take moo te puurongo

The purpose of this report is to update the Meremere Community Committee on the Discretionary fund spend to date, commitments and balance as at 25 July 2024.

2. Staff recommendations

Tuutohu-aa-kaimahi

THAT the Meremere Community Committee receives the report and note, no minutes have been received for meeting held 2 May 2024 and 13 June 2024.

3. Attachments

Ngaa taapirihanga

Attachment 1 – Discretionary Fund report to 30 June 2024

MEREMERE COMMUNITY COMMITTEE DISCRETIONARY FUND REPORT 2023/24 (July 2023- June 2024)
--

MMCC

As at Date: 30-Jun-2024

	GL	10-2090-0000-00-25904
2023/24 Annual Plan		1,550.00
Carry forward from 2022/23		17,777.00
Total Funding		19,327.00
Income		
Total Income		-
Expenditure		<i>excl GST</i>
12-Jun-23	Payment to Ms Lauren Horsfall for the amount of \$50 (excl GST) MMCC2106/04 for the purchase of a baby gift for Melysa Tapiata.	43.48
20-Jul-23	Payment of \$660.00 including GST for the purchase of chemicals MMCC2307/03 for the local footpath/s in the Meremere Village Bio Shield Ltd inv 8445 04/08/2023	573.91
16-Apr-24	Commitment of \$2,261.00 (excl GST, if any) towards the MMCC2404/02 Meremere Children's Day Organising Team to celebrate International Children's Day and local Tamariki payment to M & A Swann inv 0001	2,261.00
10-Jun-24	Payment of \$3,000.00 to the TK Community Response Group MMCC2308/01 (with the commitment to add \$500.00 per year)	3,000.00
Total Expenditure		5,878.39
Net Funding Remaining (Excluding commitments)		13,448.61
Commitments		<i>excl GST</i>
	Commitment of \$500.00 to the Community Response Group MMCC2308/01 per year	500.00
Total Commitments		500.00
Net Funding Remaining (Including commitments)		12,948.61

To	Meremere Community Committee
Report title	Meremere Works & Issues Report – July 2024
Date:	25 July 2024
Report Author:	Karen Bredesen, EA to the General Manager Service Delivery
Authorised by:	Kirsty Wellington, Enterprise Project Management Office Manager

1. Purpose of the report

Te Take moo te puurongo

To update the Committee and provide information on works and issues raised at previous meetings.

2. Staff recommendations

Tuutohu-aa-kaimahi

THAT the Meremere Works & Issues Report be received.

3. Attachments

Ngaa taapirihanga

Attachment 1 – Works and Issues Report – July 2024

Works and Issues Report

	Issue	Area	Action
1.	CCTV Update	Asanka Meththa, Infrastructure Project Manager	Staff are finalising the MOU with Hamilton City Council to enable the procurement of the cameras for the district wide implementation. A briefing is being provided to Councillors late July, to inform them of the programme.

To	Meremere Community Committee
Report title	Adoption of Meremere Community Committee Plan
Date:	17 July 2024
Report Author:	Dominique Thurlow, Community Led Development Advisor (Community Boards)
Authorised by:	Julie Dolan, Economic and Community Development Manager

1. Purpose of the report

Te Take moo te puurongo

To seek approval from the Meremere Community Committee to adopt its Community Committee Plan 2024-2026. The Community Committee Plan outlines the goals and aspirations that the Community Committee has determined under each of the four well-beings, economic, social, environmental and cultural for the next two years.

2. Executive summary

Whakaraapopototanga matua

In June 2023, Her Worship the Mayor invited Community Board and Committee members to meet with her and Councillors to workshop how the partnership with Council could be improved and strengthened, to drive better outcomes for communities.

Follow up meetings between Board and Committee members with Council Managers from Democracy and Economic and Community Led Development agreed that Boards and Committees would focus on leadership on the 4 Wellbeing's, Economic, Social, Cultural and Environmental.

In November 2023, a re-alignment of the Funding Advisor role to the role of Community Led Development – Boards and Committees, was implemented and a dedicated resource to this work programme has been working closely with members of Boards and Committees to develop their framework and future work programme of focus.

As a result, a number of hui have been held with the Community Committee to identify and establish its direction and priorities for the next 2-years. To this end it has developed a plan for a 2-year period that outlines its goals and aspirations that it is wanting to achieve under each of the 4 well-beings including goals around engagement.

3. Staff recommendations

Tuutohu-aa-kaimahi

THAT the Meremere Community Committee approves its Community Committee Plan 2024-2026 for adoption.

4. Background/Discussion

Koorero whaimaarama/Matapaki

The Community Led Development Advisor role was created in November 2023 working primarily with the Boards and Committees on the following:

- Building capability and capacity with Members to strengthen the three-way partnership with Council, Boards and Committees and the Community.
- Create a Community Board/Community Committee Plan that sets out the goals and objectives that they want to achieve during their term in office.
- Training and working alongside our Boards and Committees to achieve their goals and priorities.
- A strong focus on relationship building and engagement with partners and internal stakeholders to showcase the value-add proposition that Boards and Committees have.

Since November 2023 work has commenced with each of the Community Boards and Community Committees to build their capability around the four wellbeing's. As a starting point, a framework was developed in collaboration with Community Board and Community Committee representatives for their Plans. This was then presented by the Members to an end of year celebration held by the Mayoral office in December 2023.

Work is well underway and our 10 Boards and Committees on building the content of the Plan's and highlight what it is that the members want to achieve during their term of office underneath each of the four wellbeing's. The koorero to date has been met with enthusiasm and a desire to really lift the level of conversation away from Works and Issues reporting to discussion around growth and investment, cultural values, protection of our natural heritage and creating the social infrastructure for our people.

5. Next Steps

Ahu whakamua

Once adopted, the next phase includes the creation of an implementation plan where the Community Committee will decide on its key focus areas over the next 6-12 months. In parallel to the implementation plan, work will commence on a 'Plan on a page' for the Community Committee to showcase their individual brand and their key priorities.

6. Attachments

Ngaa taapirihanga

1. Meremere Community Committee Plan.



Meremere Community Committee Plan 2024-2026

TABLE OF CONTENTS



01

**A message from your
Community Committee**
Page 2

02

**About community boards
and committees**
Page 3

03

**Our community
outcomes**
Page 4

04

Our vision
Page 5

05

Our priorities
Page 6

06

Map of community area
Page 11

07

**Key amenities and
facilities**
page 12

08

**Community committee
investment**
Page 13

09

**Your community
committee**
Page 14

A message from your Community Committee

Kia ora koutou,


We are proud to present our plan for the Meremere Community Committee for 2024-26.

Our plan identifies our vision and our priorities over the next two years. It also provides an overview of the Community Committee's role and purpose.

This plan is a living document which will be regularly reviewed to ensure that our priorities are still aligned to improving our social, cultural, economic, and environmental wellbeing.

We are looking forward to listening to, and working with our diverse community, mana whenua, partners, and other organisations to achieve our goals.

Ngaa mihi nui,
The Meremere Community Committee



Group photo of committee

About community Committees

Community Boards play an important role in local governance and citizen-led democracy, serving as the primary link between the local community and the Council. We are your representatives at council, and respected connectors into the community.

Our roles are governed by the Local Government Act 2002. Some of the roles specified are:

- The key connector between the community and council.
- Advocate for and represent the interests of our community.
- Consider and report on all matters referred to us by the council, or any other matter of interest to us as a board.
- Keep track of the services provided by the council in our community.
- Prepare an annual submission to the council for expenditure within our community.
- Engage with organisations and special interest groups within the local community.

Community Board Plans

Community Board Plans are developed every three years and outline our key priorities for our elected term. They also indicate how we will work in partnership with locals and mana whenua to achieve the Council's community outcomes.

A key part of the development of our plan is engagement with locals to ensure that our priorities reflect the needs and desires of Meremere.



Our Community Outcomes



Everything we do is aimed at improving the wellbeing of the people that live, work, and explore the Waikato District. Our Community outcomes are developed under the four wellbeing pillars and describe what we want to achieve for the Waikato District into the future.



Cultural

We celebrate who we are.

We celebrate all cultures. We treasure our diverse communities, and acknowledge our cultural rights and obligations. We honour, understand and implement Te Tiriti o Waitangi and acknowledge the relationship with mana whenua of our district.



Economic

We support local prosperity.

We champion sustainable growth in our local economy. We support local enterprise and encourage innovation and socio-economic prosperity for all, while managing regulatory processes to protect and promote our unique district. We acknowledge our rural and Maaori economies as key contributors to our district's prosperity and sustainability.



Environmental

Our environmental health underpins the health of our people.

We want waterways which are healthy and create connections. We protect and enhance our soils, water and native biodiversity and take care of our taiao (natural environment) for the health and wellbeing of our people, our communities and for future generations.



Social

We have well connected communities.

Our communities are connected, safe, accessible and resilient. We put community wellbeing at the heart of our decisions, and we embrace partnerships to get things done to improve people's lives.



Our Vision

Listen to and work with our diverse community, mana whenua, partners and other organisations to protect and enhance the environmental, social, cultural and economic wellbeing of Meremere.

Our vision statements:

- We are committed to upholding Te Tiriti o Waitangi by engaging well with mana whenua and holding Te Ao Māori values at the core of our decision-making.
- The views, interests, needs and aspirations of residents are effectively represented.
- We have an open and transparent decision-making process that residents can understand and engage in.
- Our focus is to enhance environmental, cultural, social and economic wellbeing.
- To have an strong relationship with our community as a respected arm of Waikato District Council.
- To have a strong relationship with council so that the voice of our community is kept well-informed of things happening in our area.

Our priorities

Cultural Wellbeing

Grow and strengthen our partnerships with mana whenua and our local community to promote, enhance and celebrate our natural environment and significant heritage.

This matters because...

Alongside mana whenua we are kaitiaki of an area with a unique natural environment and significant heritage which make up our unique identity providing a sense of togetherness and belonging. We actively promote and celebrate arts, culture, and heritage by valuing diversity and fostering inclusion in Meremere.

Our commitment

- Hold Te Ao Maori values at the core of our decision-making.
- Celebrate and promote our arts, all cultures, and heritage to encourage strength, togetherness and belonging.
- Work with mana whenua, to understand our local history from a mana whenua perspective.
- Promote, celebrate and educate, in partnership with mana whenua, our cultural heritage and unique natural environment.
- Work, in partnership with mana whenua, to educate our community on the significance of Matariki, Waitangi Day and other culturally significant events.

- Promote and celebrate Diwali, Waitangi Day, Matariki, Chinese New Year and other significant cultural events.
- Continue to build and strengthen our relationship with mana whenua to ensure their input and perspective is heard.
- Hold wananga in our local community hall, in partnership with mana whenua, to enhance our community's cultural wellbeing.
- We as a Board will support discretionary funding on projects aligned to enhancing cultural wellbeing.
- As a Board we will support community-led development with letters of support for our community's priorities identified through the Blueprints and other community aspirations that our community wants to undertake.

Success looks like...

- Regular hui is being held with mana whenua.
- Arts and culturally significant events are celebrated and actively promoted in Meremere.
- Wananga is held in our community hall.

Environmental Wellbeing

Protect, enhance and educate on our natural environment and biodiversity for present and future generations.



This matters because...

As kaitiaki, alongside mana whenua, we have a duty of care to look after our environment now and for our future generations.

We have a unique environment with the Whangamarino Wetland, which covers 7,000ha in the Waikato. It has major recreational, historical and economic values and has been designated an international Ramsar site in recognition of its status as an area of outstanding biodiversity. As kaitiaki of the natural environment we are here to protect, enhance and educate our communities on the quality of our waterways, including the Waikato Awa and our culturally significant sites such as our local Paa.

Our commitment

- Partner with Council, the Waikato Regional Council, Waikato Tainui, mana whenua and Waka Kotahi to identify the many opportunities for native planting and ecological restoration.
- Hold community days, in partnership with other organisations, to educate and encourage the preservation and enhancement of our natural environment and biodiversity. This includes education on the Whangamarino wetland.
- Encourage the use of ecological initiatives to mitigate natural hazards where appropriate.
- Establish a group of local volunteers passionate about protecting and enhancing our natural environment to assist in the education of our community.

- Encourage and support community-led resilience planning.
- Hold and promote annual clean-up days with the Meremere community in partnership with the Waste minimisation team at Council.
- We as a Community Committee will support discretionary funding on projects aligned to enhancing environmental wellbeing.
- As a Community Committee we will support community-led development with letters of support for our community's priorities identified through the Blueprints and other community aspirations that our community wants to undertake.

Success looks like...

- A meeting with Council, Waikato Regional Council, Waikato Tainui, mana whenua and Waka Kotahi to discuss opportunities for native planting and ecological restoration is held.
- An education day is held with the community to promote the importance of our protecting and preserving our natural environment and biodiversity in partnership with others.
- Committee members have established a group of passionate individuals within the community to support and assist with environmental initiatives within the community.
- Resilience planning for Meremere has been promoted through various channels.



Social Wellbeing

Connecting our diverse community through social activity to provide a sense of safety, togetherness and belonging.

This matters because...

We have a diverse community; therefore, it is important that we know our neighbours by fostering and nurturing social cohesion to ensure our community feel connected, safe and welcome.

Our commitment

- Identify and promote social activities such as Children's day, Christmas community dinners, Matariki celebrations, Waitangi Day, Halloween and Diwali.
- Undertake a stocktake of what activities and social services are available in Meremere and promote these activities through various communication channels.
- Promote and celebrate the volunteer organisations that support Meremere.
- Hold community days, in partnership with mana whenua, that invites our community to kooreo around the local detail of living in Meremere.
- Advocate for walkways to enable connectivity and safe passage through our community.
- Advocate for buses, rail, cycleways, green spaces.
- Advocate for public toilets in our park.
- Co-opt passionate individuals in its community to enhance the social wellbeing for our community.



- We as a Community Committee will support discretionary funding on projects aligned to enhancing social wellbeing.
- As a Community Committee we will support community-led development with letters of support for our community's priorities identified through the Blueprints and other community aspirations that our community wants to undertake.

Success looks like...

- The Committee has actively promoted social activity across its community using multiple communication channels.
- The Committee has conducted a stocktake of all social activity and community services within its community.
- Our community will be aware of the different social activities available to them within Meremere.
- A community day has been held to welcome and educate our new and existing community to Meremere.

Economic Wellbeing

Growth, diverse investment, and tourism are encouraged and supported to create a thriving local economy.

This matters because...

A positive thriving economy is built on a foundation of growth, investment, tourism all of which lead to opportunities for our community. All these areas will enable more business and attract visitors leading to employment opportunities and career pathways for our people.

Our commitment

- Partner with organisations to offer the right support to support our young people into employment.
- Work with our youth and other organisations to ensure that our young people are well positioned for sustainable career pathways.
- Partner with mana whenua on opportunities to educate visitors on our significant heritage and rich history.
- Promote and advocate for cultural and environmental tourism opportunities to attract visitors to our village.
- Advocate and lobby for land to be designated appropriately to enable growth and investment to occur.
- Co-ordinate a meeting between Council and the Community Committee to discuss planning options for future residential and commercial growth.
- We as a Community Committee will support discretionary funding on projects aligned to enhancing economic wellbeing.
- As a Community Committee we will support community-led development with letters of support for our community's priorities identified through the Blueprints and other community aspirations that our community wants to undertake.

Success looks like...

- A meeting has been co-ordinated with the Strategic Planning Team to identify future growth and commercial land opportunities.



- The Community Committee has actively promoted and advocated for growth, investment, and tourism for Meremere.
- Youth to employment sessions have been held in partnership with others.
- Discussions with the schools, mana whenua, and other organisations on sustainable career pathways are underway.

Engagement

We are committed to citizen-led decision-making.

This matters because...

Engagement is vital for fostering a strong sense of community and leads to better wellbeing outcomes for our communities. We are representative of the community that elected us to office therefore it is important that we bring the voice of our people to the decision-making table.

Our commitment

- Build capability in our community around Council processes for example, Long Term Plans, Annual Plans, Policy Reviews and other matters that Council is seeking consultation on.
- Through its partnership with Council the Community Committee will be the main conduit out to its community to increase participation in citizen led decision-making.
- Engage with our community on plans in the Meremere area using a variety of communication channels.
- Facilitate community hui on matters of interest to ensure the voice of the

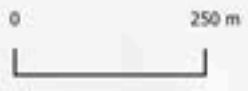
community, including the voice of mana whenua, is well represented within our decision-making.

- Identify key stakeholders within our community and strengthen our relationships with them.
- Continue to strengthen our relationship with local Marae and hapu groups.
- Co-opt passionate individuals to support the Community Committee when required.

Success looks like...

- Increased numbers of submissions are evidenced on areas that the community feel strongly about.
- Regular communication to the community following Community Committee meetings and on matters directly relating to the Meremere community is made.
- Increased levels of community involvement on matters and issues that relate to them.
- Relationships with key stakeholders are being fostered and nurtured.
- The community is using Council systems for their requests.







Key amenities and services

Council Facilities



1 Library and Council Services Centre



3 Council parks

Community and Education



[entry of committee's choice]



[entry of committee's choice]



1 Primary school, 1 Puna Reo ECE centre

Emergency Services

[We would usually put number of police stations, ambulance stations, fire, etc. here. The committee may wish to nominate another area of services or features in this section.]

Recreation and shopping

[We would usually put sporting and recreation, as well as number of shopping areas of town here. The committee may wish to nominate another area of service in this section.]



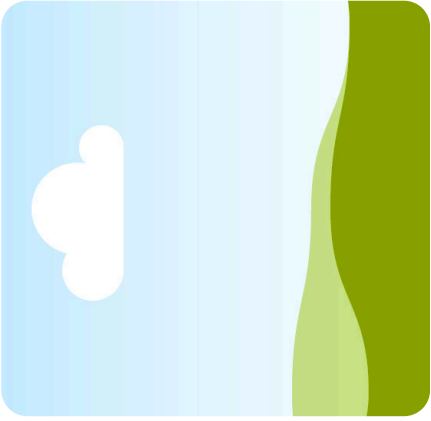
Community Committee Investment

The Meremere Community Committee has funding available for allocation each year. The purpose of this fund is to assist community groups projects.

If you would like to apply for funding, or for more information, please visit waikatodistrict.govt.nz/community-funding-grants or scan the below QR code.



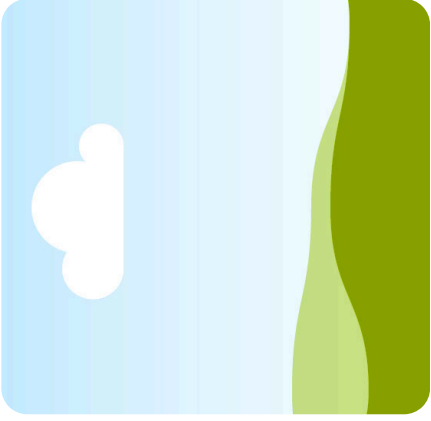
Your Community Committee



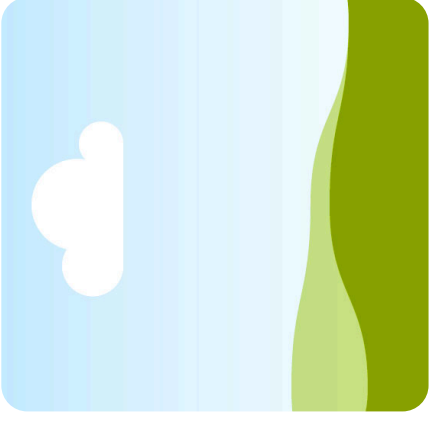
Jim Katu
Chairperson



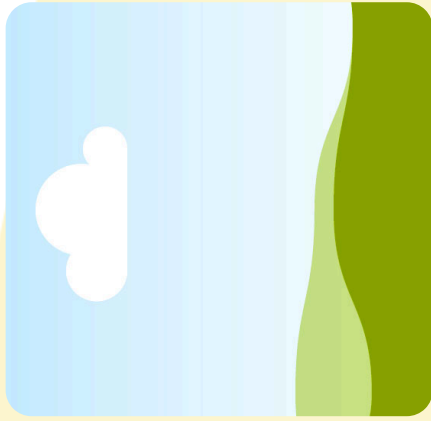
Ben Brown
Deputy Chairperson



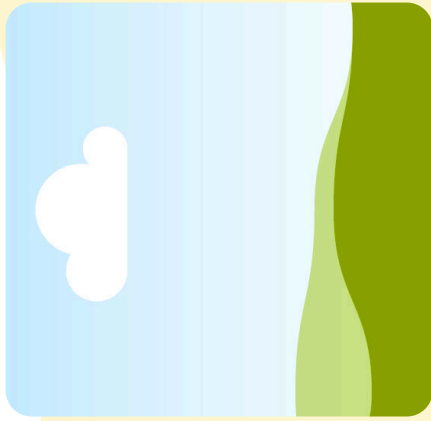
Cecilia Heta



Jacob Calvert



Lauren Wismans



Miles Swann

CREATING
LIVEABLE, THRIVING
+ CONNECTED
COMMUNITIES

To	Meremere Community Committee
Report title	Mayor's Community Awards
Date:	Thursday, 25 July 2024
Report Author:	Colleen Molloy, Mayor's Executive Assistant
Authorised by:	Gaylene Kanawa, Democracy Manager

1. Purpose of the report

Te Take moo te puurongo

To request Community Board's establish a working group of the Chairperson and one other Board Member to provide a nomination for the Mayor's Community Awards in October 2024.

2. Executive summary

Whakaraapopotanga matua

Councillors, community boards and committees are being asked to nominate one recipient each for a Mayoral Community Award. The key purpose of the awards is to recognise volunteer community service. The nominee must:

- be a resident of the Waikato District.
- be nominated by a ward councillor, community board or community committee. Those nominations from community boards and committees must come via the Chairperson.
- have contributed and continue to provide an ongoing voluntary service to the local community.

Following the closing of nominations on **Friday, 23 August at 12noon**, the Mayor will consider the nominees and select the final recipients based on the above criteria. The award recipients will be invited to an awards ceremony to be held on 3 October.

The nomination should include details such as name, address, contact numbers and an explanation of why they should be considered for the award. A template is attached for you to complete and return to Her Worship the Mayor for this purpose.

3. Recommendations **Tuutohu-aa-kaimahi**

THAT the Meremere Community Committee appoints the Chairperson and _____ to provide a nomination by 23 August 2024 for the 2024 Mayoral Awards.

4. Attachments **Ngaa taapirihanga**

Attachment 1 – Nominee application form

Mayoral Community Awards 2024 Nominations (one per page)

Nominated by	
Ward	
Nominee	
Reason why nominated (no more than 100 words)	
Contact details	
Address	
Phone Number	
Email Address	