
Agenda for an extraordinary meeting of the Waikato District Council to be held in the Council Chambers, District Office, 15 Galileo Street, Ngaruawahia on **WEDNESDAY, 7 JULY 2021** commencing at **11.30AM**. ***** Please note start time*****

Information and recommendations are included in the reports to assist the Council in the decision making process and may not constitute Council's decision or policy until considered.

The meeting will be opened with a karakia

1. APOLOGIES AND LEAVE OF ABSENCE

2. CONFIRMATION OF STATUS OF AGENDA

3. DISCLOSURES OF INTEREST

4. REPORTS

4.1 Representation Review 2021

4

GJ Ion
CHIEF EXECUTIVE

TERMS OF REFERENCE AND DELEGATION

Chairperson:	His Worship the Mayor
Deputy Chairperson:	Deputy Mayor
Membership:	The Mayor and all Councillors
Meeting frequency:	Six weekly – or as required
Quorum:	Half of the members (including vacancies)

Purpose

1. To provide leadership to, and advocacy on behalf of, the people of the Waikato District.
2. To define and represent the total communities' interests, ensuring ongoing community and economic development, the effective stewardship of existing assets, sustainable management of the environment, and the prudent management of the communities' financial resources.

Terms of Reference

The Council's terms of reference include the following powers which cannot be delegated to committees, subcommittees, officers or any other subordinate decision-making body:

1. The power to make a rate.
2. The power to make a bylaw.
3. The power to borrow money, or purchase or dispose of assets, other than in accordance with the Long-Term Plan.
4. The power to adopt a Long-Term Plan, Annual Plan, or Annual Report.
5. The power to appoint a Chief Executive.
6. The power to adopt policies required to be adopted and consulted on under the Local Government Act 2002 in association with the Long-term Plan or developed for the purpose of the local governance statement, including the Council's Infrastructure Strategy.
7. The power to adopt a remuneration and employment policy.
8. The power to approve or amend the Council's Standing Orders.
9. The power to approve or amend the Code of Conduct for elected members, and consider any recommendations made in relation to a complaint lodged under the Code.
10. The power to appoint and discharge:
 - a. members (including chairpersons) of Council committees and subordinate decision-making bodies, subject to the Mayor's powers under section 41A Local Government Act 2002; and
 - b. elected member representatives on external organisations.
11. The power to establish a joint committee with another local authority or other public body, and appoint elected members as representatives on such committees or bodies.
12. The power to make the final decision on a recommendation from the Ombudsman where it is proposed that Council not accept the Ombudsman's recommendation.
13. The power to approve or change the District Plan, or any part of that Plan, in accordance with the Resource Management Act 1991.
14. The power to amend or replace the delegations in Council's Delegations Register (except where expressly permitted in the Delegations Register).

To exercise the following powers and responsibilities of Council, which the Council chooses to retain:

1. To approve a proposed policy statement or plan under the Resource Management Act 1991.
2. To approve changes to boundaries of the District under the Resource Management Act 1991 or any other legislation.
3. In respect of District Plan decisions:
 - a. To appoint independent commissioners to a panel for hearings of a Proposed District Plan;
 - b. To approve the recommendation of hearings commissioners on a proposed plan, plan change or variation (including private plan change); and
 - c. To approve a proposed plan or a change to a district plan under Clause 17, Schedule 1 of the Resource Management Act 1991.
4. To adopt governance level strategies, plans and policies which advance Council's vision and strategic goals (e.g. Hamilton to Auckland rail), other than where expressly delegated to a committee.
5. To approve Council's recommendation to the Remuneration Authority for the remuneration of elected members.
6. To approve the Triennial Agreement.
7. To approve resolutions required to be made by a local authority under the Local Electoral Act 2001, including the appointment of an electoral officer and reviewing representation arrangements.
8. To approve any changes to the nature and delegations of any Council committees or subordinate-decision making bodies.
9. To approve the Local Governance Statement.
10. To approve any additional funding decisions required for the Watercare Services contract.
11. To receive six-monthly reports from each Community Board on its activities and projects.

Open Meeting

To	Waikato District Council
From	Gavin Ion Chief Executive
Date	30 June 2021
Prepared by	Gaylene Kanawa Democracy Team Leader
Reviewed by	Dale Ofsoske (Electoral Officer)
Chief Executive Approved	Y/N
Reference/Doc Set #	GOV1301
Report Title	Waikato District Council's Representation Review - 2021 Initial Proposal

I. EXECUTIVE SUMMARY

The purpose of this report is to seek Council's approval of an Initial Proposal for its review of representation arrangements that will apply for at least the 2022 triennial election.

The Local Electoral Act 2001 ("LEA") requires local authorities to undertake a review of their representation arrangements at least once every six years. Council carried out its last review in 2018 (for the 2019 and 2022 triennial election). In considering Council's 2018 proposal, it was agreed with the Local Government Commission that Council would undertake a more comprehensive review in the 2019-22 triennium.

Council has previously resolved to retain First Past the Post as its electoral system, and to establish one or more Maaori wards (the latter following recent changes to the LEA to remove public poll provisions). The decision to establish one or more Maaori wards triggers the legislative requirement to complete a representation review (which was already underway).

The Council must consider the following issues in determining its representation review:

- Identifying communities of interest across the district; and
- Ensuring the communities of interest are represented effectively by determining, amongst other things, the number of councillors and whether they represent communities via 'at large', wards or a mixture of wards and 'at large'; and
- Ensuring communities are represented fairly so that each ward councillor represents approximately the same number of people (within a range of +/-10%).

A preliminary engagement programme between August 2020 and November 2020 sought community views on communities of interest and various representation models to ensure representation arrangements across the district were effective and fair. The preliminary engagement comprised an online survey and seven focus groups with stakeholders and community representatives.

The report provides detail on the preliminary engagement undertaken, the discussion and briefings with councillors and community boards to assess various options, and an analysis of those options. A summary of the recommended initial proposal is as follows:

- 13 councillors (11 general ward councillors and two Maaori ward councillors) elected from eight wards (seven general wards and one district-wide Maaori ward), plus the mayor 'at large':

Ward	Number of Councillors	Communities
Te Takiwaa Maaori Ward	Two Maaori ward councillors	Maaori electoral population district wide
Central General Ward	Two general ward councillors	Urban communities located by the Waikato river
Pokeno-Hunua General Ward	One general ward councillor	North-western urban and rural communities that connect with Auckland
Port Waikato General Ward	One general ward councillor	Western rural/coastal communities
Tamahere-Newcastle General Ward	Three general ward councillors	Communities adjoining to, and with a strong connection with, Hamilton city
Tuakau General Ward	One general ward councillor	Urban northern community with connections to Auckland
Waerenga-Hukanui General Ward	Two general ward councillors	Eastern rural communities
Whaingaroa General Ward	One general ward councillor	Raglan and south-western rural/coastal communities

- Retain the current five community boards, each with six elected members and one or two appointed members:

Community Board	Number of members	Proposed changes
Huntly Community Board	Six elected members and two appointed members, being one of the Central general ward councillors and one of the Te Takiwaa Maaori ward councillors.	No changes proposed.
Ngaruawahia Community Board	Six elected members and two appointed members, being one of the Central General Ward councillors and one of the Te Takiwaa Maaori ward councillors.	Minor boundary alterations to include new residential properties adjoining the current board area, and remove an area to the south of the current board area.

Community Board	Number of members	Proposed changes
Tuakau-Onewhero Community Board	Six elected members and two appointed members, being the Tuakau general Ward councillor and the Port Waikato general ward councillor [or one of the Te Takiwaa Maaori ward councillors.]	Name change proposed and minor boundary changes to incorporate new boundary for Tuakau Ward.
Raglan Community Board	Six elected members and two appointed members, being the Whaingaroa general ward councillor and one of the Te Takiwaa Maaori Ward councillors.	No changes proposed to boundaries. Fair representation would include an additional Te Takiwaa Maaori ward councillor.
Taupiri Community Board	Six elected members and two appointed members, being one of the Central general Ward councillors and one of the Te Takiwaa Maaori ward councillors.	No changes proposed to boundaries Fair representation would include a Te Takiwaa Maaori ward councillor.

The reasons for the proposed changes are detailed further in the [Recommendation](#) and [Options](#) sections of this report.

If approved, the initial proposal will be open to public consultation for the period of 14 July 2021 to 20 August 2021, followed by hearing of submissions at a Council meeting on 9 September 2021 (this option providing just over five weeks for consultation which more than meets the legislative requirements of one month).

Alternatively if Council wish to have a full six week consultation period we would open the submission period on 14 July 2021 and close on 25 August 2021, the impact of this would be moving the Council meeting to hear submissions to a date in mid September.

2. RECOMMENDATION

- a) **THAT the Waikato District Council resolves, in accordance with sections 19H and 19J and clauses 1 and 2 of Schedule 1A of the Local Electoral Act 2001, to adopt the following as its initial proposal for the review of representation arrangements for at least the 2022 triennial election:**
- i) **Waikato District Council to comprise the mayor elected at large and 13 councillors elected under the ward system, specifically 11 general ward councillors and two Maaori ward councillors ;**

ii) **Waikato District Council be divided into eight wards, these being:**

Ward and number of councillors	Communities of interest	of Geographic Reference
Te Takiwaa Maaori Ward Two (2) Maaori ward councillors	District-wide	The entire district - proposed boundaries of which are shown on Attachment 1
Central General Ward Two (2) general ward councillors	Huntly, Ngaruawahia, Ohinewai, Pukemiro, Rotongaro, Rotowaru, and Taupiri.	The central part of the District with communities either side of the Waikato River - proposed boundaries of which are shown on Attachment 2
Pokeno-Hunua General Ward One (1) general ward councillor	Pokeno, Hunua Ranges (portion) Mangatawhiri, Mangatangi and Mercer.	The northeastern part of the district bordering Auckland Council in the north and Hauraki District in the east – the proposed boundaries of which are shown on Attachment 3
Port Waikato General Ward One (1) general ward councillor	Aka Aka, Glen Murray, Matira, Naike, Otaua, Onewhero, Port Waikato, Pukekawa-Opuatia, Ruawaro, Te Akau, Te Kohanga, Waikeretu, Waikokowai and Waiuku-Karioitahi.	The northwestern part of the district bordering Auckland Council in the north - the proposed boundaries of which are shown on Attachment 4
Tamahere-Newcastle General Ward Three (3) general ward councillors	Hautapu, Horotiu, Horsham Downs, Koromatua, Matangi, Puketaha, Rotokauri, Tamahere, Te Kowhai and Whatawhata.	The southeastern part of the district bordering Hamilton City Council in the west/south/east – the proposed boundaries of which are shown on Attachment 5
Tuakau General Ward One (1) general ward councillor	Tuakau	The northern part of the district bordering Auckland Council in the north – the proposed boundaries of which are shown on Attachment 6

Ward and number of councillors	Communities of interest	of Geographic Reference
Waerenga-Hukanui General Ward Two (2) general ward councillors	Eureka, Gordonton, Hampton Downs, Hautapu, Maramarua, Meremere, Miranda, Orini-Tauhei, Pukemoremore, Rangiriri, Te Hoe, Te Kauwhata, Waerenga, Waiterimu-Matahuru Whangamarino, and Whitikahu.	The eastern part of the district bordering Hauraki District Council in the east – the proposed boundaries of which are shown on Attachment 7
Whaingaroa General Ward One (1) general ward councillor	Glen Massey, Makomako, Okete, Raglan, Ruapuke, Te Mata, Te Uku, Waingaro, Waitetuna	The southwestern part of the district bordering Waipa District Council in the east and Otorohanga District Council in the south – the proposed boundaries of which are shown on Attachment 8

iii) Confirms the population that each ward member represents (based on population estimates as at 30 June 2020) are as follows, noting that:

1. the population that each general ward councillor represents is within the range of 6155 +/- 10% (5,539 – 6,770) in compliance with section 19V(2) of the Local Electoral Act 2001; and
2. the number of Maaori ward members complies with Schedule 1A of the Local Electoral Act 2001:

Ward	Population Estimate (as at 1 July 2021)	Number of Councillors	Population per Councillor	+/- 10%
Te Takiwaa Maaori Ward	15,150	2	7,575	100%
Central General Ward	12,400	2	6,200	101%
Pokeno-Hunua General Ward	6,510	1	6,510	106%
Port Waikato General Ward	6,520	1	6,760	106%
Tamahere-Newcastle General Ward	17,150	3	5,617	93%
Tuakau General Ward	6,420	1	6,180	104%

Ward	Population Estimate (as at 1 July 2021)	Number of Councillors	Population per Councillor	+/- 10%
Waerenga-Hukanui General Ward	12,250	2	6,125	100%
Whaingaroa General Ward	6,610	1	6,155	107%

iv) Retains five (5) community boards representing five (5) communities, these being:

Community Board and number of members	Communities	Geographic Reference
Huntly Community Board Six (6) elected members and two appointed members, being one of the Central general ward councillors and one of the Te Takiwaa Maaori Ward councillors.	Huntly	The current Huntly Community Board area - the proposed boundaries of which are shown on Attachment 10
Ngaruawahia Community Board Six elected members and two appointed members, being one of the Central General Ward councillors and one of the Te Takiwaa Maaori ward councillors.	Ngaruawahia	The current Ngaruawahia Community Board area with slight boundary adjustments to incorporate new development at River Road and stop the boundary at the golf course – the proposed boundaries of which are shown on Attachment 12
Tuakau-Onewhero Community Board Six elected members and two appointed members, being the Tuakau general Ward councillor and the Port Waikato general ward councillor [or one of the Te Takiwaa Maaori ward councillors.]	Tuakau, Onewhero, Port Waikato	The current Onewhero-Tuakau Community Board with slight boundary adjustments to accommodate the changes to the Tuakau Ward – the proposed boundaries of which are shown on Attachment 14

Community Board and number of members	Communities	Geographic Reference
Raglan Community Board Six elected members and two appointed members, being the Whaaingarua general ward councillor and one of the Te Takiwaa Maaori Ward councillors.	Raglan	The current Raglan Community Board area - the proposed boundaries of which are shown on Attachment 16
Taupiri Community Board Six elected members and two appointed members, being one of the Central general Ward councillors and one of the Te Takiwaa Maaori ward councillors.	Taupiri	The current Taupiri Community Board - the proposed boundaries of which are shown on Attachment 18

v) **In accordance with section 19K(2) of the Local Electoral Act, the Council resolves that the reasons for the proposed changes to the current representation arrangements are:**

1. **To reflect the establishment of one or more Maaori wards in accordance with Council's resolution on 20 May 2021;**
2. **To reflect the population growth across the district since the last representation review and the associated effect on communities of interest within the district;**
3. **To better align names of wards with the location and significance of the communities represented in those wards;**
4. **To reflect the common interests of communities directly neighbouring Hamilton city;**
5. **To provide effective and accessible representation to rural communities of interest within the district;**
6. **For the minor boundary alterations to the community boards, to reflect growth in the respective communities and ensure effective representation of those communities.**

b) **THAT the Waikato District Council adopt the Waikato District Council's Representation Review 2021 Initial Proposal for consultation starting 14 July 2021 and closing 20 August 2021 and a public notice is published to that effect, in accordance with the Local Electoral Act 2001.**

- c) **THAT the Waikato District Council agrees to hear submissions on the Initial Proposal at an extraordinary Council meeting on 9 September 2021 and, if required, 10 September 2021.**
- d) **THAT the Waikato District Council authorises the Chief Executive, in consultation with the Political Working Group (consisting of Mayor Sanson, Cr Bech and Cr Sedgwick), to approve the Statement of Proposal consultation document and submission form.**

3. BACKGROUND

The LEA requires every local authority to undertake a review of their representation arrangements at least once every six years and if Maaori wards or constituencies are introduced. These reviews determine the number of councillors to be elected, the basis of election for councillors and, if this includes wards, the boundaries and names of these wards. Reviews also include whether there are to be community boards and if so, arrangements for these boards. Representation arrangements must provide fair and effective representation for individuals and communities.

Current representation arrangements, in addition to the mayor elected at large, are 13 councillors elected from 10 wards, and 30 community board members elected from five community boards:

Ward	Councillors
Awaroa ki Tuakau	2
Eureka	1
Hukanui-Waerenga	1
Huntly	2
Newcastle	1
Ngaruawahia	2
Onewhero-Te Akau	1
Raglan	1
Tamahere	1
Whangamarino	1

Community Board	Members
Huntly	6*
Ngaruawahia	6*
Raglan	6*
Taupiri	6*
Onewhero – Tuakau	6*

* plus one or two appointed members (councillors from the respective ward)

Council carried out its last review in 2018 (for the 2019 and 2022 triennial elections), which retained the status quo with some minor boundary modifications in the northern part of the district. Following the [Local Government Commission's consideration of the Council's 2018 proposal](#), it was agreed that a more comprehensive review would be undertaken in the 2019-22 triennium; a particular focus to be on communities of interest in the district reflecting up-to-date population statistics and growth.

Council's decision on [20 May 2021](#) to establish one or more Maaori wards meant that a formal representation review was legislatively required (clause 1(1), Schedule 1A, LEA). That decision was made in light of changes to the LEA to remove the provisions enabling a public poll to determine whether Maaori wards should be established.

Overview of the current representation review project

The Council's representation review this triennium commenced in mid-2020 with introductory briefings with elected members and discussions with each community board. A programme of early community engagement then took place to collate views on communities of interest and representation arrangements in the district. This programme of work is outlined under the [Assessment of Significance and Engagement section](#) below.

Council resolved to retain the First Past the Post electoral system on [20 July 2020](#), which will apply for the 2022 triennial elections.

A number of Council briefings and workshops were held to consider the data from the preliminary community engagement and possible options for representation arrangements:

- November-December 2020 – summary of early engagement data presented to councillors.
- February 2021 – analysis of data on the preliminary engagement presented.
- May 2021 – discussions on the effect of establishing one or more Maaori wards in relation to electoral population.
- 9 June 2021 – initial discussion on options, with a preference indicated for an eight ward structure (seven general and one Maaori) with 13 councillors (11 general and two Maaori).
- 21 June 2021 – draft eight ward option discussed, including boundaries of general wards and their communities of interest. Further discussions with councillors proceeded this briefing.
- 28 June 2021 – discussion on the name of the preferred eight ward option, updated to reflect feedback from councillors.

Staff also discussed community board options with the current community boards during June 2021, which is noted further under the [Options – Community Boards](#) section below. Direction was sought from an elected member working group (comprising Mayor Sanson, Cr Bech and Cr Sedgwick) on the boards' respective recommendations.

Discussions were held with Waikato-Tainui prior to the decision to include Maaori wards on 20 May 2021, where Rukumoana Schaufhausen also spoke to the proposal at that time on behalf of the Kingitanga. Any consideration of a split to the district-wide ward must be made by Maaori, along with the final name. Therefore a number of cluster meetings with maraes around the district are being held during the consultation period.

The LEA requires the Council to resolve its initial proposal by 31 August 2021. It is recommended that this decision is made as soon as possible to enable sufficient time for the public to make submissions and the Council to consider these in deciding on its final proposal.

DISCUSSION AND ANALYSIS OF OPTIONS

3.1 DISCUSSION

Part IA and Schedule IA of the LEA sets out the requirements for a representation arrangements review. Issues that a local authority must consider include:

- a) whether councillors (other than the mayor) are to be elected 'at large' (i.e. by all electors across the district), by two or more wards, or in some cases by a mix of those two options. However, the LEA requires that there is at least one general ward and one Maaori ward;

- b) the proposed number of councillors (general and Maaori) to be elected in each category (i.e. ward and/or mixture of 'at large'/ward – as applicable);
- c) the proposed name and boundaries for each general and Maaori ward;
- d) whether there should be community boards, and if so, the nature of a community and structure of a community board. This includes consideration of:
 - i) whether new community boards should be established;
 - ii) whether existing community boards should be abolished or merged with another community;
 - iii) whether the boundaries for any existing community board should be altered;
 - iv) the number of members of a community board (including the number elected and appointed members);
 - v) whether the elected members of a community board should be elected 'at large' by electors in the community, or by two or more subdivisions, or (where the community board extends over two wards) by the electors of each ward; and
 - vi) the name, boundaries and number of members of each subdivision of a community (if subdivisions are adopted).

The following are key principles in the representation review and must be considered by the Council in deciding on its initial proposal:

- a) communities of interest
- b) effective representation
- c) fair representation (i.e. the '+/- 10% rule')

The [Local Government Commission guidelines](#) provide information to assist councils to resolve an initial proposal in accordance with these principles.

Communities of Interest

The term community of interest is not defined in the LEA. It can mean different things to different people depending on an individual's or group's perspective from time to time. It can include a sense of belonging to a clearly identified area or locality (perceptual), distinctive physical and topographical features, similarities in economic or social activities carried out in the area (functional), similarities in the demographic, socio-economic and/or ethnic characteristics of the residents of a community, a distinctive local history of the area or the role of local iwi.

There is also a political dimension – the ability to represent the interests and reconcile conflicts of the community. For the purpose of the representation review and electoral purposes, a community of interest must be able to be defined as a single geographical area (i.e. have a defined, physical boundary).

The preliminary community engagement identified that a number of people felt connected to more than one community of interest. Indeed for some there were multiple communities of interest including some outside of the district (particularly those communities neighbouring Hamilton or in the northern part of the district).

The online survey indicated the following were key factors in determining communities of interest in the district:

- a) Land use (rural/urban/residential etc);
- b) Activities and shared community services – in particular, sports/recreational and community facilities;
- c) Geography/landscape;
- d) Business and retail services
- e) Social connection with immediate neighbours.

Effective Representation

Once communities of interest that are geographically distinct, and/or communities that spread across the entire district, if any, are identified, Council must then consider how these communities will be most effectively represented (section 19T LEA). Issues to consider include:

- a) can 'like' communities of interest be grouped together to achieve effective representation?
- b) is effective representation best achieved by a ward system or a mixed 'at large'/ward system (noting that there must be at least one general ward and one Maaori ward)?
 - i) if some councillors are to be elected 'at large' - how many councillors would provide effective representation for those communities that spread across the entire district?
 - ii) if some or all councillors are to be elected via wards - how many members for each ward would provide effective representation (i.e. single or multi-member wards)?
- c) should there be community boards and, if so, should these be subdivided to provide the most effective representation for the communities of interest?

The LEA and Commission's guidelines note the following parameters in determining effective representation:

- a) the total number of councillors must be between 5 and 29 (inclusive);
- b) the number of community board members for each board must be between 4 and 12 (inclusive), with at least 4 **and** a majority being elected members;
- c) ward and community board boundaries must coincide with statistical mesh block boundaries;
- d) avoid splitting recognised communities of interest, or grouping two or more communities that have few common interests;
- e) for Maaori ward(s), to have regard to tribal affiliations and Maaori communities;
- f) provide effective accessibility of communities to their representative(s) and enable effective representation by those representative(s).

Fair Representation

Section 19V of the LEA requires that if councillors are to be elected through a ward structure (general or Maaori), then the membership of the wards is required to provide approximate population equality per councillor. That is, all votes are of approximately equal value (referred to as the +/-10% rule) unless there are good reasons (which are prescribed in the LEA) to depart from this requirement. This requirement applies to wards (general and Maaori) and subdivisions of community boards (if any).

In summary, the process to follow when undertaking a representation arrangements review is:

- a) identify the district's communities of interest;
- b) determine the effectiveness of representation by looking at the overall number of councillors, whether they represent the district from wards or by a mixture of 'at large' and wards, and the boundaries of wards.
- c) investigate whether there should be community boards, and if so, the number, boundaries, number of members, whether they should be subdivided etc;
- d) determine that members fairly represent their constituents by ensuring the average population ratio per member is no more than a +/- 10% variance.

Following the early engagement, Council's decision to establish one or more Maaori wards and subsequent discussions at Council briefings and workshops, there is a clear need for amending the current representation arrangements to better reflect the district's changing communities of interest, and ensure these communities are represented effectively and fairly.

Informal preliminary consultation was undertaken via an online survey (between 18 August and 1 October 2020) and stakeholder and community focus groups (held during October and November 2020). Detailed analysis of the preliminary consultation is attached (Attachment 16).

378 people completed the online survey, the focus of which was to gain communities' views on their respective communities of interest. Hardcopies of the survey were also made available at libraries and Council offices. Key findings from the survey were:

- Key factors creating a sense of belonging to one or more communities of interest (as noted above);
- Hamilton and Auckland were the main places where contributors work and do their grocery shopping;
- 36.8% believed the current representation arrangements were not fair and effective; 18.5% believed they were. Notably 44.6% didn't know or didn't express a view.
- 71.8% wanted Council to continue to have community boards as a form of local representation. 42.3% believed community boards should cover smaller, more focussed areas than they currently do.

Stakeholder and community focus groups enabled a more in-depth conversation and activities with representatives across the district. 55 people participated in 7 focus groups located across the district. In summary, the key findings from these focus groups were:

- Problems or obstacles shared by a community, and shared dependence on water resources were factors identifying communities of interest (in addition to those already mentioned).
- Preferred number of councillors was between 14 and 16.

- Preferred number of wards was between 6 and 8.
- Community boards remain popular as a form of local representation.
- Consideration should be given to establishing rural community boards, separate from neighbouring urban towns.

The population of the district is 82,850 (estimated resident population as at 30 June 2020). This comprises 67,700 for the General Electoral Population (GEP) and 15,150 for the Maaori Electoral Population (MEP).

The number of councillors elected by a Maaori ward or wards is set by a formula in the LEA. A ratio is found between the MEP and the total population of the district, this is then multiplied by the number of councillors (i.e. excluding the Mayor). The resulting (rounded) number is the number of councillors that could be elected in Maaori wards. Based on current population estimates (as at 30 June 2020), if the proposed *total* number of councillors for the 2022 elections:

- a) was between 9 and 13 councillors, then two of these councillors would be Maaori ward councillors; or
- b) increased to between 14 to 19 councillors, then three of these councillors would be Maaori ward councillors; or
- c) decreased to between 6 to 8 councillors, then one of these councillors would be a Maaori ward councillor.

The Council's initial proposal must have at least one Maaori ward and one general ward (Schedule 1A, LEA) – i.e. it is not possible to have all councillors elected 'at large', though some can be. The requirement that the average number of resident population to councillors (for wards) should not exceed +/- 10% must also be considered when determining number of wards and number of councillors for each ward.

3.2 OPTIONS – WARDS AND COUNCILLORS

Council has considered the following options at earlier workshops. For each option, a district-wide Maaori ward named Te Takiwaa, with two Maaori ward councillors, is proposed. The two members would jointly represent the 15,150 Maaori electoral population. Given Council decided to establish Maaori wards on 20 May 2021, it was considered best by both councillors and staff to seek views from Maaori stakeholders on the nature and structure of the Maaori ward(s) as part of the initial proposal.

Option 1 – modified status quo (10 general wards (amended to remove MEP and reduce the number of general ward councillors to 11) and one district-wide Maaori ward with two Maaori ward councillors).

Target GEP/councillor to comply with +/-10% = 6,155 (5,539-6770)

Actual range of GEP/councillor = 4,830 – 14,162 (some wards non-compliant)

Refer Attachment 20 (map and population statistics per general ward).

Under this option, 6 of the 10 (general) wards would not comply with the +/-10% rule. Adjusting the general ward boundaries to accommodate the rule would distort communities of interest. *As such, this option is not considered viable.*

Option 2 – (9 general wards with 11 general ward Councillors; one district-wide Maaori ward with two Maaori ward councillors)

Target GEP/councillor to comply with +/-10% = 6,155 (5,539-6,770)

Actual range of GEP/councillor = 5,572 – 6,662 (all wards compliant)

Refer Attachment 21 (map and population statistics per general ward).

This option endeavoured to address the fair and effective representation hurdles for general wards in Option 1 as follows:

- Establish general wards centred around the five largest towns in the district, and Raglan and Tamahere/Hamilton communities of interest, with boundaries of wards expanded to group similar communities of interest and comply with the +/- 10% rule.
- Establish two large general rural wards from the remaining area, providing strong alignment with communities of interest and identity by township/land use. Each rural ward would have 2 councillors to provide effective representation.

This option was not a preferred option due to the number of single councillor wards.

Option 3 – modified Option 2 (8 general wards with 11 general ward Councillors; one district-wide Maaori ward with two Maaori ward councillors).

Target GEP/councillor to comply with +/-10% = 6,155 (5,539-6,770)

Actual range of GEP/councillor = 5,640 – 6,765 (all wards compliant)

Refer Attachment 22 (map and population statistics per general ward).

Variations of Option 2 are feasible to combine some of the wards that share common interests and, in so doing, increase the number of multi-member general wards. Multi-member wards were favoured by participants in the community focus groups. Examples of this option (based on Option 2 with slight boundary adjustments for non-combined general wards) include:

- creating a larger, coastal general rural ward on the west side of the district (coastal issues, hill country with extensive grazing and horticulture); or
- creating a larger inland general rural ward on the east side of the district (impacts/effects of growth in Hamilton, extensive grazing, dairy and horticulture).

This option still retains the high separation by town across the district (as with Option 2). A note on these options is that the Aka Aka area and South Waiuku do pose a disconnection from the rest of the rural ward (by the Waikato River). However, the mesh blocks are contiguous under this option, so this arrangement is considered compliant under the LEA and LGC guidelines.

The Pokeno and West Rural wards are close to the limit for the +/-10% rule, and would not account for projected growth in these areas.

This option was rejected because of a rural/urban voice being mixed, along with not having enough of a margin for growth.

Option 4 (7 general wards with 11 general ward Councillors; one district-wide Maaori ward with two Maaori ward councillors).

Target GEP/councillor to comply with +/-10% = 6,155 (5,539-6,770)

Actual range of GEP/councillor = 5,641 – 6,761 (all wards compliant)

Refer Attachment 23 – (map and population statistics per general ward).

This option best reflects the preferences expressed at the stakeholder and community focus groups to provide fair and effective representation. It is acknowledged that the focus groups took place prior to Council's decision on establishing one or more Maaori wards – as such, the number of viable models available from the focus groups' data is reduced.

Various iterations of this option were discussed with, and between, councillors as part of considering an initial proposal. The key elements of this option as depicted in Attachment 18, in comparison to the current representation arrangements, are:

- reflect population growth across the district since 2018, and in particular in the northern communities.
- combine communities of interest neighbouring Hamilton city given shared interests (e.g. shared services, transport to/from Hamilton for work, school and shopping, impact/effect of growth in Hamilton etc).
- establish a central general ward, combining Ngaruawahia, Taupiri and Huntly as urban river communities.
- 55% of the district's MEP are based in Ngaruawahia and Huntly, who would be represented by the Maaori ward councillors. This results in less general ward councillors being required to provide effective representation for GEP constituents.
- provide for two rural-centred wards on the west and east side of the district. The proposed new west rural general ward – Waerenga-Hukanui – would have two members to reflect the inclusion of Te Kauwhata and ensure fair representation between wards.
- propose ward names to better reflect the current communities of interest represented in those wards.

For the above reasons, this is the recommended option for the Council's initial proposal on its representation arrangements. All wards under this option comply with the +/-10% rule. Some meshblocks have been moved to accommodate the Port Waikato Ward being close to the +/-10% rule.

Option C is the map developed over a week from feedback from Councillors and the preferred option going forward.

Option 5 – (5 general wards with 11 general ward Councillors; one district-wide Maaori ward with two Maaori ward councillors).

Target GEP/councillor to comply with +/-10% = 6,155 (5,539-6,770)

Actual range of GEP/councillor = 5,568 – 6,710 (all wards compliant)

Refer Attachment 24 (map and population statistics per general ward).

Several viable iterations of this option were canvassed in workshops and discussions, the focus being to have an 'anchor' town with neighbouring communities that had common interests. However, the voice of the rural communities is not as (potentially) effectively represented in this option as compared to the others, though is not lost altogether.

The option advocates for multi-member wards over single-member wards, to provide effective representation amongst the different communities in each ward (e.g. provides electors with a choice of representatives to contact on local issues).

This option was not favoured in workshops/discussions because of potential issues with accessibility of representation given the large geographic areas of some wards, and several wards bordered the +/-10% rule so as not to provide an equitable representation model. As such, ward names were not completed.

3.3 OPTIONS – COMMUNITY BOARDS

The preliminary consultation via the online survey and focus groups indicated a strong preference for community boards as a form of local, effective representation in the district. There were mixed views as to whether the boundaries of community boards should expand or narrow, and on the most effective number of elected members for a community board. As noted earlier, some participants in the focus groups considered that rural-focussed community boards would provide more effective representation for the rural communities.

During June 2021, staff sought feedback and views from each of the current community boards on:

- a) The name of community boards;
- b) The number of elected and appointed members to the community boards;
- c) The boundaries of the community boards, and any proposed alterations;
- d) Whether subdivisions of a Board would provide more effective representation of communities of interest.

A summary of the community boards' feedback and recommendations was circulated to the elected member project working group (Mayor Sanson, Cr Bech and Cr Sedgwick) ("PWG") for consideration.

Huntly Community Board

The Board was supportive of boundary adjustments to include additional properties within the Board area as set out in the map in Attachment 9.

No changes to the Board name or number of members were proposed.

Whilst the PWG were supportive of some of the proposed boundary changes they didn't believe that sufficient consultation had been undertaken with residents within the proposed areas, therefore any further boundary alterations should be advocated by the relevant areas as part of the submission process (i.e. if such areas wish to be included in the Huntly Community Board boundaries). Such submissions can then be considered by the Council when determining a final proposal.

Recommendation: To retain the Huntly Community Board, with six elected members and two appointed members.

Refer Attachment 10 (map and population statistics).

Ngaruawahia Community Board

The Board recommended:

- an extension to the current board boundaries to include the new River Terraces subdivision adjoining the golf course; and
- a reduction to the current board boundaries to exclude the area immediately south of the golf course (i.e. entering Horotiu).
- consult with the Horotiu residents as to whether they wished to establish a community committee of their own and retain/extend their targeted rate.

No changes to the Board name or number of members were proposed.

The PWG were supportive of the proposed changes by the Ngaruawahia Community Board. However, once again they were concerned that there was insufficient time to undertake consultation with residents in regard to these changes (refer Attachment 11).

Staff recommend the Board's proposal for River Terraces to be added and the Board area to cease at the golf course. This in effect means the Horotiu area will be removed and the consultation regarding a community committee is outside of this process.

Recommendation: To retain the Ngaruawahia Community Board, with six elected members and two appointed councillors, with the minor boundary changes.

Refer Attachment 12 (map and population statistics).

Onewhero-Tuakau Community Board

The current board area straddles two current wards and encompasses rural communities and the Tuakau township. This matter was considered in the 2018 review, though no changes were made by Council at that time.

An option is for the Board to have subdivisions for these two principal communities of interest – i.e. rural and Tuakau township – with a specified number of elected Board members for each subdivision. Each subdivision would require a name, confirmation of number of elected members compliant with the +/- 10% rule, and defined geographic boundaries.

The elected Board members were split on this proposal – the Tuakau-based members generally supported it, the Onewhero-based members (excluding the chairperson) favoured the status quo if a separate rural community board was not an option but with the inclusion of an additional board member.

The community board supports a name change to reflect their higher populated township being recognised first in the name, i.e. change their name from Onewhero-Tuakau Community Board to Tuakau-Onewhero Community Board.

The PWG have had time to consider this option further and whilst no changes (other than minor boundary changes to reflect the new Tuakau General Ward are recommended in the initial proposal).

There is an option for the Board members to consult with their community to perhaps either consider further the subdivision option or two separate community boards with lower membership numbers, i.e. four (4) members plus one appointed councillor from the general wards (refer Attachment 13). If they receive support from their communities resulting in submissions to the initial proposal Council may consider the change as part of the hearings process.

Recommendation: To change the Community Board name to Tuakau-Onewhero Community Board, with six elected members and two appointed councillors, with the minor boundary changes as reflected in the new Tuakau General Ward boundaries.

Refer Attachment 14 (map and population statistics).

Raglan Community Board

The Board recommended the boundaries of the community board extend to include the rural communities of Makomako, Te Mata and Te Uku (refer Attachment 15) and the following roads:

- extend south-west to include Tukurimu Road, Matahwa Road and Waimaori Road;
- extend south to include Te Papatapu Road and Philips Road;

- extend south-east to include all of Houchen Road and Kawhia Road (to Makomako);
- extend east to include Pond Road (Te Mata), and up to (but not including) Waitetuna Valley Road;
- extend north-east to include all of Okete Road, Hauroto Bay, Checkley and Warren Roads;
- north to Te Akau Landing.

No changes to the Board name or number of members were proposed.

After consideration of the Board's recommendations, the PWG suggest that any boundary alterations should be advocated by the relevant areas/communities as part of the submission process (i.e. if such areas wish to be included in the Raglan Community Board boundaries). Such submissions can then be considered by the Council when determining a final proposal.

Recommendation: To retain the Raglan Community Board, with six elected members and one appointed member, with the current community board boundaries.

Refer Attachment 16 (map and population statistics).

Taupiri Community Board

The Board supported some minor boundary changes to accommodate growth in the area as set out in the attached map – Refer Attachment 17.

No changes to the Board name or number of members were proposed.

After consideration of the Board's recommendations, the PWG suggest that any boundary alterations should be advocated by the relevant areas/communities as part of the submission process

Recommendation: To retain the Taupiri Community Board, with six elected members and two appointed members, with the current boundaries of the community board.

Refer Attachment 18 (map and population statistics).

3.4 INITIAL PROPOSAL

Taking account of the above options, and discussions with councillors at briefings on 21 and 28 June 2021, an initial proposal is recommended based on the following:

- 13 councillors, comprising 11 general ward councillors and 2 Maaori ward councillors, together with a Mayor (elected 'at large').
- One (1) district-wide Maaori ward, the boundaries of which align with the district's boundaries and the name of the ward to be Te Takiwaa Maaori Ward.
- Seven (7) general wards, reduced from the current ten (10) wards, for the reasons outlined in Option 4 above. The proposed boundaries of the seven (7) general wards are detailed in Attachment 23.
- The 7 general wards to be named (as shown on Attachment 23):
 - Tamahere-Newcastle General Ward, to be represented by three (3) general ward councillors;
 - Whaingaroa General Ward, to be represented by one (1) general ward councillor;
 - Central General Ward, to be represented by two (2) general ward councillors;

- iv) Waerenga-Hukanui General Ward, to be represented by two (2) general ward councillors;
 - v) Port Waikato General Ward, to be represented by one (1) general ward councillor;
 - vi) Tuakau General Ward, to be represented by one (1) general ward councillor; and
 - vii) Pokeno-Hunua General Ward, to be represented by one (1) general ward councillor.
- e) Retention of five (5) community boards subject to the following changes:
- i) no boundary alterations for the Huntly and Taupiri Community Board areas.
 - ii) minor boundary alterations for Ngaruawahia Community Board to reflect changes to the communities of interest in these areas and better align with the urban centres; and
 - iii) no boundary alterations for Raglan Community Board, retaining the focus on the urban centre.
 - iv) change the name of the Onewhero-Tuakau Community Board to the Tuakau-Onewhero Community Board.
 - v) minor boundary changes to the Tuakau-Onewhero Community Board to reflect the Ward boundary changes due to growth of the urban area.

Accordingly, the initial proposal as set out in the [Recommendation](#) section above is recommended to Council for approval.

4. CONSIDERATIONS

4.1 FINANCIAL

There are no material financial considerations for the matters in this report. It is noted that the proposed minor boundary alterations to some of the current community boards would result in an increase or decrease in the targeted rate for the respective boards catchments.

The current targeted rate for community boards is \$18.75 per property per annum. However, a review of this funding is underway at present and full consultation of any changes would be made with affected residents during that time.

The costs to undertake the representation review project falls within current operational budgets.

4.2 LEGAL

The Council must comply with the provisions of the LEA and Local Government Act 2002, along with the Local Government Commission's Guidelines, when deciding on its initial proposal.

The timeframe for the representation review, including the decision by the Council on its initial proposal and period for submissions, is set out in the LEA. A summary of the next steps to comply with this timeframe is considered in section 5 below.

The Council's Electoral Officer, Dale Ofoske, has reviewed the report and recommended initial proposal to ensure it complies with legislation.

4.3 ASSESSMENT OF SIGNIFICANCE AND ENGAGEMENT POLICY AND OF EXTERNAL STAKEHOLDERS

The level of significance is considered to be medium under the Council's Significance & Engagement Policy. While all of the communities in the district are affected by the representation review, they have the opportunity to send their submissions on the initial proposal and changes can be made by Council in determining a final proposal.

A programme of preliminary engagement on the representation review took place between 18 August and 26 November 2020, under the name 'Reshape Waikato'. This comprised:

- f) an online community survey on Shape Waikato between 18 August 2020 and 1 October 2020. 378 people completed the survey.
- g) four stakeholders' focus group sessions held between 21 October and 29 October 2020, with 36 participants representing community boards/committees, business, community organisations, and service providers.
- h) three community focus groups sessions held between 12 and 26 November 2020, with 19 participants attending. Participants comprised randomly selected electors from the electoral roll and individuals who completed the online survey.

The focus groups provided informed feedback based on a number of activities and discussions on representation models. A detailed analysis of this preliminary engagement, including data analysed, is set out in Attachment 20. A summary was noted in the [Discussion](#) section of this report.

In addition, the representation review was also discussed with Waikato Tainui at the Co-Governance Joint Committee hui on 14 October 2020 and 14 April 2021; the focus being on Maaori wards and representation.

As noted, there have also been focussed discussions with each of the community boards – both at the commencement of the review and more recently on options for the initial proposal.

Highest levels of engagement	Inform	Consult	Involve	Collaborate	Empower
	<input type="checkbox"/>	<input checked="" type="checkbox"/>	<input type="checkbox"/>	<input type="checkbox"/>	<input type="checkbox"/>
<i>Tick the appropriate box/boxes and specify what it involves by providing a brief explanation of the tools which will be used to engage (refer to the project engagement plan if applicable).</i>	<p>The Council is required to consult with the public on its initial proposal under the LEA.</p> <p>Stakeholders including Community Boards and Committees, participants in the preliminary engagement will be contacted directly.</p> <p>All consultation material will be available to the public in council offices and libraries as well as online from 14 July 2021 until 20 August 2021.</p>				

State below which external stakeholders have been or will be engaged with:

Planned	In Progress	Complete	
	✓		Internal
	✓		Community Boards/Community Committees
	✓		Waikato-Tainui/Local iwi
	✓		Households
	✓		Business
			Other Please Specify

5. NEXT ACTIONS

Council, at its extraordinary meeting on 7 July 2021 is to resolve an initial proposal of its review of representation arrangements for public consultation.

The formal consultative process commences with a public notice of the initial proposal on 14 July 2021, which provides the ability for the public to make submissions on the initial proposal during the period of 14 July 2021 to 20 August 2021.

The consultative process will include:

- a Statement of Proposal on the initial proposal (explanation of the submission process, outline the proposal and rationale for it including maps to show proposed changes and a Q&A section);
- formal submission form (including online option)
- detailed information of the proposed changes available to people living in areas affected by the boundary changes;
- email to key stakeholders including community board and committee members, participants in the preliminary consultation
- consultation launch media release;
- email address for submissions;
- social media postings;
- monitoring, and where necessary, responding to social media and mainstream media.

The Statement of Proposal and formal submission documents will be available online and in hardcopy at Council's libraries and offices.

Any submissions received over the submission period will need to be considered by Council on 9 September 2021, with deliberations on 14 September, before a final proposal is resolved by Council 23 September 2021.

In summary, and to comply with the provisions of the LEA:

Council resolves initial proposal	7 July 2021	(section 19H LEA)
Public notice of initial proposal	14 July 2021	(section 19M LEA)
Public submission period	14 July to 20 August 2021	(section 19M LEA)
Submissions heard	9 September 2021	(section 19M LEA)
Council resolution of final proposal	23 September 2021	(section 19N LEA)
Public notice of final proposal	29 September 2021	(section 19N LEA)
Public appeals/objection period on final proposal	29 September 2021 to 3 November 2021	(section 19N LEA)
Forward material to Local Government Commission (if appeals or objections received)	17 November 2021	(section 19Q LEA)
Determination by Local Government Commission	Before 11 April 2022	(section 19R LEA)

6. CONCLUSION

Council is undertaking a review of its representation arrangements in accordance with the Local Electoral Act 2001, as recommended in the Local Government Commission's determination following the 2018 proposal and as required following the establishment of one or more Maaori wards at the Council meeting on 20 May 2021.

Council already resolved to retain the FPP electoral system.

The current representation arrangements are no longer a viable option for the 2022 elections and beyond, given the population growth in the district, changes to communities of interest and the establishment of one or more Maaori wards. As part of the initial proposal, Council proposes to:

- retain 13 councillors elected from seven (7) general wards and one district-wide Maaori ward, along with the mayor elected at large
- retain five (5) community boards with the one name change for the Tuakau-Onewhero Community Board and the same number of elected members (with with some minor boundary alterations for the Ngaruawahia and Tuakau-Onewhero community boardscommunity boards)

Consultation will open on the initial proposal on 14 July 2021 and close 20 August 2021. A hearing on the initial proposal has been set for 9 September 2021. The final proposal will be determined at a Council meeting in mid/late September 2021 and notified on 30 September 2021.

The results of the review will apply to the 2022 triennial local government election.

7. ATTACHMENTS

Attachment 1 – Map of proposed Te Takiwaa Maaori Ward

Attachment 2 – Map of proposed Central General Ward

Attachment 3 – Map of proposed Pokeno-Hunua General Ward

Attachment 4 – Map of proposed Port Waikato General Ward

Attachment 5 – Map of proposed Tamahere-Newcastle General Ward

Attachment 6 – Map of proposed Tuakau General Ward

Attachment 7 – Map of proposed Waerenga-Hukanui General Ward

Attachment 8 – Map of proposed Whaingaroa General Ward

Attachments 9-18 (To be circulated under separate cover)

Attachment 19 – Reshape Waikato survey and focus group data analysis (February 2021)

Attachment 20 – Map and population statistics for Option 1 (10 general wards)

Attachment 21 – Map and population statistics for Option 2 (9 general wards)

Attachment 22 – Map and population statistics for Option 3 (8 general wards)

Attachment 23 – Map and population statistics for Option 4 (7 general wards) – recommended option.

Attachment 24 – Map and population statistics for Option 5 (5 general wards)

Attachments 9-18 (To be circulated under separate cover)

Attachment 9 – Map of changes recommended by the Huntly Community Board

Attachment 10 – Map of proposed Huntly Community Board area

Attachment 11 – Map of proposed Ngaruawahia Community Board area

Attachment 12 – Map of changes recommended by the Ngaruawahia Community Board

Attachment 13 – Map of proposed Tuakau-Onewhero Community Board area

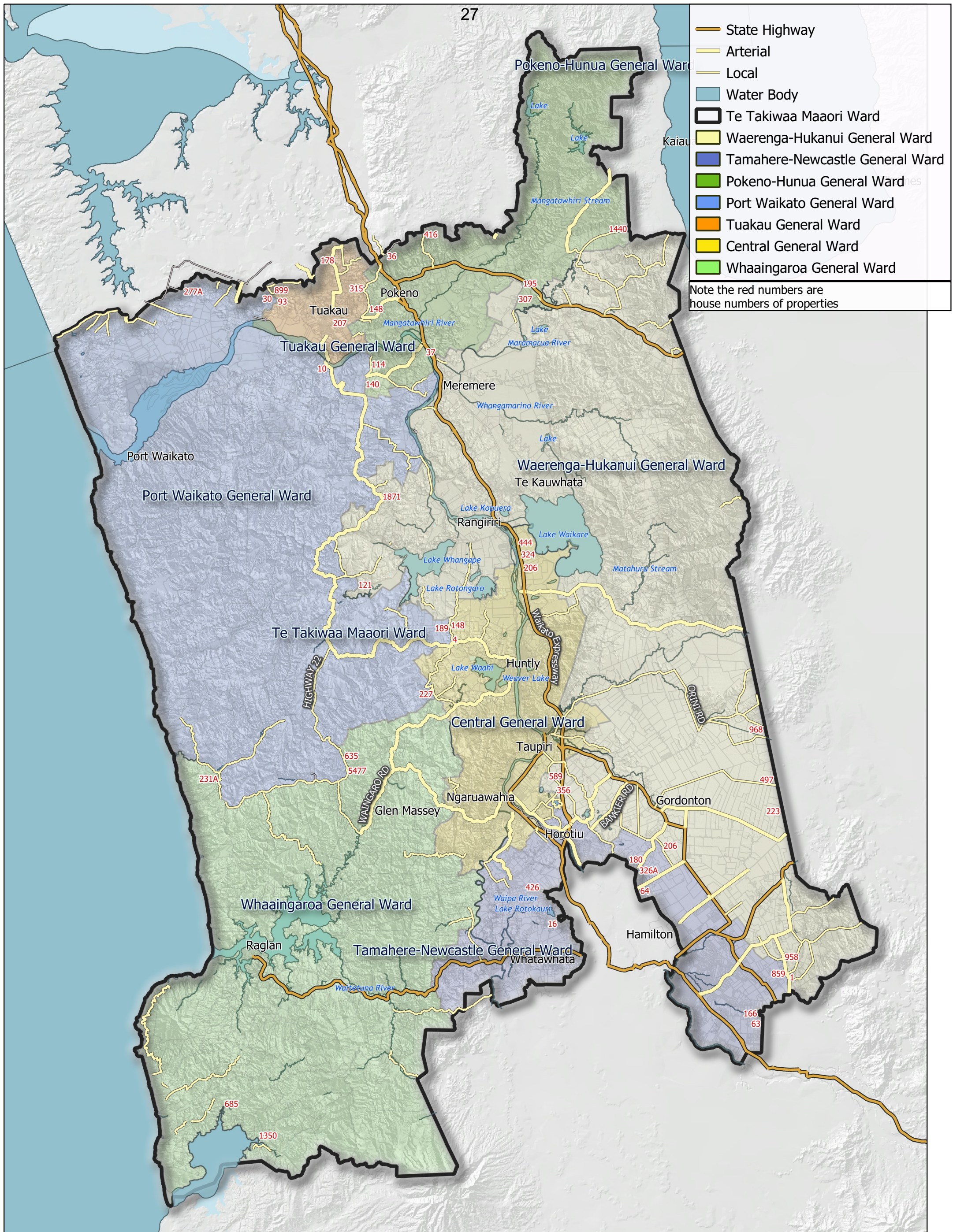
Attachment 14 – Map of alternative option for Tuakau-Onewhero Community Board(s)

Attachment 15 – Map of changes recommended by the Raglan Community Board area

Attachment 16 – Map of proposed Raglan Community Board area

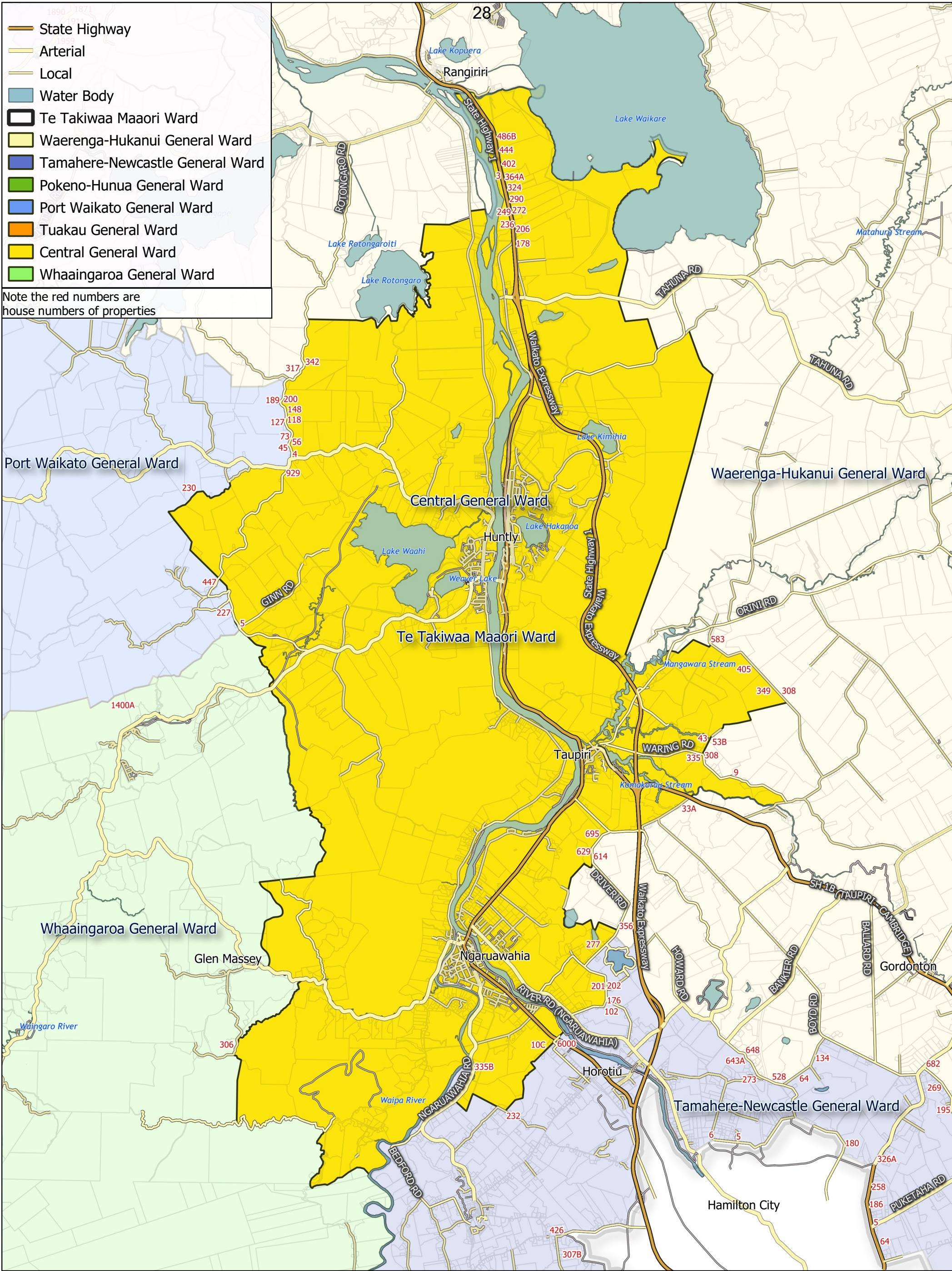
Attachment 17 – Map of changes recommended by the Taupiri Community Board



Attachment 18 - Map of proposed Taupiri Community Board area



- State Highway
- Arterial
- Local
- Water Body
- Te Takiwaa Maori Ward
- Waerenga-Hukanui General Ward
- Tamahere-Newcastle General Ward
- Pokeno-Hunua General Ward
- Port Waikato General Ward
- Tuakau General Ward
- Central General Ward
- Whaingaroa General Ward

Note the red numbers are house numbers of properties

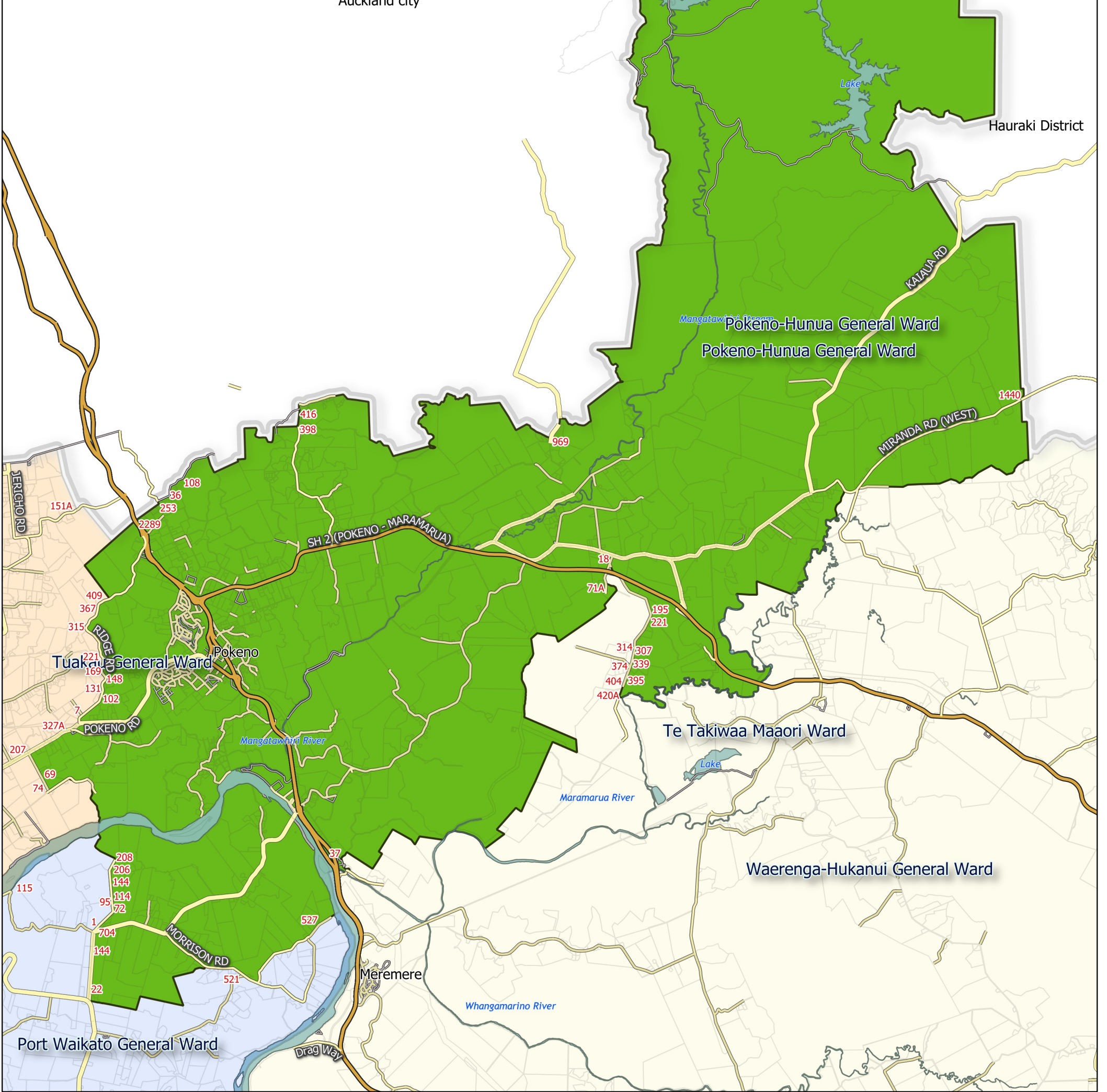


-  State Highway
-  Arterial
-  Local
-  Water Body
-  Te Takiwaa Maori Ward
-  Waerenga-Hukanui General Ward
-  Tamahere-Newcastle General Ward
-  Pokeno-Hunua General Ward
-  Port Waikato General Ward
-  Tuakau General Ward
-  Central General Ward
-  Whaaingaroa General Ward

Note the red numbers are house numbers of properties

Auckland city

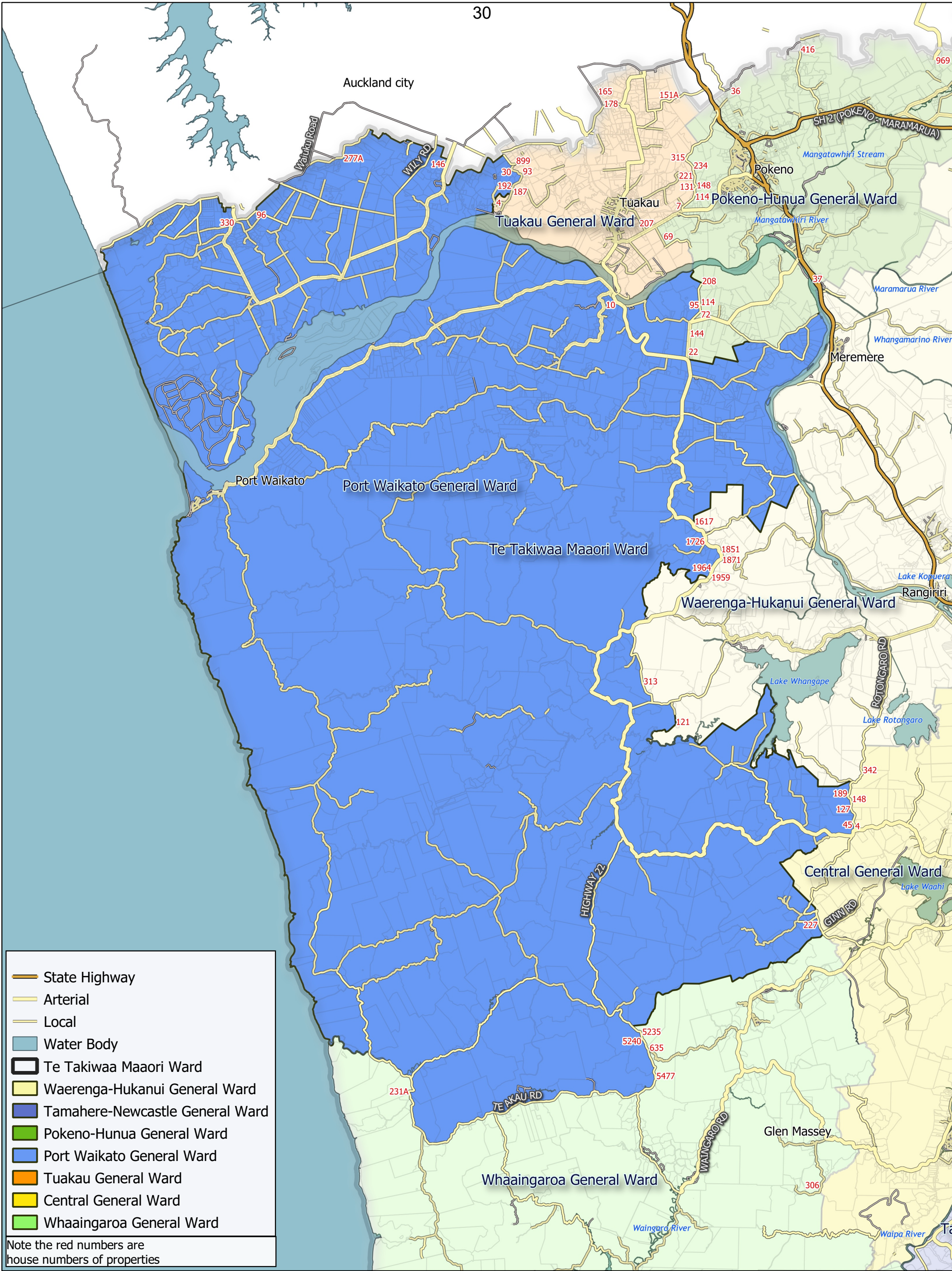
Hauraki District



Pokeno-Hunua General Ward

Business Intelligence
Created By: Admin
Created For:
Date Created:
2021-07-03
Projection: NZTM
GD2000
Ref: Representation
Review 2021

Copyright © Waikato
District Council
Cadastre Boundaries
LINZ CC-BY
Stats NZ CC-BY



-  State Highway
-  Arterial
-  Local
-  Water Body
-  Te Takiwaa Maaori Ward
-  Waerenga-Hukanui General Ward
-  Tamahere-Newcastle General Ward
-  Pokeno-Hunua General Ward
-  Port Waikato General Ward
-  Tuakau General Ward
-  Central General Ward
-  Whaingaroa General Ward

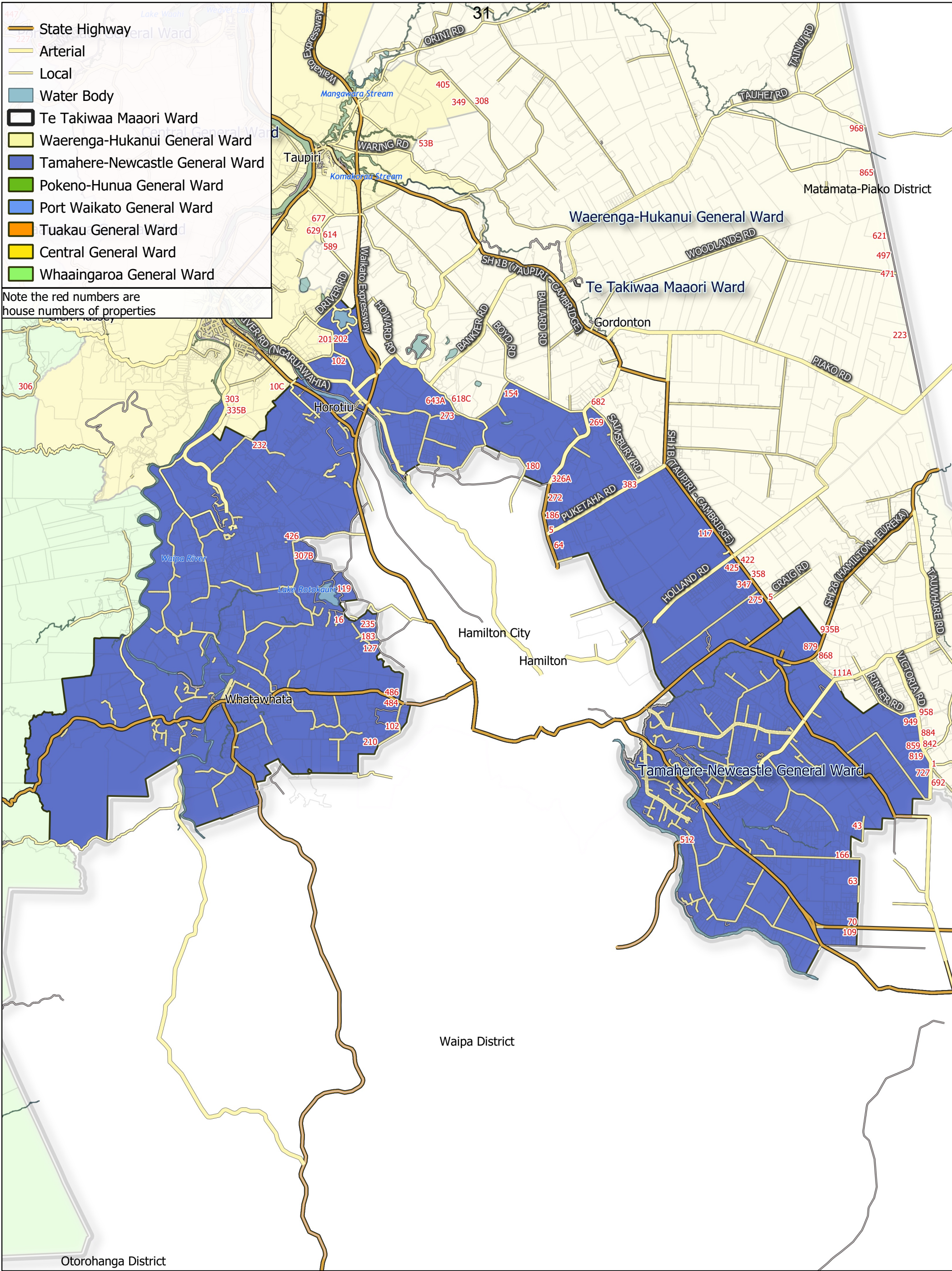
Note the red numbers are house numbers of properties



Port Waikato General Ward

Business Intelligence
 Created By: Admin
 Created For:
 Date Created:
 2021-07-03
 Projection: NZTM
 GD2000
 Ref: Representation
 Review 2021

Copyright © Waikato
 District Council
 Cadastre Boundaries
 LINZ CC-BY
 Stats NZ CC-BY



- State Highway
- Arterial
- Local
- Water Body
- Te Takiwaa Maaori Ward
- Waerenga-Hukanui General Ward
- Tamahere-Newcastle General Ward
- Pokeno-Hunua General Ward
- Port Waikato General Ward
- Tuakau General Ward
- Central General Ward
- Whaingaroa General Ward

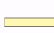







Note the red numbers are house numbers of properties



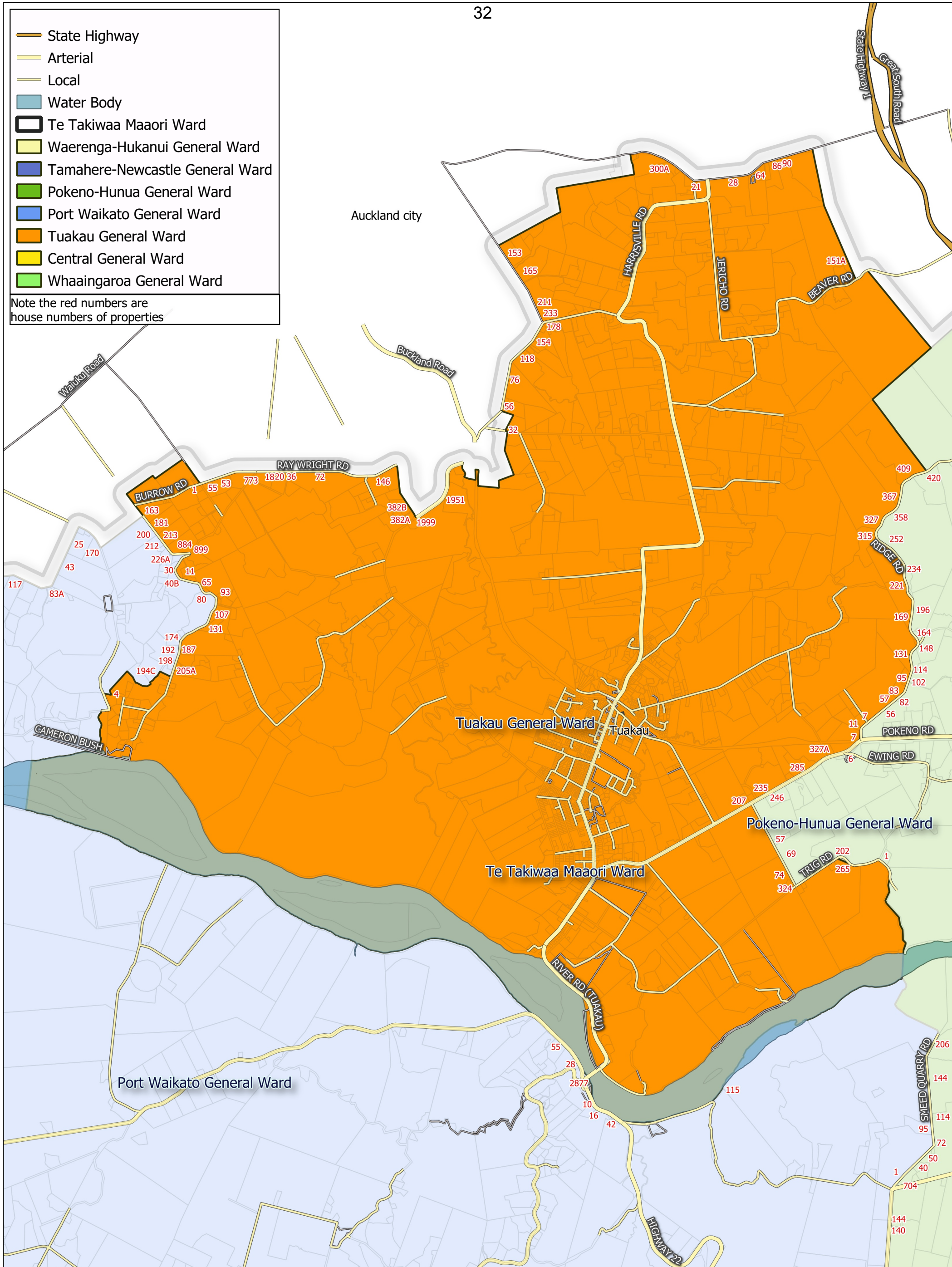
Tamahere-Newcastle General Ward

Business Intelligence
Created By: Admin
Created For:
Date Created:
2021-07-03
Projection: NZTM
GD2000
Ref: Representation
Review 2021

Copyright © Waikato
District Council
Cadastre Boundaries
LINZ CC-BY
Stats NZ CC-BY

-  State Highway
-  Arterial
-  Local
-  Water Body
-  Te Takiwaa Maaori Ward
-  Waerenga-Hukanui General Ward
-  Tamahere-Newcastle General Ward
-  Pokeno-Hunua General Ward
-  Port Waikato General Ward
-  Tuakau General Ward
-  Central General Ward
-  Whaaingarua General Ward

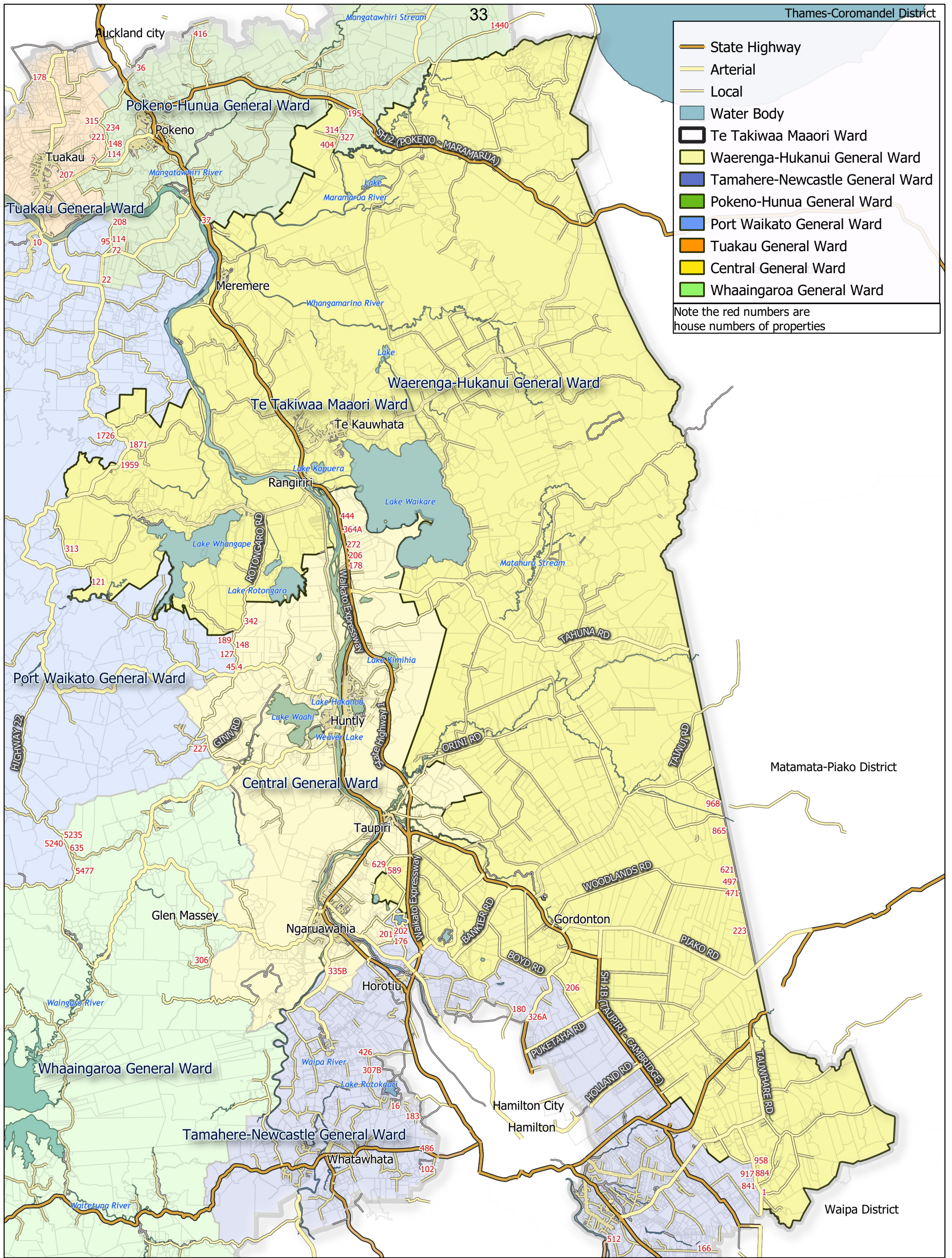
Note the red numbers are house numbers of properties

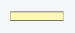
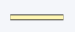



Tuakau General Ward

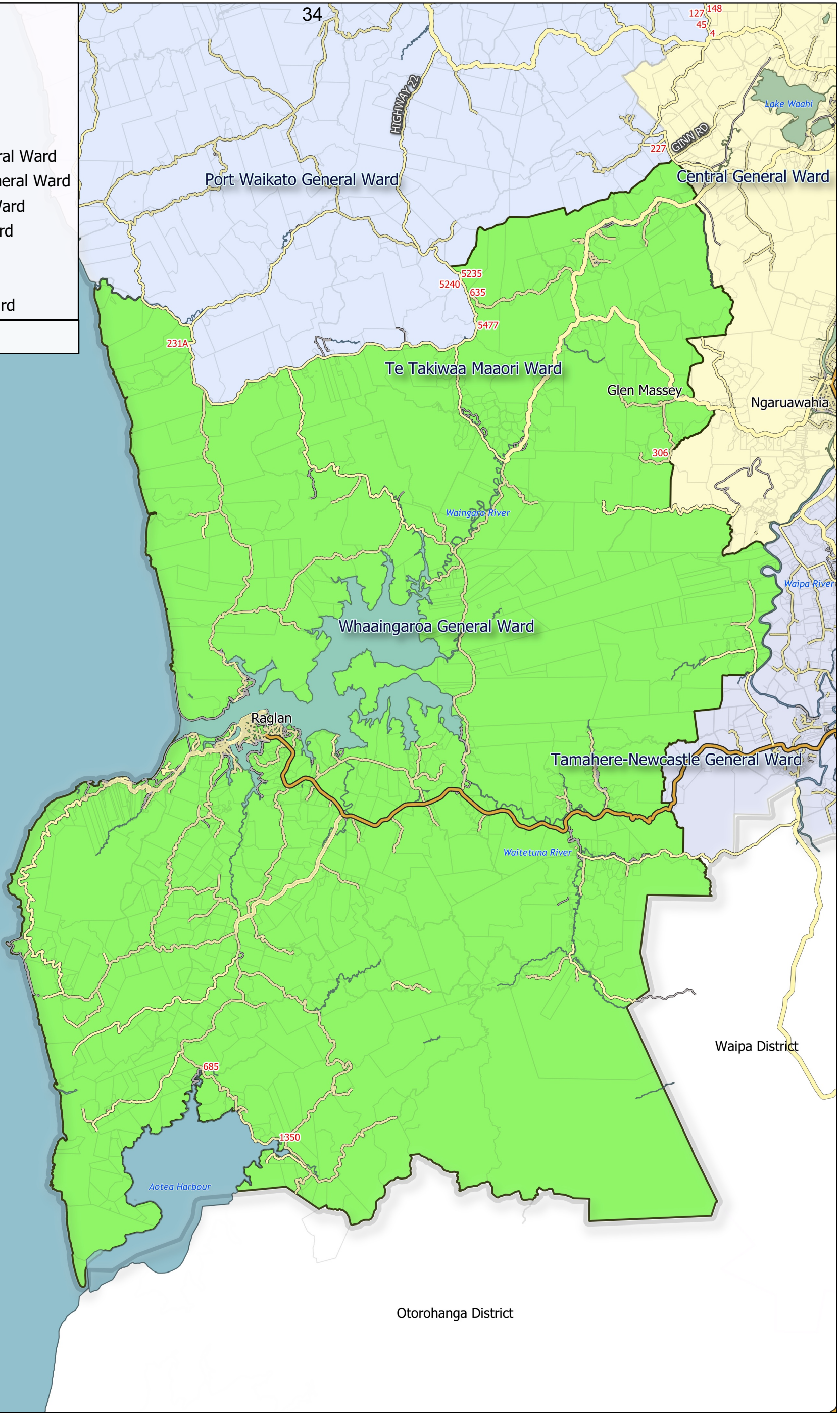
Business Intelligence
 Created By: Admin
 Created For:
 Date Created:
 2021-07-03
 Projection: NZTM
 GD2000
 Ref: Representation
 Review 2021

Copyright © Waikato
 District Council
 Cadastre Boundaries
 LINZ CC-BY
 Stats NZ CC-BY



-  State Highway
-  Arterial
-  Local
-  Water Body
-  Te Takiwaa Maaori Ward
-  Waerenga-Hukanui General Ward
-  Tamahere-Newcastle General Ward
-  Pokeno-Hunua General Ward
-  Port Waikato General Ward
-  Tuakau General Ward
-  Central General Ward
-  Whaaingaroa General Ward

Note the red numbers are house numbers of properties



Whaaingaroa General Ward

Business Intelligence
Created By: Admin
Created For:
Date Created:
2021-07-03
Projection: NZTM
GD2000
Ref: Representation
Review 2021

Copyright © Waikato
District Council
Cadastre Boundaries
LINZ CC-BY
Stats NZ CC-BY

Reshape Waikato survey and focus group data analysis

Elected Members Workshop - February 2021



1. Introduction
2. Summary of the key findings
3. Survey analysis
4. Stakeholders focus groups analysis
5. Community focus groups analysis
6. Map boundaries
7. Conclusion and recommendations
8. Attachments

I Introduction

Council is required by the Local Electoral Act 2001 (LEA) to undertake a review of its representation arrangements at least once every six years. The goal of this representation review process is to ensure that local authorities provide fair and effective representation for people and communities in their authority areas. As part of this process, Council needs to make important decisions regarding the number of wards and community boards within the District as well as the location of their geographical boundaries. The number of Councillors and elected community board members are also up for review. Research of community representation preferences and community engagement are key in guiding this process to achieve better outcomes for the communities that live in the District.

Reshape Waikato is the name given to the 2020/2021 representation review process at the Waikato District Council. This report summarises the findings of three engagement strategies that were carried out by the Reshape Waikato project team between 18 August 2020 and 26 November 2020. The three strategies were as follows:

1. Community Survey
2. Stakeholder Focus Groups
3. Community Focus Groups

The Reshape Waikato project team initially identified an intrinsic tension between broad but shallow public engagement (general consultation or engagement) and narrow but in-depth public engagement (targeted consultation or engagement). The team opted for covering both ends of the spectrum with an additional focus on the narrow, in-depth, dimension of consultation. The team developed three different approaches to public engagement.

The first engagement strategy was a community survey. The goal of the survey was to get a first, broad, understanding of our communities' views. This represented the broad, but shallow, end of the public engagement spectrum. Information was provided through Councils online consultation site "Shape Waikato", and hardcopy material was distributed to all Council offices and libraries. Participation in the survey was based on self-selection and no interaction with the contributors occurred.

The second and third engagement strategies involved focus group sessions. The goal of the focus group sessions was to gain numerically narrower, but much more reasoned, input from the public. Focus group sessions were divided into two streams.

- The first stream was the "stakeholders focus groups". In these focus groups, categories of stakeholders were identified: community boards/committees members, businesses (small and big), community organisations and service providers (schools, health care, etc.). When multiple stakeholders belonged to a same category and no relevant criteria existed, random selection was used to select participants. This was mainly the case with small businesses and schools because while there were not many community organisations and big businesses in some areas, there were usually many schools and small businesses. A more detailed explanation of the selection process can be found in the relevant sections of each engagement strategies in this report.
- The second stream of focus group sessions involved a mix of randomly selected members of the public who were contacted using the electoral roll data and members of the public who participated in the survey.

In both type of sessions, balanced educational material on the representation arrangements that had been reviewed by the Mayor and Councillors Bech and Sedgwick was presented to the participants. Participants engaged in comprehensive and small group discussions before engaging in a number of

activities and answering a set of questions. There were seven sessions and each session lasted about two hours.

This report offers a description and analysis of the information collected through these three engagement strategies before offering some discussions and indicative conclusions that should guide the development of an initial proposal by the Council.

2 Summary of the key findings

Based on the project team's pre-engagement strategy, the following views and preferences have been identified:

- There is a need for amending current representation arrangements (which is in line with the Local Government Commission recommendations from the Council's previous representation review).
- The preferred number of councillors was between 14 and 16.
- The preferred number of wards was between 6 and 8 (with a possible option of having some councillors elected at large).
- Community Boards are popular forms of local representation and the area they cover could be increased.
- Some consideration should be given to the establishment of rural community boards.

3 Survey analysis

- Introduction

The survey was the first step in the Reshape Waikato project team's early engagement strategy. The rationale behind the survey was to retrieve a numerically high and quantifiable set of data. This approach allowed us to reach a broad set of residents but the trade-offs of this approach were a) self-selection biases and b) a potential lack of in-depth, well-reasoned, answers and data.

- Methodology and number of respondents

An online survey was posted on Shape Waikato on 18 August 2020 and closed on 1 October 2020. The survey was open to anyone to respond to and we received 394 contributions (378 contributors). There were seventeen multiple choice questions, with, when relevant, space for comments and/or extra explanation to capture the thoughts of the responder. The survey was advertised through social media, and through Council's website. Hardcopies were made available at libraries and Council offices.

There was no mechanism in place to control the contributors' identity and it is, therefore, possible that a small number of responses came from a) the same people who may have done the survey twice and/or b) people who do not live/own property in the District. There was some evidence from the responses of a couple of cases of both a) and b).

- Demographic information about the respondents (questions 1; 15-17)

The majority (38.32%) of contributions came from people living in a locality that was not listed in the survey (the key localities were identified and included but it was preferable not to list all localities in the District to avoid a fragmentation of the data). About a quarter of the contributions came from localities in the Northern part of the District: Tuakau (13.45%), Pokeno (6.09%), Port Waikato (4.57%), and Mercer (1.27%).

Other significant response rates included Ngaruawahia (6.85%) and Tamahere (6.85%), Raglan (5.84%), and Huntly (5.33%).

37.31% of contributors were in the 45-60 age group, 29.70% in the 30-45 age group, and 20.05% in the 60-75 age group. 65.48% identified as New Zealand Europeans, 26.14% identified as Maaori, and the remainder of the contributors were part of other ethnic groups.

Finally, 64.21% of the contributors were female, 32.49% were male, and 3.30% preferred not to disclose that information.

- Respondents' travel patterns (questions 2-4)

Most respondents (27.66%) work at a place that was not listed in the survey. Hamilton (18.02%) and Auckland (17.51%) are the main places where the contributors work and 11.17% responded "within 5km of where you live".

Again, most contributors (31.22%) go grocery shopping to a place that was not listed in the survey. The rest of the people tend to go to Hamilton (28.43%), Auckland (14.97%), Huntly (6.35%), and Ngaruawahia (4.57%).

When it comes to socialising, contributors mainly socialise in Hamilton (27.16%), 17.77% socialise in Auckland, and 15.99% in a place that was not listed in the survey. Tuakau (6.85%) and Raglan (6.35%) also appeared to be popular places for socialising.

- Communities of interests and sense of belonging (5-6)

The following factors were the five most important in relation to the contributors' sense of belonging (contributors could select up to five): use of land (72.08%), activities and shared community services ((56.85%) in particular sports/recreational and community facilities (more than half the contributors mentioned these two), geography/landscape (53.30%), business and retail services (44.42%), and social connection with immediate neighbours (41.12%).

- Respondents' sentiment about the current representation arrangements (7-9)

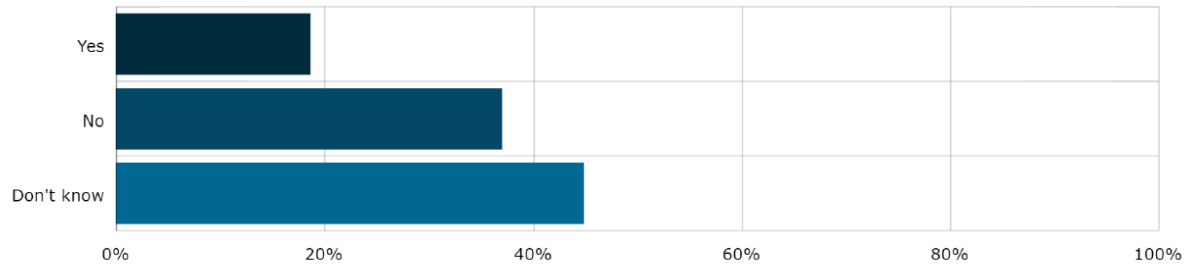
When asked if they felt that the current representation arrangements were fair and effective, 44.67% of the respondents replied that they did not know. 36.80% answered "no" and 18.53% answered "yes". It is unclear from the information provided in the responses whether or not the role of Maangai Maaori at Council is well understood.

The reasons given for being dissatisfied with the current arrangements mainly related to the lack of diversity of the current elected representatives. Comments about Maaori and rural underrepresentation on Council were specifically referred to.

The Northern area of the District also appeared to express more discontent about their representation. Again, from the information provided in the responses it is unclear whether or not the respondents had a clear idea of the role of Maangai Maaori at Council, or how the ward systems are in part dictated by population densities causing rural communities and urban communities to be grouped together.

7. Do you feel the current representation arrangements are fair and effective? Required

Multiple Choice | Skipped: 0 | Answered: 394 (100%)

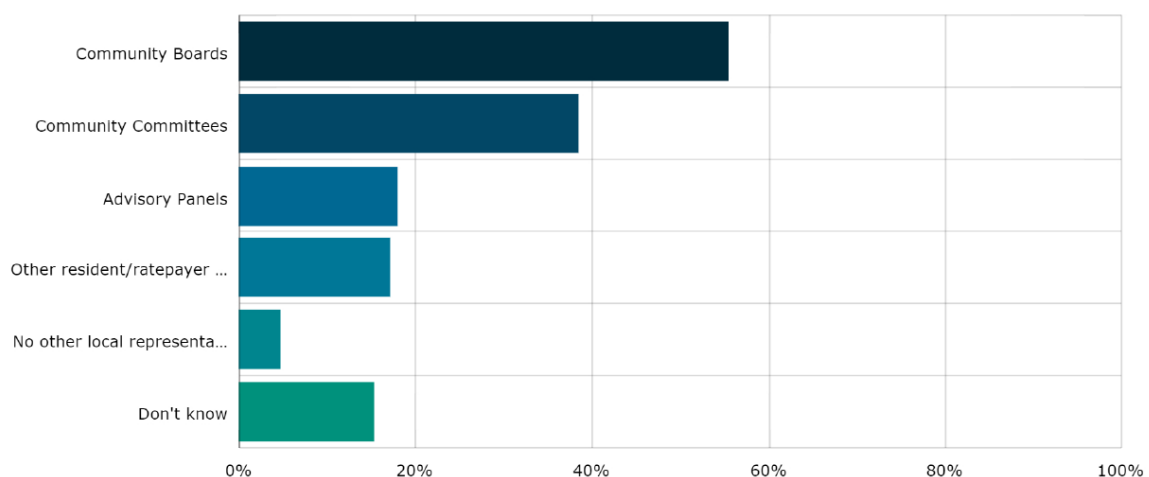


- Respondents' sentiment about alternative forms of local representation (10-14)

The contributors' preferred form of local representation were community boards (55.33%) and 71.83% said that council should continue to have community boards. 19.54% of contributors did not know if the Waikato District should keep community boards and 8.63% believe that the District should not have community boards. Those who didn't support community boards queried their (cost) effectiveness.

10. Other than the elected Council, what is your preferred option(s) for representation on local issues (i.e. issues in the District)? Select one or more of the following options: Required

Multiple Choice | Skipped: 0 | Answered: 394 (100%)



Furthermore, 42.25% said that community boards should cover a smaller area (be more focused) than they currently do and 20.07% said they should cover a larger area.

Besides community boards, 38.32% of contributors preferred community committees (38.32%) and the rest favoured other types of local informal representation such as advisory panels (17.77%) and/or resident/ratepayer organisations (17.01%).¹

- Discussion and conclusion

A certain sentiment of dissatisfaction with the current arrangements emerged from the survey. Lack of representativeness and inefficiency were common themes raised by the contributors. Two important things should, however, be noted:

- a) The lack of representativeness could have been accentuated by the demographic characteristics of the contributors (e.g high participation from Maaori and women). Some contributors, for example, were dissatisfied with the lack of Maaori representation and made the case for the establishment of Maaori wards.
- b) The sentiment of dissatisfaction expressed was not always related to representation arrangements that are the subject of the initial proposal (e.g. decisions regarding the electoral system and Maaori wards have already been made by Council).

Nothing unexpected arose from the survey regarding communities of interests and travel patterns. The focus group sessions offer a more valuable insight into travel patterns.

4 Stakeholders focus groups analysis

- Introduction

The stakeholders focus group sessions were the second step in the Reshape Waikato project team's early engagement strategy. The rationale behind these sessions was to engage with a smaller sample of the District's population but engage in more in-depth conversations and activities to collect well-informed, more qualitative, data. This approach allowed us to ensure that participants made considered contributions but the trade-off of this approach was the lower number of people participating (compared to an online survey). This represented the numerically narrow, but in-depth, end of the public engagement spectrum.

- Methodology and number of respondents

The first stream of focus group sessions was the "stakeholders focus groups". In these focus groups, relevant categories of stakeholders were identified: community boards and community committee members, businesses (small and big), community organisations, and service providers (schools, health care, etc.). The stakeholders were identified by using Council's internal contact databases and internet searches.

When multiple stakeholders belonged to a same category and no relevant criteria existed for selection, random selection was used to choose the participants. This was the case with small businesses and schools only.

¹ Respondents could choose more than one option.

A shortlist of contacts was established and three areas (North (From the northern border to Mercer); Centre (from Meremere to Taupiri); South (everything south of Taupiri)) were created for logistical purpose. There were between 49 and 54 potential participants in each area. Businesses represented approximately 40% of the initial list.

Participants were contacted by members of the project team (mostly by phone) and four stakeholder focus group sessions were held in the District with interested stakeholders between 21 October 2020 and 29 October 2020. There were 36 participants and the dates and locations were as follow:

- Wednesday 21 October in Huntly
- Thursday 22 October in Te Kowhai
- Wednesday 28 October in Huntly
- Thursday 29 October in Pokeno

- Communities of interest and sense of belonging

Most of the responses to the question regarding communities of interests led to expected answers: dependence on shared facilities and shared social/recreational spaces were the main factors leading to a sense of belonging. Shared transport/commuting patterns also played an important role in defining communities of interests as well as the feeling of living in a rural/residential/lifestyle area.

A couple of other interesting factors were also highlighted:

- Problems or obstacles that are shared by a community (such as crime or unemployment) can lead to a feeling of belonging to a shared community.
- Shared dependence on water resources can also be a factor in communities of interest.

- Number of councillors

The average preferred number of councillors was 14 councillors. The minimum was 8 and the maximum was 22 councillors. The most common was 10 councillors. It should be noted that a few participants explained that the number of councillors is directly related to the number (and delegations) of community boards. More community boards with more delegations would require less councillors. This approach seemed to be preferred by some participants during the discussions.

- Ward structures and boundaries

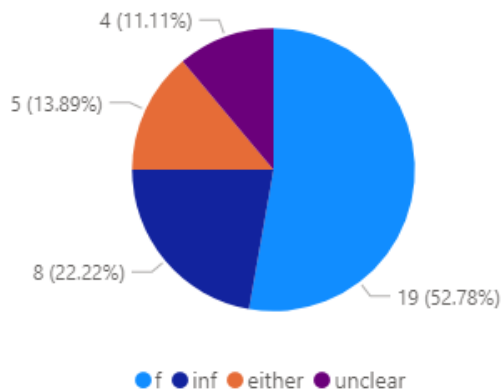
The average number of wards was 6.44 when people were asked to draw boundaries between the wards. The minimum was 4 and the maximum was 12 wards. The most common was 6 wards.

- Community boards and alternative local representation arrangements

Feedback indicated that community boards are popular representation arrangements. It should be noted, however, that this could be due to the selection process and demographics of these stakeholder's sessions as many community board members came to the sessions.

There was a slight preference among participants for formal local representation arrangements such as community boards instead of informal arrangements such as community committees (52.78%). There was no clear direction as to whether community boards should cover larger, smaller, or the same areas as they currently do, or should have more or less elected community members although it was suggested that having uneven number of Board members would be preferred to avoid 'even votes'.

Formal - Q4



5 Community focus groups analysis

- Introduction

The community focus group sessions were the third step in the Reshape Waikato project team's early engagement strategy. The rationale behind these sessions was to engage with a smaller sample of the District's population but engage in more in-depth conversations and activities to collect well-informed, more qualitative, data. This approach allowed us to ensure that participants made considered contributions but the trade-off of this approach was the lower number of people participating. This represented the numerically narrow, but in-depth, end of the public engagement spectrum. As explained in the next section, the difference between this third strategy and the second one, relates to the selection method for the participants.

- Methodology and number of respondents

The second stream of focus group sessions was the “community focus groups”. In these focus groups, 393 invitation letters were sent to semi-randomly selected members from the public (the only criteria applied to the selection process was to ensure a balance between rural and urban and Maaori representation). People who completed to community survey were also invited by email. 19 participants attended which represent a response rate of 4.83%.

- Thursday 12 of November in Ngaruawahia
- Thursday 19 of November in Pokeno Thursday 26 of November in Huntly

- Communities of interest and sense of belonging

Most of the responses to the question regarding communities of interests led to expected answers and were similar to the stakeholders focus groups: dependence on shared facilities and shared social/recreational spaces were the main factors leading to a sense of belonging. Shared transport/commuting patterns also played an important role in defining communities of interests as well as the feeling of living in a rural/residential/lifestyle area.

- Number of councillors

The average preferred number of councillors was 16.22 councillors. The minimum was 12 and the maximum was 24. The most common was 16. It should be noted that in these groups as well, some participants explained that the number of councillors is directly related to the number of community boards ie: if there are community boards offering an additional layer of representation to communities, more councillors may not be necessary. If there are fewer community boards or they cover a smaller area, more councillors is preferred to offer more representation.

- Ward structures and boundaries

The average preferred number of wards was 7 when people were asked to draw boundaries between the wards. The minimum was 1 (at large) and the maximum 15. The mode was 6.

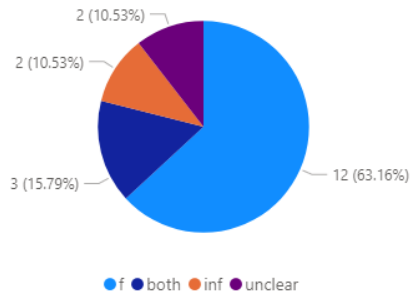
- Community boards and alternative local representation arrangements

Community boards remained popular representation arrangements in the community focus group sessions despite the absence of community board members.

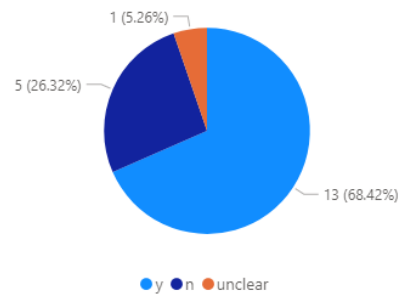
Participants preferred formal local representation arrangements such as community boards instead of informal arrangements such as community committees (63.16%). 68.42% of

participants also believed that community boards should cover the entire district and 52.94% believed that rural and urban areas should have different community boards.

Formal - Q4



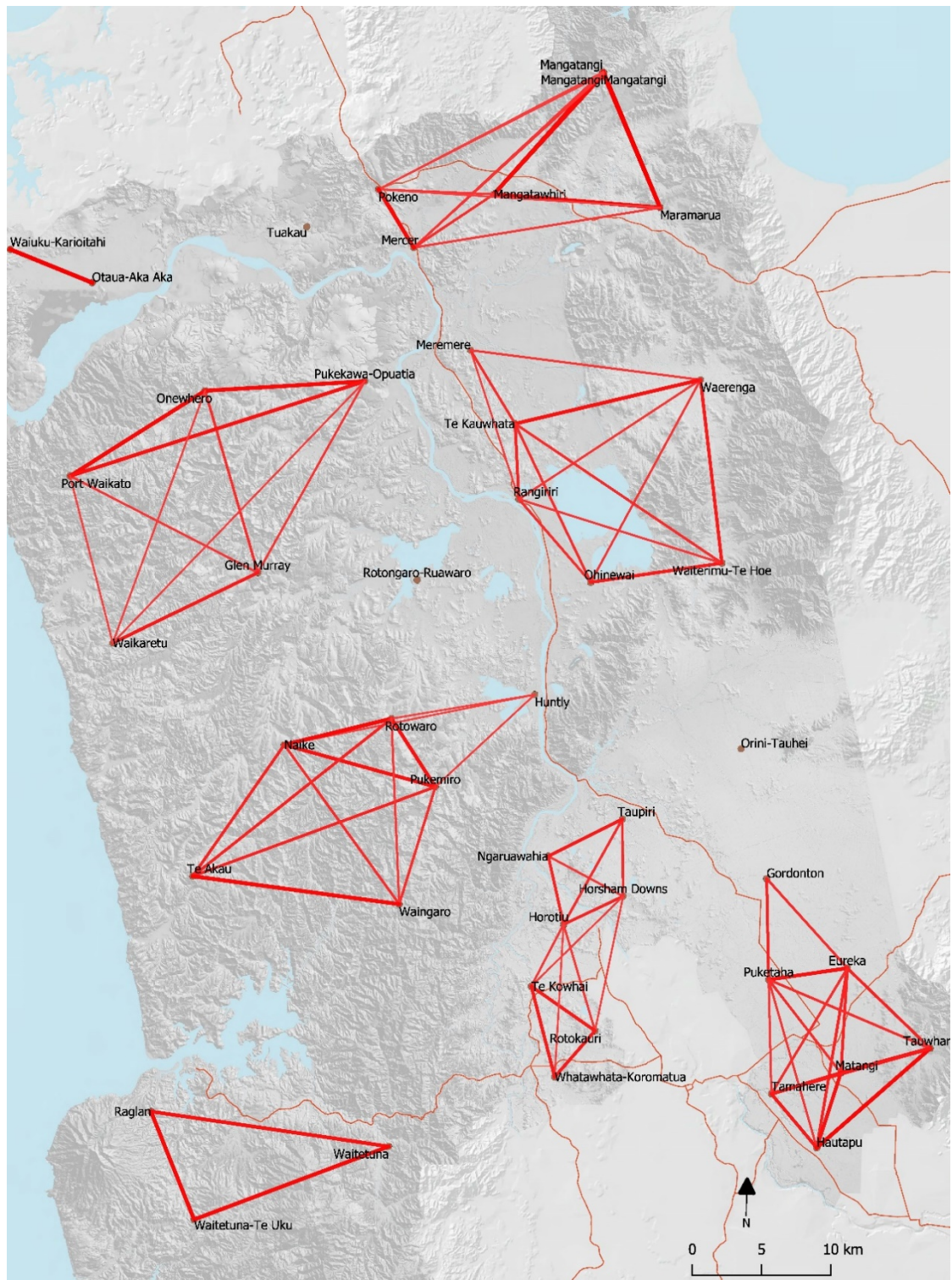
Whole Dist - Q5



- Further thoughts and observations
 - 1) When comparing the two different types of focus groups, no strong differences on the questions related to the number of wards, communities of interests, and local representation can be noticed. Noticeable differences on the question related to councillors, however, can be noticed with a tendency for community groups to desire more councillors (average 16.22; most common 16) than the stakeholders groups (average 14.06; most common 10).
 - 2) While the findings related to communities of interests did not produce any unexpected results, it should be noted that it was requested for the mapping activity to keep the notion of communities of interest in mind. The map analysis in the next section, therefore, offers further data on communities of interests.
 - 3) The selection method of participants ensured that representation was given to all areas of the district, providing an opportunity for balanced feedback.

6 Map boundaries

Focus group participants were asked to group localities together to form wards and had to keep the notion of community of interest in mind while doing so. The map below shows the stronger connections established by participants between localities (which was achieved through a software which counted how many times each localities were grouped together). The thickness of the line indicates the strength of the connection. Other maps illustrating weaker connections are available as attachments to this report.



As we can see, eight wards are formed by using these connections. The localities that are not linked to any wards are fluid and could be moved to any contiguous ward. The strength and weaknesses of connections should be used to move localities between wards (the weaker the connection, the more they can be moved legitimately) when trying to respect the +/-10% demographic rule.

7 Conclusion and recommendations

Important that the public feedback is considered as part of the Council's deliberations on an initial proposal. The Project Team's early engagement strategy successfully retrieved data from a broad set of residents regarding their views and preferences on the district's representation arrangements.

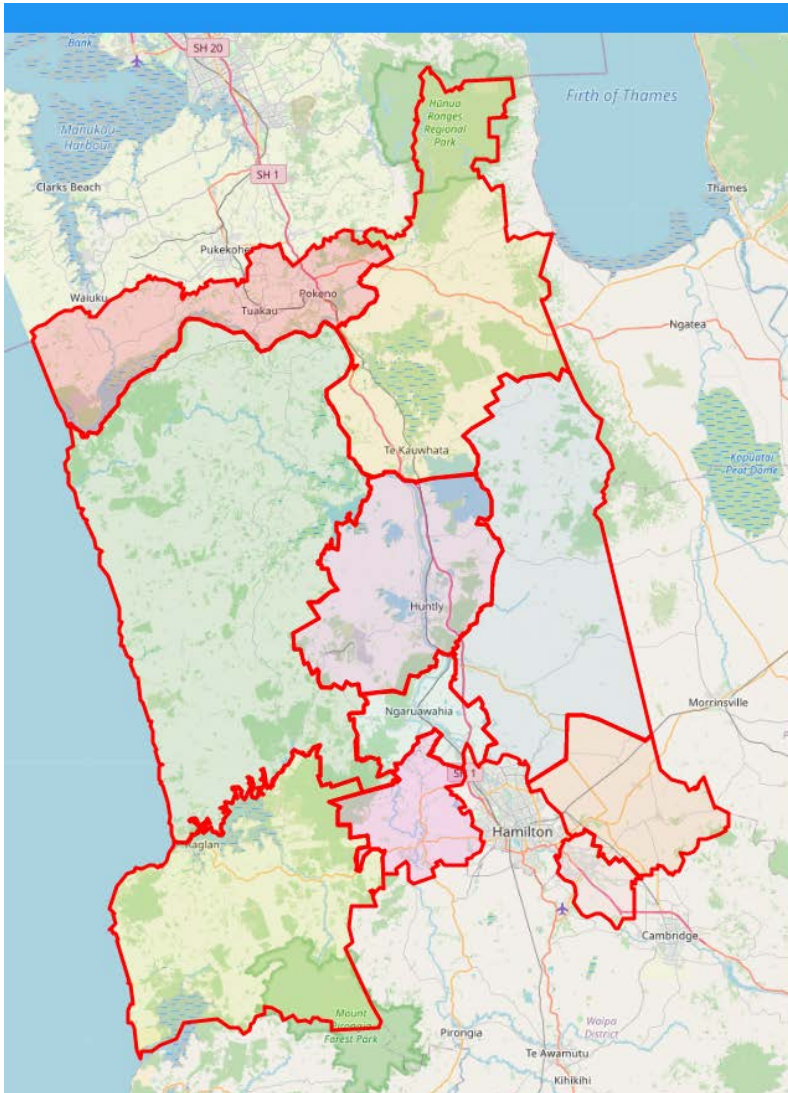
The process gave us the chance to meet many residents, provide objective information to them on representation review, and listen to, and capture, their thoughts and feedback. Overall, the approach to early engagement was effective and welcomed by participants. The Council can now take the information provided by the community during engagement and use it to inform their deliberations and eventually their initial proposal.

Through our early engagement strategy, we found out that there is a need for change and that the current representation arrangements need some amendments. Options include increasing the number of elected members and decreasing the number of wards .

Feedback supported community boards being the main form of local-level representation and the area they cover could be increased while some consideration could be given to the establishment of rural community boards.

The full data sets collected through the project team's early engagement strategy are available on request.

Option 1 - 10 Wards



Model Summary

Model: jj 2018 wards 11 CRs - as is no changes

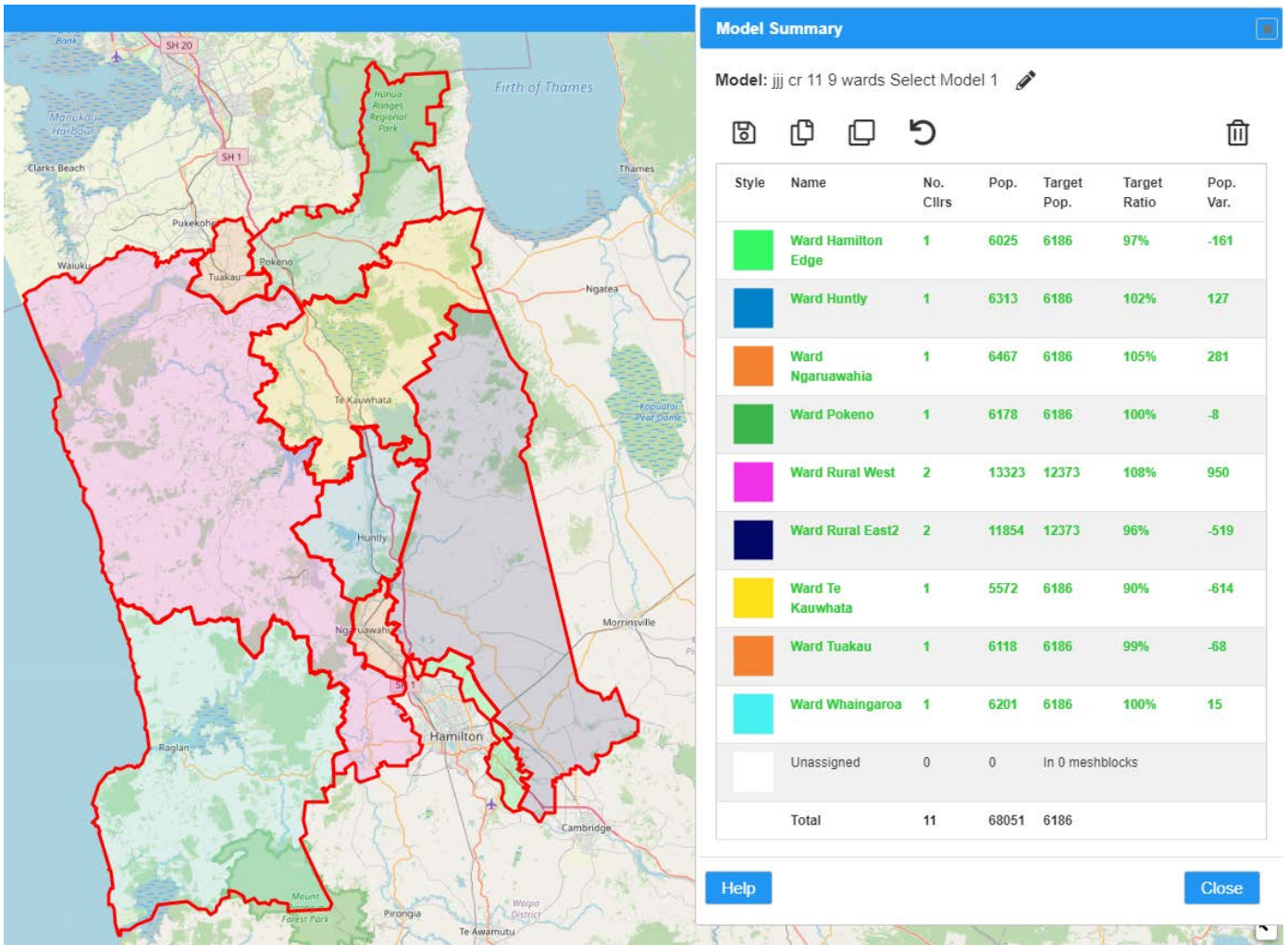
📄
📄
📄
↺
🗑️

Style	Name	No. Cllrs	Pop.	Target Pop.	Target Ratio	Pop. Var.
🔴	Awaroa ki Tuakau	1	14162	6794	208%	7368
🟠	Eureka	1	5506	6794	81%	-1288
🟡	Hukanui-Waerenga	1	5271	6794	78%	-1523
🟢	Huntly	1	7153	6794	105%	359
🟣	Newcastle	1	5854	6794	86%	-940
🟤	Ngaruawahia	1	7555	6794	111%	761
🟥	Onewhero-Te Akau	1	4830	6794	71%	-1964
🟦	Raglan	1	5577	6794	82%	-1217
🟧	Tamahere	1	6360	6794	94%	-434
🟨	Whangamarino	1	5672	6794	83%	-1122
	Unassigned	0	111	In 4 meshblocks		
	Total	10	67940	6794		

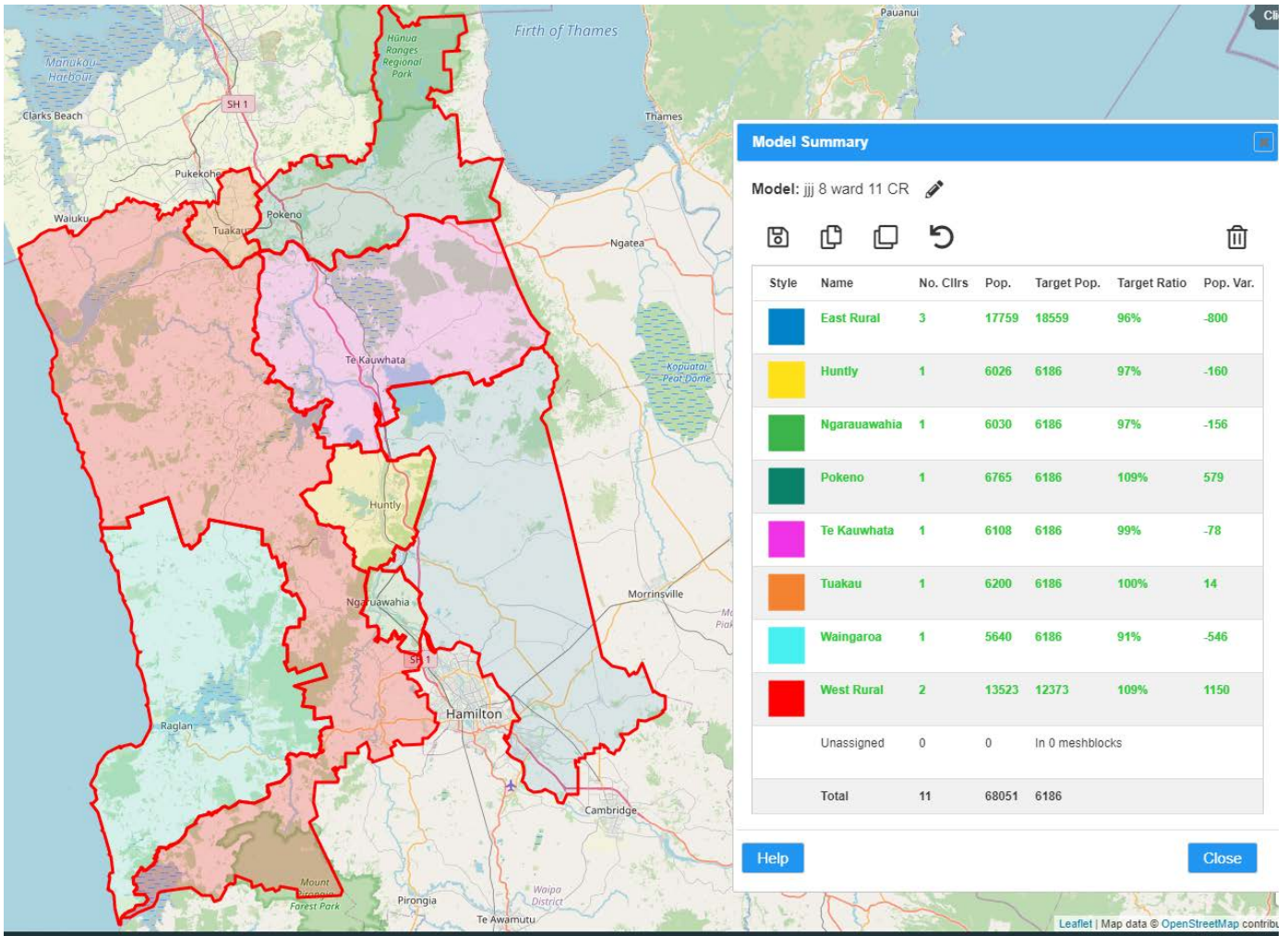
Help

Close

Option 2 - 9 Wards

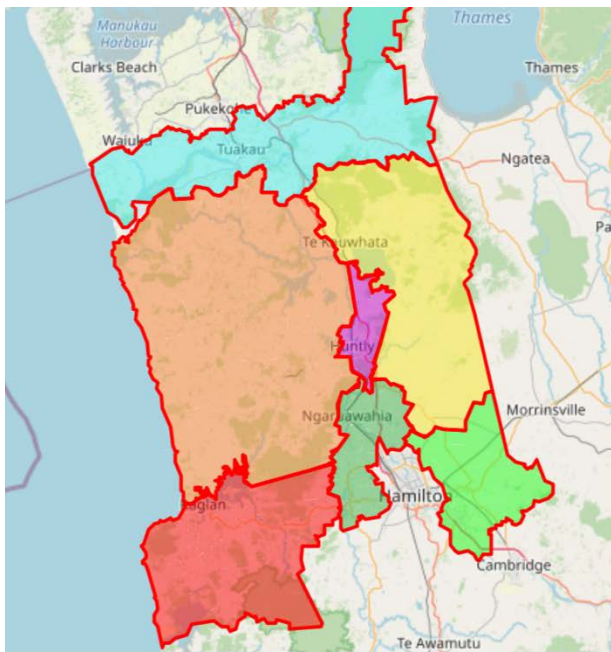


Option 3 - 8 Wards



Option 4 - 7 Wards (2 Options provided in A & B below – resulting in the development of C)

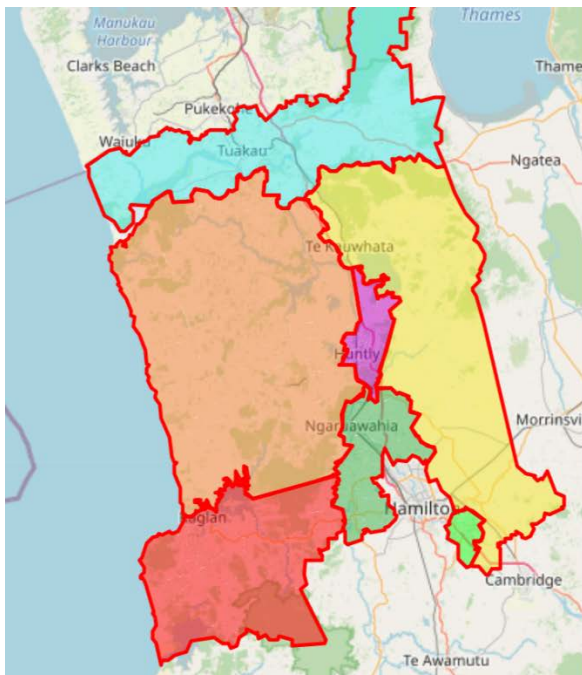
OPTION A



Model: general ward focus groups

Style	Name	No. Cllrs	Pop.	Target Pop.	Target Ratio	Pop. Var
	east	1	6356	6152	103%	204
	Huntly	1	6001	6152	98%	-151
	Ngaruawahia	2	12803	12304	104%	499
	north	3	17620	18456	95%	-836
	raglan	1	6156	6152	100%	4
	tamahere	2	12636	12304	103%	332
	west	1	6099	6152	99%	-53
	Unassigned	0	380	In 11 meshblocks		
Total		11	67671	6152		

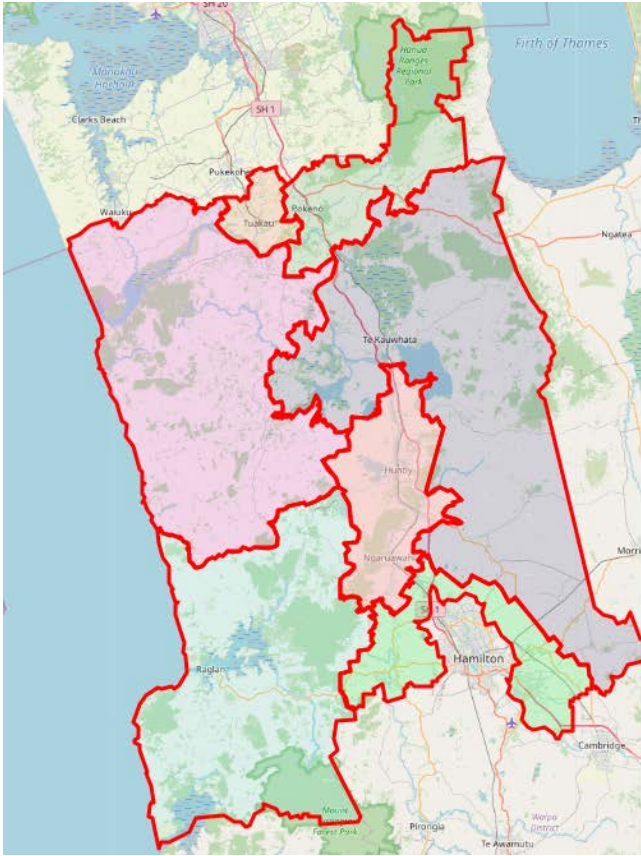
OPTION B



Model: general ward focus groups 2

Style	Name	No. Cllrs	Pop.	Target Pop.	Target Ratio	Pop. Var.
	east	2	12938	12304	105%	634
	Huntly	1	6001	6152	98%	-151
	Ngaruawahia	2	13007	12304	106%	703
	north	3	17620	18456	95%	-836
	raglan	1	6156	6152	100%	4
	tamahere	1	5850	6152	95%	-302
	west	1	6099	6152	99%	-53
	Unassigned	0	380	In 11 meshblocks		
Total		11	67671	6152		

MAP C (PROPOSED OPTION)











Model: jjjj Dodo model - Rag southernmost 







Style	Name	No. Cllrs	Pop.	Target Pop.	Target Ratio	Pop. Var.
	Hukanui-Waerenga	2	12150	12373	98%	-223
	Kirikiroa	3	16925	18559	91%	-1634
	Pokeno Hunua	1	6402	6186	103%	216
	Port Waikato	1	6761	6186	109%	575
	Tuakau	1	6303	6186	102%	117
	Waikato River Towns	2	12868	12373	104%	495
	Whaingaroa	1	6642	6186	107%	456
	Unassigned	0	0	In 0 meshblocks		
Total		11	68051	6186		

Help

Close

Option 5 - 5 Wards

